



JEWELLERY AND GEM APPRAISER

Independent Jewellery Appraisals

Jewelz2008 Ltd
218 The Strand
Whakatane.
Ph 07 3078156

Date : 19 May 2009
Appraisal No. 10353/55
Page : 3 of 3

PURPOSE OF VALUATION : *INSURANCE*

ITEM : Opal Matrix and Diamond Ring.

STYLE :

An 18ct yellow gold shank has ends to 3.7mm tall including Box settings to 3.7mm wide that join an oval hand made bezel.. this measures 16.4mm long and 7.4mm to 5.5mm wide and 3.7mm to 4.7mm tall including a rub over top.

The shank has a flat profile and measures 2.2mm to 3.3mm wide with a reverse taper and 2.7mm to 1.2mm thick.

CONTENT :

Set is an oval opal matrix slab and four diamonds.

The opal matrix measures approx. 15.7mmX6.9mm to a rounded point. The diamonds have been graded while mounted as Color H/I and Clarity VS.

The inner diamonds are baguette and each weighs approx. 0.07ct and each outer Princess cut diamond weighs approximately 0.03ct.

COMMENTS :

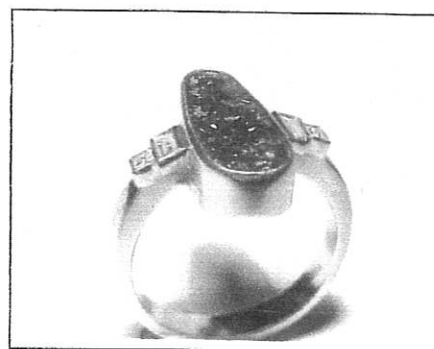
Cast and hand made components, the ring is well finished and in a good condition and weighs 5.8grms.

The diamond weight has been estimated using a Leveridge gauge
An Indemnity or a cash pay-out of the resale value may differ.
U.S. Exchange Rate : 0.57.

This allows to replace with a similar new item from a Retail Jewelry Store.

Estimated Replacement Value :

Three Thousand Four Hundred Dollars.....\$3400



Appraisal prepared by : _____

Sandra Jones
Gemmologist FGAA, FGA
Registered JVS Appraiser

JVS
Jewellery Valuers Society
of New Zealand Inc.