

Diamond & Gem Jewellery Valuations Ltd.

528

- M.J.V.S Valuer
- F.G.A.A Gemmologist
Diamond Grader
F.G.A Gemmologist
- DipDT Diploma diamond
Technology

P/F: 03 5449293

M: 021-0625417

E: rocsnz@gmail.com

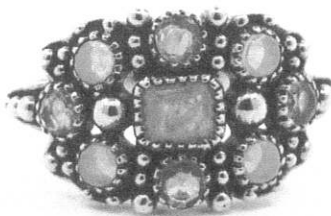
238a Queen Street, RICHMOND

NELSON, NEW ZEALAND

www.rocs.co.nz

Name:

Prepared for:



Purpose of:

Insurance replacement only

Item:

9ct cast one piece emerald and Opal set ring

Description

9ct yellow gold stamped 375 semi round profile band tapered 2.06x1.45-1.25mm with bead of gold on shoulder leading up to a multi gem set top that is 11.15x16.83mm set with 5 emeralds and four opal is multi bead settings with gold balls spread around

Stones:

Emeralds

Cut: Round and Square emerald cut

Opals

Round cabochon cut

Approximate dimensions as listed below, all grades list are assessed in settings unless stated otherwise.

Emeralds

3.90x3.15mm, 4@2.50mm

Opals

4@2.32mm

Colour:

Emeralds—mid to light green with yellow hues

Opals - White base full play of colour

Clarity:

Emeralds—semi opaque

Opals - opaque

Condition:

Fair

Notes:

Prepared by Brett Grimwood

F.G.A.A(3956), F.G.A.A.(812227) Gemmologist, Diamond Grader(3956)

DipDT Diamond Technologist (559),

Registered M.J.V.S valuer.

Thursday, 21 July 2022

Reference:

Replacement retail: \$1,995.00

Retail pricing based on factors of the day including precious metal prices, USD to NZD exchange rates, and an average retail margin.

These factors change over time and it is recommended you have your jewellery re-valued every two years to allow for these changes.

Total weight:	3.06Grams	Gem Carat weight:		Diamond carat weight:	na	Exchange rate:	\$00.62-1.00NZD
Platinum:	\$856.00USD Ounce	Gold:	\$1696.50USD Ounce	Palladium:	\$1784.00USD Ounce	Silver:	\$18.66USD Ounce

Diamond grading scale

Colour

D—E—F—G—H—I—J—K—L—M—N—O

Clarity scale

FL-IF-VVS1-VVS2-VS1-VS2-SI1-SI2-I1-I2

Disclaimer: The item(s) described above have been examined and the figures expressed are of my opinion. All stones have been assessed in the settings, the colours, sizes and grades are estimated within the limitations of the settings, these grades may vary if the stone is examined out of the setting with the owners permission and at their expense. The values here are expressed in New Zealand dollars and include G.S.T of 15%. Whilst all care is taken in the preparation of this valuation no liability is taken other than those of omission. This valuation is not intended for resale and is for the expressed purpose of replacement and insurance cover only.

Gold and platinum prices taken from international gold and bullion dealers kitco. F.G.A.A—Fellow Gemmological Association of Australia, F.G.A.—Fellow Gemmological Association of Great Britain
DipDT Diploma in Diamond Technology, M.J.V.S—Member Jewellery Valuers Society of New Zealand