

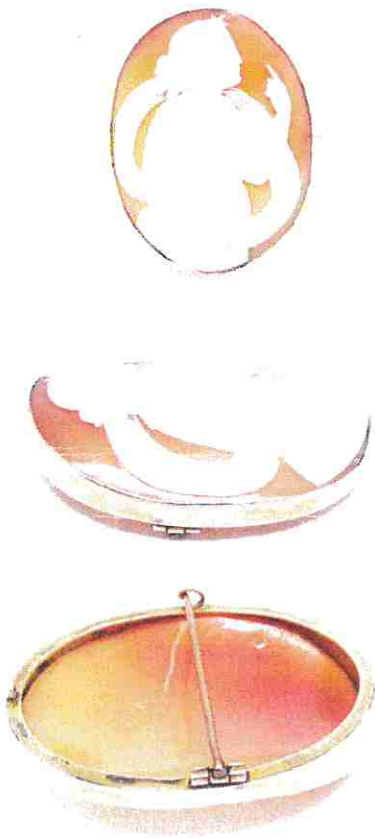
# Diamond & Gem Jewellery Valuations Ltd.

133

- M.J.V.S Valuer
- F.G.A.A Gemmologist  
Diamond Grader  
DipDT Diploma diamond  
technology

P/F: 03 5449293  
M: 021-0625417  
E: dgjvltld@clear.net.nz  
238a Queen Street, RICHMOND  
NELSON, NEW ZEALAND

Name: Prepared for: Opulence on Stafford  
Stafford Street  
Timaru



**Purpose of:** Insurance replacement only

**Item:** Cameo brooch

**Description** 9ct yellow gold stamped 9ct, oval brooch 57.88x41.73mm rub setting that follows the natural contour of the shell, on reverse side is a hinged brooch pin with C hook closure

**Stones:** Cameo  
shoulders

**Cuts:** Cameo depicting bust of lady with ribbons draped over

*Approximate dimensions as listed below, all grades list are assessed in settings unless stated otherwise.*

51.45x41.46mm

**Colour:** Orange - flesh coloured backing with off white bust

**Clarity:** Semi opaque

**Condition:** Fair

**Notes:**

**Replacement retail: \$2,700.00**

Retail pricing based on factors of the day including precious metal prices, USD to NZD exchange rates, and an average retail margin. These factors change over time and it is recommended you have your jewellery re-valued every two years to allow for these changes.

Prepared by Brett Grimwood  
F.G.A.A.(3956), F.G.A.A.(812227) Gemmologist, Diamond Grader(3956)  
DipDT Diamond Technologist (559),  
Registered M.J.V.S valuer.

Thursday, 24 March 2016

Reference: Opulance

<b>Total weight:</b>	16.68grams	<b>Total gem carat weight:</b>	na	<b>Total diamond carats weight:</b>	na	<b>Exchange rate:</b>	\$0.66=\$1.00NZD
<b>Platinum:</b>	\$941.00USD Ounce	<b>Gold:</b>	\$1231.15 USD Ounce	<b>Palladium:</b>	\$501.00USD Ounce	<b>Silver:</b>	\$15.37USD Ounce

Colour

D—E—F—G—H—I—J—K—L—M—N—O

**Diamond grading scale**

Clarity scale

FL-IF-VVS1-VVS2-VS1-VS2-SI1-SI2-I1-I2

**Disclaimer:** The item(s) described above have been examined and the figures expressed are of my opinion. All stones have been assessed in the settings, the colours, sizes and grades are estimated within the limitations of the settings, these grades may vary if the stone is examined out of the setting with the owner's permission and at their expense. The values here are expressed in New Zealand dollars and include G.S.T of 15%. Whilst all care is taken in the preparation of this valuation no liability is taken other than those of omission. This valuation is not intended for resale and is for the expressed purpose of replacement and insurance cover only.  
Gold and platinum prices taken from international gold and bullion dealers kitco. F.G.A.A.—Fellow Gemmological Association of Australia,  
M.J.V.S.—Member Jewellery Valuers Society of New Zealand