

New Zealand Jewellery Valuations Ltd

550

Incorporating Cynthia Cahill Jewellery Valuations



Appraisal #JT 006414272009



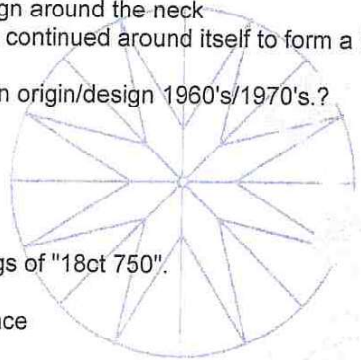
STORE: Onehunga Jewellers Ltd
Basis of Value for this Item: RV New

Purpose of Appraisal: **Estimated Replacement Value**
Function of Appraisal: **Insurance**

One stamped 18ct yellow gold Lady's hand assembled Gold Curved Bar Link Necklace. Condition is very good.

- Length: 50.0 cm (extended)
- Width: 21.5 cm (overall width of two links)
- Links: 2.1 mm wide x 1.9mm thick curved bars that are linked (with small gold disc buttons) and articulating forming a scallop design around the neck
- Clasp: One wire is continued around itself to form a hook that links a larger gold disc button

Possibly Scandanavian origin/design 1960's/1970's.?



Identified with markings of "18ct 750".

Total Weight of Necklace

Total Estimated Replacement Value

\$ 9500.00

Comments

Please see over page for Limiting Conditions in regards to this valuation. Economic Factors as follows: GST=15% US\$/oz Gold 1219, Platinum 1301, Palladium 780, Silver 17.66, NZ\$1= US\$0.78.NZ\$1=AU\$0.89.

Date: September 29, 2014



 Jill Towers, FGA, DGA, BSc
 Gemmologist/Jewellery Valuer.