

Dennis Blacklaws Ltd

LOWER HUTT: 10 Laings Road, Lower Hutt, 5010, New Zealand
Phone & Fax (04) 566-3668

Email: dennis.blacklaws@gemlink.co.nz Website : www.gemlink.co.nz

Resident Appraiser/Valuer: Dennis D. Blacklaws

Gems & Jewellery Specialist - Appraiser/Valuer - Graduate Gemologist



Appraisal prepared for :
Address

AppraisalPlus DBL06001

Ref No: 22078DB/LH24973

© Copyright 2021 All rights reserved
Dennis Blacklaws Ltd

Date: 21 September, 2021

ARTICLE

1. (Original), Cast/Fabricated, Hand-Crafted, - (single) Coronet, with (single) species: Diamond object: (faceted) variety: Colourless synthesis: (Natural - Earth mined) treatment: (Non-enhanced) origin: Un-Known and contemporary/modernist style (Solitaire) design Ring.

Ring Metal composition analysed as 18ct Yellow gold and White gold alloy, with stamped with 750 style hall/mark.

Ring presented with Yellow gold, with, plain, half (1/2) round (section), to "reverse" and "Taper" shape, and "Seamless" 2.42mm ← x 3.17mm → x 1.30-3.49mm † dimension and 'polish-finish' style shank.

Ring presented with Yellow gold, flow-on to cut-out, plain and 'curve' to "Rounded" shape, 'solid' and "Buttress" style "shoulder" setting, placed and applied to either side.

Ring presented with Rhodium-Plated on top of White gold, and Elevated, with (1) and (single) and separate Diamond, with (4) claw and (4) pillar and flush and inset, and 7.82mmØ x 7.93mmØ x 7.04mm † dimension with cut-out and pierced, and "in-situ" and "Taper" with 'Round' pattern, and 'single' separate "Venus" design, Tension inset, type "Coronet" and central style "Assembly" mount setting.

Ring presented with "Assembly" setting applied and placed to and across top of Rhodium-Plated on top of Yellow gold cut-out and pierced, "in-situ" and 'circular' shaped, 3.65mmØ x 3.65mmØ x 0.63mm † dimension and 'base' type "collet" setting inset between shank ends.

Centre Diamond, (MRSBC) modern, and (Round) shaped "Brilliant" cut;

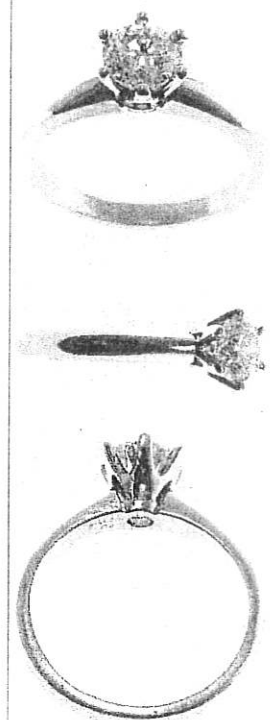
1 x est 6.16-6.15mmØ x 4.06mm †

Est by Formula (1 x est 1.004ct) (I or Higher) (I₁)

N.B. The presented Diamond has by application and "in-situ" and applied type examination and analysis using "Ultra-Spectrum Optical Filtering" (USOF) and/or "The Diamond Trading Co" V2.03 Diamond-Sure™ and/or "SmartPro™" screening "instruments" to separate Cultured-LGD Laboratory-Grown Diamond of (HPHT) High-Pressure High Temperature and/or (CVD) Chemical Vapour Deposition Cultured (LGD) (Laboratory-Grown) and/or (treated) Diamonds - also known as (Created/Man-Made) from "Natural-Untreated" - "Earth-Mined" Diamond has indicated a Pass/Positive result for a "Natural-Untreated" - "Earth-Mined" Diamond.

This Laboratory has applied various "in-situ" type "method/s" to "identify" the type and/or origin of the submitted Diamond/s and may include the use of some (if not all) of the following; Microscopy "examination", including analysis with cross-Nicol polarized Filters (Polariscope) (CPF) and/or the Gemtrix PL Inspector and/or the use of "SSEF classic illuminator" and/or (Neodymium) rare-earth Magnetism and/or GL Gem Spectrometer. For the purposes of this Appraisal this Diamond has been appraised/valued as (Natural - Earth Mined).

COPY



ITEM 1. CONTINUED .../

CONTINUED ...//

3/4



EDINBURGH ASSAY OFFICE

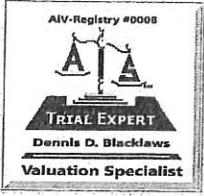


GIA
GEMOLOGICAL
INSTITUTE OF
AMERICA



Dennis D. Blacklaws

This Appraisal has been prepared in conformity with accepted professional ethics of Appraisers International Society™ (USA) & The Jewellery Appraisers Society of N.Z. Inc.



Dennis Blacklaws Ltd

LOWER HUTT: 10 Laings Road, Lower Hutt, 5010, New Zealand
Phone & Fax (04) 566-3668

Email: dennis.blacklaws@gemlink.co.nz Website : www.gemlink.co.nz

Resident Appraiser/Valuer: Dennis D. Blacklaws

Gems & Jewellery Specialist - Appraiser/Valuer - Graduate Gemologist



Appraisal prepared for

Address



AppraisalPlus DBL06001

Ref No: 22078DB/LH24973

© Copyright 2021 All rights reserved
Dennis Blacklaws Ltd

Date: 21 September, 2021

ARTICLE

ITEM 1. CONTINUED .../

Central Diamond, (MRSBC) modern, and (Round) shaped "Brilliant" cut; CONTINUED/

**N.B. (Natural) Diamond graded (*in-situ*) in mount. Diamond Est Total (Est 1.004ct).
Diamond diameter and depth dimension measurements estimated due to mount.
Diamonds colour graded under an (ultraviolet-free) colour/grading environment.
Diamonds body colour Masked due to mount.
(MSRBC) Diamond of G.I.A. Medium cut/grade.
Diamond NEEDS to be removed from mounts for more accurate
Weight, Colour and Clarity grading and to identify if Clarity enhanced.**

COPY

Diamonds presenting inert (*Nil*) **Fluorescent**
and colour **reaction** to L.w.U.v. radiation.

Ring Total Weight (4.60grams) with Total Metal Weight (4.40grams).
Ring presenting near as 'New' and Safe condition and general overall surface wear.
Finger size (O) centre. Photographs (X2/1.).

R.M.V.N. \$11,400.00

L.M.V. \$11,280.00



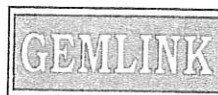
Appraisal No 24973 Economic Factors for item(s) 1 - 1

Total Value R.M.V.N. N.Z. \$11,400.00

L.M.V. N.Z. \$11,280.00

N.Z. ELEVEN THOUSAND FOUR HUNDRED DOLLARS ONLY.

N.B. Exchange Rate U.S. \$...0.6918 Gold per oz U.S. \$...1765 Platinum per oz U.S. \$915



[Signature]
Dennis D. Blacklaws

This Appraisal has been prepared in conformity with accepted professional ethics of Appraisers' International Society™ (USA) & The Jewellery Appraisers Society of N.Z. Inc