

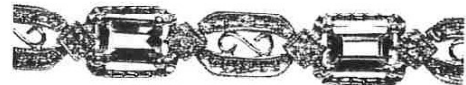
714



INDEPENDENT JEWELLERY VALUATIONS

GEMMOLOGIST - APPRAISER - EMAIL IJVNZMAIL@GMAIL.COM - PHONE 09 630 5731 021 280 1223

1 April, 2022



Agent - To Whom It May Concern
Client -

VALUATION FOR NEW RETAIL REPLACEMENT - BC.SG3995-1

1 x 10ct Blue topaz and diamond bracelet

- METAL - 10ct, stamped: 10K AU
- MANUFACTURE - Cast assembled, rhodium plated
- SETTINGS - White gold rectangular 4 claw settings with outer frame, alternating with articulated diamond-shaped bead set sections and oval filigree sections
- CLASP - White gold hidden box and tongue, with fold-over safety catch
- BLUE TOPAZ - 9x approx. 6.0x0x 4.00mm rectangular step cut est = 4.50 ct
- GRADE - Light intense blue, eye clean, grade 5/10
- DIAMONDS - 36x approx. 1.0mm single cut, commercial quality est = 0.20 ct
- LENGTH - 19.0cm
- WEIGHT - 12.93 grams
- CONDITION - Excellent

NB: Stones assessed in settings, sizes and grades are approximate

REPLACEMENT VALUE \$3,900.00

Economic Factors - NZD\$ = USD\$.68 Gold = USD\$1990.00 Plat.= USD\$1082.00

SCOTT CRAIG FGAA GANZ GEMMOLOGIST - APPRAISER

In my opinion the figures represent the value of the item for the purpose stated. I assume no responsibility for any action that may be taken on the basis of the appraisal- values can vary due to the subjective nature of some jewellery articles, differing retail margins and exchange rates. All amounts are in NZ dollars including GST. Diamonds are assumed to be natural unless stated and may require advanced testing to confirm if they are natural or synthetic. GIA grading is used for diamonds, Gemworld/Gemguide grading is used for coloured stones. Components are in sound wearable condition unless stated. Only non-destructive tests are used- unstamped metals may require further assay testing to confirm the exact composition. **Appraisals are not valid for reselling purposes**