

CUSTOMER:

ADDRESS:

DATE: 09 August 2011

Agent: Jewellery Valuation Centre, Mahara Place, Waikanae

RETAIL NEW REPLACEMENT

1 x PAIR OF RUBY STUD EARRINGS

Fabricated in 9ct Yellow Gold.

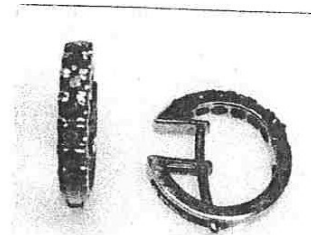
¾ hoops.

Dimensions: 15.00mm diameter x 2.70mm width.

Hinged halfway with an ear wire soldered to the centre top.
Each earring presents 6 x 2.10mm round rubies claw set. Of good commercial grade.

Total weight: 3.60 grams.

Presented in as new condition.



NEW REPLACEMENT \$ 950.00

1 x STERLING SILVER SNAP BANGLE

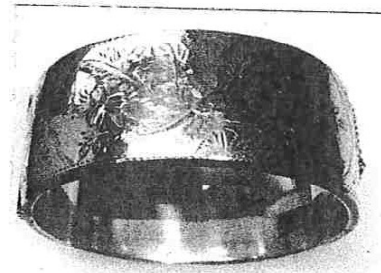
English made.

25.00mm wide. Slightly rounded profile. Hollow. Wax filled.
Hinged with a push in style box clasp.

The bracelet is overlaid with 9ct gold flowers and a swallow on the top half.

Total weight: 70.00 grams.

Presented in excellent condition.



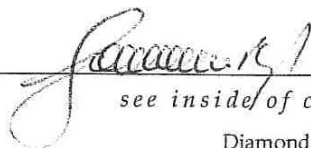
NEW REPLACEMENT \$ 595.00

(see attached photograph)

JVC 745138-11

\$US-0 \$NZ 0.8512 Gold \$US 1857.00 Platinum \$US 2069.00 Palladium \$US926.53 Silver \$US45.14

Signed:



see inside of cover for conditions relating to this valuation

Diamond Grading Scales in descending order of quality/value:

Make: Ideal - Excellent - Very Good - Good - Medium - Fair - Poor

Colour: D - E - F - G - H - I - J - K - L - M - N - O ... Z

Clarity: IF - VVS1 - VVS2 - VS1 - VS2 - SI1 - SI2 - I1 - I2 - I3