



The Jewellery Valuer
Empowered gems and jewellery appraisers

REF 0573, effective date 14/06/22
 © copyright, SJ Crout 2020, all rights reserved, see customer agreement page three.

Wellington Agent
 Jubilee Jewellers. 23 Waring-Taylor St. Wellington Central
 (04) 471 2961
 jubileejewellersnz@gmail.com

Net weight = 1.62 grams
 Ring size = L

"Specific use valuation and appraisal report"

Jewellery appraisal and valuation service requested for the use of obtaining insurance on the item presented by
Not valid for resale or other uses as these may have different value opinions, see customer agreement on page three.

The Item, appraisal report

One all yellow gold ring that has not been stamped. However readily apparent identification indicates the metal to be 18carat gold. This ring is a narrow band of princess cuts held with delicate shared claws. The overall height is 2.00 mm and the width is 2.60 mm. This ring has been handcrafted using a variety of techniques, which include the lost wax casting process with traditional hand setting and finishing.

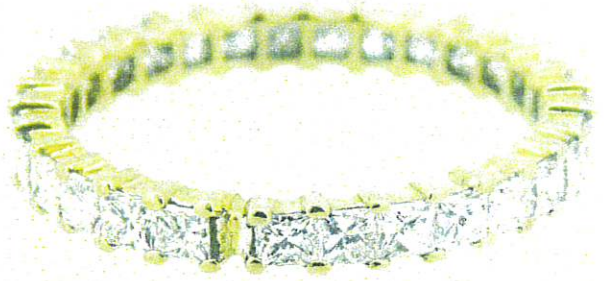
Condition, appraisal report see notes page 4. Claws show up to 5% wear, Sides show up to 5% wear, Band shows up to 5% wear.

This item was most likely made circa 2010. It has been well cared for and shows light overall wear. Major stones have been checked and found to be tight and secure in the settings at the time of inspection.

Gemmological appraisal report (with estimated characteristics)

Small diamonds

There are 28 small diamonds each is princess cut. Each measures 1.90 mm in width, the colour and clarity grades are H/VVS and the total weight is estimated at 1.33 cts.



21336

VALUATION REPORT (market explanation) with additional comments on page four.

This item has been most likely imported into New Zealand the exact item is not available, however comparable items are available through most New Zealand traditional retail jewellery stores. It has been valued in this market for market value new.

Market value (new) sometimes called "replacement value" for a comparable item = **\$4,500.00**

In this case there is some light wear plus the band is out of round and therefore an adjustment has been made to allow for this and to represent the market value of the item, in its current condition.

Market value (in its current condition) sometimes called "indemnity value", present day value or fair value = **\$3,100.00**

Should you require a new and single item to be made as close as possible to the original using modern day techniques then please use the cost estimate value. As this represents the most likely cost to buy from a retail manufacturing jeweller as a single bespoke piece. Note this value has been arrived at using the cost approach.

"Cost estimate value" \$5,700.00

Signed S J Crout

See pages 2-4 for further details / definitions of values / signed customer agreement and scope of work. This valuation and appraisal should be read in its entirety. See page 2 for further details
 Accredited gems and Jewellery Valuer and Appraiser AiSCV™ AVS-GJV™ (AiV-Reg #0007).
 Charter senior member of JAANZ (Jewellery Appraisers Association of New Zealand)
 Member of The Jewellers and Watchmakers Society of NZ (See notes on attached pages for more details.)
 Fellow member of Gemmological Association (Gem-A), FGA, GIA Diamonds graduate, Dg.
 Member of Goldsmiths Guild. Trade certified manufacturing jeweller, Master Goldsmith.