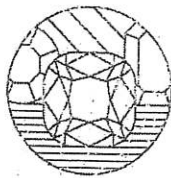


708

NICHOLAS TSALIS  
Gemmologist & Jewellery Valuer  
FGA, GAA Diamond Grading  
Member of the JVSNZ



GRAHAM OLIVER  
Gemmologist & Jewellery Valuer  
FGA, GIA Diamond Grading  
Member of the JVSNZ

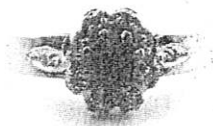
# WELLINGTON JEWELLERY VALUATIONS

DATE COMPLETED  
MAY 17, 2023

APPRAISAL NUMBER  
6320-111897-1

DOCUMENT FUNCTION  
RETAIL VALUATION

CUSTOMER ADDRESS  
WELLINGTON, NEW ZEALAND



## A SAPPHIRE & DIAMOND CLUSTER RING

Cast and hand finished in 18 carat yellow and white gold, tested using XRF metal analysis  
Stamped: 18ct

The ring features an oval cut blue sapphire in an elevated central eight claw white gold setting and eight claw set surrounding single cut diamonds in a yellow gold pierced basket back cluster setting. The setting is joined to a yellow gold tapered flat band with grain set diamond set leaf pattern shoulders. The band measures 3.92-2.74mm in width, 0.99mm in thickness and the setting measures 8.90 x 8.30 x 5.95mm.

Finger size: O. Item weight: 4.28 grams.

Presented in very good condition showing minimal signs of wear.

One (1) natural, oval-shaped, brilliant cut, medium to dark, strong blue sapphire

|                  |                                     |
|------------------|-------------------------------------|
| Species          | Natural Corundum                    |
| Variety          | Natural Sapphire                    |
| Measurements     | 4.40mm x 4.00mm x ~2.40mm in depth. |
| Estimated Weight | 0.35 ct.                            |
| Clarity          | Slightly Included                   |
| Cut              | Good                                |

Ten (10) single cut natural diamonds

|                        |   |
|------------------------|---|
| Measurements           | 1.10mm - 1.30mm in diameter x ~0.73mm in depth. |
| Weight Range           | 0.006 ct. - 0.010 ct.                           |
| Estimated Total Weight | 0.100 ct.                                       |
| Comments               | Diamonds are of commercial grade.               |

### METAL PRICES

- Gold: NZD \$3,171.44/toz.
- Silver: NZD \$38.02/toz.
- Platinum: NZD \$1,713.79/toz.
- Palladium: NZD \$2,380.27/toz.
- USD \$1.00 => NZD \$1.60

**NZD \$4,100.00**

*Nicholas Tsalis*

Estimated Retail Value  
\*Value includes sales tax(es).

Nicholas Tsalis, FGA, GAA Diamond Cert, MJVSNZ  
Gemmologist & Jewellery Valuer

