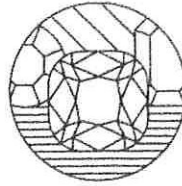


404

NICHOLAS TSALIS  
Gemmologist & Jewellery Valuer  
FGA, GAA Diamond Grading  
Member of the JVSNZ



GRAHAM OLIVER  
Gemmologist & Jewellery Valuer  
FGA, GIA Diamond Grading  
Member of the JVSNZ

# WELLINGTON

## JEWELLERY VALUATIONS

DATE COMPLETED  
MARCH 5, 2024

APPRAISAL NUMBER  
6326-114708-1

DOCUMENT FUNCTION  
INSURANCE APPRAISAL



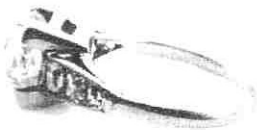
PREPARED FOR:

CUSTOMER ADDRESS:

### AN ESTATE SOLITAIRE DIAMOND RING

Hand assembled in platinum, tested using XRF metal analysis  
Hallmarks: None  
Circa: 1910-1920's

The ring is set with a cushion-shaped old mine cut natural diamond, set in an opened back four claw corner setting with double bezel base and under-rail support. The setting is joined to a tapered band with a rounded profile and raised epaulette-shaped shoulders with three graduated mille grain set old mine cut diamonds each side.

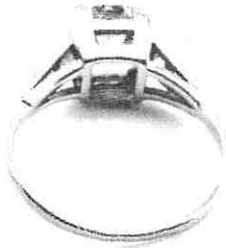


Finger size: J1/2. Item weight: 3.33 grams.

Presented in moderate to good condition showing noticeable signs of wear. The base of the band is thin and requires rebuilding.

One (1) old mine cut natural diamond

Measurements 7.70mm - 7.89mm in diameter x 5.46mm in depth.  
Estimated Weight 2.26 ct.  
Colour G - H  
Clarity VS1 (Very Slightly Included 1)



Two (2) old mine cut natural diamonds

Measurements 2.50mm - 2.90mm in diameter x 2.10mm in depth.  
Weight Range 0.087 ct. - 0.117 ct.  
Estimated Total Weight 0.100 ct.  
Colour I - K  
Clarity VS2 (Very Slightly Included 2)

#### METAL PRICES

- Gold: NZD \$3,292.50/toz.
- Silver: NZD \$37.49/toz.
- Platinum: NZD \$1,474.57/toz.
- Palladium: NZD \$1,600.53/toz.
- USD \$1.00 => NZD \$1.63