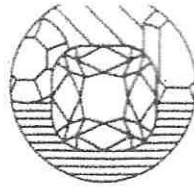


418

NICHOLAS TSALIS
Gemmologist & Jewellery Valuer
FGA, GAA Diamond Grading
Member of the JVSNZ



GRAHAM OLIVER
Gemmologist & Jewellery Valuer
FGA, GIA Diamond Grading
Member of the JVSNZ

W E L L I N G T O N
J E W E L L E R Y V A L U A T I O N S

DATE OF APPRAISAL: OCTOBER 2, 2023
APPRAISAL NO: 6326-113391-1
TYPE OF APPRAISAL: INSURANCE APPRAISAL



A DIAMOND SET BANGLE

Cast assembled in 18 carat white gold, tested using XRF metal analysis
Hallmarks: 750

An oval hinged frame featuring 243 pave set round brilliant cut diamonds across nine rows on a high dome profile, hinged to one side, fitted with a concealed push-in tongue clasp and a pierced heart lattice back plate frame. The bangle measures 8.88-16.03mm in width and 3.81-5.09mm in thickness.

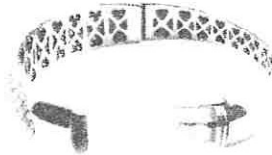
Item weight: 54.40 grams.

Presented in good condition showing slight signs of wear.

Comments: There is no equivalent item available in the NZ market, so the replacement costs are calculated for a comparable quality jeweller to recreate their own version of this item in NZ.

Two hundred forty-three (243) round brilliant cut natural diamonds

Measurements	1.95mm - 2.00mm in diameter x ~1.20mm in depth.
Weight Range	0.028 ct. - 0.030 ct.
Estimated Total Weight	7.290 ct.
Colour	G - H
Clarity	SI1 (Slightly Included 1) - SI2 (Slightly Included 2)
Cut	Good



METAL PRICES

- Gold: NZD \$3,078.95/toz.
- Silver: NZD \$35.45/toz.
- Platinum: NZD \$1,475.26/toz.
- Palladium: NZD \$2,035.22/toz.
- USD \$1.00 => NZD \$1.68

NZD \$33,500.00

Estimated Retail Replacement Value
*Sales taxes are included.

Nicholas Tsalis

Nicholas Tsalis, FGA, GAA Diamond Cert, MJVSNZ
Gemmologist & Jewellery Valuer

WELLINGTON JEWELLERY VALUATIONS | LEVEL 2, 111 CUSTOMHOUSE QUAY, WELLINGTON, 6011 | (+64) 44 9957 56 | NICHOLAS@WJV.CO.NZ | WWW.WJV.CO.NZ

LEGAL DISCLAIMER: This document is intended for insurance purposes only, being an estimate of the cost to replace the article(s) at full retail prices in effect at this date. The information recorded on this appraisal represents our interpretation of results obtained from gemmological instruments and grading techniques designed for this purpose. Any modifications applied to the original piece including but not limited to metal structure and composition alteration, diamond and gemstone (shape, cut, color, clarity, size, hue, saturation, etc.) replacement or alteration will void this appraisal. Jewellery polishing and sizing will not affect the status of this appraisal. Due to the subjective nature of gemmological appraisals, results may vary considerably between appraisers. We have made this evaluation to the best of our knowledge and ability but can assume no liability for same, not attributable to gross negligence, fraud or willful misconduct. This document was generated using the Instappraisal appraisal platform.

