

February 12, 2018

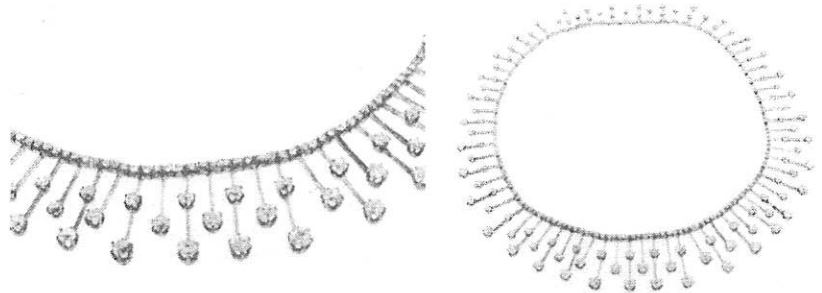
GemLab Jewellery Valuers  
42 Constellation Drive  
Mairangi Bay

## DOCUMENTATION FOR INSURANCE

To be read in conjunction with the cover page

Prepared for

Ref: GL18A624 1/1



### **NECKLACE... Estate diamond collar in velvet box.**

Total Weight = 44.62 grams.

MOUNT... is hand assembled in approx 12-14ct yellow gold and silver, as tested by XRF metal analysis (test #7711-7713).

Graduated fringe style on 43cm long gold foxtail chain, 1.3mm wide. Fully threaded with individual links consisting of gold tubes with 2 and 3 silver claw settings applied on top, and yellow gold knife edge wire drops, alternating short wires with single silver claw settings and longer wires with two claw settings, the wires graduate from the centre (27mm) to the ends (11.4mm). The back half of the necklace has silver spacers between links. Clasp is a disguised push in tongue into three links design with tube.

In good condition for its age.

DIAMONDS... 52 are six claw set, a mix of old Single, old English square and old European cut, approx 2.3-2.7 mm, estimated to total 3.00 carats, with quality assessed in the setting as Good to Fair old make, H-J colour, SI-I1 clarity. At least two are chipped.

DIAMONDS... 56 are six claw set, old European cut, one approx 4.6 x 4.3mm, 7 approx 4.0-4.4mm, and 48 approx 2.8-3.5mm, estimated to total 9.3 carats, with quality assessed in the setting as Good to Fair old make, H-K colour, VS-I1 clarity.

\* At least four diamonds have small chips.

DIAMONDS... 184 are set, old Rose cut, approx 1.3-1.5 mm, estimated to total 1.80 carats, of good old quality.

#### Diamond Grading Scales in descending order of quality/value

Make : Excellent - Very Good ----Good ----- Fair ----- Poor  
Colour : D--E--F -- G -- H -- I -- J --- K ---- L ---- M ---- N ---- O .. Z  
Clarity : IF - VVS1 - VVS2 - VS1 - VS2 -- SI1 -- SI2 - SI2/I1 - I1 -- I2 - I3

**\$52000.00** Recommended Replacement Cover

**\$35000.00** Recommended Indemnity Cover

Note: This report has been prepared for the named client for the sole purpose of obtaining insurance cover.

It is not transferrable to another person or entity and it's use as a sales aid is prohibited.

**RRC** : Is based on current normal asking prices in the most common end user market for new items of equivalent kind, quality & provenance.

**RIC** : Is based on our opinion of the price this item would retail for, taking into account its age, style, and condition, in the market it would most likely be found.

The recommended cover figures may be higher than current prices to ensure you are fully covered.

Metals in \$US/oz : Gold = 1360, Plat = 1020 ; Economics : \$NZ1 = \$US0.71 & \$AUS0.92, GST = 15 %

**Jennifer Harris** FGA, DGA, MemberJVSNZ

42 Constellation Drive, Mairangi Bay 0632

PO Box 305299, Triton Plaza, Auckland 0757, New Zealand

Phone: +64 9 48 999 19 • Fax: +64 9 48 999 24 • info@gemlab.co.nz • www.gemlab.co.nz