

# Diamond & Gem Jewellery Valuations Ltd.

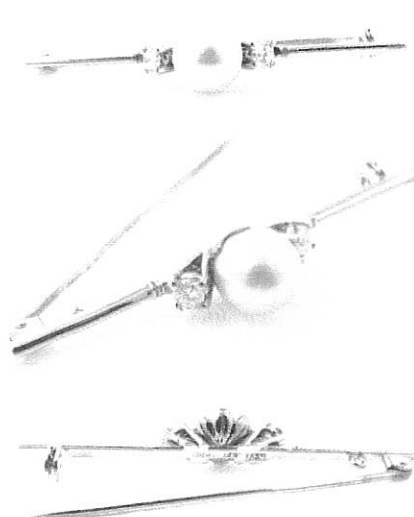
158

- M.J.V.S Valuer
- F.G.A.A Gemmologist  
Diamond Grader  
F.G.A Gemmologist
- DipDT Diploma diamond Technology

P/F: 03 5449293  
M: 021-0625417  
E: rocsnz@gmail.com  
238a Queen Street, RICHMOND  
NELSON, NEW ZEALAND  
www.rocs.co.nz

Name:

Prepared for:



**Purpose of:**

Insurance replacement only

**Item:**

Diamond and Pearl set brooch

**Description**

18ct white gold and platinum stamped 18ct PLAT PLD 53.16mm total with platinum upswept shoulders set between four claw curved settings at the middle point, center of brooch is set with a pearl in a cupped scalloped setting, on reverse side is aligned brooch pin with trigger clasp

**Stones:**

**Diamonds** **Cut: Round Brilliant cut**  
**Cultured pearl** **near round**

*Approximate dimensions as listed below. all grades list are assessed in settings unless stated otherwise.*

**Diamonds**

2@3.40mm(0.15)estimated combined carat weight=

0.15carats

**Cultured pearl**

9.17-9.18mm

**Colour.**

**Diamonds** - H1

**Cultured pearl**- Creamy with bluish tones

**Clarity.**

**Diamonds** - SI2

**Cultured pearl** -Lightly blemished surface

**Condition:**

Good

**Notes:**

Prepared by Brett Grimwood

F.G.A.A(3956), F.G.A.(812227) Gemmologist, Diamond Grader(3956)  
DipDT Diamond Technologist (559),  
Registered M.J.V.S valuer.

**Replacement retail: \$3,995.00**

Retail pricing based on factors of the day including precious metal prices, USD to NZD exchange rates, and an average retail margin .  
These factors change over time and it is recommended you have you jewellery re-valued every two years to allow for these changes.

Monday, 15 June 2020

<b>Total weight:</b>	5.25Grams	<b>Gem Carat weight:</b>	na	<b>Diamond carat weight:</b>	0.30carats	<b>Exchange rate:</b>	\$00.64-1.00NZD
<b>Platinum:</b>	\$830.00USD Ounce	<b>Gold:</b>	\$1726.40 USD Ounce	<b>Palladium:</b>	\$2013.00USD Ounce	<b>Silver:</b>	\$18.10USD Ounce

**Diamond grading scale**

Colour  
**D—E—F—G—H—I—J—K—L—M—N—O**

Clarity scale  
**FL-IF-VVS1-VVS2-VS1-VS2-SI1-SI2-I1-I2**

**Disclaimer:** The item(s) described above have been examined and the figures expressed are of my opinion. All stones have been assessed in the settings, the colours, sizes and grades are estimated within the limitations of the settings, these grades may vary if the stone is examined out of the setting with the owners permission and at their expense. The values here are expressed in New Zealand dollars and include G.S.T of 15%. Whilst all care is taken in the preparation of this valuation no liability is taken other than those of emission. This valuation is not intended for resale and is for the expressed purpose of replacement and insurance cover only.

Gold and platinum prices taken from international gold and bullion dealers kitco. F.G.A.A—Fellow Gemmological Association of Australia, F.G.A—Fellow Gemmological Association of Great Britain  
DipDT Diploma in Diamond Technology, M.J.V.S—Member Jewellery Valuers Society of New Zealand