

# Diamond & Gem Jewellery Valuations Ltd.

467

- M.J.V.S Valuer
- F.G.A.A Gemmologist  
Diamond Grader  
F.G.A Gemmologist
- DipDT Diploma diamond Technology

P/F: 03 5449293  
M: 021-0625417  
E: rocsnz@gmail.com  
238a Queen Street, RICHMOND  
NELSON, NEW ZEALAND  
www.rocs.co.nz

Name:

Prepared for:



**Purpose of:** Insurance replacement only

**Item:** Diamond, Sapphire and Emerald set ring

**Description** 9ct gold stamped RoCS 375, made from old gold flat profile band tapered 10.5-10.8mm with a raise wire wave across the top, set off set an below each wire are 3 bead set stones, Sapphire, Emerald and diamond with a raised rub setting 4.98mm

**Stones:** **Diamonds** **Cut:** Round brilliant cut  
**Sapphire, Emeralds** **Round mixed cut**

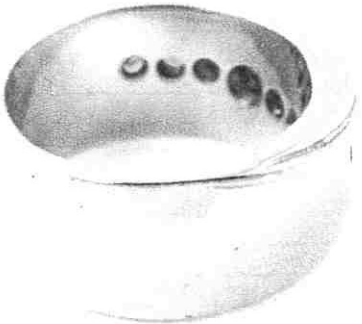
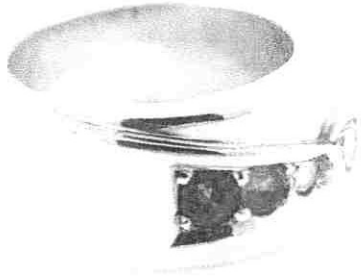
*Approximate dimensions as listed below. all grades list are assessed in settings unless stated otherwise.*

**Diamonds**  
4.00mm(0.25)2@2.95mm(0.10)Estimated combined diamond carat weight= 0.45carats  
**Sapphire,**  
2@3.9mm(0.35), Estimated combined diamond carat weight= 0.60carats  
**Emeralds-**  
2@3.48mm(0.15) Estimated combined diamond carat weight= 0.30carats

**Colour.**  
**Diamonds** -GH  
**Sapphire-** Teal blue  
**Emeralds-** Vivid green

**Clarity.**  
**Diamonds** -Mid SI  
**Sapphire, -** Moderately included  
**Emeralds-** Moderately included

**Condition:** New



**Notes:**

Prepared by Brett Grimwood  
F.G.A.A(3956), F.G.A.(812227) Gemmologist, Diamond Grader(3956)  
DipDT Diamond Technologist (559),  
Registered M.J.V.S valuer.

**Replacement retail: \$5,769.00**

Retail pricing based on factors of the day including precious metal prices, USD to NZD exchange rates, and an average retail margin .  
These factors change over time and it is recommended you have you jewellery re-valued every two years to allow for these changes.

Thursday, 17 October 2019  
Reference: Columbus

<b>Total weight:</b>	18.00Grams	<b>Gem Carat weight=</b>	0.90carats	<b>Diamond carat weight=</b>	0.45carats	<b>Exchange rate:</b>	\$00.62-1.00NZD
<b>Platinum:</b>	\$876.00USD Ounce	<b>Gold:</b>	\$1480.00 USD Ounce	<b>Palladium:</b>	\$1642.00USD Ounce	<b>Silver:</b>	\$17.24USD Ounce

### Diamond grading scale

Colour  
D—E—F—G—H—I—J—K—L—M—N—O

Clarity scale  
FL-IF-VVS1-VVS2-VS1-VS2-SI1-SI2-I1-I2

**Disclaimer:** The item(s) described above have been examined and the figures expressed are of my opinion. All stones have been assessed in the settings, the colours, sizes and grades are estimated within the limitations of the settings, these grades may vary if the stone is examined out of the setting with the owners permission and at their expense. The values here are expressed in New Zealand dollars and include G.S.T of 15%. Whilst all care is taken in the preparation of this valuation no liability is taken other than those of emission. This valuation is not intended for resale and is for the expressed purpose of replacement and insurance cover only.

Gold and platinum prices taken from international gold and bullion dealers kitco. F.G.A.A—Fellow Gemmological Association of Australia, F.G.A.—Fellow Gemmological Association of Great Britain  
DipDT Diploma in Diamond Technology, M.J.V.S— Member Jewellery Valuers Society of New Zealand