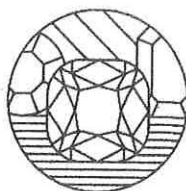


NICHOLAS TSALIS
 Gemmologist & Jewellery Valuer
 FGA, GAA Diamond Grading
 Member of the JVSNZ



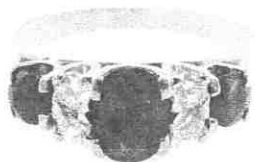
GRAHAM OLIVER
 Gemmologist & Jewellery Valuer
 FGA, GIA Diamond Grading
 Member of the JVSNZ

W E L L I N G T O N
 J E W E L L E R Y V A L U A T I O N S

DATE COMPLETED
MARCH 6, 2022

APPRAISAL NUMBER
6326-107123-1

DOCUMENT FUNCTION
RETAIL VALUATION

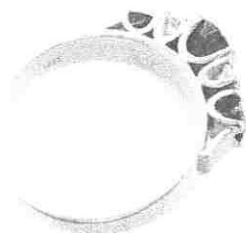


PREPARED FOR:

CUSTOMER ADDRESS
WELLINGTON, NEW ZEALAND

A BLUE SAPPHIRE AND DIAMOND DRESS RING

Cast and hand assembled in 18 carat yellow and white gold
 Stamped: 18ct



The ring consists of one oval cut blue sapphire, two round cut blue sapphires and four paired round brilliant cut diamonds, in alternating sequence across white gold four claw settings with U shaped bases and open sides. The settings are joined to a yellow gold tapered flat band and white gold bar shaped shoulders. The band measures 1.98-4.70mm in width, 0.83mm in thickness.

Finger size: P. Item weight: 4.68 grams.

Presented in good condition showing slight signs of wear.

METAL PRICES

- Gold: NZD \$2,871.90/toz.
- Silver: NZD \$37.47/toz.
- Platinum: NZD \$1,634.98/toz.
- Palladium: NZD \$4,269.60/toz.
- USD \$1.00 => NZD \$1.46

One (1) natural, oval-shaped, brilliant cut, medium-dark, slightly greenish blue sapphire

Species	Natural Corundum
Variety	Natural Sapphire
Measurements	6.98mm x 5.07mm x 3.20mm in depth.
Estimated Weight	1.00 ct.
Clarity	Slightly Included (Type II)
Cut	Good

Two (2) natural, round-shaped, brilliant cut, dark, very slightly greenish blue sapphires

Species	Natural Corundum
Variety	Natural Sapphire
Measurements	3.80mm in diameter x ~2.32mm in depth.
Weight Range	0.281 ct. - 0.281 ct.
Estimated Total Weight	0.56 ct.
Clarity	Eye Clean - Slightly Included (Type II)
Cut	Good