

GEMOLOGIST & JEWELLERY APPRAISER

14 FANNIN STREET, BAY VIEW, NAPIER 4104 NEW ZEALAND
PH:06 8366436

Diamond Heart Pendant & Neckchain.

The Pendant:

A tapered upper bale has 10 graduated diamonds pave set centre front within slightly raised borders to a fixed bale in the centre heart pendant. A line of applied raised letters of **MAGGIE** are diamond encrusted pave set above the puffed convex heart front with a flat verso surface all high polish finished.

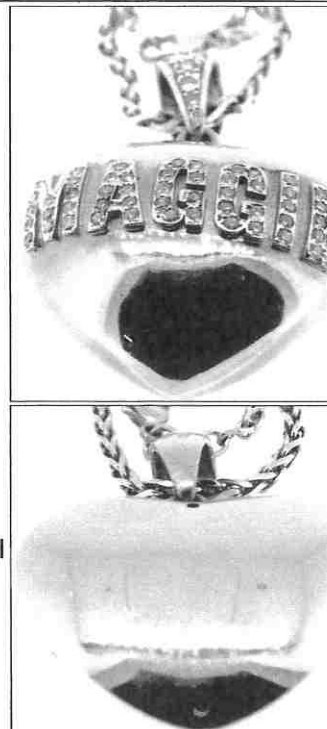
Details of Gemstones:

Diamonds:63: Round Modern Brilliant Cut
53@ 1.10mm diameter = 0.006 carat approx each
2 @ 1.55mm diameter = 0.015 carat approx each
8 @ 1.65mm diameter = 0.017 carat approx each
Clarity: I.F.-VVS1.
Color: F-G
Make: Very good cut class

Total Diamond Weight: 0.484 carat approx

Details of Mounting:

Manufacture: Hand crafted 'le cire perdu', Lost Wax method, accompanied with original presentation red gold trimmed box. Stated by the owner to have been a gift from the **Royal Bolkiah Family of Brunei**.
Metal: Stamped 750, ie 18kt yellow gold, rhodium diamond setting finish
Condition: Negligible wear.
Pendant Measures: 35mm total length x 23mm W x 10.6mm D approx
Total Weight of Pendant: 10.70 grams approx



Not actual s

The Neckchain:

A fancy stylized foxtail style link neckchain has a small lobster clasp to secure, hand assembled Stamped **THL star motif, 13 V1**, Italian made in very good condition measuring 1.80mm width x 597mm length and weighs 15.545 grams approx

NEW REPLACEMENT VALUE: \$12,530.00

INDEMNITY MARKET VALUE: \$7,000.00

Please Note: For high end specific style items such as these, an Indemnity Market Retail price may vary according to variant market conditions.

Note: NRV allows to replace with a similar new article of similar quality from the most common NZ retail market. IMV: See below. Actual weights and grades may differ from the estimates above. Greater accuracy would require analysis of gemstones out of the mount.

I have examined the articles listed and in my opinion the figures given represent the value of such articles for the purpose stated.

Values are expressed in NZ dollars, inclusive of GST.

All claws and settings have been inspected and are considered satisfactory unless otherwise stated.

All precious stones have been assessed in their settings; sizes and weights are based on their physical dimensions. The apparent grading of diamonds may be influenced by the colour and style of the settings.

This appraisal has been prepared to the best of my knowledge and expertise, should any aspect cause concern please contact me.

NOTE: - Insurance Appraisals are not valid for reselling purposes.

Date 9 April 2021

Signature

Exchange Rates:
US\$0.68 = NZ\$1.00
AUS\$0.90 = NZ\$1.00
US\$1,751.00 = 1 Troy oz
Fine Gold
(Includes 15% GST)



Jewellery Valuers So
of New Zealand I

- The description of all articles is as specific as possible with regard to physical components. ' Precious metals and gem stones are positively identified and described.
- * All gemstones have their quantity, size and/or weight specified. ' The description includes reference to the condition and/or age of the article ' Faulty or worn components are described as such. ' Indemnity Market Value means: - To restore the claimant to the same position that held before the loss, i.e. the quality secondhand current retail price in New Zealand at the time of appraisal less any wear and tear and