

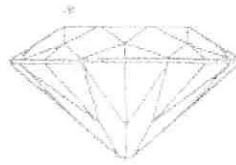
AN INDEPENDENT JEWELLERY APPRAISAL

Nicholas Tsalis

Gemmologist & Jewellery Appraiser

FGA - Fellow of Gemmological Association of Great Britain

GAA (Dia Cert) Gemmological Association of Australia

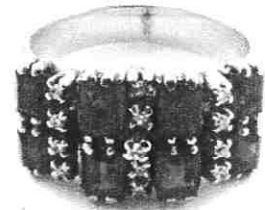


Graham Oliver

Gemmologist & Jewellery Appraiser

FGA - Fellow of Gemmological Association of Great Britain

GIA (Dia Cert) Gemmological Institute of America



METAL PRICES

- Gold: NZD \$2,351.43/toz.
- Silver: NZD \$28.13/toz.
- Platinum: NZD \$1,469.13/toz.
- Palladium: NZD \$2,795.49/toz.
- USD \$1.0000 => NZD \$1.5618

DATE COMPLETED
NOVEMBER 4, 2019

APPRAISAL NUMBER

DOCUMENT FUNCTION
INSURANCE APPRAISAL

PREPARED FOR

ADDRESS

A BLUE SAPPHIRE AND DIAMOND DRESS RING

Cast component and hand assembled in 18 carat yellow and white gold
Stamped: 18ct

The ring features eight rectangular step cut natural blue Sapphires grouped in two rows of four, claw set in white gold, inter-spaced by 13 claw set and grouped single cut diamonds, all on wire back support and joined to a tapered yellow gold flat band. The band measures 4.02-5.56mm in width and 1.40mm in thickness.

Finger size: M. Total weight: 8.10 grams. Presented in very good condition.

Eight (8) natural, rectangular-shaped, step cut, medium-dark, strong, blue sapphires

Species: Natural Corundum
Variety: Natural Sapphire
Measurements: 3.85mm x 2.90mm x ~1.80mm in depth.
Weight Range: 0.177 ct. - 0.244 ct.
Estimated Total Weight: 1.40 ct.
Clarity: Slightly Included (Type II)
Cut: Medium - Good

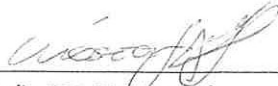
Thirteen (13) single cut natural diamonds

Measurements: 1.30mm - 1.30mm in diameter x ~0.79mm in depth.
Weight Range: 0.010 ct. - 0.010 ct.
Estimated Total Weight: 0.13 ct.
Color: H - J
Clarity: SI1 - SI2

NZD \$4,500.00

Estimated Retail Replacement Value

*Sales taxes are included.


Nicholas Tsalis, FGA, GAA Diamonds
Gemmologist & Registered Jewellery Valuer

LEGAL DISCLAIMER: This document is intended for insurance purposes only, being an estimate of the cost to replace the article(s) at full retail prices in effect at this date. The information recorded on this appraisal represents our interpretation of results obtained from gemmological instruments and grading techniques designed for this purpose. Any modifications applied to the original piece including but not limited to metal structure and composition alteration, diamond and gemstone (shape, cut, color, clarity, size, hue, saturation, etc.) replacement or alteration will void this appraisal. Jewellery polishing and sizing will not affect the status of this appraisal. Due to the subjective nature of gemmological appraisals, results may vary considerably between appraisers. We have made this evaluation to the best of our knowledge and ability, but can assume no liability for same, not attributable to gross negligence, fraud or willful misconduct. This document was generated using the Instappraise appraisal platform.