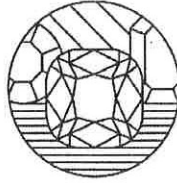


NICHOLAS TSALIS
 Gemmologist & Jewellery Valuer
 FGA, GAA Diamond Grading
 Member of the JVSNZ



GRAHAM OLIVER
 Gemmologist & Jewellery Valuer
 FGA, GIA Diamond Grading
 Member of the JVSNZ

W E L L I N G T O N
 J E W E L L E R Y V A L U A T I O N S

DATE COMPLETED
 NOVEMBER 12, 2023

ITEM NUMBER

DOCUMENT FUNCTION
 RETAIL VALUATION



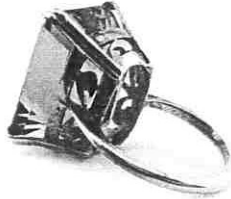
PREPARED FOR:

CUSTOMER ADDRESS:

ND

A SMOKY QUARTZ SET DRESS RING

Handmade in 9 carat rose gold, tested using XRF metal analysis
 Not stamped
 Circa Period: 1970's



The ring features an octagonal step cut Smoky Quartz in an open backed tapered four pillar corner setting with double side rail and pierced inserts supporting the setting, and joined to a reversed tapered band with up-swept knife edge shoulders. The band measures 2.03-1.73mm in width, 1.75mm in thickness and the setting measures 20.80 x 16.15 x 13.25mm.

Finger size: L1/2. Item weight: 9.55 grams.

Presented in good condition showing slight signs of wear.

One (1) natural, octagonal-shaped, step cut, medium, brown smoky quartz

METAL PRICES

- Gold: NZD \$3,287.82/toz.
- Silver: NZD \$37.80/toz.
- Platinum: NZD \$1,429.64/toz.
- Palladium: NZD \$1,638.23/toz.
- USD \$1.00 => NZD \$1.70

Species	Natural Quartz
Variety	Natural Smoky Quartz
Measurements	20.10mm x 15.63mm x 11.98mm in depth.
Estimated Weight	22.74 ct.
Clarity	Eye Clean
Cut	Good

NZD \$3,350.00

Estimated Retail Value
 *Sales taxes are included.

Nicholas Tsalis

Nicholas Tsalis, FGA, GAA Diamond Cert, MJVSNZ
 Gemmologist & Jewellery Valuer

WELLINGTON JEWELLERY VALUATIONS | LEVEL 2, 111 CUSTOMHOUSE QUAY, WELLINGTON, 6011 | (+64) 49 9575 6 | NICHOLAS@WJV.CO.NZ | WWW.WJV.CO.NZ

LEGAL DISCLAIMER: This document is intended for insurance purposes only, being an estimate of the cost to replace the article(s) at full retail prices in effect at this date. The information recorded on this appraisal represents our interpretation of results obtained from gemological instruments and grading techniques designed for this purpose. Any modifications applied to the original piece including but not limited to metal structure and composition alteration, diamond and gemstone (shape, cut, color, clarity, size, hue, saturation, etc.) replacement or alteration will void this appraisal. Jewellery polishing and sizing will not affect the status of this appraisal. Due to the subjective nature of gemological appraisals, results may vary considerably between appraisers. We have made this evaluation to the best of our knowledge and ability, but can assume no liability for same, not attributable to gross negligence, fraud or willful misconduct. This document was generated using the Instappraise appraisal platform

