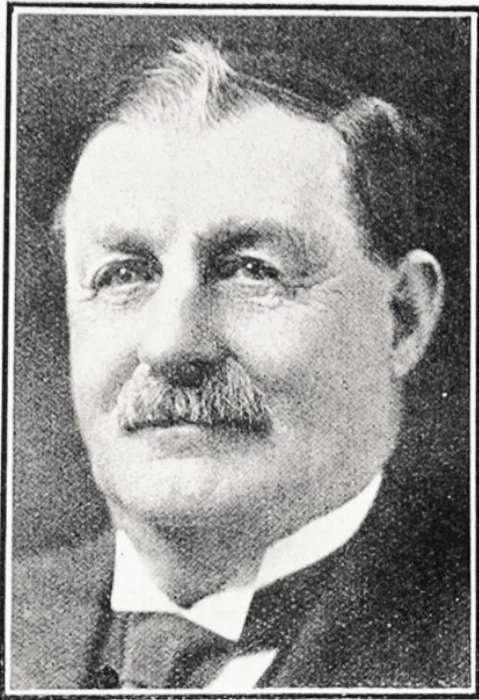


An uncommon 20th C gold railways free pass in the form of a classic hei tiki.

The pass, stamped 9ct and with the eyes filled with red wax, bears the monogram “**MLC**” with a gold jump ring to the top and the name **Hon. G. Witty**.

George Witty (1856-1941) was born in North Ferriby, Yorkshire and came to New Zealand in 1875, farming property at West Melton, Templeton and Avonhead. Having served on many public bodies, he entered Parliament for Riccarton in 1902, a seat he held until 1925 - the year in which he became a member of the Legislative Council.



HON. GEORGE WITTY,
M.L.C.

Source: Auckland Weekly News (1925)