

192

3

VALUATION FOR INSURANCE



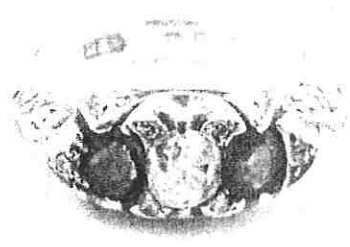
THE JEWELLERY VALUATION CENTRE

PREPARED FOR:
REPORT DATE: 23rd October 2019

REPORT NUMBER: 1910516/4

Item: AN ANTIQUE STYLED BLUE SAPPHIRE AND DIAMOND LONDON-BRIDGE RING

Design: The ring consists of a part grain and claw set Old Mine cut central diamond, a claw set natural blue Sapphire on either side of the diamond, four Old rose and single cut diamonds set in the central claws and an old single cut diamond set in half moon sections at each end of the setting top. The sides are pierced and carved out with a scroll motif, flow-on to the shoulder and tapering to the base of the band with a half round profile. The band measures 3.22-7.05mm in width, 1.60-4.72mm in thickness.



Manufacture: Handmade in 18 carat yellow gold

Stamps: B&S, 18, Birmingham assay

Finishing: Engraved: 19.3.90

Finger size: P

DIAMOND: 1, OLD MINE CUT

Total weight: 0.40ct estimated (4.70 x 4.60 x 3.24mm)

Colour grade: I-J

Clarity grade: VS1-VS2

GEM type: 2, NATURAL BLUE SAPPHIRES

Total weight: 0.80ct estimated (4.50 x 4.00 x 3.03mm)

Colour: Deep to moderate blue

Clarity: Slightly included

Cut: Oval mixed cut

Overall grade: Upper commercial grade

DIAMONDS: 4 SINGLE CUT, 2 OLD ROSE CUT

Total weight: 0.04ct estimated (1.00-1.20mm)

Averaged quality: Commercial grade

Handwritten notes:
Half mark ken
6/4 1893.



NEW RETAIL COMPARISON VALUE: \$6,950.00

NICHOLAS TSALIS, FGA, GAA Diamonds

Item notes:

Condition: Very good
Weight: 6.90 grams

The Jewellery Valuation Centre
Level 2, 111 Customhouse Quay, Wellington,
Ph: 04 499 5756
nicholas@jvcvaluers.co.nz
www.jvcvaluers.co.nz