

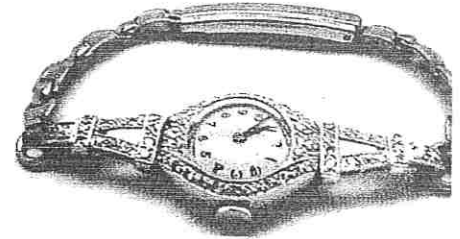


Ref No. AGL10643

Appraisal for Insurance Purposes Only

Agent **Onehunga Jewellers**
214 The Mall
Onehunga
Auckland
09 636 4760

Client:



(Photograph not to scale)

Date 7 October, 2005

Economic Factors NZD\$ = USD\$0.68 Gold = USD\$430.00 Platinum = USD\$900.00 GST Incl 12.5%

1 of 1

A lady's, 'vintage' - 'estate' wrist watch, dial named 'CYMA'.
Dress type, non water resistant, with a fitted 'barrel' shape, hinged and snap back.

Model

The dial has "Watersport" below the brand name. Movement # is 217163, case number 7556, is on the back near the hinge. The excellent dial condition, and the word 'Watersport', as it is a dress model, indicate the dial has been refurbished?.

Movement

Manually wound, Cyma 17 jewelled, calibre 384, non shock protected.

Glass

Plastic (acrylic) 'domed' type.

Dial

Round, 'off white, black Arabic numeral hour markers, outer ring of minute indicies, hands are black and narrow.

Case

'Barrel' shape - approx. 19.15mm long x 16.70mm wide and 5.25mm deep, not including the glass. The lugs add it is Platinum, as stamped inside, for the main part of the case, case back and the hinged 'lugs' as fittings for the 'non original', stainless steel metal bracelet, with a fold over expanding ratchet type clasp, by MONTAL - England. Platinum case stamped PLATINUM London Make, with a central mark as a big G with a small M at the top, through the G, and a P through the base of the G. The bezel surrounding the glass is grain set with 32 diamonds, mille' grain finished edge detail, the hinged lugs are also grain set with diamonds, 15 in each lug, also with mille' grain finished edge detail. Edge of case has a hand engraved finish, traditional style pattern.

Glass

Plastic (acrylic) 'domed' type.

Condition

Good. Appears to be running well, has not been opened as not our brief. Case showing only minor surface marks. The watch would, we feel, have originally had a 'cordette' type strap.

Diamonds

Setting restricts some measurements. No formal gem information supplied, ∴ approximates only.

Size
Grades

(62) Older Round Single cut. Approx. 1.30>1.55mm Ø. Calculated as very approx. 0.75carats total
Appear mounted as good average quality for smaller older cut gems.

Below is a representation of the G.I.A. Diamond grading scale, as used by this Laboratory, with modifications to the Cut/Make.
Re: Cut/Make - As the Diamond Industry is now re classifying the - 'Cut-Class' grade, we (AGL) now reflect an opinion on its 'appearance', based on Proportions and Symmetry. Starting at top grade at left in each range, and descending to the right. Further explanatory notes on the cover of this report. Smaller gems will often have Cut/Make, listed in simple terms, such as 'good, medium, fair' smaller gems.

****This scale only applies to Modern Brilliant cut gems, not Fancy Single or Old cut diamonds. Cut/make grade from 'Very Good - Fair', will then apply.**

Colour	>>>>>>>	D	E	F	G	H	I	J	K	L	M	N	O	P	Q	...	Z	>>>	Fancy colours
Clarity	>>>>>>>	F-IF			VVS1			VVS2			VS1	VS2	S11	S12	I1	I2	I3		
Cut/Make	>>>>>>>	Ideal		>>>>		Excellent		>>>>		Very good		>>>>		Good		>>>>		Medium >>>>>>> Fair / Promotional - Poor	

Total weight 14.9grams.

Replacement Value (range) **\$2,300.00 to \$2,500.00**
Indemnity Value **\$2,300.00 to \$2,500.00**

NB 'Replacement value' means our opinion of a likely price, (or in some instances, a range of prices), the piece would be sold for in a shop specializing in selling a similar 'Period/Estate' piece of the same age, style and condition (i.e. wear & tear). A similar item would not be available new. E & O E.
The 'Indemnity Value' is therefore the same as 'Replacement Value' and is also the items 'Estimated Market Value'
"Estate" items are those considered to be of materials, styles or contain older cut stones not generally available new in today's jewellery industry.

W. H. Palmer GIA Diamonds Graduate, CSMJAS
(Charter Senior Member JASNZ)
JASNZ Appraiser

NB: Appraisal should be complete with the attached cover note, as it has important information, as to conditions of use of the appraisal.
This appraisal expresses the opinion of a value, for the purpose stated only, as assessed by the appraiser/s who's signature/s appear/s on the document, at the date it was produced. It has been prepared, using non-destructive methods, and any acceptable information, if supplied, as guaranteed by the supplier, or the person/s who has/have requested the appraisal. It was prepared, using the stated, and/or tested, quality of metal, weights and grade range of gems that are set in it, only if supplied. If not supplied, they will represent our opinion and measured, while in the setting/s. The appraised value, does not imply any 'warranty, or a guarantee', from Advanced Gem Laboratory (AGL), that is the responsibility of the supplier or end reseller. Neither AGL, or its employees, are responsible for any omissions, errors or inaccuracies which might become apparent within this appraisal. These may be from later examination, or certification loose, on any presently set gems, or any other reasons not noted at this time.