



# Dennis Blacklaws Ltd

LOWER HUTT:

10 Laings Road, Lower Hutt, 5010, New Zealand  
Phone & Fax (04) 556-3668

Email: dennis.blacklaws@gemlink.co.nz Website: www.gemlink.co.nz

Resident Appraiser/Valuer: Dennis D. Blacklaws

Gems & Jewellery Specialist - Appraiser/Valuer - Graduate Gemologist



Appraisal prepared for

Address

AppraisalPlus DBL06001

Ref No: 17004JL/PT25283

© Copyright 2021 All rights reserved  
Dennis Blacklaws Ltd

Date: 20 November, 2023

## ARTICLE

3. Imported, - (Reproduction), Branded, - Fabricated precision-machine/milled, Hand-Crafted, - and classical/traditional - vintage with (solid) style (Link) design Bracelet with Cast/Fabricated, Assembled and (79) (United-Kingdom) (Italian) style Charms.

Bracelet Metal composition analysed as 9ct Yellow gold alloy, and stamped with 375 style hall/mark and brand/makers mark.

Bracelet presented with Yellow gold with (single) and separate "Heart" shaped, "Door-Key" and "Padlock" design "carve" and "engrave" design "Screws" and "key-Hole" patterned, 'standard' style "Clasp" type 'device' and "Assembly" style setting and presented with (single) and separate "Ring" setting, presented with 'fine' and 'Trace' design "Link" style "Safety-Chain" type 'device' and "Assembly" style setting and hinge and 'attached' to either end.

Bracelet presented with 'Medium' type, 'solid', and 'polish-finish' with hinged and 'integrated' and 'uniform' and 'sequential' and 'Curb' style "Links", and fitted with (79) assorted 9ct and 14ct Yellow gold "Charms" and applied and fitted with 'solder' type "Ring" settings, and hinge and 'attached' along 'complete' and 'entire' length.

### Charms:

Stamped with 9ct style hall/mark, presented with 'solid' style "Buzzy-Bee",  
Stamped with 375 style hall/mark, with Italy style guild/mark presented with 'hollow' style "Owl",  
Stamped with 375 style hall/mark, presented with 'solid' style "Ships-Wheel",  
Un-Stamped with style hall/mark, presented with 'solid' style "St Christopher",  
Un-Stamped with style hall/mark, presented with 'hollow' and Filigree style "Tear-Drop",  
Stamped with 375 style hall/mark, with Italy style guild/mark presented with 'hollow' style "Man on the Moon",  
Un-Stamped with style hall/mark, presented with 'hollow' style "Puff-Heart",  
Stamped with 375 style hall/mark, presented with 'hollow' style "Iron",  
Stamped with 375 style hall/mark, presented with 'solid' style "Heart, Anchor, Cross" (symbol) "Faith-Hope-Charity",  
Stamped with 375 style hall/mark, presented with 'hollow' style "Boxing-Glove",  
Stamped with 375 style hall/mark, presented with 'solid' style "Fern Leaf NZ",  
Un-Stamped with style hall/mark, presented with 'hollow' style "Boot",  
Stamped with 375 style hall/mark, with Italy style presented with 'hollow' style, "Puff-Fish",  
Stamped with 375 style hall/mark, with Italy style presented with 'hollow' style "Trout-Fish",  
Un-Stamped with style hall/mark, presented with 'solid' style "Palm-Tree",  
Stamped with 375 style hall/mark, with English style presented with 'hollow' style "Lantern",  
Stamped with 375 style hall/mark, presented with 'Solid' style "Yacht",  
Stamped with 9ct style hall/mark, presented with 'Solid' style pair of "Babies-Bootes",  
Stamped with 375 style hall/mark, with Italy style presented with 'hollow' style "Penguin",  
Stamped with 375 style hall/mark, presented with 'solid' style "Hawaiian Hula-Girl",  
Stamped with 375 style hall/mark, with Italy style presented with 'solid' style "Sail-Boat",  
Stamped with 375 style hall/mark, presented with 'solid' style "Bell",  
Un-Stamped with style hall/mark, presented with 'solid' style 'hollow' "Log-Drum",  
Stamped with 375 style hall/mark, with English style presented with 'solid' style, "Tower-Bridge",  
Un-Stamped with style hall/mark, presented with 'solid' style "Conical Shell",  
Stamped with 375 style hall/mark, with uno-a-erre style guild/mark presented with 'hollow' style "Apple",  
Stamped with 585 14K style hall/mark, presented with 'solid' style "Bird-cage",  
Stamped with 375 style hall/mark, with Italy style presented with 'hollow' style "high-heel Shoe",  
Stamped with 375 style hall/mark, presented with 'solid' style "Orchid-Flower",  
Stamped with 375 style hall/mark, with Italy style presented with 'hollow' style "Beer/Tankard",  
Un-Stamped with hall/mark, presented with 'solid' style "Whale-Tail",  
Un-Stamped with style hall/mark, presented with 'hollow' and 'hinged' style "Family-Bible".

ITEM 3. CONTINUED .../

CONTINUED ...//

10/45



GIA  
GEMOLOGICAL INSTITUTE OF AMERICA

NAJA  
NATIONAL ASSOCIATION OF JEWELLERS

GEMLINK  
GEM & JEWELLERY SPECIALISTS

Dennis D. Blacklaws

This Appraisal has been prepared in conformity with accepted professional ethics



# Dennis Blacklaws Ltd

LOWER HUTT:

10 Laings Road, Lower Hutt, 5010, New Zealand  
Phone & Fax (04) 566-3888

Email: dennis.blacklaws@gemlink.co.nz Website: www.gemlink.co.nz

Resident Appraiser/Valuer: Dennis D. Blacklaws

Gems & Jewellery Specialist - Appraiser/Valuer - Graduate Gemologist



Appraisal prepared for

Address



AppraisalPlus DBL06001

Ref No: 17004JL/PT25283

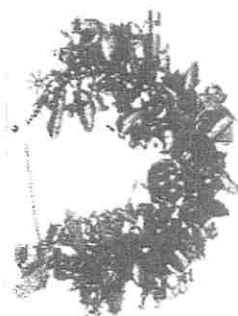
© Copyright 2021 All rights reserved  
Dennis Blacklaws Ltd

Date: 20 November, 2023

## ARTICLE

### ITEM 3. CONTINUED .../

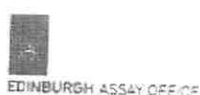
Stamped with 375 style hall/mark, with Italy style presented with 'hollow' style, "Jet-Plane".  
Stamped with 375 style hall/mark, presented with 'solid' style, initial "A".  
Stamped with 375 style hall/mark, presented with 'hollow' style, "Church".  
Stamped with 375 style hall/mark, with Italy style presented with 'hollow' style, "Champagne-Bottle".  
Un-Stamped with style hall/mark, presented with 'solid' style "hinged" pair of "Scissors".  
Stamped with 375 style hall/mark, with Italy style presented with 'hollow' style, "Lady-Bird".  
Un-Stamped with style hall/mark, presented with 'solid' style "Horse-Shoe".  
Stamped with 375 style hall/mark, presented with 'solid' style "Angel".  
Stamped with 375 style hall/mark, with English style 'hollow' style "Heliotrope/Bloodstone" and "Compass".  
Stamped with 375 style hall/mark, presented with 'solid' style "Ships Anchor".  
Stamped with 9ct style hall/mark, presented with 'solid' style "Kangaroo".  
Un-Stamped with style hall/mark, presented with 'solid' style "America's-"Cup" & "Peg".  
Stamped with 9ct style hall/mark, presented with 'solid' style "Norfolk-Island Cutter".  
Stamped with 375 style hall/mark, with English style presented with 'hollow' style "Tankard".  
Un-Stamped with style hall/mark, presented with 'solid' style "Gold-Nugget".  
Stamped with 375 style hall/mark, presented with 'solid' style "Conical Shell".  
Stamped with 375 style hall/mark, with uno-a-erre style guild/mark presented with 'hollow' style "Lou-Lou Doll".  
Stamped with 375 style hall/mark, with uno-a-erre style guild/mark presented with 'hollow' style pair of "Dolphin".  
Un-Stamped with style hall/mark, presented with 'solid' style "Scotch-Thistle".  
Stamped with 585 14K style hall/mark, presented with 'solid' style "Chinese Junk".  
Stamped with 585 14K style hall/mark, presented with 'solid' style "Bride-Groom".  
Stamped with 375 style hall/mark, with English style presented with 'hollow' style "Tea-Pot".  
Un-Stamped with style hall/mark, presented with 'hollow' style "Hand-Bag".  
Stamped with 375 style hall/mark, presented with 'solid' style "Harp".  
Un-Stamped with style hall/mark, presented with 'solid' style "Woman with Boomerang".  
Stamped with 375 style hall/mark, with English style presented with 'solid' style "St Pauls Cathedral".  
Stamped with 375 style hall/mark, presented with 'solid' style "half" and "Scallop Shell".  
Stamped with 9ct style hall/mark, presented with 'solid' style "Couple on park-bench under Umbrella".  
Un-Stamped with style hall/mark, presented with 'solid' style "Watering Can, Fork & Shovel".  
Un-Stamped with hall/mark, presented with 'hollow' style "Cocktail-Glass".  
Un-Stamped with hall/mark, presented with 'solid/hollow' style "Turtle".  
Stamped with 9ct style hall/mark, presented with 'solid' style "Spinning Wheel".  
Stamped with 375 style hall/mark, presented with 'solid' style "Teddy Bear".  
Stamped with 375 style hall/mark, presented with 'solid' style "Fiji Fan".  
Un-Stamped with style hall/mark, presented with 'solid' style "Easter Island Statue".  
Un-Stamped with hall/mark, presented with 'solid' style "Love" to front of "Envelope".  
Un-Stamped with style hall/mark, presented with 'solid' style "Star Fish".  
Stamped with 375 style hall/mark, presented with 'hollow' style, "Guitar".  
Un-Stamped with style hall/mark, presented with 'solid' style "Fan".  
Stamped with 375 style hall/mark, presented with 'solid' style "Orchid Flower".  
Stamped with 375 style hall/mark, presented with 'solid' style "Harp".  
Stamped with 375 style hall/mark, presented with 'solid' style "Eiffel Tower".  
Un-Stamped with style hall/mark, presented with 'solid' style "Jandal" with "Heart".  
Stamped with 375 style hall/mark, presented with 'solid' style "Map of Australia".  
Stamped with 375 style hall/mark, with Italy style presented with 'hollow' style "Cat".  
Un-Stamped with style hall/mark, presented with 'solid' style "Jandal".  
Un-Stamped with style hall/mark, presented with 'hollow' style "Thimble".



### ITEM 3. CONTINUED .../

CONTINUED ...//

11/45



GIA



*Dennis D. Blacklaws*  
Dennis D. Blacklaws

This Appraisal has been prepared in  
conformity with accredited professional ethics



# Dennis Blacklaws Ltd

LOWER HUTT

10 Laings Road, Lower Hutt, 5010, New Zealand  
Phone & Fax (04) 566-3668

Email: dennis.blacklaws@gemlink.co.nz Website: www.gemlink.co.nz

Resident Appraiser/Valuer: Dennis D. Blacklaws

Gems & Jewellery Specialist - Appraiser/Valuer - Graduate Gemologist



Appraisal prepared for

Address



AppraisalPlus DBL06001

Ref No: 17004JL/PT25283

© Copyright 2021 All rights reserved  
Dennis Blacklaws Ltd

Date: 20 November, 2023

## ARTICLE

### ITEM 3. CONTINUED .../

Curb "Link" dimensions: 7.74mm x 5.46mm x 1.45mm  
Oval "Link" dimensions: 2 x est 7.40mm x 6.07mm x 0.68mm  
Safety "Link" dimensions: x est 2.33mm x 1.77mm x 0.94mm  
"Clasp" dimensions: 1 x est 17.87mm x 13.09mm x 3.47mm

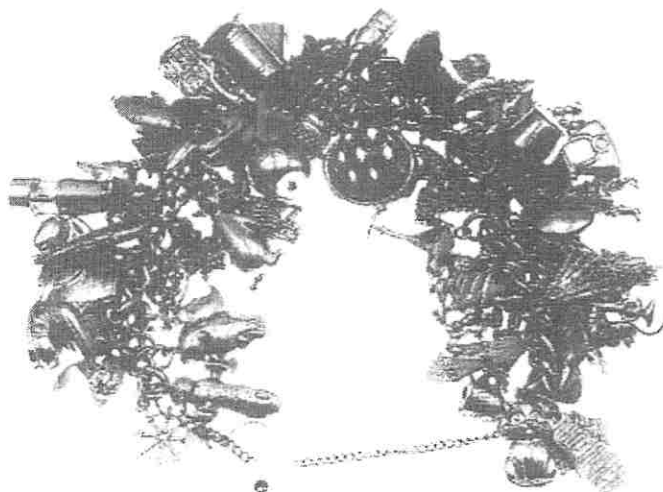
Bracelet of (7:00") length.

Bracelet Total Weight (130.20grams) with Total Metal Weight (129.00grams).  
Bracelet presenting near as 'New' and Safe condition and general overall surface wear.  
Photographs (X2/1).

COPY

R.M.V.N. \$23,820.00

I.M.V. \$20,960.00



CONTINUED .../

12/45



GIA

NAJA

GEMLINK

*Dennis D. Blacklaws*  
Dennis D. Blacklaws

This Appraisal has been prepared in  
conformity with accepted professional ethics