



Appraisers International Society

Dennis Blacklaws Ltd

LOWER HUTT:

10 Laings Road, Lower Hutt, 5010, New Zealand
Phone & Fax (04) 586-3668

Email: dennis.blacklaws@gemlink.co.nz Website: www.gemlink.co.nz

Resident Appraiser/Certified Valuer: Dennis D. Blacklaws



Gems & Jewellery Specialist - Graduate Gemologist - Advanced Valuation Specialist

Appraisal prepared for

Address

AppraisalPlus DBL06001

Ref No: 13950DB/LH24275

© Copyright 2018 All rights reserved
Dennis Blacklaws Ltd

Date: 23 October, 2018

ARTICLE

(Original) Fabricated, Bespoke/Hand-Crafted,- (13) Bezel, with (single) species: Quartz variety: Madeira Citrine synthesis: (Natural) object: (faceted Gemstone) phenomena: Nil transparent treatment: (Enhanced) origin: North America Africa Switzerland Myanmar Sri-Lanka Russia (Urals) (Worldwide) location: (un-Known) and (12) species: Diamond variety: Colourless type: (Natural) object: (faceted) treatment: (Non-Enhanced) origin: Un-Known with contemporary/modernist and avant-garde style (Solitaire) design Ring.

Ring Metal composition analysed as Rhodium-plated on top of 14ct White gold alloy, and stamped with 14Ct style hall/mark.

Ring presented with Rhodium-Plated on top of White gold, and plain, and flat, with half (1/2) round, and "reverse" tapered, with 4.02mm x 5.10mm x 1.16-2.21mm dimension and 'polish-finish' and "Shaped" and "Seamless" style band.

Ring presented with Rhodium-Plated on top of White gold, and flow-on to plain and cut-out and pierced, "in-situ" and "Navette" and "open" shaped, and "Buttress" style "shoulder" setting, placed and applied to either side.

Ring presented with Rhodium-Plated on top of White gold, with (6) and (single) and separate Diamonds, and (6) x (3) claw and (6) x (3) pillar, and flush and inset, cut-out and pierced, "in-situ" and "split-level" and "Buttress" design, and "shoulder" style 'pierced-back' and "Plaque" type "Assembly" mount settings, placed and applied across top of either side.

Ring presented with Rhodium-Plated on top of White gold, and Elevated, with (1) (single) and separate Citrine, and (4) claw and (4) 'solid' type pillar, with flush and inset, cut-out and pierced, "in-situ" and 'single' separate "Bezel" and "V" pattern, and 12.91-12.79mm x 10.03-9.85mm x 9.93mm dimension "Octagonal" and "Taper" shaped, "Tension" inset, style central mount "Assembly" setting.

Ring presented with "Assembly" setting placed across top of Rhodium-Plated on top of White gold, and 'fold-over' to "reverse" and 'Vee' shaped top and centre of band.

Centre Citrine, modified, and "Octagonal/Emerald" shaped, (Step) cut;

1 x est 12.34 x 9.87mmØ x 6.70mm L.W. Ratio 1.250:1

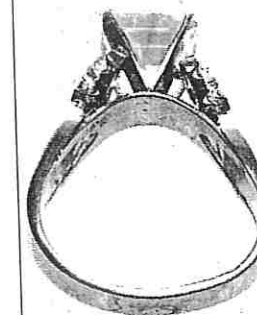
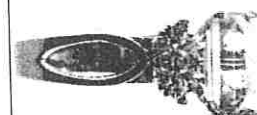
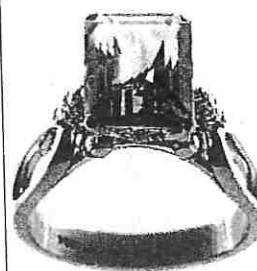
Est by Formula 1 x est 6.447ct

(1) (single) and separate (Natural) Citrine presenting semi-translucent/transparent (vivid) (Golden) very slightly Yellowish/Orange - Orange/Yellowish Hue, with Tone (7) with Saturation (4/5) and Clarity (VS).

GIA GemSet® colour Analysis

(1) (single) and separate (Natural) Citrine presenting Very Good symmetry and proportions, with Colour Banding and Colour Zoning and (nil) Window effect, and presenting High surface polish and Actinolite Goethite and fluid healing fracture and Brazil-Twinning effect under crossed-Nicol prisms (Polariscope) type inclusion scenes, applying (oblique lighting) and (immersion microscopy) technique, and presented in mount.

ITEM 11. CONTINUED .../



CONTINUED .../

28/86



EDINBURGH ASSAY OFFICE



GIA
GEMOLOGICAL
INSTITUTE OF
AMERICA



Dennis D. Blacklaws

This Appraisal has been prepared in conformity with accepted professional ethics of Appraisers International Society™ (USA) & The Jewellery Appraisers Society of N.Z. Inc.

Dennis Blacklaws Ltd

LOWER HUTT:

10 Laings Road, Lower Hutt, 5010, New Zealand
Phone & Fax (04) 566-3668

Email: dennis.blacklaws@gemlink.co.nz Website: www.gemlink.co.nz

Resident Appraiser/Certified Valuer: Dennis D. Blacklaws

Gems & Jewellery Specialist - Graduate Gemologist - Advanced Valuation Specialist

Appraisal prepared for
Address

AppraisalPlus DBL06001

Ref No: 13950DB/LH24275

© Copyright 2018 All rights reserved
Dennis Blacklaws Ltd

Date: 23 October, 2018

ARTICLE

ITEM 11. CONTINUED .../

Central Citrine, modified, and "Octagonal/Emerald" shaped, (Step) cut; CONTINUED/

With the mass production of **synthetic** twinned **Citrine**, we are unable to distinguish if **natural** or of **synthetic** origin **unless** natural inclusions are microscopic **visible**.
Laser tomography is currently the most **definite** method of **determination** and is **unavailable** in N.Z.
For the purposes of this appraisal **Natural** origin is assumed.

N.B. Statement/s of "Geographical Origin" included within this Appraisal are submitted by 'expert-opinion' including accumulative and analytical "Observations" and "Data" and the experience of the practitioner.

Side Diamonds, (MRSEC) modified and (Round) shaped "Eight" cut;

Est by Formula (12 x est 40 per ct) (G or Higher) (Vs1-SI2)

N.B. A number of "Random" presented Diamonds have by application and "in-situ" and applied type examination and analysis using "The Diamond Trading Co" (V2.03) Diamond-Sure™ screening "instrument" has indicated a PASS result for "Natural-Untreated" Diamonds.

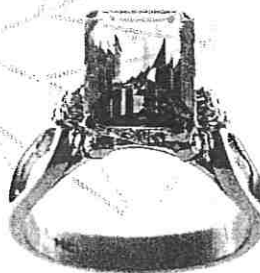
N.B. Citrine and Diamonds graded in mounts (*in-situ*). Diamond est Total (Est 0.300ct).
Immersion Microscopy analysis indicates Citrine of **un-known** origin
Citrine length ← & width → & depth ↓ and Diamonds diameter Ø & depth ↓
dimension measurements **estimated** due to mounts.
Diamonds colour graded under an (**ultraviolet-free**) colour/grading environment.
Diamonds body colour **Masked** due to mounts.
Citrine and Diamonds **NEED** to be removed from mounts for more accurate
Weight, Colour and Clarity grading and to **identify** if Clarity enhanced.

Diamonds presenting inert (**Nil**) and (**Faint**) weak - strong and cloudy - translucent and Bluish/Violetish and Bluish and **Fluorescent** colour reaction to L.w.U.v. radiation.

Ring Total Weight (8.20grams) with Total Metal Weight (6.85grams).
Ring presenting near as 'New' and Safe condition and general overall surface wear.
Finger size (Q:½) centre. Photographs (X2/1.).

R.M.V.N. \$4,570.00

I.M.V. \$4,410.00



CONTINUED ...//

29/86



EDINBURGH ASSAY OFFICE



GIA
GEMOLOGICAL
INSTITUTE OF
AMERICA



THE NATIONAL ASSOCIATION
OF JEWELLERY APPRAISERS



[Signature]
Dennis D. Blacklaws

This Appraisal has been prepared in conformity with accepted professional ethics of Appraisers International Society™ (USA) & The Jewellery Appraisers Society of N.Z. Inc.