



Appraisers International
Society

Dennis Blacklaws Ltd

LOWER HUTT:

10 Laings Road, Lower Hutt, 5010, New Zealand
Phone & Fax (04) 566-3668

Email: dennis.blacklaws@gemlink.co.nz Website: www.gemlink.co.nz

Resident Appraiser/Certified Valuer: Dennis D. Blacklaws



Gems & Jewellery Specialist - Graduate Gemologist - Advanced Valuation Specialist

Appraisal prepared for

Address

AppraisalPlus DBL06001

Ref No: 13950DB/LH24275

© Copyright 2018 All rights reserved
Dennis Blacklaws Ltd

Date: 23 October, 2018

ARTICLE

12. Imported, - (Original) "One-Off" Commission, Fabricated, Bespoke/Hand-Crafted, -
(7) Bezel, with (single) Jade species: (Jadeite) synthesis: Natural object:
(Gemstone) variety: (Imperial-Like) phenomena: (Nil) translucent opaque treatment:
(Non-enhanced) origin: Burma (Myanmar) Vietnam China Russia North America Japan
Guatemala Europe location: (Unknown) with (6) species: Diamond variety: Colourless
synthesis: (Natural) object: (faceted) treatment: (Non-Enhanced) origin: Un-Known
and vintage and classical/traditional style (Solitaire) design Ring.

Ring Metal composition analysed as 14ct Yellow gold alloy, and un-stamped with
hall/mark, and presented with Yellow gold and plain, and flat and tapered, with
'polish-finish' with 3.80mm- x 2.29mm- x 0.71-1.01mm1 dimension "Seamless"
style shank.

Ring presented with Yellow gold, and flow-on to cut-out and pierced, plain and
'inverted' to 'split-level' shaped, "Vee" pattern, and "Buttress" style "shoulder"
setting, placed and applied to either side.

Ring presented with White gold, and Elevated, with with (1) (single) and separate
Jadeite, and (4) claw and (4) 'wire' type pillar, with flush and inset, with cut-out and
pierced, "in-situ" and with 15.68mm- x 11.63mm- x 5.78-4.76mm1 dimension
'double' separate "Bezel" design, 'Oval' and 'Taper' shaped, Tension inset, type
central style mount "Assembly" setting.

Ring presented with Yellow gold, and Elevated, with (3) (single) and separate
Diamonds, and (2) x (3) claw and (2) x (3) pillar, with (1) (1) (single) and separate
low bead Pavé flush and inset, with cut-out and pierced, "in-situ" and 'single'
separate "Bezel" design, 'Round' and "Parallel" shaped, Tension inset, type mount
"Assembly" style settings, 'split-level' and placed to either and 'immediate' side
of centre, and inset between cut-out and pierced, "V" pattern, shank ends.

Centre Jadeite, modified, and "Oval" shaped, 'medium and en-Cabochon cut;

1 x est 17.35 x 11.64mmØ x 5.29mm L.W. Ratio 1.491:1

Est by Formula 1 x est 9.420ct

(1) (single) and (Natural) (Jadeite) presenting semi-translucent - opaque
(C) (Mottled)- Cloudy - (Pure Mottled (Intense) with
Glassy Apple Green - Moss in Snow Hue with
Translucency and (5-1) with
Texture with (5 - 1) and (L) (FM) - (DK) Tone (1-5)

(1) (single) and (Natural) (Jadeite) presenting High surface
polish with Actinolite, Hornblende, Tremolite and Oxide type
scenes, applying (oblique lighting) and (immersion microscopy)
technique, presented "in-situ" to mount.

N.B. Check Spectrometer Analysis.

It is an internationally recognised trade practice to treat gems of this variety by various methods to enhance the colour and/or
clarity, applying Microscopy technique indicates NIL evidence of clarity enhancement and fracture filling i.e. Oil and/or
Opticon proprietary process of Epoxy is apparent in this gem. -
Extent: Nil/Minor Stability: Stable under normal wearing conditions. Prevalence: Never/Rarely/Commonly

ITEM 12. CONTINUED .../

CONTINUED .../

30/86



EDINBURGH ASSAY OFFICE

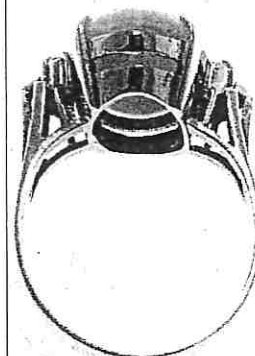


GIA
GEMOLOGICAL
INSTITUTE OF
AMERICA



Dennis D. Blacklaws

This Appraisal has been prepared in
conformity with accepted professional ethics
of Appraisers International Society™ (USA) &
The Jewellery Appraisers Society of N.Z. Inc.





Appraisers International
Society

Dennis Blacklaws Ltd

LOWER HUTT:

10 Laings Road, Lower Hutt, 5010, New Zealand
Phone & Fax (04) 566-3668

Email: dennis.blacklaws@gemlink.co.nz Website: www.gemlink.co.nz

Resident Appraiser/Certified Valuer: Dennis D. Blacklaws



Gems & Jewellery Specialist - Graduate Gemologist - Advanced Valuation Specialist

Appraisal prepared for

Address

AppraisalPlus DBL06001

Ref No: 13950DB/LH24275

© Copyright 2018 All rights reserved
Dennis Blacklaws Ltd

Date: 23 October, 2018

ARTICLE

ITEM 12. CONTINUED .../

Central Jadeite, modified, and "Oval" shaped, 'medium and en-Cabochon cut; CONTINUED/

N.B. Positive Origin Identification may alter assessed value of submitted Jadeite.

This can only be established by an International Laboratory i.e. (Gubelin) and/or (GRS/SWISSLAB) specialising in (Origin) identification.

For the purposes of this Appraisal the Jadeite has been appraised/valued as (Medium -High) quality.

N.B. Statement/s of "Geographical Origin" included within this Appraisal are submitted by 'expert-opinion' including accumulative and analytical "Observations" and "Data" and the experience of the practitioner.

Surround Diamonds, (MRSEC) modified and (Round) shaped "Eight" cut;

Est by Formula (6 x est 75 per ct) (I or Higher) (SI1-II)

N.B. A number of "Random" presented Diamonds have by application and "in-situ" examination and analysis using "The Diamond Trading Co" (V2.03) Diamond-Sure™ screening "instrument" indicated a PASS result for "Natural-Untreated" Diamonds.

N.B. Jadeite and (Natural) Diamonds graded (*in-situ*) in mounts. Diamonds Est Total (Est 0.080ct).

Immersion microscopy indicates Jadeite of (Un-Known) origin.

Jadeite length← & width→ & depth↑ and Diamonds diameterØ & depth↓ dimension measurements estimated due to mounts.

Diamonds colour graded under an (ultraviolet-free) colour/grading environment.

Diamonds body colour Masked due to mounts.

Jadeite and Diamonds NEED to be removed from mounts for more accurate

Weight, Colour and Clarity grading and to identify if Clarity enhanced.

Diamonds presenting inert (*Nil*) and (*Faint*) weak and cloudy - translucent with Bluish and *Fluorescent* and colour reaction to L.w.U.v. radiation.

Ring Total Weight (6.23grams) with Total Metal Weight (4.33grams).

Ring presenting near as 'New' and Safe condition and general overall surface wear.

Finger size (R) centre. Photographs (X2/1.).

R.M.V.N. \$3,360.00

I.M.V. \$3,170.00

Item No 12. for (courtesy) "WIKIPEDIA" REFERENCES CONTINUED .../

CONTINUED ...//

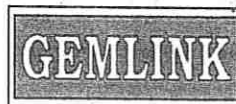
31/86



EDINBURGH ASSAY OFFICE



GIA
GEMOLOGICAL
INSTITUTE OF
AMERICA



Dennis D. Blacklaws

This Appraisal has been prepared in conformity with accepted professional ethics of Appraisers International Society™ (USA) & The Jewellery Appraisers Society of N.Z. Inc.



Appraisers International
Society

Dennis Blacklaws Ltd

LOWER HUTT:

10 Laings Road, Lower Hutt, 5010, New Zealand
Phone & Fax (04) 566-3668

Email: dennis.blacklaws@gemlink.co.nz Website: www.gemlink.co.nz

Resident Appraiser/Certified Valuer: Dennis D. Blacklaws



Gems & Jewellery Specialist - Graduate Gemologist - Advanced Valuation Specialist

Appraisal prepared for

Address

AppraisalPlus DBL06001

Ref No: 13950DB/LH24275

© Copyright 2018 All rights reserved
Dennis Blacklaws Ltd

Date: 23 October, 2018

ARTICLE

Item No 12. for (courtesy) "WIKIPEDIA" REFERENCES CONTINUED .../



(courtesy) ref: Wikipedia

Jadeite is a "Pyroxene" mineral with composition "Sodium" Na "Aluminium" Al "Silicon" Si "Oxygen" O. It is "Monoclinic". It has a "Mohs hardness" of about 6.5 to 7.0 depending on the composition. The mineral is dense, with a specific gravity of about 3.4. Jadeite forms solid solutions with other pyroxene such as "Augite" and "Diopside" (CaMg-rich), and "Kosmochlor". Pyroxenes rich in both the jadeite and augite are known as "Omphacite". The name jadeite is derived "French language", l'ejade and "Latin language" la" lang from the "Spanish language" phrase "piedra de ijada" which means "stone of the side". It was believed to cure "Kidney stones" if it was rubbed against the side of the afflicted person's body. The Latin version of the name, lapis nephriticus, is the origin of the term "Nephrite", which is also a variety of "Jade". Jadeite is formed in "Metamorphic rock" under high pressure and relatively low temperature conditions. "Albite" is a common mineral of the Earth's crust, and it has a specific gravity of about 2.6, much less than that of jadeite. With increasing pressure, albite breaks down to form the high-pressure assemblage of jadeite plus "Quartz". Minerals associated with jadeite include: "Glaucophane" "Lawsonite" "Muscovite" "Aragonite" "Serpentine group" and "Quartz" rocks that consist almost entirely of jadeite are called "Jadeitite". In all well-documented occurrences, jadeitite appears to have formed from "Subduction zone" fluids in association with "Serpentinite". Jadeitite is resistant to weathering, and boulders of jadeitite released from the serpentine-rich environments in which they formed are found in a variety of environments. Jadeite's color commonly ranges from white through pale apple green to deep green but can also be blue-green (like the recently rediscovered "Olmec Blue" jade), pink, lavender and a multitude of other rare colors. Chloromelanite is a very dark green to black variety. Color is largely affected by the presence of trace-elements such as chromium and iron. Its translucence can be anywhere from entirely solid through opaque to almost clear. Variations in color and translucence are often found even within a single specimen. Jade is reported from "China" "California", USA, "Myanmar" - "New Zealand" "Guatemala" "Itogawa, Niigata" Japan; other localities of jadeite include "China" "Burma" "Kazakhstan" "Russia" "British Columbia" in Canada, The "North Americas" and "Italy" and Greece and (Europe) - "Turkestan"

CONTINUED ...//

32/86



EDINBURGH ASSAY OFFICE



GIA
GEMOLOGICAL
INSTITUTE OF
AMERICA



[Signature]
Dennis D. Blacklaws

This Appraisal has been prepared in conformity with accepted professional ethics of Appraisers International Society™ (USA) & The Jewellery Appraisers Society of N.Z. Inc.