

DUNBAR  
SLOANE

SINCE 1919



Antique & Decorative Arts  
The Wright Estate Doll Collection

19 - 21 MAY 2020







## Jewellery, Antique & Decorative Arts

19 & 20 MAY 2020

**Tuesday 19 May 2020**

**12 noon start** - Session One: Gold Coins, Watches & Fine Jewellery

Lot 1 - 425

**Wednesday - 20 May 2020**

**10am start** - Session Two: Porcelain & Pottery, Glass, Asian Arts, Woods & Metals

Lot 450 - 662

**2pm start** - Session Three: Maori & Pacific Artefacts

Lot 663 - 713

**3pm start** - Session Four: Sterling Silver

Lot 716 - 829

**5pm start** - Session Five: Framed Works, Period Furniture

Lot 850 - 1056

## The Wright Estate Doll Collection

**Thursday 21 May 2020**

**12 noon start** - Lot 1060 - 1385

### LIVE BIDDING

Please note we now offer our own live online bidding service.

For instruction see our website:

[www.dunbarsloane.co.nz](http://www.dunbarsloane.co.nz)

Online registrations and absentee bids must be made at least 2 hours before the auction commences, or 24 hours if you are an International client

### BUYERS PREMIUM

Each lot is subject to 17% + GST buyers premium

### ABSENTEE BIDDING/ TELEPHONE BIDDING

If you are unable to attend the auction you may submit an absentee bid (form at reverse or online [www.dunbarsloane.com](http://www.dunbarsloane.com)) Telephone bidding can be arranged on lots over \$500 in value. Note we assume you have received a condition report or inspected the item prior to bidding. Telephone lines are limited and are procured on a first registered basis. We accept no responsibility if for any reason we are unable to contact you, and for this reason encourage clients to leave a covering bid.

### LOCATION / ENQUIRIES

Bettina Frith / Anthony Gallagher

+64 4 472 1367 / 0274 713 667

[info@dunbarsloane.co.nz](mailto:info@dunbarsloane.co.nz)

PO Box 224, Wellington 6140

[www.dunbarsloane.co.nz](http://www.dunbarsloane.co.nz)



  
ROLEX

  
ROLEX







# **Session One**

## **Gold Coins, Watches**

### **Fine Jewellery**

**Tuesday 19 May - 12 noon Start**

**Lot 1 - 425**

**All lots photographed online [www.dunbarsloane.com](http://www.dunbarsloane.com)**

**1**  
**1861 Gold Sovereign**  
\$450 - \$550

**2**  
**1978 Gold Sovereign**  
\$450 - \$550

**3**  
**1976 Gold Sovereign**  
\$450 - \$550

**4**  
**1974 Gold Sovereign**  
\$450 - \$550

**5**  
**1979 Gold Sovereign**  
\$450 - \$550

**6**  
**1896 Gold Sovereign**  
\$450 - \$550

**7**  
**1896 Gold Sovereign**  
\$450 - \$550

**8**  
**1880 Gold Sovereign**  
\$450 - \$550

**9**  
**1901 Gold Sovereign**  
\$450 - \$550

**10**  
**1911 Gold Sovereign**  
\$450 - \$550

**11**  
**1883 Gold Half Sovereign**  
\$200 - \$300

**12**  
**1926 Gold Half Sovereign**  
\$200 - \$300

**13**  
**1926 Gold Half Sovereign**  
\$200 - \$300

**14**  
**1926 Gold Half Sovereign**  
\$200 - \$300

**15**  
**1926 Gold Half Sovereign**  
\$200 - \$300

**16**  
**1926 Gold Half Sovereign**  
\$200 - \$300

**17**  
**1926 Gold Half Sovereign**  
\$200 - \$300

**18**  
**1926 Gold Half Sovereign**  
\$200 - \$300

**19**  
**1926 Gold Half Sovereign**  
\$200 - \$300

**20**  
**1926 Gold Half Sovereign**  
\$200 - \$300

**21**  
**1926 Gold Half Sovereign**  
\$200 - \$300

**22**  
**1926 Gold Half Sovereign**  
\$200 - \$300

**23**  
**1926 Gold Half Sovereign**  
\$200 - \$300

**24**  
**1926 Gold Half Sovereign**  
\$200 - \$300

**25**  
**1926 Gold Half Sovereign**  
\$200 - \$300

**26**  
**1926 Gold Half Sovereign**  
\$200 - \$300

**27**  
**1926 Gold Half Sovereign**  
\$200 - \$300

**28**  
**1910 Gold Sovereign**  
\$400 - \$550

**29**  
**1910 Gold Sovereign**  
\$400 - \$550

**30**  
**1912 Gold Sovereign**  
\$400 - \$550

**31**  
**1915 Gold Sovereign**  
\$400 - \$550

**32**  
**1925 Gold Sovereign**  
\$400 - \$550

**33**  
**1925 Gold Sovereign**  
\$400 - \$550

**34**  
**1925 Gold Sovereign**  
\$400 - \$550

**35**  
**1890 Gold Sovereign**  
\$400 - \$550

**36**  
**1891 Gold Sovereign**  
\$400 - \$550

**37**  
**1892 Gold Sovereign**  
\$400 - \$550

**38**  
**1895 Gold Sovereign**  
\$400 - \$550

**39**  
**1900 Gold Sovereign**  
\$400 - \$550

**40**  
**1900 Gold Sovereign**  
\$400 - \$550

**41**  
**1910 Gold Sovereign**  
\$400 - \$550

**42**  
**1918 Gold Sovereign**  
\$400 - \$550

**43**  
**1928 Gold Sovereign**  
\$400 - \$550

**44**  
**1928 Gold Sovereign**  
\$400 - \$550

**45**  
**1929 Gold Sovereign**  
\$400 - \$550

**46**  
**1931 Gold Sovereign**  
\$400 - \$550

**47**  
**1963 Gold Sovereign**  
\$400 - \$550

**48**  
**1966 Gold Sovereign**  
\$400 - \$550

**49**  
**1966 Gold Sovereign**  
\$400 - \$550

**50**  
**1966 Gold Sovereign**  
\$400 - \$550

**51**  
**1966 Gold Sovereign**  
\$400 - \$550

**52**  
**1980 Gold Sovereign**  
\$400 - \$550

**53**  
**1971 South African 2 Rand Gold Coin**  
\$400 - \$600

**54**  
**1977 South African 2 Rand Gold Coin**  
\$400 - \$600

**55**  
**1978 South African 2 Rand Gold Coin**  
\$400 - \$600

**56**  
**1978 South African 2 Rand Gold Coin**  
\$400 - \$600

**57**  
**1978 South African 2 Rand Gold Coin**  
\$400 - \$600

**58**  
**1983 South African 2 Rand Gold Coin**  
\$400 - \$600

**59**  
**1983 South African 2 Rand Gold Coin**  
\$400 - \$600

**60**  
**1983 South African 2 Rand Gold Coin**  
\$400 - \$600

**61**  
**1977 South African 1 Rand Gold Coin**  
\$200 - \$300

**62**  
**1979 South African 1 Rand Gold Coin**  
\$200 - \$300

**63**  
**1979 South African 1 Rand Gold Coin**  
\$200 - \$300

**64**  
**1979 South African 1 Rand Gold Coin**  
\$200 - \$300

**65**  
**1979 South African 1 Rand Gold Coin**  
\$200 - \$300

**66**  
**1983 South African 1 Rand Gold Coin**  
\$200 - \$300

**67**  
**1983 South African 1 Rand Gold Coin**  
\$200 - \$300





54



55



69



70



71



72



73



75



87



76



77



93



86



78



80



81



82



85

- 68**  
**1983 South African 1 Rand Gold Coin**  
\$200 - \$300
- 69**  
**1813 French 20 Franc Gold Coin**  
\$400 - \$600
- 70**  
**1915 100 Corona Franz-Joseph I Austria Gold Coin Re-Strike**  
\$1,000 - \$1,500
- 71**  
**1915 1 Ducat Franz Joseph I Austria Gold Coin Re-strike**  
\$500 - \$800
- 72**  
**1905 Gold Sovereign Mounted on Bar Brooch**  
\$400 - \$500
- 73**  
**1915 Half Gold Sovereign** with brooch mounts (no pin) engraved REB  
\$200 - \$300
- 74**  
**NZ 9ct Medallion** engraved initialled circle disc framed with fern fronds, reverse presentation dated 20.7.09  
\$150 - \$250
- 75**  
**1912 Gold Sovereign Pendant** 9ct mount  
\$500 - \$600
- 76**  
**18ct Mounted Five Sovereign Bracelet**  
five 1912 sovereigns in double scroll rail link bracelet mount  
\$3,500 - \$4,500
- 77**  
**Rotherhams 9ct Open Face Lever Wind Pocket Watch** on 9ct graduated curb link Albert chain with plain circular 9ct sovereign case  
'18 replacement \$4,670  
\$1,400 - \$1,800
- 78**  
**Dawsons Ltd, Dunedin 9ct Hunter Cased Pocket Watch** 'The Carlton' with presentation inscription dated 1933 on gold plated curb link Albert chain with original box  
\$800 - \$1,000
- 79**  
**S/S Open Face Key Wind Pocket Watch**  
machine engraved silvered dial, case London 1848  
\$100 - \$200
- 80**  
**Roxley Ladies All 18ct Gold Wrist Watch**  
Oyster perpetual with dateadjust chronometer, ten diamond dial on bracelet strap. Original box and certificate  
\$15,000 - \$18,000
- 81**  
**Must de Cartier Tank Argent 925 Vermeil Ladies Wrist Watch** on Cartier black leather strap (battery replaced July 2019)  
\$1,000 - \$1,500
- 82**  
**Jaeger Le Coultre 18ct Gents Slimline Dress Wrist Watch** on worn leather strap  
\$600 - \$800
- 83**  
**Girard Perregaux Gents Gold Plated Steel Wrist Watch** gilt dial with alarm dial on worn leather strap  
\$400 - \$600
- 84**  
**Girard Perregaux Gents Gold Plated Dress Wrist Watch** gilt dial on integral tight mesh strap with textured finish in original box  
\$200 - \$400
- 85**  
**Tissot All 18ct Gold Ladies Dress Wrist Watch** plain circular gilt dial on integral tight feathered strap  
\$1,000 - \$1,400
- 86**  
**18ct Tiki Pendant on Chain** traditional tiki form on 14ct rail link Albert chain 56cm  
\$4,000 - \$5,000
- 87**  
**Early C20th Greenstone Rail Albert Chain**  
gold plated bright cut mounts 35cm length  
\$400 - \$600
- 88**  
**Early C20th Greenstone Rail Albert Chain**  
9ct mounted with central shield (clips plated) 29cm  
\$400 - \$600
- 89**  
**Late C19th Hair Twist Plate Albert Chain**  
with 9ct masonic medallion attached, NZ maker  
\$100 - \$200
- 90**  
**Late C19th (15ct) Cats Eye Bracelet** eight graduating claw mount shells, no makers mark  
\$600 - \$800
- 91**  
**Early C20th 9ct Portrait Cameo Brooch**  
oval frame marked Rein, of Invercargill  
\$400 - \$600
- 92**  
**Late C19th (15ct) Greenstone Stickpin** oval panel crown claw mounted  
Provenance: belonged to Captain Richard John Spotswood Seddon, Richard Seddon NZ Prime Minister's son  
\$500 - \$800
- 93**  
**Mid C20th 9ct Greenstone Necklace and Bracelet** necklace of four rectangular panels supporting pendant drop with five panel matching bracelet  
\$800 - 1,200
- 94**  
**.925 Paua Necklace** long and short rectangular paua panels  
\$100 - \$200
- 95**  
**Pair 9ct Greenstone Cufflinks** gold mounted rectangular and oval panels in Stewart Dawsons Box together Koha boxed paua and gilt cufflinks and s/s fern lapel pin  
\$200 - \$300
- 96**  
**Colonial 9ct Fancy Double Bar Brooch**  
central panel set with pink doublet, all scroll framed (fault)  
markers mark RR  
\$100 - \$200
- 97**  
**Two 1906-07 New Zealand International Exhibition Prize Medals** in silver and silver gilt awarded to Mrs R Schmidt for Best Doll in Exhibition and 1st Doll, with original Gold Medal cards  
\$300 - 500
- 100**  
**18ct Five Stone Diamond Bridge Ring**  
scroll claw set graduating round brilliant cuts approx 0.75cts  
\$1,000 - \$1,400
- 101**  
**14ct Solitaire Diamond Ring** modern four corner claw set round brilliant cut approx 0.50cts  
\$1,000 - \$1,500
- 102**  
**All Platinum Art Deco Solitaire Diamond Ring** hexagonal box set round brilliant cut approx 0.40cts with six shoulder diamonds '19 replacement \$4,800  
\$1,400 - \$1,600
- 103**  
**All Platinum 40stone Diamond Cluster Ring** five central rub-over set round brilliant cuts approx 0.60cts tdw with pave set surround and channel set curve band '19 replacement 8,000  
\$2,000 - \$2,500



AUTORE



- 104**  
**Art Deco All Platinum Five Stone Diamond Ring** central raised box set old European cut diamond approx 0.69cts with four surrounding diamonds  
'19 replacement \$7,700  
\$2,400 - \$2,800
- 105**  
**All Platinum Solitaire Diamond Ring and Band** modern four claw set princess cut approx 0.51cts with ten channel set shoulder diamonds with matching 15stone princess cut channel set band  
'20 replacement \$8,770  
\$3,000 - \$3,500
- 106**  
**Charles Greig 18ct Yellow & White Gold Solitaire Diamond Ring** wide fancy band, rub-over set round brilliant cut approx 1.25cts  
'20 replacement \$28,900  
\$6,000 - \$8,000
- 107**  
**22ct & Platinum Solitaire Diamond Ring** rub-over set old European cut approx 2.84cts on hammered finish wide band  
'20 replacement \$37,500  
\$8,000 - \$10,000
- 108**  
**All Platinum Solitaire Diamond Ring and Band** raised triple corner claw set round brilliant cut approx 1.60cts with six pave set shoulder diamonds, matching eight stone band  
'19 replacement \$36,500  
\$12,000 - \$15,000
- 109**  
**18ct 39stone Diamond Cluster Ring** modern raised four claw set round brilliant cut approx 3.05cts on fancy platform of individual set diamonds  
'18 replacement \$56,000  
\$20,000 - \$24,000
- 110**  
**14ct 37stone Diamond Cluster Ring** central raised six claw set round brilliant cut approx 0.69cts on 'star-burst' platform of round brilliant and baguette cut diamonds approx 2.33cts tdw  
'18 replacement \$8,800  
\$3,000 - \$3,500
- 111**  
**All Platinum Solitaire Diamond Ring** four claw set modern round brilliant cut approx 1.01cts with two baguette cut shoulder diamonds  
'19 replacement \$21,000  
\$5,000 - \$6,000
- 112**  
**18ct Sapphire and Diamond Cluster Ring** central light blue Ceylonese emerald cut sapphire approx 3.11cts with surround pave set dome of round brilliant cut 82 diamonds approx 2.99cts tdw  
'16 replacement \$22,710  
\$5,000 - \$6,000
- 113**  
**18ct White Gold 15stone Sapphire & Diamond Cluster Ring** central antique cushion cut light blue sapphire approx 3.41cts with surround 14 round brilliant cut diamonds approx 1.26ct  
'18 replacement \$12,995  
\$3,000 - \$4,000
- 114**  
**Pair 18ct Sapphire & Diamond Cluster Earrings** each of central oval dark blue sapphire with two tier surround of 36 round brilliant cut diamonds  
\$800 - \$1,200
- 115**  
**18ct 131stone Sapphire & Diamond Bracelet** eight oval natural blue sapphires with diamonds surroundings in rectangular frame approx 3.79cts tdw  
'19 replacement \$17,000  
\$6,000 - \$7,000
- 116**  
**18ct 67stone Sapphire & Diamond Bracelet** five natural blue sapphires with cluster surrounds of round brilliant and baguette cut clusters on fancy curve link bracelet  
'19 replacement \$7,500  
\$2,500 - \$3,000
- 117**  
**18ct White Gold 40stone Sapphire & Diamond Fancy Bracelet** eight oval bright blue sapphires approx 2.40cts interspaced with open lozenge panel pave set with diamonds, approx 3.725cts tdw  
'18 replacement \$16,995  
\$4,000 - \$5,000
- 118**  
**All Platinum Art Deco Ladies Diamond & Sapphire Wrist Watch** rectangular narrow dial on articulated box link strap set with 36 square cut sapphires and 42 old European cut diamonds  
\$5,500 - \$6,500
- 119**  
**Ladies All 14ct White Gold Girard Perregaus Cocktail Wrist Watch** 16stone diamond set crossed ribbon design mounts on integral mesh strap (two diamonds missing)  
'18 replacement \$1,795  
\$500 - \$600
- 120**  
**All Platinum 45stone Diamond Tennis Type Bracelet** five links each with round brilliant cut approx 2.25cts tdw with diamonds flanking and rail links of three pave set diamonds approx 2cts tdw  
'19 replacement \$23,750  
\$6,000 - \$8,000
- 121**  
**18ct White Gold 63stone Diamond Spray Brooch** central cluster of four claw set diamonds on four ribbon loop design, round brilliant cuts approx 2.15tdw  
'18 replacement \$9,995  
\$2,800 - \$3,400
- 122**  
**18ct White Gold 83stone Diamond Spray Brooch** ribbon loop design all pave set with round brilliant and baguette cut diamonds approx 2.30cts tdw  
'20 replacement \$14,800  
\$4,000 - \$5,000
- 123**  
**18ct White Gold 42stone Diamond Bow Spray Brooch** individual and pave set brilliant and single cut diamonds approx 0.90cts tdw  
\$1,400 - \$1,800
- 124**  
**Pair 18ct White Gold Fancy Diamond Cluster Earrings** each of a slightly domed square platform all pave set with round brilliant cuts colour range of H to black and light brown, pierced  
'19 replacement \$9,950  
\$2,000 - \$2,500
- 125**  
**Pair 18ct White Gold Diamond Half Hoop Earrings** each pave set with 30 round brilliant and baguette cut diamonds, pierced  
\$800 - \$1,200
- 126**  
**18ct White Gold Solitaire Diamond Ring** modern raised platform design of raised four claw set round brilliant cut approx 0.64cts with single loop shoulder pave set with 12diamonds and 3baguette cuts  
'19 replacement \$9,300  
\$2,500 - \$3,000
- 127**  
**18ct Red and White Gold Diamond Snake Ring** twin heads set with green garnet eyes, scaled band studded with 84diamonds  
'19 replacement \$6,600  
\$3,000 - \$3,500
- 128**  
**All Platinum 29stone Diamond & Sapphire Cluster Ring** fancy platform of central three vertical set brilliant cut diamonds approx 0.36cts studded surround of diamonds and corner sapphires  
'19 replacement \$3,600  
\$1,200 - \$1,500





104



106



107



108



109



111



112



113



134



135



136



137



160



161



166



168



169



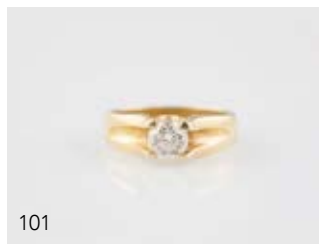
170

- 129**  
**18ct White Gold Solitaire Diamond Ring** central old European cut on fancy filigree gallery setting approx 0.40cts  
 '19 replacement \$3,800  
 \$1,000 - \$1,400
- 130**  
**All Platinum Solitaire Diamond Ring** raised corner claw set old European cut approx 0.65cts with two shoulder diamonds  
 '19 replacement \$5,400  
 \$1,400 - \$1,800
- 131**  
**18ct White Gold 80stone Fancy Diamond Band Ring** five floret clusters on five pave set diamond bands approx 2.84cts tdw  
 '19 replacement \$11,000  
 \$3,000 - \$4,000
- 132**  
**18ct White 15stone Diamond Floret Cluster Ring** central four claw set round brilliant cut with double row surround approx 1.80cts tdw  
 '19 replacement \$8,800  
 \$3,000 - \$4,000
- 133**  
**14ct White Gold 16stone Diamond Cluster Ring** two central round brilliant cuts approx 0.50cts with open oval frame of individual set diamonds  
 '19 replacement \$5,600  
 \$1,200 - \$1,500
- 134**  
**18ct White Gold 15stone Emerald & Diamond Cluster Ring** central square bright green emerald approx 1.35cts flanked by two emerald cut diamonds approx 0.80cts with surround of individual four claw set round brilliant cut diamonds approx 0.596  
 '18 replacement \$17,719  
 \$5,000 - \$6,000
- 135**  
**All Platinum Three Stone Emerald & Diamond Ring** central natural bright green square cut emerald with two round brilliant cuts approx 1.76cts tdw  
 '20 replacement \$23,500  
 \$7,000 - \$10,000
- 136**  
**All Platinum 19stone Emerald & Diamond Cluster Ring** round mixed cut treated natural bright green emerald approx 5.13cts with surround of round brilliant cuts approx 0.50cts  
 '20 replacement \$23,000  
 \$5,000 - \$6,000
- 137**  
**All Platinum 19stone Emerald & Diamond Cluster Ring** rectangular treated natural bright green emerald approx 2.77cts with surround brilliant cuts approx 0.50cts  
 '19 replacement \$13,900  
 \$4,000 - \$5,000
- 138**  
**18ct 113stone Synthetic Emerald & Diamond Cluster Band** central oval bright green emerald with ten princess cut shoulder diamonds and pave set round brilliant cut side bands approx 2cts tdw  
 '17 replacement \$8,900  
 \$2,000 - \$2,800
- 139**  
**All Platinum 27stone Aquamarine & White Spinel Cluster Ring** rectangular cushion cut aquamarine approx 6.81cts with surround of white synthetic spinels  
 \$2,500 - \$3,500
- 140**  
**All Platinum 23stone Tourmaline & Diamond Cluster Ring** fancy gallery set cushion cut light blue/green tourmaline approx 6.70cts with surround round brilliant cut diamonds  
 '20 replacement \$9,500  
 \$3,000 - \$3,500
- 141**  
**18ct White Gold 65stone Aquamarine & Diamond Fancy Ring** oval mixed 2.20ct aquamarine, frame and trellis design shoulders all diamond set approx 1.30cts tdw  
 '19 replacement \$7,750  
 \$2,000 - \$3,000
- 142**  
**14ct White Gold 41stone Aquamarine & Diamond Cluster Ring** central oval aquamarine approx 1.15ct with all pave set diamond surround and shoulders on beaded finish galleries  
 '19 replacement \$5,500  
 \$1,500 - \$2,000
- 143**  
**18ct 89stone Emerald & Diamond Fancy Pendant** raised central four claw set emerald cut natural bright green emerald approx 4.60cts with surround of baguette, marquise and round brilliant cut diamonds on 14ct flat curb link chain  
 '18 replacement \$55,000  
 \$20,000 - \$25,000
- 144**  
**14ct Emerald & Diamond Suite** ring of 33stone central emerald approx 1.04cts with surround of round and baguette cut diamonds with matching pair earrings and pendant  
 '16 replacement \$13,600  
 \$2,000.00 - \$4,000.00
- 145**  
**18ct White Gold 25stone Emerald & Diamond Bracelet** modern design of five created bright green emeralds interspaced with round brilliant cut diamonds on textured finish panel link bracelet approx 0.50cts tdw  
 '18 replacement \$8,995  
 \$2,400 - \$2,800
- 146**  
**All Platinum Jade & Diamond Spray Brooch** twelve leaf panels of bright green jade with stem and ribbon scroll all pave set with diamonds approx 0.62cts tdw  
 '19 replacement \$6,300  
 \$1,500 - \$2,000
- 147**  
**18ct White Gold Fine Jade & Diamond Pendant** lozenge three bead carved panel on diamond surround platform  
 \$400 - \$800
- 148**  
**14ct Fine Amber & Mutton Fat Jade Pendant** reticulated scroll carved on flat curb link neck chain  
 \$1,200 - \$1,500
- 149**  
**18ct Single Emerald Dress Ring** rub-over set natural oval deep green emerald approx 3.48cts with twelve shoulder diamonds  
 '19 replacement \$7,950  
 \$2,000 - \$2,800
- 150**  
**9ct Single Peridot Dress Ring** rub-over round bright green peridot with ten shoulder diamonds  
 '19 replacement \$5,200  
 \$1,500 - \$2,000
- 151**  
**18ct Three Stone Emerald & Diamond Bridge Ring** modern raised four claw set oval bright green emerald 0.80cts with two oval brilliant cuts approx 0.60cts tdw  
 '19 replacement \$6,000  
 \$1,800 - \$2,500
- 152**  
**18ct 19stone Emerald & Diamond Cluster Ring** central modified native emerald cut mid-green emerald approx 1.810cts with surround of 18 round brilliant cut diamonds approx 0.826cts tdw  
 '14 replacement \$9,450  
 \$2,500 - \$3,000
- 153**  
**18ct 29stone Emerald & Diamond Cluster Ring** central rub-over natural emerald cut emerald approx 0.30cts with ribbon scroll design framed of channel set baguette cut diamonds  
 '19 replacement \$4,500  
 \$1,500 - \$2,000
- 154**  
**18ct Five Stone Emerald & Diamond Bridge Ring** central four claw set vivid green emerald approx 0.70cts with round brilliant cut shoulder diamonds  
 '17 replacement \$7,300  
 \$1,500 - \$1,800

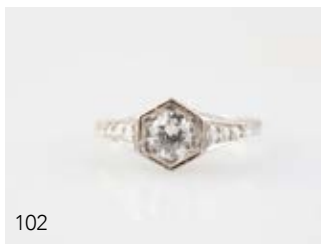




100



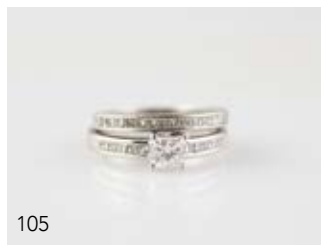
101



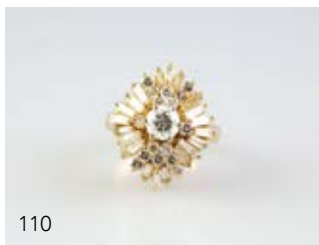
102



103



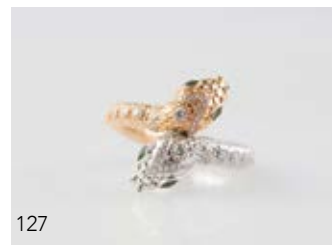
105



110



126



127



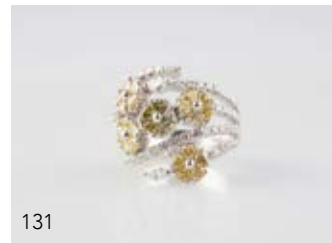
128



129



130



131



132



133



138



139



140



141



142



153



149



150



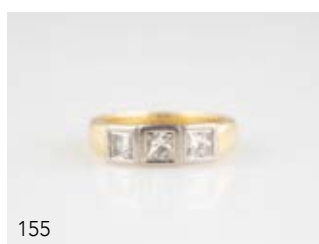
151



152



154



155



156



157



115



116



117



118



120



145



165



188



189



191



192



259



121



122



123



146



179



187



177



144



143



332



164



163



124



180



190



- 155**  
**18ct Three Stone Diamond Bridge Ring** modern box rub-over set princess cuts approx 1.04cts tdw  
 '99 replacement \$7,825  
 \$2,500 - \$3,000
- 156**  
**14ct Seven Stone Diamond Band Ring** channel set baguette cuts approx 0.50cts tdw  
 '19 replacement \$4,300  
 \$1,200 - \$1,500
- 157**  
**18ct White Gold Three Stone Diamond Bridge Ring** modern raised four claw set princess cuts approx 1cts tdw  
 '19 replacement \$7,900  
 \$2,500 - \$3,500
- 158**  
**18ct White Gold Solitaire Diamond Ring** raised six claw set round brilliant cut approx 0.50cts  
 '12 replacement \$5,900  
 with 18ct 14stone diamond curve band  
 \$2,000 - \$2,500
- 159**  
**18ct Solitaire Diamond Ring** modern rub-over set round brilliant cut approx 0.48cts  
 '19 replacement \$5,900  
 \$1,600 - \$2,000
- 160**  
**18ct Eleven Stone Red Sapphire & Diamond Cluster Ring** central oval treated bright red sapphire approx 3.34cts with surround of brilliant cuts approx 1.49cts tdw  
 '17 replacement \$19,000  
 \$5,000 - \$6,000
- 161**  
**18ct 39stone Fancy Sapphire & Diamond Cluster Ring** three oval coloured sapphires with surround of brilliant cut diamonds  
 '17 replacement \$18,000  
 \$5,000 - \$6,000
- 162**  
**18ct 31stone Ruby & Diamond Cluster Ring** central oval natural deep red ruby with eight square cut shoulder rubies and surround of baguette cut diamonds  
 '19 replacement \$5,800  
 \$2,000 - \$2,500
- 163**  
**Platinum & 18ct White Gold Art Deco Ruby & Diamond Dress Clip** circle of 21 channel set synthetic rubies with ribbon fold all pave set with diamonds approx 4.50cts tdw  
 with modern Italian .925 silver necklet chain  
 \$6,000 - \$7,000
- 164**  
**22ct Yellow Gold 100stone Synthetic Ruby & Diamond Necklace** nine graduating clusters of central ruby with channel set round brilliant cuts and pave set baguette cuts, approx 11.85cts tggw on rope twist chain  
 \$2,000 - \$3,000
- 165**  
**Silver 48stone Ruby Bracelet** hinged link of three enhanced cherry red rubies approx 45.12cts  
 '13 replacement \$5,450AU  
 \$1,400 - \$1,800
- 166**  
**18ct Solitaire Diamond Ring** central raised six claw oval brilliant cut approx 0.80cts with six square cut shoulder diamonds  
 '19 replacement \$13,900  
 \$4,500 - \$5,000
- 167**  
**18ct Three Stone Golden Topaz & Diamond Bridge** oval topaz with two side diamonds, with two 18ct curved bands each set with five diamonds  
 '17 replacement \$9,200  
 \$2,500 - \$3,000
- 168**  
**18ct Solitaire Diamond Dress Ring** central emerald cut diamond approx 1ct on floret shoulders set with single diamonds  
 '19 replacement \$17,500  
 \$5,000 - \$6,000
- 169**  
**18ct White Gold 35stone Floret Cluster Ring** modern floret design with central round brilliant cut approx 0.50cts  
 '19 replacement \$10,900  
 \$5,500 - \$6,500
- 170**  
**18ct White & Red Gold Art Deco Design Cluster Ring** central round brilliant cut approx 0.41cts with petal surround of eight Argyle pink rose diamonds, all framed with round brilliant cuts  
 '19 replacement \$10,750  
 \$5,000 - \$6,000
- 171**  
**18ct White Gold 29stone Sapphire & Diamond Ring** triple band design all channel set with princess cut diamonds, ending with two oval mid-blue sapphires approx 2.10cts, diamonds approx 0.50cts tdw  
 '19 replacement 8,000  
 \$2,000 - \$3,000
- 172**  
**14ct 15stone Diamond Cluster Ring** raised claw set marquise cluster of round brilliant cuts approx 1.65cts tdw  
 '19 replacement \$7,300  
 \$1,800 - \$2,500
- 173**  
**10ct White Gold 48stone Diamond Cluster Ring** fancy four tiered marquise cluster of round and baguette cut diamonds approx 3cts tdw  
 '19 replacement \$7,800  
 \$2,000 - \$2,500
- 174**  
**14ct Solitaire Diamond Ring** raised claw marquise cut approx 0.85cts with two marquise cut and six baguette cut shoulder diamonds  
 '19 replacement \$6,000  
 \$1,800 - \$2,500
- 175**  
**All Platinum Three Stone Diamond Bridge Ring** modern raised four claw set oval brilliant cuts approx 1cts tdw  
 '19 replacement \$6,000  
 \$1,500 - \$2,000
- 176**  
**18ct White Gold 25stone Diamond Pendant** round semi-circular pendant all pave set with diamonds on 9ct yellow gold trace link chain  
 '19 replacement \$3,850  
 \$1,400 - \$1,800
- 177**  
**Bulgari Bulgari Divas Dream Style 18ct White Gold Diamond Emerald Necklace** central emerald with ten trembling bell petals all pave set with diamonds, matching white gold chain with six emerald links  
 \$4,500 - \$5,000
- 178**  
**18ct & Platinum 41stone Diamond Ribbon Bow Pendant** all pave grain set with old European cut diamonds on 10ct chain  
 '1998 replacement \$2,850  
 \$800 - \$1,200
- 179**  
**18ct White Gold Seven Stone Diamond Bar Brooch** three split bars with central curve of individual four claw set round brilliant cut diamonds approx 0.72 tdw  
 '18 replacement \$5,869  
 \$1,500 - \$2,000
- 180**  
**Pair 18ct White Gold & Diamond Pendant Earrings** antique design articulated drops all pave set 22 diamonds each, pierced  
 '19 replacement \$5,750  
 \$2,500 - \$3,000
- 181**  
**Pair 18ct Diamond Cluster Stud Earrings** each circle pave set with eleven diamonds approx 0.20cts, pierced  
 \$1,200 - \$1,500



148



176



178



184



185



186



193



194



195



242



252



253



250



251



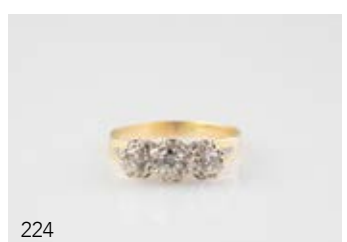
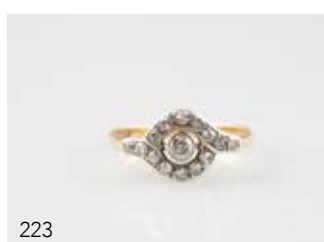
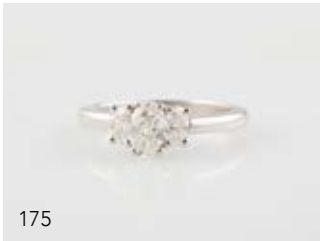
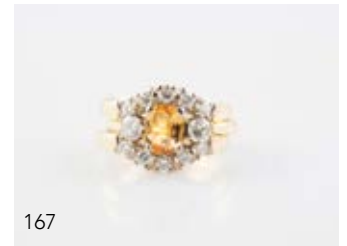
361



362

- 182**  
**Pair 18ct White Gold Diamond Hoop Earrings** each of six bead edge lozenge panels set with twelve diamonds, pierced  
\$900 - \$1,200
- 183**  
**18ct White Gold Diamond Hoop Earrings** each claw box set with five diamonds, pierced  
'20 replacement \$3,100  
\$800 - \$1,200
- 184**  
**18ct White Gold 25stone Diamond Cluster Pendant** circle cluster of central round brilliant cut, four marquise cuts, rim of brilliant cuts approx 0.36cts tdw on fine 18ct chain  
\$1,800 - \$2,200
- 185**  
**14ct White Gold 27stone Diamond Circle Pendant** central graduating row of brilliant cuts with modern raised gallery circle of diamonds approx 1.10cts tdw  
'19 replacement \$5,100  
\$1,200 - \$1,500
- 186**  
**18ct White Gold 171stone Fancy Diamond Pendant** five tiered loop design pave set with diamonds approx 3cts on 18ct white gold rope twist link chain  
'19 replacement \$8,500  
\$2,500 - \$3,000
- 187**  
**14ct White Gold 118stone Diamond Jaguar Pendant** the leaping cat all pave set with diamonds, 28 treated blue colour approx 1.50cts tdw  
'19 replacement \$4,700  
\$1,200 - \$1,500
- 188**  
**18ct 128stone Diamond Fancy Hinged Snap Bangle** four scroll design all pave set with diamonds approx 0.67cts tdw  
'19 replacement \$5,700  
\$1,400 - \$1,800
- 189**  
**18ct 68stone Diamond Bracelet** heavy curb link with each link set with four brilliant cut diamonds approx 2.04cts tdw  
\$5,000 - \$6,000
- 190**  
**Pair 14ct White Gold Cuff Links** each box set with single diamond on rectangular textured finish panel  
'18 replacement \$3,499  
\$800 - \$1,200
- 191**  
**18ct 66stone Diamond Fancy Bracelet** graduating Egyptian Key pattern panels with middle three pave set with diamonds approx 0.66cts tdw  
'10 replacement \$7,200  
\$1,800 - \$2,500
- 192**  
**14ct 48stone Diamond Tennis Bracelet** fancy two claw set round brilliant cuts interspaced with curve rail approx 2.40cts tdw  
'19 replacement \$7,500  
\$1,800 - \$2,400
- 193**  
**10ct 105stone Diamond Necklet** all diamond set three lozenge clusters on channel set baguette cuts ribbon scroll approx 2cts tdw  
'19 replacement \$5,200  
\$1,400 - \$1,800
- 194**  
**14ct White Gold 97stone Diamond Necklet** ribbon scroll links supporting five diamond floret clusters approx 0.82cts tdw  
'19 replacement \$2,700  
\$1,000 - \$1,200
- 195**  
**14ct 14stone Diamond Cross Pendant** channel set round brilliant cuts with central raised marquise brilliant cut approx 1cts tdw on fine chain  
'19 replacement \$2,400  
\$800 - \$1,000
- 196**  
**18ct Eleven Stone Diamond Cross Pendant** round brilliant cut diamonds on 18ct box link chain  
\$400 - \$600
- 197**  
**18ct 16stone Diamond Heart Pendant** pave claw set round brilliant cuts on 18ct box link chain  
\$400 - \$600
- 198**  
**All Platinum 15stone Fire Opal & Diamond Dress Ring** raised oval cabochon opal on fancy diamond set shoulders approx 0.34cts tdw  
'19 replacement \$7,600  
\$1,800 - \$2,500
- 199**  
**14ct White Gold 11stone Opal & Diamond Cluster Ring** raised claw set oval cabochon opal approx 3.50cts with frame of individual set diamonds  
'19 replacement \$6,500  
\$1,400 - \$1,800
- 200**  
**18ct 42stone Sapphire, Ruby & Diamond Dress Ring** central raised rub-over oval bright blue sapphire with shoulders of six square cut sapphires, single ruby and sides all pave set with diamonds  
'19 replacement \$6,200  
\$1,400 - \$1,800
- 201**  
**18ct 15stone Sapphire & Diamond Dress Ring** central oval deep blue sapphire on fancy and set with round brilliant cuts approx 0.22cts tdw  
'17 replacement \$4,500  
\$1,800 - \$2,000
- 202**  
**14ct White Gold 53stone Sapphire & Diamond Ring** central oval cloudy blue sapphire with pave set diamond shoulders approx 0.75cts tdw  
'19 replacement \$5,200  
\$800 - \$1,200
- 203**  
**18ct White Gold Three Stone Sapphire & Diamond Dress Ring** fancy box set central round dark blue sapphire, two old European cut diamonds, two rectangular cut sapphires to the shoulders  
'19 replacement \$5,000  
\$1,500 - \$1,800
- 204**  
**18ct White Gold 18stone Sapphire & Diamond Ring** central oval medium blue sapphire flanked by two marquise and eight round brilliant cut diamonds approx 0.50cts tdw  
'19 replacement \$5,100  
\$1,500 - \$1,800
- 205**  
**18ct White Gold 49stone Amethyst & Diamond Cluster Ring** central rectangular amethyst approx 4.80cts with diamond surround  
'19 replacement \$4,900  
\$1,000 - \$1,300
- 206**  
**18ct White Gold Single Stone Ruby Dress Ring** raised four claw set round dark red ruby with diamond set gallery and baguette cut channel set shoulders  
'19 replacement \$4,800  
\$900 - \$1,200
- 207**  
**18ct White Gold 49stone Ruby & Diamond Dress Ring** central oval ruby with six shoulder rubies all surrounded with diamonds approx 0.75cts tdw  
'19 replacement \$5,700  
\$1,400 - \$1,800
- 208**  
**14ct Solitaire Diamond Ring** raised six claw set round brilliant cut with four princess cut shoulder diamonds approx 1.10ct tdw  
'19 replacement \$5,600  
\$1,500 - \$2,000
- 209**  
**18ct White Gold Solitaire Diamond Ring** cross-over set round brilliant cut approx 0.53cts  
'19 replacement \$6,400  
\$1,500 - \$2,000





- 210**  
**All Platinum Solitaire Diamond Ring** raised six claw set round brilliant cut approx 0.90cts with stepped shoulders set with 16 diamonds '19 replacement \$6,200 \$2,500 - \$3,000
- 211**  
**14ct 12stone Diamond Floret Cluster Ring** all individual claw set round brilliant cut diamonds approx 0.80cts tdw '19 replacement \$5,000 \$1,400 - \$1,800
- 212**  
**All Platinum Solitaire Diamond Ring** four claw round brilliant cut on fancy platform and gallery, single shoulder diamonds approx 0.67cts tdw '19 replacement \$5,000 \$1,800 - \$2,200
- 213**  
**All Platinum Solitaire Diamond Ring** raised box setting old European cut approx 0.53cts '19 replacement \$5,100 \$1,800 - \$2,200
- 214**  
**All Platinum Solitaire Diamond Ring** modern raised claw marquise cut approx 0.50cts '19 replacement \$4,800 \$1,000 - \$1,400
- 215**  
**Pair 18ct White Gold Pendant Earrings** each of large and small oval loops half pave set with 44 round brilliant cut diamonds approx 1cts tdw, pierced \$1,500 - \$1,800
- 216**  
**Pair 10ct Diamond Earrings** each of curved rectangular panel channel set with six row of five single cut diamonds '19 replacement \$3,500 \$800 - \$1,000
- 217**  
**Pair 18ct Diamond Hoop Earrings** each hoop with rope edged half pave set with 11 diamonds '19 replacement \$3,500 \$1,000 - \$1,200
- 218**  
**9ct Sapphire & White Crystal Spray Earrings** each all individually set three mid-blue oval sapphires with curve of three crystals, screw backs '18 replacement \$695 \$150 - \$250
- 219**  
**Pair 18ct Sapphire & Diamond Cluster Earrings** each with central oval Ceylonese bright blue sapphire with ten diamond surround, pierced '19 replacement \$950 \$300 - \$500
- 220**  
**18ct Eleven Stone Sapphire & Diamond Cluster Ring** claw set star-burst design with central sapphire \$800 - \$1,200
- 221**  
**18ct Eleven Stone Emerald & Diamond Cluster Ring** central rectangular emerald cut emerald with diamond surround \$500 - \$700
- 222**  
**14ct 19stone Emerald & Diamond Ring** central oval natural emerald with cross-over shoulders diamond set '19 replacement \$1,990 \$400 - \$600
- 223**  
**18ct 15stone Diamond Cluster Ring** central old European cut diamond with cross-over shoulders diamond set '20 replacement \$3,600 \$800 - \$1,200
- 224**  
**18ct Three Stone Diamond Bridge Ring** raised gallery illusion set round brilliant cut diamonds approx 0.595cts tdw '19 replacement \$5,095 \$1,000 - \$1,500
- 225**  
**18ct & Palladium Solitaire Diamond Ring** raised claw illusion set round brilliant cut approx 0.25cts with five stone diamond curve band \$800 - \$1,200
- 226**  
**14ct & 18ct Three Stone Diamond Two Ring Set** modern design of circular panel set with three diamonds and fitted wide 18ct wedding band \$1,200 - \$1,400
- 227**  
**18ct Seven Stone Diamond Band** channel set round brilliant cuts approx 1cts tdw '19 replacement \$5,000 \$600 - \$1,000
- 228**  
**Single Strand Autore South Sea Pearl Necklace** 25 16mm lustrous gold and cream/white pearl with 18ct ball clasp 43cm length, original box '20 replacement \$40,000 \$22,000 - \$25,000
- 229**  
**Single Strand Tahitian Pearl Necklace** 32 13mm mixed colour of silver grey to blue grey uniform pearls on silver ball clasp 47cm length \$3,600 - \$4,000
- 230**  
**Single Strand Pearl Necklace** 50 12mm slightly barque fresh water pearls on 18ct bolt ring clasp '20 replacement \$3,200 \$800 - \$1,200
- 231**  
**18ct Cultured Pearl, Ruby, Emerald & Sapphire Cuff Bangle** six rows of Akoya pearls interspaced with gold beads, oval cabochon three rubies, three sapphires and three emeralds with matching hoop earrings each of two hoops interspaced with gold beads, ruby, sapphire and emerald '20 replacement \$15,000 bangle, \$5,500 earrings \$5,000 - \$8,000
- 232**  
**18ct Mabe Pearl & Sapphire Pendant Earrings** each of single rub-over set large pearl on bar and head set with cabochon sapphire in the antique Roman manner '20 replacement \$9,500 \$1,700 - \$2,400
- 233**  
**Pair 14ct South Sea Pearl Pendant Earrings** each of single 12mm pearl drop on triple scroll head set with single small ruby, pierced '20 replacement \$3,700 \$1,000 - \$1,400
- 234**  
**Pair Cultured Pearl & Diamond Earrings** each of single 8.5mm pearl and four claw set round brilliant cut approx 0.16cts, pierced '20 replacement \$4,800 \$1,000 - \$1,500
- 235**  
**Pair Platinum Pearl & Diamond Pendant Earrings** each of single large South Sea baroque pearl tiered mount with five stone diamond hanger and cluster head all diamond set '19 replacement \$5,800 \$1,500 - \$2,000
- 236**  
**18ct White Gold Single Pearl & Diamond Cluster Ring** central pearl on fine wire basket platform with 16 round brilliant diamond surround approx 0.70cts tdw '19 replacement \$6,900 \$1,800 - \$2,400
- 237**  
**Early C20th Platinum Three Pearl & Diamond Cluster Ring** three central cultured pearls with bead rub-over set old mixed cut diamond surround '19 replacement \$1,800 \$400 - \$600



229



228



239



240



231



235



238



232



233



234



236



243



248

- 238**  
**Pair (22ct) Gold Filigree Pearl & Diamond Pendant Earrings** each of suspended with brilliant cut diamond, cultured pearl, filigree ball and 8mm slightly baroque pearl  
\$600 - \$1,000
- 239**  
**Two Matching Single Strand Cultured Pearl Necklaces** each of 68 uniform 6mm pearls with 9ct ball clasp 47cm length  
\$800 - \$1,200
- 240**  
**Single Strand Cultured Pearl Necklace**  
uniform 118 6mm pearls with 18ct sculptured clasp 83cm length  
\$800 - \$1,200
- 241**  
**Single Strand Cultured Pearl Necklace**  
uniform 81 7mm pearls on s/s clasp 63cm length  
\$300 - \$400
- 242**  
**14ct Single South Sea Pearl & Diamond Pendant** approx 9.78mm grey pearl mounted with round brilliant cut diamond on 14ct fine chain  
'19 replacement \$2,200  
\$600 - \$800
- 243**  
**Pair 18ct Diamond and Black Pearl Pendant Earrings** each of single South Sea pearl 9.5mm pendant on channel set diamond heart frame head approx 0.50cts tdw, pierced  
'19 replacement \$7,000  
\$1,800 - \$2,500
- 244**  
**Pair 14ct Pearl & Ruby Earrings** each of four petal flower head design set with single cultured pearl and four small rubies, clip back  
\$800 - \$1,000
- 245**  
**18ct Mikimoto Single Cultured Pearl and Diamond Pendant** the 8mm pearl on suspender set with four diamonds on fine 18ct chain, boxed  
\$300 - \$500
- 246**  
**Edwardian 9ct Eleven Stone Pearl & Diamond Floret Cluster Bar Brooch** claw set old European cut diamonds, boxed  
\$200 - \$400
- 247**  
**Edwardian 15ct Sapphire & Pearl Pendant** circlet pendant of six sapphires interspaced with half pearls with near matching bar brooch with circle of four sapphires and half pearls, both boxed  
'07 replacement \$1,750 and \$1,650  
\$800 - \$1,200
- 248**  
**14ct Enamel & Gem Set Bug Brooch** blue enamel and diamond wings with pearl body, ruby and emerald eyes  
\$600 - \$800
- 249**  
**14ct Five Cultured Pearl Spray Brooch**  
uniform 7mm pearls  
\$400 - \$600
- 250**  
**German 14ct Lapis Lazuli Neck Chain** ten lapis circular discs on rail link chain, 96cm length  
'14 replacement \$11,690  
\$2,500 - \$4,000
- 251**  
**22ct on Wax Bead Necklace** large and small ribbed circular beads 49cm length  
\$1,200 - \$1,400
- 252**  
**9ct Multi-Trace Link Neck Chain** 45cm length  
\$1,500 - \$2,000
- 253**  
**9ct Rail Link Albert Chain** 39cm length  
\$600 - \$1,000
- 254**  
**18ct Snake Link Neck Chain** 43cm length  
\$400 - \$600
- 255**  
**9ct Trace Link Neck Chain** (bolt ring not gold) 71cm length  
\$300 - \$500
- 256**  
**18ct Wide Hinged Fancy Link Bracelet** all hinged three link wide set with nine garnets  
\$2,000 - \$3,000
- 257**  
**18ct Triple 'Bamboo' Rail Link Bracelet**  
textured bright cut finish  
\$1,600 - \$2,000
- 258**  
**14ct Yellow & White Gold Fancy Bracelet**  
three links wide of central white gold domes, edged with yellow gold domes  
\$700 - \$1,000
- 259**  
**14ct 51stone Diamond Bracelet** multi-raised tiered design of 17 rows each set with three round brilliant cut diamonds on strap bracelet  
\$1,500 - \$2,000
- 260**  
**Victorian 15ct Curb Link Bracelet** with heart padlock clasp  
\$800 - \$1,200
- 261**  
**Modern 9ct Heavy Trace Link Bracelet**  
heart padlock clasp  
'18 replacement \$4,900  
\$1,000 - \$1,400
- 262**  
**9ct Multi-Trace Curb Link Bracelet**  
\$500 - \$800
- 263**  
**18ct Bangle** lozenge notch cut panel with textured finish  
\$1,000 - \$1,200
- 264**  
**Pair 9ct Dome Earrings** plain domes with twist frame, pierced  
\$200 - \$400
- 265**  
**14ct White Gold Solitaire Diamond Ring**  
raised four claw set round brilliant cut approx 0.50cts with four shoulder diamonds  
'19 replacement \$4,000  
\$1,000 - \$1,400
- 266**  
**14ct White Gold 10stone Diamond Band**  
channel set round brilliant cuts approx 0.50cts  
'19 replacement \$3,400  
\$800 - \$1,200
- 267**  
**Platinum & 18ct White 20stone Diamond Eternity Band** continuously box set with brilliant cuts approx 0.50cts tdw  
\$1,200 - \$1,500
- 268**  
**All Platinum 33stone Sapphire & Diamond Cluster Ring** raised oval mid-blue sapphire with surround of baguette and round brilliant cut diamonds approx 0.39cts tdw  
'19 replacement \$4,200  
\$1,200 - \$1,500
- 269**  
**14ct 42stone Sapphire & Diamond Cluster Ring** raised central marquise cut mid blue sapphire on triple shoulder design channel set with baguette cut diamonds approx 1cts tdw  
'19 replacement \$5,000  
\$800 - \$1,200
- 270**  
**18ct White Gold Ten Stone Diamond Band Ring** channel set princess cut diamonds approx 0.50cts tdw  
'19 replacement \$4,100  
\$1,000 - \$1,400
- 271**  
**9ct 16stone Diamond Cluster Ring** central lozenge cluster of individual claw set round brilliant cuts  
'14 replacement \$3,500  
\$800 - \$1,200





256



257



258



260



261



262



313



314



263



315



316



317



330



331



334



247



337



249

- 272**  
**18ct Yellow & White Gold Solitaire Diamond Ring** rub-over set round brilliant cut approx 0.25cts  
\$500 - \$800
- 273**  
**All Platinum Solitaire Diamond Ring** raised four claw set princess cut approx 0.31cts  
'19 replacement \$4,300  
\$1,200 - \$1,500
- 274**  
**18ct White Gold Solitaire Diamond Ring** modern raised four claw set princess cut approx 0.84ct on fancy diamond set gallery and shoulders  
'19 replacement \$4,700  
\$1,800 - \$2,000
- 275**  
**14ct White Solitaire Diamond Ring** raised platform round brilliant cut approx 0.30cts with four shoulder diamonds, with joined double row set 14 single cut diamond band  
\$1,000 - \$1,400
- 276**  
**14ct Seven Stone Emerald & Diamond Bridge Ring** central four claw set oval light green emerald with round brilliant cut shoulder diamonds  
'19 replacement \$3,000  
\$1,000 - \$1,200
- 277**  
**14ct 14stone Emerald & Diamond Cluster Ring** raised cage claw set marquise cut light green emeralds and brilliant cut diamonds  
'19 replacement \$3,100  
\$800 - \$1,000
- 278**  
**14ct White Gold 61stone Sapphire & Diamond Cluster Ring** raised oval mid-blue sapphire with pave surround and shoulders of brilliant cuts approx 0.50cts tdw  
'19 replacement \$3,900  
\$800 - \$1,200
- 279**  
**18ct White Gold Three Stone Pink Sapphire & Diamond Bridge Ring** raised claw set  
'19 replacement \$2,000  
\$800 - \$1,000
- 280**  
**Pair 14ct Diamond Hoop Earrings** each of central panel of nine baguette cut diamonds with surround of 24 brilliant cuts  
'19 replacement \$2,700  
\$1,000 - \$1,200
- 281**  
**14ct White Gold 19stone Diamond Cluster Band** three stepped rows bead claw set round brilliant cut diamonds  
\$400 - \$800
- 282**  
**9ct White Gold 61stone Diamond Band** wide key-pattern type design all pave set in box groups  
\$300 - \$500
- 283**  
**18ct White Gold Solitaire Diamond Ring** raised scroll claw set round brilliant cut approx 0.36cts  
'19 replacement \$3,750  
\$500 - \$1,000
- 284**  
**18ct Eleven Stone Diamond Cluster Ring** raised cage floret cluster approx 0.30cts tdw  
'19 replacement \$4,150  
\$500 - \$800
- 285**  
**18ct Nine Stone Diamond Floret Cluster Ring** raised cage individual set round brilliant cuts  
\$600 - \$800
- 286**  
**18ct 13stone Ruby & Diamond Cluster Ring** central oval natural ruby with diamond surround  
'19 replacement \$2,390  
\$500 - \$700
- 287**  
**Victorian 18ct Three Stone Imitation Ruby Bridge Ring** three garnet topped doublet in traditional London Bridge design interspaced with four diamond chips  
'19 replacement \$1,890  
\$400 - \$600
- 288**  
**Victorian 18ct Three Stone Imitation Emerald Bridge Ring** traditional London Bridge interspaced with diamond chips  
\$300 - \$400
- 289**  
**18ct Single Cabochon Ruby Band Ring** rub-over oval gem on plain band  
\$300 - \$500
- 290**  
**18ct Five Stone Emerald Band Ring** triangular mixed cut emeralds each headed with single diamond  
\$300 - \$500
- 291**  
**9ct Solitaire Diamond Ring** plain rub-over set round brilliant cut approx 0.20cts  
\$300 - \$400
- 292**  
**18ct & Platinum Three Stone Diamond Bridge Ring** crown claw set  
\$300 - \$400
- 293**  
**9ct 14stone Sapphire & Diamond Cluster Ring** modern design with two central round cut sapphire, diamonds individually set with scroll shoulder  
\$300 - \$400
- 294**  
**18ct Three Stone Cabochon Sapphire & Diamond Band Ring** plain rub-over set  
\$300 - \$400
- 295**  
**9ct Single Cabochon Sapphire Band Ring** rub-over set gem on four yellow & white gold ribbed band  
\$300 - \$400
- 296**  
**14ct Nine Stone Ruby & Diamond Floret Cluster Ring** raised gallery setting with knot twist shoulders  
\$200 - \$400
- 297**  
**Victorian 18ct Three Stone Turquoise Bridge Ring** traditional London bridge setting interspaced with six old cut diamonds  
\$800 - \$1,000
- 298**  
**14ct Single Turquoise Dress Ring** oval turquoise approx 4.85cts raised on fancy beaded gallery  
'19 replacement \$3,450  
\$500 - \$800
- 299**  
**9ct Single Smokey Quartz Dress Ring** octagonal step cut gem approx 45.65cts raised on triple leaf panel gallery  
'19 replacement \$2,980  
\$800 - \$1,200
- 300**  
**14ct Single Citrine Dress Ring** large oval mixed cut gem raised on four claw gallery  
\$500 - \$800
- 301**  
**14ct Gents Single Smokey Quartz Dress Ring** square emerald cut gem approx 9.70cts on fancy sculptured shoulders  
\$600 - \$800
- 302**  
**18ct Gents Solitaire Diamond Dress Ring** rectangular panel set with round brilliant cut diamond approx 0.25cts  
\$1,000 - \$1,400
- 303**  
**18ct Single Cabochon Ruby Dress Ring** rub-over set gem on wide heavy band with triple cylinder shoulders and rope twist edging  
'20 replacement \$7,300  
\$1,600 - \$2,000



114



125



181



182



215



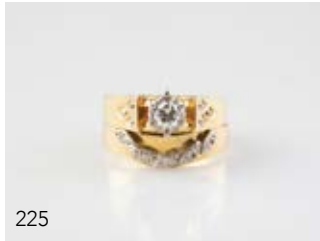
216



217



244



225



226



227



265



267



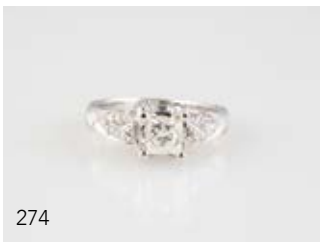
268



269



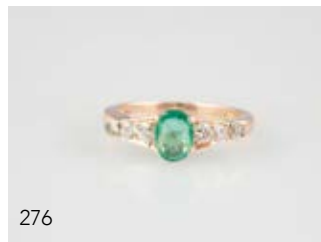
270



274



275



276



278



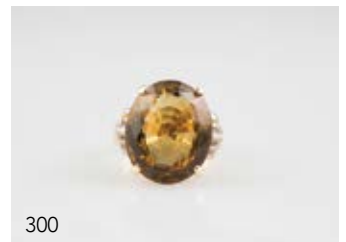
297



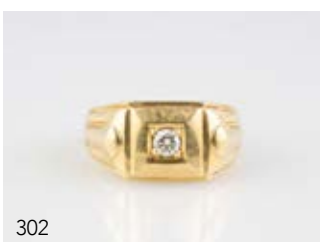
298



299



300



302



303



304



305

- 304**  
**14ct Single Stone Sapphire Gents Dress Ring** four claw set oval mixed cut dark blue sapphire approx 4.59cts with four shoulder diamonds  
 '20 replacement \$4,300  
 \$800 - 1,200
- 305**  
**18ct Three Stone Sapphire & Emerald Band Ring** wide band rub-over set with central oval mid-blue sapphire flanked by emeralds  
 '20 replacement \$7,250  
 \$2,500 - \$3,000
- 306**  
**14ct Single Citrine Gents Dress Ring** rub-over oval mixed cut gem approx 5.50cts on half textured finish shoulders  
 \$400 - \$600
- 307**  
**9ct Gents Single Greenstone Panel Ring** plain rectangular panel with rub-over side edges  
 \$100 - \$200
- 308**  
**9ct Gents Single Greenstone Panel Ring** plain square panel rub-over set  
 \$100 - \$200
- 309**  
**S/S Single Sapphire Gents Dress Ring** together with gold metal classical portrait head ring  
 \$50 - \$100
- 310**  
**18ct Sapphire Band Ring** central oval cabochon sapphire with four shoulder sapphires together with matching five sapphire chain linked bracelet  
 \$500 - \$700
- 311**  
**18ct 15stone Sapphire & Diamond Cluster Ring** with 14ct sapphire & diamond linked bracelet of six blue/green sapphires and seven single cut diamonds  
 \$600 - \$800
- 312**  
**14ct Single Garnet Ring and Pendant** plain four claw set ring with matching pendant on 14ct mixed curb link chain  
 \$400 - \$600
- 313**  
**14ct 50stone Diamond Tennis Type Bracelet** round brilliant cut diamonds individually set with scroll hoop rail design  
 '19 replacement \$3,500  
 \$1,000 - \$1,400
- 314**  
**14ct 32stone Diamond Bracelet** central rail of four rectangular step cut diamonds with lozenge frame of round cuts approx 1.06cts tdw  
 '19 replacement \$4,900  
 \$1,600 - \$2,000
- 315**  
**14ct Five Stone Ruby & Diamond Hinged Snap Bangle** five fancy roundels each set with gem  
 '19 replacement \$2,200  
 \$600 - \$800
- 316**  
**9ct Fancy Hinged Snap Bangle** set with three gems half textured finish with applied scrolls and rope edging  
 \$400 - \$600
- 317**  
**Late Vict Five Stone Ruby & Diamond Hinged Snap Bangle** plain panel with gypsy set gems  
 \$500 - \$600
- 318**  
**9ct Half Engraved Hinged Snap Bangle**  
 \$300 - \$400
- 319**  
**18ct Modern Flat Curb Link Bracelet**  
 \$800 - \$1,000
- 320**  
**14ct Tri-colour Gold Fancy Rail Link Bracelet**  
 \$200 - \$400
- 321**  
**9ct Mixed Curb Link Bracelet**  
 \$200 - \$400
- 322**  
**14ct Chinese Panel Pendant on 14ct Neck Chain** flat mixed curb link chain  
 \$500 - \$600
- 323**  
**18ct Scroll Twist Link Neck Chain**  
 \$250 - \$400
- 324**  
**9ct Rope Twist Link Neck Chain**  
 \$250 - \$350
- 325**  
**9ct Modern Flat Curb Link Neck Chain** with vintage 9ct watch attached  
 \$200 - \$300
- 326**  
**Three Modern Flat Curb Link Neck Chains** 14ct x2, 10ct (faults)  
 \$200 - \$400
- 327**  
**14ct Fancy Panel and Bead Link Neck Chain** with eight agate beads interspaced  
 \$100 - \$200
- 328**  
**All Platinum 13stone Emerald & Diamond Pendant** central rectangular medium green emerald with diamond surround on box link platinum chain  
 '19 replacement \$3,200  
 \$800 - \$1,000
- 329**  
**18ct Single Amethyst & Diamond Pendant** square cut amethyst with surround and hanger pave set with 24 diamonds on fine curb link chain  
 '19 replacement \$2,200  
 \$600 - \$800
- 330**  
**14ct Seven Stone Diamond Fancy Circle Pendant** claw set rose cut diamonds approx 0.85cts tdw  
 '19 replacement \$3,600  
 \$1,000 - \$1,200
- 331**  
**14ct 13stone Diamond Heart Pendant** native cut diamonds all individually set 'Tiffany' claw florets approx 1.55cts tdw  
 '19 replacement \$5,500  
 \$1,400 - \$1,800
- 332**  
**14ct White Gold Five Stone Diamond Filigree Brooch** central individual set round brilliant cut diamonds on fine rectangular filigree frame with green and blue enamel banding  
 '19 replacement \$4,000  
 \$1,200 - \$1,500
- 333**  
**14ct White Gold Single Diamond Filigree Bar Brooch** central round brilliant cut  
 '19 replacement \$2,000  
 \$400 - \$600
- 334**  
**Victorian 15ct Single Milk Opal Brooch/Pendant** large oval cabochon gem claw set on floral frame set with half pearls  
 \$600 - \$1,000
- 335**  
**Pair 9ct Black Opal Cuff-Links** rub-over opal cabochon opals with plain oval panel backs  
 \$300 - \$500
- 336**  
**Pair 14ct Malachite Cufflinks** rectangular panels with gold end-caps and mounts  
 '19 replacement \$2,900  
 \$600 - \$800
- 337**  
**14ct 39stone Turquoise Peacock Brooch** body all gold mounted with rub-over set turquoise, single ruby eye  
 \$1,000 - \$1,500



- 338**  
**Victorian 15ct Gilt Turquoise & Pearl Target Brooch** central dome of pave set turquoise with star burst frame studded with five half pearls  
\$400 - \$600
- 339**  
**Georgian Gold Memorial Portrait Pendant** painted oval ivory panel with frame of pave set half pearls on 9ct trace link chain mounted with pearls  
\$600 - \$800
- 340**  
**Edwardian 9ct Pearl & Amethyst Shield Pendant** central oval amethyst with amethyst pear drop on modern 14ct curb link chain  
\$300 - \$500
- 341**  
**Edwardian 9ct Pearl & Spinel Shield Pendant** three pink spinels on modern 9ct trace link chain  
\$200 - \$400
- 342**  
**Edwardian 9ct Pearl & Topaz Circlet Pendant** two pear mixed cut topaz on 9ct trace link chain  
\$200 - \$400
- 343**  
**Edwardian 9ct Pearl & Topaz Circlet Pendant** two round mixed cut topaz on 9ct rail & trace link chain  
\$200 - \$400
- 344**  
**Edwardian 18ct Necklet** central lyre suspender with floret chain all set with half pearls on 15ct rope twist chain  
\$300 - \$500
- 345**  
**Edwardian 9ct Pearl & Amethyst Necklet** single cultured pearl drop on seed pearl bars ending with amethyst on trace link chain  
\$150 - \$250
- 346**  
**Late Victorian 9ct Trace Link Muff Chain** 160cm  
\$600 - \$800
- 347**  
**Edwardian 15ct Floral Crescent Brooch** all pave set with seed and half pearls  
\$150 - \$300
- 348**  
**Victorian Silver Gilt Target Brooch** set with three cabochon garnets together with silver gilt photo locket
- 349**  
**9ct Framed Portrait Cameo Brooch**  
\$200 - \$300
- 350**  
**Large 9ct Framed Portrait Cameo Brooch**  
\$200 - \$300
- 351**  
**9ct Framed Portrait Cameo Brooch**  
\$150 - \$250
- 352**  
**9ct Framed Portrait Cameo Brooch**  
\$150 - \$250
- 353**  
**15ct Single Citrine Bar Brooch** raised claw set oval mixed cut on triple rail shoulders  
\$400 - \$500
- 354**  
**European .900 Silver Pearl Art Nouveau Brooch** mabe pearl with scrolling frame  
\$150 - \$250
- 355**  
**9ct Fine Neck Chain** with seven red coral beads mounted  
\$100 - \$200
- 356**  
**Single Strand Red Coral Bead Necklace**  
\$100 - \$200
- 357**  
**Two Pearl Necklaces** graduated cultured pearl with 9ct clasp and fresh water pearl & bead necklace with 14ct clasp  
\$100 - \$200
- 358**  
**Uniform Single Strand Cultured Pearl Necklace** 14ct clasp  
\$150 - \$300
- 359**  
**Single Strand Graduated Facet Amber Bead Necklace**  
\$100 - \$200
- 360**  
**Vintage Probable Mexican Silver Bead Necklace** single strand slightly graduated bead with fringe bead and turquoise set pendant  
\$150 - \$300
- 361**  
**Modern Design 8ct & .925 Pendant on Choker** sculptural disc pendant with blue & red enamels, single rub-over set diamond  
\$300 - \$500
- 362**  
**18ct Modern Design Neck Coller** linked shaped rectangular panels set with single green enamel disc  
\$2,000 - \$3,000
- 363**  
**C1960's Egyptian Style Necklace** gilt metal link necklace fringed with faience scarab beads  
\$50 - \$100
- 364**  
**Five Carved Ivory Bangles**  
\$50 - \$100
- 365**  
**14ct Single Sapphire Dress Ring** modern four claw raised emerald cut deep blue sapphire with twelve shoulder diamonds  
'19 replacement \$2,000  
\$400 - \$600
- 366**  
**9ct 19stone Opal, Sapphire & Diamond Cluster Ring** raised cage claw set central oval milk opal with petal surround  
'19 replacement \$1,200  
\$300 - \$400
- 367**  
**18ct White Gold Solitaire Diamond Band** round brilliant cut gypsy set  
\$400 - \$600
- 368**  
**18ct White Gold Plain Wide Wedding Band**  
\$300 - \$400
- 369**  
**Two 22ct Plain Wedding Bands**  
\$400 - \$600
- 370**  
**18ct Plain Wedding Band**  
\$200 - \$300
- 371**  
**14ct Yellow & White Gold Band Ring** set with seven single cut diamonds  
\$200 - \$300
- 372**  
**18ct Solitaire Diamond Band** round brilliant cut tension set on split band  
\$300 - \$500
- 373**  
**18ct Jade Ring** carved apple green jade toad on fancy band  
\$200 - \$300
- 374**  
**14ct Three Stone Ruby & Diamond Bridge Ring** modern claw set  
\$200 - \$400
- 375**  
**18ct Ruby & Diamond Ring** oval ruby, diamonds missing and other ring  
\$200 - \$300
- 376**  
**18ct Three Stone Amethyst & Diamond Ring** raised claw set  
\$200 - \$300
- 377**  
**9ct Single Amethyst Ring** raised claw set  
\$100 - \$200

- 378**  
**9ct Single Milk Opal Ring** raised claw set  
\$100 - \$200
- 379**  
**9ct Single Topaz Ring** round mixed cut claw set (stone needs re-polishing)  
\$100 - \$200
- 380**  
**14ct Single Emerald Ring** square emerald cut  
\$150 - \$300
- 381**  
**9ct Single Moonstone Ring** rub-over set  
\$100 - \$200
- 382**  
**9ct Tri-colour Gold Russian Wedding Band** with 9ct all engraved square photo locket  
\$150 - \$250
- 383**  
**9ct Tri-colour Gold Russian Wedding Band**  
\$100 - \$200
- 384**  
**Brazilian Triangular Cut Citrine**  
53.06cts  
\$100 - \$200
- 385**  
**Large Unmounted Aquamarine** rectangular mixed cut  
\$200 - \$400
- 386**  
**Unmounted Green Tourmaline** emerald cut  
\$100 - \$200
- 387**  
**Collection Unmounted Amethyst Gems (8)**  
\$100 - \$300
- 388**  
**Unmounted Cubic Zirconia 12stone Colourline**  
\$100 - \$300
- 389**  
**Unmounted Ruby & Natural Rough Cut Rubies**  
\$100 - \$200
- 390**  
**Collection Unmounted Gemstones**  
\$200 - \$400
- 391**  
**Collection Unmounted Gemstones**  
\$100 - \$200
- 392**  
**Collection Unmounted Gemstones**  
\$100 - \$200
- 393**  
**Collection Unmounted Gemstones**  
\$100 - \$200
- 394**  
**Collection Unmounted Gemstones**  
\$100 - \$200
- 395**  
**Collection Unmounted Gemstones**  
\$100 - \$200
- 396**  
**Collection Unmounted Gemstones**  
\$100 - \$200
- 397**  
**9ct Art Nouveau Single Peridot Bar Brooch** with 15ct bar brooch and Victorian gold pin brooch  
\$150 - \$250
- 398**  
**Vict Gilt Metal Mosaic Sword Brooch** with greenstone bar brooch and turquoise cluster brooch  
\$100 - \$200
- 399**  
**Two Pair 9ct Plain Dome Stud Earrings** screw backs  
\$100 - \$200
- 400**  
**Victorian 15ct Three Stone Ruby and Diamond Band Ring** gypsy set old cushion cut diamond (chip) with deep red rubies  
\$200 - \$400
- 401**  
**9ct Three stone Ruby Bar Brooch**  
\$150 - \$300
- 402**  
**9ct Hinged Snap Bangle** double heart head set with sapphire and diamond  
\$200 - \$300
- 403**  
**9ct Sapphire & Diamond Bridge Ring** with eternity band and two heart signet rings  
\$150 - \$250
- 404**  
**9ct Sapphire & Diamond Dress Ring** with eternity band, cultured pearl ring and wedding band  
\$150 - \$250
- 405**  
**15ct Southern Cross Brooch** together with 9ct Australia Southern Cross brooch, 9ct curb link bracelet and panel brooch  
\$150 - \$250
- 406**  
**Single Strand Cultured Pearl Necklace** with pearl cluster earrings and small qty loose gem stones  
\$100 - \$150
- 407**  
**14ct Two Cultured Pearl Ring** set with two side rubies together with imitation pearl necklace and earrings  
\$100 - \$150
- 408**  
**9ct Cultured Pearl Bar Brooch** with 9ct single pearl earrings and s/s cluster pearl earrings, screw backs  
\$100 - \$200
- 409**  
**Masonic Jewellery** of 9ct Cross/Ball Fob (fault), 9ct ring and cufflinks and watch  
\$150 - \$300
- 410**  
**Vintage German S/S & Marcasite Jewellery** large flower brooch, pin, three brooches and pair earrings  
\$100 - \$250
- 411**  
**.925 Peruvian Silver Wide Wrist Cuff** of six hinged panels with silver turquoise bangle  
\$100 - \$150
- 412**  
**Silver Amethyst Pendant** with two .925 silver brooches  
\$100 - \$200
- 413**  
**S/S & Amber Pendant** greenstone pendant and two rings  
\$100 - \$150
- 414**  
**S/S Half Engraved Snap Bangle** with cubic zirconia band ring and channel set ring  
\$50 - \$100
- 415**  
**Two Vict S/S Target Brooches** 1837-1887 Jubilee brooch, target panel and heart bar brooch  
\$75 - \$120
- 416**  
**9ct Shield Fob** with various jewellery, fern and kiwi pins  
\$75 - \$150
- 417**  
**Victorian S/S Photo Locket** with greenstone heart pendant, ivory bangle and various  
\$100 - \$150
- 418**  
**9ct Cameo Ring** with amethyst stickpin, locket, neckchain and plated cameo brooch & earrings  
\$100 - \$200
- 419**  
**Carved Ivory & Bone Jewellery** two pair earrings and three brooches  
\$40 - \$80

**420**

**Two S/S Sovereign Cases and Vesta**

\$100 - \$200

**421**

**Elgin .925 Hunter Cased Lever Wind**

**Pocket Watch** on s/s curb link Albert Chain

\$100 - \$200

**422**

**Two Rotherhams S/S Hunter Cased Pocket**

**Watches** one with s/s Albert chain attached

\$100 - \$200

**0423**

**.800 Open Face Key Small Pocket Watch**

on s/plate Albert chain with various fobs

\$100 - \$150

**0424**

**Three S/S Cased Lever & Key Wind Pocket**

**Watches**

\$150 - \$300

**0425**

**Three Various Plated Pocket Watches** with

plated muff chain and various

\$50 - \$100







**Session Two**  
**Pottery & Porcelain**  
**Glass**  
**Asian Arts**  
**Woods & Metals**

**Wednesday 20 May- 10am start**

**Lot 450 - 662**

## PORCELAIN & POTTERY

450

**Large Pair Late Victorian Staffordshire Mantel Dogs** black colourway

451

**Royal Doulton Toilet Wash Basin** D2224 Ships Series ware C1905 (rim hairline crack)

452

**Imperial Amphora Flower Trough** figured with duck goose girl and two geese

453

**Imperial Amphora Handled Vase** traditional incised line decoration of crows

454

**Royal Doulton Stoneware Vase** traditional decoration of painted blossom on textured ground

455

**Royal Doulton Stoneware Ewer** tapered cylindrical fine ribbed body with pewter cover having sporting inscription, Windermere 1907

456

**Royal Doulton Flambe Vase** continuous cottage decoration 26cm \$300 - \$600

457

**Bing & Grondahl Ovoid Vase** painted with single rose blossom

458

**Doulton Burslem Teapot and Jug** painted in blue with botanicals and gilt enrichments

459

**Royal Doulton Willow Pattern Fruit Bowl** with Minton willow pattern vase (rim chip) and Doulton stoneware specimen vase

460

**C18th/19th Dutch Delft Vase & Cover** with delft figured wall scone (both with faults) together with Wedgwood blue jasperware jug

461

**Three Victorian Stoneware Ashets**

462

**Doulton Watteau B&W Pattern Dinner Ware** large & two small ashets, three plates, two tureens, one with cover, ladle and sauce tureen

463

**C19th Davenport B&W Plate** with serving dish, Doulton butter dish & stand and Victorian ashset

464

**Early/Mid C19th Staffordshire Ashet** printed b&w Herculaneum pattern 52cm length \$200 - \$400

465

**Royal Crown Derby St George Pattern Dinner Ware** white with gold borders, plates, tea and coffee ware (72pces) \$300 - \$600

466

**Mid C19th Staffordshire 19pce Dessert Service** pattern #1508 pattern with varying landscapes with apple green borders

467

**Pair Mid C19th Staffordshire Figures** cobbler and his companion

468

**1970 Goebel Gnome Co-Boy Figure** Well 507 'Wim The Court Supplier'

469

**Royal Doulton Titanian Coffee Can & Saucer** painted with bird of paradise

470

**Royal Doulton Medium Character Jug** Arriet with rare blue coat colourway

471

**Pair Royal Doulton Balloon Seller Figures** The Balloon Man HN1954 and The Balloon Seller HN1315

472

**Nine Royal Doulton Head Rack Plates** Portrait series The Parson, The Jester etc \$300 - \$600

473

**Pair Mid C19th Stoke Ironstone Plates** floral pattern in the Imari palette

474

**Early C19th Possibly English Delft Plate** painted in puce with simple floral pattern together with pair plain creamware plates (faults)

475

**Collection Grimwades Winton Bainsfather Ware** two dessert bowls, plate, dish, plaque & tumbler (faults)

476

**Two Royal Doulton Dessert Plates** painted with Ludlow and Haverfordwest Castles signed R Brown together with Royal Worcester and Limoges plates

477

**Pair Meissen Trellis Border Onion Pattern Plates**

478

**First Period Worcester Tea Bowl & Saucer** blue fenced garden pattern

479

**First Period Worcester Tea Bowl** with Cantonese export tea bowl and early English b&w serving dish and urn (faults)

480

**Late C18th Worcester Sugar Bowl** with b&w saucer and willow pattern leaf shape pickle dish

481

**Large Unmarked Minton Majolica Table Centre Trough** shaped moulded gallery with cartouche and ring handles (rim chip)

482

**Large Walter Moorcroft Vase C1930-1949** orchid pattern 44cm \$3,000 - \$4,000

483

**Large Meissen Blanc de Chine Table Mirror** shield shape all heavily encrusted with floral birds and cherubs (some faults) 60cm height \$300 - \$600

484

**Pair of Late C19th European Faience Panels** painted with knight in armour and his companion, signed, 59.5cm height \$500 - \$800

## ROYAL WORCESTER

485

**Royal Worcester Urn & Cover** painted with Highland cattle signed J Stinton C1929 H313, 41cm height \$5,000 - \$7,000

486

**Royal Worcester Urn** painted with panels of Highland cattle and loch on moulded dragonscale peach ground signed John Stinton C1905 #2330 31cm height \$3,500 - \$5,000

487

**Royal Worcester Urn & Cover** painted apples and grapes, signed H Ayrton, complete with interior cover, 33cm height \$3,500 - \$5,000

488

**Royal Worcester Rim Handled Specimen Vase** painted with Highland Cattle, signed H Stinton, C1910 #1762, 21cm height \$2,000 - \$3,000

489

**Royal Worcester Handled Specimen Vase with Cover** painted with Highland Cattle, signed H Stinton, C1903 #2021, 18cm Height \$1,400 - \$2,000



482



513



510



464



519

**490**  
**Royal Worcester Demi-tasse Coffee Cup & Saucer** painted with Highland Cattle, signed H Stinton, C1939  
\$600 - \$800

**491**  
**Royal Worcester Demi-tasse Coffee Cup & Saucer** painted with Highland Cattle, signed H Stinton, C1939  
\$600 - \$800

**492**  
**Boxed Royal Worcester Six Demi-tasse Coffee Cups & Saucers** painted with Highland Cattle, signed H Stinton, C1913  
\$5,000 - \$7,000

**493**  
**Boxed Royal Worcester Six Demi-tasse Coffee Cups & Saucers** painted with pheasants, signed JAS Stinton, C1939  
\$2,500 - \$3,500

**494**  
**Royal Worcester Trumpet Vase** painted with pheasants, signed JAS Stinton, C1926, #G923, 19cm height  
\$1,000 - \$1,500

**495**  
**Royal Worcester Trumpet Vase** painted with pheasants, signed JAS Stinton, C1919, #G923, 15cm height (faults)  
\$350 - \$500

**496**  
**Royal Worcester Cylindrical Vase** painted with pheasants, signed JAS Stinton, C1919, #6\161. 15.5cm height  
\$1,400 - \$2,000

**497**  
**Royal Worcester Ewer** painted with pheasant, signed JAS Stinton, C1903, #779  
18cm height  
\$1,000 - \$1,500

**498**  
**Royal Worcester Shaped Circular Plate** painted with Highland Cattle, signed J Stinton, C1917, #164, 26cm dia.  
\$700 - \$1,000

**499**  
**Pair Royal Worcester Plates** painted with both Highland Cattle and Cattle, signed J Stinton, 23cm dia. (both with hairline cracks)  
\$700 - \$1,000

**500**  
**Royal Worcester Plate** hand painted with Highland Cattle, signed J Stinton, 23.5cm dia. (faults)  
\$700 - \$1,000

**501**  
**Royal Worcester Small Plate** painted with Highland Cattle, signed J Stinton, 12cm dia. (a/f)  
\$400 - \$600

**502**  
**Grainger Worcester Handled Specimen Vase** painted with bird on snowy ground, signed JAS Stinton, 15cm height  
\$900 - \$1,300

**503**  
**Royal Worcester Vase & Cover** painted with roses, 24cm height  
\$400 - \$600

**504**  
**Royal Worcester Handled Mantle Vase** painted with roses, signed W Ricketts, 32cm height  
\$500 - \$700

**505**  
**Pair Grainger Worcester Vases** painted with cattle on ivory ground, 22cm height  
\$350 - \$500

**506**  
**Royal Worcester Urn** painted with roses, signed WM Austin, 19cm height  
\$800 - \$1,000

**507**  
**Royal Worcester Handled Specimen Vase & Cover** painted with roses, signed , 24cm height  
\$500 - \$700

**508**  
**Royal Worcester Miniature Cup & Saucer** painted with fruits, signed Roberts



498 / 500



499



494



497



502



507



504



503





485



486



487



488



489



496



493



492



521



530



528



529

**509**

**Royal Worcester Plate** central floral panel painted by E. Phillips within highly ornate gilt border, 23cm dia.  
\$400 - \$600

**510**

**Clarice Cliff Bizarre Jug** painted with geometric pattern, 8cm height  
\$250 - \$400

**511**

**Clarice Cliff Bizarre Biscuit Barrel with Cover** painted with with Latona pattern, 13.5cm height  
\$500 - \$800

**512**

**Clarice Cliff Posy Pot** painted with Orange Roof Cottage pattern, 7cm height  
\$200 - \$400

**513**

**Clarice Cliff Bizarre Fantasque Octagonal Side Plate** painted with yacht pattern, 19cm dia  
\$200 - \$300

**514**

**Gray's Pottery 15pce Demi-tasse Coffee Service** painted with blue stripe pattern (1 cup with handle repair)

**515**

**Crown Ducal Charlotte Rhead Box & Cover** traditional tubelined floral pattern together with ivory style okimono

**516**

**Two Royal Lancastrian Mid 20th Century Serving Dishes** interior turquoise, exterior black glazes (one with rim chip)

**517**

**Carltonware Octagonal Facet Trumpet Vase** romantic landscape printed in gilt on speckled blue ground, 19.5cm height

**518**

**Moorcroft Ovoid Vase** pomegranate pattern, 15cm height  
\$400 - \$600

**519**

**Royal Doulton Royal Commemorative Loving Cup** King George V & Queen Mary 1910 - 1935, Ltd ed 254/1000, 26cm height  
\$400 - \$800

**520**

**Two Belleek Green Mark Jugs** milk jug with moulded basket weave and moulded swirl cream jug

## GLASS

**521**

**Waterford Crystal Glass Suite** Lismore pattern, 12 tall hock, 9 cocktail, 6 white wine, 6 sherry, 6 port, 6 liqueur and decanter  
\$1,000 - \$2,000

**522**

**Royal Doulton Crystal Glass Suite** Georgian pattern, 10 glass settings with three decanters, fruit bowl, water jug, vase and ashtray  
\$800 - \$1,200

**523**

**Six Stuart Crystal Goblets** together with fine notch cut decanter

**524**

**Six Fine Crystal Goblets** together with Orrefors fine hobnail cut water jug

**525**

**Two Crystal Decanters** Edinburgh crystal waisted cylindrical decanter together with other ships decanter

**526**

**Edwardian Etched Glass Part Suite** two decanters, water jug, 16 various goblets

**527**

**Two Crystal Decanters** mixed cut decanters together with Victorian pressed glass compote (faults)

**528**

**C19th Glass Decanter** heavy cylindrical body all with mixed cuts

**529**

**Two C19th Glass Decanters** both with fine ribbed notch and diamond cuts, the smaller decanter with faceted neck rings

**530**

**C19th Table Jug** ovoid body on pedestal foot all with mixed cuts

**531**

**Pair C19th Decanters** heavy facet bottle shape

**532**

**Pair C19th Decanters** faceted bottle shape

**533**

**C20th Heavy Crystal Claret Jug & Cover** compressed cylindrical body with mixed diamond cuts

**534**

**Mid C20th Cobalt Blue Encased Glass Candle Holder** heavy sculptural form

**535**

**Mid C20th Kjellander Vase** carved with naked male with harp, frosted finish

**536**

**Early C20th European Studio Glass Vase** mottled translucent layered decoration of forest, signed Lamartine

**537**

**Amber Venetian Glass Posy** ornate decorations



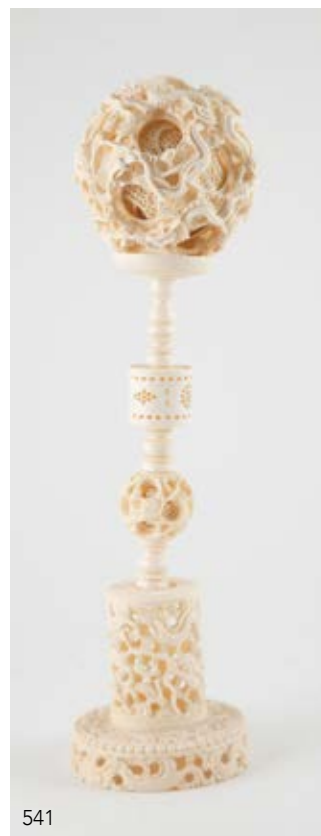
543



544



545



541



546



553



547



571



570

**538**  
**Five Victorian Cranberry Glass Tumblers**

**539**  
**Early C20th Etched Glass Biscuit Barrel**  
together with two Stuart Crystal coupes

**540**  
**Pair Stuart Crystal Finely Etched Goblets**

## ASIAN ARTS

**541**  
**Large Ivory Puzzle Ball on Stand** 36cm  
\$400 - \$600

**542**  
**Carved Ivory Puzzle Ball on Stand** 21cm  
Height  
\$150 - \$250

**543**  
**Signed Carved Ivory Toy Seller** he stands  
with box and figure on a Samurai warrior,  
18cm height  
\$500 - \$800

**544**  
**Carved Ivory Figure of a Peasant** he stands  
with hoe and radish on his back, 16cm height  
\$400 - \$600

**545**  
**Signed Carved Ivory Figure of a Peasant**  
he stands with two baskets and hoe, 16cm  
height  
\$400 - \$600

**546**  
**Carved Ivory Dragon Boat** the boat with  
nine immortals on stained green bone base,  
carved wooden stand, 31cm length  
\$600 - \$1,000

**547**  
**Pair Carved Ivory Emperor & Empress**  
**Figures** on carved wooden stands, 13cm  
height  
\$600 - \$1,000

**548**  
**Carved Ivory Happy Hotei** standing with  
many child attendants, 14.5cm height  
\$300 - \$500

**549**  
**Carved Ivory figure** of a reclining sleeping  
immortal, 20cm length  
\$400 - \$800

**550**  
**Carved Ivory Figure** of seated fisherman  
with his catch wearing oversized hat, 16.5cm  
height  
\$500 - \$800

**551**  
**Large Signed Carved Ivory Covered Urn**  
all over carved in the archaic manner, 16cm  
height (broken finial)  
\$200 - \$400

**552**  
**Ivory Figure of Kwan Yin** stands on lotus  
throne with shield back, together with fisher-  
man figure  
\$250 - \$350

**553**  
**Signed Ivory Figure Group** of immortal with  
child attendant on his back, 9cm height  
\$200 - \$400

**554**  
**Two Ivory Netsuke** of immortals  
\$200 - \$400

**555**  
**Ivory Netsuke** of monkey with fruit  
\$200 - \$400

**556**  
**Signed Ivory Netsuke** standing gent with  
stick together with ivory snuff bottle (no  
stopper)

**557**  
**Two Carved Ivory Netsuke** gent seated  
with large gourd and washer woman

**558**  
**Signed Carved Wooden Netsuke** of a swan

**559**  
**Carved Ivory Figure of an Immortal** stand-  
ing on rock and mounted to s/s letter opener  
knife for Asprey of London  
\$300 - \$500

**560**  
**Carved Ivory Figure of Immortal Goddess**  
she stands with upturned vase of flowers  
20cm height

**561**  
**Two Carved Ivory Animals of Lion &**  
**Elephant**

**562**  
**Three Carved Ivory Figures** (faults)

**563**  
**Carved Coloured Ivory Figure Group** of  
two musicians and two miniature plates  
(faults)

**564**  
**Carved Ivory Specimen Vase** together with  
elephant and miniature Satsuma vase

**565**  
**Carved Ivory Figure Group & Elephant**

**566**  
**Two Carved Ivory Figures** standing  
fisherman with catch and woodsman with  
twig bundle (both faults)

**567**  
**Jade Censor** traditional form, temple lion  
mask handles and lid finial (two lug rings  
missing)  
\$150 - \$300

**568**  
**Two Carved Jade Panels**

**569**  
**Large African Carved Ivory Female**  
**Portrait Bust** 20cm Height  
\$200 - \$400

**570**  
**Large Carved Ivory Sectional Covered Urn**  
all highly carved with temple dogs, dragon  
handles and immortal panels raised on three  
claw feet, 51cm Height  
\$1,500 - \$2,000

**571**  
**Late Victorian Rosewood & Fruitwood**  
**Game Compendium** holding stained red  
carved ivory chess set and checkers  
\$300 - \$500

**572**  
**Three Miniature Watercolours on Ivory**  
signed Joy Parker

**573**  
**Three Chinese Silk Embroidered Panels**

**574**  
**Early C19th Silk Embroidered Table Cover**  
all embroidered polychrome silks, mythical  
and exotic animals (some faults) 66 x 64cm  
\$300 - \$500

**575**  
**Japanese Pink Brocade Red Silk Kimono** all  
embroidered in gold and silver thread with  
crane  
\$300 - \$500

**576**  
**Replica Cast Iron & Brass Samurai Warrior**  
**Helmet**

**577**  
**Late C19th Imari Charger** traditional  
decoration in iron red palette  
46cm dia  
\$300 - \$600

**578**  
**Late C19th Imari Bowl** traditional  
decoration in iron red colour  
40cm dia  
\$400 - \$800

**579**  
**Pair Cantonese Export Mantle Urns**  
traditional decorations in famille rose palette  
35cm Height  
\$1,000 - \$1,500

**580**  
**Late C18th\19th Cantonese Bowl** all  
painted with interior family scenes (restored)  
26cm dia





581



598



577



575



594



602



595 / 596



601



579



582



578



597



588



589



583



587

**581**  
**Cantonese Export Basin** traditional decorations in famille rose palette (faults) 42cm dia  
\$300 - \$500

**582**  
**Large Shallow Relief Carved Celadon Urn** 37cm height  
\$200 - \$400

**583**  
**Pair Japanese Kutani Ware Vases** continuously painted with chrysanthemum blossoms, 25cm height  
\$200 - \$400

**584**  
**Large Blue & White Planter** continuously painted with garden scenes, 28cm dia

**585**  
**Collection Four Plates, Serving Tray & MOP Inlaid Tray**

**586**  
**Paper Scroll** printed and hand coloured botanical study together with other

**587**  
**Pair Vintage Cloisonné Urn & Covers** compressed circular bodies, all floral inset and dragon decorated on copper ground 13cm height  
\$300 - \$600

**588**  
**Enamelled Mei Ping Type Vase** all decorated with garden scenes amongst floral and fruit, made as lamp base, 27cm height

**589**  
**Pair Early C20th Satsuma Specimen Vases** continuously painted with picnic scenes and mountain landscape, 19cm height  
\$300 - \$500

**590**  
**Cantonese Export Plate** traditional panel decorations in famille rose patterns together with odd cup, 28cm dia

**591**  
**Probably Samson of Paris Mug** painted with florals in famille rose palette, 15cm height

**592**  
**Probably Samson of Paris Graduated Three Mugs** diaper and floral pattern in Famille Rose palette

**593**  
**Ginger Jar and Cover** heavy floral and exotic bird decorations with antique type wine goblet

**594**  
**C19th Cantonese Export Hexagonal Brush Vase** all painted with immortal procession in Famille Rose palette, 28cm height  
\$400 - \$600

**595**  
**Underglaze Blue Brush Vase** continuous willow type pattern (a/f), 29cm height

**596**  
**Mei Ping Type Vase** underglaze blue decoration of blossom branch, 25cm height

**597**  
**Three Cantonese Export Plaques** each painted with old man and child, 21cm dia  
\$300 - \$500

**598**  
**Underglaze Blue Cylindrical Storage Jar** painted with mountainous landscape (slight faults), 20cm height

**599**  
**Underglaze Blue Dish, Figure & Soapstone Seal**

**600**  
**Export Ware Satsuma Tureen & Cover** all painted with enamel florals, exotic birds and landscape with heavy gilt enrichments  
\$200 - \$300

**601**  
**White Crackle Glaze Celadon Vase** foot collar and neck decorations 45cm Height  
\$200 - \$400

**602**  
**Late C19th Mantle Vase** applied with ornate trailing dragon handles, turquoise mauve glazes, 47cm height  
\$200 - \$300

**603**  
**Antique Middle Eastern Earthenware Bowl** handpainted decorations on a celadon green glaze (restored)  
26cm dia



624



625



623



630



629

## WOODS & METALS

**605**

**Small C19th Boulle Trinket Box** oblong shape, hinged top with traditional brass inlays (af)  
\$250 - \$400

**606**

**Vict Tortoiseshell Thimble Box** together with a S/S brooch

**606a**

**Four Antique Miniature Tortoiseshell Mandolins** with MOP inlays and bone fret-boards  
\$200 - \$400

**607**

**S/S Cigarette Case** slightly bowed shape with engraved initials, together with a simulated tortoiseshell case

**608**

**Pair C19th French Brass Mantle Urns** two handled vase shape, the detachable domed lids with pineapple finials, on square marble bases and brass feet  
\$300 - \$500

**609**

**Late C19th Grand Tour black Marble & Micro Mosaic Plaque** of serpentine outline with 5 mosaic panels, the central image with 2 sweethearts, the 4 corner roundels with views of famous buildings in Rome, all framed in malachite  
Est \$800 - \$1,500

**610**

**Japy Freres Gilt Bronze Ormolu & Sevres Style Porcelain Mantle Clock** the raised top with pineapple finial, the porcelain face with Roman numerals and painted musical trophies, panel beneath with classical courting sweethearts, within 4 baluster cast columns with pineapple finials, c1880-1900, movement stamped Japy Freres et Cie  
\$1,000 - \$1,500

**611**

**Edw Mahogany Sheraton Revival Mantle Clock** lancet arched top, white enamel dial with arabic numerals, inlaid with oval shell paterae on brass bun feet  
\$200 - \$300

**612**

**Large Late Vict Brass Cased Carriage Clock** with folding carrying handle, visible escapement, white enamel dial with Roman & Arabic numerals, within Corinthian columns, with original red morocco case  
\$800 - \$1,500

**613**

**Late Vict Brass Cased Carriage Clock** folding handle, visible escapement, white enamel dial with Roman numerals in original red morocco case  
\$300 - \$500

**614**

**C19th Oval Miniature Portrait Of A Young Man** half length in black coat in original red morocco case, together with a Vict daguerreotype photo of a seated gent  
\$200 - \$300

**615**

**English Pewter Archibald Knox for Liberty & Co Inkwell** decorated with stylised foliage and 4 turquoise enamel cabochons centred by a hinged well, stamped number 0404 3  
\$200 - \$300

**616**

**C19th French Ormolu & Sevres Style Porcelain Mantle Clock** urn shaped mount with pineapple finial, the dial with Roman numerals, centred by birds and blossom, panel below with figures in a landscape, within ornate scrolling supports  
\$600 - \$1,000

**617**

**Brass Urn Shaped Inkwell** two handled with hinged lid on wide fixed circular base, together with porcelain inkwell of square shape

**618**

**C19th Indian Wooden Vase** overpainted with two figures hunting a tiger and deer

**619**

**Small Regency Mahogany Tea Caddy** of octagonal shape with hinged lid

**620**

**Large Art Nouveau Pewter Centrepiece By Bitter & Gobbers, Germany** oval two handled with stylised grape and vine pattern, c1900  
\$200 - \$300

**621**

**Modern Barograph** wooden with folding handle and glazed front  
\$200 - \$300

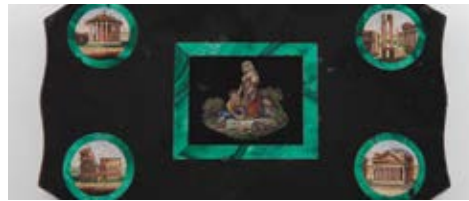


- 622**  
**C19th Russian Painted Wooden Icon** Madonna and Christ Child, panel bowed.  
\$400 - \$800
- 623**  
**Early C19th Balkan/Bulgarian Flintlock Pistol** walnut casing and silver inlaid mounts, reputedly made around the Lake Ohrid area, now in Northern Macedonia, 49cm overall length  
\$600 - \$1,200
- 624**  
**British 1845 Pattern Infantry Officers Sword** gilded brass hilt with VR and folding guard, with scabbard (af)  
\$300 - \$500
- 625**  
**WWII Japanese NCO Katana Sword** with brass floral cast tsuba, menuki, kashira, and fuchi, in leather scabbard  
\$600 - \$1,000
- 626**  
**WWI Bronze Death Plaque** for Frank Silk Whitaker
- 627**  
**WWI Photo Of A Soldier** the frame made from the tip of a wooden propeller
- 628**  
**Large WWI German Iron Cross** with recipients name and 1914 engraved to the back, together with a KPM cup with iron cross in a laurel wreath to the front & four small lead figures
- 629**  
**Replica C18th Style Percussion Pistol** mahogany stock and steel fittings and barrel
- 630**  
**C19th Cased Pair Percussion Pistols by W Pritchard & Son, Presented To Constable A.T.Smith Esq** with finely chequered walnut grips inset with silver engraved family crest, another to the base with engraved armorial, together with numerous accessories including copper and brass flask, turn screw, lead balls, caps, in a red velvet fitted mahogany case, the lid inset with a S/S presentation plaque inscribed Presented by the Borough of Birmingham To A.T.Smith Esq Constable, 1836  
\$3,000 - \$5,000
- 631**  
**Loyal Orange Lodge Paraphernalia** the ribbon with many silver and silver plated badges, medals, one medal by Frank Grady, dates from 1913 up to 1967, together with print of William of Orange  
\$1,000 - \$1,500
- 632**  
**Modern Japanese Black Lacquer Box** with gilded foliate decoration to the lid in original retail card box
- 633**  
**Four Modern Russian Lacquer Boxes** the lids traditionally decorated with flowers, landscape, fairytale and townscape scenes
- 634**  
**Ornate Edwardian Cast Brass Deskstand** oblong shape with cherub handles, pierced centre, the green glazed ceramic well moulded in relief with masks and cabochons, the hinged lid with pineapple finial  
\$200 - \$300
- 635**  
**C19th Oak Letter Rack** three division with wirework base, together with a pair of vintage size 5 wooden shoe stretchers
- 636**  
**Vict Walnut & Brass Bound Portable Writing Box** with inset brass shield
- 637**  
**Edw Wooden Card/Games Box** the top applied with an oval rosewood panel with 4 simulated cards, interior with 4 detachable rosewood crossbanded lidded boxes containing coloured gaming counters and 4 ceramic card discs, together with a German oak coin box  
\$200 - \$300
- 638**  
**Antique Chinese Bone & Bamboo Mah Jong Set** in a fitted rosewood case with steel carrying handles, the lift up front inlaid in brass  
\$300 - \$500
- 639**  
**Vict Papier Mache Portable Writing Box** the lid painted and inlaid with flowers, together with a black Forest fruitwood telescopic book slide
- 640**  
**Geo III Mahogany Hanging Candle Box** traditional tapering form with hinged lid, the fretwork top pierced with a small diamond and 2 hearts  
\$200 - \$400
- 641**  
**Vict Burr Walnut & Brass Bound Portable Writing Box**
- 642**  
**Pair Vintage Wooden Riding Boot Trees**
- 643**  
**Set of Three Antique Graduated Copper Measures** cylindrical with brass handles, comprising, 2 pt, 1 pt and 1/2 pt
- 644**  
**Antique Copper Watering Can** oval with swing handle
- 645**  
**Enbeeco Comet M/C 20X Brass 2 Draw Telescope** made in London, with lens dust cap, 60cm fully extended  
\$200 - \$300
- 646**  
**Antique Copper Coal Helmet** together with brass jelly pan with fixed steel handle, and pair of embossed brass plates
- 647**  
**Vict Copper Warming Pan**
- 648**  
**D Ashleigh - Bronze Bust Of Prometheus** signed with initials, and dated 4/6/81  
\$200 - \$400
- 649**  
**Mahogany Cased Set of Scientific Beam Scales** on a marble base with slide up front and rear doors
- 650**  
**Large Carved Ivory Pipe** with leaf decorated bowl and spiral shaft, together with a large alabaster opium style pipe, both in fitted cases
- 651**  
**Cased Display Seven Various Pipes** including three with animal form bowls
- 652**  
**Cased Display 14 Clay Pipes**
- 653**  
**Cased Display Ten Various Pipes**
- 654**  
**Cased Display Nine Various Pipes** including large Bavarian, clay, S/S mounted Sherlock Holmes style etc, also a pipe smokers knife
- 655**  
**Cased Display Eight Various Pipes & Novelty Accessories**
- 656**  
**Cased Display 15 Various Pipes** including four church wardens clay examples
- 657**  
**Cased Display Seven Various pipes** large Meerschaum formed with a dog in a landscape, Bavarian china & briarwood example
- 658**  
**Cased Display Six Meerschaum Pipes** each with bowls in the form of a Cossack
- 659**  
**Cased Display 15 Wooden Bowl Pipes** together with another display with two pipes & 12 interchangeable bowls
- 660**  
**Cased Display Eight Wooden Pipes** six with S/S Mounts
- 661**  
**Oak Cased Display Six Small Bavarian Pipes**
- 662**  
**Cased Display Ten Pipes** including a frog and two bird form bowl examples





605



609



614



616



610



622



613



611



612



621



640



637



660





# **Session Three**

## **Maori & Pacific Artefacts**

**Wednesday 20 May - 2pm start**

**Lot 663 - 713**

- 663**  
**C18th or earlier Toki** relatively fine curved blade, tapering form  
 L.18cm.  
 Y-Number Pending  
 \$200 - \$400
- 664**  
**C18th or earlier Toki** fine curved blade, tapering form  
 L.17cm  
 Y-Number Pending  
 \$300 - \$600
- 665**  
**C18th or earlier Toki** wide blade, tapering form.  
 L.30cm.  
 Y-Number Pending  
 \$300 - \$600
- 666**  
**C18th or Earlier Large Toki** deep lashing grooves to butt, blunt blade  
 L. 33cm  
 Y-Number Pending.  
 \$300 - \$600
- 667**  
**C18th or earlier Toki** one of classic tapering form  
 L.20cm, 21cm  
 Y-Number Pending  
 \$200 - \$400
- 668**  
**Three C18th or earlier Toki** of classic tapering form  
 L. 20cm, 20cm, 21cm  
 Y-number Pending  
 \$200 - \$400
- 669**  
**Three C18th or earlier Toki** of classic tapering form  
 L.18cm,15cm,13cm  
 Y-Number Pending.  
 \$200 - \$400
- 670**  
**Four C18th or earlier Toki** of classic tapering form  
 L.14cm,13cm,12cm,12cm  
 Y-Number Pending.  
 \$200 - \$400
- 671**  
**Four C18th or earlier Toki** of classic tapering form  
 L15cm,14cm,14cm,12cm  
 Y-Number Pending  
 \$200 - \$400
- 672**  
**Four c18th or earlier Toki** of classic tapering form  
 L14cm, 14cm,13cm,13cm  
 Y-Number Pending  
 \$100 - \$200
- 673**  
**Four C18th or earlier Toki** one with lashing tang  
 L.17cm, 12cm, 12cm,10cm  
 Y-Number Pending  
 \$100 - \$200
- 674**  
**Four C18th or earlier small Toki** of classic tapering form.  
 L.11cm, 8cm, 8cm, 8cm  
 Y-Number Pending  
 \$200 - \$400
- 675**  
**Six C18th or Earlier Small Toki** of classic tapering form  
 L. 8cm, 9cm, 9cm, 7cm, 5cm, 5cm.  
 Y-Number Pending.  
 \$100 - \$200
- 676**  
**C18th or earlier Small Greenstone Toki** of classic tapering form  
 L. 7cm  
 Y-Number Pending  
 \$200 - \$400
- 677**  
**Three C18th or earlier Small Greenstone Whao (chisel)** two of classic tapering form, the third of rounded crude form together with a Toki of white stone material  
 L. 7cm, 6cm, 5cm, 11cm.  
 Y-Number Pending.  
 \$200 - \$400
- 678**  
**C18th or earlier Greenstone Kuru (pendant)** of flared, oval form with hourglass form suspension hole  
 L. 5cm.  
 Y-Number Pending.  
 \$300 - \$600
- 679**  
**C18th or Earlier Greenstone kuru (Pendant)** of inverted flared form. Large suspension hole  
 L. 5cm  
 Y-number Pending  
 \$300 - \$600
- 680**  
**C19th or earlier Bone Ngira (needle)** of slightly curved form, machine drilled suspension hole  
 L. 20cm  
 Y-Number Pending  
 \$200 - \$400
- 681**  
**C18th or earlier Bone Ngira (Needle)** of slightly curved form (possible damage to point)  
 Y-Number Pending.  
 \$300 - \$600
- 682**  
**Tuturu Kete** tobacco pouch made from pingao, sedge grass c. 1890 - 1910  
 Y20886  
 \$100 - \$200
- 683**  
**A C20th Bone Hei Tiki** of relatively crude form. Hands to thighs  
 H. 5.5cm  
 Y3905  
 \$200 - \$400
- 684**  
**C19th or early C20th Greenstone Hei Tiki** red sealing wax eyes, peaked head, one hand to neck, the other to thigh. Head tilted to left shoulder  
 H. 9.5cm  
 Y3904  
 \$2,000 - \$4,000
- 685**  
**Pre C19th Carved Maori Greenstone Hei Tiki** head tilted to left shoulder, both arms to thighs. Hourglass form suspension hole, with stand.  
 H.10cm  
 Y-Number Pending  
 \$14,000 - \$18,000
- 686**  
**Rare Late C19th Maori Carved Tianea (Armchair)** all over carved with tiki masks, manaia and takarangi spirals with paua shell inset eyes. The seat frame with linear, geometric decoration. Leather covering requires attention.  
 Provenance Ex John Gow Folk Art Collection, Dunbar Sloane 2003.  
 Formerly purchased from auction in England.  
 Y09644  
 \$25,000 - \$35,000
- 687**  
**C18th Puta Muka** of the rounded form with distinct tang  
 L.24cm.  
 Y-Number pending.  
 \$100 - \$200
- 688**  
**C18th or Earlier Patu Muka (Stone Pounder)** of tapering cylindrical form, flared butt  
 L. 31cm.  
 Y-Number Pending.  
 \$400 - \$800
- 689**  
**C18th or Earlier Patu Muka (Stone Pounder)** of rounded form, worn butt  
 L.30cm  
 Y-Number Pending  
 \$300 - \$600





686



695



694



684



693a



693



696





697



**690**  
**C18th or earlier Patu Muka (Stone Pounder)** of bulbous form with fine ridges to butt  
L. 23cm  
Y-Number Pending  
\$500 - \$1,000

**691**  
**C18th or Earlier Greenstone Toki (adze)** broken with indications of further working together with Stone Toki (adze) of classic tapering form, repair to middle  
L. 12cm, 17cm  
Y-Number Pending  
\$500 - \$1,000

**692**  
**Six C18th or Earlier Toki** all of the classic tapering form. The smallest one greenstone, some with various locations inscribed to surface together with neolithic type triangular form flint  
L. 9cm, 17cm, 13cm, 14cm, 9cm, 5cm.  
Y-Number Pending.  
\$200 - \$400

**693**  
**C18th or Earlier Small Patu Onewa (Stone Club)** two ridges to butt. Large hourglass suspension hole, chips to blade  
L. 26cm.  
Y-Number Pending  
\$1,000 - \$2,000

**693a**  
**C18th or Earlier Puta Onewa (Stone Club)** unusual reduced butt with flared ends, two ridges to top, hourglass form suspension hole, small chip to blades  
L. 37cm  
Y14628  
\$3,000 - \$6,000

**694**  
**Late C19th/early C20th Carved Patu Paraoa ( whalebone club)** of relatively crude form with three large ridges to butt, large thin blade  
L. 40cm  
Y-Number pending  
\$1,000 - \$2,000

**695**  
**Late C18th/early C19th Carved Patu Paraoa ( whalebone club)** nine fine ridges to butt, rectangular suspension hole, relatively thin blade  
L. 34.5cm  
Y-Number Pending  
\$3,000 - \$6,000

**696**  
**Late C19th/early C20th Greenstone Mere** of relatively crude form. Five ridges to butt, off centre suspension hole, fine blade  
L. 34cm  
Y-Number Pending  
\$3,000 - \$6,000

**697**  
**Carved C19th Wooden Waka Huia** all over geometric pakati decoration supported by two figures with protruding tongues either end  
Y21000  
\$2,000 - \$4,000

**698**  
**Late C19th Carved Wooden Taiaha** dog fur collar with flax lashing. Tongue carved with geometric spirals and notches over tiki mask  
L. 155cm  
Y-Number Pending  
\$1,000 - \$2,000

**699**  
**C19th or Early C20th Unfinished Wooden Taiaha** crudely shaped tongue and mask  
L. 145cm  
Y-number Pending  
\$300 - \$600

**700**  
**Late C19th/early C20th carved Wooden Tokotoko (walking stick)** the top carved figure with one hand to the chest, the other to groin. Over tiki mask and three further manaia masks. Intricate all over notch, spiral and chevron decoration. Paua shell inset eyes.  
L. 95cm  
Y-number Pending

**701**  
**Early C20th Toki Poutangata (ceremonial adze)** full figure to outside, mask to one side above geometric notch and chevron decoration, square suspension hole, small greenstone toki with muka and dog fur lashing  
L. 30cm  
Y-Number pending  
\$500 - \$1,000



**702**

**Greenstone Boulder** with one surface cut  
23x17x15cm. Approx. 7.5kg  
\$200 - \$500

**703**

**Two Small Greenstone Boulders** one with  
cut surface together with greenstone boulder  
with two cut surfaces  
L. 15.5cm, 14cm.  
W. 1.3kg, 2kg.

**704**

**Assorted Greenstone Flakes/Boulders**  
\$150 - \$300

**705**

**Kauri Gum Nugget**  
L. 16cm  
W. 500g

**706**

**Two Small Huia Feathers** both approximate  
length 11cm  
Y-Number Pending  
\$500 - \$1,000

**707**

**Taxidermy Swamp Hen** on wooden stand.  
H. 27cm  
\$200 - \$400

**708**

**Fijian Kiakaro Club** orthodox incurve to top,  
two shells lashed to shaft  
L. 90cm  
\$300 - \$500

**709**

**Fijian Rootstock Club** the rootstock of the  
tree forming the club, simple geometric  
design to the handle  
L. 113cm  
\$200 - \$300

**710**

**Fijian Rootstock Club** the rootstock of the  
tree forming the club. Remnants of lashing  
to handle  
L. 106cm  
\$200 - \$300

**711**

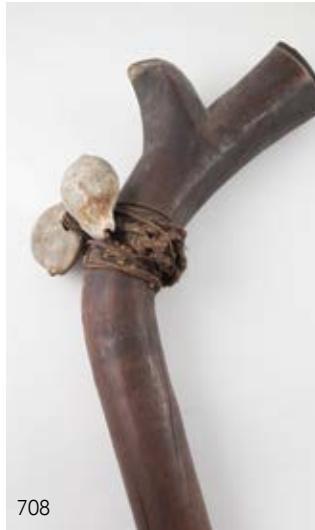
**Fijian Rootstock Club** the rootstock of the  
tree forming the club  
L. 109cm  
\$200 - \$300

**712**

**Samoa(?) Pole Club** the handle with rectan-  
gular geometric decoration.  
L. 88cm  
\$200 - \$300

**713**

**Solomon Island Club** ridges to opposing  
sides of diamond form blade. mother of  
pearl "eye" to top, flared handle  
L. 93cm  
\$200 - \$300



708



709



711



710



712



713





# **Session Four**

# **Sterling Silver**

**Wednesday 20 May - 3pm start**

**Lot 716 - 829**

- 716**  
**Geo IV S/S Sugar Basket** neo-classical footed boat shape with pierced border and swing handle, London 1823, maker Hester Bateman  
\$200 - \$300
- 717**  
**Geo IV S/S Pepperette** vase shape with engraved crest, London 1822, together with a small Geo III S/S sugar caster  
\$200 - \$300
- 718**  
**Geo III S/S Wine Funnel** plain with fluted spout and rim, engraved crest, London 1800  
\$300 - \$400
- 719**  
**Geo III S/S Mustard Pot** footed part fluted form, with plain thumbpiece and gadrooned rim, London 1814, together with a fiddle pattern spoon
- 720**  
**2 Pairs Of Hester Bateman S/S Sugar Tongs** with bright cut engraving
- 721**  
**Vict Scottish S/S Hot Water Jug** baluster shape, part fluted with embossed foliate and scroll decoration, Glasgow 1897  
\$300 - \$500
- 722**  
**C19th Sheffield Plate Coffee Pot** Queen Anne design, plain baluster shape with fluted bird form spout
- 723**  
**Pair S/P Table Candlesticks** tapering columns on shaped square loaded bases
- 724**  
**Cased Set Six S/S Handled Fruit Knives & Forks** together with a pair of ceramic handled salad servers
- 725**  
**Large S/S Gilt Coronation Fork & Spoon** together with a set of 12 matching tea-spoons, of traditional design  
\$200 - \$300
- 726**  
**Cased Set S/S Gilt & Enamel Teaspoons** with floral decorated handles, together with a cased set of Art Deco S/S spoons
- 727**  
**.800 European Silver Salt** oval shape with twin dragon handles and embossed foliate and cartouche decoration
- 728**  
**Vict S/S Bon Bon Bowl** with floral and scroll rim, and pierced lattice panels, Sheffield 1893
- 729**  
**Vict 65 Piece S/S Oak Cased Canteen of Cutlery** fancy scroll pattern comprising, 12 tableforks, 12 tablespoons, 12 dessert forks, 12 dessert spoons, 12 teaspoons, soup ladle, pair of basting spoons and pair of sauce ladles, some different makers and dates.  
\$3,500 - \$5,000
- 730**  
**Boxed Set Six NZ S/S Coffee Spoons** with teardrop shaped greenstone tops
- 731**  
**Geo VI S/S Gravy Boat** with scroll cast rim on shell top scroll legs with hoof feet, Birmingham 1948
- 732**  
**Set Three Indian Silver Bowls** traditional elaborate embossed design with figures in relief, comprising a smaller pair and other larger bowl  
\$200 - \$400
- 733**  
**Pair Vict Sheffield Plate Wine Coasters** gadrooned rims and bodies, together with a S/S dwarf candlestick
- 734**  
**S/S Mustard Pot** oblong shape with hinged lid, together with spiral fluted pepperette and a small circular Eastern silver dish
- 735**  
**Geo III S/S Soup Ladle** fiddle and thread pattern, London 1800, makers William Ely & William Fearn
- 736**  
**Two S/P Soup Ladles** one fiddle pattern, the other Kings pattern
- 737**  
**Pair Edwardian Art Nouveau S/S Salts** two handled lozenge shape, with scrolling floral decoration, and blue glass liners, Birmingham 1903
- 738**  
**Pair European Silver Pepperettes** plain octagonal form, together with a pair of S/P oval salts with pierced floral, cherub and cartouche bodies and blue glass liners
- 739**  
**.800 Silver Sugar & Cream On Stand** or-nately cast with panels of figures, florals and scrolls, with 2 spoons
- 740**  
**Pair Siam S/S Tankards** each with an applied roundel depicting a buddha in a surround of scrolls  
\$200 - \$300
- 741**  
**Four Small Circular S/S Photo Frames** comprising a set of 3 Eastern silver frames, and a S/S example
- 742**  
**Vict S/S Card Tray** shaped circular with shell and scroll cast rim and engraved central crest on 3 hoof feet, London 1843  
\$300 - \$400
- 743**  
**Cased Set Danish S/S & Enamel Coffee Spoons**
- 744**  
**Cased Set Six Vict S/S Teaspoons & Tongs** with scroll decorated handles, together with a small S/S Capstan inkwell
- 745**  
**Five Chinese Silver Teaspoons**
- 746**  
**Geo III S/S Cream Jug** footed baluster shape with embossed florals, swags and rosettes, London 1774  
\$150 - \$300
- 747**  
**Vict S/S Cream Jug** plain baluster shape on scroll legs, London 1895
- 748**  
**Pair C19th European Silver Candlesticks** tulip shape sconces, fluted baluster columns on shaped square bases (loaded) with embossed acanthus, lattice, scrolling foliate and cherub decoration, export marks for London 1881, 20cm height  
\$300 - \$400
- 749**  
**Vict S/S Bon Bon Basket** oval shape with swing handle, pierced floral, shell and cartouche decorated body on ball feet, Sheffield 1897
- 750**  
**Small Vict S/S Christening Mug** footed cylindrical with embossed decoration, Chester 1899, together with S/S cream jug
- 751**  
**Pair Edw VII S/S Elliptical Salts** neo-classical design with bright cut engraving, Birmingham 1902, with two pairs Old English salt spoons, other spoon and pair of baluster pepperettes  
\$200 - \$300
- 752**  
**Set Six Geo V S/S Fish Knives & Forks** with bone handles, Birmingham 1929  
\$200 - \$300
- 753**  
**Small Eastern Silver Five Piece Cruet Set** with 3 cylindrical condiments and spoon on two handled tray
- 754**  
**WMF Claret Jug** plated mount with husks and floral swags on a square tapering cut glass body, together with a smaller WMF jug  
\$200 - \$300





797



812



768



765



718



732



742



740



722



748



754



788

- 755**  
**Large Iced Water Jug** with plated mount and handle and slightly tapering faceted glass body, 33cm height
- 756**  
**Large Iced Water Jug** with S/P mount and handle, baluster cut glass body with 2 engraved panels, 34cm height
- 757**  
**Vict S/P Card Tray** scroll cast rim and engraved centre, together with, 4 napkin rings, S/S top glass vanity jar and small pot lid
- 758**  
**Cased Art Nouveau S/S 5 Piece Cruet Set** each piece decorated with a band of flowers, Birmingham 1907
- 759**  
**Cased Set Of 6 S/S Coffee Spoons** together with a cased set of 6 MOP handled fruit knives
- 760**  
**WMF S/P 3 Division Hors D'Oeuvres Basket** oblong D end shape with fluted fixed handle, together with a WMF leaf shaped dish.
- 761**  
**Geo V S/S Photo Frame** plain oval, Birmingham 1916
- 762**  
**Cased Set 6 S/S Coffee Spoons** together with a s/p 4 piece cruet set and a muffin dish
- 763**  
**S/P Melon Shape Teapot** the lid with floral finial, scroll cast rim and feet
- 764**  
**Pair QEII S/S Candlesticks** plain tapering columns on circular bases, London 1980 \$300 - \$400
- 765**  
**Vict S/S Cafe Au Lait** baluster part fluted form, ebonised side handles on scroll legs \$400 - \$600
- 766**  
**Pair Of Heavy Cast S/P Candlesticks** with pierced cylindrical sconces and acanthus cast columns and bases, 29cm height.
- 767**  
**Edw VII Large S/S Sugar Caster** spiral fluted body, the pierced dome top with urn finial, London 1904 \$200 - \$300
- 768**  
**Edw VII S/S Vanity Tray** oblong shape with gadrooned rim and ornately allover embossed foliate scrolls and central cartouche, Birmingham 1903 \$200 - \$300
- 769**  
**QEII S/S Gravy Boat** traditional form with gadrooned rim on shell top hoof feet, together with a S/S cream jug \$200 - \$300
- 770**  
**S/S Footed Bob Bon Bowl** with pierced border, together with S/S topped glass vanity bottle, set of 4 small Alpaca silver ashtrays, and 3 small Eastern silver pin dishes
- 771**  
**Antique S/S Dog Nose Pattern Tablespoon** marks worn away, together with a Vict S/S sifter ladle
- 772**  
**Pair Of Vict S/S Tableforks** fiddle pattern, London 1845, together with 3 various Hanoverian and Old English S/S tablespoons \$200 - \$300
- 773**  
**6 Pieces Of S/S & S/P Flatware** comprising, a pair of S/S coffee spoons, small sifter ladle, plain single spoon, s/p berry spoon and salt spoon
- 774**  
**Set Of 3 S/P Graduated Meat Dish Covers** with beaded rims and handles \$200 - \$300
- 775**  
**Pair Of Vict S/S Sugar Casters** footed baluster shape with pointed finials, engraved decoration, London 1853, makers Edward & John Barnard
- 776**  
**Cased Set 6 S/S Teaspoons & Sugar Scoop** with husk decorated handles
- 777**  
**Tiffany & Co S/S Mid Century Shallow Bowl** square scalloped form, design number 23587, c1955/56 \$300 - \$500
- 778**  
**Edw VII S/S Specimen Vase** flowerhead top, tapering column on circular base, Birmingham 1903
- 779**  
**Set Six Edw VII S/S Dessert Spoons** fiddle pattern with engraved initial, Sheffield 1904 \$250 - \$350
- 780**  
**Composed Set Six C19th S/S Dessert Spoons** fiddle pattern with engraved initials \$250 - \$350
- 781**  
**Composed Set Five C19th S/S Tableforks** fiddle pattern with engraved initials \$200 - \$300
- 782**  
**Set Six Wm IV S/S Dessert Forks** fiddle pattern with engraved initial, London 1831 \$200 - \$300
- 783**  
**Composed Set Six C19th S/S Dessert Forks** fiddle pattern with engraved initial \$200 - \$300
- 784**  
**Small Group Of S/S Flatware** comprising, sugar nips, 4 various fiddle pattern spoons, 2 Old English spoons, 2 Hanoverian forks (1af) and 2 circular napkin rings.
- 785**  
**Irish S/S Circular Shallow Dish** engraved with a Celtic border, Dublin 1930, together with a small octagonal S/S ashtray
- 786**  
**Canteen Of Community Plate Cutlery** with bright cut handles, including, tableforks, tablespoons, table knives, soup spoons, dessert knives and forks, butter knives, sauce ladle \$200 - \$300
- 787**  
**Group Of Small S/S & Flatware** including, a pair of Towle S/S dishes, 3 S/S napkin rings, and 12 cutlery oddments.
- 788**  
**Pair Gorham S/S Table Candlesticks** tapering columns on wide loaded circular bases with mask feet, 28cm height \$300 - \$500
- 789**  
**Edw VII S/S Twin Handled Vase** neo-classical design of elongated ovoid shape on loaded circular base, 27cm height \$150 - \$300
- 790**  
**Two Vict S/S Christening Mugs** the larger of cylindrical shape, the smaller footed part fluted, both with engraved decorations, Birmingham 1865 & 1890
- 791**  
**Two S/S Photo Frames** upright oblong shape, one plain, the other decorated with ribbons and husks.
- 792**  
**Part Suite S/P N.Z.R. Cutlery** with engraved handles
- 793**  
**Small Pair Dutch Silver Vases** footed baluster shape with twin figural handles, embossed floral and scroll decoration. \$200 - \$300



821



807



821 (detail)



804



805



743



808





809



**794**

**Vict S/S Deskstand** oval two handled form with Greek key border, central hexagonal taperstick and 2 detachable cut glass wells, London 1865  
\$200 - \$300

**795**

**Cased Set 6 Norwegian S/S Coffee Spoons** with fancy scroll handles, together with a cased set of 12 cake forks and a cased set of 4 S/P napkin rings

**796**

**Vict S/S Oblong Deskstand** with gadrooned rim, the central oval box with hinged lid, 2 hobnail cut detachable glass wells, on ball and claw feet, London 1894  
\$300 - \$500

**797**

**Pair Geo III S/S Table Candlesticks** the spool shaped sockets with gadrooned borders, detachable nozzles (unmarked) with acanthus cast hexagonal columns and bases, London 1769, maker John Carter, 27cm height  
\$1,500 - \$2,500

**798**

**Wm IV S/S Basting Spoon** fiddle and thread pattern with engraved initial, London 1836  
\$200 - \$300

**799**

**Exceptionally Rare Early 17th Century Scottish Silver Disc-End Spoon** the disc engraved with initials SCL and simple engraved decoration beneath, the back with initials DBS. Makers mark of Gilbert Kirkwood and Deacons mark for James Denniestoun, with central mark of Edinburgh Castle  
\$4,000 - \$8,000

**800**

**Cased Pair Of S/P Fish Servers** with pistol grip antler handles

**801**

**Pair Geo III S/S Sauce Ladles** Onslow pattern with scallop bowls, London 1778, maker Thomas Chawner  
\$200 - \$300

**802**

**Geo III S/S Soup Ladle** Old English pattern, London 1797

**803**

**Pair Geo III S/S Salts** oblong bombe shape with lion mask and ring handles on paw feet, London 1808, with a pair of Old English pattern spoons and a pair of Geo III style S/P circular salts and spoons.  
\$200 - \$300

**804**

**Fine Chinese Silver Gilt, Filigree & Enamel Tea Caddy** circular lobed form, the lid with lotus form finial, jade collar, the body overlaid in brightly coloured enamels of bird and blossom, and hardstone cabochons, c1900-1910, 18cm height  
\$2,000 - \$4,000

**805**

**Fine Chinese Silver Gilt, Filigree & Enamel Ginger Jar** traditional baluster shape with detachable lid, overlaid in brightly coloured enamels with birds and blossom and hardstone cabochons, on later wooden base, c1900-1910, 21cm height  
\$2,000 - \$4,000

**806**

**Pair Geo V S/S Tablesticks** hexagonal tapering on wide bases, Sheffield 1916, makers Walker & Hall,  
\$300 - \$400

**807**

**Chinese Silver Oblong Cigarette Box** by Tuck Chang of Shanghai, the top and side decorated in low relief with dragons and flaming pearls  
\$1,000 - \$1,500

**808**

**3 Sets Of 6 Scandinavian S/S Gilt Coffee Spoons** each set with different coloured enamels

**809**

**An Extensive Suite Of Angora Pattern S/P Cutlery** contained in a 3 drawer walnut canteen on cabriole legs  
\$800 - \$1,200

**810**

**Vict S/S Mustard Pot** cylindrical shape with pierced scrollwork thumbpiece and body and blue glass liner, London 1855, makers John & Edward Barnard, together with a fiddle pattern spoon

**811**

**Pair Vict S/S Table Candlesticks** neo-classical design, oval fluted form, loaded bases, Sheffield 1891  
\$300 - \$400

**812**

**Geo V S/S Three Piece Tea Set** footed octagonal baluster form, Sheffield 1926, makers Harrison Brothers And Howson (George Howson)  
\$600 - \$800

**813**

**Geo V S/S 6 Division Toastrack** with fixed loop handle on ball feet, Sheffield 1926

**814**

**Composed Set Of 12 Vict S/S Teaspoons** fiddle pattern, engraved initial, various dates and makers, together with a part set of modern table knives  
\$200 - \$300





729

**815**

**Eastern Silver Coffee Pot** plain baluster form with acanthus decorated scroll handle, together with a lidded 2 handle sugar bowl  
\$200 - \$300

**816**

**Art Nouveau S/S Cigarette Box** with hinged mahogany and satinwood crossbanded lid and outset scroll legs  
\$200 - \$300

**817**

**Pair Silver Table Lighters** in the form of classical oil lamps

**818**

**Small S/S Specimen Vase** together with a S/S backed hand mirror, and green glazed ceramic vase with S/P mounts

**819**

**Two Vict Cut Glass & S/S Mounted Scent Bottles** of sizes, together with a small over-painted blue glass box

**820**

**S/S 6 Piece Dressing Table Set** embossed scrolling design comprising, a pair of candlesticks, powder bowl, hand mirror and 2 brushes  
\$200 - \$300

**821**

**A Fine Louis XVI 18ct Gold Snuff Box** oval shape, engine turned decoration with yellow gold borders, c1778/79, 123gms  
\$10,000 - \$15,000

**822**

**Edw VII S/S Vesta Case** plain form

**823**

**S/S Back Hand Mirror** together with a small square S/S photo frame, and 4 various small bone/ivory oddments

**824**

**Collection Of Miniature S/S Commemorative Plates**

**825**

**QEII S/S Oblong Cigarette Box** engine turned on bracket feet, Birmingham 1951, together with a cased pair of S/S back clothes brushes

**826**

**S/S Handled Shore Horn & Button Hook** together with a set of 5 S/S Art Deco coffee spoons

**827 no lot**

**828**

**Victorian Large Paisley Shawl of Traditional Form** some faults

**829**

**Vintage Mid C20th Black Lizard Handbag**







# **Session Five**

## **Framed Works**

### **Period Furniture**

**Wednesday 20 May 5pm start**

**Lot 850 - 1056**





851



856



853



859



860

## FRAMED WORKS

850

**Three Antique Hand Coloured Maps after Saxton** Somerset 41 x 53cm  
South Hampton 41 x 45cm  
Wiltshire 44 x 49cm

851

**Plan of Mann-kori Pah...New Plymouth NZ** surveyed and drawn by Fred R Carrington, 1840 - 1846, 66 x 96cm  
\$850 - \$1,000

852

**Monochrome Map** by Rigobert Bornne, Carte de La Nouvelle Zealand, 36 x 25cm

853

**C1790 Book Plate Chart** hand coloured, de rivier de theems en mercurius baai in Nieuw Zealand, 31 x 46cm  
\$200 - \$300

854

**C1777 Book Plate Chart** Sketch of Dusky Bay in New Zealand 1773, 22 x 39cm  
\$200 - \$300

855

**Two Book Plate Engravings** Portrait of Tiarrah, Chief of the Bay of Islands, NZ & A Warrior of NZ in the South Pacific Ocean 12.5 x 8.5cm, 19 x 14cm

856

**Unframed C1832 Chart of Cook's Strait** Dumont D'Urville from his Voyage of Discovery in the Astrolabe 1827, 60 x 89cm  
\$400 - \$800

857

**Four Antique Hand Coloured Maps** Irlan Diae, two versions, Anglia, Scotia et Hibernia, Orientalis (some faults) 35 x 48cm  
\$200 - \$400

858

**Two Late C19th Maps** Scotland and Wales engraved by S. Hall, 38 x 26cm

859

**Antique Speed Hand Coloured Map** Gloucestershire, 39 x 52cm  
\$300 - \$400

860

**Antique Speed Hand Coloured Map** Surrey, 41 x 54cm  
\$300 - \$500

861

**Hand Coloured Map**, P Lapie of Royaume Des Pays-bas

862

**Geological Sketch Map of NZ** by James Hector, Wellington 1873 (faults), 82 x 57cm

863

**C F Goldie Ltd Ed of 600 Print** Ena Te Papatahi 39 x 34cm

864

**Colonial Pencil Sketch** of the Holy Trinity Church, Lyttelton by Jane Wales, the family being parishioners from 1870, 38 x 53cm

865

**John A. Lees' Weekly Poster** 1940 Bonded Debt or a Guaranteed Bond for the Soldier 56 x 44cm

866

**C E Brees Polychrome Book Plate** three Panorama views of Wellington (foxed) 34 x 53cm

867

**Three Turnbull Library Christopher Aubrey Prints** Views of Wellington etc, 31 x 53cm

868

**Charles H Howarth - Chedworth, Gloucester** watercolour, 27 x 37cm

869

**Charles H Howarth - Cockington, Devon** watercolour, 26 x 36cm

870

**C H Howarth - Wool Village, Dorset** watercolour, 25 x 35cm





872



887



889



871



884



870



874

**871**  
**Unknown European - Bridge of Sighs, Venice** watercolour, 24 x 59cm

**872**  
**Attributed W Russell Flint - Cloud Encrusted Landscape** watercolour  
signed & dated 1901, 24 x 28cm  
\$300 - \$600

**873**  
**C H Howorth - Rufolo Place, Ravello**  
watercolour, 28 x 22cm

**874**  
**C H Howorth - Picnicking under Trees**  
watercolour, 25.5 x 37.5cm

**875**  
**Charles H Howarth - The Hill Farm, Cockington** watercolour, 26 x 36cm together  
with other watercolour by the same hand (2)

**876**  
**C H Howorth - Queens Cottage**  
watercolour, 24 x 34cm

**877**  
**W J Rush - NZ Coastal Landscape (1919)**  
watercolour, 18 x 26cm

**878**  
**Unknown European - The Basket of Flowers** watercolour, signed with initials  
'A.D.', 20 x 16cm

**879**  
**G Da Dozzo - Venice**  
watercolour, 25.5 x 34cm

**880**  
**William Hounsom Byles (British) - The Tavern Door** oil on board, 26 x 25cm

**881**  
**Military Framed Monochrome Bookplate**  
20 x 35cm

**882**  
**Unknown - Landscape** gouache, 26 x 36cm

**883**  
**Pair English Marine Harbour Studies**  
oil on board  
27.5 x 48cm each

**884**  
**K Douglas (Herbert Cole) - Sail & Steam In An Estuary,** watercolour, 18 x 45cm

**885**  
**C H Howorth - Lyall Bay** watercolour, 22 x 38.5cm together with Attributed J M Nairn -  
Cuba Street/ Webb Street  
watercolour, 21 x 28cm

**886**  
**Hugh L Norris (British)- Ivy Clad Winter Trees** watercolour, 26 x 36cm

**887**  
**Hugh L Norris (British) - Cattle Watering, Breamore** watercolour, 25 x 35cm

**888**  
**Hugh L Norris (British) - A Bend in the Stream (1906)** watercolour, 25 x 35cm

**889**  
**Hugh L Norris (British) - Ragwort & Thistles** watercolour, 23 x 28.5cm

**890**  
**Hugh L Norris - A Stream With Buildings Beyond** watercolour, 23 x 29cm

**891**  
**British C19th - Portrait of English Lady in Lace Bonnet & Collar** oil on canvas,  
75 x 63cm

**892**  
**George Smith (British) - Young Woman Preparing Vegetables** oil on board  
28 x 22cm  
\$750 - \$1,000

**893**  
**European C19th - Fisherman with Catch**  
oil on board, in original heavy gilt frame  
14.5 x 19.5cm  
\$300 - \$600



892



922



893



909

**894**

**Set of Five Polychrome Engravings**

after Borcas, Views of Dublin  
31 x 46cm each

**895**

**Watercolour of Jazz Musician** 25 x 19cm  
together with other print (2)

**896**

**Matthew Henderson** etching  
25 x 15.5cm together with Reginald Barker  
etching (2)

**897**

**Unframed C19th Hand Coloured Book-plate** Tawny Owl, 18 x 11cm

**898**

**P Lee - Boer War Solider on Horseback**  
hand coloured print - 28 x 37.5cm

**899**

**Six Framed Sporting & Cock Prints**

**900**

**Seven Framed Sporting & Cock Fighting Prints**

**901**

**Six Framed Sporting & Cockfighting Prints**

**902**

**Pair Late Victorian Sepia Portrait Photographs** together with portrait pencil sketch (3)

**903**

**Pair Late C19th Sporting Prints - The Meet & Run to Earth** 15 x 21cm each

**904**

**Five Late C19th Sporting Prints** of sizes

**905**

**Lithograph of Her Majesty the Queen**  
after Chalon, 54 x 39cm

**906**

**Frederic M Bell-Smith - Canadian Mountain Scene** watercolour, signed, 48 x 32cm

**907**

**John Gidudale - The Eugenic Hills From The Lido Venice**, watercolour  
24 x 53cm

**908**

**Style of Miles Birket Foster - Rustic English Landscape with Children**  
watercolour 36 x 26cm in ornate gilt frame

**909**

**E T Martin - Water Reflections (1917)**  
oil on board, 24 x 16.5cm

**910**

**C20th European, Levi - Hens in Courtyard**  
oil on board, 29 x 23cm  
together with other oil, Racehorse with Trainer (2)

**911**

**Early C20th European - Fishing Fleet in Calm Waters**, oil on canvas in original gilt frame, 21.5 x 52cm

**912**

**B A Branfill - Portrait of Elsie (1896)**  
pastel on paper, 35 x 29cm (oval)

**913**

**Set of 13 Cries of London Engravings**  
after F Wheatley

**914**

**J A Bond - Waka of Wanganui River**  
pastel on paper, 48 x 33cm

**915**

**C19th British (Bertram ?) - Rustic Country Landscape** oil on canvas in original gilt frame  
16.5 x 34cm

**916**

**Manner of S L Thompson - Bridge of Remembrance** oil on board, 29 x 32cm

**917**

**H Linley Richardson- The Old English Countryman Reads the War News**  
drypoint etching

**918**

**William Swainson - Study of Two Birds**  
pencil sketch, 25 x 18.5cm together with a book plate print of a bird (2)

**919**

**Two Antique Framed Marriage Certificates**  
c1820s

**920**

**Bookplate - The First Interview 1786**  
From Old & New Edinburgh, 22 x 14cm

**921**

**Three Japanese Woodblock Prints**  
23 x 18cm each

**922**

**Pair Reverse Painted on Glass Floral Studies** 39 x 29cm  
\$200 - \$300

**923**

**Kathleen Peake - Study of Naval Gent**  
watercolour, 39 x 25.5cm together with two other watercolours & print (4)

**924**

**Pair Snaffles Signed Prints** Peshawar Vale & The Panee together with other Colonial photograph (3)

**925**

**Archibald Thorburn - Grouse in Flight**  
engraving, 17 x 27cm

**926**

**Pair Early C20th Japanese - Landscapes**  
watercolours, signed 'Vitta' 49 x 15cm each

927

**Pair Victorian Botanical Studies on Velvet**  
in original maple frames, 25 x 20cm each

928

**Victorian Needlework - Portrait of Young Boy** in various hand craft mediums  
59 x 61cm

929

**Collection Early C18th William Hogarth Engravings** both full and cut plates  
\$1,000 - \$1,500

930

**Pair European Watercolour Landscapes**  
17 x 43cm each

931

**Early C20th European - Trapper in Winter Landscape**, oil on board, signed indistinctly  
29.5 x 19.5cm  
together with other print (2)

932

**C19th Dickensian Portrait**  
together with other print & needlework (3)

## FURNITURE

933

**C19th French Mahogany Haberdashery Work Table** oblong three tier form with brass column supports  
\$1,000 - \$1,500

934

**Set of Eight C19th Lancashire Fruit Wood Dining Chairs** with shell inlaid top rails, traditional double row of vertical spindles, calico seats on turned legs and stretchers, comprising two carvers and six single  
\$1,000 - \$2,000

935

**Victorian Mahogany D-end Extension Dining Table** on fluted tapering legs with original white ceramic castors, two additional leaves, seating eight (no winder)  
\$800 - \$1,500

936

**Victorian Burr Walnut Polescreen** the large tapestry banner depicting an interior with romantic couple on tripod stand  
\$200 - \$300

937

**Victorian Tapestry Panel** depicting two Persian nobles receiving a subject

938

**Pair of C19th Walnut Framed Armchairs** the downswept arms with acanthus leaf tops and terminals on baluster turned supports and stretchers, upholstered in gros point tapestry, the backs decorated with griffons  
\$1,000 - \$1,500

939

**Pair of Marcel Breuer designed Wassily Chairs by Knoll** black leather and tubular chromed steel c1960's  
\$1,000 - \$1,500

940

**Japan Expo 1970 Swivel Chair by Michael Payne** shaped plywood frame, upholstered in button back black leather on chromed x-form base with ball feet  
\$700 - \$1,000

941

**Geo III Scottish Mahogany Longcase Clock** by John Hislop of Peebles with broken swan neck pediment, arched painted dial with Roman numerals, subsidiary second and calendar dials and fluted columns to the trunk  
\$1,000 - \$1,500

942

**Geo III Mahogany and Marquetry Longcase Clock** by C. Wrapson of Midhurst, with broken swan neck pediment, arched painted dial with Arabic numerals, subsidiary second and calendar dials, the hood and trunk with brass mounted Corinthian Columns  
\$1,000 - \$1,500

943

**C19th French Papier Mache Fire Screen** arched concave shape painted with a central landscape panel flanked by vases of flowers with original patent label to the back (a/f)

944

**Geo III Mahogany Circular Snap Top Super Table** with gun barrel and spiral fluted column on tripod scroll legs  
\$1,000 - \$1,500

945

**Victorian Specimen Wood Circular Snap Top Wine Table** on acanthus carved column, tripod scroll feet  
\$400 - \$600

946

**C19th Camphorwood Two Stage Secretaire Campaign Chest** central desk drawer with fall front writing surface, flanked by one deep and two small drawers, two short and two long drawers below on turned feet with folding brass handles  
\$2,500 - \$3,500

947

**C19th French Ormolu and Sevres Style Porcelain Mantel Clock** portrait to the top with floral swag supports, the face with surround of painted panels of florals, cherubs and portraits, on velvet and giltwood stand  
\$600 - \$1,000



941



942





940

**948**  
**Victorian Rosewood and Brass Inlaid Decanter Box** of serpentine outline, the folding hinged lid revealing an interior with four square cut decanters and a selection of small glasses  
\$300 - \$500

**949**  
**Victorian Walnut Revolving Piano Stool** with green buttoned leather top, the finely carved base with three scroll supports and paw feet  
\$300 - \$500

**950**  
**NZ Arts and Crafts Rimu Circular Occasional Table** on bobbin turned column with three supports  
\$200 - \$300

**951**  
**Geo III Mahogany Circular Snap Top Supper Table** with birdcage action, baluster column support and tripod legs  
\$800 - \$1,200

**952**  
**Victorian Stained Beech Single Chair** with orb finials to the top, baluster turned vertical spindles on turned legs and stretchers

**953**  
**Hepplewhite Period Mahogany Dining Chair** with traditional wheat sheaf splat wide bowed seat on square chamfered and fluted tapering legs joined by an H-stretcher  
\$200 - \$300

**954**  
**Early C18th Oak Oval Gateleg WakeTable** of traditional form with baluster turned legs and stretchers  
\$3,500 - \$5,000



939

**955**  
**C19th Pine Box** with steel carrying handle, hinges and lock plate  
\$200 - \$300

**956**  
**Pair of Large Victorian Brass Ecclesiastical Candlesticks** with wide circular sconces, fluted tapering columns and stylised dolphin bases  
\$200 - \$300

**957**  
**Victorian Mahogany Shop Display Cabinet** with mirrored door to the back  
\$300 - \$500

**958**  
**Geo III Country Made Oak Wall Cabinet** with fixed single shelf enclosed by a panel door  
\$300 - \$500

**959**  
**Geo III Mahogany Swing Toilet Mirror** the upright oblong mirror with gilded border and original silver plate, the serpentine platform base with three drawers on ogee bracket feet  
\$300 - \$500

**960**  
**C19th European Walnut and Ebonised Collectors Cabinet on Stand** the glazed door with fretwork corners on barley twist legs and stretchers  
\$400 - \$600

**961**  
**Abraham (Abbey) Altson (1866 - 1949)**  
Angela  
oil on canvas, signed lower left in original ornate gilt frame with picture light  
60 x 49 cm  
\$2,000 - \$4,000

**962**  
**Geo II Oak Chest on Stand** with two short and three long drawers to the top, the base with three small drawers, shaped apron on cabriole legs  
\$1,500 - \$2,500

**963**  
**C19th Biedermeier Mahogany Linen Press** arched cornice inlaid with brass lyre, the door with arched brass inlaid top panel, faux fall front and drawers below on block feet  
\$800 - \$1,500

**964**  
**Chinese Elm Open Elbow Chair** with yoke top rail, solid waved splat with carved roundel on plain legs and stretchers  
\$300 - \$500

**965**  
**Pair of Chinese Elm and Red Lacquer Side Tables** square shaped with plain legs and stretchers  
\$300 - \$500

**966**  
**Antique Chinese Coopers Wooden Barrel** with fixed handle  
\$300 - \$500

**967**  
**Japanese Ebonised Four Panel Folding Screen** decorated with a continuous landscape  
\$300 - \$500

**968**  
**Chiron Vintage Chrome Optometrists Light**  
\$200 - \$400

**969**  
**Victorian Gilt Framed Oval Wall Mirror** with floral and scroll decorated surround





1026



1020



1035



984



996



946



973

**970**  
**Small Florentine Style Giltwood Mirror**  
oblong shape with traditional scrolling surround

**971**  
**Regency Giltwood Framed Oval Wall Mirror**  
with floral and scroll cresting and original silvered plate

**972**  
**C19th Dutch Oak Wall Clock** the hood with gilded atlas and muse figural mounts, painted dial with Roman and Arabic numerals and gilded figural spandrels, and pierced and embossed pendulum cover  
\$350 - \$500

**973**  
**Fine C18th Flemish Vargueno Cabinet on Stand** the central tabernacle with mirrored interior, the door with parquetry inlays to the back, the front with a gilded classical figure to the centre, numerous drawers with floral marquetry facias, the later stand with gilt mounted barley twist walnut legs and coromandelwood base  
\$10,000 - \$15,000





947



972



999



960



993



975



992



961

- 974**  
**Regency Mahogany Oblong Snap Top Wine Table** on tapering ringed baluster column and fluted scroll legs  
\$400 - \$600
- 975**  
**C19th Boule Centre Table** of quatrefoil outline traditional red tortoiseshell with ornate brass inlays, the cabriole legs with ormolu carytids (for restoration)  
\$500 - \$1,000
- 976**  
**Elm and Beech Windsor Chair** with three pierced vertical splats on baluster legs and stretchers  
\$200 - \$300
- 977**  
**C19th Mahogany Regence Armchair** with scrolling arm supports on cabriole legs  
\$200 - \$400
- 978**  
**Victorian Burr Walnut Davenport** hinged stationery compartment with pierced brass gallery, birds eye maple interior with four drawers enclosed by a panel door to one side, turned column supports on bun feet  
\$500 - \$800
- 979**  
**Victorian Burr Walnut Oval Snap Top Loo Table** on tapering leaf carved column and four floral carved scroll legs  
\$500 - \$800
- 980**  
**Pair Victorian Balloon Back Dining Chairs** with leaf and scroll carved top rails and splats on cabriole legs
- 981**  
**Pair Regency Simulated Rosewood Side Chairs** with scroll moulded horizontal splats, rush seats on turned legs and stretchers
- 982**  
**Small C17th Oak Blanket Box** of plain form with hinged lid on bracket feet  
\$350 - \$500
- 983**  
**Geo III Oak Blanket Box** with hinged lid, steel carrying handles and box base  
\$350 - \$500
- 984**  
**Geo III Mahogany Bureau** the fall front revealing a fitted interior of small drawers, central cupboard and pigeonholes, four long graduated cockbeaded drawers below on ogee bracket feet  
\$800 - \$1,500
- 985**  
**Pair of Brass Candlestick Lamps (and other)** with central knop and pierced bases together with another brass lamp
- 986**  
**William IV Rosewood Chiffonier** upper shelf with tapering column supports, frieze drawer, cupboard below enclosed by two arched panel doors, within fluted and acanthus decorated columns on bun feet  
\$400 - \$600
- 987**  
**Bohemian Glass Kerosene Lamp** with shaped circular reservoir, tapering column on square marble base  
\$200 - \$300
- 988**  
**Victorian Ceramic Kerosene Lamp** with opalescent shade on scrolling cast iron base  
\$200 - \$300
- 989**  
**Victorian Brass Corinthian Column Kerosene Lamp** with floral painted opaque glass shade and clear glass reservoir  
\$200 - \$300
- 990**  
**Regency Rosewood Dressing Stool** with upholstered oblong top, lyre shaped supports joined by a turned stretcher on lion's paw feet  
\$350 - \$500
- 991**  
**Arts and Crafts Beech Hall Bench** with slatted top and under tier, square chamfered legs and brass castors  
\$300 - \$500
- 992**  
**C19th Boule Breakfront Credenza** of traditional design with central door flanked by bowed display cabinet doors (one cracked) the whole with ormolu mounts  
\$1,000 - \$2,000
- 993**  
**De Andreis, A Cavalier in an Interior** oil on canvas, signed lower right in original ornate gilt frame with picture light to the top, 79 x 99cm  
\$500 - \$1,000
- 994**  
**French Empire Period Mahogany Swing Toilet Mirror** with oval plate, platform base with long drawer  
\$200 - \$300
- 995**  
**Regency Mahogany Swing Toilet Mirror** with oval plate, serpentine platform base with three drawers  
\$200 - \$300
- 996**  
**Geo III Oak and Mahogany Crossbanded Flat Front Chest** of two short and three long graduated cock beaded drawers on bracket feet  
\$800 - \$1,200
- 997**  
**Victorian Gilt Framed Wall Mirror** with original silvered plate
- 998**  
**Pair of Gilded Wrought Metal Table Lamps** leaf and flower head design  
\$200 - \$300
- 999**  
**Mahogany and Rewa Rewa Collectors Cabinet** moulded cornice with floral carved mount, two shelf enclosed by a glazed door  
\$300 - \$500
- 1000**  
**Victorian Painted Pine Flat Front Chest** by Deuce & Co, London, Aesthetic Revival with two short and three long drawers on bracket feet, original makers label to top drawer  
\$800 - \$1,200
- 1001**  
**Late Victorian Stripped Pine Hutch Dresser** the top with two glazed astragal doors, the base with two drawers and cupboard below  
\$500 - \$800
- 1002**  
**Set of Four Victorian Rosewood Dining Chairs** with trefoil top rails, pierced scrolling horizontal splats on cabriole legs  
\$250 - \$500
- 1003**  
**William IV Rosewood Circular Top Breakfast Table** on hexagonal baluster column and concave platform base with lobed feet  
\$500 - \$800
- 1004**  
**Geo III Mahogany Tray Top Bedside Cabinet** with shaped and pierce gallery top single panel door on square legs  
\$300 - \$500
- 1005**  
**Geo III Mahogany Tray Top Bedside Cabinet** with shaped and pierced gallery top, single panel door on square legs  
\$300 - \$500
- 1006**  
**Early C18th Oak Coffe** of traditional form, the front panels carved with lozenges and rosettes  
\$700 - \$1,000
- 1007**  
**C19th Giltwood Oval Wall Mirror** with ribbon cresting  
\$200 - \$300
- 1008**  
**Circular Giltwood Wall Mirror** with musical trophy cresting





990



982 / 983



1041



974



945



1014



1005 / 1004



1023



1015



958



975



978

**1009**

**Victorian Walnut Knee-hole Desk** the top with inset leather writing surface, three frieze drawers, a further three drawers to each pedestal on box bases  
\$400 - \$800

**1010**

**Antique Giltwood Sunburst Wall Clock**  
gilded dial with Arabic numerals  
\$200 - \$400

**1011**

**Geo III Mahogany Longcase Clock** by Garland (?) of Sunderland, the hood with three brass orb finials, arched painted dial with hunting and landscape panels, Roman numerals and satinwood crossbanded case  
\$700 - \$1,000

**1012**

**Geo III Oak Circular Snap Top Wine Table**  
on vase shaped column and tripod legs  
\$350 - \$500

**1013**

**Late Victorian Three Piece Parlour Suite**  
comprising two seat sofa and two tub chairs upholstered in cream velvet  
\$350 - \$500

**1014**

**Geo III Oak Circular Snap Top Wine Table**  
on tapering ringed column and tripod base  
\$350 - \$500

**1015**

**Geo III Oak Oblong Side Table** three small drawers on square tapering legs  
\$400 - \$600

**1016**

**Antique Quaker Style Rocking Chair** with simple stick back design  
\$200 - \$300

**1017**

**Victorian Mahogany Circular Snap Top Breakfast Table** on bulbous column support and scroll legs  
\$350 - \$500

**1018**

**Regency Mahogany Pembroke Table** on ringed tapering legs  
\$300 - \$500

**1019**

**Large Victorian Mahogany Swing Toilet Mirror** upright oblong plate, within tapering fluted column supports, the shaped platform base with central lidded compartment  
\$200 - \$300

**1020**

**Regency Mahogany Bowfront Chest** of two short and three long graduated cockbeaded drawers on turned feet  
\$800 - \$1,200

**1021**

**Geo III Elm and Beech Windsor Chair**  
traditional stick back form on turned legs and stretchers  
\$300 - \$500

**1022**

**Victorian Elm and Deal Country Kitchen Stick Back Chair**  
\$200 - \$300

**1023**

**C19th Pine and Simulated Bamboo Writing Table** with inset green leather writing surface and long frieze drawer  
\$600 - \$1,000

**1024**

**Victorian Burr Walnut Oval Snap Top Loo Table** with ebony and amboyna crossbanding on cathedral pillar base with acanthus leaf feet  
\$700 - \$1,200

**1025**

**Geo III Oak Hanging Corner Cupboard**  
fixed shelving enclosed by a raised and fielded panel door  
\$300 - \$500

**1026**

**Regency Mahogany Bowfront Chest** of neat proportions with two short and two long cockbeaded drawers on splayed bracket feet  
\$350 - \$500

**1027**

**Set of C19th Steel Fire Irons, Dogs and Fender** comprising shovel, tongs and poker with orb finials, hoof feet andirons and pierced steel and brass fender with lion's paw feet  
\$250 - \$350

**1028**

**Gubi Antique Brass Randiccio Circular Mirror** designed by Gio Ponti c1925, 60cm dia  
\$300 - \$500

**1029**

**Gilt Framed Wall Mirror** oblong shaped with three plates

**1030**

**Cutler Oak Rolltop Desk**  
\$800 - \$1,500

**1031**

**Brass Fender, Fire irons, Boot Scraper and Coal Helmet** Victorian pierced brass fender, coal shovel and brush, andirons, copper helmet and dragon form boot scraper

**1032**

**Globe Wernicke Oak Stacking Bookcase**  
seven tier with traditional up and over glazed doors  
\$800 - \$1,500

**1033**

**Vintage Murano Glass Chandelier** with opalescent scrolling branches and flower heads (disassembled)  
\$500 - \$800

**1034**

**C19th Slender Pine Kitchen Cabinet** with four drawers, cupboard below on bracket feet  
\$350 - \$500

**1035**

**Geo III Mahogany Bureau** of neat proportions, fall front, fitted interior, four long graduated drawers on bracket feet  
\$600 - \$1,000

**1036**

**Pair of Antique Chimneypots and Other**  
square tapering with shaped castellated tops and smaller example

**1037**

**Victorian Walnut Cot** with orb finials and spindle sides

**1038**

**Victorian Mahogany Extension Dining Table and Five Chairs** with tapering fluted legs, one additional leaf together with five various Victorian kitchen chairs  
\$600 - \$1,000

**1039**

**Thom & Camerons Pub Mirror** oak framed with gilded lettering and bevelled edge  
\$500 - \$800

**1040**

**Victorian Walnut Music Cabinet** single glazed door with fretwork border, brass cup handles  
\$200 - \$300

**1041**

**Set of Four Edwardian Mahogany Chippendale Style Dining Chairs** with pierced vase shaped slats, drop in seats on acanthus top cabriole legs with ball and claw feet  
\$200 - \$400

**1042**

**C18th Oak Oval Gateleg Dining Table** with drawer to each end on baluster legs joined by plain stretchers  
\$400 - \$600

**1043**

**Rare NZ Rewa Rewa Rustic Pig Bench**  
planked oblong top on three simple legs  
\$600 - \$1,000



938



1053



1044



1053



979



933



1024



1006





1052



962



963



1055





1048

**1044**  
**Fine Geo III Mahogany and Satinwood Crossbanded Rent Table** with real and faux drawers on baluster ringed column circular platform base and four scrolling sabre legs with brass hairy lions paw feet and castors  
 \$1,500 - \$2,500

**1045**  
**Victorian Walnut Circular Snap Top Break-fast Table** on bulbous column support and scroll legs  
 \$300 - \$500

**1046**  
**Victorian Walnut Prie-dieu** with shell and scroll cresting and barley twist uprights and legs

**1047**  
**The Atkins Chest - NZ Colonial Rewa Rewa Secretaire Chest** fall front writing surface revealing an interior with open recess and four small drawers, eight drawers below on box base  
 This desk was made for the Atkins family of Auckland in the 1890s - believed to be 1896. The Atkins family was a wealthy family with interests in the red meat industry in the Northland/Auckland area. This desk was one of three bespoke pieces commissioned by the family at that time. The pieces were separated in the early 2000s when this piece was purchased. It is unusual to find such large pieces of furniture made from Rewa Rewa  
 \$1,000 - \$1,500

**1048**  
**Large C19th Japanese Hardwood Shodana** the mount with a central figure of a seated sage and winged bird, small cupboards enclosed by gilded doors applied in ivory and mother of pearl with figures birds and blossom, the base with pierce decorative panels of birds and blossom (some faults)  
 \$1,500 - \$2,500

**1049**  
**Large Pair of Antique Vietnamese Wooden Doors and Surround** the doors applied with rows of iron floral rosettes  
 \$400 - \$800

**1050**  
**Pietra Dura Octagonal Table Top** the white marble with inlaid border and centre of flower heads and leaves  
 \$1,000 - \$1,500

**1051**  
**Edwardian Mahogany Chinese Chippendale Style Wall Mirror** with dentil cornice, blind fretted frieze, the open shelves with pierced galleries, quadruple column supports with urn finials  
 \$250 - \$500



1050

**1052**  
**Waring & Gills Mahogany and Inlaid Wedge Shaped Display Cabinet** with moulded cornice, serpentine shelves enclosed by glazed astragal doors, cupboard below on square tapering legs on block feet joined by a shaped undertier  
 \$1,000 - \$1,500

**1053**  
**C18th Style Irish Oak Wake Table** traditional oval gateleg form on baluster turned legs joined by plain stretchers  
 \$2,500 - \$3,500

**1054**  
**Composed Set of Four Late Victorian Oak Dining Chairs** in the Elizabethan style with central grape and vine decorated splats, barley twist uprights and stretchers  
 \$300 - \$500

**1055**  
**Geo III Oak Kitchen Dresser** with moulded cornice, open plated shelves flanked by slender cupboards, the base with cupboards including secret drawers enclosed by four panel doors, two mahogany crossbanded drawers below on ogee bracket feet  
 \$1,500 - \$2,500

**1056**  
**Large Isphahan Style Woollen Rug** with floral filled field in red, blue and green on an ivory ground, wool on cotton 400 x 300 cm (approx)  
 \$500 - \$800





# **Estate Doll Collection of Cynthia & John Wright**

**Thursday 21 May - 12noon start**

**Lot 1060 - 1385**

**All bisque dolls with open mouth and teeth, on composition bodies variations noted in lot description.**

**Damage to bisque heads where noticed is catalogued, any body damage i.e. missing fingers etc is not mentioned. Buyers must ascertain this for themselves or by asking a staff member.**

**All dolls wearing appropriate clothing of fine quality and good condition. Antique or original dress is noted in lot description.**

**Please note the estimates given are purely a guideline for prospective buyers and the majority of the collection is to be offered at no reserve.**

**1060**

C E Kling & Co Bisque Doll  
blue eyes, brown mohair wig on jointed body 28cm  
marked Germany K 1 11/0 D ?  
\$75 - \$150

**1061**

German Bisque Doll  
blue stationary eyes, blonde mohair wig on composition body 28cm  
marked X wearing original cotton dress  
\$75 - \$150

**1062**

Schoenau & Hoffmeister Bisque Shoulder Plate Doll  
blue stationary eyes, light brown mohair wig on leather & rag body with bisque hands 28cm  
marked S PB H 12  
\$75 - \$150

**1063**

Armand Marseille Bisque Doll  
brown eyes dark brown hair wig on jointed body 34cm  
marked 1894 A M 2/0 DEP Made in Germany  
\$80 - \$150

**1064**

Schoenau & Hoffmeister Bisque Doll  
brown eyes with lashes brown mohair wig on ball jointed body 37cm  
marked S PB H 1909 2/0 Germany  
\$75 - \$150

**1065**

'Moirá' Simon & Habig 1249 Santa Bisque Doll  
brown eyes, santa mark to lip with top row of teeth, brown mohair wig on jointed body 38cm  
marked S & H 1249 DEP Germany 4 1/2  
\$150 - \$300

**1066**

Theodor Recknagel Bisque Doll  
brown eyes, two top teeth blonde mohair wig on jointed body 34cm  
marked R 86 A 4/0 wearing antique outfit and undergarments  
\$150 - \$300

**1067**

Armand Marseille Bisque Dream Baby  
blue sleeping eyes open mouth with two bottom teeth, 5pce body 23cm  
marked A M Germany 351/2/0K  
\$100 - \$200

**1068**

Armand Marseille Bisque Dream Baby  
blue sleeping eyes closed mouth, 5pce body 23cm  
marked A M Germany 341/4/0K  
\$100 - \$200

**1069**

Possible Kestner Bisque Bye Lo Character Baby  
blue sleeping eyes closed mouth with brown mohair wig on 5pce all bisque body 20cm  
marked 16 over 20  
\$200 - \$400

**1070**

Armand Marseille Black Bisque Character Baby  
brown stationary eyes pierced ears on 5pce bent limb body 23cm  
marked AM Germany 362/0K  
\$150 - \$300

**1071**

Armand Marseille Bisque Character Baby  
moulded and painted features with closed mouth on 5pce body 24cm  
marked 500 Germany DRGM A 3/0 M  
\$150 - \$300

**1072**

German Bisque Solid Dome Character Baby Doll  
all painted and moulded features closed mouth on 5pce bent limb body 24cm  
marked 0 Germany 74  
\$100 - \$200

**1073**

Simon & Halbig Bisque 'Kaiser' Character Baby Doll  
all painted features with open/closed mouth, 5pce body 23cm  
marked Germany 610 9/0  
\$200 - \$300

**1074**

Theodor Recknagel Bisque Solid Dome Character Baby  
all moulded features with blue bonnet on 5pce bent limb body 19cm  
marked R A 28 - 12/0  
\$100 - \$200

**1075**

Theodor Recknagel Bisque Solid Dome Character Baby  
all moulded features with blue bonnet on 5pce bent limb body 19cm seated on miniature Windsor chair  
marked 22 - 12/0  
\$150 - \$250

**1076**

Gebrüder Heubach Bisque Character 'Baby Stuart' Doll  
painted features with moulded bonnet head on 5pce bent limb body 20cm  
marked 2/0 monogram Germany  
\$200 - \$400

**1077**

Gebrüder Knoch Solid Dome Bisque Shoulder Plate Character Baby Doll  
all moulded painted features open/closed mouth on rag body with composition lower limbs 44cm  
marked crossed bones Made in Germany ges No 4056/0 A wearing antique christening gown  
\$300 - \$600

**1078**

German Solid Dome Bisque Shoulder Plate Character Baby Doll  
all moulded painted features open/closed mouth with two bottom teeth on rag body with bisque lower limbs 42cm wearing antique christening gown  
marked Made in Germany Ges No 9.16 Gesch 8/0  
\$300 - \$600

**1079**

Gebrüder Heubach Bisque Shoulder Plate Character Boy Doll  
moulded and painted features with open/closed mouth on leather body with bisque hands 43cm  
marked 6 monogram DEP Germany  
\$400 - \$800

**1080**

Franz Schmidt Bisque Character Toddler Doll  
blue sleeping eyes open mouth with two top teeth and trembling tongue, pierced nostrils on chubby ball jointed body 36cm  
marked F S & Co 1272 / 35 Z Deponiert with original cotton shirt and pants  
\$500 - \$1,000

**1081**

'William' Adolf Wislizenus Solid Dome Bisque Character Toddler Boy Doll  
all moulded & painted features with open/closed mouth and two top teeth on jointed chubby body 30cm  
marked 110  
\$400 - \$800





1082



1137



1084



1141



1136



1138



1139



1140



1088

**1082**

'Mimi' Jules Steiner French Bisque 'Bebe Gigoteur' Doll  
solid domed bisque head with stationary blue eyes, pierced ears original blonde mohair wig  
carton torso containing clockwork mechanism, composition arms and lower legs, kid-over-metal-covered hinged hips. When wound, the doll waves its arms and turns its head side to side and cries 'mama' 40cm  
Unmarked head C1885  
\$1,500 - \$2,500

**1083**

Carl Bergner Three Face Character Bisque Doll  
crying, happy and sleeping faces turned by rod on top of papier mache head hood, painted features with blue stationary eyes and blonde hair fringe on cloth covered card, composition limb body with working pull-string crier voice box 28cm  
composition shoulder plate marked C B  
\$500 - \$1,000

**1084**

Bru Bisque Doll  
flecked blue stationary paperweight glass eyes, closed mouth pierced ears with blonde mohair wig over cork pate on French jointed body 34cm  
marked BRU . JNER 3 C1891 (4th generation)  
\$3,000 - \$6,000

**1085**

'Fiona-Jane' Konig & Wernicke Bisque Toddler Doll  
brown eyes with lashes, open mouth with two top teeth and trembling tongue, brown hair wig on 5pce bent limb body 69cm  
marked K&W 1070 15 Made in Germany  
\$300 - \$600

**1086**

'Rose' Simon & Halbig Bisque Doll  
blue sleeping eyes, original light brown mohair wig, pierced ears on ball jointed body 57cm  
marked Germany Heinrich Handwerck Simon & Halbig 3  
\$300 - \$600

**1087**

'Kate' J D Kestner Bisque Doll  
brown sleeping eyes, original light brown mohair wig, pierced ears on ball jointed body 60cm  
marked 192 over 11  
\$300 - \$600

**1088**

'Kitty' Simon & Halbig Bisque Doll  
blue sleeping eyes, original light brown mohair wig, pierced ears on ball jointed body 61cm  
marked Handrich Handwerck Simon & Halbig 4  
\$400 - \$600

**1089**

'Gipsy' Simon & Halbig Bisque Doll  
blue eyes blonde mohair wig, pierced ears on ball jointed body 55cm  
marked Simon & Halbig K\*R 55 dressed in gypsy costume  
\$400 - \$600

**1090**

'Juliet' Simon & Halbig Bisque Doll  
brown sleeping eyes with lashes, original blonde mohair wig on ball jointed body 56cm  
marked 550 Germany Simon & Halbig S & H  
\$200 - \$400

**1091**

'Margaret' Possible J D Kester Bisque Doll  
blue sleeping eyes pierced ears with original light brown mohair wig on walking composition body with voice box (head not turning) 55cm  
marked 5, wearing vintage costume  
\$400 - \$800

**1092**

Ernst Heubach Bisque Shoulder Plate Doll  
blue stationary eyes, light brown real hair wig on leather body with bisque hands 56cm  
marked Made in Germany Horse-Shoe Hch la...  
\$150 - \$300

**1093**

SFBJ Bisque Doll  
blue eyes dark brown hair wig on jointed French body 41cm  
marked 21 SFBJ 60 Paris O wearing vintage dress and undergarments  
\$100 - \$200

**1094**

J D Kestner Bisque Shoulder Plate Doll  
brown eyes dark brown nylon wig on leather body with bisque hands 44cm  
marked 7. over 148  
\$100 - \$200

**1095**

'Lucinda' Possible J D Kester Pouty Face Bisque Shoulder Plate Doll  
stationary blue eyes, closed mouth with new blonde mohair wig on jointed leather body with bisque hands 63cm  
marked 12  
\$600 - \$1,000

**1096**

Possible Kley & Hahn Bisque Shoulder Plate Doll  
brown stationary eyes open/closed mouth with dome head short mohair wig on jointed kid leather body with bisque hands 39cm  
marked 166 - 6 with some antique costume  
\$300 - \$600

**1097**

Possible Kling Bisque Shoulder Plate Character Doll  
all painted and moulded features with sculptured blonde hair leather body with bisque hands 44cm  
marked 199  
\$200 - \$400

**1098**

'Coquette' Gebruder Heubach Bisque Character Doll  
socket head with all moulded and painted features on jointed body 50cm  
marked with impressed monogram Germany  
\$500 - \$800

**1099**

Bisque Shoulder Plate Doll  
brown stationary eyes, closed mouth with chin dimple moulded blonde hair with black hair band on kid leather jointed body 45cm  
marked 193 - 6  
\$400 - \$800

**1100**

De Fuisseaux Bisque Shoulder Plate Character Lady Doll  
all painted and moulded features, original light brown mohair wig on rag body with bisque hands 44cm  
Marked F. 3. c1910 - 1915 wearing original national costume (showing wearing)  
\$400 - \$800

**1101**

De Fuisseaux Bisque Character Doll  
all painted moulded features, closed mouth dark brown mohair wig on bent/straight limb 5pce body 23cm (repair to right moulded shoe foot)  
marked D. F. G.  
Belgium C1910  
\$200 - \$400

**1102**

Limoges Bisque National Costume Lady Doll  
brown stationary eyes open/closed mouth with teeth brown mohair wig on jointed/straight limb composition 'lady' body 44cm  
marked J E Masson SC Lorraine No0 AL&Co  
Limoges with original costume  
\$300 - \$600

**1103**

SFBJ All Composition National Costume Doll  
grey sleeping eyes blonde mohair wig on straight limp 5pce body 32cm  
marked SFBJ Paris 1 with original French Breton costume  
\$100 - \$250

**1104**

Gaultier Bisque Shoulder Plate Fashion Doll  
all painted features pierced ears with blonde mohair wig over cock pate on leather and cloth body 30cm  
marked F O G  
\$400 - \$800



1077



1078



1079



1107



1108



1109



1142



1112



1080



1149



1148



**1105**

Belton Type Bisque Shoulder Plate Doll  
blue stationary eyes closed mouth, solid  
dome head with blonde mohair wig on kid  
leather jointed body with bisque hands 31cm  
unmarked  
\$300 - \$600

**1106**

Armand Marseille Bisque Shoulder Plate  
Character Boy Doll  
all moulded painted features with light brown  
mohair wig on jointed leatherette body with  
composition lower limbs 48cm  
marked 640 A 3 M Germany  
\$300 - \$500

**1107**

German Solid Dome Bisque Character Baby  
Doll  
all moulded and painted features on 5pce  
bent limb body 40cm  
marked 12  
\$400 - \$800

**1108**

German Solid Dome Bisque Character Baby  
Doll  
all moulded and painted features on 5pce  
bent limb body 36cm  
marked 7 Germany wearing antique christen-  
ing gown  
\$350 - \$600

**1109**

Kestner Crying Bisque Character Baby  
tiny blue stationary eyes, open crying mouth  
on Grace Story Putman cloth body with cellu-  
loid hands 34cm  
marked 255 2 O.I.C. Made in Germany  
\$400 - \$800

**1110**

Krammer & Reinhardt 126 Character Doll  
brown sleeping & flirty eyes, open mouth  
with trembling tongue and two top teeth  
light brown hair wig on ball jointed body  
40cm  
marked K \* R Simon & Halbig Germany 126  
\$400 - \$800

**1111**

'Bobby' Krammer & Reinhardt 126 Character  
Doll  
brown eyes, open mouth with trembling  
tongue two top teeth, light brown mohair  
wig on 5pce bent limb body 33cm  
marked K\*R Simon & Halbig 126  
\$300 - \$500

**1112**

Kley & Hahn Bisque Character Baby Doll  
brown eyes with lashes open/closed mouth  
with two top teeth brown mohair wig on  
5pce bent limb body with thumb sucking  
hands 32cm  
marked K & H 167-1  
\$200 - \$300

**1114**

J D Kestner Bisque Solid Dome Character  
Boy Doll  
painted features on composition clockwork  
walking body 21cm  
marked Germany 178 3/0 wearing original  
cotton chemise  
\$100 - \$200

**1115**

Armand Marseille All Brown Composition  
Character Doll  
all painted features, flange head on 'squeeze  
box' sitting body the mechanism raises the  
arms with bells attached 12cm seated height  
marked A M German 351... with original  
earring rings and costume  
(repair to neck back)  
\$100 - \$150

**1116**

Ernst Heubach Brown All Composition  
Character Baby  
stationary eyes closed mouth on 5pce bent  
limb body 19cm  
marked Heubach Koppelsdorf 399 16/0  
Germany  
\$100 - \$200

**1117**

Armand Marseille Brown Bisque Dream Baby  
Character Doll  
brown sleeping eyes closed mouth on  
straight/bent limb body 26cm  
marked A M Germany 341/OK  
\$150 - \$300

**1118**

Possible Cuno & Otto Dressel Bisque  
Shoulder Plate Character Boy  
blue stationary eyes closed mouth with  
moulded head applied real hair flock on rag  
body with trade mark 'Poppy Doll' stamp  
26cm  
marked 14/0  
\$200 - \$400

**1119**

German Bisque 'American School Boy'  
Character Shoulder Plate Doll  
brown stationary eyes closed mouth brown  
painted hair on rag body with composition  
hands 26cm  
marked 15 or 16/0?  
\$100 - \$150

**1120**

German Solid Dome Bisque Character Baby  
Doll  
blue eyes closed mouth on 5pce bent limb  
body 21cm  
marked Germany 8/0  
\$50 - \$100

**1121**

German Bisque Character Baby Doll  
blue sleeping eyes, blonde mohair wig on  
5pce bent limb body 18cm  
marked 4 over circle square Germany wear-  
ing original cotton chemise  
\$75 - \$150

**1122**

German Solid Dome Bisque Character Baby  
Doll  
all painted moulded features with open  
mouth on 5pce bent limb body 18cm  
marked 3-4/0  
\$75 - \$150

**1123**

Armand Marseille Bisque Dream Baby  
dark pupiless eyes, open mouth with two  
bottom teeth on 5pce bent limb body 18cm  
marked AM Germany 351 / 7/0  
\$50 - \$100

**1124**

J D Kestner Solid Dome Bisque Character  
Baby Doll  
all painted features on 5pce bent limb body  
17cm  
marked Germany 243 2/0  
\$50 - \$100

**1125**

Nippon Bisque Character Toddler Doll  
all moulded features and hair on 5pce bent  
limb body 24cm  
marked NIPPON  
\$40 - \$80

**1126**

Two Theodor Recknagel Bisque Baby Dolls  
solid dome heads painted features on rag  
bodies 15cm in wooden cot  
marked Germany 3/0 R137A  
\$50 - \$100

**1127**

Two Probable S Bergmann Jr. & Co All  
Bisque Baby Dolls  
solid dome heads painted features, moving  
limbs 11cm with tinplate dolls pram  
Marked Germany P 2  
\$50 - \$100

**1128**

SFBJ Bisque Doll  
all painted features closed mouth with  
blonde mohair wig on French straight limb  
body 31cm  
marked FRANCE SFJB 60 Paris 11/o  
\$100 - \$200

**1129**

French Bisque Doll  
dark pupiless eyes, open/closed mouth with  
dark nylon wig on French bent straight limb  
body 20cm  
marked ? FRANCE 4  
\$100 - \$150

**1130**

German Painted Bisque Doll  
brown eyes, brown mohair wig on bent/  
straight limb body 23cm  
marked W Germany A  
\$50 - \$100





1069



1076



1115



1116



1096



1232



1100



1103



1089



1102



1104



1099

**1131**

French Belton Type Bisque Doll  
flange head with blue stationary eyes, closed mouth, brown mohair wig on straight limb body with moulded shoes and grey socks  
24cm unmarked  
\$100 - \$150

**1132**

SFBJ Bisque Doll  
sleeping dark pupiless eyes dark brown hair wig on jointed body 52cm  
marked SFBJ 60 Paris 3  
\$200 - \$300

**1133**

SFBJ Bisque Doll  
blue eyes with lashes, light brown hair wig on jointed body 42cm  
marked SFBJ 301 Paris 5 over printed TETE JUMEAU  
\$500 - \$1,000

**1134**

SFBJ Bisque Doll  
dark pupiless eyes, brown hair wig on jointed body 43cm  
marked SFBJ Paris 6  
\$200 - \$300

**1135**

Probable Cuno & Otto Dressel Bisque Doll  
blue moving eyes by lever at the back of the head, light brown mohair wig on leatherette body with bisque hands 46cm  
marked 1776 COD 2 DEP Made in Germany  
\$400 - \$600

**1136**

J D Kestner Bisque Doll  
blue eyes, pierced ears with remains of blonde mohair wig on ball jointed body 46cm  
marked 1/192 C  
\$200 - \$400

**1137**

'Camille' French Bebe Jumeau Bisque Doll  
blue stationary paperweight eyes, pierced ears, open mouth with top teeth light brown hair wig on cork pate on jointed composition body 42cm  
marked 5  
\$2,500 - \$4,000

**1138**

SFBJ Princess Elizabeth Jumeau Bisque Doll  
flirty blue eyes, closed mouth, brown hair wig on jointed body 44cm  
marked Unis France, 306, Jumeau, 1938, Paris wearing original yellow cotton gown  
\$500 - \$1,000

**1139**

A Lanternier & Cie ToTo Bisque Character Doll  
brown stationary eyes, open/closed mouth with teeth, pierced ears, brown mohair wig on jointed body 38cm  
marked TOTO N2 Mialonof ? ALc LIMOGES wearing vintage national costume dress  
\$500 - \$1,000

**1140**

SFBJ 236 Laughing Jumeau Character Doll  
blue eyes with lashes, open/closed mouth light brown mohair wig on jointed body 40cm  
marked SFBJ 236 Paris 6  
\$600 - \$1,000

**1141**

SFBJ 237 Character Boy Doll  
blue paperweight eyes, moulded dome head with hair flock on jointed body 41cm  
marked SFBJ 237 Paris 4  
\$600 - \$1,000

**1142**

Kammer & Reinhardt Solid Dome Bisque Character Baby  
all moulded and painted features with the rarer brown eyes, open/closed mouth on 5pce bent body 48cm  
marked K \* R 100 50 wearing antique christening gown  
\$600 - \$1,000

**1143**

German Solid Dome Bisque Character Baby  
all moulded and painted features, open/closed mouth on 5pce bent body 29cm  
marked 2 Germany  
\$200 - \$400

**1144**

Gebruder Heubach Bisque Character 'Baby Stuart' Doll  
painted features with moulded bonnet head on 5pce bent limb body 26cm  
marked monogram 3 Germany  
\$300 - \$500

**1145**

J D Kestner Bisque Character Baby  
brown eyes, open mouth with two bottom teeth, light brown fur wig on 5pce bent limb body 32cm  
marked Made in Germany 211 J D K  
\$150 - \$300

**1146**

Gebruder Heubach Solid Dome Bisque Pouty Character Baby  
all painted and moulded features on 5pce bent limb body 29cm  
marked monogram Germany  
\$150 - \$300

**1147**

Gebruder Heubach Bisque Character Clockwork Crying & Walking Doll  
solid dome socket head with painted feature on card body 24cm  
marked monogram Germany  
\$150 - \$300

**1148**

German Bisque Bonnet Head Character Doll  
all moulded and painted features with pink bow and ribbon trimmed bonnet on bent/straight limb 5pce body 19cm  
marked 22 10/0 with original outfit and card box  
\$200 - \$400

**1149**

German Bisque Bonnet Head Character Doll  
all moulded and painted features with yellow ribbon trimmed bonnet on bent/straight limb 5pce body 19cm  
marked 26 9/0 with original outfit and card box  
\$200 - \$400

**1150**

Armand Marseille Floradora Bisque Doll  
blue eyes, blonde mohair wig on 5pce straight limb body 34cm  
marked Made in Germany Armand Marseille DRGM 240/1 Floradora A 3/0X M with original outfit and card box  
\$300 - \$500

**1151**

Schoenau & Hoffmeister Brown Bisque Toddler Doll  
brown eyes, black mohair wig on 5pce bent/straight limb body 23cm  
marked S PB H Hanna 8/0  
\$200 - \$300

**1152**

Armand Marseille 'Googly' Character Doll  
brown stationary eyes closed mouth with brown mohair wig on bent/straight limb 5pce body 17cm  
marked 323 Germany A 11/0 M with original French Alsatian national costume outfit  
\$300 - \$600

**1153**

Possible Cuno & Otto Dressel Bisque Shoulder Plate Doll  
blue stationary eyes closed mouth with white mohair wig on moulded head, rag body with trade mark 'Poppy Doll' stamp 26cm  
marked 14/0  
\$200 - \$300

**1154**

Made in England Bisque Shoulder Plate Doll  
All painted features brown mohair wig on rag body with composition lower limbs 36cm  
marked G B Made in England  
\$75 - \$150

**1155**

Bisque Shoulder Plate Doll  
with moulded features with stylized hair and black ribbon on rag body with bisque lower limbs 29cm  
unmarked with original undergarments and skirt  
\$75 - \$150

**1156**

Probable Kling Shoulder Head Doll  
all moulded and painted features with blonde hair on new rag body with bisque hands 37cm  
marked 189 2  
\$100 - \$200



1163



1161



1329 / 1330



1305



1310



1311



1165



1308 / 1307 / 1309



1315



1338



1333



1336



1265



1256



1263



1261



**1157**

Moulded China Head Doll  
all painted features with black hair, shoulder plate on rag body with china lower limbs 29cm  
antique costume dress and under garments  
\$75 - \$150

**1158**

Moulded China Head Doll  
all painted features with brown hair, shoulder plate on rag body with china lower limbs 32cm  
marked 0 Germany  
antique costume dress and under garments  
\$75 - \$150

**1159**

'Bertha' Moulded China Head Doll  
all painted features with black hair, moulded collar shoulder plate on rag body with china lower limbs 34cm  
\$50 - \$100

**1160**

Moulded China Head Doll  
all painted features with black hair, shoulder plate on rag body with replacement china lower limbs 44cm  
\$50 - \$100

**1161**

Original Boxed Pair Happifats All Bisque Character Dolls  
10cm  
\$200 - \$300

**1162**

Two All Bisque Character Dolls  
Happifat white moulded white combinations and other with light blue combinations and moulded pixie hat 9.5cm  
\$75 - \$150

**1163**

Two All Bisque German Kewpie Dolls  
dress as boy and girl, the girl with moulded blue ribbons to side of head 14cm  
\$100 - \$200

**1164**

All Bisque German Kewpie Doll  
moving arms 14cm  
\$50 - \$100

**1165**

All Bisque 'Fumsup'- A First World War Lucky Mascot  
moving arms 15cm  
\$75 - \$150

**1166**

All Bisque Nippon Character Doll  
blue and white moulded combinations, moving arms 18cm  
\$75 - \$150

**1167**

Japanese Morimora Bisque Character Doll  
solid dome head with brown eyes, closed kewpie type mouth on 5pce bent limb body 27cm  
marked M monogram Nippon  
\$75 - \$150

**1168**

Tiny German All Black Bisque Doll  
stationary glass eyes, brown mohair wig 9cm  
marked 0-1 8  
\$100 - \$200

**1169**

Three Tiny All Bisque Dolls  
German with blue glass eyes and blonde hair wig, shoulder plate on rag body with national costume and painted features with new mohair wig 10cm, 9.5cm  
\$100 - \$200

**1170**

Two French Tiny All Bisque Dolls  
bisque and painted bisque painted features boy & girl in national dress 10cm  
\$100 - \$150

**1171**

Two Tiny All Bisque Dolls  
stationary eyes with blonde wigs wearing original outfits 9cm  
\$100 - \$200

**1172**

Two All Bisque Boy and Girl Dolls  
all moulded and painted features with hair wigs 16cm  
\$150 - \$250

**1173**

Armand Marseille Bisque Doll  
blue eyes, brown mohair wig on 5pce bent/straight limb body 29cm  
marked ... 560 A 10/0 M DRM R 232/1  
\$100 - \$200

**1174**

German Bisque Doll  
dark pupiless eyes on 5pce straight limb body 22cm  
marked Germany K1 wearing original Scots Guard outfit  
\$100 - \$150

**1175**

Schoenau & Hoffmeister Oriental Character Doll  
dark pupiless eyes, black mohair wig on bent/straight limb body 20cm  
marked S PB H  
\$150 - \$300

**1176**

SFBJ Bisque Doll  
painted features, brown mohair wig on French straight limb body 22cm  
marked SFBJ 60 Paris 13/0  
\$75 - \$150

**1177**

SFBJ Bisque Doll  
painted features, light brown mohair wig on French straight limb body 23cm  
marked SFBJ 60 Paris  
\$75 - \$150

**1178**

German Bisque Doll  
blue eyes new blonde mohair wig on bent/straight limb body 20cm  
marked ...Made in Germany wearing original chemise  
\$75 - \$150

**1179**

Theodor Recknagel Bisque Doll  
blue stationary eyes, brown mohair wig on bent/straight limb body 13cm  
marked R 20 A  
\$75 - \$150

**1180**

Theodor Recknagel Bisque Doll  
blue eyes, brown mohair wig on bent straight limb body 17cm  
marked R 15/0 A  
\$75 - \$150

**1181**

German Bisque Doll  
blue eyes blond mohair wig on jointed body 18cm  
marked Made in Germany 12/0 wearing original Russian national costume  
\$100 - \$150

**1182**

William Goebel Bisque Doll  
dark pupiless eyes, brown mohair wig on straight limb body 14cm  
marked G W monogram Germany wearing original Scottish costume  
\$75 - \$150

**1183**

Moulded Head Shoulder Plate Doll  
painted features with curled blonde hair on rag body with bisque lower limbs 27cm  
wearing original Scottish costume  
\$100 - \$150

**1184**

Gebruder Kuhnlenz Bisque Doll  
dark pupiless eyes, light brown mohair wig on straight limb body 21cm  
marked sun burst monogram Germany 44-18  
\$75 - \$150

**1185**

Theodor Recknagel Bisque Doll  
blue eyes, new light brown nylon wig on jointed body 28cm  
marked 24 Germany R 10/R  
\$75 - \$150



**1186**

Armand Marseille Painted Bisque Doll  
blue eyes, light brown mohair wig on bent/  
straight limb body 25cm  
marked Armand Marseille Germany 390 A  
9/0 M  
\$75 - \$150

**1187**

Armand Marseille Bisque Dream Baby Doll  
blue sleeping eyes closed mouth on bent  
limb body 18.5cm  
marked A M Germany 341/5/0K  
\$75 - \$150

**1188**

Armand Marseille Bisque Dream Baby Doll  
dark stationary eyes open mouth with two  
bottom teeth on 5pce body 18cm  
marked A M Germany 351 6/0K with original  
cotton skirt  
\$100 - \$150

**1189**

Possible Theodor Recknagel Bisque Baby  
Doll  
painted features on 5pce body 17cm  
marked Germany 1924 18/0  
\$50 - \$100

**1190**

Heubach Laughing Character Boy Doll  
all painted and moulded features on 5pce  
straight limb body 20cm  
marked Heubach 5 over 0 D Germany  
\$100 - \$150

**1191**

Two All Bisque Dolls  
blue eyes, dark brown new nylon wig with  
baby character doll 14cm, 11cm  
\$75 - \$150

**1192**

Two All Bisque Dolls  
both with moulded blonde curled hair with  
blue ribbons 15cm, 14cm  
\$100 - \$150

**1193**

Two All Bisque 'Pissing' Dolls  
all moulded and painted features standing  
boy and seated lady with bonnet 8cm, 6cm  
\$75 - \$150

**1194**

Two All Bisque Dolls  
painted features with mohair wigs together  
with bisque in new metal dolls pram 10cm  
\$50 - \$100

**1195**

All Bisque Doll and Character Baby  
brown glass eyes, blonde mohair wig, baby  
with all painted features 14cm, 10cm  
\$50 - \$100

**1196**

Heubach Bisque Character Baby  
all painted features on 5pce body 12cm  
marked 13/0 Germany seated on rocking  
horse chair stamped Germany  
\$75 - \$150

**1197**

Probable Kling Bisque Shoulder Plate Doll  
painted features, blonde mohair wig on rag  
body 20cm with tiny all bisque doll in original  
crepe paper outfit  
\$75 - \$150

**1198**

Two Tiny German All Bisque Character Dolls  
both with painted features moving arms  
with original costumes of Scottish and under  
garment 8cm  
\$75 - \$150

**1199**

Two Tiny All Bisque Character Dolls  
both with painted features, moving arms to-  
gether with piano baby of boy toddler arms  
in the air 7cm, 8cm  
\$75 - \$150

**1200**

Two Nippon All Bisque Character Dolls  
boy and girl with moulded and painted fea-  
tures, moving arms and legs 17cm  
\$50 - \$100

**1201**

William Goebel Character Girl Doll  
moulded socket heart with bob hair on  
straight limb body together with character  
doll, made in Japan 17cm, 26cm  
\$75 - \$150

**1202**

Three All Bisque Nippon Character Dolls  
all moulded features of bob hair, bonnet with  
green band and all moulded chemise 18cm,  
12cm, 10cm  
\$50 - \$100

**1203**

Three All Bisque Nippon Character Dolls  
similar to above lot  
\$50 - \$100

**1204**

Four All Bisque Nippon Character Dolls  
\$40 - \$80

**1205**

Four All Bisque Nippon Character Dolls  
\$40 - \$80

**1206**

Tiny German All Bisque 'Two Face' Character  
Baby  
all painted and moulded features of happy  
and grumpy faces 11cm together with metal  
cot  
\$100 - \$150

**1207**

Original Carded Six Tiny German All Bisque  
Dolls  
painted features each wearing different  
coloured crocheted outfit 5cm  
\$75 - \$150

**1208**

Six Tiny German All Bisque Dolls  
all identical in original box painted features  
with flower garland hair band, moving arms  
7cm  
\$100 - \$200

**1209**

Original Carded Five Japanese Painted  
Bisque Dolls  
all moulded with different coloured dresses  
\$50 - \$100

**1210**

Five Japanese Painted Bisque Dolls  
all moulded seated pose with different  
coloured dresses  
\$50 - \$100

**1211**

Three Part Original Carded Japanese Painted  
Bisque Dolls  
painted features with moving arms, straight  
legs with baby doll in cot  
\$40 - \$80

**1212**

Six Original Carded German Painted Bisque  
Baby Dolls  
each with different cot gown, all with open  
mouths and paper dummies 8cm  
\$75 - \$150

**1213**

All Composition Baby Doll  
painted features with display showing 5pces  
original clothing 13cm  
\$50 - \$100

**1214**

Original Boxed German Painted Bisque Baby  
Twins  
displayed on pink layette 11cm with original  
ticket price \$1.25 Lamson's Toledo  
\$50 - \$100

**1215**

Original Boxed Japanese "My Dolly's Nurs-  
ing Set"  
bisque baby doll with feeding bottle and  
rattle 10cm  
\$30 - \$50

**1216**

Three All Painted Bisque Baby Dolls  
moving arms with straight limbs 8.5cm,  
wooden cot display and pram with original  
boxed 'Doll's Nursing Set' of glass feeding  
bottle  
\$40 - \$80

**1217**

Set Seven Japanese All Composition Baby  
Doll  
each in different pose seated and lying  
(Week Day Children) 13cm  
\$75 - \$150

**1218**

Part Boxed Five Made in Japan All Bisque Dolls  
 painted features, moving arms with printed cotton dresses and extras to be made up  
 13cm  
 \$75 - \$150

**1219**

Two German Painted Bisque Character Baby Dolls  
 sleeping eyes, rag and bent limb bodies  
 22cm, 16cm  
 marked Germany ... and AM 351  
 \$75 - \$150

**1220**

China Head Doll  
 with metal dressing table and stool, tiny bisque doll, baby and two tiny china heads  
 \$50 - \$100

**1221**

Six Various Small Bisque Dolls House Dolls  
 \$50 - \$100

**1222**

Seven China Frozen Charlotte and Pudding Dolls  
 11cm to 2.5cm  
 \$50 - \$100

**1223**

Seven China Frozen Charlotte and Pudding Dolls  
 similar as above lot  
 \$50 - \$100

**1224**

Four Tiny All Bisque Dolls  
 moving limbs 6cm with china trinket box relief moulded of child in cot 11cm  
 \$50 - \$100

**1225**

Two Tiny Snow Babies  
 with pair china bookends and boy and girl holding toys  
 \$40 - \$80

**1226**

Boxed As New Hinz All Painted Bisque Baby and other  
 10cm, 8cm  
 \$50 - \$100

**1227**

Four Bisque and Painted Bisque Tiny Babies with cane cot, weighting scales and original boxed 'Dolls Nursing Set'  
 \$75 - \$100

**1228**

Three Painted Bisque Character Dolls  
 sleeping eyes, moulded hair and tiny on rocking horse 16cm, 8cm  
 \$50 - \$100

**1229**

Mixed Lot Seven Dolls  
 four small moulded bisque, tiny head only, shoulder plate and half head doll on pin cushion  
 \$50 - \$75

**1230**

'Rosie' Antique Composition Shoulder Plate Doll  
 blue stationary eyes, closed mouth blonde mohair wig on rag body with composition lower limbs painted shoes 43cm, wearing original cotton dress  
 \$100 - \$150

**1231**

Toute en Bois Doll  
 composition head with brown stationary eyes, closed mouth blonde mohair wig on jointed wooden body, unmarked  
 \$100 - \$200

**1232**

Original Boxed German Sonneberg Jllco Painted Bisque Socket Head Doll  
 all finely painted features, closed mouth blonde mohair wig on rag body with bisque arms 28cm wearing original Dutch national costume  
 \$100 - \$150

**1233**

Early C20th Wood and Composition Character Lady Doll  
 moulded and painted socket head with Pompadour hair and masquerade mask on jointed body 26cm original cotton and lace costume  
 \$100 - \$200

**1234**

Original Boxed McCall Peggy Mannequin Sewing Kit  
 composition figure with demountable arms comes complete with sewing accessories, McCall patterns together with reference book 'Miniature Mannequins' 33cm  
 \$200 - \$300

**1235**

Original Boxed McCall Peggy Mannequin as above lot comes with patterns 32cm  
 \$100 - \$150

**1236**

Part Boxed Butterick Mannequin as above lots comes with patterns 32cm  
 \$75 - \$100

**1237**

Simplicity Rubber Mannequin as above lots comes with wooden dressmakers dummy, pattern and sewing books  
 \$75 - \$100

**1238**

Made in England Blue Enamel Tinplate Child Sewing Machine  
 \$30 - \$50

**1239**

Early C20th All Composition Mannequin painted features, blonde mohair wig, she stands with arms outstretched painted shoes 30cm  
 \$100 - \$150

**1240**

Two Wax Over Composition Half Head Dolls painted features with blonde and brown wigs, bisque arms 12cm, 11cm  
 with part original boxes  
 \$50 - \$100

**1241**

Wax Over Composition Half Head Doll painted features with brown wig, bisque arms 13cm  
 with part original box  
 \$50 - \$100

**1242**

Wax Over Composition Half Head Doll painted features with blonde wig, bisque arms and socking legs 14cm  
 with original box  
 \$50 - \$100

**1243**

Wax Over Composition Half Head Doll painted features with blonde wig, bisque arms 14cm  
 with original shipping box  
 \$50 - \$100

**1244**

Wax Over Composition Half Head Doll & All Wax Doll  
 painted features with brown wigs, bisque arms 11cm, 6cm  
 \$50 - \$100

**1245**

Wax Over Composition Half Head Doll & All Wax Doll  
 painted features with blonde wigs 13cm  
 \$50 - \$100

**1246**

Two Wax Over Composition Half Head Dolls painted features with original blonde mohair wigs, bisque arms mounted on stands with lingerie garments and other 45cm, 42cm, 35cm  
 \$50 - \$100

**1247**

Two Wax Over Composition Half Head Dolls painted features with original blonde mohair and metallic thread wigs, bisque arms mounted on stands with gown costumes 39cm each together with other dressed as bride  
 \$50 - \$100

**1248**

Two Wax Over Composition Half Head Dolls painted features with original blonde & red mohair wigs, bisque arms mounted on stands with lingerie garments and gown 36cm, 37cm  
 \$50 - \$100



lots 1269 - 1288

#### 1249

Two Wax Over Composition Half Head Dolls painted features with original blonde mohair wigs, bisque arms mounted on stands with gown costumes 36cm, 31cm, 38cm \$50 - \$100

#### 1250

Two Wax Over Composition Half Head Dolls painted features with original blonde & red mohair wigs, bisque arms mounted on stand and other with body, wired legs both with gown costumes 39cm, 29cm \$50 - \$100

#### 1251

Three Wax Over Composition Half Head Dolls painted features with original blonde mohair wigs, bisque arms mounted on stands with gown costumes 27cm, 22cm, 21cm \$50 - \$100

#### 1252

Two All Wax and Wax Over Composition Half Head Dolls painted features with mohair wigs, wax arms mounted on stands with gown costumes 20cm, 18cm together with Art Deco portrait half head 11cm \$50 - \$100

#### 1253

Wax Over Composition & Two China Half Head Dolls Art Deco head with moulded 'bob' haircut and two German art deco china head with crimped hair #12500 20cm, 10cm \$50 - \$100

#### 1254

Three Early C20th Novelty 'Naughty' Beauty Boxes pair painted bisque ladies in shell boxes and other in turtle box (hair line crack to base) 10cm lengths \$50 - \$100

#### 1255

Fine German Bisque Half Head full length bisque arms on cushion base styled Gothic lady 17cm \$50 - \$100

#### 1256

Two Wax Head Baby Dolls as Candy Box in original swaddling box 15cm \$50 - \$100

#### 1257

Antique English Poured Wax Baby Doll blue glass stationary eyes, blonde hair rag body with was limbs 45cm wearing antique christening gown, American doll show 1996 First Award blue ribbon \$300 - \$500

#### 1258

Antique Wax Baby Doll moulded as the 'Christ Child' blue glass eyes, light brown hair on rag body with wax lower limbs 30cm \$100 - \$200

#### 1259

Antique Wax Figure Grotto of stand Mary and Joseph with the Christ Child 30 x 32cm \$300 - \$500

#### 1260

Three Fola Germany Wax Shoulder Plate Angels and Composition Christ Child Group angels on cloth cones 35cm, 20cm, 16cm length \$50 - \$100

#### 1261

Antique Italian Composition Christ Child Figure glass stationary eyes with original gown 19cm \$50 - \$100

#### 1262

Antique Small Poured Wax Child Figure reclining wearing chemise 7cm length \$50 - \$100

#### 1263

Antique Poured Wax Doll blue glass stationary eyes, blonde mohair wig in rag body with wax lower limbs 26cm \$100 - \$200

#### 1264

Hand Crafted By Cynthia Wright Wax Head Wood Worker Doll he stands in smocked shirt with his wood turning attached, tool chest and collection of miniature tools 48cm \$50 - \$100

#### 1265

Antique Wax Over Composition Pumpkin Head Doll dark pupiless eyes on bellow rag body with composition lower limbs 22cm with original outfit showing wear \$100 - \$150

#### 1266

Antique Neapolitan Italian Creche Doll composition on rag standing woman 35cm, new hand sew costume of quilted finish skirt \$75 - \$150

#### 1267

Two Tin Head Shoulder Plate Dolls boy with blue stationary eyes, blonde mohair wig, girl with moulded hair 28cm, 30cm \$50 - \$100

#### 1268

Toute en Bois Type Doll composition head with stationary eyes, closed mouth brown hair wig on jointed wooden body 61cm, unmarked \$200 - \$400

#### 1269

Maori Doll with original label 'Miri Maoril-ands Maid' composition head on rag body with cotton and flax costume 40cm \$200 - \$400

#### 1270

Maori Doll, Mother and Child hand crafted similar as above lot, 41cm \$100 - \$200

**1271**

Maori Doll, Mother and Child  
moulded hard plastic head on rag body with  
flax skirt and feather cape 39cm  
\$100 - \$200

**1272**

Lands, Wellington NZ All Composition Maori  
Doll  
painted features, mohair wig 5pce body with  
flax skirt 26cm  
\$100 - \$200

**1273**

Lands, Wellington NZ All Composition Maori  
Doll Mother and Child  
similar as above lot 27cm  
\$100 - \$200

**1274**

Lands, Wellington NZ All Composition Maori  
Doll  
similar as above lot wearing skirt and feather  
cape  
\$100 - \$200

**1275**

Lands, Wellington NZ All Composition Maori  
Boy Doll  
similar as above lots with flax skirt 24cm  
\$100 - \$200

**1276**

Possible Miri Maori Lands Mother and Child  
composition head on rag body with flax skirt  
and cotton cape 23cm  
\$75 - \$150

**1277**

Hand Crafted Carved Wooden Maori Warrior  
Doll  
stands with hair skirt and cloth cape 33cm  
\$50 - \$100

**1278**

Hand Crafted All Cloth Maori Doll Mother  
and Child  
painted feathers, wool wig with linen cos-  
tume 31cm  
\$30 - \$50

**1279**

Pair All Composition Maori Boy and Girl  
Dolls  
standing on bases with labels for 'Souvenir  
NZ Centennial Exhibition 1840-1940 10cm  
\$100 - \$200

**1280**

Pair All Composition Maori Boy and Girl  
Dolls  
as above lot (no labels)  
\$50 - \$100

**1281**

Pair Bisque Maori Boy and Girl Dolls  
painted features on 5pce bent limb bodies  
11cm  
\$100 - \$200

**1282**

Armand Marseille 370 Brown Bisque Shoul-  
der Plate Doll  
dark pupiless eyes, black mohair wig on rag  
body with bisque hands 27cm  
wearing full length skirt with wool cape  
\$200 - \$400

**1283**

Unmarked All Composition Maori Doll  
painted features with black mohair wig on  
bent/straight limb body 37cm  
\$75 - \$150

**1284**

Pedigree, England All Composition Maori  
Doll  
painted features with black mohair wig on  
bent/straight limb body 29cm  
\$75 - \$150

**1285**

Two Brown Celluloid Character Toddler Dolls  
with Maori dress  
painted features with flax skirts, feather  
cap and tiki pendants 30cm  
\$100 - \$150

**1286**

NZ Pedigree All Hard Plastic Maori Doll  
full flax skirt costume with cape, 41cm  
\$50 - \$100

**1287**

Six Various Maori Costume Dolls  
32cm to 9cm  
\$40 - \$80

**1288**

Seven Various Maori Costume Dolls  
31cm to 9cm  
\$40 - \$80

**1289**

Unmarked All Composition 'Topsy' Doll  
wool hair tufts on bent limb body together  
with Made in Japan all bisque Topsy doll,  
24cm, 15cm  
\$75 - \$150

**1290**

Pair Unmarked All Black Composition Dolls  
moulded and painted features on bent/  
straight limb bodies 17cm  
\$50 - \$100

**1291**

Pair Unmarked All Black Composition Baby  
Dolls  
with Germany black celluloid character  
toddler doll 10cm, 14cm  
\$50 - \$100

**1292**

Pair Unmarked All Black Bisque Baby Dolls  
and celluloid character baby 7cm, 10cm  
\$50 - \$100

**1293**

German All Brown Painted Bisque Toddler  
Doll  
moulded and painted features with green  
hair band with feathers together with Chad  
Valley character doll, brown hard plastic and  
velvet body 13cm, 17cm  
\$75 - \$150

**1294**

Made in Occupied Japan Celluloid Hawaiian  
Dancing Doll  
painted features with original skirt, clockwork  
15cm  
\$100 - \$150

**1295**

Vintage Japanese Itchimatsu Composition  
Doll  
stationary brown eyes, black wig on rag body  
with composition lower limbs 44cm wearing  
original kimono  
\$75 - \$150

**1296**

Two Japanese Itchimatsu Composition Dolls  
vintage and modern examples with original  
kimonos 25cm, 28cm  
\$50 - \$100

**1297**

Two Antique Composition Emperor and  
Empress Dolls  
together with three costume dolls 25cm to  
12cm  
\$50 - \$75

**1298**

Collection Miniature China Vases and various  
with Japanese bisque figure of naked boy  
10cm  
\$50 - \$100

**1299**

German All Brown Composition Character  
Doll  
brown eyes, closed mouth, nylon wig on  
bent/straight limb body 37cm  
marked Germany Mago 494.6/0  
\$100 - \$200

**1300**

Heubach All Composition Doll  
blue eyes, open mouth with two top teeth,  
light brown mohair wig on bent/straight limb  
body 50cm  
marked Heubach Koppelsdorf 320.2 Ger-  
many  
\$100 - \$200

**1301**

Unmarked Composition Flange Head Two  
Face Character Baby  
moulded and painted happy and sad faces  
on rag body with composition hands 44cm  
\$100 - \$150





1304



1328

### 1302

NZ PP Composition Shoulder Doll  
sleeping blue eyes with red mohair wig on  
rag body 51cm  
wearing period wedding gown  
\$30 - \$60

### 1303

Two Pedigree All Composition Baby Dolls  
all painted features together with unmarked  
Reliable toddler doll 25cm, 43cm  
\$40 - \$80

### 1304

Set Five Madame Alexander All Composition  
Dionne Quintuplets  
painted features, light brown mohair wigs on  
bent/straight limb bodies 19cm  
with original dress and bonnets and name  
tags, story book  
\$150 - \$300

### 1305

Pair All Composition Hebee - Shebee Dolls  
all moulded with vest bodies and blue/pink  
shoes 26cm  
boy with paper label to foot  
\$100 - \$200

### 1306

Boxed Horsman Hard Plastic New Limited  
Edition Hebee - Shebee Dolls  
15cm  
\$50 - \$75

### 1307

Pair Rose O'Neill All Composition Kewpie  
Dolls  
both with paper labels to chest 30cm  
\$100 - \$200

### 1308

Rose O'Neill All Composition Kewpie Doll  
33cm  
\$75 - \$150

### 1309

Pair Rose O'Neill All Composition Scootles  
Dolls  
30cm  
\$100 - \$200

### 1310

Set Three Part Boxed French "Gaby" co-  
quettish doll "Fetich Porter-Bonheur"  
painted composition green dress with blonde  
mohair wig, red with white wig and blue with  
dark brown wig 22cm  
paper label to base  
\$150 - \$300

### 1311

1920/30's Composition Carnival Flapper Doll  
painted features, blonde mohair wig  
together with similar doll, both in original  
outfits 22cm, 15cm  
\$75 - \$150

### 1312

1920/30's Composition Carnival Flapper Doll  
similar as above lot 18cm, 14cm with original  
box  
\$75 - \$150

### 1313

Unmarked All Composition Carnival Type  
Character Doll  
all painted features, brown mohair wig on  
body with moving arms and fixed straight  
legs 45 cm  
\$75 - \$150

### 1314

C1919 'Tiss Me'Hy Mayer Chalkware Doll  
moulded seated pose with brown mohair wig  
17cm, paper label to base  
\$50 - \$100

### 1315

A Schoenhut & Co All Wood Doll  
all painted features, blonde mohair wig on  
bent/walking body 43cm wearing original  
dress and bonnet  
\$150 - \$300

### 1316

(Italian) All Hard Plastic Walking Doll  
blue eyes, light brown mohair wig on straight  
limb body 46cm  
\$50 - \$75

### 1317

NZ Pedigree All Hard Plastic Walkie-Talkie  
Doll  
blue flirty eyes (no wig) 53cm  
\$40 - \$80

### 1318

NZ Pedigree All Hard Plastic Baby Doll  
still with paper tag together with three other  
hard plastic dolls 23cm, 17cm  
\$50 - \$75

### 1319

Masudaya, Japan Celluloid & Tinplate Walk-  
ing Doll  
plastic sleeping eyes with moulded features,  
clockwork 34cm  
\$50 - \$100

### 1320

Four Nancy Ann & Nancy Ann Style Compo-  
sition Dolls  
All with moving arms, three with original  
dresses, 16cm  
\$50 - \$75

### 1321

Madame Alexander Doll  
Spanish dress with various hard plastic, com-  
position celluloid character dolls and babies  
and two boxed dolls dress sets  
\$50 - \$75

### 1322

Pair New Bisque Character Boy and Girl Dolls  
with sailor outfits 35cm seated on machine  
tapestry covered doll wing armchair  
\$40 - \$80

### 1323

Boxed As New Jan McLean Bisque & Vinyl  
Doll  
Little Nell Ltd ed 878/3500 39cm  
\$100 - \$300

**1324**

Boxed As New Jan McLean Bisque & Vinyl Doll  
Nelle lid ed 206/3500 50cm  
\$150 - \$300

**1325**

Boxed Mundia New Bisque & Rag Character Doll  
Ophelie 64cm  
\$50 - \$150

**1326**

Boxed Mundia New Bisque & Rag Character Doll  
Louis XVII 50cm

**1327**

NZ Pedigree All Hard Plastic Toddler Doll  
blue sleeping eyes with brown mohair wig  
40cm comes wardrobe of clothes, photo with owner other hard plastic doll and three cloth dolls  
(note this lot is not from the Wright collection)  
\$50 - \$100

**1328**

Vintage German Buschow & Beck School Playset  
seven celluloid children with teacher, wooden desks, toilet and accessories/props together with constructional toy gym set  
\$300 - \$600

**1329**

All Celluloid Diddums (Mabel Lucie Attwell) Character Doll  
painted features with moving arms 24cm  
Marked Palitoy Made in England  
\$150 - \$300

**1330**

All Celluloid Diddums (Mabel Lucie Attwell) Character Doll  
painted features with moving arms 15cm  
\$50 - \$100

**1331**

All Celluloid Diddums (Mabel Lucie Attwell) Character Doll  
painted features with moving arms 23cm  
Marked Made in England  
\$150 - \$300

**1332**

C1903's French Migonnette Petitcollin All Celluloid Doll  
brown stationary eyes closed mouth with dark brown mohair wig on straight limb body 47cm  
marked France PoP 48

**1333**

Original Boxed France Petitcollin Celluloid Character Boy Doll  
painted features on bent/straight limb body 27cm  
\$50 - \$75

**1334**

France Petitcollin Jean D Arc All Celluloid Girl Doll  
moulded features with bob cut hair 21cm together with boy 20cm  
\$50 - \$100

**1335**

German Turtle Mark Celluloid Character Baby Doll  
and two other toddler dolls 15cm, 21cm  
\$50 - \$100

**1336**

Pair Made in Japan Celluloid Character Toddler Dolls  
boy has moulded red pants and working voice, girl with green pants 40cm, 30cm  
\$50 - \$100

**1337**

Flower Mark Made in Japan Celluloid Character Girl  
moulded with ribbon and clip in hair together with character baby 29cm, 22cm  
\$50 - \$75

**1338**

Pixytoy Made in Japan Baby Blue Eyes Baby Doll  
40cm  
\$50 - \$75

**1339**

Made in Japan Celluloid Crawling Doll  
clockwork together with character girl with moulded combinations 14cm length, 16cm  
\$50 - \$100

**1340**

Original Boxed German Celluloid 'Billy and Betty Walker'  
finger puppet dolls with original outfits  
\$50 - \$100

**1341**

Four Celluloid Character Dolls  
standing boy in romper suit, girl with mohair wig and two tiny's scout master and mistress 15cm, 13cm, 8cm  
\$40 - \$80

**1342**

Two Celluloid Carnival Character Dolls  
gold painted crimped hair 15cm, one with original dress  
\$40 - \$80

**1343**

Three Made in Japan Celluloid Kewpies 24cm, 12cm, 14cm

**1344**

Collection Tiny Celluloid Kewpies (19) contained in Victorian china stork posy vase  
\$50 - \$100

**1345**

Made in Japan Celluloid Snow White and the Seven Dwarves  
8.5cm, 7cm  
\$50 - \$100

**1346**

Collection Celluloid Baby Dolls (7) with two metal prams 17cm to 5cm  
\$40 - \$80

**1347**

Collection Celluloid Baby Dolls (7) with pink celluloid pram and metal pram 17cm to 5cm  
\$40 - \$80

**1348**

Collection Small Celluloid and Hard Plastic National Costume Dolls  
16cm to 8cm (7)  
\$40 - \$80

**1349**

Boxed as New Pair Schildkrot-Puppen Dolls all hard plastic boy and girl, dressed in sailor outfits  
\$50 - \$75

**1350**

Collection Celluloid Doll House Dolls  
Mother and Father, Grandmother and five children 14cm - 7cm  
\$100 - \$150

**1351**

Tiny and Miniature Peg Dolls with hand crafted Lailai Fiji doll  
\$40 - \$80

**1352**

Made in Japan Celluloid 'Felix the Cat' 11cm  
\$40 - \$80

**1353**

Collection Celluloid Animals  
Stork, two dogs, cat, hen, bird (6)  
\$30 - \$60

**1354**

Miniature Flock Dog  
seated pose with other and new crafted miniature teddy bear together with West Germany four zoo animals  
\$50 - \$100

**1355**

Steiff for Harrods Edward The Attic Bear  
blonde mohair plush 32cm ltd ed 654/1500  
\$100 - \$150

**1356**

Steiff 100Years (1902) Teddy Bear  
blonde mohair plush 27cm  
\$75 - \$150

**1357**

Reference  
Colemans The Collector's Encyclopaedia of Dolls Vols I & II  
\$50 - \$100

**1358**

Reference  
The Art of Dolls 1700 - 1940  
German Doll Encyclopaedia 1800-1939  
\$40 - \$80

**1359**

Reference  
A Whispering of Dolls, Theriault  
Treasury of German Doll 1  
Treasury of French Dolls 2  
Fashion Dolls  
\$30 - \$60

**1360**

Reference  
Pollocks Dictionary of English Dolls  
The Complete Book of All-Bisque Dolls  
The History of Wax Dolls  
Celluloid Dolls  
Americas, Australia & Pacific Island Costumed Dolls  
\$30 - \$60

**1361**

Reference  
Nippon Dolls & Playthings  
Celluloid Dolls of the World  
Simon & Halbig Dolls  
Dolls, European Dolls 1800 - 1930  
\$30 - \$60

**1362**

Reference  
The Dolls Dressmaker  
Toys of Early NZ  
The Jumeau Doll  
Geruber Heubach Dolls  
Doll Costuming  
Care of Favorite Dolls  
Jan Foulke's Guide to Dolls 2006 & 2011  
\$30 - \$60

**1363**

Victorian Child's Part Nursery Teaset  
with Limoges miniature table and four chairs,  
filigree teaset, gilt pram and glass display  
box  
\$50 - \$100

**1364**

Collection Miniature Doll Display Props  
teddy bears, doll and pram, table, animals,  
ornaments etc  
\$40 - \$80

**1365**

Collection Miniature Doll Display Props  
similar as above lot  
\$40 - \$80

**1366**

Collection Miniature Doll Display Props  
similar as above lot  
\$40 - \$80

**1367**

Collection Miniature Doll Display Props  
similar lot as above  
\$40 - \$80

**1368**

Collection Miniature Doll Display Props  
similar lot as above  
\$40 - \$80

**1369**

Collection Miniature Doll Display Props  
similar lot as above  
\$40 - \$80

**1370**

Small .925 Silver Vanity Mirror  
with 9ct bar brooch, baby brooch and silver  
kewpie charm  
\$50 - \$100

**1371**

Art Deco Beaded Purse  
with Art Deco plastic purse, powers, s/plate  
vesta  
\$50 - \$100

**1372**

Miniature Mesh Purse  
with Art Deco plastic compacts, purse, wood-  
en shoe  
\$50 - \$100

**1373**

Miniature Matchbox Coronation Coach &  
Horses  
with souvenir pen and booklet  
\$30 - \$50

**1374**

Collection of 17 Britain's Cadbury's Coco  
Cubs  
\$100 - \$200

**1375**

Collection Sewing and Other Doll Props  
wooden mannequin, shoe ornaments, china  
sewing machine tape measure  
\$40 - \$80

**1376**

Collection Dolls House Miniatures  
with two peg dolls, white metal furniture and  
novelty's  
\$50 - \$100

**1377**

Victorian Parasol, Dolls Parasol and Basket  
some faults  
\$30 - \$50

**1378**

Vintage Pair Toddler Shoes and Various  
Baby/Doll Bonnets  
\$30 - \$50

**1379**

Qty Doll Wigs  
and various cane baskets, hats and accesso-  
ries  
\$40 - \$80

**1380**

Qty Doll Shoes, Socks and Clothing  
\$30 - \$50

**1381**

Qty Doll Shoes, Socks and Clothing

**1382**

Dolls Cane Chair, Iron Bench, Deck Chair and  
Pram  
\$20 - \$40

**1383**

Vintage Woven Seagrass Cane Dolls Pram  
\$75 - \$150

**1384**

Vintage Cane and Iron Dolls Pram  
\$75 - \$150

**1385**

Vintage Painted Red Dolls Adjustable High-  
Chair  
(this lot is not from the Wright collection)  
\$50 - \$100

# Recent Fine Jewellery Highlights



1



2



3



4



5



6



7



8



9



10



11





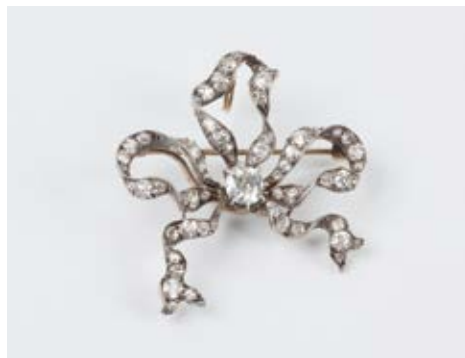
12



13



14



15



16



17



18



19



20

Illustrated: **1** Mikimoto cultured pearls - \$12,000 **2** Presentation Medallion Albert Chain - \$9,500 **3** 18ct Two Stone Diamond Ring - \$33,000 **4** 18ct Emerald & Diamond Ring - \$15,650 **5** Platinum Solitaire Diamond Ring - \$23,300 **6** 18ct 13stone Burmese Ruby & Diamond Cluster Ring - \$60,000 **7** Tiffany & Co Platinum Solitaire Diamond ring - \$38,000 **8** Unmounted Aquamarine Gem Stone - \$18,000 **9** NZ 9ct Single Large Cairngorm snap bangle - \$8,900 **10** 9ct Mounted Dog Claw Brooch with inscription from Scotts Expedition - \$10,000 **11** NZ 15ct Greenstone Panel Bracelet - \$10,700 **12** Platinum 152stone Diamond Fancy Bracelet - \$26,000 **13** Early C20th Gold Amethyst & Diamond Brooch - \$3,000 **14** Art Deco Period 18ct White Gold 53stone Emerald & Diamond Brooch - \$8,600 **15** Victorian S/S and 15ct Diamond Brooch - \$2,600 **16** Cartier Duck Brooch - \$7,400 **17** 18ct White Gold Diamond Hinged Snap Bangle - \$13,000 **18** Early C20th Liberty of London 18ct, Platinum Opal and Diamond Pendant \$39,400 **19** NZ 15ct 15stone Garnet & Moonstone Pendant - \$27,000 **20** Victorian Gold Renaissance Revival Pendant - \$6500 \* Rounded to the nearest hundred and include buyers premium + GST



ENTRIES CURRENTLY INVITED

## Fine & Estate Jewellery

Mid 2020

Enquiries

**Bettina Frith**

+64 4 472 1367

reception@dunbarsloane.co.nz

**Dunbar M Sloane**

+64 9 377 5820

auckland@dunbarsloane.co.nz



ENTRIES CURRENTLY INVITED

## Antique & Decorative Arts

Mid 2020

Enquiries

**Anthony Gallagher**

+64 4 472 1367

antiques@dunbarsloane.co.nz

**Dunbar M Sloane**

+64 9 377 5820

auckland@dunbarsloane.co.nz



## New Zealand & International Fine & Applied Arts

Early June

Enquiries

**Helena Walker**

+64 4 472 1367

[art@dunbarsloane.co.nz](mailto:art@dunbarsloane.co.nz)

**Dunbar M Sloane**

+64 9 377 5820

[auckland@dunbarsloane.co.nz](mailto:auckland@dunbarsloane.co.nz)



## Studio Ceramics & Applied Arts

Early June

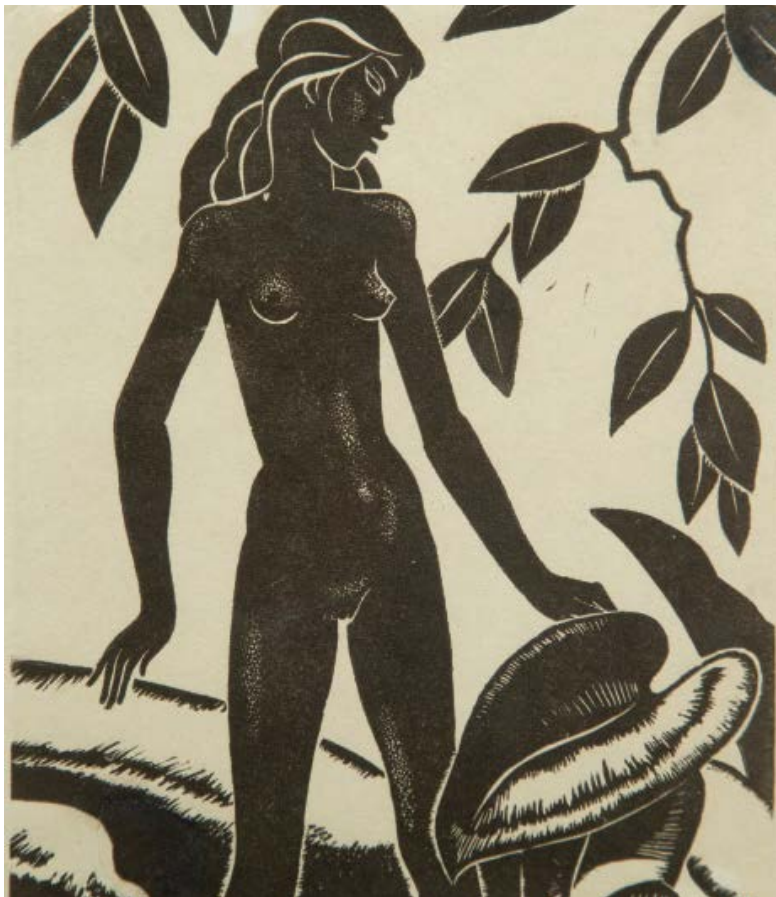
Enquiries

**Helena Walker**

+64 4 472 1367

[art@dunbarsloane.co.nz](mailto:art@dunbarsloane.co.nz)





ENTRIES CURRENTLY INVITED

## Affordable Art

Late June 2020

Enquiries  
+64 4 472 1367  
[info@dunbarsloane.co.nz](mailto:info@dunbarsloane.co.nz)



ENTRIES CURRENTLY INVITED

## Rare Books

Late June 2020

Enquiries  
**Anthony Gallagher**  
+64 4 472 1367  
[antiques@dunbarsloane.co.nz](mailto:antiques@dunbarsloane.co.nz)  
**Dunbar M Sloane**  
+64 9 377 5820  
[auckland@dunbarsloane.co.nz](mailto:auckland@dunbarsloane.co.nz)



# Buyers Guide

If you have not bought from Dunbar Sloane before, please read the following notes.

Staff will be pleased to answer any questions you may have.

## BEFORE AUCTION

The terms and conditions under which the buyer acts at a sale are detailed at the back of this catalogue. We recommend that you read and understand these conditions of business before registering to bid at an auction. This sale is subject to the conditions of business printed in this catalogue and to the reserves.

### Viewing

All lots are available for inspection prior to the sale. Although staff will endeavour to answer your enquiries, and give advice, the final decision to bid, is at your discretion and liability.

### Pre-Sale Estimates

The estimated prices printed below the catalogue descriptions are in New Zealand dollars and are the approximate prices expected to be realised, excluding buyers premium. They are not definitive, they are prepared well in advance of the sale and they are subject to revision.

### Condition reports

Dunbar Sloane Ltd will provide a condition report on request, if you would like an opinion on any particular lot, up to 24 hours before the start of auction. All goods are sold "as is" and it is up to the buyer to satisfy themselves as to the condition of an item before the auction.

## AUCTION

### Purchasing at Auction

You are able to bid using the following four methods:

#### 1. Bidding in the Room

To bid at the auction you will need to register for a bidding number at the front desk either during the viewing or prior to the auction. Please bid clearly and promptly using your bidding number.

#### 2. Absentee Bidding

If you are unable to attend the auction, Dunbar Sloane Ltd can bid on your behalf according to your written instructions. This is a free service for intended buyers. Please complete clearly the form at the back of this catalogue and submit it to Dunbar Sloane Ltd at least 24 hours before the sale to ensure it is safely received. Lots will be purchased for you as reasonably as possible, subject to other bids in the room and to reserves.

#### 3. Telephone Bidding

If you are unable to attend the auction, you can elect to bid by telephone (subject to availability). Telephone bidding must be arranged with Dunbar Sloane Ltd prior to the sale and is subject to a minimum lot estimate of \$500 or greater. Please note that the auctioneer determines the increments in bidding, not the telephone bidder. We accept no responsibility if for whatever reason we are unable to contact you and as such recommend leaving a covering bid.

#### 4. Live Online Bidding

We offer live online bidding on our website: [www.dunbarsloane.co.nz](http://www.dunbarsloane.co.nz)

Registering online does not automatically register to bid, and further identification maybe required, especially if you are an International client.

### Approximate Selling Rate

Auctions are generally conducted at the rate of about 60-80 lots per hour. However, this can vary.

### Buyers Premium

The buyer shall pay to Dunbar Sloane Ltd a premium of 17% of the hammer price plus GST on the premium only—effectively adding 19.55% to the hammer price.

## POST AUCTION

### Payment

Payment for purchase is due in New Zealand dollars within 48 hours from the date of sale by cash, cheque, eftpos or electronic transfer. Bank details as follows:

**Dunbar Sloane Ltd**

**06 0501 0524945 00**

**Swift Code ANZBNZ22**

Please include details of sale date and lot numbers with all payments.

International clients will need to add an additional \$25NZD to cover bank transfer fees

### Collection of Purchases

Property purchased can be collected as soon as full payment has been received. Any items not collected within seven days of the auction may be subject to a storage and fee. Insurance (subject to terms and conditions) applies for up to two working days from the date of the sale whilst items are in our care.

Items must be paid for straight away and a second account for courier/freight charges will follow as soon as possible when we have confirmed courier charges.

### Packaging and Transportation

We advise buyers to arrange transport and insurance with their preferred provider/s. We accept no responsibility for loss or damage once goods are in the hands of carrier.

For smaller, courierable items, Dunbar Sloane Ltd can arrange packing and courier for a fee. This is to be paid before the goods leave our premises. We pack with care, however we take no responsibility for damage once goods are in transit. It is up to the buyer to arrange their own transit insurance to cover any damage or loss.

# Conditions of Sale

## 1.

The highest Bidder is deemed to be the Buyer, and if during the Auction the Auctioneer considers that a dispute has arisen, the Lot in dispute shall be immediately put up again for sale.

## 2.

The Auctioneer has the right to refuse any bid and to advance the bidding at his absolute discretion.

## 3.

The Seller shall be entitled to place a reserve on any Lot and the Auctioneer shall have the right to bid on behalf of the Seller for any Lot on which a reserve has been placed.

Dunbar Sloane Ltd have the right to withdraw or divide any Lot or to combine any two or more Lots at their sole discretion.

## 4.

The Buyer shall forthwith upon the purchase give in his/her name and permanent address.

The Buyer may be required to pay down forthwith the whole or any part of the Purchase Money, and if he/she fails to do so, the Lot may at the Auctioneers absolute discretion be put up again and resold.

The Buyer shall pay to Dunbar Sloane Ltd a premium of 17% on the hammer price together with GST at the standard rate on the premium, and agrees that Dunbar Sloane, when acting as agent for the Seller, may also receive commission from the Seller.

## 5.

Each Lot sold by the Seller thereof with all faults and defects therein and with all errors of description and is to be taken and paid for whether genuine and authentic or not and no compensation shall be paid for the same.

Dunbar Sloane Ltd act as agents only and neither they nor the Seller are responsible for any faults or defects in any Lot or the correctness of any statement as the authorship, origin, date, age, attribution, genuineness, provenance or condition of any Lot.

All statements in the Catalogues, Advertisements or Brochures of forthcoming sales as to any of the matters specified in (b) above are statements of opinion, and are not to be relied upon as statements of representations of fact, and intending purchasers must satisfy themselves by inspection or otherwise as to all of the matters specified in (b) above, as to the physical description of any Lot, and as to whether or not any Lot has been repaired.

The Seller and Dunbar Sloane Ltd do not make or give, nor has any person in the employment of Dunbar Sloane Ltd any authority to make or give, any representation or warranty.

In any event neither the Seller nor Dunbar Sloane Ltd are responsible for any representation or warranty, or for any statement in the Catalogues, Advertisements or Brochures of forthcoming sales.

## 6.

Notwithstanding any other terms of these conditions, if within 7 days after the sale Dunbar Sloane Ltd have received from the Buyer of any Lot notice in writing that in his view the Lot is deliberate forgery and within 9 days after such notification, the Buyer returns the same to Dunbar Sloane Ltd in the same condition as at the time of sale and satisfies Dunbar Sloane Ltd had considered in the light of the entry in the Catalogue the Lot is a deliberate forgery then the sale of the Lot will be rescinded and the purchase price of the same refunded.

## 7.

To prevent inaccuracy in delivery, and inconvenience in settlement of Purchase, no Lot can be taken away during the times of sale, nor can any Lot be taken away unless it has been paid for in full.

All lots are to be paid for and taken away at the Buyer's expense within two working days from the sale. Purchases, whilst in our care, will be insured for this period (subject to terms and conditions).

## 8.

On failure of a Buyer to take away and pay for any Lot in accordance with Condition 7, Dunbar Sloane Ltd reserves any other right or remedies.

To resell the Lot or cause it to be resold by public sale, any money paid in part payment being forfeited, any deficiency attending such resale after deducting all costs incurred in connection with the Lot to be made good by the defaulting Buyer, and any surplus to be the Seller's or: To store the Lot or cause it to be stored whether at their own premises or elsewhere at the sole expense of the Buyer, and to release the Lot only after payment in full of the purchase price together with interest there on of 5% above Bank minimum lending rate, the accrued cost of removal, storage and insurance (if any) and all other costs incurred in connection with the Lot.

If the Lot has been in store pursuant to (ii) for more than 6 months, to remove the Lot from store and to exercise the right set out in (i).

# Catalogue Subscription

7 Maginnity Street, Wellington  
PO Box 224, Wellington 6140, New Zealand  
P +64 4 472 1367  
E info@dunbarsloane.co.nz  
(GST Reg. No. 11-250-866)

		Tick	NZ Cost	Europe/USA	Australia/Pacific
<b>Antique &amp; Artefacts</b>	Minimum of 3 catalogues per year		\$70	\$130NZ	\$100NZ
<b>Fine &amp; Applied Art</b>	Minimum of 3 catalogues per year		\$70	\$130NZ	\$100NZ
<b>Affordable Art</b>	Minimum of 2 catalogues per year		\$30	\$50NZ	\$45NZ
<b>Toys &amp; Dolls</b>	Minimum of 1 catalogues per year		\$15	\$30NZ	\$25NZ
<b>Tribal &amp; Maori Artefacts</b>	Minimum of 1 catalogues per year		\$25	\$50NZ	\$30NZ
<b>Rare Books, Maps</b>	Minimum of 2 catalogues per year		\$30	\$50NZ	\$45NZ

All costs are noted in New Zealand dollars. Postage within New Zealand included, overseas subscribers please add costs as noted.

## Contact details

Full name

Address

City

Country

Phone

Email

## Payment

I enclose my cheque payable to Dunbar Sloane Ltd for the above catalogues, alternatively please charge my credit card.

☐ Cheque (enclosed)

Credit card: ☐ VISA ☐ AMEX ☐ Mastercard (Please tick one)

Cardholder Name

Card Number

Expiry Date

Cardholder Signature

# Absentee Bidding Form

All absentee bids are to be submitted at least 24 hours before the auction

7 Maginnity Street, Wellington  
PO Box 224, Wellington 6140, New Zealand  
P +64 4 472 1367  
F +64 475 7389  
E info@dunbarsloane.co.nz

Type of Auction

Auction Date

Please bid on my behalf at the above sale for the following lots. These bids are to be executed as low as permitted by other bids or reserves. I agree to comply with the Conditions of Sale as printed in the Catalogue.

Full name

Address

Phone

Email

**SIGNED**

**DATE**

Lot Number	Title / Description (use block letters)	Maximum Bid Price (excluding premium)

## International Bidders

Are required to provide photographic proof of id – passport or drivers licence together with proof of address – utility bill, bank or credit card statement etc. Failure to provide this will result in your bids not being processed. For higher value lots you may also be asked to provide a bank reference.

NOTE Individual bids registered by overseas bidders must be over \$500 in individual value.

## Please double check your bids and read terms below

Please submit your bid as early as possible. In the event of identical bids, the earliest will take precedence.

'Buy' bids are not accepted. The limit you leave should be the amount to which you would bid if you were to attend the Sale.

Buyers are reminded that there is a 17% buyer's premium on the hammer price plus GST on the premium. See conditions of sale.







