



STERLING SILVER & FINE JEWELLERY

16 SEPTEMBER 2020



G R A F F





STERLING SILVER FINE & ESTATE JEWELLERY

Wednesday 16 September 2020

SESSION ONE - 12 NOON START
Sterling Silver, Accoutrements & Gold Coins
Lot 1 - 224

SESSION TWO - 4PM START
Fine & Estate Jewellery
Lot 250 - 551

LIVE BIDDING

Please note we now offer our own live online bidding service.

For instruction see our website:

www.dunbarsloane.co.nz

Online registrations and absentee bids must be made at least 2 hours before the auction commences, or 24 hours if you are an International client

BUYERS PREMIUM

Each lot is subject to 18% + GST buyers premium

VIEWING SCHEDULE

Sunday 13th September 12noon - 3pm

Monday 14th September 9am - 4pm

Tuesday 15th September 9am - 4pm

Wednesday 16th September 9am - 11am

ENQUIRIES

Silver: Anthony Gallagher

+64 4 472 1367 / antiques@dunbarsloane.co.nz

Jewellery: Bettina Frith

+64 4 472 1367 / info@dunbarsloane.co.nz

PO Box 224, Wellington 6140

www.dunbarsloane.com



ENTRIES CURRENTLY INVITED

Fine & Estate Jewellery

November 2020

Enquiries

Bettina Frith

+64 4 472 1367

jewellery@dunbarsloane.co.nz

Dunbar M Sloane

+64 9 377 5820

021 473 998

auckland@dunbarsloane.co.nz



ENTRIES CURRENTLY INVITED

Affordable & Costume Jewellery

September/October 2020

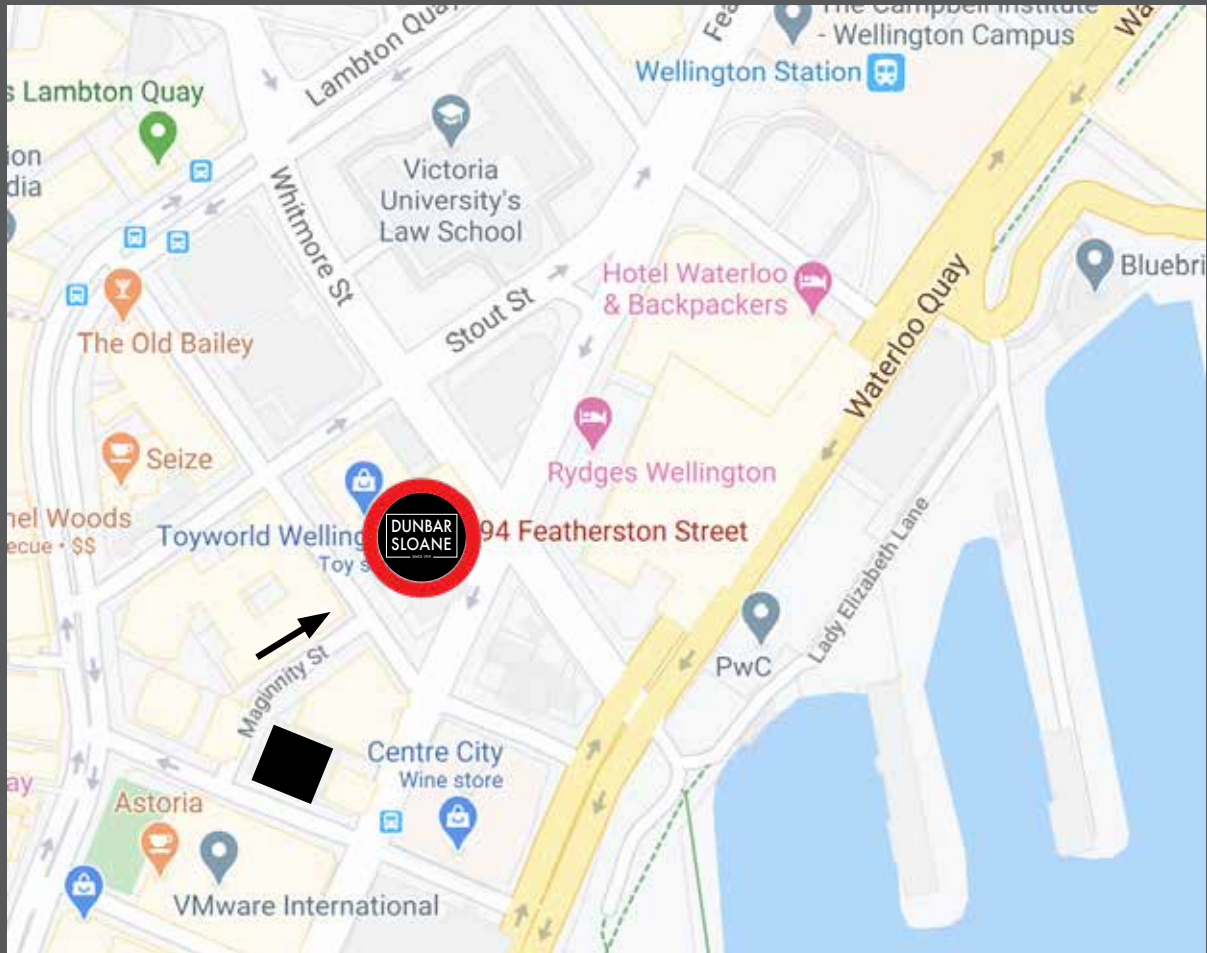
Enquiries

Bettina Frith

+64 4 472 1367

jewellery@dunbarsloane.co.nz

WE HAVE MOVED 94 FEATHERSTON STREET



Our Wellington auction house has shifted to new premises, located in Kiwi Wealth House corner of Featherston & Ballance Street.

Our phone number, email address and bank details remain unchanged.

We look forward to welcoming you to our new premises.

Dunbar Sloane Ltd
94 Featherston Street
Wellington CBD
www.dunbarsloane.com





SESSION ONE

STERLING SILVER

ACCOUTREMENTS

GOLD COINS

Wednesday 16 September 2020

12noon start

Lot 1 - 224

STERLING SILVER

- 1**
QE II S/S Card Tray of Geo III design, shaped circular on scroll legs, 15cm dia.
\$100 - \$200
- 2**
Geo V S/S Tazza, two handled with fluted bowl and stem, 13cm dia.
\$100 - \$200
- 3**
Geo III S/S Toast Rack, 6 division with fixed scroll handle, gadrooned base on lions paw feet, London 1798, 16cm width
\$300 - \$400
- 4**
Geo III S/S Sugar Basket, neo-classical design, quatrefoil outline with swing handle, gilded bowl and bright cut engraving, London 1796, maker Abraham Peterson, 15cm width
\$260 - \$360
- 5**
Art Nouveau Silver Coffee Cup & Saucer, decorated with stylised leaves, the saucer stamped Denoux
\$60 - \$120
- 6**
Two S/S Bon Bon Dishes, both with pierced decorations, one square the other boat shaped
\$100 - \$200
- 7**
Geo V S/S Two Handled Sugar Bowl, oblong baluster form on ball feet, Birmingham 1915
\$100 - \$200
- 8**
Morocco Cased Vict S/S Christening Mug, cylindrical shape engraved with ferns, London 1880
\$100 - \$200
- 9**
Early Vict S/S Christening Mug, footed urn shape with acanthus decorated scroll handle, London 1838
\$100 - \$200
- 10**
Georgian S/S Gravy Boat, punched decoration to the rim, acanthus top scroll handle on shell top legs with hoof feet, marks worn
\$100 - \$150
- 11**
Pair Geo V S/S Beaker Vases, plain footed trumpet form, engraved crest by The Goldsmith & Silversmiths Company, London 1915, 12cm height
\$100 - \$200
- 12**
Geo III S/S Sugar Basket, neo classical design with swing handle, bucket shaped bowl and engraved crest on square base, London 1785, maker Walter Brind
\$260 - \$380
- 13**
S/S Overlaid Dimpled Whisky Decanter, pierced design with flowerheads, 22cm height
\$300 - \$500
- 14**
Cased Pair Geo V S/S Bon Bon Dishes, stemmed form with waved rims, Birmingham 1927
\$120 - \$240
- 15**
Geo V S/S Stemmed Comport, with pierced chevron gallery, Birmingham 1917, 20cm dia.
\$150 - \$250
- 16**
Regency Sheffield Plate Coffee Pot, neo-classical vase shape with fluted top and base and applied and engraved silver roundel
\$60 - \$120
- 17**
S/S Sugar & Cream Set, octagonal baluster shape with beaded rims, together with S/S tea straining spoon
\$80 - \$120
- 18**
Vict S/S Footed Baluster Tankard, with acanthus topped scroll handle, 13cm height
\$350 - \$500
- 19**
S/S Circular Pin Cushion, 10cm dia., together with a stemmed bon bon dish and a circular bowl with three blind mice decorations
\$140 - \$240
- 20**
Set Six Russian 84 Standard Silver Beakers, with flared rims and stylised engraving, 8cm height
\$240 - \$380
- 21**
Iranian Silver Vase, baluster shape with beaded hexagonal rim and elaborately decorated with three shaped foliate panels, 15cm height
\$100 - \$200
- 22**
S/P Entree Dish, oblong shape with scroll cast borders and detachable handle, together with an ice bucket with engraved inscription and small Walker & Hall teapot
\$50 - \$100
- 23**
Small S/S Circular Saucer Dish, 12cm dia., together with three S/P ashtrays
\$60 - \$120
- 24**
Vict S/S Cake Basket, quatrefoil outline with entwined swing handle, pierced border and foot, 30cm width
\$600 - \$1,000
- 25**
Geo V S/S Oblong Three Piece Tea Set baluster part fluted form with engraved initial, London 1923, 30cm width
\$600 - \$900
- 26**
Small S/P Prize Cup & Oval Napkin Ring both with engraved inscriptions
\$30 - \$50
- 27**
QEII S/S Pepper Mill, London 1983
\$100 - \$200
- 28**
Geo V S/S Footed Trophy, with pierced twin supports, the tops applied with birds, Chester 1927, 15.5cm height
\$100 - \$200
- 29**
S/S Scallop Shape Butter Dish, together with S/P sugar basket, miniature S/S jug, circular dish inset with Chinese coin & pair of Eastern pin dishes.
\$100 - \$200
- 30**
Geo III S/S Coffee Pot, of Queen Anne design, traditional baluster form, the lid with urn finial, bird head spout, engraved crest, marks worn, London, 23cm height
\$800 - \$1,200
- 31**
Vict S/S Oval Baluster teapot, part fluted with embossed floral and rococo scroll decoration, London 1896
\$350 - \$500
- 32**
Edw VII S/S Coffee Pot footed vase shape with part fluting, Sheffield 1901
\$300 - \$500
- 33**
Ornate Cased Eight Piece Silver Gilt Cruet Set by Henry Birks & Sons Montreal, comprising four glass lined oval salts and matching spoons
\$200 - \$300
- 34**
Three Sheffield Plate Wine Coasters, of sizes
\$60 - \$120



- 35**
Victorian S/S Cream Jug footed baluster form decorated with florals and scrolls and engraved initials, London, date letter indistinct
\$80 - \$140
- 36**
Late C19th European Silver Decanter Set the quatrefoil shaped stand with tapering central column, two blue flashed glass decanters with chained stoppers, 23cm length
\$300 - \$600
- 37**
Large WMF Cut Crystal Vase of tapering form the S/P mount with flared rim, 31cm height
\$120 - \$240
- 38**
WMF Art Nouveau S/P Table Centre quatrefoil outline with twin scrolling handles and pierced border, with original glass liner, 33cm width
\$80 - \$160
- 39**
Orivit Three Piece Tea Set circular shape with a floral band
\$60 - \$120
- 40**
Edw VII S/S Sugar Bowl with dragon handles, fluted body with embossed sunflower decoration, Birmingham 1904
\$100 - \$200
- 41**
Pair Edw VII S/S Trumpet Vases with pierced tops and bases, by Walker & Hall, Sheffield, 1902, 31cm height
\$400 - \$700
- 42**
19th Sheffield Plate Coffee Pot Queen Anne design, plain baluster shape with fluted bird form spout
\$40 - \$80
- 43**
Pair Geo III Style S/P Salvers shaped circular on hoof feet, 24cm dia.
\$100 - \$200
- 44**
QEII S/S Card Tray shaped circular on hoof feet, 16cm dia.
\$100 - \$200
- 45**
Geo V S/S Card Tray shaped circular with scroll and shell cast rim on scroll feet, London 1910, 22cm dia.
\$300 - \$400
- 46**
Geo VI S/S Card Tray shaped circular on scroll feet, Sheffield 1940, 20cm dia.
\$300 - \$400
- 47**
Victorian S/S Circular Salver with gadrooned rim and floral border, the centre engraved with initials on ball and claw feet, London 1846, 27cm dia.
\$400 - \$600
- 48**
Victorian Cased Ivory & S/S Mounted Presentation Baton Presented to Mr John Tait By The Peebles Choral Society (Scotland) 26th April, 1887, together with two other engraved and related plaques an newspaper cuttings.
Mr Tait arrived in Nelson from Edinburgh with his family in 1914 and became church organist at All Saints Church. As one of Nelsons early music teachers, and as a composer his choral works were performed widely in New Zealand
\$400 - \$600
- 49**
Geo V S/S Three Piece Tea Set squat circular shape on hoof feet, Sheffield 1919
\$500 - \$800
- 50**
Pair Geo V S/S Specimen Vases footed trumpet shape with pierced rims, Birmingham 1912, 19 & 15cm heights
\$100 - \$200
- 51**
Three S/S Specimen Vases two trumpet shaped, the other Jack in the Pulpit form, of sizes
\$150 - \$250
- 52**
Two Pair Geo V S/S Specimen Vases footed crocus shape, Birmingham 1912, together with a larger single vase, (of sizes)
\$150 - \$250
- 53**
Edw VII S/S Cigarette Box oblong shape, the lid with engraved initials, London 1903, 14cm width
\$140 - \$260
- 54**
Small Edw VII S/S Cream Jug embossed decoration and engraved dates, Birmingham 1901, together with S/S Mustard pot & unmarked jug, the base stamped L Watkin
\$60 - \$120
- 55**
Cased Pair Edw VII S/S Napkin Rings Birmingham 1904, together with two other pairs & five single
\$100 - \$200
- 56**
Pair Novelty S/S Penguin Form Peppercettes together with pair of acorn shaped S/S peppercettes, S/S gilt lidded wooden jewellery box and S/P pear ornament
\$100 - \$200
- 57**
Geo V S/S Eight Piece Cruet Set circular tapering shape, engine turned engraving comprising, pair salts, pair peppercettes, mustard pot & three spoons, Birmingham 1934
\$160 - \$280
- 58**
.900 Indian Silver Footed Fruit Bowl traditional embossed decoration to the body of wild animals including elephants, tigers and antelopes, 23cm dia.
\$300 - \$500
- 59**
Large Indian Silver Bowl circular shape with traditional hand hammered design of continuous figures in high relief, 24cm dia.
\$500 - \$800
- 60**
Geo V S/S Two Handled Oblong Banquet Drinks Tray with shell and gadrooned rim and handles, Sheffield, 1921, 64.5cm width
\$2,000 - \$3,000
- 61**
Edw S/P Oval Two Handled Drinks Tray with foliate engraved centre and border and crest on four low feet, 62cm width
\$100 - \$200
- 62**
Edw VII S/S Gravy Boat plain form with waved rim on scroll legs with hoof feet, Birmingham 1902, together with S/P oval entree dish and cover and S/P sugar and cream set
\$100 - \$200
- 63**
Geo V S/S Bon Bon Bowl with pierced border, engraved date to centre, Birmingham 1919, together with S/P tazza
\$100 - \$150
- 64**
S/S Milk Jug & Sugar Bowl of quatrefoil shape, Birmingham, date letter worn
\$100 - \$150
- 65**
Pair Geo V S/S Specimen Vases plain trumpet shape, Chester 1914, 17cm height, together with smaller example
\$100 - \$200



49



25



60



48



45



46



47



30



41



91

- 66 Miguel Pineda (Mexico) Silver Plate & Enamel Mayan Aztec Vase** slightly tapering cylindrical shape decorated with two ancestral figures, signed, 18cm height \$100 - \$200
- 67 Cased Pair S/S Salts** circular with waved rims, fluted bodies on ball feet with matching spoons, together with pair S/P wine coasters \$100 - \$200
- 68 Six Various S/S Napkin Rings** \$60 - \$120
- 69 Dutch Silver Tea Caddy** oval shape with detachable lid, the body with a continuous relief decoration of carousing period figures \$200 - \$300
- 70 Geo III S/S Cream Jug** baluster shape, punched rim on beaded circular base, London 1774 \$100 - \$200
- 71 Geo III S/S Cream Jug** baluster shape, acanthus top handle on scroll legs with hoof feet, London 1764 \$100 - \$150
- 72 WMF S/P Sugar & Cream Set On Stand** with gadrooned edge, together with an Orivit s/p sugar bowl with fixed loop handle, detachable lid and glass liner \$60 - \$120
- 73 Modern S/S Photograph Frame By Birks** in original box, 22 x 17.5cm \$100 - \$200
- 74 Modern S/S Photograph Frame** plain upright oblong, 20 x 15cm \$100 - \$200
- 75 Large WMF Comport** with stylised fruit border on ribbed tapering column and circular base, 37cm dia. \$200 - \$300
- 76 Cased Geo V S/S Eight Piece Cruet Set** baluster shape comprising pair of pepperettes, pair of salts, mustard pot and 3 spoons, Birmingham 1921 \$140 - \$260
- 77 Four Various Small Silver Items** comprising S/S baluster sugar caster with engraved initials, S/S telescopic sportsman's drinking cup, .830 silver salt and Eastern silver ashtray with camel finials \$140 - \$260
- 78 S/S Wine Taster** traditional form with pierced single handle, 10cm dia, together with a table lighter in the form of an antique oil lamp and circular dish, the centre embossed in relief with a dogs head \$140 - \$280
- 79 Square S/P Drinks Tray** with leaf and scroll cast rim and engraved centre on scroll feet, 41 x 41cm \$50 - \$100
- 80 Geo III Style S/P Salver by Mappin & Webb** shaped circular on scroll legs with hoof feet, engraved presentation inscription to the base, 36cm dia. \$60 - \$120
- 81 S/P Salver & Drinks Tray** both with engraved centres, 29 and 35cm dia. \$50 - \$100
- 82 Geo V S/S Sugar Bowl** with twin ribbon handles on scroll legs, Birmingham 1923, together with two vase shaped pepperettes, two napkin rings & three various spoons \$120 - \$240
- 83 European S/P Figural Table Centre** of a young woman dancing with a garland of flowers above her head, 21.5cm height \$50 - \$100
- 84 Composed S/S Three Piece Christening Set** in fitted burgundy morocco case, together with set of six S/S napkin rings \$120 - \$180
- 85 Cased Walker & Hall S/P Presentation Trowel** the ivory handle with S/S mounts, the blade with engraved masonic inscription dated 1946 \$120 - \$240
- 86 Small Silver Filigree Sailing Ship** in a glazed display case, 18cm width \$40 - \$80
- 87 Cased Geo V S/S Christening Mug** plain footed form, Birmingham 1917 \$100 - \$200
- 88 Cased Geo VI S/S Gravy Boat & Spoon** Birmingham 1939 \$100 - \$200
- 89 Cased Pair S/S Pepperettes** cylindrical fluted shape with pierced dome tops, London 1886 \$60 - \$120
- 90 Two Pair S/S Cruets** comprising an oval mustard pot and salt with pierced bodies, together with pair of Scottish oval salts, all with blue glass liners \$100 - \$200
- 91 Geo V S/S Coffee Pot** baluster form, the lid with flaming urn finial, gadrooned rim and base, engraved crest, London 1916. 21cm height \$200 - \$300
- 92 9ct Gold Horse Racing Cup c1940** The Douro Cup Handicap (Hack) 1940 One Mile Won By Mr J M Samsons with Lord Puck, the cup Presented by Mr H P F Blundell, 149 grams, on oak socle, 25.5cm height. with fitted oak case. Henry Blundell was born in Wellington on May 9, 1872. He was the second son of John Blundell and Kathleen nee Willis, and grandson of the Henry Blundell who founded the evening Post newspaper in 1865. \$5,000 - \$6,000
- 93 Five Various Georgian & Victorian Salt/ Mustard Spoons** all fiddle pattern with engraved initials or crest, together with Geo III style circular salt, 1940 \$100 - \$200
- 94 Six S/S Napkin Rings** comprising one matching pair and three single, all circular shaped \$40 - \$80
- 95 Cased Pair Geo V Heavy S/S Napkin Rings** plain oval, Sheffield 1930, together with a three piece S/S circular fluted cruet set and pair of S/S rimmed glass salts and spoon \$100 - \$200
- 96 Geo III S/S Circular Salt** together with S/S pepperette, oblong S/S Mustard pot and oval faceted glass mustard pot with S/S lid \$120 - \$240
- 97 Art Deco S/S Engine Turned Cigarette Case** together with two S/S napkin rings & set four S/P napkin rings \$60 - \$120



92



209



210



211



213



214



216



217



223



224



219



220



113



119



100



118



124

CUTLERY

- 98**
Pair Fancy S/S Salad Servers with floral, fruit and scroll decorated handles
\$100 - \$200
- 99**
Part Suite S/P Fiddle Pattern Cutlery comprising twelve table forks, twelve dessert forks, twelve dessert spoons & ten teaspoons, all with engraved monogram
\$40 - \$80
- 100**
Set Six Geo IV S/S Dessert Forks fiddle pattern with engraved crest, London 1821, makers William Eley & William Fearn
\$300 - \$400
- 101**
Cased Pair S/P Grape Scissors with rococo scroll handles (case af)
\$60 - \$120
- 102**
Geo III S/S Meat Skewer traditional tapering form with fluted ring handle, London 1807, 28cm length
\$120 - \$240

- 103**
An Interesting Geo III Scottish S/S Teaspoon fiddle pattern, Edinburgh 1812, makers initial H, the handle engraved LXX, the reverse engraved Seventieth. The 70th Regiment (Surrey) arrived in New Zealand in three ships in 1861 and saw action in Taranaki and Napier, with a detachment in Dunedin during 1861-1863.
\$300 - \$500

- 104**
Set Four European 84 Standard Silver Tablespoons fiddle pattern, stamped Hempel
\$140 - \$260

- 105**
Pair Geo III S/S Tablespoons by William & Peter Bateman Old English pattern, London 1810 & 1812
\$100 - \$200

- 106**
Small Group Mixed Flatware, comprising two pairs of C19th S/S handled steel bladed pistol grip carving knives and forks, cased S/P fish servers, pistol grip butter knife and 3 small Asian pieces
\$100 - \$200

- 107**
Four George Jensen S/S Gilt Annual Floral Fork, Knife & Spoons, comprising three for 1979, the other 1972
\$140 - \$260

- 108**
Set Eight S/S Teaspoons with floral decorated handles, together with set six S/S gilt coffee spoons with eagle tops.
\$160 - \$280

- 109**
Composed Set Eight Georgian S/S Teaspoons Old English pattern with engraved crest, various makers, a pair of S/S fiddle pattern sugar tongs and a pair of Old English pattern tongs
\$120 - \$180

- 110**
Three boxed George Jensen S/S Gilt Annual Floral Spoons for 1978, 79 & 80, together with a Jensen letter opener
\$120 - \$240

- 111**
Cased Geo V S/S & MOP Handled Bread Knife Sheffield 1912
\$40 - \$80

- 112**
Pair Edw VII S/S Gilt Apostle Top Spoons rattail pattern with wide egg shaped bowls, London 1909
\$80 - \$160

- 113**
Extensive 140 Piece S/P Kings Pattern Cutlery Suite comprising, twelve table forks, twelve soup spoons, four sauce ladles, two pair salad servers, pair berry spoons, large serving/basting spoon, twelve ice cream/sundae spoons, twelve dessert spoons, thirteen dessert forks, six cake forks, two cake slices, two bread forks, pickle fork, three butter knives, twelve table knives, twelve dessert/butter knives, jam spoon, pair salt spoons, three piece carving set, bread knife, fish slice, four tablespoons, twelve coffee spoons and six teaspoons
\$500 - \$800
- 114**
Assorted S/S Cutlery Items (7) comprising shovel form caddy spoon, two sifter spoons, jam spoon, salt spoon & two butter knives
\$50 - \$100
- 115**
Five Various S/P Flatware Items comprising fiddle pattern soup ladle, fiddle pattern basting spoon, bright cut basting spoon, cake slice & grape scissors
\$50 - \$100
- 116**
Pair Edw VII Fancy S/S Gilt Serving Spoons with fluted ball finials, spiral handles and scrolling floral engraved bowls, Sheffield 1901
\$100 - \$200
- 117**
Small Group S/S & S/P Flatware etc including egg spoon and pusher, souvenir and teaspoons, S/P meat skewer, S/P Gin decanter label etc
\$50 - \$100
- 118**
Three Geo V Irish S/S Teaspoons fiddle pattern with engraved crest, Dublin 1827, together with pair Victorian fiddle & thread pattern teaspoons
\$100 - \$150
- 119**
42 Piece Scottish S/S Fiddle Pattern Suite of Cutlery comprising six table forks, six tablespoons, six dessert forks and six spoons, six teaspoons, six table knives and six dessert knives, Glasgow 1831-33, composed two separate makers
\$1,200 - \$1,800
- 120**
Wm IV Scottish S/S Sifter Ladle Old English pattern with bright cut engraving, Glasgow 1832, together with S/S double lipped sauce ladle, with spiral twist handle
\$100 - \$200
- 121**
.800 Silver Soup Ladle by C Wirth, together with twelve various S/S teaspoon
\$120 - \$180
- 122**
Seven Various S/S Spoons comprising Geo III Old English tablespoon by John Lambe, pair Geo III Old English dessert spoons, fiddle pattern dessert spoon & three fiddle pattern teaspoons
\$100 - \$200
- 123**
Four Georgian S/S Tableforks Hanoverian pattern, one by William Eley, William Fearn & William Chawner, London 1810 and three by William Chawner II 1830
\$100 - \$200
- 124**
Set Five Geo III Hester Bateman S/S Dessert Spoons fiddle pattern, London 1794
\$120 - \$240
- 125**
Small Group S/S & S/P Flatware including set of six S/S & floral enamel top coffee spoons, Dutch fancy silver strainer spoon, various tea, salt & other spoons & oddments
\$100 - \$200
- 126**
Part Set S/S & MOP Handled Dessert Knives & Forks comprising six S/S forks, two knives, plus two MOP handled S/P knives & three bone handled S/S knives
\$100 - \$200
- 127**
Set Six Edw MOP Handled Dessert Knives & Forks together with set of late Vict S/P fish knives & forks
\$60 - \$120
- 128**
Edw Oak Canteen Twelve Fish Knives & Forks with MOP handles and engraved blades
\$60 - \$120
- 129**
Assorted S/S Flatware (10) comprising eight various spoons, butter knife & bread fork together with S/S vesta case, cigarette case & shoe horn
\$100 - \$200
- 130**
Cased Set Six Edw S/P Fish Knives & Forks with bone handles, together with set six dessert knives & forks with decorative floral bands
\$50 - \$100
- 131**
Selection Mixed Flatware including Scandinavian examples, serving & tablespoons, enamel and horn end spoons, plated spoons sauce ladle etc together with plated tray
\$100 - \$200
- 132**
Oak Cased Victorian S/S Three Piece Christening Set with ivory handles and engraved decoration, Sheffield 1891, together with cased pair S/P fish servers & part set of five S/S handled afternoon tea knives in red morocco leather case
\$100 - \$200
- 133**
Three Cased Sets Cutlery comprising set six S/S Old English pattern teaspoons & tongs, Sheffield 1916, set six Dutch silver coffee spoons with floral handles, & set six bone handled fish knives and forks
\$100 - \$200
- 134**
Bone Handled Table & Butter Knives (25) together with pair late Victorian ivory handled carving forks, two knives & a steel
\$100 - \$200
- 135**
Selection Mixed Scandinavian S/S & S/Plate Cutlery comprising boxed set of Norwegian S/S coffee spoons with pierced scrolling handles, boxed fork and spoon, three various fancy cake slices, pair of grape scissors, fancy handled fish knife, three other fish knives with two matching forks, and nine Old English style dessert spoons
\$200 - \$400
- 136**
Part Set S/P Fiddle, Shell & Thread Cutlery comprising four tablespoons, five tableforks, and two dessert spoons, together with pair S/S handled fish servers & cased MOP handled bread knife (case af)
\$50 - \$100
- 137**
Cased Set Six Geo V S/S Coffee Spoons Old English pattern, Birmingham 1920
\$40 - \$80
- 138**
Cased Set Twelve Victorian S/S Teaspoons with associated bright cut tongs, Sheffield 1890
\$100 - \$150
- 139**
Set Six Geo VI S/S Coffee Spoons Art Deco design, Sheffield 1946, together with fancy Dutch silver cake slice and set of ivory handles, fish knives, forks and servers
\$60 - \$120
- 140**
Small Group Mixed Georgian & Later S/S Cutlery comprising pair of Geo III ice tongs by the Bateman family, with bright cut engraving, London 1786, a smaller pair of tongs by Walker & Hall, pair of Geo III Old English pattern teaspoons, Vict Kings pattern fork and spoon and Vict MOP handled knife and fork
\$140 - \$260

ACCOUTREMENTS

- 141**
Set Ten Siam Silver Menu Holders
together with a set of five gilded teaspoons and S/S specimen vase
\$100 - \$200
- 142**
Pair S/S Lidded Glass Powder Bowls squat circular with engraved chevron and swag decoration, 11cm dia.
\$80 - \$160
- 143**
Edw VII S/S Cigarette Case slightly bowed square shape with engraved scrolling decoration, Birmingham 1901.
\$50 - \$100
- 144**
S/S Sovereign Holder with engraved decoration and plain shield, together with small S/S scallop form salt
\$100 - \$200
- 145**
Vintage Leather & Silver Mounted Spectacles Holder with chatelaine clip and chain on original retailers card
\$50 - \$100
- 146**
Victorian S/S Oval Snuff Box hinged lid engraved C.B from E.W, Birmingham 1895
\$50 - \$100
- 147**
Edw VII S/S Topped Vesta Holder with ribbed spherical glass base, Birmingham 1909, 10cm dia
\$60 - \$120
- 148**
Victorian S/S Tea Caddy in the form of a Geo III knife box
\$140 - \$260
- 149**
Novelty Victorian Brass Fishing Creel Vesta Case 6cm width
\$100 - \$200
- 150**
Late Victorian Novelty Brass Mephistopheles Vesta Case 5.5cm height
\$100 - \$200
- 151**
Vict S/S Hip Flask plain oval shape, with detachable cup, marks rubbed.
\$140 - \$260
- 152**
9ct Gold Sovereign Holder, two division sprung interior, engraved decoration, lacks opening button
\$600 - \$800
- 153**
Two Antique S/S Purses both with engraved decoration and initials (of sizes) together with gold plated hunter cased pocket watch and silver open face small pocket watch (faults)
\$80 - \$140
- 154**
S/S Engine Turned Octagonal Compact together with S/S vesta case, engraved cigarette case & pocket watch, various dates & makers (af)
\$100 - \$200
- 155**
Geo III S/S Evening Purse oblong shape with chain, engraved initials, with internal ivory dance card and two small propelling pencils, Birmingham 1912, together with smaller plain slightly bowed S/S calling card case
\$100 - \$200
- 156**
Victorian Miniature Treen (Burr Walnut & Yewood) Quaichs traditional circular two handled form, 10cm width
\$80 - \$140
- 157**
Two S/S Pipe Tampers one with ringed decoration the other engine turned, both with internal spur
\$60 - \$120
- 158**
Miniature Portrait of an Elizabethan Lady together with a miniature portrait of an elderly gent and a silhouette of a lady in a veiled hat
\$100 - \$200
- 159**
Six Small S/S & S/P Items comprising S/S circular photo frame, an oval S/P frame, mote spoon, S/S circular two handled butter dish and two small S/S topped glass dressing table jars
\$100 - \$200
- 160**
Two S/S Topped Glass Scent Bottles, together with Chinese reverse painted glass snuff bottle
\$50 - \$100
- 161**
Miniature Magnifying Glass with ebonised wooden handle, 9cm length, together with a late Vict gilt metal seal formed as a birds talon holding a striated ball and a Chinese hardstone seal with shi-shi finial
\$60 - \$120
- 162**
Vict Carved Marine Ivory Snuff Box oblong shape, the hinged lid decorated with a vase of flowers, 7cm width
\$50 - \$100
- 163**
MOP Handled S/S Bladed Fruit Knife together with two miniature pocket knives, miniature folding button hook and modern S/S egg shaped pill box
\$60 - \$120
- 164**
Vict S/S Gilt Vesta Box oblong shape, the hinged lid with applied enamel roundel bearing monogrammed initials within a quatrefoil seed pearl surround, London 1862, 5.5cm width
\$100 - \$200
- 165**
Geo III Shagreen Etui Of Drawing Instruments traditional tapering form, the three division interior containing two folding compasses and another instrument, 13cm height
\$200 - \$400
- 166**
Two S/S Vesta Cases one formed as a kidney bean, the other plain, together with a small Japanese bronze pill box, the top and sides with applied decorative panels
\$100 - \$200
- 167**
Geo III Nutmeg Grater oval shape with engraved borders and original internal grater, Birmingham 1800, maker Thomas Willmore
\$140 - \$260
- 168**
Owen Mapp Carved Bone & Horn Snuff Box the lid decorated with a dragon, 6.5cm length
\$80 - \$160
- 169**
Two S/S Engine Turned Cigarette Cases of sizes, 1940 & 1946
\$100 - \$200
- 170**
Geo V & Geo VI S/S Cigarette Cases both oblong, one plain the other engine turned, London 1903 & 1937
\$120 - \$200
- 171**
Pair Edw VII S/S Mounted Scent Bottles, the ribbed tapering pink glass bodies with star cut and fluted decorations and faceted stoppers (one as found), 15cm height, and another square cut glass bottle the gilt metal mount stamped ASTRIS L.T. PIVER PARIS
\$140 - \$260
- 172**
Set Six Norwegian S/S & Enamel Top Table Cruets, on tapering cut glass bodies, comprising five with green enamel and one with white tops.
\$100 - \$200



144



148



149



150



152



164



161



165



166



167



168



170



218



218a



221

- 173**
Small C19th French Ivory Bound Religious Book applied with a flower in relief to the cover, (front joint loose), together with a small ivory and gilt metal prayer book in leather case, a small alabaster, gilt metal and coloured enamel holy water font and a novelty wooden inkwell in the form of a stetson
\$120 - \$240
- 174**
Set Six Geo V S/S & Painted Menu Holders By Sampson Mordan & Co Ltd circular stands and bases, each hand painted with a different British game bird, 4cm dia.
\$400 - \$800
- 175**
S/S Sovereign Holder & Vesta Case together with S/S fob watch case, MOP trinket box, miniature Salter spring balance and two other minor pieces
\$80 - \$140
- 176**
Miniature Corkscrew with bone handle, together with a small Venetian style glass flask & Victorian floral painted scent flask
\$100 - \$200
- 177**
Three Various S/S Vesta Cases one formed as a clam, the other two plainer examples, one with engraved initial and dated April 12th 1909
\$100 - \$200
- 178**
Small Japanese Ivory Lady's Purse Mirror folding form, the front decorated with two monkeys, (mirror cracked) together with small paper fold, two novelty toggles and other
\$60 - \$120
- 179**
C19th Enamel Painted Button depicting a seated classical muse in a champlévé style bronze frame
\$50 - \$100
- 180**
Two S/S Photo Frames one circular, one oblong, together with three small S/S pin dishes with floral embossed rims
\$100 - \$200
- 181**
Victorian S/S Folding Pocket Magnify Glass circular MOP cover
\$50 - \$100
- 182**
Vict Ruby Glass Double Ended Scent Flask the gilt metal end with engraved decoration, together with a gilt metal holder, two small scent funnels, and novelty cooking pot key ring
\$80 - \$160
- 183**
Grand Tour Gilt Metal & Enamel Portrait Miniature octagonal shape depicting a young woman, with a bevelled mirror to the reverse, 15cm height
\$100 - \$200
- 184**
Geo V S/S Purse plain bowed form with carrying chain, engraved name to lower left, Birmingham 1916
\$70 - \$130
- 185**
Six Various Vintage S/S & Gold Plated Propelling Pencils
\$100 - \$200
- 186**
S/S Cigarette Case & Eight Vintage Cigarette Holders including cloisonné, carved ivory etc
\$60 - \$120
- 187**
Four Vintage Lighters comprising two Dunhill, one in original box, .800 engraved silver example and other
\$50 - \$100
- 188**
Two C19th French Miniature Portraits head and shoulder studies of two women, one in gilt metal frame the other copper, together with 9K scrap gold lady's watch case, and small Lawrence Ewing crackle glazed bowl and cover
\$200 - \$400
- 189**
S/S Cigarette Case slightly bowed shape with engraved initials, together with a simulated tortoiseshell case
\$50 - \$100
- 190**
Miniature S/S Table & Two Chairs all decorated with panels of cherubs
\$50 - \$100
- 191**
C19th Century European Enamel Purse painted with a central floral spray (faults), a hand painted fan with figures in a landscape, s/p child's rattle in the form of a pony with bone teething ring and a painted opaque glass needle case
\$60 - \$120
- 192**
Art Deco S/S Mounted Alligator Skin Clutch Bag together with another leather clutch bag
\$80 - \$160
- 193**
Small Persian Jambiya Dagger traditional form with wooden handle, engraved silver mount, blade and sheath, 21cm height
\$80 - \$160
- 194**
S/P Fox Head Stirrup Cup 13cm height, together with S/S bottle stopper with dog head finial
\$100 - \$200
- 195**
S/S Napkin Ring & Small S/S Handled Brush together with a S/S spoon, small magnifying glass and novelty brass ashtray in the form of a fly
\$60 - \$120
- 196**
Three Piece S/S Dressing Table Set engine turned comprising two glass dressing table jars and hand mirror, together with miniature S/S hand mirror, MOP handled S/S baby's rattle, small silver pomander with bloodstone seal to the base and five small vanity implements.
\$160 - \$280
- 197**
Eight Vintage Propelling Pencils & Nib Pens with a qty of spare nibs
\$60 - \$120
- 198**
S/S Mesh Evening Purse together with S/S mounted leather purse and three various others
\$100 - \$200
- 199**
Geo V S/S Five Piece Dressing Table Set comprising two pair of brushes and a hand mirror, engine turned decoration, Birmingham 1928, together with an ebonised hand mirror with applied S/S band and S/S mounted nail buffer
\$140 - \$280
- 200**
Three Pair Antique Japanned Opera Glasses of sizes
\$60 - \$120
- 201**
Tunbridgeware Oblong Trinket Box with traditional finely inlaid decoration to the lid, 10cm width, together with cylindrical papier mache snuff box with portrait of a lady
\$60 - \$120
- 202**
Small Eastern Kris with horn handle and blade and filigree sheath, 21cm length, together with pair late Vict S/P candle snuffers
\$80 - \$160
- 203**
Group Mixed Small S/S Items comprising, matchbox holder, miniature prize cup, four propelling pencils, letter opener and box and tube of refill leads
\$80 - \$160



224

- 204**
Vict Pocket Barometer & Case (case hinge broken), together with a smaller pocket compass (glass cracked) and cased pair of binoculars
 \$60 - \$120
- 205**
Geo V S/S Five Piece Dressing Table Set quatrefoil outline with ribbon and swag engraving centred by initials, Birmingham 1921, comprising 2 pairs of brushes and a hand mirror, together with a S/S mounted comb and nail file
 \$160 - \$280
- 206**
Five Various S/S Vanity Items comprising, two hand mirrors, two shoe horns & button hook
 \$100 - \$200
- 207**
Six Vintage Dressing Table Accessories comprising a gilt metal oval hand mirror and brush, each with a painted central panel of 18th century sweethearts, pair of ivory backed brushes and a pair of S/S backed brushes (one af)
 \$100 - \$200
- 208**
Art Deco .900 Silver Card Case square shape with bright cut floral and geometric pattern
 \$100 - \$200
- GOLD COINS**
- 209**
1914 Gold Sovereign Pendant 9ct plain coin pendant frame
 \$400 - \$600
- 210**
1883 Gold Half Sovereign
 \$200 - \$300
- 211**
1997 Australian Nugget 1/4oz .9999 Gold Coin uncirculated
 \$600 - \$800
- 212**
Iran 1/2 Pahlavi Gold Coin pendant mount attached (.900 fineness)
 \$300 - \$500
- 213**
Iran 1/2 Pahlavi Gold Coin pendant mount attached
 \$300 - \$500
- 214**
Iran 1/4 Pahlavi Gold Coin mounted as a cuff-link in 14ct
 \$200 - \$400
- 215**
Iran 1/4 Pahlavi Gold Coin mounted on tie clip of 14ct
 \$300 - \$500
- 216**
1904 Gold Sovereign Pendant mounted on 9ct neck chain 38cm
 \$700 - \$1,000
- 217**
1887 Gold Sovereign Pendant mounted on heavy 9ct curb link chain 38cm
 \$1,000 - \$1,400
- 218**
Gold Plated Circular Sovereign Holder dated 1911
 \$100 - \$200
- 218a**
9ct All Engraved Propelling Pencil
 \$200 - \$400
- 219**
Credit Sussie 5gm Fine Gold 999.9 Pendant on 14ct box link neck chain
 \$500 - \$800
- 220**
10gm Fine Gold 999.9 Pendant removeable 14ct hinged frame on 9ct curb link chain
 \$800 - \$1,000
- 221**
Edwardian 9ct Slightly Curved Vesta Case with applied initials to cover
 \$700 - \$900
- 222**
Fine Silver .999 1/2 Ounce Troy Pendant
 \$40 - \$80
- 223**
14ct Iranian Shield Pendant on fine 9ct chain piece
 \$100 - \$200
- 224**
18ct Mounted Five Sovereign Bracelet sovereigns in double scroll framed mounts with part textured finish dated 1887, 1917, 1901, 1880, 1900
 \$4,500 - \$6,000

Cartier





SESSION TWO

FINE & ESTATE JEWELLERY

Wednesday 16 September

4pm start

Lot 250 - 551

- 250**
18ct Solitaire Diamond Ring
eight claw set old European cut diamonds
approx 0.75cts with two single cut shoulder
diamonds
'20 Replacement \$7,500
\$1,500 - \$2,000
- 251**
18ct Solitaire Diamond Ring
raised six claw set round brilliant cut approx
0.50cts with six channel set shoulder
diamonds
\$1,600 - \$2,000
- 252**
18ct Five Stone Diamond Eternity Band
channel set round brilliant cut approx
1.0cts tdw
\$1,200 - \$1,600
- 253**
18ct White Gold Single Emerald Ring
four corner claw set emerald cut bright green
emerald approx 1.55cts
'20 Insurance \$5,300
\$1,600 - \$1,800
- 254**
Pair 18ct White Gold Emerald Earrings
each of single pear cut bright emerald
approx 2.30cts total, pierced
'20 Insurance \$7,800
\$2,500 - \$3,000
- 255**
**14ct White Gold Seven Stone Diamond
Floret Cluster Ring**
claw pave set on split shoulders round
brilliant cut approx 0.50cts tdw
'19 replacement \$3,000
\$1,000 - \$1,200
- 256**
14ct Eight Stone Diamond Band Ring
two diagonal band pave set with round
brilliant cut diamonds approx 0.50cts tdw
'20 replacement \$4,100
\$1,400 - \$1,800
- 257**
14ct 13stone Emerald & Diamond Ring
modern design central rectangular emerald
approx 1.03cts with stepped shoulders pave
set with baguette cut diamonds approx
0.75cts tdw
\$2,000 - \$2,600
- 258**
18ct Diamond Bridge Ring Trio
1. three stone diamond raised claw set round
brilliant cut with six channel set shoulder
diamonds approx 0.39cts, 0.238cts x2
'20 Replacement \$5,699
2. pair five stone diamond curve bands,
matching above approx 0.42cts tdw each
ring
'20 Replacement \$3,290 each ring
\$3,800 - \$4,200
- 259**
18ct 12stone Diamond Eternity Band
channel set round brilliant cut approx
1.02cts tdw
'20 Replacement \$3,199
\$800 - \$1,200
- 260**
All Platinum Diamond Cluster Ring
central round brilliant cut approx 1.50cts with
pave diamond surround and fancy gallery, 24
grain/pave set shoulder diamonds
'19 RMV \$15,000
\$5,000 - \$7,000
- 261**
All Platinum Diamond Band
continuous double band of grain and pave
set diamonds round brilliant cut approx
1.50cts
'19 NRV \$7,300
\$1,500 - \$2,000
- 262**
All Platinum Solitaire Diamond Ring
modern corner claw set princess cut
diamond approx 2.264cts
'13 Replacement \$28,000
\$8,000 - \$10,000
- 263**
All Platinum Solitaire Diamond Ring
four pillar claw set 'Tycoon' rectangular
mixed cut diamond approx 3.01cts
'15 Replacement \$162,600
\$50,000 - \$60,000
- 264**
**Pair Graff, London Est 1960 All Platinum
Diamond Pendant Earrings**
each of solitaire diamond head approx
0.72cts supporting five articulating
diamond drop strands each ending in pear
cut diamond
total of 186 round brilliant cut diamonds, ten
pear shape diamonds approx 9.94cts tdw,
pierced
'20 Replacement \$130,000
\$50,000 - \$60,000
- 265**
**Chaumet, Paris 18ct White Gold 75stone
Diamond 'Le Grand Frisson' Cluster Ring**
modern scattered individual box setting
round brilliant cut approx 2.04cts tdw with
36 diamonds pave set to the split shoulders
approx 0.54cts tdw
'20 NRV \$37,000
\$12,000 - \$15,000
- 266**
**Chaumet 18ct White Gold 43stone Pink
Sapphire and Diamond 'Bee' Necklet**
central bee pave set with 37 diamonds and
pink sapphire head with diamonds and
sapphires mounted to modern cable link
chain 41.5cm length
'20 NRV \$15,000
\$5,000 - \$8,000
- 267**
**Pasquale Bruni, Italy 18ct White Gold
202stone Diamond & Sapphire
Articulated Butterfly Ring** body set with
four round brilliant cut diamonds approx
0.56cts with white and black diamonds,
sapphires pave set to the wings
'20 NRV \$20,000
\$6,000 - \$8,000
- 268**
**Pair Pasquale Bruni, Italy 18ct White Gold
Diamond Cluster Earrings**
each of individual floret clusters, total for
both earrings 270 round brilliant cut approx
1,62cts, pierced
'20 NRV \$32,000
\$10,000 - \$14,000
- 269**
**Pasquale Bruni, Italy 18ct White Gold
Diamond Heart Pendant**
frame of individual floret clusters, 306 round
brilliant cut diamonds approx 1.90cts tdw
'20 NRV \$35,000
\$10,000 - \$15,000
- 270**
**Pasquale Bruni, Italy 18ct White Gold
Diamond Four Leaf Clover '4Love' Cluster
Ring**
all pave set with 300 round brilliant cut
diamonds approx 2.40cts tdw
'20 NRV \$35,000
\$10,000 - \$15,000
- 271**
**Pasquale Bruni, Italy 18ct White Gold
Diamond Four Leaf Clover '4Love' Cluster
Pendant**
matching above ring pave set with 260 round
brilliant cut diamonds approx 3.50cts tdw
'20 NRV \$29,000
\$10,000 - \$14,000
- 272**
**Pair Pasquale Bruni, Italy 18ct White Gold
Diamond Flower Head Earrings**
each petal design pave set with 150
diamonds approx 1.97cts tdw, pierced
'20 NRV \$32,000
\$10,000 - \$14,000
- 273**
**Pasquale Bruni, Italy 18ct White Gold
Topaz, Pink & Blue Sapphire Vanita Ring**
heart dome design set with central oval
topaz all pave set with 195 pale blue
sapphires, light & dark pink sapphires
'20 NRV \$20,000
\$6,000 - \$8,000
- 274**
**Pasquale Bruni, Italy 18ct White Gold
Diamond & Pink Sapphire Heart Ring**
wide concave band with 48stone diamond
heart, 120stone pink sapphires pave
surround
'20 NRV \$23,900
\$8,000 - \$10,000



264



264



283



262



346



263



294



301



297



295

- 275**
Pair Pasquale Bruni, Italy 18ct White Gold Diamond and Pink Sapphire Heart Earrings
 each of concave design all pave set 27 diamond heart surrounded with 36 sapphires, pierced
 '20 NRV \$17,000
 \$5,000 - \$6,000
- 276**
Pasquale Bruni, Italy 18ct White Gold Diamond and Pink Sapphire Heart Pendant
 27stone diamond heart with surround of 38 pink sapphires
 '20 NRV \$10,000
 \$3,000 - \$4,000
- 277**
Pasquale Bruni, Italy 18ct White Gold Diamond Star Pendant
 all finely pave set 176 round brilliant cut diamonds approx 1.65cts on 18ct yellow gold bead chain 50cm length
 '20 NRV \$10,000
 \$3,000 - \$4,000
- 278**
Pair Pasquale Bruni, Italy 18ct White Gold Diamond Earrings
 each of central hinged earring pave set panel of 110 diamonds, fancy pierced panel set with cabochon ruby, approx 5.50cts total tdw for both earrings
 '20 NRV \$39,000
 \$13,000 - \$15,000
- 279**
Pasquale Bruni, Italy 18ct White Gold Diamond Heart Pendant
 pave set with 145 round brilliant cut diamonds approx 2.80cts with multi-heart pierced back on fine chain
 '20 NRV \$24,000
 \$8,000 - \$10,000
- 280**
Pair 18ct White Gold Turquoise & Diamond Cluster Earrings
 each of central diamond floret with surround of six turquoise and diamond florets, total of 72 turquoise, 74 diamonds approx 1.45cts tdw, pierced (one turquoise missing)
 '20 NRV \$13,000
 \$4,000 - \$5,000
- 281**
18ct White Gold Italian Topaz Cluster Dress Ring
 dome design centrally set with large cushion cut topaz approx 10.39cts surround of 42 diamond, on frame of 36 topaz gems
 '20 NRV \$13,700
 \$4,000 - \$5,000
- 282**
Sterling Silver 178stone Topaz & Sapphire Hinged Snap Bangle
 all individually claw set topaz with scattered dark blue sapphire flash panels (one sapphire missing)
 '20 NRV \$6,300
 \$2,000 - \$2,500
- 283**
Cartier Platinum Solitaire Engagement Ring
 four claw set round brilliant cut 0.78cts the ring is with original boxes, Cartier jewellery care kit and two 200ml bottles of Cartier champagne
 Purchase docket and diamond certificates
 \$6,000 - \$8,000
- 284**
Tiffany & Co All Platinum Solitaire Diamond Ring
 four corner claw emerald cut diamond approx 0.33cts
 '20 NRV \$5,900
 \$1,800 - \$2,000
- 285**
14ct White Gold Three Stone Diamond Bridge Ring
 raised four claw central princess cut approx 0.50cts with two side princess cut and eight channel set shoulder diamonds approx 1.50ct tdw
 '20 replacement \$6,700
 \$2,000 - \$2,500
- 286**
All Palladium Single Aquamarine Ring
 emerald cut aquamarine approx 2.86cts in modern setting with rub-over split shoulders
 '20 Replacement \$9,800
 \$3,000 - \$4,000
- 287**
All Platinum Solitaire Diamond Ring & Band
 modern four claw set princess cut approx 0.51cts with ten channel set shoulder diamonds with matching 15stone princess cut channel set band
 '20 replacement \$8,770
 \$3,000 - \$3,500
- 287a**
18ct 13stone Sapphire and Diamond Cluster Ring
 ceylonese blue oval mixed cut sapphire with diamond surround on split shoulders together with 18ct seven stone diamond curve band
 '20 Replacement \$11,500
 \$2,600 - \$3,000
- 288**
14ct White Gold 19stone Emerald & Diamond Dress Ring
 central round brilliant cut diamond with six pear cut emeralds and baguette cut diamond shoulders. Bright green emeralds approx 1.40cts and 1.05cts tdw
 '20 replacement \$11,000
 \$3,000 - \$4,000
- 289**
All Platinum 45stone Sapphire & Diamond Cluster Ring
 raised central oval mid-blue sapphire approx 1.31cts with surround of baguette and round cut diamonds approx 0.51cts tdw
 '20 replacement \$9,800
 \$2,000 - \$3,000
- 290**
14ct White Gold 23stone Diamond Heart Cluster Ring
 raised cage claw set three diamond tier, round brilliant cut approx 1.30cts tdw
 '20 replacement \$6,900
 \$2,000 - \$2,500
- 291**
18ct White Gold Solitaire Diamond Ring
 modern raised platform design of raised four claw set round brilliant cut approx 0.64cts with single loop shoulder pave set with 12 diamonds and 3 baguette cut
 '19 replacement \$9,300
 \$2,500 - \$3,000
- 292**
18ct Solitaire Diamond Ring
 modern rub-over set round brilliant cut approx 0.48cts
 '19 replacement \$5,900
 \$1,600 - \$2,000
- 293**
Art Deco All Platinum Sapphire & Diamond Bracelet
 five open rectangular panels interspaced with square cluster of central bright blue sapphire with diamond surround, 180 round brilliant and single cut diamonds approx 7.75cts tdw
 '20 Replacement \$18,000
 \$6,000 - \$9,000
- 294**
14ct White Gold Tanzanite & Diamond Necklace
 necklace gems all individually four claw set supporting 25stone Tanzanite and diamond cluster pendant
 '19 Replacement USD\$47,300
 \$16,000 - \$20,000
- 295**
Platinum Ruby & Diamond Necklace
 claw set 33 oval dark pinkish red rubies approx 107.25cts total with 418 round brilliant cut diamonds surrounding approx 8.91cts tdw, 45.5cm
 19 Replacement AU\$185,000
 \$45,000 - \$55,000





293



313



296



298



299



308



309



310



311



312



361



363



260



287



290



289



300



305



302



292



303



288



318



319



304



306



315



314

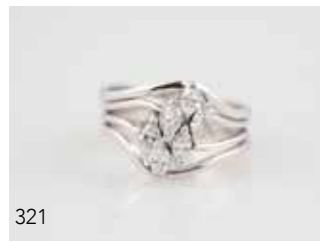
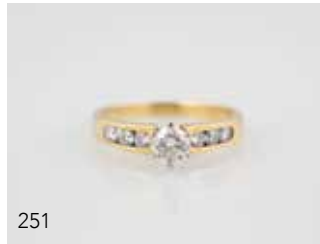
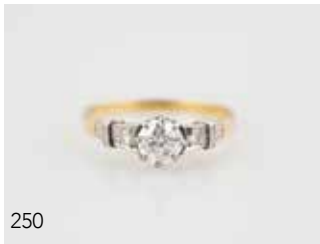


307



408

- 296**
All Platinum Ruby & Diamond Halo Tennis Bracelet
 claw set 16 oval and rectangular cushion cut medium-dark red rubies approx 22.09ct total with 244 round brilliant cut diamonds 3.78ct tdw 18cm
 '20 Replacement AU\$80,000
 \$12,000 - \$15,000
- 297**
18ct White Gold Ruby & Diamond Pendant Earrings
 each of 33 baguette cut, purplish-red Burmese rubies and 40 round brilliant cut diamonds, approx 12.89cts ruby total weight and 2.73cts tdw
 '19 Replacement AU\$38,390
 \$10,000 - \$14,000
- 298**
All Platinum Ruby & Diamond Halo Tennis Bracelet
 claw set 19 oval medium-dark red rubies approx 12.03cts total with 228 round brilliant cut diamonds approx 3.44cts tdw 18cm
 '20 Replacement AU\$85,000
 \$12,000 - \$15,000
- 299**
All Platinum Ruby & Diamond Halo Tennis Bracelet
 claw set 10 marquise cut medium-dark red rubies approx 16.14cts total with 243 round brilliant cut diamonds approx 2.20cts tdw 18cm
 '20 Replacement AU\$75,000
 \$12,000 - \$15,000
- 300**
18ct White Gold 18stone Diamond Cluster Ring
 pear cut diamond approx 1cts with brilliant cut diamond surround
 '19 NRV \$20,000
 \$14,000 - \$16,000
- 301**
18ct White Gold 55stone Diamond Fancy Cluster Ring
 central halo emerald cut diamond, surround of round brilliant cut, shoulders of four pear cut and four marquise cut diamonds on diamond set split band approx 2.19cts tdw
 \$14,000 - \$16,000
- 302**
18ct 39stone Diamond Cluster Ring
 modern raised four claw set round brilliant cut approx 3.05cts on fancy platform of individual set diamonds
 '18 replacement \$56,000
 \$20,000 - \$24,000
- 303**
14ct 37stone Diamond Cluster Ring
 central raised six claw set round brilliant cut approx 0.69cts on 'star-burst' platform of round brilliant and baguette cut diamonds approx 2.33cts tdw
 '18 replacement \$8,800
 \$3,000 - \$3,500
- 304**
14ct White Gold Sapphire & Diamond Pendant Drop Earrings
 each of two oval royal blue sapphires with 50 round brilliant cut diamonds surrounding as two clusters, sapphires approx 19cts total and 1.50cts tdw
 '20 Replacement AU\$35,000
 \$3,000 - \$4,000
- 305**
14ct White Gold Sapphire & Diamond Ring
 central oval cut dark royal blue Madagascar sapphire approx 4.07cts with 28 round brilliant cut diamonds surrounding approx 0.87cts tdw
 '20 Replacement \$18,000
 \$2,000 - \$4,000
- 306**
Pair 14ct Rose Gold Tanzanite & Diamond Pendant Cluster Earrings
 each of central round blue tanzanite with 16 round brilliant cut diamonds surrounding, four diamond set to the hangers approx 3.07cts total tanzanite weight, approx 0.97cts tdw
 '20 Replacement \$16,000
 \$2,500 - \$3,500
- 307**
Pair 14ct White Gold Heart Cluster Diamond Stud Earrings each with central heart shape brilliant cut diamond with 18 brilliant cut diamonds surrounding, approx 2.27cts tdw
 '19 Replacement AU\$20,000
 \$5,500 - \$7,000
- 308**
14ct White Gold Diamond Tennis Bracelet
 four claw set 53 round brilliant cut diamonds approx 5.97cts tdw, 17cm
 '20 Replacement AU\$30,000
 \$5,500 - \$7,000
- 309**
18ct 194stone Diamond Bracelet
 articulated links with each channel/pave set with two princess cut diamonds
 '20 replacement \$19,000
 \$8,000 - \$10,000
- 310**
14ct 31stone Diamond Tennis Type Bracelet
 design of chevron gold panels interspaced with single round brilliant cut diamond approx 3.75cts tdw
 '20 replacement \$13,800
 \$3,500 - \$5,000
- 311**
18ct 38stone Emerald & Diamond Hinged Snap Bangle
 double band head channel set with round brilliant cut diamonds approx 2.10cts tdw and eight rectangular step cut medium green emeralds approx 1.20cts total weight
 '20 replacement \$15,000
 \$5,500 - \$7,000
- 312**
14ct 77stone Emerald & Diamond Bracelet
 articulated cross-over link interspaced with floret clusters pave set with emeralds and diamonds
 '20 replacement \$10,000
 \$3,000 - \$3,500
- 313**
18ct 209stone Sapphire & Diamond Bracelet
 seven fancy lozenge linked panels set with central oval deep blue sapphire, two side diamonds and frame all pave set with round brilliant cut approx 1.37cts tdw
 '20 replacement \$12,000
 \$4,500 - \$5,000
- 314**
18ct White Gold Diamond Dress Earrings
 each of leaf and ribbon fold design all pave set with diamonds, tdw for pair 1.75cts pierced clip backs
 '20 replacement \$10,400
 \$4,000 - \$5,000
- 315**
Pair 18ct White Gold Diamond Pendant Earrings
 each of pave set square on three diamond swing support 0.56cts tdw for both earrings
 '20 replacement \$5,100
 \$1,400 - \$1,800
- 316**
18ct Solitaire Diamond Ring
 rub-over set round brilliant cut approx 0.53cts with eight channel set shoulder diamonds on wide band (one diamond with faults)
 '12 Replacement \$8,264
 \$2,000 - \$2,500
- 317**
18ct Three Stone Diamond Bridge Ring
 modern rub-over set round brilliant cut approx 0.90cts together with fitted wedding band gypsy set with five diamonds
 '13 Replacement \$7,078
 '15 Replacement \$2,110
 \$2,200 - \$2,600
- 318**
14ct White Gold 19stone Diamond Princess Style Cluster Ring
 scattered ten old European cut diamonds on crescent design scroll design approx 1.04cts tdw
 '20 replacement \$6,400
 \$1,500 - \$2,000



- 319**
18ct White Gold Synthetic Moissanite Dress Ring
platform design set round brilliant cut synthetic moissanite approx 2.60cts with surround and shoulders of synthetic zircons '20 NRV \$6,490
\$1,500 - \$2,000
- 320**
18ct White Gold Solitaire Diamond Ring
four corner claw set emerald cut diamond approx 0.43cts with four baguette cut shoulder diamonds together with fitted wedding band channel set with four baguette cut diamonds '05 Replacement \$4,900 (solitaire)
\$1,600 - \$2,000
- 321**
18ct White Gold Modern Six Stone Diamond Ring Trio
central ring of four marquise cut diamonds with two interlocking bands of single marquise diamond set each approx .70cts tdw '17 Replacement \$6,750
\$1,600 - \$2,000
- 322**
14ct 35stone Citrine and Diamond Cluster Ring
central oval citrine approx 4cts with surround of brilliant cut diamonds approx 0.50cts tdw '20 replacement \$4,400
\$1,500 - \$1,800
- 323**
18ct Single Aquamarine Dress Ring
modern set oval mixed cut approx 9.43cts with eight shoulder diamonds
\$1,600 - \$2,000
- 324**
18ct Single Topaz Dress Ring
oval mixed cut bright blue topaz approx 16mm x 7mm with six round brilliant cut shoulder diamonds
\$800 - \$1,500
- 325**
18ct Single Opal Triplex Dress Ring
rub-over oval opal on heavy wide shank '20 NRV \$5,100
\$2,000 - \$2,500
- 326**
14ct Single Opal Dress Ring
oval rub-over iridescent brilliant green flash gem with single diamond set shoulders
\$1,200 - \$1,600
- 327**
18ct Single Opal Doublet Dress Ring
rub-over pear shape bright blue/green opal on scroll frame and shoulders '20 Replacement \$4,770
\$1,000 - \$1,500
- 328**
18ct White Gold 30stone Diamond Band Ring
three rows channel set princess cut diamonds approx 2.70cts tdw '09 Replacement AU\$7,150
\$1,200 - \$2,000
- 329**
18ct 84stone Diamond Fancy Band Ring
all pave milliegrain set round brilliant cut \$800 - \$1,200
- 330**
18ct 42stone Diamond Fancy Band Ring
central pave set band of 20 baguette cut diamonds with round brilliant cut diamonds edging \$800 - \$1,200
- 331**
9ct Modern Yellow and Rose Gold Necklace
facet curb and scroll link 44cm \$1,500 - \$2,000
- 332**
9ct Large Curb Link Bracelet
heart padlock clasp \$600 - \$1,000
- 333**
9ct Wide Gate Link Bracelet
engraved heart padlock clasp \$400 - \$800
- 334**
9ct Curb Link Charm Bracelet
heart padlock clasp with ten 9ct charms, three Victorian seals and two gold plated lockets attached \$1,000 - \$1,400
- 335**
9ct Fancy Link Bracelet
double loop with textured finish central joining links \$700 - \$1,000
- 336**
9ct Gate Link Bracelet
heart padlock clasp \$450 - \$700
- 337**
18ct Fancy Necklace
graduated design of all hinged mixed loop rail links '20 Replacement \$9,950
\$3,000 - \$3,400
- 338**
14ct White Gold Fancy Neck Chain
heavy trace link 45cm length \$1,600 - \$2,000
- 339**
9ct Trace Link Neck Chain 48cm
\$1,000 - \$1,400
- 340**
14ct Rope Twist Neck Chain 67cm
\$450 - \$700
- 341**
14ct Mounted Chrysoprase Panel Pendant
on 14ct modern facet curb link neck chain, 52cm \$600 - \$800
- 342**
Jade Style Panel Pendant
on 9ct elongated trace link chain 58cm \$200 - \$400
- 343**
9ct NZ Greenstone Panel Albert Chain
six panels with fancy chain linking 38cm \$800 - \$1,200
- 344**
C1894 Colonial Australian 'Coolcardie' 15ct Gold Miners Brooch
formed with shovel, pick, bucket and gold nugget and with name, Larard Bros makers marks \$1,200 - \$1,800
- 345**
Possible NZ Colonial 15ct 13stone Sapphire & Diamond Hinged Snap Bangle
platform head set with oval deep blue sapphire with loop surround of old European cut diamonds, each shoulder set with sapphire and early brilliant cut diamonds \$3,500 - \$4,500
- 346**
Art Deco 18ct White Gold Opal & Diamond Necklet
oval cabochon black opal approx 8.84cts with fancy diamond set shoulders on silver chain '20 NRV \$63,500
\$20,000 - \$24,000
- 347**
Art Deco 15ct Three Stone Opal & Diamond Bar Brooch
central oval cabochon fiery opal with side diamonds \$400 - \$600
- 348**
18ct White Gold 42stone Diamond Bow Spray Brooch
individual and pave set brilliant and single cut diamonds approx 0.90cts tdw \$1,200 - \$1,500
- 349**
14ct Five Stone Diamond Bar Brooch
scroll claw set bridge of old brilliant cut \$400 - \$600



345



344



334



332



335



359



436



437



438



439



440



434



331



337



339



343



369



370



371

350
9ct Diamond Articulated Dolphin Pendant
 five sections pave set with 26 diamonds and ruby eyes
 \$400 - \$600

351
14ct White Gold 216stone Diamond Necklace

geometric diamond links half pave set with black treated diamonds and round brilliant cuts approx 2.16cts tdw
 \$3,500 - \$5,000

352
14ct Single Diamond Pendant
 round brilliant cut approx 0.50cts on 14ct fine chain
 '20 replacement \$2,700
 \$1,000 - \$1,200

353
14ct White Gold 23stone Emerald & Diamond Pendant
 heart shape pave set with 22 round brilliant diamonds approx 2.20cts tdw with central swing mounted oval mixed cut deep green emerald on 14ct chain
 '20 replacement \$13,000
 \$4,500 - \$5,000

354
18ct 22stone Diamond Cross Pendant
 rub-over set diamonds on 18ct bead link chain
 '20 replacement \$3,550
 \$1,200 - \$1,500

355
18ct Eleven Stone Diamond Cross Pendant
 round brilliant cut diamonds on 18ct box link chain
 \$400 - \$600

356
14ct White Gold Three Stone Diamond Pendant
 rub-over set round brilliant cuts approx 0.33cts tdw on 14ct fine link chain
 '20 replacement \$1,700
 \$600 - \$800

357
9ct 35stone Diamond Hinged Snap Bangle
 all twist design with pave set single cut diamonds (one stone missing)
 \$400 - \$600

358
9ct 35stone Diamond Hinged Snap Bangle
 individual four claw set round brilliant cuts
 \$1,200 - \$1,500

359
18ct 68stone Diamond Bracelet
 heavy curb link with each link set with four brilliant cut diamonds approx 2.04cts tdw
 \$5,000 - \$6,000

360
14ct White Gold 63stone Diamond Bracelet
 design of lozenge rail link supporting nine diamond floret clusters approx 1cts tdw
 '20 replacement \$6,500
 \$1,500 - \$1,800

361
18ct 50stone Diamond Tennis Bracelet
 each articulated link set with single round brilliant cut diamond approx 2cts tdw
 '20 replacement 7,500
 \$3,000 - \$3,500

362
14ct 50stone Diamond Tennis Bracelet
 each articulated link set with single round brilliant cut diamond approx 1.25cts tdw
 '20 replacement 5,000
 \$1,500 - \$1,800

363
18ct 96stone Fancy Diamond Hinged Snap Bangle
 cross-over design head individually set with row of 15 fancy yellow diamonds and 15 treated blue diamonds all surrounded with white brilliant cuts approx 1.85cts tdw
 \$3,000 - \$3,500

364
18ct 17stone Multi-Gem Fancy Bracelet
 the head set with marquise cut single emerald, four rubies, five sapphires with surrounds, shoulders pave set with diamonds
 '20 replacement \$6,300
 \$2,000 - \$2,500

365
Universal All 14ct White Gold Ladies Diamond Cocktail Wrist Watch
 plain circular dial with diamond surround on fancy individual set diamond shoulders, round brilliant and baguette cuts approx 1.93cts tdw
 '20 Replacement \$5,290
 \$1,600 - \$2,000

366
Kent Platinum and Diamond Case Ladies Cocktail Wrist Watch
 rectangular dial with 16 diamonds set to the shoulders on stainless steel expanding strap, dated 1934
 \$800 - \$1,200

367
Omega All 18ct Dress Wrist Watch
 plain circular dial on bracelet strap
 \$1,500 - \$1,800

368
Rolens Quartz Ladies Wrist Watch
 circular dial on 18ct bracelet strap
 \$400 - \$700

- 369**
Chaumet, Paris Class One Diamond Bezel Ladies Wrist Watch
 MOP circular dial set with diamond indices, stainless steel Swiss quartz on blue rubber strap
 \$4,000 - \$6,000
- 370**
Ralph Lauren 18ct White Gold Diamond Bezel 'Stirrup' Ladies Wrist Watch
 white enamel dial Swiss quartz movement, folding pin clasp on leather strap with two extra straps and original packaging
 \$8,000 - \$15,000
- 371**
Longines BelleArti MOP Dial Diamond Bezel Ladies Wrist Watch
 rectangular shape stainless steel case, Swiss quartz with seconds dial, Longines leather strap with original packaging
 \$800 - \$1,200
- 372**
Longines Master Collection Ladies Wrist Watch
 circular stainless steel case, with sapphire crystal with both sides Swiss automatic with date dial, Longines leather strap with original packaging
 \$600 - \$1,200
- 373**
Seiko Vivace Quartz Ladies Dress Wrist Watch
 oval dial framed with 20 diamonds on integral stainless steel bracelet strap
 \$300 - \$500
- 374**
Vintage Gucci Gold Plated Watch Bezel Colour Change
 bracelet strap with four bezels in original packaging together with other watch, bangle strap (wear)
 \$150 - \$300
- 375**
Omega C1935 Wrist Watch
 stainless steel case circular dial, manual wind (not working)
 \$200 - \$400
- 376**
Tavannes C1920 Wrist Watch
 .925 case with circular dial manual wind (faults)
 \$100 - \$200
- 377**
18ct Cased Small Half Hunter Pocket Watch
 lever wind plain white enamel dial with pink and blue enamel outer dial
 \$400 - \$600
- 378**
All Platinum Five Stone Diamond Bridge Ring
 scroll claw set round brilliant cuts approx 0.75cts tdw
 '20 replacement \$5,100
 \$1,800 - \$2,200
- 379**
14ct Solitaire Diamond Ring
 modern design raised central marquise cut diamond approx 0.30cts with eight brilliant cut and fourteen baguette cut shoulder diamonds
 '19 replacement \$4,100
 \$1,000 - \$1,200
- 380**
14ct Three Stone Diamond Bridge Ring
 raised four claw set princess cut diamonds approx 1cts tdw
 '19 replacement \$3,500
 \$1,000 - \$1,200
- 381**
18ct 21stone Emerald and Diamond Fancy Band Ring
 interlocked twist design channel set with eleven round brilliant cut diamonds and ten square cut emeralds
 '19 replacement \$4,200
 \$1,200 - \$1,500
- 382**
18ct Single Emerald Dress Ring
 rub-over set natural oval deep green emerald approx 3.48cts with twelve shoulder diamonds
 '19 replacement \$7,950
 \$1,600 - \$2,000
- 383**
18ct White Gold Sapphire and Diamond Cluster Ring
 central oval mixed cut medium blue sapphire approx 1.39cts with surround of 16 round brilliant cut diamonds and 30 diamonds set to the split shoulders
 '17 NRV \$8,000
 \$2,500 - \$3,000
- 384**
18ct 19stone Sapphire and Diamond Ring
 central rub-over oval mixed cut dark blue sapphire approx 1.85cts with two round brilliant cut side diamonds and channel set shoulders approx 0.50cts tdw
 '20 replacement \$7,500
 \$2,000 - \$2,600
- 385**
18ct 38stone Sapphire and Diamond Ring
 modern design central rub-over set triangular cut dark blue sapphire approx 1.10cts with bands of channel set round brilliant cut diamonds surrounding approx 0.50cts tdw
 '20 replacement \$7,700
 \$1,500 - \$2,000
- 386**
14ct 13stone Sapphire and Diamond Cluster Ring
 central oval dark blue sapphire approx 1.20cts with surround of baguette cut diamonds
 19 replacement \$3,900
 \$1,000 - \$1,200
- 387**
14ct Sapphire and Diamond Band Ring
 central oval cabochon cut sapphire banded with single cut diamonds
 \$600 - \$800
- 388**
14ct Sapphire and Diamond Band Ring
 central round medium blue sapphire on all pave and bead set diamond platform
 \$600 - \$800
- 389**
18ct White Gold Solitaire Diamond Ring & Band
 raised six claw set round brilliant cut approx 0.50cts
 '12 replacement \$5,900
 with 18ct 14stone diamond curve band
 \$2,000 - \$2,500
- 390**
18ct White Gold Solitaire Diamond Ring
 round brilliant cut with cross-over shoulder design channel set with six diamonds, matching interlocking wedding band
 \$1,000 - \$1,400
- 391**
18ct White Gold Nine Stone Diamond Band Ring
 pave set princess cut diamonds approx 0.63cts tdw
 '20 Replacement \$2,990
 \$800 - \$1,000
- 392**
9ct White Gold 35stone Diamond Band Ring
 three bands channel and millegrain set round brilliant cut diamonds approx 0.42cts tdw
 '20 Replacement \$2,099
 \$500 - \$800
- 393**
18ct White Gold Eight Stone Diamond Band
 gypsy set round brilliant cut approx 0.34cts tdw
 '17 NRV \$3,050
 \$800 - \$1,200
- 394**
14ct White Gold 53stone Pink Sapphire & Diamond Cluster Ring
 central oval synthetic sapphire with two tier surround of brilliant and baguette cut diamonds approx 0.75cts tdw
 '19 replacement \$5,000
 \$2,000 - \$2,500

- 395**
14ct Ruby & Diamond Dress Earrings
each of central gold double scroll flanked by five rubies and four diamonds, pierced clip backs
'20 replacement \$5,900
\$1,500 - \$2,000
- 396**
14ct 43stone Ruby & Diamond Cluster Ring
central pear cut ruby approx 1.78cts with surrounds of round and baguette cut diamonds approx 1.50cts tdw
'20 replacement \$5,700
\$2,000 - \$2,500
- 397**
14ct White Gold Single Ruby Ring
raised four claw set treated ruby with 24shoulder diamonds
'19 replacement \$2,900
\$800 - \$1,000
- 398**
14ct White Gold Single Diamond Stud Earrings
four claw set round brilliant cut approx 0.75cts tdw, pierced
'20 replacement \$2,000
\$800 - \$1,000
- 399**
14ct White Gold Single Diamond Stud Earrings
raised four claw set round brilliant cut approx 0.65cts
'20 replacement \$1,800
\$600 - \$800
- 400**
18ct Three Stone Diamond Bridge Ring
modern box rub-over set princess cut approx 1.04cts tdw
'99 replacement \$7,825
\$2,500 - \$3,000
- 401**
18ct Solitaire Diamond Ring
eight claw set round brilliant cut approx 0.62cts with six shoulder diamonds
'19 Replacement \$6,024
\$2,000 - \$2,500
- 402**
18ct Solitaire Diamond Ring
raised four claw set princess cut approx. 0.50cts
\$700 - \$1,000
- 403**
14ct Amethyst Ruby & Diamond Dress Ring
central four claw set rectangular step cut amethyst approx 17cts, fancy shoulders set with eight rubies and twelve shoulder diamonds
'20 replacement \$5,900
\$1,500 - \$2,000
- 404**
18ct 108stone Amethyst, Sapphire and Diamond Dress Ring
raised central oval amethyst with shoulder petals set with yellow sapphires and diamonds on sapphire pave set gallery
'20 replacement \$7,400
\$1,500 - \$1,800
- 405**
14ct 37stone Amethyst and Diamond Band Ring
central oval amethyst on fancy looped band pave set with single cut diamonds
'20 replacement \$1,700
\$500 - \$700
- 406**
18ct 61stone Sapphire, Ruby, Emerald & Diamond Cluster Ring
fancy dome design of flower heads
'20 replacement \$5,800
\$1,400 - \$1,800
- 407**
14ct Ten Stone Ruby & Diamond Modern Design Dress Ring
five ridged design scattered with diamonds and marquise cut rubies with heavy textured finish
'20 replacement \$2,900
\$900 - \$1,200
- 408**
Pair 18ct Diamond Scroll Earrings
each of triple scroll scattered with ten single cut diamonds, textured finish, clip backs
'20 replacement \$4,400
\$1,400 - \$1,800
- 409**
Russian 14ct Emerald & Diamond Earrings
each of oval cabochon light green emerald with two round brilliant cut diamonds in scroll frame, pierced
'13 Replacement \$4,100
\$1,600 - \$2,000
- 410**
18ct Single Imitation Emerald Ring
rub-over set together with pair imitation emerald and zircon modern half-hoop earrings, pierced
'20 Insurance \$1,600 and \$1,300
\$500 - \$800
- 411**
Pair 14ct Emerald & Diamond Pendant Earrings
each of linked four claw set drops of 13 and 11 round brilliant cut diamonds supporting emerald pear cut ends, approx 2cts tdw for both earrings, pierced
'20 replacement \$5,400
\$1,400 - \$1,800
- 412**
Pair 14ct White Gold Cultured Pearl & Diamond Cluster Earrings
each of eleven pearls with diamond set leaf and ribbon scatters, clip backs
'20 replacement \$9,000
\$3,000 - \$4,000
- 413**
Pair 18ct White Gold South Sea Pearl & Diamond Pendant Earrings
each of single silver/white pearl approx 18mm with single round brilliant cut diamond approx 1.04cts tdw, pierced
'20 Replacement AU\$35,000
\$6,000 - \$8,000
- 414**
18ct White Gold Pair Autore South Sea Pearl Pendant Earrings
each of single light grey baroque pearl approx 14mm, pierced
\$500 - \$800
- 415**
18ct White Gold Autore Pearl Clasp
\$100 - \$200
- 416**
Single Strand Slightly Graduated South Sea Pearl Necklace
39 silver/grey pearls 11.70 to 12.30mm, S/S 'ball' clasp 47cm
'19 Replacement \$4,950
\$1,200 - \$1,600
- 417**
9ct White Gold Mabe Pearl and Diamond Pendant
pear shape pearl with surround of diamonds and triple leaf swing head, 9ct fine curb link yellow gold chain
\$500 - \$800
- 418**
Single Strand Graduated Cultured Pearl Necklace
98 pearls with 14ct filigree clasp
\$150 - \$300
- 419**
Single Strand Uniform Cultured Pearl Necklace
42 pearls 7mm pearls interspaced with 14ct beads and on 14ct clasp
\$200 - \$400
- 420**
Single Strand Graduated Cultured Pearl Necklace
107 pearls with 15ct box clasp
\$100 - \$200
- 421**
Single Strand Uniform Cultured Pearl Necklace
slightly baroque opera length of 117, 7mm pearls 94cm
\$200 - \$400



- 422**
Single Strand Fresh Water Pearl Necklace
white uniform pearls interspaced with pink baroque pearls, opera length 160cm
\$100 - \$200
- 423**
18ct Single Strand Freshwater Pearl Necklace
19 grey baroque pearls 15mm to 28mm interspaced with 18ct beads and interlocking clasp
'20 Replacement \$5,700
\$1,000.00 - \$1,500.00
- 424**
Single Strand Freshwater Pearl Necklace
38 uniform pearls 10mm 41cm
\$100 - \$200
- 425**
Single Strand Freshwater Pearl Necklace
40 uniform pearls 9mm 40cm
\$100 - \$200
- 426**
S/S Fancy Large Fresh Water Pearl Hair Pin
designed as flower bud stem
\$200 - \$300
- 427**
Single Fancy Large Fresh Water Pearl Pendant
zircon pave set hanging loop
\$200 - \$250
- 428**
18ct Pearl and Diamond Cluster Ring
three Akoya natural pearls with 29 round brilliant cut diamonds surrounding
'19 Replacement \$20,000
\$4,000 - \$5,000
- 429**
18ct White Gold Single Pearl and Diamond Dress Ring
central 8.56mm pearl with eight round brilliant cut shoulder diamonds
'20 replacement \$3,000
\$1,000 - \$1,400
- 430**
14ct White Gold Pearl and Diamond Dress Ring
central imitation pearl with surround of baguette cut diamonds and treated black diamonds
'20 replacement \$3,000
\$1,000 - \$1,200
- 431**
14ct White Gold Single Pearl & Diamond Cluster Ring
cultured pearl with side diamond approx 0.17cts with looped framed set with single cut diamonds
'19 replacement \$2,400
\$600 - \$800
- 432**
Pair 14ct/9ct & White Metal Diamond Stud Earrings
each of circular diamond slither on rhodium cone with surround of 23 brilliant cut diamonds on pierced back with butterfly set with 12 diamonds (faults)
\$300 - \$500
- 433**
Edwardian 15ct Pearl & Diamond Scroll Brooch
central natural pearl with 22 old European cut diamonds millegrain set to the scrolls
Replacement \$3,450
\$1,000 - \$1,200
- 434**
Edwardian 9ct Pearl Hinged Snap Bangle
floral ribbon head all pave set with half pearls
\$600 - \$800
- 435**
Early C20th 14ct Pearl and Diamond Stick Pin
central diamond with surround of eight natural pearls, with original box
\$300 - \$400
- 436**
9ct Carved Opal Brooch
oval white opal carved with female portrait in the cameo style
'20 replacement \$4,000
\$800 - \$1,200
- 437**
Victorian Grand Tour 18ct Moasic Panel Bracelet
six circular mosaic tiles of Christian emblems on finely worked gold wire frames
'20 Replacment \$12,500
\$3,000 - \$4,000
- 438**
Pair Victorian Grand Tour 15ct Cameo Pendant Earrings
classical gladiator portraits on rope twist frames
\$1,000 - \$1,200
- 439**
Victorian 9ct Single Amethyst Brooch
crown claw set oval mixed cut approx 27cts
'09 Replacement \$2,150
\$500 - \$800
- 440**
Victorian 18ct Fancy Target Brooch
central panel of ruby and eight emeralds with chased twist frame, applied foliage, reverse photo panel
\$600 - \$800
- 441**
Late Victorian 18ct Oval Photo Locket
foliate bright cut engraved cover 4.5cm length
\$700 - \$1,000
- 442**
Late Victorian 9ct Double Sided Circular Photo Locket
fancy frame set with imitation rubies and seed pearls
\$100 - \$200
- 443**
Victorian Double Tiger Claw Brooch
fancy central gold plate mount panel together with pair 9ct mounted tiger claw cuff-links
\$300 - \$600
- 444**
Late Victorian 9ct Gold Gilt Scarf Clip
applied with fine wire work decoration
\$100 - \$200
- 445**
Victorian Plain 15ct Pin Brooch
\$200 - \$300
- 446**
Edwardian 9ct Hinged Snap Bangle
head styled as a belt, gypsy set with diamond and two ruby, inscribed and dated 1908
\$300 - \$600
- 447**
9ct Mesh Bracelet Belt Bracelet
with buckle clasp (slight fault to edge)
\$400 - \$500
- 448**
Edwardian 15ct Sapphire & Pearl Pendant
circlet pendant of six sapphires interspaced with half pearls
'07 replacement \$1,750
\$500 - \$800
- 449**
Edwardian 15ct 16stone Sapphire and Pearl Circlet Bar Brooch
dated 1924
'07 Replacement \$1,650
\$300 - \$400
- 450**
9ct Single Amethyst Bar Brooch
together with 9ct imitation sapphire bar brooch
\$200 - \$400
- 451**
Two Late Victorian 15ct & 9ct Bar Brooches
four ruby and single diamond and single opal
\$300 - \$500
- 452**
Late Victorian 9ct Bug Brooch
wings and body all pave set with half pearls , ruby eyes (missing one antenna)
\$150 - \$300



378



380



384



382



382



384



389



390



393



394



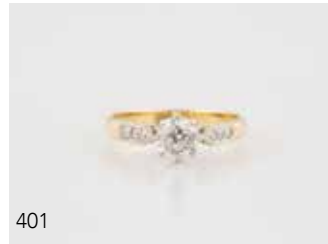
395



396



400



401



456



462



403



404



406



407



409



429



430



464



473



475



476



477

- 453**
Art Nouveau Silver & Enamel Pendant
 Birmingham 1905, maker W H Haseler (for Liberty's)
 \$300 - \$500
- 454**
Art Nouveau Silver & Enamel Brooch
 stylised winged insect Chester 1909 maker Charles Horner
 \$200 - \$300
- 455**
Art Nouveau White Metal & Enamel Brooch
 in the manner of Knox for Liberty's (unmarked)
 \$200 - \$300
- 456**
14ct 43stone Green Emerald & Diamond Cluster Ring
 central oval mixed cut green sapphire approx 1.50cts with fancy starburst frame and shoulders all pave set with diamonds approx 1ct tdw
 '20 replacement \$6,200
 \$2,000 - \$2,500
- 457**
9ct Seven Stone Green Sapphire & Diamond Ring
 central oval bright green sapphire, round brilliant cut shoulder diamonds
 '19 replacement \$2,999
 \$800 - \$1,200
- 458**
14ct 15stone Diamond Cluster Ring
 claw set three rows old mine cut diamonds
 \$500 - \$800
- 459**
14ct White Gold 44stone Diamond Cluster Ring, modern design raised four claw panel of 36 princess cut diamonds with eight brilliant cut shoulder diamonds approx 0.50cts tdw
 '19 replacement \$2,800
 \$800 - \$1,000
- 460**
10ct 49stone Diamond Cluster Ring
 central marquise cluster with tiered channel set shoulder diamonds approx 0.50cts tdw
 '20 replacement \$2,100
 \$800 - \$1,000
- 461**
14ct White Gold 32stone Sapphire & Diamond Starburst Cluster Ring
 triple tier leaf blade design each set with two diamonds and two sapphires
 '20 replacement \$5,800
 \$1,500 - \$2,000
- 462**
14ct White Gold 28stone Sapphire & Diamond Cluster Ring
 raised cage claw set round brilliant cuts approx 1.40cts tdw scattered with fourteen marquise cut sapphires
 '20 replacement \$5,500
 \$2,000 - \$2,500
- 463**
14ct 63stone Sapphire & Diamond Cluster Ring
 central oval sapphire with two tier surround of round and baguette cut diamonds approx 0.70cts tdw
 '20 replacement \$4,800
 \$1,200 - \$1,500
- 464**
All Platinum 13stone Sapphire & Diamond Cluster Ring
 raised four claw set central mid-blue sapphire with surround of baguette and round cut diamonds approx 0.48cts tdw
 '20 replacement \$5,500
 \$1,800 - \$2,400
- 465**
14ct White Gold Five Stone Sapphire & Diamond Bridge Ring
 rub-over set three dark blue round sapphire and two brilliant cuts
 '20 replacement \$2,400
 \$800 - \$1,000
- 466**
18ct 13stone Sapphire & Diamond Cluster Ring
 Ceylonese blue oval mixed cut sapphire with diamond surround on split shoulders together with 18ct seven stone diamond curve band
 \$1,600 - \$2,000
- 467**
9ct 13stone Sapphire and Diamond Cluster Ring
 blue oval mixed cut sapphire with diamond surround together with 9ct plain wedding band
 '20 Replacement \$2,980
 \$800 - \$1,200
- 468**
9ct Nine Stone Sapphire & Diamond Ring
 three oval mixed cut medium blue sapphires with diamond flanking central sapphire
 \$350 - \$500
- 469**
9ct 15stone Blue & White Sapphire Dress Ring
 three central blue sapphires with cross-over shoulders pave set with white sapphires
 \$300 - \$400
- 470**
9ct 49stone Blue & White Sapphire Bracelet
 three central clusters on bracelet strap
 \$600 - \$800
- 471**
14ct White Gold Single Star Sapphire Ring
 oval gem in modern cross-over claw setting
 \$300 - \$500
- 472**
18ct 15stone Sapphire & Diamond Dress Ring
 central oval deep blue sapphire on fancy and set with round brilliant cuts approx 0.22cts tdw
 '17 replacement \$4,500
 \$1,600 - \$2,000
- 473**
18ct 27stone Sapphire & Diamond Band Ring
 central rub-over set mid-blue sapphire approx 1.45cts on fancy leaf blade diamond set shoulders
 '20 replacement \$6,000
 \$1,000 - \$1,600
- 474**
18ct 33stone Sapphire & Diamond Ring
 fancy band set central oval light blue sapphire with diamond surround, band shoulders of eight sapphire and six diamonds
 '20 replacement \$7,000
 \$1,200 - \$1,800
- 475**
18ct 24stone Sapphire & Diamond Band Ring
 modern design of central eight round brilliant cut diamonds banded with sapphires
 '20 replacement \$3,200
 \$1,000 - \$1,400
- 476**
14ct Single Emerald Dress Ring
 central oval light green emerald approx 2.65cts, naturalistic design sweeping frame and shoulders, two pointer diamonds
 '20 replacement \$4,000
 \$1,200 - \$1,500
- 477**
All Platinum Nine Stone Emerald & Diamond Bridge Ring
 raised central three rectangular step cut emeralds edged with round brilliant cut diamonds
 '20 replacement \$4,200
 \$1,400 - \$1,800
- 478**
14ct 17stone Aquamarine & Diamond Cluster Ring
 central rectangular step cut aquamarine approx 1.90cts with diamond surround
 '19 replacement \$2,900
 \$1,000 - \$1,200

- 479**
14ct White Gold Five Stone Diamond Bridge Ring
 modern scroll claw set round brilliant cut
 approx 0.55cts
 '20 replacement \$3,500
 \$1,400 - \$1,800
- 480**
14ct White Gold 32stone Diamond Cluster Ring
 raised four claw panel of four princess cut diamonds on shoulders pave set with princess cut diamonds approx 0.75cts tdw
 '19 replacement \$2,700
 \$800 - \$1,000
- 481**
14ct Single Citrine and Diamond Dress Ring
 cushion chequerboard cut citrine approx 6cts with 24 diamond set to the four corners and shoulders
 '20 replacement \$2,600
 \$900 - \$1,200
- 482**
14ct Four Stone Diamond Gents Dress Signet Ring
 textured finish and anodized panel set round brilliant cut approx 0.34cts
 '20 replacement \$3,500
 \$1,200 - \$1,400
- 483**
14ct Gent Dress Signet Ring
 square panel with gilt finish with ribbed shoulders
 \$400 - \$600
- 484**
9ct Oval Jade Panel Ring
 rub-over set
 '17 NRV \$1,000
 \$300 - \$500
- 485**
14ct Snake Coil Ring
 \$400 - \$600
- 486**
14ct Three Stone Milk Opal Dress Ring
 claw set oval cut in modern design setting with textured finish shoulders
 \$300 - \$500
- 487**
18ct Single Garnet Ring
 four corner claw set emerald cut deep red garnet
 '20 Insurance \$1,750
 \$500 - \$700
- 488**
18ct Single Black Opal Ring
 crown claw set oval dark green/blue gem
 \$300 - \$500
- 489**
9ct Single Opal Triplex Dress Ring
 four claw set oval gem with open frame surround
 \$200 - \$400
- 490**
18ct Three Stone Ruby Bridge Ring
 oval mixed cut rubies interspaced with four single cut diamonds
 '20 Replacement \$3,950
 \$800 - \$1,200
- 491**
18ct & Platinum Solitaire Diamond Ring
 six claw swt round brilliant cut approx 0.20cts
 '20 Replacement \$3,000
 \$600 - \$800
- 492**
18ct Solitaire Diamond Ring
 raised set claw illusion set round brilliant cut approx 0.16cts
 '20 Replacement \$3,420
 \$600 - \$800
- 493**
18ct Solitaire Diamond Band
 round brilliant cut tension set on split band
 \$200 - \$400
- 494**
14ct Ten Stone Diamond Pendant
 tear drop design with individual claw set diamonds
 \$200 - \$400
- 495**
14ct Yellow & White Gold Band Ring
 set with seven single cut diamonds
 \$150 - \$300
- 496**
18ct & Palladium Wedding Band
 \$100 - \$200
- 497**
NZ Jeweller Sarah Schmid .925 Silver & Single Black Pearl Ring
 11mm pearl on sculptured shank
 \$200 - \$400
- 498**
Finnish .925 Modern Design Single Amethyst Ring
 \$100 - \$200
- 499**
NZ Artist Jeweller Areta Wilkinson Greenstone Brooch
 silver mounted 05 series c1996
 \$100 - \$200
- 500**
Pacific Island Simulated Tortoise and Operculum (Cats Eye) Jewellery
 slightly graduated necklace on chain, bracelet, pin brooch and two pair earrings
 \$400 - \$600
- 501**
Late C19th Single Strand Faceted Garnet Bead Necklace
 slightly graduated on 18ct garnet clasp panel clasp, 38cm
 \$300 - \$500
- 502**
NZ Greenstone Pendant
 on 18ct box link chain 59cm
 \$250 - \$400
- 503**
14ct Trace Link Chain with MOP Circular Disc Pendant
 46cm length
 \$300 - \$500
- 504**
Pair 14ct Large Plain Hoop Earrings
 \$300 - \$500
- 505**
14ct Modern Flat Curb Link Bracelet
 plain and textured finish links
 \$800 - \$1,000
- 506**
9ct Curb Link Bracelet
 filigree heart padlock clasp
 \$300 - \$400
- 507**
9ct Open Curb Link Bracelet
 heart padlock clasp
 \$350 - \$500
- 508**
9ct Mounted Clear Crystal Swivel Fob
 on 9ct trace link neck chain
 \$150 - \$300
- 509**
9ct Mounted Swivel Fob
 set with panels of carnelian, onyx and bloodstone (repair showing)
 \$200 - \$400
- 510**
9ct Gold Framed Swivel Fob
 oval panels of carnelian and bloodstone
 \$200 - \$300
- 511**
.925 Triple Panel Swivel Fob
 panels of carnelian, onyx and bloodstone on Finnish .925 silver rail and chain link neck chain 75cm
 \$150 - \$250
- 512**
.925 Mexican Silver Necklace
 heavy modern design of twisted link supporting bead fringing with matching bracelet 40cm length
 \$350 - \$500



443



446



452



525



454



455



499



526

513
Edwardian Cherry Amber Single Strand Graduated Bead Necklace 80cm
\$100 - \$200

514
Four Cultured Pearl Tie Tacks
\$100 - \$200

515
14ct White Gold Sapphire & Diamond Paste Bar Brooch together with diamond paste tie tack and odd earring
\$150 - 250

516
Pair 14ct Pink Peridot Drop Earrings each of three gems together with oval facet cut aquamarine pendant
\$200 - \$400

517
Pair 9ct Cuff-Links plain oval panels with engraved initials together with 9ct single opal tie tack
\$300 - \$500

518
9ct Pearl Stick Pin with single pearl pin brooch, 21st key pin, greenstone tiki charm and bug
\$100 - \$200

519
Vintage Single Strand Graduated Venetian Bead Necklace green millefiori together with Bilston enamel patch box (af) and gold plated bracelet
\$100 - \$200

520
Edwardian 15ct Seed Pearl Floral Spray Bar Brooch together with two 9ct bar brooches set with single opal and garnet
\$200 - \$400

521
Victorian All Seed Pearl Necklace (faults)
\$100 - \$200

522
Garnet and Agate Brooch with marcasite ring, filigree butterfly brooch, pin and bar brooches
\$100 - \$150

523
Two Single Strand Graduated Pearl Necklaces with 9ct pearl circlet brooch and odd earring (necklaces need re-stringing)
\$200 - \$400

524
Pair 9ct Mounted Quartz Earrings 9ct ring shank, marcasite and other brooches
\$50 - \$100

525
Pair Victorian Carnelian Pendant Drop Earrings elongated lozenge gems with gold plated engraved cone mounts
\$100 - \$200

526
Pair White Striated Agate Pendant Earrings Chinese silver filigree mounts set with pearl and amethysts, screw backs
\$100 - \$150

527
Two 9ct Signet Rings Pair 9ct Hoop Earrings and .800 framed cameo brooch/pendant
\$100 - \$200

528
9ct Framed Portrait Cameo Brooch S/S fancy pendant on chain and gold plated mixed link neck chain
\$150 - \$250

529
Victorian 9ct Swivel Locket Brooch Frame Only together with .800 silver garnet bracelet, earrings and locket (stones missing)
\$200 - \$400

530
Single Strand Slightly Graduated Amber Bead Necklace polished nugget form 44cm together with Scottish silver pebble brooch
\$100 - \$200

531
Silver Ornate Filigree Tiger-Eye Bracelet with crescent shape Satsuma brooch and single strand graduated ivory bead necklace (damage to bracelet clasp)
\$100 - \$200

532
Two Ivory Bangles with mutton fat jade bangle and other
\$100 - \$200

533
Edwardian S/S Five Moonstone Fob Pendant rub-over mounted oval cabochon gems
\$100 - \$200



518



520



522



529



537



540

534
Pair 9ct White Gold Rose Quartz Pendant Earrings each of single diamond shape quartz, pierced with 9ct mounted single large rose quartz pendant on S/S rail link chain '20 Insurance \$1,500 and \$1,600 \$500 - \$700

535
Modern Design Silver Brooch with pendant earrings and neck chain \$100 - \$200

536
.935 Silver Open Face Key Watch Small Pocket Watch decorated white enamel dia with Arabic numerals together with S/S propelling dip pen \$100 - \$200

537
Victorian Jet Bracelet with tortoise shell cross, MOP counters, buttons and s/plated snap bangle \$100 - \$200

538
Victorian Fancy Silver Plate Locket Chain with French Jet oval 'Mizpah' photo locket and bog oak swivel brooch \$100 - \$200

539
S/S Marcasite Leaf Brooch with pair marcasite dome earrings (screw backs), photo locket and S/S hunter cased pocket watch \$100 - \$200

540
Vintage S/S Marcasite Bracelet fancy scallop hinged links together with dress ring \$100 - \$200

541
Single Unmounted Milk Opal, oval 16mm x 11mm \$100 - \$200

542
Collection Unmounted Opals \$200 - \$400

543
Collection Unmounted Citrines \$200 - \$400

544
Collection Unmounted Gems, sapphire, smokey quartz, garnet and lolite \$100 - \$200

545
Collection Unmounted Gems \$200 - \$400

546
Large Collection and Variety Unmounted Gem Stones \$200 - \$400

547
Large Collection and Variety Unmounted Gem Stones \$200 - \$400

548
Large Collection and Variety Unmounted Gem Stones \$200 - \$400

549
Large Collection and Variety Unmounted Gem Stones \$200 - \$400

550
Large Collection and Variety Unmounted Gem Stones \$200 - \$400

551
Modern Design Mink Full length Coat both of cut short and long length fur (size small) \$800 -1200

RECENT FINE JEWELLERY HIGHLIGHTS

CONSIGNMENTS INVITED



1



2



3



4



5



6



7



8



9



10



11



12



13



14



15



16



17



18



19



20

Illustrated: **1** 18ct 89stone Emerald & Diamond Fancy Pendant - \$21,500 **2** Bvlgari Bulgari Divas Dream Style 18ct White Gold Diamond Emerald Necklace - \$7,300 **3** Pair 18ct White Gold & Diamond Pendant Earrings - \$3,800 **4** 18ct White Gold 19stone Sapphire & Diamond Cluster Ring - \$11,000 **5** All Platinum Three Stone Emerald & Diamond Ring - \$13,400 **6** All Platinum Five Stone Diamond Ring - \$22,700 **7** All Platinum 27stone Aquamarine & White Spinel Cluster Ring - \$5,100 **8** All Platinum 19stone Emerald & Diamond Cluster Ring - \$7,200 **9** 18ct Eleven Stone Red Sapphire & Diamond Cluster Ring - \$10,200 **10** Victorian 18ct Essex Crystal Reverse Intaglio Brooch - \$6,600 **11** Pair 18ct & Platinum Diamond and Tanzanite Pendant Drop Earrings - \$9,600 **12** 18ct White Gold 173stone Diamond Pendant/Brooch - \$5,300 **13** German 14ct Lapis Lazuli Neck Chain - \$4,800 **14** Early C20th Grand Tour Italian Mosaic Necklace - \$2,000 **15** 18ct Tiki Pendant on Chain - \$5,700 **16** Rolex Ladies All 18ct Gold Wrist Watch - \$22,100 **17** 18ct Eleven Stone Emerald & Diamond Necklet with Matching Earrings - \$30,500 **18** All Platinum 161stone Diamond Bracelet - \$10,200 **19** 18ct 131stone Sapphire & Diamond Bracelet - \$7,900 **20** 18ct Mounted Five Sovereign Bracelet - \$7,700 * Rounded to the nearest hundred and include buyers premium + GST



ENTRIES CURRENTLY INVITED

Antique & Decorative Arts

November 2020

Enquiries

Bettina Frith / Anthony Gallager

+64 4 472 1367

antiques@dunbarsloane.co.nz

Dunbar M Sloane

+64 9 377 5820

021 473 998

auckland@dunbarsloane.co.nz



ENTRIES CURRENTLY INVITED

Sterling Silver & Gold Coins

November 2020

Enquiries

Anthony Gallager

+64 4 472 1367

0274 713 667

antiques@dunbarsloane.co.nz



ENTRIES CURRENTLY INVITED

New Zealand & International Fine Arts

November 2020

Enquiries

Helena Walker

+64 4 472 1367 / 0274 713 662
art@dunbarsloane.co.nz

Dunbar M Sloane

+64 9 377 5820 / 021 473 998
auckland@dunbarsloane.co.nz



ENTRIES CURRENTLY INVITED

Studio Ceramics & Applied Arts

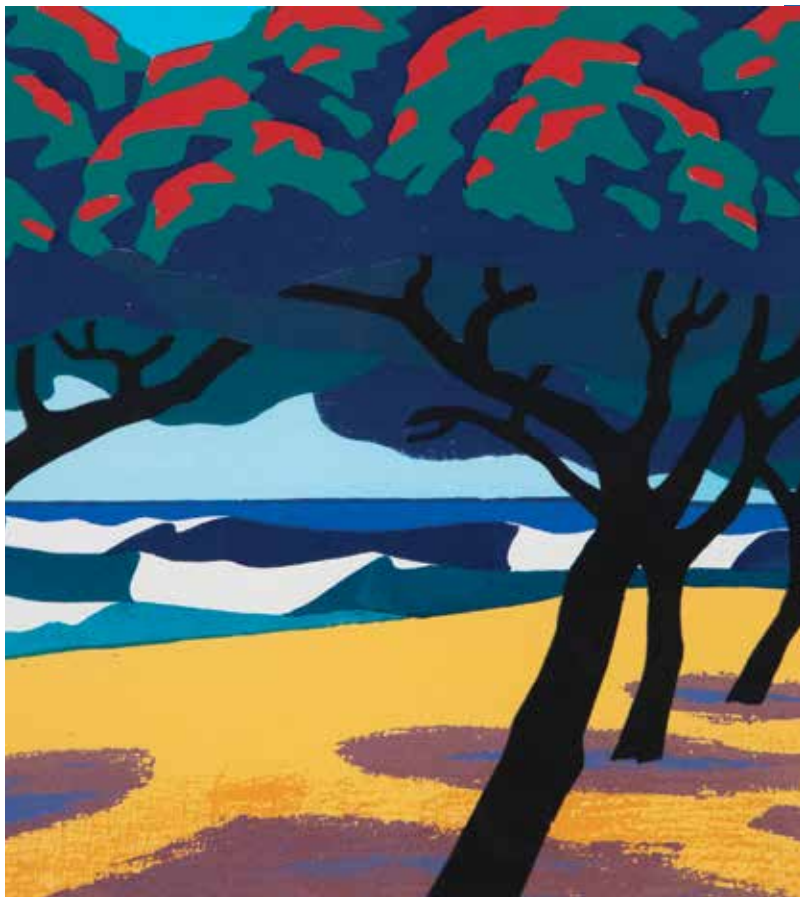
November 2020

Enquiries

Helena Walker

+64 4 472 1367
0274 713 662

art@dunbarsloane.co.nz



ENTRIES CURRENTLY INVITED

Affordable Art

December 2020

Enquiries

Helena Walker

+64 4 472 1367

art@dunbarsloane.co.nz



ENTRIES CURRENTLY INVITED

Maori & Pacific Artefacts

October 2020

Enquiries

Dunbar M Sloane

+64 9 377 5820

021 473 998

auckland@dunbarsloane.co.nz



ENTRIES CURRENTLY INVITED

Toy

October 2020

Enquiries

Bettina Frith

+64 4 472 1367

info@dunbarsloane.co.nz



ENTRIES CURRENTLY INVITED

Militaria

September/October 2020

Enquiries

Bettina Frith

+64 4 472 1367

jewellery@dunbarsloane.co.nz

CONDITIONS OF SALE

1.

The highest Bidder is deemed to be the Buyer, and if during the Auction the Auctioneer considers that a dispute has arisen, the Lot in dispute shall be immediately put up again for sale.

2.

The Auctioneer has the right to refuse any bid and to advance the bidding at his absolute discretion.

3.

The Seller shall be entitled to place a reserve on any Lot and the Auctioneer shall have the right to bid on behalf of the Seller for any Lot on which a reserve has been placed.

Dunbar Sloane Ltd have the right to withdraw or divide any Lot or to combine any two or more Lots at their sole discretion.

4.

The Buyer shall forthwith upon the purchase give in his/her name and permanent address.

The Buyer may be required to pay down forthwith the whole or any part of the Purchase Money, and if he/she fails to do so, the Lot may at the Auctioneer's absolute discretion be put up again and resold.

The Buyer shall pay to Dunbar Sloane Ltd a premium of 18% on the hammer price together with GST at the standard rate on the premium, and agrees that Dunbar Sloane, when acting as agent for the Seller, may also receive commission from the Seller.

5.

Each Lot sold by the Seller thereof with all faults and defects therein and with all errors of description and is to be taken and paid for whether genuine and authentic or not and no compensation shall be paid for the same.

Dunbar Sloane Ltd act as agents only and neither they nor the Seller are responsible for any faults or defects in any Lot or the correctness of any statement as to the authorship, origin, date, age, attribution, genuineness, provenance or condition of any Lot.

All statements in the Catalogues, Advertisements or Brochures of forthcoming sales as to any of the matters specified in (b) above are statements of opinion, and are not to be relied upon as statements of representations of fact, and intending purchasers must satisfy themselves by inspection or otherwise as to all of the matters specified in (b) above, as to the physical description of any Lot, and as to whether or not any Lot has been repaired.

The Seller and Dunbar Sloane Ltd do not make or give, nor has any person in the employment of Dunbar Sloane Ltd any authority to make or give, any representation or warranty.

In any event neither the Seller nor Dunbar Sloane Ltd are responsible for any representation or warranty, or for any statement in the Catalogues, Advertisements or Brochures of forthcoming sales.

6.

Notwithstanding any other terms of these conditions, if within 7 days after the sale Dunbar Sloane Ltd have received from the Buyer of any Lot notice in writing that in his view the Lot is deliberate forgery and within 9 days after such notification, the Buyer returns the same to Dunbar Sloane Ltd in the same condition as at the time of sale and

satisfies Dunbar Sloane Ltd had considered in the light of the entry in the Catalogue the Lot is a deliberate forgery then the sale of the Lot will be rescinded and the purchase price of the same refunded.

7.

To prevent inaccuracy in delivery, and inconvenience in settlement of Purchase, no Lot can be taken away during the times of sale, nor can any Lot be taken away unless it has been paid for in full.

All lots are to be paid for and taken away at the Buyer's expense within two working days from the sale. Purchases, whilst in our care, will be insured for this period (subject to terms and conditions).

8.

On failure of a Buyer to take away and pay for any Lot in accordance with Condition 7, Dunbar Sloane Ltd reserves any other right or remedies.

To resell the Lot or cause it to be resold by public sale, any money paid in part payment being forfeited, any deficiency attending such resale after deducting all costs incurred in connection with the Lot to be made good by the defaulting Buyer, and any surplus to be the Seller's or: To store the Lot or cause it to be stored whether at their own premises or elsewhere at the sole expense of the Buyer, and to release the Lot only after payment in full of the purchase price together with interest there on of 5% above Bank minimum lending rate, the accrued cost of removal, storage and insurance (if any) and all other costs incurred in connection with the Lot.

If the Lot has been in store pursuant to (ii) for more than 6 months, to remove the Lot from store and to exercise the right set out in (i).

ABSENTEE BIDDING FORM

94 Featherston Street, Wellington
PO Box 224, Wellington 6140, New Zealand
P +64 4 472 1367
F +64 475 7389
E info@dunbarsloane.co.nz

Type of Auction _____ Auction Date _____

Please bid on my behalf at the above sale for the following lots. These bids are to be executed as low as permitted by other bids or reserves. I agree to comply with the Conditions of Sale as printed in the Catalogue.

Full name _____

Address _____

Phone _____ Email _____

SIGNED _____ DATE _____

Lot Number	Title / Description (use block letters)	Maximum Bid Price (excluding premium)

International Bidders
Are required to provide photographic proof of ID – passport or drivers licence together with proof of address – utility bill, bank or credit card statement etc. Failure to provide this will result in your bids not being processed. For higher value lots you may also be asked to provide a bank reference.
NOTE Individual bids registered by overseas bidders must be over \$500 in individual value.

Please double check your bids and read terms below

Please submit your bid as early as possible. In the event of identical bids, the earliest will take precedence.
'Buy' bids are not accepted. The limit you leave should be the amount to which you would bid if you were to attend the Sale.
Buyers are reminded that there is a 18% buyer's premium on the hammer price plus GST on the premium. See conditions of sale.

BUYERS GUIDE

If you have not bought from Dunbar Sloane before, please read the following notes. Staff will be pleased to answer any questions you may have.

BEFORE AUCTION

The terms and conditions under which the buyer acts at a sale are detailed at the back of this catalogue. We recommend that you read and understand these conditions of business before registering to bid at an auction. This sale is subject to the conditions of business printed in this catalogue and to the reserves.

Viewing

All lots are available for inspection prior to the sale. Although staff will endeavour to answer your enquiries, and give advice, the final decision to bid, is at your discretion and liability.

Pre-Sale Estimates

The estimated prices printed below the catalogue descriptions are in New Zealand dollars and are the approximate prices expected to be realised, excluding buyers premium. They are not definitive, they are prepared well in advance of the sale and they are subject to revision.

Condition Reports

Dunbar Sloane Ltd will provide a verbal condition report if you would like an opinion on any particular lot prior to purchasing. These must be requested at least 24 hours before the commencement of auction. All goods are sold "as is" and it is up to the buyer to satisfy themselves as to the condition of an item before the auction.

THE AUCTION

Buying at Auction

You are able to bid using the following four methods:

1. Bidding in the Room

To bid at the auction you will need to register for a bidding number at the front desk either during the viewing or prior to the auction. Please bid clearly and promptly using your bidding number.

2. Absentee Bidding

If you are unable to attend the auction, Dunbar Sloane Ltd can bid on your behalf according to your written instructions. This is a free service for intended buyers. Please complete clearly the form at the back of this catalogue and submit it to Dunbar Sloane Ltd at least 24 hours before the sale to ensure it is safely received. Lots will be purchased for you as reasonably as possible, subject to other bids in the room and to reserves.

3. Telephone Bidding

If you are unable to attend the auction, you can elect to bid by telephone (subject to availability). Telephone bidding must be arranged with Dunbar Sloane Ltd prior to the sale and is subject to a minimum lot estimate of \$500 or greater. Please note that the auctioneer determines the increments in bidding, not the telephone bidder. We accept no responsibility if for whatever reason we are unable to contact you and as such recommend leaving a covering bid.

4. Live Online Bidding

We offer live online bidding on our website: www.dunbarsloane.co.nz

Registering online does not automatically register to bid, and further identification maybe required, especially if you are an International client.

Selling Rate

Fine Art auctions are generally conducted at the rate of about 60 lots per hour. However, this can vary.

AFTER THE AUCTION

Payment

Payment for purchase is due in New Zealand dollars within 48 hours from the date of sale by cash, cheque, eftpos or electronic transfer. Bank details as follows:

Dunbar Sloane Ltd
06 0501 0524945 0
Swift Code ANZBNZ22

Please include details of sale date and lot numbers with all payments.

International clients will need to add an additional \$25NZD to cover bank transfer fees

Collection of Purchases

Property purchased can be collected as soon as full payment has been received. Any items not collected within seven days of the auction may be subject to a storage and fee. Insurance (subject to terms and conditions) applies for up to two working days from the date of the sale whilst items are in our care.

Items must be paid for straight away and a second account for courier/freight charges will follow as soon as possible when we have confirmed courier charges.

Packaging and Transportation

We advise buyers to arrange transport and insurance with their preferred provider/s. We accept no responsibility for loss or damage in transit. For smaller items able to be couriered, Dunbar Sloane Ltd can pack and courier for a fee. This is to be paid before the goods leave our premises. We pack with care, however we take no responsibility for damage once your goods leave our premises. It is up to the buyer to arrange insurance to cover any damage or loss in transit.

BUYERS PREMIUM

The buyer shall pay to Dunbar Sloane Ltd a premium of 18% of the hammer price plus GST on the premium only—effectively adding 20.70% to the hammer price.



269 | 268



267



Dunbar Sloane Ltd
94 Featherston Street
Wellington CBD
www.dunbarsloane.com