



# FINE & ESTATE JEWELLERY

ACCOUTREMENTS & GOLD COINS

9 DECEMBER 2020







# FINE & ESTATE JEWELLERY

## WITH ACCOUTREMENTS & GOLD COINS

**WEDNESDAY 9 DECEMBER 2020**

SESSION ONE - 2PM START  
Accoutrements & Gold Coins  
Lot 1 - 142

SESSION TWO - 4PM START  
Fine & Estate Jewellery  
Lot 150 - 428

### LIVE BIDDING

Please note we now offer our own live online bidding service.

For instruction see our website:

[www.dunbarsloane.co.nz](http://www.dunbarsloane.co.nz)

Online registrations and absentee bids must be made at least 2 hours before the auction commences, or 24 hours if you are an International client

### BUYERS PREMIUM

Each lot is subject to 18% + GST buyers premium

### VIEWING SCHEDULE

Sunday 6th December 12noon - 3pm

Monday 7th December 9am - 4pm

Tuesday 8th December 9am - 4pm

Wednesday 9th December 9am - 1pm

### ENQUIRIES

Bettina Frith

+64 4 472 1367

[jewellery@dunbarsloane.co.nz](mailto:jewellery@dunbarsloane.co.nz)

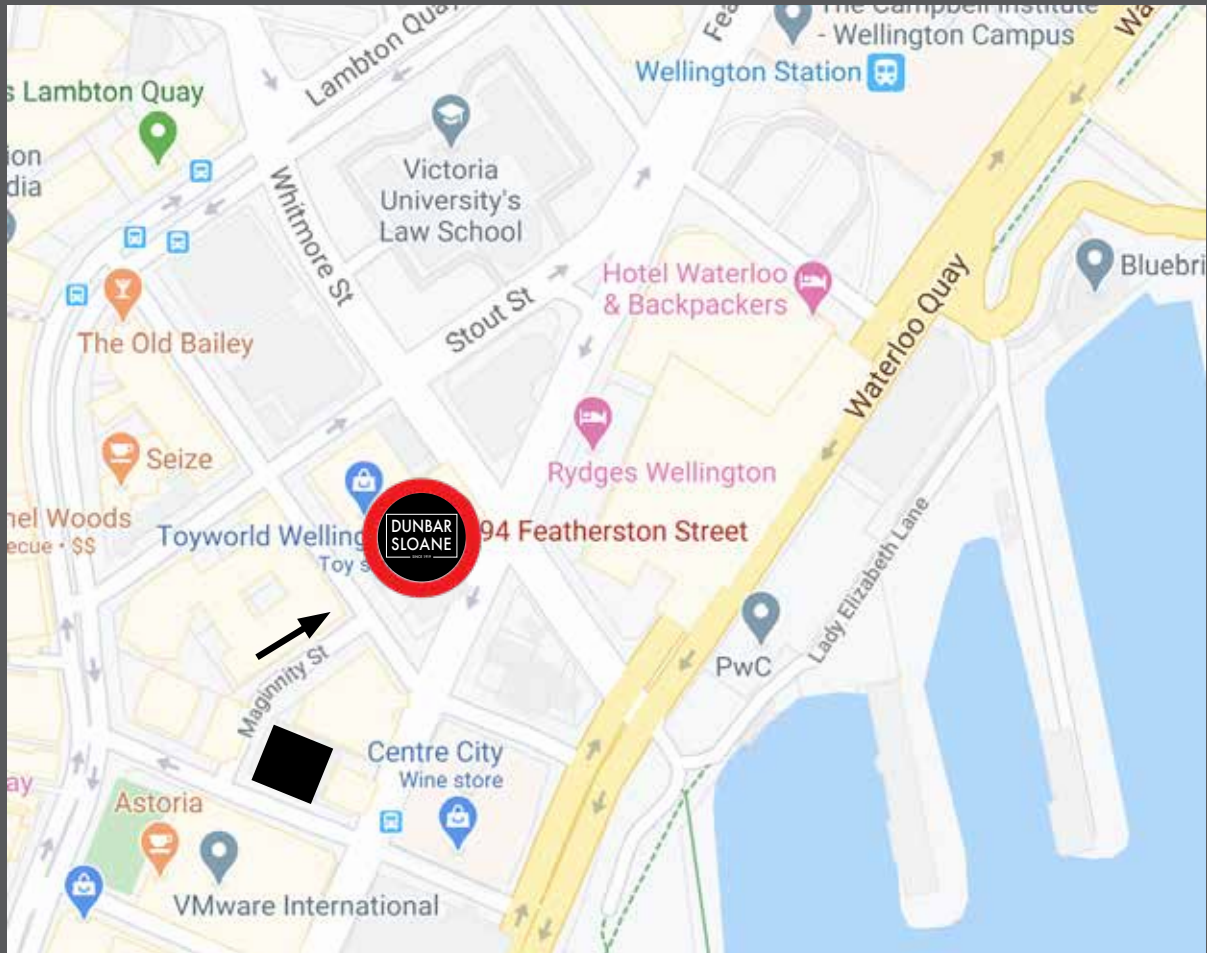
PO Box 224, Wellington 6140

[www.dunbarsloane.com](http://www.dunbarsloane.com)





# WE HAVE MOVED 94 FEATHERSTON STREET



Our Wellington auction house has shifted to new premises, located in Kiwi Wealth House  
corner of Featherston & Ballance Street.

Our phone number, email address and bank details remain unchanged.

We look forward to welcoming you to our new premises.

Dunbar Sloane Ltd  
94 Featherston Street  
Wellington CBD  
[www.dunbarsloane.com](http://www.dunbarsloane.com)





Krk



**SESSION ONE**

**ACCOUTREMENTS**

**GOLD COINS**

**Wednesday 9 December 2020**

**2pm start**

**Lot 1 - 142**



## ACCOUTREMENTS

**1**  
**Victorian Treen Shoe Snuff Box** with sliding lid, together with a small Chinese carved and reticulated circular box and cover (af)  
\$80 - \$160

**2**  
**C19th Horn Snuff Box** plain oblong with hinged lid, 8.5 cm length  
\$40 - \$80

**3**  
**Three Victorian Snuff Boxes** two horn & tortoiseshell example  
\$100 - \$200

**4**  
**C19th Enamel Patch Box** 'A Trifle from Pool' together with S/S vesta case, papier mache snuff box and Japanese box (some faults)  
\$60 - \$120

**5**  
**Mixed Assortment** chrome whistle, two pill boxes, locket and Britains monkey figure  
\$30 - \$80

**6**  
**S/S Plain Circular Pill Box** Birmingham 2005  
\$60 - \$120

**7**  
**Shaped Rectangular Snuff Box** Birmingham 1859 machine engraved with presentation inscription  
\$350 - \$500

**8**  
**Edw VII S/S Oval Snuff Box** hinged lid with allover engraved scrolling decoration, Birmingham 1908  
\$80 - \$140

**9**  
**Geo V S/S Folding Photo Frame** engine turned decoration, Chester 1919  
\$140 - \$260

**10**  
**Two S/S Circular Photograph Frames** 11 & 7cm dia  
\$100 - \$200

**11**  
**Geo V S/S Photograph Frame** arched top, with ribbon decorated outer and inner frame, 30cm height  
\$160 - \$280

**12**  
**Edw VII S/S Art Nouveau Photograph Frame** embossed with flowers and scrolls, Birmingham 1906  
\$120 - \$240

**13**  
**C1900 Italian Grand Tour Micro Mosaic Hand Mirror** decorated with daisies on a turquoise ground, 18cm height, together with a matching small photo frame inset with a miniature portrait on ivory of Moghul Emperor Shah Jahan, 8cm height  
\$100 - \$200

**14**  
**Two C1900 Italian Grand Tour Micro Mosaic Photo Frames** all floral decorated double hinged folding frame and single frame 8 x 13cm, 6cm height  
\$100 - \$200

**15**  
**Two C1900 Italian Grand Tour Micro Mosaic Photo Frames** floral patterns of double horse shoe and circular 9 x 6cm, 5.5cm  
\$100 - \$200

**15a**  
**Victorian Grand Tour Pietra Dura Photo Frame** oval floral panel inset with hardstones in gilt metal hinged frame  
\$100 - 200

**16**  
**Two Royal Worcester Porcelain Scent Flasks** of arrowhead shape, one in blue and gilt, the other painted with a butterfly, damaged and lacking stopper  
\$100 - \$200

**17**  
**Japanese Satsuma & S/S Top Scent Flask** quatrefoil outline with two floral painted oval panels, hallmarks for 1907  
\$80 - \$160

**18**  
**Early C20th (American) Silver Plate Belt** each link formed as a butterfly, 70cm length  
\$80 - \$200

**19**  
**Art Nouveau Enamelled Buckle** bright florals  
\$30 - \$80

**20**  
**Victorian S/S Topped & Cushion Cut Glass Scent Bottle** London 1883 together with modern enamelled box in the form of a butterfly and small Italian flower trough  
\$60 - \$120

**21**  
**Set Ten Russian Graduated Lacquered Eggs** each hand painted with a winter landscape with troikas, largest 21cm height  
\$100 - \$200

**22**  
**Eastern Bronze & Enamel Cigarette Box** oblong shape with detachable lid, the base stamped foreign, 12 cm width  
\$100 - \$200

**23**  
**Meerschaum Pipe** bowl carved with eagle talons by Whites of Scotland  
\$30 - \$60

**24**  
**Set of S/S Coffee Spoons** together with S/S Vesta Birmingham 1905 & S/P Cigarette Case,  
\$60 - \$120

**25**  
**Interesting Victorian S/S Combination Sealing Wax & Vesta Holder** cylindrical shape with scrolling foliate repousse design, hinged at both ends one with camel finial, London 1894, maker Samuel Jacob  
\$160 - \$280

**25a**  
**Fine Silver Gilt Christening Spoon** heavily scroll chased terminal fitted in original case, Robert Gray & Son, Glasgow 1827  
\$240 - \$360

**26**  
**Two S/S Cigarette Cases & Vesta Case**  
\$100 - \$200

**27**  
**Two S/S Vesta Cases** together with small European glass scent bottle, the gilt metal lid painted with a townscape  
\$100 - \$200

**28**  
**S/S Sovereign Holder** and silver plated vesta case  
\$50 - \$100

**29**  
**Art Deco Glass & Nickel Plated Deskstand,** oval shape with bevelled glass base, inkwell, pen supports and calendar with detachable plastic month cards, 18cm width  
\$40 - \$80

**30**  
**Small Horse Hoof Inkwell,** with S/P mount and shoe  
\$100 - \$200

**31**  
**Victorian MOP Calling Card Case,** fitted blue silk interior containing numerous humorous cards  
\$60 - \$120

**32**  
**Two Victorian MOP Calling Card Cases & Pair Opera Glass with Thimble Holder,** all with faults  
\$80 - \$160

**33**  
**Late Vict MOP Shell Perfume Bottle** with carrying chain, hinged lid and plated floral collar  
\$40 - \$80





7



37



38



71



13



14



1



16



31



70



27



30



49



58



60



73

- 34**  
**S/S Circular Vesta** with sword shaped page marker and medallion Birmingham 1904  
\$100 - \$200
- 35**  
**S/S Stamp Case Fob** Small S/S Purse with finger chain, button hook and double ended scent flask Birmingham 1915  
\$140 - \$250
- 36**  
**Two Pairs Of Vintage Pince-nez** both with leather cases, together with a cut throat razor, pair of opticians testing spectacles and antique brass cigarette roller by George Cantouris, London  
\$60 - \$140
- 37**  
**Late Victorian S/S Spider Pin Cushion**, Birmingham 1897 (missing one feeler)  
\$200 - \$400
- 38**  
**Victorian Hook Rug Needle Shuttle Loom Sewing Tool**, with floral painted ebonised wooden handles, Pat. Floral #Jewel 1888 together with pair stork scissors  
\$50 - \$120
- 39**  
**Singer USA Miniature Childs Sewing Machine**  
\$80 - \$180
- 40**  
**Six Various Thimbles** Dorcas with original box, other, two s/s, cloisonne and plastic  
\$60 - \$120
- 41**  
**Victorian MOP Manicure Box** oblong shape, silk and velvet interior with various associated implements, 15.5 cm width  
\$100 - \$200
- 42**  
**Edw VII S/S Trinket Box** quatrefoil shape, embossed scrolling decoration, engraved initials to the hinged lid, Birmingham 1906  
\$100 - \$200
- 43**  
**Victorian Burr Walnut Sewing Work Box** rosewood banded with MOP and abalone inlays, fitted interior top tray still with work contents of cottons, pin cushions and various  
\$100 - \$200
- 44**  
**Victorian Burr Walnut & Ebonised Portable Dressing Table Box**, fitted interior with lift out tray, 10 various bottles and jars, and sectional drawer below,  
\$200 - \$400
- 45**  
**Victorian Faded Walnut Work Box**, parquetry inlay banding  
\$50 - \$100
- 46**  
**S/S Bound Book of Common Prayer** cover with embossed cherub pattern, together with Mrs Beetons Cook Book (lacks TP and prelims, and page 1 torn) and other minor cook book  
\$100 - \$200
- 47**  
**Collection Victorian New Year Cards**  
Religious cards and book markers  
\$50 - \$150
- 48**  
**Salvador Dali Avenue of Silk 1957 Limited Edition Printed Silk Scarf** (does show a stain) 80 x 82cm  
\$400 - \$600
- 49**  
**Late Victorian Black Silk & Floral Embroidered Piano Shawl**, with wide fringe (some faults)  
\$100 - \$300
- 50**  
**Victorian Full Length Ladies Riding Cape** fine black wool material with interior linings of red and tartan velvets, original owner Francis Furman Hill born 1845  
\$350 - \$500
- 51**  
**Two Edwardian Christening Gowns and Petticoat** fine cotton and lace (one gown showing some rust marks)  
\$60 - \$160
- 52**  
**Victorian Hand Made Lace & Net Bonnet** together with wedding veil and black lace fingerless gloves  
\$60 - \$120
- 53**  
**Selection Linen and Lace** with silk blouse and handkerchiefs  
\$50 - \$100
- 54**  
**Vintage Wooden Hat Mould**  
\$60 - \$100
- 55**  
**Pair Vintage Redferns Childs Clog Dance Shoes**  
\$30 - \$50
- 56**  
**Vintage Post WWII Arabian Traditional Garment** black net with ornamental varying braid trims with under dress of fine linen light salmon pink brocade (some faults)  
\$100 - \$300
- 57**  
**Vintage Post WWII Arabian Traditional Garments** three Keffiyeh of fine cotton with embroidered borders together with single agal (some faults)  
\$60 - \$120
- 58**  
**Vintage Post WWII Arabian Traditional Garments** three embroidered prayer caps and crocheted cap  
\$60 - \$120
- 59**  
**Vintage Post WWII Arabian Traditional Garments** four embroidered prayer caps and leather scandals  
\$60 - \$120
- 60**  
**Victorian Parasol** finely carved marine ivory folding handle, with black hand tatted lace canopy on silk (silk with faults)  
\$100 - \$250
- 61**  
**Edwardian Lady's Parasol** with ivory handle, the pommel engraved with initial D  
\$60 - \$120
- 62**  
**Edwardian Lady's Parasol** the horn handle with embossed gold collar  
\$60 - \$120
- 63**  
**Victorian Umbrella** fruitwood shaft carved duck head finial with moving beak, original brown canopy with faults  
\$100 - \$250
- 64**  
**Victorian Umbrella** fruitwood shaft carved with owl finial, refurbished light tan canopy  
\$100 - \$250
- 65**  
**Victorian Umbrella** fruitwood shaft with carved cat head finial, 15ct gold ribbon collar, original blue canopy with faults  
\$100 - \$250
- 66**  
**Victorian Umbrella & Other (2)** duck head finial in horn, original purple canopy with faults together with C1950's all original umbrella  
\$100 - \$200
- 67**  
**S/P Embossed Pin Tray** together with S/P change purse, MOP scent flask and fan  
\$60 - \$120
- 68**  
**Two Early C20th Silver Plate Purses**, with finger chains  
\$40 - \$80
- 69**  
**Miniature Chinese B&W Vase** with modern jade pendant and Mughal school pendant painted on MOP (af)  
\$60 - \$120

- 70**  
**Five Tortoiseshell & Simulated Pieces** comprising of folding magnifying glass, two cigarette cases and two circular dressing table jars  
\$100 - \$200
- 71**  
**Edwardian S/P Jewellery Casket** oblong shape the hinged lid with engraved decoration and initials on ball feet, 15.5cm width  
\$50 - \$100
- 72**  
**Translucent Green Hardstone Box** plain rectangular shape all with silver mounts 14cm length  
\$300 - \$500
- 73**  
**Edwardian S/S Housekeepers Chatelaine** comprising notepad, and pencil, needle case, heart shaped pill box and button hook  
\$300 - \$500
- 74**  
**Seven Various Small S/S Items** comprising embossed trinket/pin tray, two pepperettes, two filigree rickshaws, thimble and nail buffer  
\$100 - \$200
- 75**  
**Five Small S/S Lidded Vanity Pots** together with a S/S handled shore horn & comb  
\$100 - \$200
- 76**  
**Cased S/S Manicure Set** six pieces with ornate embossed handles (brush head missing)  
\$60 - \$120
- 77**  
**Geo V Art Deco S/S & Guilloche Enamel Top Scent Flask** conical cut glass body, Birmingham 1932, 10.5cm height  
\$80 - \$140
- 78**  
**Late Vict S/S Top Cut Glass Scent bottle,** spherical shape with fluted screw on top, hallmarks for London 1897  
\$60 - \$140
- 79**  
**Two S/S Topped Glass Dressing Table Vanity Pots** the smaller lid decorated with an acorn  
\$50 - \$120
- 80**  
**Three S/S Cut Glass Scent Bottles** of sizes  
\$100 - \$200
- 81**  
**Four S/S Topped Glass Dressing Table Vanity Items,** comprising two scent bottles, small ruby flashed smelling salts bottle and circular jar  
\$60 - \$120
- 82**  
**S/S Lidded Cut glass Hair Grip Holder** together with a S/S topped cut glass scent bottle, larger square glass bottle & stopper and S/S handled button hook  
\$60 - \$120
- 83**  
**Two S/S Top Glass Vanity Bottles** together with a fluted glass mustard pot, of sizes  
\$100 - \$200
- 84**  
**Edwardian VII S/S Backed Four Piece Dressing Table Set** embossed with cherubs pattern comprising hand mirror and three brushes, London 1906/07  
\$100 - \$200
- 85**  
**Edw VII S/S Backed Three Piece Dressing Table Set** comprising, hand mirror with later small scroll handle (af) and pair of brushes, Chester 1901  
\$60 - \$120
- 86**  
**Eight Various S/S Dressing Table Accessories** comprising hand mirror, hair brush and crumb brush, two button hooks, nail file, cuticle and tweezers  
\$140 - \$260
- 87**  
**Selection Assorted** MOP pill box, mini scales, brush, chrome slide box, S/S pocket watch case only, with metal fish beads and Murano style beads  
\$50 - \$100
- 91**  
**.800 Silver Vesta** embossed rustic design on modern trace link neck chain  
\$80 - \$160
- 92**  
**Cased Victorian 9ct Cuff-Links and Shirt Studs** finely scroll chased, dated 1894 Birmingham  
\$200 - \$400
- 93**  
**Pair Fancy S/Plate and Red Enamel Cuff-Links** chain linked bars fitted in Turnbull & Asser Box, the outfitters to James Bond (one imitation ruby end missing)  
\$60 - \$120
- 94**  
**Late C19th European Black Forest Hunting Stick Pin** ornate silver mount of oak leaves holding two deer teeth  
\$50 - \$100
- 95**  
**NZ 9ct Gold Kia Ora Albert**  
\$160 - \$280
- 96**  
**Leather Sovereign Holder** double holder with 9ct mounted black braid fob, together with 9ct sword brooch and 9ct mounted shark tooth pendant (faults)  
\$260 - \$360
- 97**  
**Two 9ct Mounted Greenstone Pendants** with 9ct shield shape greenstone stickpin and small tiki pendant on chain  
\$100 - \$200
- 98**  
**Modern 9ct Tiki Brooch**  
\$100 - \$200
- 99**  
**Victorian Gold Framed Miniature Hand Coloured Photo Pendant** head and shoulder portrait of a gent  
\$100 - \$200
- COINS**
- 100**  
**2019 Sovereign (UNC)**  
\$600 - \$800
- 101**  
**2019 Sovereign (UNC)**  
\$600 - \$800
- 102**  
**1975 Krugerrand**  
\$3,000 - \$3,500
- 103**  
**1975 Krugerrand**  
\$3,000 - \$3,500
- 104**  
**1975 Krugerrand**  
\$3,000 - \$3,500
- 105**  
**1975 Krugerrand**  
\$3,000 - \$3,500
- 106**  
**UK Commemorative Proof Coin Collection 1981,** Gold Five Pound Coin, gold sovereign, silver crown commemorating the Royal Wedding of Prince Charles to Lady Diana, 50p, 10p, 5p, 2p, 1p, 1/2p  
\$5,000 - \$6,000
- 107**  
**1918 Sovereign**  
\$500 - \$750
- 108**  
**1887 Gold Sovereign**  
\$600 - \$800
- 109**  
**George III Gold Half Guinea (worn)**  
\$600 - \$800



- 110**  
**1893 1 Pond Gold Coin** together with chrome plated sovereign case (faults)  
\$600 - \$700
- 111**  
**1915 Austrian 1 Ducat Re-strike Gold Coin** in 9ct pendant mount  
\$200 - \$400
- 112**  
**1908 Half Sovereign**  
\$300 - \$400
- 113**  
**1896 Half Sovereign**  
\$300 - \$400
- 114**  
**1900 Half Sovereign**  
\$300 - \$400
- 115**  
**1916 Half Sovereign**  
\$300 - \$400
- 116**  
**1908 Half Sovereign**  
\$300 - \$400
- 117**  
**1915 Half Sovereign**  
\$300 - \$400
- 118**  
**1908 Sovereign** 9ct mounted as a ring  
\$600 - \$800
- 119**  
**1990 American Eagle Five Dollar Gold Coin**  
\$200 - \$400
- 120**  
**US 1857 Gold One Dollar Coin** together with Belgium, Koning Albert I (1910 - 1934) tiny gold coin both with pendant mounts  
\$100 - \$200
- 121**  
**1851 US Liberty Head Type 1 Gold Coin** U.S. Mint together with another, worn  
\$300 - \$500
- 122**  
**US Replica 1804 Liberty Bust Dollar** and 1913 Five Cents  
\$100 - \$200
- 123**  
**1996 One Half Pound Fine Silver .999** The Washington Mint  
\$400 - \$600
- 124**  
**UK Queen Victoria Replica 1847 Gothic Crown** oversize approx 396gm silver  
\$400 - \$600
- 125**  
**Fiji Islands 1974 \$25 Centennial Silver Coin** x2  
\$100 - \$200
- 126**  
**Framed Display 50th Anniversary Conquest of Mt. Everest** silver Nepalese Coins  
\$100 - \$200
- 127**  
**Ancient Greek Bronze Coin** King Ptolemy III (246-222 BCE) Zeus-Ammon/Ptolemaic badge designs  
\$100 - \$200
- 128**  
**Brandenburg-Prussia**, Friedrich III 1688-1701, 2/3 Thaler 1689 LC S, Cuir. bust r., Rv.Crowned coat of arms above denomination  
\$100 - \$200
- 129**  
**Two 1687 James II Silver Threepence Coins**  
\$50 - \$100
- 130**  
**1797 Cartwheel Penny**, (worn) together with Victoria 1892 crown and three Georgian silver coins (worn)  
\$80 - \$180
- 131**  
**Austria Maria Theresia 1 Thaler 1780 Silver Coin**, with 1915-1916 Persian 5000 Dinars silver coin  
\$50 - \$100
- 132**  
**Selection US Vintage Coinage**, 1972\$1x2, half dollars 1967x7, 1969, 1972, 1976x2, 1989, \$1 1979, quarter \$ 1942, 1954, 1944, five cents x3, one dime and US Navy medallion  
\$50 - \$100
- 133**  
**34 US Half Dollar Coins**, 1935, 1936, 1942x5, 1943x2, 1952, 1961, 1962, 1964x4, 1966, 1967x2, 1971x2, 1972x4, 1973x3, 1974, 1976x2, 1991, 1992x2  
\$60 - \$120
- 134**  
**NZ 1935 Half Crown**, and Dominion Diary Show, Hawera 1910 medallion  
\$30 - \$80
- 135**  
**Victoria Jubilee Crown 1889**, with half crown 1887, 1806 penny (worn), lead Victoria Jubilee medallion, NZ 1935 Sixpence, & enamelled 1887 coin with pendant mount  
\$100 - \$200
- 136**  
**Woman's Work Exhibition Sydney 1892 Medal In Bronze**, by Amor, Sydney 3.9cm  
\$100 - \$200
- 137**  
**Cased Bronze Royal Commemorative Medallion** King Edward VII and Queen Alexandra Coronation 1902  
\$30 - \$80
- 138**  
**Admiral Vernon Bronze Medal** 1740 conquest of Fort Chagre in West Indies by British 4cm together with other worn  
\$100 - \$200
- 139**  
**Horticultural Society of London Silver Medallion** Thomas Andrew Knight President, awarded to Mr J.A. Henderson...1840  
\$100 - \$200
- 140**  
**Two Commemorative Medals**, 1887 Victoria Jubilee NZ Lyttleton's Celebration, Children's Souvenir Visit Duke & Duchess of Cornwall Visit to NZ 1901, gaming token and 1895 silver shilling  
\$50 - \$120
- 141**  
**1779 Admiral Keppel Acquitted by Court Martial Bronze Gilt Medal**, 3.4cm with 1770 Macnivan & Cameron Pens medal and three GeoIII gaming tokens  
\$50 - \$100
- 142**  
**Ancient Roman Bronze Ring**  
\$100 - \$200



124



106



123



102



103



104



100



101



109



111



118



127



121



128



129



136



138



139







**SESSION TWO**

**FINE & ESTATE JEWELLERY**

**Wednesday 9th December**

**4pm start**

**Lot 150 - 428**

- 150**  
**18ct Seven Stone Diamond Floret Cluster Ring** modern raised bead claw set round brilliant cuts approx 0.50cts, together with 18ct curve band channel set with 9 round brilliant cut diamonds cluster '20 market \$1,485, curve band '20 market \$987 \$600 - \$1,000
- 151**  
**Pair 18ct White Diamond Floret Cluster Stud Earrings** each of seven bead claw set round brilliant cuts approx 0.99cts tdw, pierced '20 market \$1,017 \$400 - \$600
- 152**  
**14ct White Gold Solitaire Diamond Ring** four corner claw set round brilliant cut approx 0.70cts with 14ct wedding band '16 retail \$6,700 \$1,700 - \$2,000
- 153**  
**18ct Solitaire Diamond Ring** modern rub-over set round brilliant cut approx 0.48cts '19 replacement \$5,900 \$1,200 - \$1,500
- 154**  
**18ct White Gold Solitaire Diamond Ring** claw set round brilliant cut approx 0.65cts '20 replacement \$8,400 \$2,500 - \$3,000
- 155**  
**9ct 13stone Sapphire & Diamond Cluster Ring** blue oval mixed cut sapphire with diamond surround together with 9ct plain wedding band '20 Replacement \$2,980 \$800 - \$1,200
- 156**  
**18ct Sapphire & Diamond Marquise Cluster Ring** central marquise mixed cut Ceylonese sapphire approx 1.60cts with ten round brilliant cut diamonds surrounding approx 1cts tdw '20 replacement \$11,700 \$3,500 - \$4,000
- 157**  
**All Platinum 41stone Emerald & Diamond Cluster Ring** central pear cut light green emerald approx 1.25cts with two tiered surround of individual set Swiss cut diamonds approx 0.75cts '20 replacement \$9,100 \$2,000 - \$3,000
- 158**  
**18ct White Gold 53stone Emerald & Diamond Cluster Ring** central rectangular bright green emerald approx 1.75cts with two tier pave set surround of diamond single cuts approx 1cts '20 replacement \$11,600 \$4,500 - \$5,000
- 159**  
**14ct 39stone Emerald & Diamond Ring** central round cut emerald with twelve round brilliant cut shoulder diamonds on cross-over bands channel set with baguette cut diamonds approx 1cts tdw '20 replacement \$5,100 \$1,200 - \$1,400
- 160**  
**18ct White Gold Solitaire Diamond Ring** raised six claw set round brilliant cut approx 3.05cts on fancy shoulders set with four baguette cut and twelve round brilliant cut diamonds '20 replacement \$33,500 \$10,000 - \$12,000
- 161**  
**All Platinum Solitaire Diamond Ring** four pillar claw set 'Tycoon' rectangular mixed cut diamond approx 3.01cts '15 Replacement \$162,600 \$45,000 - \$55,000
- 162**  
**18ct White Gold Tanzanite and Diamond Pendant** central rub-over oval faceted tanzanite on folded ribbon design platform all pave set with 99 round brilliant cut diamonds approx 2.9cts tdw on 14ct white gold neck chain '20 replacement \$14,950 \$4,000 - \$5,000
- 163**  
**18ct Six Stone Diamond Necklet** Omega chain with seven gold and silver satin finish panels interspaced with round brilliant cut diamonds approx 1.08cts tdw '20 replacement \$11,700 \$3,500 - \$4,000
- 164**  
**18ct Diamond Necklace** all graduated loop design diamond set of baguette and round brilliant cuts approx 31.10cts '20 replacement \$115,000 \$25,000 - \$30,000
- 165**  
**18ct 898stone Fancy Light Yellow Diamond Pendant Necklace** all diamond set filigree butterfly shape pendant with diamond drops on diamond chain approx 24.54cts tdw '20 replacement \$99,000 \$25,000 - \$30,000
- 166**  
**14ct White Gold Sapphire & Diamond Ring** centre oval dark royal blue sapphire approx 6.68cts with surrounding 16 round brilliant cut diamonds approx 1.12ct tdw '20 Australian Gemmological Valuation Available on Request \$2,500 - \$2,800
- 167**  
**14ct White Gold Sapphire & Diamond Bracelet** 12 oval cut dark royal blue sapphires approx 32.94cts tsw, each with pave set surround of 20 round brilliant cut diamonds approx 3.30cts tdw '20 Australian Gemmological Valuation Available on Request \$8,500 - \$10,000
- 168**  
**14ct White Gold Sapphire & Diamond Tennis Type Bracelet** 21 emerald cut dark blue sapphires approx 14.46cts tsw with 22 round brilliant cut diamonds interspacing approx 0.55cts tdw '20 Australian Gemmological Valuation Available on Request \$5,000 - \$7,500
- 169**  
**All Platinum 48stone Diamond Tennis Bracelet** hinged four claw set round brilliant cuts approx 8.22cts tdw '20 Australian Gemmological Valuation Available on Request \$14,000 - \$16,000
- 170**  
**14ct White Gold Modern 34stone Diamond 'Bolo' Bracelet** four claw hinged round brilliant cuts approx 1.66cts tdw with the lengthening chain finished with six diamonds '20 Australian Gemmological Valuation \$3,000 - \$3,500
- 171**  
**14ct Solitaire Diamond Ring** heart brilliant cut light yellow diamond approx 1.01cts with 32 round brilliant cut diamond surround and shoulders approx 0.25cts tdw '20 Australian Gemmological Valuation Available on Request \$4,000 - \$4,500
- 172**  
**14ct Pearl, Sapphire & Diamond Dress Ring** single 12mm pink/purple cultured pearl, with two shoulder pear cut sapphires, 54 round brilliant cut diamonds '20 Australian Gemmological Valuation Available on Request \$1,000 - \$1,400





- 173**  
**Pair 14ct White Gold Pearl, Sapphire & Diamond Pendant Earrings** each of single 11.50mm pink/purple cultured pearl with pear cut pink sapphire diamond surround stud head, pierced backs, matching above lot  
 '20 Australian Gemmological Valuation Available on Request  
 \$1,200 - \$1,500
- 174**  
**10ct White Single South Sea Pearl Dress Ring** 10mm round pearl with two pointer diamonds  
 '20 replacement \$3,600  
 \$800 - \$1,000
- 175**  
**9ct Seven Cultured Pearl Cluster Ring** interspaced with nine pointer diamonds  
 '20 replacement \$5,100  
 \$1,000 - \$1,200
- 176**  
**14ct Rose Gold Morganite & Diamond Double Halo Dress Ring** central oval cut light peach pink Morganite approx 13.52cts with double frame surround of 88 round brilliant cut diamonds approx 0.98cts tdw  
 '20 Australian Gemmological Valuation Available on Request  
 \$3,500 - \$4,000
- 177**  
**14ct 92stone Emerald & Diamond Necklace** 46 hinged links of oval bright green emerald interspaced with round brilliant cut diamond, 31.94cts tew, 1.68cts tdw  
 '19 replacement US\$41,950  
 \$15,000 - \$20,000
- 178**  
**18ct White Gold Emerald & Diamond Pendant** central rectangular bright emerald with double frame of 99 baguette cut diamonds edged with 116 round brilliant cuts approx 3.09cts tdw  
 '20 RMV \$19,600  
 \$6,000 - \$7,000
- 179**  
**18ct White Gold Ruby & Diamond Pendant Necklace** central floret cluster with three tassels of rubies and diamonds on ruby and diamond chain support on fine trace link chain, 25 pear mixed cut bright rubies approx 6.68cts trw with 51 round brilliant cut diamonds 0.80cts tdw  
 '19 RNV \$24,500  
 \$7,000 - \$8,000
- 180**  
**18ct 27stone Ruby & Diamond Modern Design Hinged Link Necklace** nine links of central ruby flanked by diamonds interspaced and supported rail links a brushed and polished finish, nine rubies approx 1.26cts trw, 18 brilliant cut diamonds approx 0.36cts tdw with matching 14ct Ruby and Diamond Hinged Link Bracelet, six rubies approx 1.32 trw, twelve diamonds approx 0.24cts  
 necklace '19 replacement \$8,500  
 bracelet '19 replacement \$3,800  
 \$3,600 - \$4,500
- 181**  
**Pair 18ct White Gold Ruby & Diamond Cluster Earrings** each of three oval mixed cut rubies on scroll bar pave set with 15 round brilliant cuts, pierced backs  
 '20 replacement \$4,950  
 \$1,400 - \$1,800
- 182**  
**14ct 37stone Ruby & Diamond Cluster Ring** central oval ruby approx 0.90cts with surround of round brilliant cut diamonds on ruby and diamond banded shoulders  
 '20 replacement \$6,900  
 \$1,500 - \$1,800
- 183**  
**18ct Single Star Ruby Dress Ring** fancy raised scroll gallery and engraved shoulders, oval cabochon ruby approx 3cts  
 '20 replacement \$6,400  
 \$1,800 - \$2,200
- 184**  
**14ct 17stone Ruby & Diamond Cluster Ring** central rub-over ruby with eight channel set square cut rubies and eight diamond surround  
 '20 replacement \$3,200  
 \$800 - \$1,200
- 185**  
**14ct White Gold Diamond Necklace** five roundels each set with single diamond on rectangular rail link with double pierced sides, round brilliant cut diamonds approx 1.25cts tdw  
 '20 replacement \$10,200  
 \$3,000 - \$3,500
- 186**  
**18ct White Gold Diamond Bracelet** articulated links of channel set baguette cuts edged with round brilliant cuts approx 3.81cts tdw  
 '20 replacement \$24,100  
 \$7,000 - \$8,000
- 187**  
**18ct White Gold Diamond Hinged Bangle** channel set band of baguette cuts, edged with round brilliant cut diamonds approx 4.16cts tdw  
 '20 replacement \$21,500  
 \$6,000 - \$7,000
- 188**  
**18ct White Gold 79stone Diamond Hinged Snap Bangle** graduated band of 'Greek Key' pattern, three head panels pave set with diamonds approx 0.50cts tdw  
 '20 replacement \$8,900  
 \$2,000 - \$2,500
- 189**  
**Heavy 18ct Cable Link Neckchain** with 110 stone diamond pave set cross pendant approx 2.35cts tdw 63cm chain length  
 '13 replacement \$27,750  
 \$12,000 - \$15,000
- 190**  
**9ct Curb Link Charm Bracelet** 43 charms attached including two half sovereigns, NZ charms  
 '09 Replacement \$19,640  
 \$10,000 - \$12,000
- 191**  
**9ct Mixed Fancy Link Bracelet**  
 '20 market \$940  
 \$400 - \$600
- 192**  
**9ct Modern Flattened Curb Link Bracelet**  
 '20 market \$945  
 \$500 - \$700
- 193**  
**14ct Hollow Link Bracelet** Italian design rectangular facet links  
 '20 market \$1,065  
 \$400 - \$600
- 194**  
**14ct & 10ct Single Emerald Pendant** rub-over four corner claw set square step cut deep green emerald 2.990cts with single diamond set to suspender loop  
 '20 replacement \$16,600  
 \$5,000 - \$6,000
- 195**  
**Art Deco 18ct & Platinum Solitaire Diamond Ring** raised box set old mine cut diamond approx 0.53cts  
 '05 replacement AU\$3,790  
 \$1,000 - \$1,400
- 196**  
**Victorian 18ct Five Diamond Bridge Ring** claw set old cut diamonds approx 0.25cts x2, 0.20cts x2, 0.18cts  
 '05 replacement AU\$4,100  
 \$1,000 - \$1,400
- 197**  
**Early C20th 18ct Three Stone Sapphire & Diamond Bridge Ring** scroll claw set central round deep blue sapphire flanked by early brilliant cut diamonds approx 0.25cts each  
 \$1,000 - \$1,400



179



164



165



162



194



178



163



177



185

- 198**  
**Victorian 18ct Five Stone Turquoise & Pearl Bridge Ring** multi-claw set  
 '16 replacement \$2,750  
 \$600 - \$800
- 199**  
**Art Deco All Platinum 96stone Diamond Two Piece Dress Clip/Brooch** each clip set with central diamond with pave set diamond geometric design frame, all old European cuts approx 0.90cts, 0.86cts, 7.71cts (9.47cts tdw), on 9ct white gold detachable frame and pin with original box for Jays, Oxford St., London  
 '20 replacement \$39,000  
 \$12,000 - \$16,000
- 200**  
**Art Deco All Platinum 73stone Diamond Brooch** shaped lozenge layered design all pave set with central old European cut Diamond approx 0.33cts with surround of single cut diamonds approx 1.94cts tdw  
 '20 replacement \$13,500  
 \$3,500 - \$4,500
- 201**  
**Early C19th 18ct & Amethyst Necklace**  
 26 graduated cushion shape amethysts with nine stone amethyst cluster detachable pendant/brooch, fitted in original case  
 '07 replacement \$25,800  
 \$8,000 - \$12,000
- 202**  
**14ct Antique Style Diamond Bracelet**  
 central cluster on hinged linked strap all set with native/old mine cut diamonds approx 6.35cts tdw  
 '20 replacement \$14,000  
 \$2,500 - \$3,500
- 203**  
**Edwardian 9ct Diamond Circular Target Brooch** open floral stylised design set with 24 rose cut diamonds  
 '07 replacement \$3,960  
 \$800 - \$1,200
- 204**  
**Early C19th Rolled Gold Emerald Locket**  
 ornate shield shape locket mounted with central octagonal step cut emerald with surround of 26 rose cut diamonds, locket all finely floral chased with acanthus leaf suspender supports on 9ct bow brooch  
 '15 replacement \$17,000  
 \$5,000 - \$7,000
- 205**  
**Art Deco 94stone Diamond Ladies Cocktail Wrist Watch** all pave set rectangular frame and cross-over design shoulder panels on 18ct white gold expanding strap, in original boxed for W G Dickinsons & Sons, Bath  
 \$1,200 - \$1,500
- 206**  
**Universal All 14ct White Gold Ladies Diamond Cocktail Wrist Watch** plain circular dial with diamond surround on fancy individual set diamond shoulders, round brilliant and baguette cuts approx 1.93cts tdw  
 '20 Replacement \$5,290  
 \$1,500 - \$1,800
- 207**  
**Kent Platinum & Diamond Case Ladies Cocktail Wrist Watch** rectangular dial with 16 diamonds set to the shoulders on stainless steel expanding strap, dated 1934  
 \$800 - \$1,200
- 208**  
**All 18ct Wittnauer Ladies Cocktail Wrist Watch** manual wind circular dial with four shoulder diamonds on bracelet strap, fitted in original box  
 \$500 - \$800
- 209**  
**Early C20th 14ct 61stone Emerald & Diamond Necklace** simple circle link design of claw set emeralds and rub-over old European cut diamonds approx 4.20cts tew and 3.57cts tdw  
 '20 replacement \$11,500  
 \$3,000 - \$4,500
- 210**  
**Victorian 15ct Necklet** central floret ribbon bow cluster with leaf supports all pave set with seed and half pearls and turquoise on rope twist chain fitted in original box  
 '07 replacement \$2,600  
 \$1,200 - \$1,500
- 211**  
**Victorian 18ct Floral Stem Spray Brooch**  
 finely worked leaves with single bud of synthetic ruby, flower head of eight old cut diamonds surrounding synthetic emerald, with necklace clasp fitting  
 07 replacement \$6,800  
 \$1,000 - \$1,400
- 212**  
**Colonial C1886 NZ 9ct Single Citrine Hinged Snap Bangle** large oval mixed cut citrine on triple rail bangle marked Rein, for Neils Jacob Martin Rein, Watchmaker, Dee Street, Invercargill  
 \$1,500 - \$1,800
- 213**  
**Colonial NZ 9ct Single Amethyst Hinged Snap Bangle** large round mixed cut amethyst claw set on fancy shoulders, rail bangle, marked G (George) Munro (two claws need attention)  
 \$1,500 - \$1,800
- 214**  
**Colonial NZ 15ct Single Amethyst Brooch**  
 large oval mixed cut amethyst claw set on wide framed set with half pearls marked G (George) Munro of Invercargill  
 \$1,500 - \$1,800
- 215**  
**Colonial 15ct Miners Brooch** shovel with suspended gold nugget marked JT  
 \$1,000 - \$1,400
- 216**  
**Colonial 9ct Greenstone Bar Brooch** gold mounts as an axe, fitted in box  
 \$140 - \$300
- 217**  
**Colonial (Australian) 15ct Double Bar Brooch** mounted with bug, set with imitation sapphire body (missing to pearls to the wings)  
 \$300 - \$500
- 217a**  
**Early C20th Southern Cross 'ANZAC' Brooch** set with five turquoise maker W L & S  
 \$260 - \$400
- 218**  
**Edwardian 9ct Scroll Pendant** with four aquamarine and half pearls set to the leaves, long drop swing pendant fitted in Stewart Dawson Ltd NZ box  
 \$180 - \$400
- 219**  
**Edwardian 9ct Shaped Lozenge Bar Brooch** set with garnet and two pearls fitted in Stewart Dawson Ltd, London box  
 \$100 - \$250
- 220**  
**Possible Colonial Silver Double Wild Snap Bangle** half engraved with leaf pattern  
 \$100 - \$260
- 221**  
**Large Victorian 9ct Framed Cameo Brooch**  
 classical beauty with bound curly tresses, cameo measures 5.1 x 4cm fitted in original box  
 \$800 - \$1,200
- 222**  
**Victorian 9ct Framed Classical Portrait Cameo Brooch**  
 \$100 - \$200
- 223**  
**Victorian Six Strand Red Coral Bracelet**  
 natural branch corals on silver mounted mythological cameo clasp (re-strung)  
 \$800 - \$1,000





- 224**  
**Victorian 18ct Three Coral Brooch** three large pink coral beads encased in fine ropes with 'ball' terminals  
\$200 - \$400
- 225**  
**Boxed Victorian 15ct Fancy Target Brooch** shaped oval with central panel of half pearls and single ruby with photo panel reverse  
'20 replacement \$1,850  
\$600 - \$800
- 226**  
**Victorian 15ct Target Brooch** ornate lozenge form with central cluster of ten rhodolite garnets with pendant drop fitted in original box (faults)  
\$800 - \$1,000
- 227**  
**Boxed Victorian 15ct Fancy Target Brooch** circular with buckle design set with seven dark pink tourmalines, all with fine chased and applied wire work  
'20 replacement \$1,100  
\$500 - \$800
- 228**  
**Victorian 15ct Five Stone Gem 'Regard' Target Brooch** finely worked filigree lozenge shape with central bridge of mixed gems, two emeralds, ruby, garnet and four half pearls to the rims  
\$500 - \$800
- 229**  
**Victorian Pearl Necklace** graduating crescent spray links with pendant earrings and crescent leaf spray brooch fitted in original box (faults)  
\$600 - \$1,000
- 230**  
**Victorian Anglo Indian Tortoise Shell & Silver Suite** military regimental 'Sweetheart' necklace, two bracelets and earrings  
\$600 - \$1,000
- 231**  
**Victorian Set Three 9ct Gem Set Collar Pins** fitted in original box  
\$100 - \$200
- 232**  
**Late Victorian 18ct Ruby & Diamond Cluster Ring** circular panel pave set with cross and rim of rubies, groups of four old mine cut diamonds  
\$1,200 - \$1,400
- 233**  
**18ct Solitaire Diamond Band** gypsy set old mine cut approx 0.24cts  
'20 replacement \$4,250  
\$800 - \$1,200
- 234**  
**18ct Solitaire Diamond Band** gypsy set old European cut approx 0.54cts  
'20 replacement \$4,900  
\$1,000 - \$1,200
- 235**  
**All Platinum Solitaire Diamond Ring** central raised claw round brilliant cut diamond approx 0.35cts with fancy pierced gallery and shoulder set with six single cuts  
'20 replacement \$3,000  
\$1,000 - \$1,200
- 236**  
**All Platinum Nine Stone Sapphire & Diamond Ring** central oval dark blue sapphire with baguette and round cut diamonds  
'19 replacement \$2,800  
\$1,000 - \$1,200
- 237**  
**All Platinum Eleven Stone Sapphire & Diamond Cluster Ring** central oval dark blue sapphire with surround of round brilliant cuts  
'19 replacement \$3,200  
\$1,000 - \$1,200
- 238**  
**18ct 32stone Sapphire & Diamond Square Cluster Ring** central four pave set square cut sapphires with double pave set surround of diamonds  
'20 replacement \$2,900  
\$1,000 - \$1,200
- 239**  
**14ct White Gold Sapphire & Diamond Pear Shape Cluster Ring** central pear mixed cut Ceylonese sapphire approx 5.25cts with two tiered surround of 16 brilliant cut diamonds approx 2.50cts tdw  
'20 replacement \$28,000  
\$8,000 - \$10,000
- 240**  
**18ct White Gold Sapphire & Diamond Cluster Ring** central oval mixed cut Ceylonese sapphire approx 1.70cts with individual set diamond surround and outer bands flanking baguette cut shoulders approx 1.75cts tdw  
'20 replacement \$14,400  
\$5,000 - \$6,000
- 241**  
**18ct 15stone Sapphire & Diamond Cluster Ring** rub-over set oval mixed cut dark blue sapphire approx 2.50cts with pave set rose cut diamond surround approx 0.50cts tdw  
'20 replacement \$6,900  
\$1,200 - \$1,600
- 242**  
**14ct 33stone Topaz & Diamond Cluster Ring** oval mixed cut topaz approx 7cts with fancy surround of baguette and round cut diamonds approx 1.54cts tdw  
'20 replacement \$8,500  
\$2,500 - \$3,000
- 243**  
**14ct Rose Gold Nine Stone Kunzite & Diamond Dress Ring** octagonal cut light pink kunzite approx 14.75cts with box set surround of diamonds on raised gallery setting  
'20 replacement \$6,900  
\$1,500 - \$2,000
- 244**  
**Pair 18ct Diamond Five Petal Flower Head Earrings** each bead set with 65 1.1mm diamonds and six round brilliant cuts, approx 1cts tdw, pierced backs  
'20 replacement \$5,500  
\$1,600 - \$1,800
- 245**  
**Pair 14ct Diamond Earrings** each leaf design earring set with 29 diamonds, screw backs, approx 1.20cts tdw  
'20 replacement \$7,500  
\$2,000 - \$2,500
- 246**  
**Pair 18ct White Gold Diamond Pendant Drop Earrings** each of five hinged diamond panels set with four princess cut diamonds approx 1.42cts tdw, pierced backs  
'20 replacement \$7,000  
\$2,000 - \$2,500
- 247**  
**14ct White Gold Aquamarine & Diamond Stud Earrings** each of heart mixed cut aquamarine with surround of 13 brilliant cut diamonds, pierced backs  
'20 replacement \$2,500  
\$600 - \$800
- 248**  
**18ct White Gold 38stone Sapphire & Diamond Pendant** oval mixed cut sapphire approx 2.35ts with diamond pave set surround and suspender  
'20 replacement \$4,500  
\$1,500 - \$1,800
- 249**  
**14ct Opal & Diamond Dress Ring** free form cut intense grey opal approx 6.35cts with surround of 43 round brilliant cut diamonds approx 0.43cts tdw  
'20 Australian Gemmological Valuation Available on Request  
\$2,500 - \$3,000



203



214



228



225



221



226



212



213



215



217



216



206

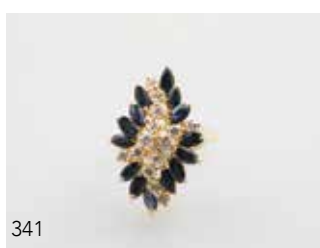


207



208







150



152



153



154



155



171



252



253



195



196



197



232



238



233



234



304



291



292



294



295



296



297



298



235



345



346



347



348



**248**  
**14ct Mintable Opal & Diamond Pendant**  
 free form cut fiery milk opal approx 7.80cts with pin and bell cap pave set with 132 round brilliant cut diamonds 0.63cts tdw  
 '20 Australian Gemmological Valuation  
 Available on Request  
 \$2,200 - \$2,600

**250**  
**Pair 18ct White Gold Diamond Cluster Stud Earrings** each of central baguette cut with pave surround of 12 brilliant round cuts approx 0.64cts tdw pierced  
 '20 retail \$3,900  
 \$1,800 - \$2,000

**251**  
**14ct White Gold Lightning Ridge Black Opal & Diamond Pendant** free form cut opal approx 4.10cts, with head of three round brilliant cut diamonds  
 '20 Australian Gemmological Valuation  
 Available on Request  
 \$1,800 - \$2,200

**252**  
**18ct Solitaire Diamond Ring** raised four claw set round brilliant cut approx 0.70cts  
 '16 Insurance \$8,600  
 \$3,000 - \$4,000

**253**  
**All Platinum Solitaire Diamond Ring**  
 modern four corner claw set princess cut diamond approx 0.50cts  
 '08 replacement \$8,360  
 \$2,400 - \$2,800

**255**  
**Pair 18ct White Gold Diamond Cluster Stud Earrings** each of central baguette cut with pave surround of 12 brilliant round cuts approx 0.64cts tdw pierced  
 '20 retail \$3,900  
 \$1,800 - \$2,000

**256**  
**18ct 104stone Green Garnet & Diamond Fancy Band Ring** Tsavorite garnets all pave set on domed band  
 '16 retail \$3,000  
 \$1,200 - \$1,500

**257**  
**18ct 104stone Pink Sapphire & Diamond Fancy Band Ring** all pave set domed band  
 '16 retail \$3,000  
 \$1,200 - \$1,500

**258**  
**9ct 73stone Garnet & Diamond Dress Ring**  
 central rectangular garnet with eight shoulder round cut garnets all banded with pave set diamonds  
 \$1,000 - \$1,200

**259**  
**18ct White Gold Pink Tourmaline & Diamond Cluster Dress Ring** central four claw set oval mixed cut tourmaline approx 4.50cts of band of all pave set baguette and round brilliant cut diamond approx 2.42cts tdw  
 '20 replacement \$14,000  
 \$4,000 - \$5,000

**260**  
**14ct 57stone Pink Sapphire & Diamond Cluster Ring** central oval pink sapphire approx 1.75cts with double fancy surround of diamond brilliant and baguette cuts approx 1cts tdw  
 '20 replacement \$7,200  
 \$1,200 - \$1,500

**261**  
**18ct Modern Fancy Diamond Cluster Ring**  
 raised four claw set light yellow cushion cut diamond approx 0.81cts with double tier surround and shoulders of single cut diamonds  
 '20 replacement \$12,000  
 \$3,500 - \$4,500

**262**  
**18ct 21stone Diamond Cluster Ring** tiered diamond shape cluster on fancy grooved double shank, round brilliant cuts approx 1.20cts tdw  
 '20 replacement \$7,500  
 \$2,000 - \$2,500

**263**  
**14ct White Gold 169stone Pink Sapphire & Diamond Heart Pendant** double heart pierced design all pave set with gems  
 '20 replacement \$4,700  
 \$1,400 - \$1,600

**264**  
**18ct White Gold 13stone Diamond Cross Pendant** channel set approx 0.50cts tdw  
 '20 replacement \$5,600  
 \$1,200 - \$1,400



167



168



169



170



186



187



188



269



268



270



311



312





**265**  
**14ct White Gold 27stone Diamond Cross Pendant** pave set with round brilliant and baguette cut diamonds approx 0.75cts tdw  
 '20 replacement \$4,500  
 \$1,000 - \$1,200

**266**  
**14ct Nine Stone Diamond Necklet** raised claw set brilliant cut diamonds approx 0.75cts tdw on 18ct fine neck chain  
 '20 replacement \$3,100  
 \$1,000 - \$1,200

**267**  
**14ct 19stone Diamond Necklet** articulated and graduated scallop sections each set with single diamond approx 0.75cts  
 '20 replacement \$5,500  
 \$1,500 - \$1,800

**268**  
**14ct White Gold 13stone Diamond Bracelet** design of rail link with double collar framing single round brilliant cut diamond approx 0.65cts tdw  
 '20 replacement \$6,800  
 \$2,000 - \$2,500

**269**  
**14ct 49stone Diamond Tennis Bracelet** each articulated link set with single round brilliant cut diamond approx 2cts tdw  
 '20 replacement 5,500  
 \$1,500 - \$2,000

**270**  
**18ct MOP & Diamond Hinged Snap Bracelet** the head of seven shaped MOP panels all surrounded with pave set diamonds approx 0.80cts tdw  
 '20 replacement \$13,000  
 \$4,500 - \$5,500

**271**  
**18ct White Gold 19stone Black Opal & Diamond Pendant** pear cabochon approx 1.70cts with surround of individual claw. set brilliant cut diamonds, on 9ct white gold neck chain  
 '20 replacement \$6,500  
 \$1,800 - \$2,200

**272**  
**Uniform Double Strand Cultured Pearl Necklace** 49 and 54 7mm pearls on 14ct fancy spray clasp set with turquoise and rubies 43cm length  
 \$700 - \$1,000

**273**  
**Single Strand Uniform Black Cultured Pearl Necklace** 41 9mm slightly off circular pearls on 14ct filigree clasp 43cm length  
 \$400 - \$800

**274**  
**Single Strand Uniform Cultured Pearl Necklace** 56 7mm pearls on s/s clasp 46cm length  
 \$200 - \$400

**275**  
**Single Strand Uniform Semi- Baroque Cultured Pearl Necklace** 47 9mm pearls on s/s clasp 44cm length (restringing needed)  
 \$200 - \$400

**276**  
**Single Strand Semi-Baroque Uniform Cultured Pearl Necklace** 7mm with S/S ribbed barrel clasp 82cm length  
 \$200 - \$400

**277**  
**Double Strand Cultured Pearl & Lapis Lazuli Bead Necklace** semi-baroque pearls interspaced with lapis beads 58cm longest length  
 \$200 - \$400

**278**  
**Boxed Mikimoto 14ct Three Pearl Spray Brooch** with 9ct three pearl bar brooch  
 \$100 - \$200

**279**  
**18ct Single Mabe Pearl Ring** natural elongated pear shape, double scroll claw set  
 \$300 - \$500

**280**  
**Natural Amber Necklace** 18 rounded nuggets on black velvet ribbon with single nugget catch 64cm overall length  
 \$2,500 - \$3,000

**281**  
**Modern Thread Natural Amber & Coral Necklace** eleven varying amber nuggets interspaced with bamboo coral beads 65cm length  
 \$1,000 - \$1,400

**282**  
**18ct Single Amethyst & Diamond Dress Ring** large emerald cut amethyst with ten round brilliant cut side diamonds on raised cage gallery  
 '20 replacement \$6,150  
 \$1,800 - \$2,400

**283**  
**9ct 28stone Amethyst & Diamond Dress Ring** eight pear mixed cut amethysts interspaced with diamond panels each set with single cut diamonds  
 \$1,000 - \$1,200

**284**  
**9ct Three Stone Amethyst Pendant** round brilliant cut approx 5.95cts, pear shape brilliant cut approx 3.01cts and ending with round amethyst drop on mixed curb link chain  
 '20 replacement \$2,880  
 \$800 - \$1,000

**285**  
**Pair 14ct Amethyst Pendant Earrings** each of single rectangular step cut amethyst suspended on pierced fan design head, clip backs  
 \$200 - \$400

**286**  
**9ct Single Amethyst Brooch** oval mixed cut gem on wide platform mount with scallop rim  
 \$160 - \$360

**287**  
**Edwardian 9ct Amethyst & Pearl Pendant/Brooch** central pear cut amethyst with surround of pave set seed pearls with outer frame of eight amethyst and half pearls  
 \$500 - \$800



- 228**  
**9ct Single Imitation Alexandrite Dress Ring** four claw set round mixed cut gem on rope twist bound shoulders  
\$160 - \$360
- 229**  
**18ct Four Stone Amethyst Pendant** pear shape mixed cut amethysts  
\$160 - \$260
- 229**  
**.925 Silver Amethyst Pendant** pear shaped mixed cut gem approx 20cts on modern omega necklet together with pair S/S amethyst crystal stud earrings  
\$100 - \$200
- 291**  
**18ct Solitaire Diamond Ring** crown claw set round brilliant cut approx 0.50cts  
\$1,000 - \$1,400
- 292**  
**18ct & Platinum Solitaire Diamond Ring** modern six claw set round brilliant cut approx 0.37cts  
'00 replacement \$3,900  
\$1,200 - \$1,500
- 293**  
**18ct Wedding Band** central white gold band engraved pattern  
\$200 - \$350
- 294**  
**18ct 72stone Diamond Band Ring** four rows pave set round brilliant cuts  
\$700 - \$1,000
- 295**  
**18ct Modern Design Diamond Eternity Band** all pave set 15 baguette cut diamonds with surround of 26 round brilliant cut diamonds approx 0.72cts tdw  
'18 RMV \$3,400  
\$1,000 - \$1,200
- 296**  
**18ct White Gold Modern 13stone Diamond Bridge Ring** raised bead claw set baguette and round brilliant cuts approx 0.62cts tdw  
'18 RMV \$3,500  
\$1,000 - \$1,200
- 297**  
**18ct White Gold Three Stone Diamond Bridge Ring** modern claw set princess cut diamonds approx 0.51cts tdw  
'20 replacement \$3,000  
\$1,000 - \$1,200
- 298**  
**18ct White Gold Twelve Stone Diamond Ring** raised four claw set four princess cut diamonds with channel set shoulders approx 1cts tdw  
'20 replacement \$4,600  
\$1,200 - \$1,600
- 299**  
**18ct Solitaire Diamond Ring** raised six claw set round brilliant cut approx 0.50cts  
'20 market \$1,559  
\$500 - \$800
- 300**  
**9ct Seven Stone Green Sapphire & Diamond Ring** central oval bright green sapphire, round brilliant cut shoulder diamonds  
'19 replacement \$2,999  
\$700 - \$1,000
- 301**  
**Pair 14ct White Gold Diamond Stud Earrings** each of stepped framed single princess cut diamond approx 0.34cts, 0.32cts, pierced  
'20 market \$1,557  
\$500 - \$800
- 302**  
**14ct White Gold Green Quartz & Diamond Dress Ring** raised four claw set octagonal cut green quartz with scrolling leaf ribbon gallery set with eight single cut diamonds, together with matching stud earrings, pierced backs with clips  
'20 replacement \$5,990  
\$1,400 - \$1,800
- 303**  
**14ct White Gold 19stone Diamond Cluster Ring** central round brilliant cut diamond approx 0.30cts box set with fancy pierced pave set diamond surround approx 0.70cts tdw  
'20 replacement \$3,400  
\$1,000 - \$1,200
- 304**  
**18ct Solitaire Diamond Ring** modern raised four corner claw set princess cut approx 0.34cts  
'11 retail \$2,800  
\$800 - \$1,000
- 305**  
**18ct White Gold 21stone Diamond Pendant** three floral seven stone floret clusters on fine gold trace link chain  
'15 replacement 1,950 pounds sterling  
\$1,200 - \$1,500
- 306**  
**14ct 19stone Diamond Pendant Necklace** claw set cluster on scroll supports set with four diamonds on modern snake link chain  
'20 replacement \$5,600  
\$1,200 - \$1,500
- 307**  
**14ct White Gold 19stone Ruby & Diamond Heart Pendant** single oval dark red ruby off-set on open heart set with round brilliant cuts approx 0.55cts tdw  
'20 replacement \$6,000  
\$1,500 - \$1,800
- 308**  
**18ct Solitaire Diamond Pendant** four claw set round brilliant cut approx 0.50cts on suspender set with three diamonds  
'20 market \$1,575  
\$600 - \$800
- 309**  
**14ct Three Stone Diamond Pendant** articulated bar crown claw set brilliant cuts approx 0.50cts tdw on 9ct fine link chain  
'20 replacement \$2,150  
\$800 - \$1,000

- 310**  
**14ct Nine Stone Diamond Star Cluster Pendant** central round brilliant cut diamond with surround of baguette cuts approx 0.68cts tdw, s/s chain  
 '20 replacement \$3,600  
 \$1,400 - \$1,800
- 311**  
**9ct 33stone Diamond Hinged Bangle** channel set round brilliant cuts approx 1cts tdw  
 '20 market \$2070  
 \$800 - \$1,000
- 312**  
**18ct Single Synthetic Emerald Ring** central oval emerald on fancy double twist shoulders  
 '20 replacement \$2,850  
 together with similar design 9ct five stone synthetic emerald hinged snap bangle, oval emeralds interspaced with two single cut diamonds, eight total  
 \$800 - \$1,200
- 313**  
**18ct Fancy Bracelet** five pierced roundel panels  
 \$1,000 - \$1,500
- 314**  
**9ct Double Mixed Curb Link Bracelet** heart padlock clasp  
 \$450 - \$700
- 315**  
**9ct 15stone Garnet & Half Pearl Bracelet** eight fancy double scroll hinged panels  
 \$400 - \$500
- 316**  
**9ct Five Multi-Gem Set Fancy Bracelet** fine double rail link set with amethyst, peridot, topaz, garnet and citrine, together with double band ring set with gems matching bracelet  
 \$300 - \$500
- 317**  
**15ct Rail Link Albert Chain** 47cm length  
 \$2,000 - \$2,400
- 318**  
**9ct Uniform Curb Link Albert Chain** 40cm length  
 \$800 - \$1,000
- 318a**  
**Heavy 9ct Uniform Curb Link Albert Chain**  
 \$1,200 - \$1,500
- 319**  
**Victorian 9ct Trace Link Muff Chain** 103cm length  
 \$400 - \$600
- 320**  
**9ct Double Flattened Curb Link Neck Chain** 50cm length  
 \$400 - \$600
- 321**  
**9ct Rope Twist Link Neck Chain and Matching Bracelet** intertwined with white gold box link 56cm neck chain length, 19cm bracelet (faults)  
 \$700 - \$1,000
- 322**  
**Vintage Lanco 9ct Ladies Dress Wrist Watch** manual wind square dial on heavy half dome link bracelet strap  
 \$800 - \$1,200
- 323**  
**18ct Open Face Lever Wind Pocket Watch** 3/4 plate Am Watch Co, Washington Waltham, Mass. plain white enamel dial with seconds movement  
 \$900 - \$1,400
- 324**  
**Longines La Grande Classique L4 635.2 Gents Wrist Watch** quartz movement gold plated stainless steel, bracelet strap  
 \$400 - \$600
- 325**  
**C1970 Longines 'Admiral' Gents Gold Plated Wristwatch** S/N17108406 circular brushed gilt dial with hour batons, sweep seconds and date aperture on mesh bracelet strap  
 \$400 - \$800
- 326**  
**Longines Classic Date L4 636.2 Gents Wrist Watch** quartz gold plated stainless steel on leather strap  
 \$200 - \$400
- 327**  
**Longines Classic Gents Wrist Watch** quartz gold plated stainless steel on leather strap  
 \$100 - \$200
- 328**  
**Longines L3 117 4 Ladies Oposition Wrist Watch** quartz all stainless steel on integral bracelet strap  
 \$200 - \$400
- 329**  
**Tag Heuer WA1214 Professional Wrist Watch** quartz all stainless with integral bracelet strap  
 \$100 - \$200
- 330**  
**Vintage Velona Automatic Gents Wrist Watch** gold plate stainless steel with textured silvered dial, sweep second hand on leather strap  
 \$100 - \$200
- 331**  
**C1950 Cyma Navy Star Gents Wrist Watch** manual wind silver dial with second sweep hand on leather strap  
 \$100 - \$200
- 332**  
**Vintage Cyma 18ct Cased Gents Wrist Watch** manual wind circular silvered dial with seconds movement on leather strap  
 \$200 - \$400
- 333**  
**Must de Cartier Tank Argent 925 Vermeil Ladies Wrist Watch** on Cartier black leather strap (battery replaced July 2019)  
 \$800 - \$1,200
- 334**  
**9ct Open Face Lever Wind Pocket Watch** plain white enamel dial with seconds movement on graduated 9ct curb link Albert chain, 35cm length  
 \$800 - \$1,400
- 334a**  
**Silver Cased Small Open Face Key Wind Pocket Watch** plain white dial with floral engraved back cover  
 \$100 - \$200
- 335**  
**Vintage 9ct Ladies Rolex Manual Wind Wrist Watch** plain circular case with silvered dial on 9ct expanding bracelet strap  
 \$400 - \$600
- 336**  
**14ct White Gold 66stone Fancy Diamond Band** 33 fancy light-brown, 33 white diamonds, six wavy band pave set design  
 '20 replacement \$4,300  
 \$800 - \$1,000
- 337**  
**10ct Diamond Half Hoop Earrings** each of four rows pave set with 48 round brilliant cut diamonds approx 2cts tdw, pierced backs  
 '20 replacement \$4,000  
 \$1,000 - \$1,200
- 338**  
**14ct White Gold Diamond Fancy Earrings** each interlocking ribbon design pave set with 40 single cut diamonds approx 0.50cts tdw pierced backs  
 '20 replacement \$2,300  
 \$800 - \$1,000
- 339**  
**9ct White Gold 35stone Diamond Band Ring** three bands channel and millegrain set round brilliant cut diamonds approx 0.42cts tdw  
 '20 Replacement \$2,099  
 \$500 - \$800



190



191



192



193



313



322



189 (detail)



317



318a



189



334



323



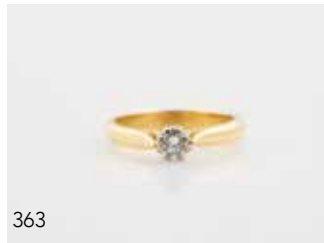
265



264



- 340**  
**10ct White Gold 83stone Diamond Fancy Dress Ring** marquise shape banded design all pave set with round brilliant and baguette cut diamonds approx 0.75cts tdw  
 '20 replacement \$3,600  
 \$800 - \$1,000
- 341**  
**14ct 28stone Sapphire & Diamond Princess Type Cluster Ring** central trail of round brilliant diamonds, edged with marquise cut sapphires  
 '19 replacement \$4,300  
 \$800 - \$1,200
- 342**  
**18ct 18stone Sapphire & Diamond Cluster Ring** modern floret design with baguette side ribbon band (two diamonds chipped)  
 '20 replacement \$3,400  
 \$800 - \$1,000
- 343**  
**18ct White Gold 23stone Sapphire, Tanzanite & Diamond Dress Ring** central dark blue rectangular sapphire with surround pave set diamond, four trilliant cut tanzanite shoulders  
 '20 replacement \$3,950  
 \$1,200 - \$1,500
- 344**  
**18ct White Gold Sphe (Titanite) Pink Tourmaline & Diamond Cluster Ring** central oval green sphene with surround of 18 diamonds, 16 pink tourmaline pave set to the cross-over shoulders  
 '20 replacement \$3,590  
 \$1,200 - \$1,500
- 345**  
**18ct Three Stone Sapphire & Diamond Bridge Ring** raised claw set central round brilliant cut diamond approx 0.38cts with sapphires approx 0.50cts tsw  
 '20 replacement \$3,750  
 \$1,000 - \$1,200
- 346**  
**18ct and Platinum Solitaire Diamond Ring** crown claw round brilliant cut approx 0.34cts  
 '19 replacement \$3,700  
 \$1,000 - \$1,200
- 347**  
**14ct Solitaire Diamond Ring** raised box set round brilliant cut approx 0.25cts  
 '20 replacement \$4,200  
 \$800 - \$1,200
- 348**  
**18ct Three Stone Diamond Ring** claw set on cross-over shoulders round brilliant cuts approx 0.55cts tdw  
 '19 replacement \$3,600  
 \$1,000 - \$1,200
- 349**  
**18ct 17stone Diamond Floret Cluster Ring** modern design central cluster with six pave set shoulder diamonds, round brilliant cuts approx 0.35cts tdw  
 '20 replacement \$2,500  
 \$600 - \$800
- 350**  
**14ct 15stone Ruby & Diamond Ring** three central bright rubies with raised claw set diamond surround  
 '20 replacement \$2,700  
 \$800 - \$1,000
- 351**  
**18ct Ruby & Diamond Stud Earrings** each set with single oval ruby flanked by four individual set diamonds, p[ierced backs  
 '20 replacement \$3,500  
 \$800 - \$1,000
- 352**  
**18ct White Gold Diamond Spray Earrings** each spray of six diamonds on solitaire diamond stud, approx 1.07cts tdw, pierced backs  
 '20 replacement \$6,000  
 \$1,800 - \$2,200
- 353**  
**14ct Solitaire Diamond Ring** raised six claw set round brilliant cut approx 0.25cts with cross-over shoulders set with ten diamonds  
 '20 replacement \$2,300  
 \$600 - \$800
- 354**  
**18ct White Gold 17stone Emerald & Diamond Cluster Ring** central rectangular emerald with double frame individual set diamonds approx 0.75cts tdw  
 '20 replacement \$6,200  
 \$1,500 - \$2,000
- 355**  
**18ct White Gold Solitaire Diamond Ring** round brilliant cut with cross-over shoulder design channel set with six diamonds, matching interlocking wedding band  
 '20 replacement \$5,390  
 \$800 - \$1,200
- 356**  
**18ct Three Stone Diamond Bridge Ring** round brilliant cuts approx 1cts tdw  
 '20 replacement \$5,500  
 \$1,200 - \$1,400
- 357**  
**18ct White Gold Eight Stone Diamond Band** gypsy set round brilliant cuts approx 0.34cts tdw  
 '17 NRV \$3,050  
 \$800 - \$1,000
- 358**  
**14ct White Gold Solitaire Diamond Ring** raised five claw set heart cut brilliant diamond approx 0.40cts  
 '19 replacement \$2,200  
 \$800 - \$1,000
- 359**  
**14ct White Gold Solitaire Diamond Ring** raised three claw set heart cut brilliant diamond approx 0.35cts  
 '19 replacement \$2,000  
 \$800 - \$1,000
- 360**  
**Tiffany & Co All Platinum Solitaire Diamond Ring** four corner claw emerald cut diamond approx 0.33cts  
 '20 NRV \$5,900  
 \$1,700 - \$1,800
- 361**  
**18ct Five Stone Diamond Bridge Ring** pierced claw set diamonds approx 0.25cts tdw  
 '20 replacement \$4,900  
 \$800 - \$1,200
- 362**  
**18ct Nine Stone Diamond Eternity Band** channel set round brilliant cut diamonds approx 0.45cts  
 '20 replacement \$2,490  
 \$500 - \$800
- 363**  
**18ct Solitaire Diamond Ring** raised crown claw set round brilliant cut approx 0.28cts  
 '20 replacement \$3,550  
 \$800 - \$1,000
- 364**  
**18ct Five Stone Diamond Band Ring** modern raised band box set with three square cut and two round brilliant cut diamonds  
 '20 replacement \$5,290  
 \$1,000 - \$1,400
- 365**  
**18ct Seven Stone Garnet & Yellow Sapphire Dress Ring** octagonal-shaped step cut rhodolite garnet approx 3.76cts flanked with shoulders of square shaped yellow sapphires  
 '20 market \$1,917  
 \$500 - \$800
- 366**  
**14ct 19stone Garnet Brooch** modern lozenge shape with rub-over cushion mixed cut rhodolite almandite garnets  
 '18 replacement \$4,130  
 \$800 - \$1,000
- 367**  
**Mid C20th 14ct Double Ribbon Scroll Brooch** set with three turquoise, all engraved and textured finish  
 \$200 - \$400



- 368**  
**18ct & 15ct 15stone Art Nouveau Style Bar Brooch** central oval mixed cut aquamarine approx 0.31cts with surround old European and single cut diamonds  
 '16 replacement \$2,980  
 \$800 - \$1,200
- 369**  
**Victorian 15ct Double Bar Brooch** cross bar set three sapphire and two diamonds  
 \$200 - \$400
- 370**  
**18ct Three Stone Sapphire & Diamond Curve Bar Brooch**  
 \$200 - \$400
- 371**  
**18ct White Gold Single Black Opal Triplet Bar Brooch** oval gem with fancy shoulders  
 \$160 - \$300
- 372**  
**Edwardian 13stone Pink Peridot Crescent Brooch** pierced gallery with 12 diamond chip spacers, Chester 1908  
 \$300 - \$500
- 373**  
**Victorian Onyx & Seed Pearl Brooch** deep rectangular onyx panel set with triple cluster of seed and half pearls, reverse hair panel and memorial dated 1883  
 \$250 - \$350
- 374**  
**Large Victorian Gold Plated Memorial Brooch** central hair panel with black enamel 'In Memory Of' with open scroll frame  
 \$200 - \$300
- 375**  
**Victorian 9ct Framed Classical Portrait Cameo Brooch** rub-over cameo with bold rail frame with ribbon crossed corners  
 \$400 - \$600
- 376**  
**Mid C20th 14ct Seven Panel Cameo Bracelet** differing female portraits  
 \$800 - \$1,000
- 377**  
**Victorian Tiny Carved Pink Coral Cameo Charm**  
 \$100 - \$200
- 378**  
**10ct Rose Gold Double Head Dragon Bar Brooch** each dragon holding synthetic ruby with synthetic emerald eyes  
 '20 replacement \$2,750  
 \$600 - \$800
- 379**  
**14ct Charm** of a Hawaiian Chief  
 \$160 - \$260
- 380**  
**9ct Five Stone Ruby & Diamond Chip Hinged Snap Bangle** zig-zag shaped panel gypsy set gems on double rail bangle  
 \$400 - \$600
- 381**  
**Edwardian 9ct Fancy Hinged Snap Bangle** head set with single gypsy set rose cut diamond flanked by two oval mixed cut sapphires (slight faults)  
 \$300 - \$600
- 382**  
**10ct Single Black Opal Bracelet** oval fiery blue/green opal with leaf framed on waisted rail hinged links together with 9ct single opal doublet ring  
 \$300 - \$500
- 383**  
**9ct Ruby and Star Sapphire Necklet** six cabochon star sapphires on support of 28 rubies on fine trace link chain  
 '04 replacement \$1,700  
 \$500 - \$800
- 384**  
**9ct and Silver Synthetic Spinel & Sapphire Cluster Pendant** central emerald step cut light blue synthetic spinel with surround of 18 white sapphires together with matching pendant earrings, pierced  
 '15 replacement \$2,130 pendant, \$2,980 earrings  
 \$800 - \$1,200
- 385**  
**Edwardian 9ct Imitation Ruby & Pearl Necklet** three rectangular step cut rubies on leaf scroll support all set with seed pearls on fine trace link chain  
 \$400 - \$600
- 386**  
**Late C19th Sterling Large Photo Locket Pendant** ornate cover decoration of floral cross on engraved diaper pattern  
 \$100 - \$200
- 387**  
**Victorian Memorial Silver Cross Pendant** central cairngorm gem on fancy chased white and black enamel cross with crown finials  
 \$160 - \$300
- 388**  
**Mid C20th Silver Blue & White Sapphire Tennis Style Bracelet** each hinged box link set with round and oval mixed cut pale blue sapphires interspaced with panels of four white brilliant cut sapphires  
 \$400 - \$800
- 389**  
**C2001 Tiffany & Co .925 Silver 1837 Cuff** 1837 the year Tiffany's was founded, 3cm width, in Tiffany box  
 \$600 - \$800
- 390**  
**Victorian French Jet Mourning Bracelet** central panel with high relief classical portrait on expanding wrythen ribbed panels  
 \$100 - \$200
- 391**  
**Victorian Single Strand Graduated Amber Bead Necklace** 80cm length  
 \$100 - \$200
- 392**  
**Vintage Chinese Single Strand Necklace** featuring carved mask beads with ceramic coral and trade beads 80cm length  
 \$160 - \$300
- 393**  
**Vintage Bead Necklace** single tread of carnelian, carved wooden, amber and ivory figured beads  
 \$160 - \$300
- 394**  
**18ct Five Stone Ruby Bridge Ring** scroll claw set round mixed cut deep red rubies  
 \$500 - \$800
- 395**  
**18ct Five Stone Ruby & Diamond Bridge Ring** modern rub-over set central oval ruby with side diamonds  
 '20 replacement \$2,600  
 \$600 - \$800
- 396**  
**18ct Seven Stone Ruby & Diamond Band** modern gypsy set  
 '20 replacement \$2,250  
 \$600 - \$800
- 397**  
**18ct 25stone Diamond Eternity Band** channel set diamonds approx 0.25cts tdw  
 '20 replacement \$1,675  
 \$400 - \$500
- 398**  
**Victorian 18ct Three Stone Diamond & Ruby Band** gypsy set  
 \$180 - \$300
- 399**  
**Victorian 18ct Five Stone Opal & Diamond Bridge Ring** scroll claw set  
 \$200 - \$400
- 400**  
**Victorian 18ct Five Stone Diamond Bridge Ring** scroll claw set old European cut diamonds  
 dated 1894, Birmingham  
 \$500 - \$800
- 401**  
**.9999 Fine Gold Ring** simple head design  
 \$300 - \$500

- 402**  
**Russian 825 (18ct) and Neillo Ring** plain oval panel with flower blossom  
\$300 - \$450
- 403**  
**9ct Celtic Knot Design Band Ring**  
'20 replacement \$1,000  
\$200 - \$300
- 404**  
**14ct 13stone Ruby & Diamond Cluster Ring** central oval ruby with two pear cut shoulder rubies with diamond surround  
'19 replacement \$1,500  
\$300 - \$400
- 405**  
**Pair 9ct Black Pearl Pendant Earrings** each of single pearl drop bar on single pearl spray head, pierced backs  
\$200 - \$400
- 406**  
**9ct Four Stone Ruby Bridge Ring** raised modern claw set marquise cut rubies interspaced with six diamonds  
\$300 - \$500
- 407**  
**14ct Three Stone Ruby Bridge Ring** oval mixed cut deep red rubies interspaced with diamond single cuts  
\$300 - \$500
- 408**  
**14ct Single Star Sapphire Dress Ring** oval cabochon sapphire on ribbed shoulders with textured finish  
\$400 - \$600
- 409**  
**18ct Five Stone Emerald and Diamond Band** part rub-over/ claw set  
'20 replacement \$3,500  
\$500 - \$800
- 410**  
**18ct & Platinum Solitaire Diamond Ring** six claw set round brilliant cuts approx 0.20cts  
'20 Replacement \$3,000  
\$500 - \$700
- 411**  
**18ct Three Stone Diamond Ring** rub-over round brilliant cut diamonds with cross-over shoulders  
\$400 - \$600
- 412**  
**18ct Solitaire Diamond Ring** raised six claw set on fancy shoulders  
'20 replacement \$2,690  
\$400 - \$600
- 413**  
**9ct Amethyst & Seed Peal Ring** roundel design  
\$100 - \$200
- 414**  
**US 10ct 1951 School Ring**  
\$100 - \$200
- 415**  
**9ct Gent Onyx Panel Signet Ring**  
\$200 - \$400
- 416**  
**14ct Plain Wedding Band**  
\$150 - \$250
- 417**  
**Two 18ct Plain Wedding Bands**  
\$400 - \$600
- 418**  
**18ct Wide Plain Wedding Band**  
\$200 - \$400
- 419**  
**Early C20th 15ct Single Amethyst Ring** oval cabochon amethyst claw set on wide plain band (gem need re-polishing)  
\$200 - \$400
- 420**  
**9ct Single Citrine Dress Ring** hexagonal mixed cut citrine on raised claw gallery  
\$300 - \$600
- 421**  
**Collection Victorian Gold and Plated Brooches** stick pins, heart clasps, unmounted gems (faults)  
\$200 - \$500
- 422**  
**Victorian Gold Plate French Jet Cross** jet bar brooch, pair MOP bead pendant drop earrings and coral thread (no clasp)  
\$100 - \$200
- 423**  
**Gilt Metal Cameo Necklace** Pendant, gold locket and heart  
\$100 - \$200
- 424**  
**18ct Framed Portrait Cameo Brooch/ Pendant**  
\$200 - \$300
- 425**  
**Victorian 15ct Half Pearl Star Burst Brooch** twist bar brooch set with single pearl and S/S mounted jade carved floral brooch  
\$100 - \$240
- 426**  
**18ct Wedding Band** together with 15ct signet ring, 9ct neck chain and Australian kangaroo brooch  
\$200 - \$400
- 427**  
**Two 18ct Wedding Bands** and 14ct band set with single diamond, 9ct band, horse shoe brooch and pendant, 14ct garnet cluster ring (faults)  
\$260 - \$400
- 428**  
**C1950 - 60's Sphinx (Butler & Wilson) Costume Flower Brooch** single stem set with sapphire and diamond paste central cluster with matching earrings (clip backs), purse powder compact, Rodd plated bracelet and two salt spoons  
\$160 - \$260



# RECENT FINE JEWELLERY HIGHLIGHTS

## CONSIGNMENTS INVITED



1



2



3



4



5



6



7



8



9



10



11



12



13



14



15



16



17



18



19



20

Illustrated: **1** 14ct White Gold Tanzanite & Diamond Necklace - \$27,750 **2** Bvlgari Bvlgari Divas Dream Style 18ct White Gold Diamond Emerald Necklace - \$7,300 **3** Pair 18ct White Gold & Diamond Pendant Earrings - \$3,800 **4** 18ct White Gold 19stone Sapphire & Diamond Cluster Ring - \$11,000 **5** All Platinum Three Stone Emerald & Diamond Ring - \$13,400 **6** All Platinum Five Stone Diamond Ring - \$22,700 **7** All Platinum 27stone Aquamarine & White Spinel Cluster Ring - \$5,100 **8** All Platinum 19stone Emerald & Diamond Cluster Ring - \$7,200 **9** Pair 14ct White Gold Sapphire & Diamond Pendant Earrings - \$9,400 **10** Victorian 18ct Essex Crystal Reverse Intaglio Brooch - \$6,600 **11** Pair 18ct & Platinum Diamond and Tanzanite Pendant Drop Earrings - \$9,600 **12** 18ct White Gold 173stone Diamond Pendant/Brooch - \$5,300 **13** German 14ct Lapis Lazuli Neck Chain - \$4,800 **14** Early C20th Grand Tour Italian Mosaic Necklace - \$2,000 **15** 18ct Tiki Pendant on Chain - \$5,700 **16** Rolex Ladies All 18ct Gold Wrist Watch - \$22,100 **17** 18ct Eleven Stone Emerald & Diamond Necklet with Matching Earrings - \$30,500 **18** Art Deco Platinum, Diamond & Sapphire Bracelet - \$10,860 **19** Victorian Grand Tour 18ct Mosaic Bracelet - \$7,840 **20** 18ct Mounted Five Sovereign Bracelet - \$7,700 \* Rounded to the nearest hundred and include buyers premium + GST



ENTRIES CURRENTLY INVITED

## New Zealand & International Fine Arts

March/April 2021

Enquiries

**Helena Walker**

+64 4 472 1367 / 0274 713 662

art@dunbarsloane.co.nz

**Dunbar M Sloane**

+64 9 377 5820 / 021 473 998

auckland@dunbarsloane.co.nz



ENTRIES CURRENTLY INVITED

## Antique & Decorative Arts

March/April 2021

Enquiries

**Anthony Gallagher**

+64 4 472 1367

0274 713 667

antiques@dunbarsloane.co.nz



ENTRIES CURRENTLY INVITED

## Fine & Estate Jewellery

March/April 2021

Enquiries

**Bettina Frith**

+64 4 472 1367

[jewellery@dunbarsloane.co.nz](mailto:jewellery@dunbarsloane.co.nz)

*Illus: 14ct Tanzanite & Diamond Necklace achieved \$27,750*



CATALOGUE IN PRODUCTION

## Affordable Jewellery

16 December 2020

Enquiries

**Bettina Frith**

+64 4 472 1367

[infos@dunbarsloane.co.nz](mailto:infos@dunbarsloane.co.nz)



# CONDITIONS OF SALE

## 1.

The highest Bidder is deemed to be the Buyer, and if during the Auction the Auctioneer considers that a dispute has arisen, the Lot in dispute shall be immediately put up again for sale.

## 2.

The Auctioneer has the right to refuse any bid and to advance the bidding at his absolute discretion.

## 3.

The Seller shall be entitled to place a reserve on any Lot and the Auctioneer shall have the right to bid on behalf of the Seller for any Lot on which a reserve has been placed.

Dunbar Sloane Ltd have the right to withdraw or divide any Lot or to combine any two or more Lots at their sole discretion.

## 4.

The Buyer shall forthwith upon the purchase give in his/her name and permanent address.

The Buyer may be required to pay down forthwith the whole or any part of the Purchase Money, and if he/she fails to do so, the Lot may at the Auctioneer's absolute discretion be put up again and resold.

The Buyer shall pay to Dunbar Sloane Ltd a premium of 18% on the hammer price together with GST at the standard rate on the premium, and agrees that Dunbar Sloane, when acting as agent for the Seller, may also receive commission from the Seller.

## 5.

Each Lot sold by the Seller thereof with all faults and defects therein and with all errors of description and is to be taken and paid for whether genuine and authentic or not and no compensation shall be paid for the same.

Dunbar Sloane Ltd act as agents only and neither they nor the Seller are responsible for any faults or defects in any Lot or the correctness of any statement as to the authorship, origin, date, age, attribution, genuineness, provenance or condition of any Lot.

All statements in the Catalogues, Advertisements or Brochures of forthcoming sales as to any of the matters specified in (b) above are statements of opinion, and are not to be relied upon as statements of representations of fact, and intending purchasers must satisfy themselves by inspection or otherwise as to all of the matters specified in (b) above, as to the physical description of any Lot, and as to whether or not any Lot has been repaired.

The Seller and Dunbar Sloane Ltd do not make or give, nor has any person in the employment of Dunbar Sloane Ltd any authority to make or give, any representation or warranty.

In any event neither the Seller nor Dunbar Sloane Ltd are responsible for any representation or warranty, or for any statement in the Catalogues, Advertisements or Brochures of forthcoming sales.

## 6.

Notwithstanding any other terms of these conditions, if within 7 days after the sale Dunbar Sloane Ltd have received from the Buyer of any Lot notice in writing that in his view the Lot is deliberate forgery and within 9 days after such notification, the Buyer returns the same to Dunbar Sloane Ltd in the same condition as at the time of sale and

satisfies Dunbar Sloane Ltd had considered in the light of the entry in the Catalogue the Lot is a deliberate forgery then the sale of the Lot will be rescinded and the purchase price of the same refunded.

## 7.

To prevent inaccuracy in delivery, and inconvenience in settlement of Purchase, no Lot can be taken away during the times of sale, nor can any Lot be taken away unless it has been paid for in full.

All lots are to be paid for and taken away at the Buyer's expense within two working days from the sale. Purchases, whilst in our care, will be insured for this period (subject to terms and conditions).

## 8.

On failure of a Buyer to take away and pay for any Lot in accordance with Condition 7, Dunbar Sloane Ltd reserves any other right or remedies.

To resell the Lot or cause it to be resold by public sale, any money paid in part payment being forfeited, any deficiency attending such resale after deducting all costs incurred in connection with the Lot to be made good by the defaulting Buyer, and any surplus to be the Seller's or: To store the Lot or cause it to be stored whether at their own premises or elsewhere at the sole expense of the Buyer, and to release the Lot only after payment in full of the purchase price together with interest there on of 5% above Bank minimum lending rate, the accrued cost of removal, storage and insurance (if any) and all other costs incurred in connection with the Lot.

If the Lot has been in store pursuant to (ii) for more than 6 months, to remove the Lot from store and to exercise the right set out in (i).

# ABSENTEE BIDDING FORM

94 Featherston Street, Wellington  
PO Box 224, Wellington 6140, New Zealand  
P +64 4 472 1367  
F +64 475 7389  
E info@dunbarsloane.co.nz

Type of Auction

Auction Date

Please bid on my behalf at the above sale for the following lots. These bids are to be executed as low as permitted by other bids or reserves. I agree to comply with the Conditions of Sale as printed in the Catalogue.

Full name

Address

Phone

Email

SIGNED \_\_\_\_\_

DATE \_\_\_\_\_

Lot Number	Title / Description (use block letters)	Maximum Bid Price (excluding premium)

## International Bidders

Are required to provide photographic proof of ID – passport or drivers licence together with proof of address – utility bill, bank or credit card statement etc. Failure to provide this will result in your bids not being processed. For higher value lots you may also be asked to provide a bank reference.

NOTE Individual bids registered by overseas bidders must be over \$500 in individual value.

## Please double check your bids and read terms below

Please submit your bid as early as possible. In the event of identical bids, the earliest will take precedence.

'Buy' bids are not accepted. The limit you leave should be the amount to which you would bid if you were to attend the Sale.

Buyers are reminded that there is a 18% buyer's premium on the hammer price plus GST on the premium. See conditions of sale.

# BUYERS GUIDE

If you have not bought from Dunbar Sloane before, please read the following notes. Staff will be pleased to answer any questions you may have.

## BEFORE AUCTION

The terms and conditions under which the buyer acts at a sale are detailed at the back of this catalogue. We recommend that you read and understand these conditions of business before registering to bid at an auction. This sale is subject to the conditions of business printed in this catalogue and to the reserves.

### Viewing

All lots are available for inspection prior to the sale. Although staff will endeavour to answer your enquiries, and give advice, the final decision to bid, is at your discretion and liability.

### Pre-Sale Estimates

The estimated prices printed below the catalogue descriptions are in New Zealand dollars and are the approximate prices expected to be realised, excluding buyers premium. They are not definitive, they are prepared well in advance of the sale and they are subject to revision.

### Condition Reports

Dunbar Sloane Ltd will provide a verbal condition report if you would like an opinion on any particular lot prior to purchasing. These must be requested at least 24 hours before the commencement of auction. All goods are sold "as is" and it is up to the buyer to satisfy themselves as to the condition of an item before the auction.

## THE AUCTION

### Buying at Auction

You are able to bid using the following four methods:

#### 1. Bidding in the Room

To bid at the auction you will need to register for a bidding number at the front desk either during the viewing or prior to the auction. Please bid clearly and promptly using your bidding number.

#### 2. Absentee Bidding

If you are unable to attend the auction, Dunbar Sloane Ltd can bid on your behalf according to your written instructions. This is a free service for intended buyers. Please complete clearly the form at the back of this catalogue and submit it to Dunbar Sloane Ltd at least 24 hours before the sale to ensure it is safely received. Lots will be purchased for you as reasonably as possible, subject to other bids in the room and to reserves.

#### 3. Telephone Bidding

If you are unable to attend the auction, you can elect to bid by telephone (subject to availability). Telephone bidding must be arranged with Dunbar Sloane Ltd prior to the sale and is subject to a minimum lot estimate of \$500 or greater. Please note that the auctioneer determines the increments in bidding, not the telephone bidder. We accept no responsibility if for whatever reason we are unable to contact you and as such recommend leaving a covering bid.

#### 4. Live Online Bidding

We offer live online bidding on our website: [www.dunbarsloane.co.nz](http://www.dunbarsloane.co.nz)

Registering online does not automatically register to bid, and further identification maybe required, especially if you are an International client.

### Selling Rate

Fine Art auctions are generally conducted at the rate of about 60 lots per hour. However, this can vary.

## AFTER THE AUCTION

### Payment

Payment for purchase is due in New Zealand dollars within 48 hours from the date of sale by cash, cheque, eftpos or electronic transfer. Bank details as follows:

**Dunbar Sloane Ltd**  
**06 0501 0524945 0**  
**Swift Code ANZBNZ22**

Please include details of sale date and lot numbers with all payments.

International clients will need to add an additional \$25NZD to cover bank transfer fees

### Collection of Purchases

Property purchased can be collected as soon as full payment has been received. Any items not collected within seven days of the auction may be subject to a storage and fee. Insurance (subject to terms and conditions) applies for up to two working days from the date of the sale whilst items are in our care.

Items must be paid for straight away and a second account for courier/freight charges will follow as soon as possible when we have confirmed courier charges.

### Packaging and Transportation

We advise buyers to arrange transport and insurance with their preferred provider/s. We accept no responsibility for loss or damage in transit. For smaller items able to be couriered, Dunbar Sloane Ltd can pack and courier for a fee. This is to be paid before the goods leave our premises. We pack with care, however we take no responsibility for damage once your goods leave our premises. It is up to the buyer to arrange insurance to cover any damage or loss in transit.

### BUYERS PREMIUM

**The buyer shall pay to Dunbar Sloane Ltd a premium of 18% of the hammer price plus GST on the premium only—effectively adding 20.70% to the hammer price.**