



ANTIQUÉ &  
DECORATIVE ARTS  
FINE JEWELLERY

**24 & 25 MARCH 2021**







# ANTIQUÉ & DECORATIVE ARTS FINE & ESTATE JEWELLERY

**Wednesday 24 March 2021**

SESSION ONE - PORCELAIN, ASIAN ARTS, WOODS & METALS, SILVER

Lot 1 - 300 • 11am start

SESSION TWO - FRAMED WORKS & PERIOD FURNISHING

Lot 301 - 465 • 5pm start

**Thursday 25 March 2021**

SESSION THREE - ESTATE & FINE JEWELLERY

Lot 500 - 788 • 4pm start

## LIVE BIDDING

Please note we now offer our own live online bidding service.

For instruction see our website: [www.dunbarsloane.co.nz](http://www.dunbarsloane.co.nz)  
Online registrations and absentee bids must be made at least 1 hour before the auction commences, or 24 hours if you are an International client. Phone bidding is limited and will be on a first registered basis, as such we encourage early registration for this service

### BUYERS PREMIUM

Each lot is subject to 18% + GST buyers premium

## VIEWING SCHEDULE

Friday 19th March 10am - 4pm

Sunday 21st March 12noon - 3pm

Monday 22nd March 9am - 4pm

Tuesday 23rd March 9am - 4pm

### ENQUIRIES

Jewellery: Bettina Frith

+64 4 472 1367 / [jewellery@dunbarsloane.co.nz](mailto:jewellery@dunbarsloane.co.nz)

Antiques: Anthony Gallagher

+64 274 713 667 / [antiques@dunbarsloane.co.nz](mailto:antiques@dunbarsloane.co.nz)

94 Featherston Street, Wellington CBD

PO Box 224, Wellington 6140

[www.dunbarsloane.com](http://www.dunbarsloane.com)





**SESSION ONE**

**PORCELAIN & POTTERY**

**ASIAN ARTS**

**WOODS & METALS**

**STERLING SILVER**

**Wednesday 24th March**

**11am start**

**Lot 1 - 300**

- 1**  
**Royal Copenhagen Figure** Girl & Goose, 18cm height  
\$80 - \$160
- 2**  
**Royal Copenhagen Figure** Young Peasant Boy & Girl 20.5 cm height  
\$80 - \$160
- 3**  
**Royal Copenhagen Figure** reclining boy with hat eating food from a pot, 19cm length  
\$80 - \$160
- 4**  
**Royal Copenhagen Figure** of a seated young boy whittling a stick, 19.5 cm height  
\$80 - \$160
- 5**  
**Royal Copenhagen Figure** Playful Pups together with a small advertising sign  
\$50 - \$100
- 6**  
**Rare Crown Devon M192 Spiders Web & Dragonfly Pattern Vase** ribbed spherical form with gilded ring handles, original paper label to base, 17cm height  
\$160 - \$280
- 7**  
**Carlton Ware Foxgloves Pattern Vase & Bowl** on a matt blue ground, of sizes  
\$100 - \$200
- 8**  
**Rare Carlton Ware Shabunkin River Fish Pattern Vase** ovoid shape, attributed to Violet Elmer, decorated with a fish swimming amongst pond reeds on a modulating light green ground, (hairline crack to the interior) factory stamp, 14.5cm height  
\$200 - \$500
- 9**  
**Carlton Ware Bleu Royale Pagoda Pattern Vase** baluster shape with twin gilt scroll handles and fluted lower section  
\$140 - \$220
- 10**  
**Early Carlton Ware Flo-Blue Vase** ovoid shape on 4 gilded scroll feet, 24.5cm height  
\$60 - \$120
- 11**  
**Newport Pottery Peter Pan Pattern Coffee Set** all with a band of dancing figures on an orange ground, possibly designed by Clarice Cliff, comprising coffee pot, six cans and saucers  
\$100 - \$240
- 12**  
**Rare Clarice Cliff Bizarre Ware May Avenue Vase** Bonjour shape, 12.5cm height, printed marks  
\$2,000 - \$3,000
- 13**  
**Clarice Cliff Bizarre Secrets Pattern Three Piece Teaset** Bonjour shape, comprising teapot, sugar bowl and milk jug, factory stamps to each piece  
\$800 - \$1,500
- 14**  
**Exceptionally Rare Clarice Cliff Bizarre May Avenue Pattern Coffee Set** tapering coffee pot, sugar bowl and cream jug, 6 saucers and 5 cylindrical coffee cans (one with rim chip, one base chip) c1933  
\$8,000 - \$12,000
- 15**  
**Clarice Cliff Bizarre Killarney Pattern Plate** ribbed plate with painted geometric design, 21.5cm dia.  
\$300 - \$500
- 16**  
**Clarice Cliff Fantasque Orange Trees & Houses Pattern Basket** of quatrefoil outline with original frog, 34cm height  
\$500 - \$800
- 16a**  
**Zsolnay Green Iridescent Polar Bears Figure Group** printed stamp, 20 cm width  
\$260 - \$400
- 17**  
**Royal Doulton "Kiwi" Pattern Part Teaset** comprising, teapot, hot water jug, two milk jugs, sugar bowl cup and saucer, three stamped John Bates & Co Ltd Dunedin Exhibition 1925-26 (lid repaired, some faults)  
\$300 - \$600
- 18**  
**Rare Royal Doulton Butterfly Girl** by Leslie Harradine HN719 modelled as a standing female figure wearing a butterfly cape, painted and printed marks and modellers initials, 17.5cm height  
\$500 - \$1,000
- 19**  
**Rare Royal Doulton Folly Figure** by Leslie Harradine HN1335 modelled as a Pierette figure carrying balloons and wearing a conical hat, with painted and printed marks, 22.5cm height  
\$500 - \$1,000
- 20**  
**Royal Doulton Figure Angela** by Leslie Harradine HN1204 modelled as a risqué female figure holding a fan behind her head, seated on a plinth, painted and printed marks, 19cm height  
\$500 - \$1,000
- 21**  
**Rare Royal Doulton "Jester" Figure** by Charles Noke, Model No HN45 depicted wearing a black and white checked jesters tunic, trousers and hat with jokers ball sitting on a plinth, painted, printed and impressed marks, 24cm height  
\$1,000 - \$2,000
- 22**  
**Royal Dux Art Nouveau Figure** Young Woman Holding a Large Leaf pink triangle mark, 29cm height  
\$300 - \$500
- 23**  
**Royal Dux Figure** Fairy Seated on Leaves pink triangle mark, 26cm width  
\$200 - \$300
- 24**  
**Royal Dux Figure** of 1920's Dancer pink triangle mark, 39.5cm height  
\$300 - \$450
- 25**  
**Large Pair Goldscheider Style Art Nouveau Vases** painted terracotta with female form and organic tendril form handles, impressed numbers and indistinct signature, 43.5cm height  
\$600 - \$1,000
- 26**  
**Eichwald Art Nouveau Comport** two handled boat shape bowl on tapering column with scrolling uprights on square shaped base, moulded with flowers and leaves in low relief, 34cm height  
\$140 - \$300
- 27**  
**Large Bursley Ware Chung Pattern Candlestick** restored, 40cm height  
\$50 - \$100
- 28**  
**Beswick Art Deco Jug & Bowl** oblong bowl with fluted sides and moulded foliate handles, impressed shape number 434, the baluster jug with raised bands shape number 561  
\$100 - \$200
- 29**  
**Three Beswick Palm Tree Jugs** cobalt blue, crimson & grey colourways, #1074, #1068, blue with original paper label, 23cm (2), 19cm heights  
\$140 - \$300
- 30**  
**Large Gouda Ewer** the body decorated with a wide band of flowerheads, the base with painted marks, Roba, Gouda, Holland, 39cm height  
\$300 - \$500
- 31**  
**Gouda Two Handled Onion Shaped Vase** the body decorated with a wide band of stylised scrolls, 21cm height  
\$100 - \$200
- 32**  
**Gouda Baluster Vase** with painted panels of stylised forms in blue & gold on a turquoise ground, 19cm height  
\$60 - \$120



14



17



13



12



40



8



18



19



20



21

**33 Large Gouda Circular Charger** decorated with large polychrome flowerheads and leaves on a dark blue ground, painted marks to the base, c1925-30, 47cm dia. \$500 - \$750

**34 Charlotte Rhead Crown Ducal Rhodian Pattern Wall Plate** tube lined decoration of flowers and leaves, 36cm dia. \$140 - \$260

**35 Large Royal Doulton Flambe Wall Charger By Charles Noke** the centre decorated with a faggot gatherer within a wide border of berries and leaves, signed, 48cm dia. (chip to underside foot rim) \$300 - \$500

**36 Amphora Circular Fruit Bowl** three legged, the body decorated with three oval floral panels, legs incised with scrolls, 23cm dia. \$80 - \$160

**37 Royal Doulton Slaters Patent Jardinière** \$80 - \$160

**38 Pair Royal Doulton Slaters Patent Vases** baluster shape, 26cm height \$80 - \$160

**39 Rare Charles Bailey & Co Fulham Pottery Stoneware Whisky Decanter** square shaped with incised flower and leaf decorations and impressed Scotch Whisky, 22cm height \$140 - \$280

**40 Large Moorcroft Moonlit Blue Pattern Fruit Bowl** footed circular shape, impressed marks, signature in green, c1925, 26cm dia. \$3,000 - \$5,000

**41 Modern Moorcroft Slipper Orchid Vase** baluster shape, 20cm height \$300 - \$500

**42 Modern Moorcroft Slipper Orchid Fruit Bowl** footed circular shape, 20cm dia. \$300 - \$500

**43 Large Moorcroft Marinka Pattern Vase By Rachel Bishop** tall slender baluster form, limited edition number 202/300, 2003, 37cm height, with original box \$500 - \$800

**44 Modern Moorcroft Anemone Tribute Pattern Vase** squat circular shape, tube lined decoration, base dated 2003, 11cm height with original box \$160 - \$300

**45 Small Moorcroft Leaf & Berry Pattern Vase** waisted shape with everted rim, 11cm height \$140 - \$280

**46 Small Moorcroft Tudric Tazza In Wisteria Pattern** base stamped Tudric Moorcroft 01339, 11 cm dia., 7.5cm height \$200 - \$400

**47 Small Moorcroft Pansy Pattern Vase** baluster shape, impressed marks, 9cm height \$100 - \$200

**48 Two Small Footed Moorcroft Bowls** one in Pomegranate pattern with original paper label, the other in Pansy pattern (rim damage) 7.5cm dia. \$100 - \$200

**49 Moorcroft Clematis Pattern Vase** footed ovoid form, 21.5cm height \$300 - \$500

**50 Pair Moorcroft Hibiscus Pattern Candlesticks** wide circular bases, 9cm height \$200 - \$300

**51 Moorcroft Hibiscus Pattern Limited Edition Plate** number 15/90 made to commemorate the 90th birthday anniversary of E A Joyce & Son, Tasmania, boxed 18.5cm dia. \$100 - \$200

**52 Large Italian Two Handled Faience "Bagno di Diana" Vase** in the renaissance style with scrolling serpent and mask handles, the body with an extensive river landscape with Diana and attendants bathing, 73.5cm height \$1,000 - \$1,500

**53 Capodemonte Porcelain Pot Pourri Box** oval shape with pierced hinged lid decorated in low relief with traditional playful cherubs on four scroll feet, 18cm width \$100 - \$200

**54 Large Victorian Wedgwood Porcelain Lazy Susan** footed form with brass 2 division cruet stand to the top decorated with allover floral design in blue and white, (hairline crack to underside) 51cm dia. \$300 - \$450

**55 Pair Royal Crown Derby Two Handled Cake Plates** square shaped in the Imari pattern \$100 - \$200



56

**Royal Crown Derby Shallow Dish** lozenge shape on pierced scroll feet, together with an octagonal shaped milk jug, both in the Imari pattern  
\$100 - \$200

56a

**Late Victorian Ebonised Deskstand** with Ironstone Imari pattern tile back, two ink wells  
\$80 - 160

57

**Large C19th Sunderland Lustre Bowl By Moore & Co Southwick** traditional design with panels including views of the Cast Iron Bridge Sunderland, sailing ships, motto and verse, fox hunting scene to the centre, (various hairline cracks) 31cm dia.  
\$400 - \$600

58

**C.W.S. Advertising Teapot** base printed  
Made In England  
\$50 - \$100

59

**Mettlach Art Nouveau Pate Sur Pate Soup Tureen & Stand** two handled circular footed form, the body with 2 pate sur pate panels of carousing figures, stylised scrolls beneath on wide matching circular stand  
\$600 - \$1,000

60

**Makkum Blue & White Charger** of antique design, decorated with birds and blossom, together with a framed Delft tile, miniature Delft pipe rack and Delft vase (chips to base)  
\$80 - \$160

## WORCESTER

61

**Rare Grainger Worcester Reticulated Exhibition Vase** 80cm height.  
Probably made by George Owen for the George Grainger owned Royal China Works in the late 1880s, pre-dating the takeover by the Worcester factory. photos exist in the Dyson Perrins Museum (Worcester) of the vase in the 1890s and the assumption is the vase was kept after the takeover in 1889. A photo reproduced in Royal Worcester Porcelain 1862 to the present day by Henry Sandon shows the vase in the upper floor window of Graingers shop front at Foregate, Worcester.  
\$35,000 - \$50,000

62

**Grainger Royal Worcester Urn** ovoid body on pedestal foot painted with pheasants unsigned, G648 C1901 35cm height  
\$1,800 - \$2,500



- 63**  
**Hadley Royal Worcester Specimen Vase** ovoid body on pedestal foot painted with pheasant, signed A C Lewis C1905, 28cm height  
\$1,500 - \$2,000
- 64**  
**Hadley Royal Worcester Specimen Vase** ovoid body on pedestal foot painted with pheasant, signed A C Lewis (indistinctly) C1905, 28cm height  
\$1,500 - \$2,000
- 65**  
**Pair Royal Worcester Posy Vases** compressed circular bodies painted with peacocks, one signed A Lane 2021 C1909, 14cm heights  
\$1,500 - \$2,000
- 66**  
**Royal Worcester Pot Pourri Jar and Cover** squat spherical body painted with pheasant, signed Jas Stinton, 1995 C1910, 20cm height (cover restored)  
\$1,500 - \$2,000
- 67**  
**Royal Worcester Vase** compressed circular body with pierced crown rim painted with pheasant, signed Jas Stinton, G703 C1903, 14cm height (restored re-gilded rim, hairline crack)  
\$1,000 - \$1,500
- 68**  
**Hadley Royal Worcester Specimen Vase** ovoid body painted with heron on continuous landscape, signed W Powell C1905, 26cm height (restoration to rim)  
\$400 - \$600
- 69**  
**Royal Worcester Ewer** with Griffen Handle ovoid body painted with river landscape on green ground, Harry Davis, unsigned 2156, C1901, 34cm height (wings re-gilded)  
\$1,800 - \$2,600
- 70**  
**Royal Worcester Vase** elongated ovoid body painted with scenes Alnwick Castle signed H Davis, 1764 C1903, 37cm height  
\$3,000 - \$4,000
- 71**  
**Royal Worcester Vase** elongated ovoid body painted with highland cattle, signed John Stinton, 1858 C1901, 30cm height  
\$4,500 - \$6,000
- 72**  
**Royal Worcester Comport** raised on pedestal foot painted with highland cattle, signed J Stinton, C1908, 24cm dia. (hair-line crack to rim)  
\$400 - \$600
- 73**  
**Royal Worcester Ice Jug** cylindrical body painted with lighthouse on Ivory ground, unsigned 1229, C1896, 16cm height  
\$400 - \$600
- 74**  
**Royal Worcester Posy Vase** spherical body painted with pheasants, signed Jas Stinton, 2491 C1926, 8cm height  
\$350 - \$500
- 75**  
**Two Royal Worcester Pot Pourri Vases** the smaller of two handled squat circular form with pierced cover, the larger of lobed form (lacking lid) both hand painted with flowers on a blush ivory ground, of sizes  
\$140 - \$280
- 76**  
**Royal Worcester Nautilus Shell Bowl** painted with flowers on a blush ivory ground  
\$100 - \$200
- 77**  
**Royal Doulton Hand Painted Vase** by Harry Allen baluster form with everted rim, twin gilt handles, painted with a continuous desert scene with camel, figures and grazing sheep, signed, 11.5cm height.  
The vase comes with a letter from Doulton from October 1962, informing the owner the piece dates to 1911 and with some details in regard to Harry Allen's time with the company (1900-1951)  
\$200 - \$400
- 78**  
**Late C19th Sevres Pattern Specimen Vase** ovoid body painted with romantic panels signed Rochette, bleu royale ground with champleve enamel pedestal and rim on alabaster platform 35.5cm height  
\$1,500 - \$2,000
- 79**  
**Royal Doulton Portrait Tile** painted with portrait of young shepherdess, signed Leslie Johnson, 21 x 15cm  
\$800 - \$1,200
- 80**  
**Probable Doulton Portrait Tile** oval tile painted with portrait of young beauty, signed G White 23.5 x 18.5cm  
\$600 - \$800
- 81**  
**Possible KPM Porcelain Portrait Tile** painted with portrait of young beauty 8.5 x 6.5cm  
\$200 - \$300
- 82**  
**Late C19th Porcelain Tile** oval tile painted with full length portrait of Catherine (nee Moore), Lady Bampfylde after Sir Joshua Reynolds 24 x 16cm  
\$800 - \$1,200
- GLASS**
- 83**  
**Waterford Crystal American Patchwork Pattern Vase** ovoid shape, 28cm height  
\$240 - \$400
- 84**  
**Fine Pair Large Cut Glass Hurricane Lamp/ Vases** the tall bowls with part fluting and demi lune cuts on knopped stems with circular bases, 39.5cm height  
\$400 - \$800
- 85**  
**Cut Glass Ice Jug** with S/P mount and handle, together with S/P water jug  
\$100 - \$200
- 86**  
**Edwardian Oak 2 Division Tantalus** with two square cut glass decanters and stoppers, the case with S/P handle and mounts  
\$140 - \$260
- 87**  
**Edwardian Oak 3 Division Tantalus** with three square cut glass decanters and stoppers, (lock damaged)  
\$160 - \$280
- 88**  
**S/P Wine Coaster & Cut Glass Decanter** with leaf and scroll cast rim, together with a cut glass decanter and stopper, of tapering form with faceted bands  
\$60 - \$140
- 89**  
**Set Four Elegant Glass Whisky Tumblers** each with engraved band and fluted and faceted body  
\$100 - \$200
- 90**  
**Late C19th Bohemian Ruby Glass Decanter with Five Glasses** with gourd shaped decanter, all with engraved panels  
\$100 - \$200
- 91**  
**C19th Bohemian Engraved Glass Vase** thistle shape with blue flashed borders, engraved with a stag, a tower and latticed cartouche, 14.5 cm height  
\$50 - \$120
- 92**  
**Pair Venetian Blue Glass Ewers** with applied gilt decoration, 30cm height, together with small Art Nouveau green glass and silver overlaid specimen vase, 13cm height  
\$70 - \$140
- 93**  
**Galle Style Acid Etched Glass Vase** tapering form decorated with berries and leaves in autumnal colours, 31 cm height  
\$140 - \$280



71



62



70



64



69



63



66



65



78



95



123



87



119



127



126



121

**94**  
**Galle Acid Etched Glass Atomiser** floral design in autumnal colours signed, (hose detached) 23 cm height  
\$500 - \$800

**95**  
**Lalique Clear & Frosted Glass Fruit Bowl** the wide frosted rim with jagged edged motif decoration, signed Lalique France, 26cm dia.  
\$1,000 - \$1,500

**96**  
**Murano "Elefante" Glass Sculpture** By E Cammazzo trumpeting elephant in red, green and gold colourway, with certificate of authenticity, 44cm height  
\$300 - \$500

**97**  
**Murano Glass Clown Head Paperweight** Designed By Alfredo Barbini unsigned  
\$80 - \$160

**98**  
**Iittala Alvar Aalto 'Savoy' Ruby Red Glass Vase** hand blown original design 1936 Finland, etched mark 15.5cm height  
\$300 - \$500

**99**  
**Three Victorian Cranberry Glass Jugs** each with clear glass handles, comprising a plain tapering shape, other with waved rim and baluster form example, latter with body cracks  
\$100 - \$200

**100**  
**Set Three Victorian Cranberry Glass Vases** of neo-classical vase shape, with three scrolling clear glass handles, vitruvian scroll rims and applied lion masks, 18 cm height  
\$100 - \$200

**101**  
**Pair Victorian Cranberry Glass Jack in the Pulpit Vases** with clear glass tops and feet, 18cm height  
\$50 - \$100

**102**  
**Two Victorian Cranberry Jar and Covers** circular pot with applied clear frilled rim, cylindrical jar with clear handles and crackle finish posy (rim chip)  
\$60 - \$140

## ASIAN ARTS

**103**  
**Large Resin Tusk Bridge on Stand** decorated with continuous landscape of figures, houses, trees and pagoda on a shaped hardwood stand, 73cm length  
\$160 - \$300

**104**  
**Japanese Carved Ivory & Wood Figure Group** depicting a father and son cutting fruit, 13cm width 15cm height  
\$260 - \$380

**105**  
**Japanese Ivory Lidded Cylindrical Box** decorated in low relief with monkeys and camels, also insects to the lid, base and interior, the lid finial formed as a big cat (small chip to lid rim) 10cm height, 8cm dia  
\$200 - \$400

**106**  
**Japanese Ivory Lidded Circular Box & Netsuke** box decorated with three elephants, 6.5cm dia. together with a netsuke of a seated man holding a root vegetable (2)  
\$100 - \$200

**107**  
**Small Japanese Carved Ivory Spill Vase** carved with a continuous scene of figures in a garden, 10.5cm height  
\$200 - \$400

**108**  
**Five Various Ivory & Bone Lidded Boxes** comprising four circular and one oblong hinged example, of sizes  
\$100 - \$200

**109**  
**Seven Various Ivory & Bone Carvings** comprising lidded cylindrical jar, needle case (af) three napkin rings, egg shaped ornament and small netsuke type figure  
\$160 - \$260

- 110**  
**Small Ivory Lidded Dressing Table Pot** the lid carved with shrimps, together with a dragon carved cheroot holder, a fan and snuff bottle, the latter two probably bone \$100 - \$200
- 111**  
**Small Dieppe Ivory Carving of George & the Dragon** on wooden base together with two smaller Asian carvings \$100 - \$200
- 112**  
**Japanese Carved Wooden Figure Of A Horned Demon** carrying a gourd (ear chipped), together with a small cylindrical brass spirit level with treen holder \$100 - \$200
- 113**  
**Japanese Horn Cigar Case** decorated in low relief with a wading crane \$60 - \$120
- 114**  
**Japanese Bone Pencil Holder** cylindrical shape with scrimshaw type engraving of a trumpeting elephant, 9.5 cm length \$50 - \$100
- 115**  
**Three C18th Chinese Imari Plates** with traditional floral decoration in iron red and blue, 23cm dia \$140 - \$260
- 116**  
**Two C19th Chinese Blue & White Plates** one decorated with children playing Blind Mans Buff, the other with tables of floral urns and pots, 25cm dia \$300 - \$500
- 117**  
**Chinese Blue & White Cylindrical Vase** with everted rim, decorated with 2 quatrefoil shaped panels of figures in a landscape, small chip and frits to rim, 30.5cm height \$100 - \$200
- 118**  
**Near Pair Late C19th Chinese Crackleware Vases** baluster shape decorated in blue and white, one with birds, insects and blossom the other with foo dogs playing, 23.5cm height \$100 - \$200
- 119**  
**Chinese Blue & White Square Shaped Dish** the centre decorated with a traditional river landscape and figures in a boat, calligraphy to the upper right corner with a simulated bamboo surround and feet, \$140 - \$300
- 120**  
**C19th Japanese Imari Plate** decorated with panels of birds, blossom and butterflies, 30cm dia \$80 - \$160
- 121**  
**Large Pair Cantonese Famille Rose Export Ware Vases** traditional design with panels of figures, birds, insects and blossom and applied gilt dragon, 62cm height, (one damaged) \$800 - \$1,200
- 122**  
**Large Framed Cantonese Ceramic Panel** depicting an extensive river landscape with numerous figures and small dog, 79.5cm by 135cm overall \$500 - \$1,000
- 123**  
**Pair Japanese Meiji Period Cloisonne Plates** the centres decorated with a dragon within a border of stylised motifs, 29.5cm dia \$260 - \$400
- 124**  
**Two Chinese Heavy Bronze Grain Scoops** lacking handles \$60 - \$120
- 125**  
**Late C19th Japanese Bronze Vase** ovoid form relief cast in silver and copper with birds and blossom together with a small bowed S/S cigarette case \$260 - \$340
- 126**  
**Tibetan Style Gilded Bronze Buddha** traditional form seated on lotus leaves on octagonal base, 32cm height \$350 - \$700
- 127**  
**Asian Bronze of Seated Boy With Basket** on original hardwood stand \$500 - \$1,000
- 128**  
**Chinese Red Lacquered Dome Top Scroll Box** rectangular shape with brass lock and carrying handles and lift out tray 58.5cm length, together with an ebonised and gilded calligraphic panel \$100 - \$240
- 129**  
**C19th Chinese Scroll Portrait** Of A Court Official (some faults) \$350 - \$700
- 130**  
**Antique Ivory Cigarette Box** plain oblong shape the detachable lid applied with a gilt elephant beneath a palm tree, 11.5cm width \$140 - \$260
- 131**  
**Victorian S/S Mounted Ivory Lidded Glass Vanity Pot** with faceted glass body the lid with inlaid gold monogram \$140 - \$280
- 132**  
**Set Four Late Vict S/S & Ivory Knife Rests** \$200 - \$400
- 133**  
**Anglo Indian Tortoiseshell & Bone Jewellery Box** oblong slightly domed form with applied pierced & strap-work decorations on paw feet, Vizigapatam region c1900, 11.5cm width \$100 - \$200
- 134**  
**Early C19th German Scrimshawed Bone Snuff Box** oval shape, the hinged lid decorated with a gun dog chasing a bird, the front with landscape and verse, the back with a musical cherub \$140 - \$260
- 135**  
**C19th Scrimshaw Whale Tooth** decorated with a sailing ship, anchors and love heart, lion and horse and the name William Smith to one side, and his initials, a lady holding a flower, kangaroo and ostrich to the other \$400 - \$600
- 136**  
**Fijian Tabu and Whale Tooth** tabu of whale tooth drilled holes, detached from new rope with other plain whale tooth 13cm, 12cm \$160 - \$300
- 137**  
**Pair Seal Skin Moccasins** with beaded work \$30 - \$80
- 138**  
**Large Polished Greenstone Boulder & Smaller Example** of sizes \$300 - \$500
- 139**  
**Three pieces of Kauri Gum** \$100 - \$200

## WOODS & METALS

- 140**  
**Large Pair Floral Painted & Gilded Tiles** originally from a church in Singapore, brought to New Zealand c.1950s, 44 x 16cm \$100 - \$200
- 141**  
**Two Victorian Framed Pratt Ware Pot Lids** transfer decorated, one depicting a landscape with figures and horse by a tower, the other with a family in an interior, together with two small circular framed prints of rustic English cottages \$80 - \$140

- 142**  
**After Jean Etienne Liotard Miniature Portrait** of The Countess Of Cork, half-length study on ivory in oval ebonised frame  
\$240 - \$400
- 143**  
**Mid C19th English Portrait Miniature** portrait of young naval midshipman painted on ivory in ebonized frame, 6 x 5cm  
\$100 - \$300
- 144**  
**Mid C19th English Portrait Miniature** dated 1847 portrait of lady of the manor on ivory in ebonized frame 8 x 6cm  
\$100 - \$300
- 145**  
**Vintage Stereoscopic Viewer & Slides** with 15 slides, 11 NZ & Maori themed  
\$60 - \$120
- 146**  
**Vintage Underwood & Underwood Stereoscopic Viewer** with a qty of assorted slides  
\$80 - \$160
- 147**  
**Victorian Brass Cased Carriage Clock & Case** with swing handle, visible escapement, the white dial with roman numerals in red morocco carrying case  
\$300 - \$600
- 148**  
**C1870 Rosewood Cased Wall Clock** in the Manner of Thomas Cole engraved brass and silvered dial, eight day movement, watch type English lever escapement with steel balance, original case key 20 x 14 x 5cm  
\$450 - \$650
- 149**  
**Mid Century Hettich Mantle Clock** with horizontal rotating balance wheel  
\$50 - \$100
- 150**  
**Art Nouveau Cast Brass Mantle Clock** with clock face to one side and young woman in profile to the other, 22cm width  
\$200 - \$300
- 151**  
**Art Nouveau Copper Mantle Clock** with embossed stylised florals and large turquoise enamel cabochon, 34cm height  
\$400 - \$700
- 152**  
**Geo III Mahogany Cased Twin Fusee Bracket Clock by Edward Green** London, white enamel dial with central calendar hand, bell strike with original verge escapement, 34cm height (fully overhauled in 2015)  
\$3,000 - \$4,000
- 153**  
**Victorian Bronzed Brass Prismatic Pocket Barometer** the green card dial stamped Troughton & Simms, London in original fitted burgundy morocco case  
\$100 - \$200
- 154**  
**Rare Blickensderfer No 6 Vintage Typewriter** in original case the lid stamped P Heyes Wellington c1902-1916. This lighter cast aluminium Blicks model was known as "The Five Pound Secretary", both case and typewriter well worn.  
\$500 - \$800
- 155**  
**C19th Swiss Musical Box** simulated rosewood case, the lid transfer printed with GB coat of arms, lid with lithograph label showing 8 airs, 39 cm width  
\$300 - \$500
- 156**  
**Vintage Harmonium** traditional table top model in walnut case with bellows in working condition 54cm length  
\$200 - \$400
- 157**  
**Military Copper & Brass Bugle**  
\$80 - \$160
- 158**  
**Malaysian Kris** traditional form with waved and fullered steel blade, carved walnut handle and engraved brass sheath  
\$80 - \$160
- 159**  
**Rare C17th German Iron Powder Tester** 22cm length  
\$600 - \$1,000
- 160**  
**Small Bronze Model Cannon** 26cm length  
\$80 - \$160
- 161**  
**Austrian Bronze Cold Painted Jack Russell Terrier**  
\$100 - \$200
- 162**  
**An Interesting C19th Goldfields Carved Wooden Guitar Pendant** found in a stone hut on the Arrow River during restoration work in 1981  
\$120 - \$200
- 163**  
**C19th NZ Historical Wellington Cricket Presentation Gavel** applied silver bands to the hammer top and bottom and central oval plaque engraved Presented to Mr Wm Bromley b the Cricketers of Wellington NZ in recognition of his services as umpire October 1871, 24cm length, 13cm height  
\$300 - \$600
- 164**  
**Pair Geo III Style Oak Candlesticks** with baluster columns on dished circular bases, 36 cm height  
\$120 - \$280
- 165**  
**Antique Russian Brass & Enamel Crucifix** 26cm height  
\$120 - \$240
- 166**  
**Pair C19th Indian Brass Goblets** traditional ornate engraving with alternating panels of animals and deity, 16cm height  
\$60 - \$140
- 167**  
**Eastern Silver Inlaid Spice Box** two handled rectangular shape with canted corners, interior with twin lidded central compartment and further smaller compartment to each end  
\$140 - \$280
- 168**  
**Peruvian Bronze & Silver Overlaid Wall Plaque** applied with 4 Greek key panels to the edge and ancestor figure to the centre, 27cm dia  
\$100 - \$200
- 169**  
**Pair Peruvian Bronze & Silver Overlaid Candlesticks** together with two vases, all applied with silver bird and ancestor type figures  
\$100 - \$200
- 170**  
**Eight Peruvian Bronze & Silver Overlaid Napkin Rings** each applied with silver bird, animal and ancestor figures  
\$50 - \$100
- 171**  
**C19th European Painted Glass Panel** depicting two figures and a dog by a large country house, in a stained glass surround with copper outer, 29.5 x 41cm  
\$100 - \$200
- 172**  
**Late C19th Cast Brass Deskstand** oblong shape with twin lidded wells and pen holder, together with a similar rectangular pen tray  
\$200 - \$400
- 173**  
**Sheraton Style Mahogany Pocket Watch Stand** in the form of a longcase clock, with hinged top and shell paterae to the top, trunk and base, 28cm height  
\$60 - \$120
- 174**  
**Vict Walnut & Parquetry Banded Jewellery Box** 25cm width  
\$100 - \$200



152



395

**175**  
**Vict Burr Walnut & Parquetry Banded Tea Caddy** oblong dome top shape, the interior with twin lidded compartments  
\$150 - \$250

**176**  
**Geo III Mahogany Tea Caddy** plain oblong shape, shell and scroll cast handle, three division interior on brass lions paw feet, 25cm width  
\$200 - \$300

**177**  
**Wm IV Rosewood Sarcophagus Tea Caddy** traditional form, two handled (one chipped), interior with 2 lidded compartments and glass mixing bowl on bun feet, 31cm width  
\$140 - \$260

**178**  
**Victorian Coromandel Wood Sewing Box** the lid and front with inlaid lozenge panels in MOP and abalone, green silk lid interior and gilded lift out tray 29cm width  
\$200 - \$300

**179**  
**Victorian Tunbridge Ware Work Box** all inlaid with floral lozenge design to lid and geometric design to edges 27 x 18 x 6.5cm  
\$200 - \$400

**180**  
**Regency Walnut and Brass Inlaid Circular Shaving Mirror** with brass ratchet mechanism, turned vase shaped column, 23.5cm dia  
\$100 - \$200

**181**  
**Pair C19th German Patinated Cast Iron Figural Candlesticks** with stamp for Zimmermann Hanau, No 12209/11, 36 cm height  
\$100 - \$200

**182**  
**Bronze of Racehorse Our Maizcay** by C A Bodde on a rectangular kauri base  
\$200 - \$400

**183**  
**Resin Model Of Racehorse Our Maizcay** signed J Skeating, on oblong kauri base  
\$160 - \$300

**184**  
**Bronze Racehorse & Jockey** by R Cameron on a rectangular mahogany base  
\$200 - \$400

**185**  
**Bronze Racehorse & Groom** by C A Bodde signed & dated '95  
\$200 - \$400

**186**  
**Eddie Hackman (Australian) Two Ltd Edition Bronze Figures** The Ringer and The Prospector, each limited edition of 1000 c1987, with original receipts and catalogue, together with a small oil landscape study, indistinctly signed  
\$300 - \$500

**187**  
**Two Geo III Pewter Plates** both with engraved initials, 26cm dia.  
\$50 - \$100

**188**  
**Two Geo III Pewter Plates** both with London touch marks, of sizes  
\$50 - \$100

**189**  
**Victorian Pewter Quart Tankard** tapering form with spout, together with two smaller baluster pewter tankards  
\$50 - \$100

**190**  
**Five Piece Tudric Pewter Teaset** comprising circular tray, teapot, hot water jug, milk jug and sugar bowl, design number 1075  
\$100 - \$200

**191**  
**Tudric Pewter Footed Bowl** of plain hammered form shape design number 0831, together with another circular shallow Tudric bowl number 0202 (2)  
\$60 - \$120

**192**  
**Liberty Tudric Pewter Sugar & Cream Set** designed by Archibald Knox, number 0231, together with a pewter circular fruit bowl on three stylised feet.  
\$100 - \$200

**193**  
**Edwardian S/Plate & Oak Deskstand** with fixed scroll handle and two detachable cut glass wells  
\$60 - \$120

**194**  
**Antique Copper Cooking Pot** with cast iron handle, the base stamped C E Cars  
\$60 - \$120

- 195**  
**Antique Copper Cooking Pot by Charles R Ruegger New York** cast iron handle, 22.5cm dia., with French ceramic coffee pot (af)  
\$60 - \$120
- 196**  
**Four Various Vintage Copper Cooking Pans** each with brass handle, two with lids, of sizes  
\$160 - \$300
- 197**  
**Vintage Milwards "The Holland" Travellers Greenheart Fly Rod** with 12 parts and canvas case (af)  
\$60 - \$120
- 198**  
**Art Nouveau Two Handled Rectangular Tray** hand hammered with embossed stylised leaves to each corner, 63cm length  
\$60 - \$120
- 199**  
**Art Nouveau Rectangular Tray** with engraved border of stylised tendrils & hearts, 58cm length  
\$50 - \$100
- 200**  
**Art Nouveau Copper Jardinière By Joseph Sankey & Sons** decorated with stylised leaf forms, together with brass crumb tray and brush and other crumb tray  
\$50 - \$100
- 201**  
**Two Art Nouveau Copper Jugs** of tapering form with embossed stylised motifs, of sizes  
\$60 - \$120
- 202**  
**Three Art Nouveau Copper & Brass Jugs By Joseph Sankey & Sons** tapering form with domed lids and embossed stylised motifs  
\$80 - \$160
- 203**  
**Art Nouveau Lidded Copper Coal Bin** with lion mask and ring handles and embossed stylised scrolling motifs  
\$200 - \$400
- STERLING SILVER**
- 204**  
**QEII S/S Sugar Caster** footed baluster shape, pierced dome top with flaming finial, Birmingham 1956  
\$100 - \$200
- 205**  
**Geo V S/S Cream Jug & Matching Sugar Caster** neo-classical vase shape, Birmingham 1926, approx 260gms  
\$200 - \$300
- 206**  
**Victorian S/S Sugar Caster** footed vase shape, pierced body and top with flaming finial, London 1898  
\$200 - \$300
- 207**  
**Pair Geo V S/S Gravy Boats** with waved rims, shell top legs on hoof feet, engraved 25 year anniversary dates to each, London 1911  
\$220 - \$300
- 208**  
**Geo VI S/S Gravy Boat** plain form, Sheffield 1937  
\$100 - \$200
- 209**  
**Cased Vict S/S Gilt Cup** with beaded rim, knob and base, leaf cast scroll handle, engraved with grapes, vines and monogrammed cartouche, London 1868, maker Thomas Smily  
\$200 - \$400
- 210**  
**Victorian S/S Mug** with acanthus handle, tapering body decorated with wheat sheafs and farming implements in low relief and engraved name of Frederick J Jackson, gilded interior on scroll feet, London 1839, maker Charles Fox II  
\$200 - \$400
- 211**  
**Cased Geo V S/S Cup on Stand & Spoon** footed two handled form with engraved inscription and associated spoon, London 1910, approx 244gms  
\$200 - \$300
- 212**  
**Cased Geo V S/S Desk Set By Asprey & Co Ltd** comprising, pair of column candlesticks, Capstan inkwell, dip pen and propelling pencil in original fitted purple morocco leather case, London 1912  
\$300 - \$500
- 213**  
**Must de Cartier Paris Ballpoint Pen** gold plate with red enamelled pocket clip, original box #313041  
\$400 - \$500
- 214**  
**Cafe de Paris (London) S/S 21st Birthday Key** Sheffield 1954, inscribed Shirley Osborne with Best Wishes, original box  
\$200 - \$400
- 215**  
**NZ Colonial Greenstone Silver Mounted Paper Fold** speckled green jade blade, cutlery form handle with silver filigree mounts, 20cm length  
\$400 - \$800
- 216**  
**Victorian S/S Snuff Box** oblong shape with engine turned decoration lid cartouche engraved David Jackson Perth 1867, Birmingham 1859, maker Edward Smith  
\$160 - \$280
- 217**  
**S/S Rectangular Cigarette/Cigar Box** engine turned with applied laurel leaf handle, 20.5 cm width, marks worn  
\$200 - \$400
- 218**  
**Edw VII S/S Comport** with waved rim and base, Sheffield 1907, 21cm dia, approx 41gms  
\$300 - \$400
- 219**  
**Set Three Modern Design S/S Candleholders** the larger of four division with fixed triangular drip pans on splayed legs with pair of matching two brass examples, Sheffield 1975, makers initials JL (probably John Lodge) approx weight 830gms  
\$600 - \$1,000
- 220**  
**S/Plate Candelabra** with two scrolling branches and embossed decoration  
\$50 - \$100
- 221**  
**Wm IV S/S Teapot** squat circular on scroll cast feet, with engraved cockerel crest, London 1837, approx 570gms  
\$500 - \$750
- 222**  
**Wm IV Scottish S/S Teapot** squat circular shape, acanthus top scroll handle, embossed floral and cartouche decoration on scroll feet, Edinburgh 1832, maker James McKay, approx 757gms  
\$600 - \$850
- 223**  
**Fine Geo III S/S Four Piece Tea Service** oblong shape, gadrooned rims, fluted and basket weave bands to the body on scallop shell feet, including large and impressive tea urn, on original concave walnut platform base, London 1808 & 1809, makers, James Ede & Alexander Hewat, approx 5.276 kg  
\$5,000 - \$8,000
- 224**  
**Victorian S/S Four Piece Tea & Coffee Service** comprising of coffee pot, tea pot, sugar & cream, of footed hexagonal baluster form with foliate engraved panels, the pot lids with finials formed as Orientals, London 1845, makers, Edward, Edward Junior, John & William Barnard  
\$1,500 - \$2,500





224



223

- 225**  
**Victorian S/S Teapot** footed hexagonal baluster shape, with foliate engraved panels, the lid finial formed as a seated oriental with wide brimmed hat and pipe, London 1844, makers Edward, Edward Junior, John & William Barnard  
\$600 - \$1,000
- 225a**  
**C19th S/S Auckland Jockey Club Horse Racing Cup** of campana form with floral and acanthus leaf decoration and twin greyhound handles, the associated lid (unmarked) with sailor finial, engraved inscription reads, "Silver Cup Presented To Auckland Jockey Club Won By Mr M J S Chadwick's Horse War Eagle 3rd Jan 1865, London, makers Edward, Edward Junior, John & William Barnard, date letter rubbed, mid C19th 32cm height  
\$4,000 - \$6,000
- 226**  
**Extensive 126 Piece Sola Hollands Glad Pattern Silver Suite of Cutlery** 9 place setting, comprising, table forks, table knives, tablespoons, fish knives and forks, dessert knives and forks, soup spoons, dessert spoons, butter knives, tea/coffee spoons, pair salad servers, pair serving spoons, sauce ladle, cake spoon/slice and additional set of 9 steak knives, approx 8kg including stainless steel knife blade weights, each with impressed Dutch Rijkskeurmerk silver marks and 999 standard.  
\$10,000 - \$15,000
- 227**  
**Extensive Cased Eighty Eight Piece K + B Sweden .830 Silver Suite of Cutlery** comprising, 12 table forks, 12 table knives, 12 tablespoons, 12 dessert spoons, 12 cake knives, 12 tea/coffee spoons, pair of soup ladles, pair of sauce ladles, 2 pairs carving forks and knives, pair of salad servers and 6 various serving spoons, (pair and 4 other matching) as new all in original cellophane bags, blue fitted case stamped Hefra, Warsaw. A fine set in unused pristine condition.  
\$4,000 - \$6,000
- 228**  
**S/S Eight Place Setting Cutlery Service**  
78 pieces consisting of table knives, entree knives, table forks, entree forks, table spoons, dessert spoons, soup spoons, parfait spoons, tea spoons, coffee spoons (one coffee spoon af), Sheffield 1954 maker Martin Hall & Co Ltd, approx 3.64kg (including stainless steel knife blade weight)  
\$4,000 - \$6,000
- 229**  
**Cased Towle 43 Piece S/S Cutlery Set** in fitted zip top case, 1937 Chippendale pattern, comprising 6 table knives, 6 table forks, 6 butter knives, 6 soup spoons, 6 dessert spoons, 6 dessert forks, 3 table spoons, sauce ladle, fish knife, preserve spoon and cake fork  
\$1,000 - \$1,500
- 230**  
**C19th S/S Fish Slice** with beaded handle and bright cut pierced blade, marks worn  
\$140 - \$240
- 231**  
**Wm IV S/S Fish Slice** fiddle pattern with engraved crest and pierced blade, London 1835, maker Mary Chawner  
\$140 - \$240
- 232**  
**Two Georgian S/S Sauce Ladles** Old English feather edge pattern, bright cut engraving and crest, marks worn  
\$140 - \$200
- 233**  
**Pair Victorian S/S Berry Spoons** with bright cut engraving, spiral handles and gilded bowls, Sheffield 1886  
\$100 - \$200
- 234**  
**Geo III S/S Sifter Ladle** fiddle and thread pattern with engraved crest, London 1797, maker Jonathan Hayne  
\$80 - \$140
- 235**  
**Geo III S/S Marrow Scoop** traditional double ended form, engraved crest, London 1807, makers William Ely, William Fearn & William Chawner  
\$200 - \$350
- 236**  
**Geo III S/S Marrow Scoop** traditional double ended form, London 1818, makers Solomon Royes & John East Dix  
\$200 - \$350
- 237**  
**Geo III S/S Marrow Scoop** traditional double ended form, London 1789, makers initials indistinct  
\$200 - \$350
- 238**  
**Six European Fiddle & Thread Pattern Table Forks** comprising one 84 standard silver fork & five S/Plate  
\$50 - \$100
- 239**  
**Pair Geo III S/S Berry Spoon & Victorian Salad Servers** berry spoons bright cut decoration and embossed bowls, London 1783, maker Thomas Wallis II, together with pair late Victorian S/Plate salad servers with Imari pattern ceramic handles (spoons approx 114gms)  
\$120 - \$240
- 240**  
**Cased Set Six Geo V S/S Coffee Spoons** Birmingham 1934, together with a cased set of twelve s/plate teaspoons and tongs  
\$100 - \$200
- 241**  
**Cased Set Six Art Deco S/S Fruit Knives & Other Cased Set** fruit knives with pointed tops and beaded edge, Sheffield 1930, together with cased set of six S/S fiddle pattern coffee spoons  
\$80 - \$140
- 242**  
**Cased Set Six S/S Handled Fruit Knives** Sheffield 1921, together with composed set of teaspoons & tongs comprising four S/S with matching tongs and two odd plated and cased pair of S/S pickle forks with MOP handles  
\$100 - \$200
- 243**  
**Cased Set Six S/S 1901 Federation Teaspoons** with fancy scroll handles, the bowls with profile portrait of the Duke & Duchess of York  
\$50 - \$100
- 244**  
**Cased Set Six Dutch Silver Teaspoons** with windmill finials, together with Dutch silver tea strainer, ashtray, caddy spoon, cake slice and three other spoons  
\$200 - \$400
- 245**  
**Set Twelve Dutch Silver Fish Knives & Twelve Forks** approx 1325gms  
\$800 - \$1,200
- 246**  
**Dutch Silver Teapot** plain footed oval shape with fluted rim, approx 649gms  
\$500 - \$800
- 247**  
**Unmarked Probably Dutch Silver Bread Basket** oval shape with swing handle, mesh form with solid central boss, 22 cm width  
\$200 - \$400
- 248**  
**Dutch Silver Two Handled Table Bowl** elliptical shape with beaded rim and pierced gallery, (base detached) approx 785gms  
\$500 - \$800
- 249**  
**Four .800 Thai Silver Baskets** all with pierced and embossed floral borders, largest with two rim splits, approx 667gms  
\$350 - \$550
- 250**  
**Small .800 Eastern Silver Circular Bowl** with wide pierced border, together with a similar basket, and four small spoons with similar serving spoon and fork  
\$80 - \$160



226



227



228



252



214



215



225a

- 251**  
**Small Group Dutch Silver & Plated Items** comprising an ashtray with embossed figures at a tavern, souvenir spoon, glass decanter with silver figural stopper, small oval pin dish, specimen vase and miniature figure \$140 - \$280
- 252**  
**Fine C19th French Silver & Engraved Glass Aiguire Claret Jug** of Neo Classical design, the hinged lid with open crown finial, engraved and faceted glass body on scrolling foliate embossed circular base, 35 cm height \$800 - \$1,200
- 253**  
**Cut Glass Claret Jug** footed ovoid shape with s/plate mount, together with S/P three division decanter stand containing two cut and faceted glass decanters and stoppers \$100 - \$200
- 254**  
**Pair Art Deco S/Plate Curtain Tie Backs** oval cabochon form, together with an Art Deco glass vase \$60 - \$120
- 255**  
**Late C19th French Bleu Royale Enamel Jewel Casket** oval quatrefoil shaped box with enamel bead and gilt decorations all with gilt metal fittings, original silk interior lining 17cm length \$400 - \$600
- 256**  
**Three Geo III Bilston & Battersea Enamel Patch Boxes** all oval, two with motto and verse to the lid the other with a bowl of flowers (all with faults), together with two later circular examples \$120 - \$260
- 257**  
**Edwardian VII S/S Calling Card Case** Birmingham 1907, together with small Victorian MOP purse, the applied silver panel with engraved initials, a small filigree purse and scroll decorated seal and Chinese brass finger nail guard (af) \$120 - \$240
- 258**  
**Victorian S/S Top Ruby Glass Scent Flask** faceted tapering form together with hand held vanity mirror and glove stretchers \$60 - \$140
- 259**  
**Three Edwardian Glass Dressing Table Bottles** the largest of lighthouse shape with engraved S/S collar another with plain s/s collar and ball shaped collar, the third of faceted cylindrical shape, plated top and two s/s napkin rings, S/S rimmed cushion cut glass knife rests \$100 - \$200
- 260**  
**Late C19th Turquoise Glass Scent Flask** flattened circular form with silver mounts on embossed art nouveau metal brooch \$100 - \$200
- 261**  
**Large Early C20th Silver Plate Mesh Purse** together with two .800 Thai Silver Foliate Embossed Dress Clips \$60 - \$120
- 262**  
**Edw VII S/S Retractable Razor Strop** cylindrical shape with loop handle and embossed floral decoration, London 1903 \$140 - \$260
- 263**  
**QEII S/S Photo Frame** with arched top, scroll, lattice and cabochon surround, together with a S/S engine turned hand mirror \$100 - \$200
- 264**  
**Two S/S Photograph Frames** one small plain circular, the larger with embossed scroll decoration, a small copper photo frame and shamrock shaped S/S ashtray, Sheffield 1902 \$120 - \$200
- 265**  
**Collection Small S/S Items** comprising four salts, circular snuff box with engraved monogram to the lid, mustard pot, three pepperettes, pocket watch holder, photo frame, napkin ring, together with copper art nouveau photo frame, approx 535 gms \$300 - \$500
- 266**  
**Cased Vict S/S Three Piece Sugar & Cream Set** oblong shape with embossed floral band on ball feet, comprising sugar bowl, cream jug and tongs, Sheffield 1887 \$120 - \$260
- 267**  
**Iranian 84 Standard Silver Cigarette Box** oblong shape, ornately engraved with all over foliate field \$260 - \$380
- 268**  
**Two Pairs S/S Sugar/Ice Tongs** together with S/S Sifter spoon, other spoon and S/Plate cream jug (5) \$50 - \$100
- 269**  
**Pair S/S Salts** cylindrical shape, pierced bodies with cherub topped cartouche and cornucopia on scroll legs with blue glass liners \$60 - \$140
- 270**  
**Edw VII S/S Salver** circular shape with fluted edge and gadrooned border, Birmingham 1908, 26.5cm dia, approx 449g \$340 - \$460
- 271**  
**Four Victorian S/S Piece Tea Set** oblong part fluted with gadrooned rims, including spirit kettle, Birmingham 1897-98, maker Thomas Hayes \$1,500 - \$2,500
- 272**  
**Victorian/Edward VII Composed S/S Three Piece Bachelors Teaset** oval part fluted, teapot and milk jug London 1902, sugar bowl 1895 \$600 - \$1,000
- 273**  
**Five Small S/S Items** comprising, Geo V cream helmet, Vict christening mug by the Barnard family, small footed circular bowl, small photo frame and Dutch sifter spoon, approx 350gms \$320 - \$460
- 274**  
**Edwardian VII S/S Tea Caddy** part fluted cylindrical body, Birmingham 1908, approx 96gms \$120 - \$200
- 275**  
**Late Vict/Edw S/S Milk Jug** footed squat circular shape, with embossed decoration and floral cast rim, approx 232g \$120 - \$200
- 276**  
**Geo VI S/S Stand** comport or bowl base, approx 320gms \$240 - \$380
- 277**  
**Set Six Small Dutch Silver Coasters** circular with pierced galleries, 7cm dia, approx 330gms \$200 - \$300
- 278**  
**Small S/S Dhow on Stand** approx 110gms \$120 - \$200
- 279**  
**18 Pieces Mixed S/S Cutlery** comprising four Hanoverian pattern table forks, five dessert forks, dessert spoon and three teaspoons, pair Old English tablespoons and four Old English dessert spoons, approx 862gms \$600 - \$900
- 280**  
**Part Set Edwardian VII S/S Fruit Knives & Forks** with MOP handles, comprising twelve forks and ten knives, Sheffield 1905 \$350 - \$700



219



271

- 281**  
**Small Qty Mixed S/S Cutlery** comprising three butter knives, sugar tongs, caddy spoon, egg spoon and pusher, two cake forks, five teaspoons, salt & pepper pots and s/s handled paper knife and bone handled ladle approx 245g  
\$200 - \$300
- 282**  
**Eleven Various S/S Cutlery Items** comprising Victorian fiddle pattern sauce ladle, five fiddle pattern teaspoons, four other spoons and cake fork  
\$100 - \$200
- 283**  
**Set Six S/S & Enamel Coffee Spoons** each with differing colour handles, together with two others  
\$200 - \$300
- 284**  
**13 Various Geo VI S/S Coffee Spoons** with shaped pointed tops, Birmingham 1940 & Birmingham 1923  
\$120 - \$200
- 285**  
**Composed Victorian S/S Three Piece Christening Set** together with S/S teaspoon  
\$100 - \$200
- 286**  
**Geo V S/S Bon Bon Basket** footed octagonal form with pierced panels and swing handle, London 1916, together with a S/S engraved napkin ring, approx 133gms  
\$160 - \$240
- 287**  
**Cased Set Twelve Geo V S/S Teaspoons & Tongs** with engraved initial, Birmingham 1930  
\$140 - \$260
- 288**  
**Cased Pair Fancy S/Plate Serving Spoons** with a pair of figures to each top, spiral twist stems and gilded bowls  
\$60 - \$120
- 289**  
**Cased Pair Edw VII S/S Gilt Coronation Spoons** in fitted red morocco case by The Goldsmith & Silversmiths Company, London 1903  
\$60 - \$120
- 290**  
**Late Vict Part Canteen of S/Plate Cutlery** mahogany canteen including fish set, bone handles knives etc  
\$120 - \$260
- 291**  
**Boxed Set Twelve Late Vict Dessert Knives & Forks** mahogany box with inlaid top  
\$50 - \$120
- 292**  
**Small Group Mixed S/Plate Items** comprising a set of six asparagus tongs by Christofle, two boxed sets of six teaspoons, two handled quaich and tea strainer  
\$100 - \$200
- 293**  
**Selection Mixed S/P Cutlery** including soup ladle, basting and serving spoons, sauce ladle, bean top coffee spoons etc  
\$50 - \$100
- 294**  
**S/S Three Piece Cruet Set** comprising salt, pepperette & mustard pot, together with a baluster shaped s/s pepperette with embossed scrolling decoration and a s/s napkin ring, approx 264g  
\$140 - \$260
- 295**  
**Geo V Three Piece S/S Cruet Set** plain baluster shape comprising, salt, mustard pot and pepperette, Chester 1911 together with footed circular salt  
\$100 - \$200
- 296**  
**Victorian S/S Mustard Pot** cylindrical shape, with shell thumbpiece and reticulated body, London 1900 (missing liner), together with set six NZ S/S coffee spoons with paua shell tops, two s/s salt spoons and pickle fork, approx 164g  
\$100 - \$200
- 297**  
**S/P Sugar Tongs** two pairs asparagus tongs & bread fork  
\$60 - \$120
- 298**  
**Small Group S/S Cutlery Oddments** comprising Dutch fork, egg spoon, jam spoon, coffee spoon and fiddle pattern teaspoon  
\$60 - \$100
- 299**  
**Nine Small S/S Items** comprising, nail buffer, pencil holder, pill box, two napkin rings, scissors, butter knife, teaspoon and jam spoon, small MOP handled knife, miniature hand mirror, comb & kewpie rattle  
\$100 - \$200
- 300**  
**Six Pieces Dutch Silver Cutlery** comprising, sauce ladle, two large serving spoons, dessert spoon & fork, fancy fork with owl finial, together with a plated table bell and two boxed plated napkin rings  
\$140 - \$260



357



**SESSION TWO**

**FRAMED WORKS**

**PERIOD FURNISHINGS**

**Wednesday 24th March**

**5pm start**

**Lot 301 - 465**

## FRAMED WORKS

- 301**  
**Thomas Fairbourne**  
*A 19th Century Canal Scene With Barge*  
watercolour, 19.5 x 30cm  
\$200 - \$400
- 302**  
**E. Gouldsmith (1852-1932, RBA)**  
*English Village Watercolour (Bray)*  
watercolour on paper, signed & dated 1872 (lower right), 21 x 31.5cm together with a monochromatic river scene watercolour  
\$150 - \$300
- 303**  
**Pair of Victorian Landscapes Watercolours**  
*Rocky Coastal Scene & Mountain River Scene*  
both watercolours, 23 x 52cm ea.  
\$150 - \$300
- 304**  
**R Dighton (after)**  
*C1835 hand coloured lithograph of Fulwar "Craven", 4th Baron Craven, English nobleman and sportsman by George Rowe*  
26.5 x 20cm  
\$80 - \$140
- 305**  
**C19th European**  
*Young Girl On A Terrace*  
watercolour, 25.5 x 17cm  
\$100 - \$200
- 306**  
**Florence Fitzgerald (British 1857-1927)**  
*An Old Church in Kent*  
oil on canvas, signed & dated '20 (lower left)  
39 x 59cm  
\$240 - \$450
- 307**  
**George Stanfield Walters (British 1838-1924)**  
*Fishing Boats At Dusk*  
watercolour, signed (lower left) , 24 .5 x 34cm  
\$300 - \$500
- 308**  
**Ernest Rodgers**  
*Shipping On The Thames At Dusk*  
watercolour , signed with initials (lower left)  
10.5 x 14.5cm  
\$200 - \$350
- 309**  
**Manner of David Cox**  
*Three Young Boys Fishing*  
watercolour , bears signature (lower left)  
10.5 x 14cm  
Provenance: purchased Christies, South Kensington  
\$300 - \$600
- 310**  
**Alan Whitehead (b 1952)**  
*Pair English Estuary Scenes With Fishing Boats*  
watercolours, signed (lower right) , 14 x 21cm  
\$400 - \$700
- 311**  
**Pair of English Coastal Landscapes**  
watercolours, indistinctly signed (lower left)  
12 x 24.5cm  
\$300 - \$450
- 312**  
**W M Birchall**  
*London Bound With The Wool Clip*  
watercolour, signed, inscribed with title & dated 1930 (lower left) , 26 x 38cm  
\$750 - \$1,250
- 313**  
**After John F Herring Jnr (British)**  
*English Farmstead With Horses & Farm Animals*  
oil on canvas, 61cm x 90cm  
\$1,500 - \$2,500
- 314**  
**John Hamilton Glass (Scottish)**  
*Pair Scottish Farm Scenes C1900*  
watercolours, 34.5 x 49.5cm  
\$400 - \$600
- 315**  
**Hans Lenteman (1876-1953)**  
*Still Life Vase of Flowers*  
oil on canvas, signed (lower left) , 58 x 78cm  
\$350 - \$700
- 316**  
**Unknown European**  
*Rustic Dutch Farmstead*  
oil on canvas, 49 x 40cm  
\$180 - \$300
- 317**  
**William Groeneveld**  
*Dutch Still Life*  
oil on canvas board, signed and dated 1909 (lower right), 38.5 x 53cm  
\$100 - \$300
- 318**  
**C19th European**  
*Coastal Study with Fishing Boats & Windmills*  
oil on canvas, 38 x 52cm  
\$260 - \$400
- 319**  
**David Deuchar (Scotland 1743-1808)**  
*(After Rembrandt) Beggar Woman Leaning on Stick*  
etching, 7 x 5cm  
\$100 - \$200
- 320**  
**After William Hogarth**  
*Sancho At The Feast Starved By His Physician*  
monochrome engraving by T Cook, published in 1802 by G & J Robinson, London, 29 x 32cm  
\$100 - \$200
- 321**  
**After William Hogarth**  
*Strolling Players*  
monochrome engraving by T Cook, 41 x 55cm  
\$160 - \$280
- 322**  
**After William Hogarth**  
*O The Roast Beef Of Old England etc*  
monochrome engraving by T Cook, 37 x 45cm  
\$140 - \$260
- 323**  
**After William Hogarth**  
*Mr Garrick in the Character of Richard the III*  
monochrome engraving by T Cook, 39 x 51cm  
\$140 - \$260
- 324**  
**After George Cruikshank**  
*The Worship of Bacchus All The Drinking Customs Of Society*  
monochrome engraving printed by R Holdgate, published 20th June 1864 by William Tweedie, The Strand, London, arched  
67 x 107cm  
\$160 - \$300
- 325**  
**1897 Monochrome Facsimile Prospectus Panorama of London**  
published by G J Browne of Melbourne after the original in 1647 by Cornelius Danckers  
49 x 241cm  
\$500 - \$1,000
- 326**  
**C17th Map Episcopatus Dunelmensis (Durham) by Robert Morden**  
hand coloured with title vignette upper left, c1695, 36 x 42cm  
\$140 - \$260
- 327**  
**C17th Map Dunelmensis (Durham) by Saxton**  
hand coloured with title (upper left), 29 x 35cm  
\$140 - \$280
- 328**  
**C17th Map Of Huntingdonshire by Jansson**  
hand coloured with decorative figural vignette lower left, two coat of arms and heraldic shields , 39 x 49cm  
\$200 - \$400





313



314



315



318



308



309



338



312

**329**  
**C16th Map Dunelmensis (Northumbrie, Westmorlandie, Cumberlandie) c1576**  
 hand coloured, engraved by Augustine Ryther for Saxtons County Atlas of 1579  
 38 x 49cm  
 \$200 - \$400

**330**  
**William Ferris Browne**  
*The Union Steam Co SS Tarawera Steaming Into Milford Sound*  
 watercolour heightened with white, signed & inscribed with title (lower edge) , 21 x 33.5cm  
 \$140 - \$280

**331**  
**Two C18th Engravings From Cooks Voyages & Chart Of Cook Strait (3)**  
 A Warrior of New Zealand in the South Pacific Ocean and Representation of A War Canoe of New Zealand, with a View of Gable End Foreland, together with A Chart of Cook Strait  
 \$160 - \$300

**332**  
**C18th Bookplate Print of Waka Huia (Treasure Boxes)**  
 Plate 15 from John Hawkesworths An Account Of The Voyages undertaken by the order of His Present Majesty for making discoveries in the Southern Hemisphere  
 \$100 - \$200

**333**  
**L Cook**  
*Hand Coloured Photograph of Hon. R J Seddon Last Cabinet*  
 in an oak frame, c1906, comprising from left to right, Charles Mills, Thomas Duncan, James McGowan, Sir Joseph Ward, R J Seddon, William Hall-Jones, Albert Pitt, Sir James Carroll & Mahuta Te Wherowhero  
 30 x 30cm overall  
 \$100 - \$200

**334**  
**L Maltby**  
*S.S Runic*  
 oil on canvas, signed (lower right) , 41 x 50cm (restored)  
 \$140 - \$260

**335**  
**Frank Short (After)**  
*Noon On The Zuider Zee*  
 bookplate etching together with a print of Wellington Harbour by Avon Fine Arts (of sizes)  
 \$50 - \$100

**336**  
**Four Baxter Prints A Le Blond Print & Two Mezzotint Portrait Prints**  
 comprising Bala Lake, North Wales, Cathedral in Normandy, two larger oval landscape studies, Le Blond print "Please Remember The Grotto" and two mezzotint portrait prints after Gainsborough  
 \$100 - \$200

**337**  
**Large Baxter Print**  
*The Mountain Stream Indians Reposing*  
 printed by George Baxter 1856, 36.5 x 26cm together with hand-coloured lithograph after J G Keulemans, "Heteralocha Acutirostris"  
 \$100 - \$200

**338**  
**C19th Neopolitan**  
*Grand Tour Gouache Pompeii Ruins*  
 an extensive river landscape with two figures in the foreground and four ruins beyond, rounded corners, 29 x 44cm  
 \$400 - \$700

**339**  
**Jan Kagie**  
*Schipluiden*  
 watercolour, signed & inscribed with title (lower right), 28 x 51cm  
 \$150 - \$300

**340**  
**A A Prout**  
*College Street York*  
 watercolour, signed (lower right) , 39.5 x 29.5cm  
 \$100 - \$200

**341**  
**Early Victorian Lithograph of Mr Mitchell As The Wandering Minstrel**  
 hand coloured c1840, with related ink inscription to the lower edge, 34 x 26cm  
 \$60 - \$120

342

**Italian**

*A View In Rome*

watercolour, indistinctly signed, together with two small unframed English watercolours, Derwentwater and a rustic cottage (3)  
\$60 - \$120

343

**Assorted Victorian Watercolours (5)**

including Hay Stacks at Dusk variously signed & sized  
\$40 - \$80

344

**Assorted C19th Etchings & Lithographs (6)**

of sizes  
\$40 - \$80

345

**Assorted C19th Engravings & Lithographs**

etc (7)  
of sizes  
\$40 - \$80

346

**Pair Edwardian Feather Bird Pictures**

with watercolour background in oak frames with gilded floral borders  
\$100 - \$200

347

**Three Japanese Woodblock Prints of Geishas**

in simulated ebonised frames (some fading)  
\$160 - \$300

348

**Momoyama Period (1573-1615)**

*Woodblock of Samurai*

reputedly from the collection of the Duke of Northumberland, reduced from a larger print showing the head of the Samurai and seal mark beneath  
\$100 - \$200

349

**Large Antique Chinese Scroll Portrait of Guanyin**

seated holding a ruyi sceptre with foo dog at her feet, watercolour & gouache on paper 200 x 96.5cm (some faults)  
\$1,500 - \$2,500

350

**Qing Dynasty Ancestor Scroll Portrait of an Official**

Seated in hieratic posture on a wooden chair, wearing an richly ornamental court dress, the coat with a buzi or Mandarin square featuring a white bird denoting an official ranked officer, 110cm x 66.5cm  
\$1,000 - \$2,000

351

**Large C19th Mughal School Study Maharaja and Attendants**

a courtyard scene with young Maharaja and attendants within floral border, gouache on paper, 70 x 164cm  
\$600 - \$1,200

352

**Antique Moghul School Painting**

depicting a landscape with Maharaja and attendants in a courtyard, text above and below, 23 x 12cm  
\$100 - \$200

353

**Moghul School "Majnun In Chains"**

after Mir Sayyid Ali, gouache on paper, reference Islamic Art by David Talbot Rice, Thames & Hudson, London 1965  
\$100 - \$200

354

**Antique Myanmar (Burma) Painting**

with rows of figures and animals on a dark red ground, 48 x 70cm  
\$100 - \$200

355

**Two Framed Chinese Silk Embroideries & Japanese Silk Embroidery**

one depicting the hundred boys, the other a roundel figure and foo dogs, of sizes together with Japanese Embroidered Silk Picture, depicting a pagoda in a wood  
\$100 - \$200

356

**Framed C19th German Gross Point**

**Tapestry** depicting a lady with a basket on her head, in a moulded giltwood frame, 89 x 68cm overall  
\$80 - \$160

357

**George Frederic Watts (1817-1904)**

*Diana & Endymion*

Arts & Crafts Copper Framed Print inscribed with title & signed (lower left)  
93 x 92cm  
\$1,500 - \$2,500



349



347



353

## FURNITURE

- 358**  
**Arts & Crafts Stained Pewter Oval Wall Mirror** with bevelled plate the simulated copper border embossed with sea life and shells and inset small green cabochons, 72 cm by 53  
\$200 - \$400
- 359**  
**NZ Native Timbers Parquetry Inlaid Miniature Chest** with shaped gallery top with cruciform inlays, open shelf and sides with starburst inlay, 2 short and 2 long drawers  
\$600 - \$1,000
- 360**  
**Interesting & Rare Vintage NZ Hand Painted Bus Destination Scroll** painted in black and white featuring numerous towns and cities on state highways, 1,2, & 3, beginning with Auckland-Rotorua  
\$1,000 - \$2,000
- 361**  
**Early Painted Metal Wellington Street Sign Palliser Rd**  
\$100 - \$200
- 362**  
**Early Painted Metal Wellington Street Sign** Victoria 210 - 172  
\$100 - \$200
- 0363**  
**Victorian Glazed Taxidermy Display** five small birds 81 width  
\$200 - \$400
- 364**  
**Victorian Glazed Taxidermy Display** four ducks 70cm width  
\$300 - \$500
- 365**  
**Victorian Glazed Taxidermy Display** ducks, parrots and small birds 70cm width  
\$300 - \$500
- 366**  
**Chippendale Style Mahogany Side Chair** pierced vase shape back splat  
\$200 - \$400
- 367**  
**Set Six Late C19th French Walnut Dining Chairs** leaf decorated top rails and fluted uprights  
\$300 - \$600
- 368**  
**Regency Style Mahogany Triple Pillar Dining Table** 'D' ends with two leaves seating ten  
\$400 - \$800
- 369**  
**Set Eight WmIV Mahogany Dining Chairs and Extending Table** chairs with leaf carved top rails, grape and scroll splats, 'D' end pedestal table with single leaf seating six  
\$1,000 - \$1,500
- 370**  
**Edwardian Oak Bookcase with Set Historians History of the World** 25 volumes  
\$300 - \$500
- 371**  
**Pair French Salon Balloon Back Side Chairs** on fluted tapering legs  
\$200 - \$300
- 372**  
**Regency Mahogany Drop-Leaf Side Table** single drawer on tapering legs, 78cm width extended  
\$350 - \$500
- 373**  
**Victorian Mahogany Butlers Tray on Folding Stand** 96cm height  
\$400 - \$800
- 374**  
**Victorian Mahogany Cabinet Bookcase** glazed top on two flame mahogany panelled door base, 234 x 122cm  
\$600 - \$1,000
- 375**  
**Victorian Walnut Open Bookcase** three adjustable shelves on box base, 139 x 144cm  
\$600 - \$1,000
- 376**  
**Victorian Mahogany Torchere** leaf decorated spiral column on tripod base  
\$200 - \$400
- 377**  
**French Painted Corner Cupboard** single door decorated with fruit, 93 x 66cm  
\$300 - \$600
- 378**  
**French Painted Rectangular Side Table,** two frieze drawers on square tapering legs the top painted with fruit and flowers, 140 x 81cm  
\$400 - \$800
- 379**  
**Victorian Painted Welsh Dresser** traditional form with plate rack on two drawer, two cupboard base, 205 x 1505cm  
\$800 - \$1,200
- 380**  
**Geo III Oak Hanging Corner Cupboard** shaped shelved enclosed by astragal glazed panel door, 89 x 68cm  
\$350 - \$500
- 381**  
**Pair Plaster Classical Busts** 50cm  
\$140 - \$280
- 382**  
**Vintage Ewbank Empire Carpet Sweeper**  
\$30 - \$60
- 383**  
**Geo III Mahogany Oblong Snap Top Supper Table** on ringed vase shaped column and scroll legs  
\$300 - \$500
- 384**  
**Late C19th French Provincial Oak Settee** studded camel back on shaped stretchers, 152 length  
\$400 - \$800
- 385**  
**Set Eight Victorian Elm Windsor Chairs** traditional wheel and stick backs  
\$800 - \$1,400
- 386**  
**Late C19th French Provincial Fruitwood Farmhouse Table** Rectangular plank top and squared tapering legs, 210 x 80 x 73cm  
\$800 - \$1,500
- 387**  
**Regency Oak Circular Snap Top Wine Table** baluster column on tripod  
\$300 - \$500
- 388**  
**Italian Pietra Dura Octagonal Side Table** semi-precious hardstone inlays of birds, shells and foliage on ebonised legs, 42cm dia  
\$400 - \$800
- 389**  
**Victorian Walnut Wine Cooler** sarcophagus form with applied shell and scroll mouldings on cast brass lions paw feet, lid with veneer faults 56cm length  
\$200 - \$500
- 390**  
**Set Six Regency Rosewood Side Chairs** scroll decorated top rails and splats, on sabre legs with cane seats  
\$1,000 - \$1,500
- 391**  
**Geo III Oak Oblong Side Table** single frieze drawer on square tapering legs 114cm length  
\$400 - \$800
- 392**  
**Early C18th Oak Open Arm Chair** floral and leaf carved back panel and barley twist uprights and stretchers  
\$240 - \$400



369



443



416



390



385



407



394



444

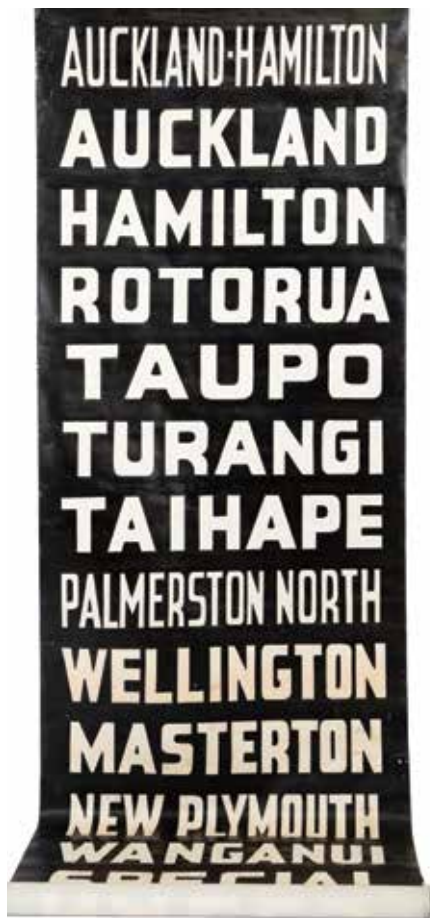


447



435

- 393**  
**Victorian Stained Oak Open Arm Chair**  
Elizabethan style with caned back and seat  
\$240 - \$400
- 394**  
**Edwardian Mahogany Chinese Chippendale Style Collectors Cabinet** top with four glazed doors, the breakfront base with three drawers, central cupboard with 18 graduated specimen drawers, 186 x 200cm  
\$1,000 - \$2,000
- 395**  
**Louis XIV Style Walnut Marquetry Ormolu Bracket Clock on Stand** high rococo style dial with white roman numerals, glazed front to stand 190cm height  
\$1,200 - \$2,000
- 396**  
**Regency Mahogany Breakfront Sideboard** central three drawers flanked by curved drawer sides on fluted supports, 214cm length  
\$1,800 - \$2,500
- 397**  
**Mahogany Extension Dining Table and Ten Dining Chairs** Regency style 'D' end two leaf extension table on twin pedestals with Victorian balloon back dining chairs on turned front legs, table 268 x 106cm  
\$1,600 - \$2,500
- 398**  
**Victorian Burr Walnut & Marquetry Oval Side Table** turned and carved support and stretcher, 91 x 59cm oval  
\$200 - \$500
- 399**  
**Regency Chinoiserie Style Quartetto Nest of Tables** all red lacquer with painted decorations on lyre side supports  
\$350 - \$600
- 400**  
**Victorian Ebonized Three Tier Rotating Library Table** circular marble top on two galleried base shelves on slightly concave platform base all with ormolu mounts, 52cm dia  
\$800 - \$1,500
- 401**  
**Victorian Walnut & Ebonised Glazed Pier Cabinet** single door, 101 x 76cm  
\$300 - \$500
- 402**  
**WmIV Mahogany Framed Library Chair** scrolling open arms on turned front supports with buttoned back upholstery  
\$300 - \$500
- 403**  
**Victorian Walnut Framed Nursing Chair** cabriole front supports  
\$200 - \$300
- 404**  
**Geo III Oak Open Arm Chair** four vertical splats on square tapering legs  
\$140 - \$240
- 405**  
**C17th Oak Coffey** simple plank construction with original iron hinges and lock plate on later feet 125 length  
\$400 - \$800
- 406**  
**Small C17th Oak Coffey** later Victorian carving to the front 103cm length  
\$500 - \$800
- 407**  
**Geo I Oak Country Made Open Arm Chair** with yoke top rail and solid vase shape splat  
\$300 - \$500
- 408**  
**Antique Oak Bench/Stool** rectangular plank top on four leg base reconstruction incorporating period timbers 106cm length  
\$200 - \$400
- 409**  
**C18th Oak Pig Bench** traditional form on four angular legs, 199cm length  
\$400 - \$800
- 410**  
**Early C18th Oak Bible Box** simple sloped form with iron hinges incised initials and date 1748 on later stand 79cm length  
\$300 - \$500
- 411**  
**Early C18th Oak Gate Drop Leaf Table** baluster legs with plain stretchers, 140cm extended  
\$400 - \$800
- 412**  
**Set Four C19th Beech Ladder Back Side Chairs** rush seats on turned legs and stretchers  
\$200 - \$400
- 413**  
**Pair Victorian Slender Fruitwood Benches** D-shaped ends on twin supports 195cm length  
\$300 - \$600
- 414**  
**Two Victorian Pine Benches** of simple construction, 188cm lengths  
\$200 - \$400
- 415**  
**Victorian Oak and Pine Top Farmhouse Table** traditional rectangular form on square tapering legs, 201cm  
\$400 - \$800
- 416**  
**Edwardian Mahogany Sheraton Revival Armchair** inlaid top rail and eleven vertical back splats on square tapering legs  
\$160 - \$300
- 417**  
**Oak Arts & Crafts Foot Stool** embossed and studded leather top  
\$100 - \$200
- 418**  
**Regency Mahogany Pembroke Table** traditional form on ringed tapering legs  
\$240 - \$360
- 419**  
**Regency Mahogany Pembroke Dining Table** traditional drop-leaves on tapering legs 130cm extended  
\$240 - \$400
- 420**  
**Victorian Burr Walnut Canterbury What-Not** mirror top and four fretwork division below, 80cm length  
\$350 - \$500
- 421**  
**American Federal Period Mahogany Bureau on Stand** brass gallery top, long drawer on stand with drawer, tapering legs and pad feet, 70cm  
\$800 - \$1,200
- 422**  
**Wm IV Mahogany Bow Front Chest** two short and three long graduated drawers (faults), 99.5 x 103 x 48cm  
\$350 - \$600
- 423**  
**Regency Mahogany Flat Front Chest** two short and three long drawers, 105 x 105 x 48cm  
\$350 - \$500
- 424**  
**Pair NZ Colonial Kauri Flat Front Chests** two short and two long drawers on turned feet with brass pear-drop handles 94 x 91 x 52cm  
\$800 - \$1,400
- 425**  
**Victorian Mahogany Circular Snap Top Breakfast Table** bulbous column and scroll legs, 130cm dia  
\$300 - \$600
- 426**  
**Reeded Beech Torchere** Art Nouveau tile inset, 106cm  
\$60 - \$140
- 427**  
**C19th Country Pine Dough Trough** 128cm length  
\$100 - \$200



360



445

**428**  
**Victorian Ex-Hannah's Shoe Factory Four Tier Shoe Rack Trolley** slatted pine shelves with cast iron framing 132 x 136 x 37cm  
 \$1,000 - \$2,000

**429**  
**Pair French Beech Salon Chairs** floral marquetry vase shape splats  
 \$300 - \$500

**430**  
**Regency Mahogany Bow Front Side Table** two frieze drawers on ringed tapering legs 98cm  
 \$360 - \$500

**431**  
**Good Victorian Mahogany Extension Dining Table** 'D'-ended on baluster legs with two leaves seating eight to ten 216 x 124 (no winder)  
 \$600 - \$1,000

**432**  
**Composed Set Six Wm IV Mahogany Dining Chairs** plain top rails and splats on tapering legs comprising five singles and associated carver  
 \$250 - \$500

**433**  
**Victorian Mahogany Flat Front Chest** two short and three long drawers 108 x 97 x 46cm  
 \$200 - \$500

**434**  
**NZ Colonial Rewa Rewa and Kauri Flat Front Chest** two short and three long graduated drawers on box base 105 x 107 x 50  
 \$700 - \$1,200

**435**  
**French Art Nouveau Walnut Sideboard** in the style of Louis Majorelle, glazed upper cabinet centred by embossed brass panel, matching outset corners, base with green marble top further brass panels, two drawers and cupboards enclosed by four panel doors 214 x 186 x 54cm  
 \$3,000 - \$5,000

**436**  
**Japanese Six Panel Folding Screen** decorated with gilded figures, dragon and pagodas, 183cm height  
 \$800 - \$1,500

**437**  
**Antique Chinese Wooden & Iron Bound Water Bucket** 58cm height  
 \$200 - \$300

**438**  
**Antique Chinese Artist Box** iron fittings 60cm  
 \$100 - \$200

**439**  
**Early C18th Oak Bible Box** plain oblong form with iron lock plate 79cm  
 \$200 - \$400

**440**  
**Victorian Pine and Cast Iron Scaffold** four steps to each side, top length 130cm  
 \$200 - \$500

**441**  
**NZ Colonial Kauri Three Tier Buffet** plain galleried shelves and turned supports 102cm  
 \$160 - \$300

**442**  
**Set Six Mahogany Balloon Back Dining Chairs** turned and fluted front legs  
 \$200 - \$400

**443**  
**Late Victorian Walnut Nursing Chair** shepherds crook open arms on leaf and scroll legs  
 \$200 - \$400

**444**  
**Edwardian Mahogany Secretaire Bookcase** glazed top with dentilled and blind fretted cornice, fitted drawer slide on cupboard base 236 x 122 x 58cm  
 \$800 - \$1,500

**445**  
**Modern Designer Cone Lamp by Tom Dixon** ex ECC design lighting  
 \$1,000 - \$2,000

**446**  
**Pair Kartell Louis Ghost Chairs by Philippe Starck**  
 \$400 - \$800

**447**  
**Regency Mahogany Two Stage Corner Cupboard** top with glazed astragal doors cupboard below on bracket feet, 216 x 155 x 64cm  
 \$800 - \$1,500

**448**  
**Victorian Mahogany Roll-top Pedestal Desk** interior with leather top and compartments three drawers to each pedestal, 153cm  
 \$700 - \$1,200

**449**  
**Victorian Chaise Longue** on ebonized legs with cream floral damask upholstery  
 \$200 - \$500





436



428

**450**  
**Late Victorian Cottage Writing Desk**  
**Bookcase** two glazed panel doors above three drawer roll desk on turned front support, two cupboard base (fault to one leg)  
 \$300 - \$500

**451**  
**Regency Mahogany Bow Front Sideboard**  
 with low gallery back, three frieze drawers on reeded legs  
 \$800 - \$1,200

**452**  
**Georgian Longcase Clock** with arched painted dial in an oak case, the fretwork mount centred by a brass orb finial  
 \$800 - \$1,200

**453**  
**Victorian Mahogany Serpentine Console**  
**Table** of slender proportions on heavy cabriole legs  
 \$300 - \$600

**454**  
**Late Victorian Brass Fire Fender**  
 \$50 - \$100

**455**  
**WmIV Mahogany Dressing Table** toilet swing mirror on plain column supports with matching base columns, seven small frieze drawers with middle writing slide  
 \$600 - \$1,200

**456**  
**Caucasian Tribal Persian Rug** large central medallion red tones, wool on cotton  
 248 x 142cm  
 \$300 - \$600

**457**  
**Caucasian Tribal Persian Rug** triple medallion field, red tones with geometric gold order, wool on cotton  
 200 x 124cm  
 \$200 - \$400

**458**  
**Persian Rug** all mixed geometric patterns in light brown tones, wool on cotton  
 186 x 136cm  
 \$200 - \$400

**459**  
**Persian Bokhara Rug** traditional design in rich red tones, wool on wool  
 178 x 128cm  
 \$300 - \$600

**460**  
**Persian Rug** the field all with peacock tail feather motif, faded tones on ivory ground, wool on cotton  
 232 x 165cm  
 \$300 - \$600

**461**  
**Turkish Kilim Rug** four central medallions all with geometric patterns, red tones, wool on wool  
 222 x 266cm  
 \$200 - \$400

**462**  
**Large Persian Rug** all garden floral pattern, faded ivory tones, wool on cotton,  
 320 x 217cm  
 \$300 - \$500

**463**  
**Turkoman Persian Rug** tradition field of multiple medallions, washed red ground, wool on cotton  
 186 x 136cm  
 \$200 - \$400

**464**  
**Turkish Tribal Rug** triple medallion in tradition red tones, wool on wool  
 214 x 173cm  
 \$200 - \$400

**465**  
**All Silk Qum Rug** finely woven, central medallion with floral trailing field and borders, pale salmon pink and ivory tones  
 291 x 204cm  
 \$3,000 - \$5,000





**SESSION THREE**

**FINE & ESTATE JEWELLERY**

**Thursday 25th March**

**4pm start**

**Lot 500 - 788**

- 500**  
**18ct & Platinum 13stone Emerald and Diamond Cluster Ring** central rub-over step cut square bright green emerald with square surround of single cut diamonds  
 Historical Valuation Available  
 \$400 - \$800
- 501**  
**18ct 21stone Emerald and Diamond Cluster Ring** central rub-over bright green octagonal emerald cut emerald with pave set surround of old rose cut diamonds  
 '15 replacement \$7150  
 \$2,000 - \$3,000
- 502**  
**All Platinum Solitaire Diamond Ring** six claw set round brilliant approx 0.53cts (one claw to repair) together with all platinum nine stone diamond eternity band  
 Historical Valuation Available  
 \$1,500 - \$2,500
- 503**  
**18ct White Gold Solitaire Diamond Ring** modern four corner claw set princess cut approx 0.72cts with 14 round brilliant cut shoulder diamonds  
 '20 replacement \$11,500  
 \$3,200 - \$3,800
- 504**  
**18ct Solitaire Diamond Ring** raised four corner claw set princess cut approx 1cts with six shoulder diamonds  
 '00 replacement \$14,782  
 \$5,000 - \$6,000
- 505**  
**18ct White Gold Solitaire Diamond Ring** raised four corner claw set princess cut approx 0.84cts with fancy platform and shoulders all pave set with round and baguette cut diamonds approx 0.28cts tdw  
 \$2,000 - \$3,000
- 506**  
**18ct 35stone Sapphire and Diamond Cluster Ring** oval mixed cut bright blue natural sapphire approx 14.87cts with surround of brilliant cut diamonds and triple band shoulder diamonds approx 2.09cts tdw  
 '21 replacement \$115,000  
 \$40,000 - \$45,000
- 507**  
**18ct White Gold & Platinum Eleven Stone Emerald & Diamond Cluster Ring** slightly raised cage claw set central square emerald cut bright green emerald 8mm x 8.5mm with surround brilliant cut diamonds approx 2.50cts tdw  
 '20 replacement \$48,500  
 \$16,000 - \$20,000
- 508**  
**18ct 15stone Sapphire and Diamond Cluster Ring** cushion mixed cut natural dark blue/green sapphire approx 5.87cts with brilliant cut diamonds surround approx 0.99cts tdw  
 '21 replacement \$14,000  
 \$4,500 - \$6,000
- 509**  
**All Platinum 13stone Star Sapphire and Diamond Cluster Ring** central natural oval high cabochon fine violet/blue star sapphire approx 7.324cts with surround of pear shape brilliant cut diamonds approx 1.50cts tdw  
 '20 replacement \$32,000  
 \$8,000 - \$12,000
- 510**  
**14ct Solitaire Diamond Ring** raised four claw set round brilliant cut approx 2.08cts with 16 shoulder diamonds  
 '20 Australian Gemological Valuation Available on Request  
 \$6,000 - \$10,000
- 511**  
**All Platinum Art Deco Diamond Cluster Ring** rectangular platform with central marquise brilliant cut diamond approx 0.54cts with pave surround of 18 old mine cut diamonds approx 1.19cts. maker O B Allen, original box  
 '17 replacement \$9,250  
 Note: Oscar Bruce Allan (Canadian 1878-1966) opened his first jewellery store in 1904  
 \$3,000 - \$4,000
- 512**  
**Period Art Deco 18ct White Gold Platinum Diamond Bracelet** fancy rectangular hinged panels all pave set with old European cut diamonds, central diamond 0.40cts total of 62 diamonds 2.22cts tdw  
 '20 replacement \$16,400  
 \$6,000 - \$8,000
- 513**  
**Fine Period Art Deco All Platinum 242 Stone Diamond Bracelet** articulated box set old European diamonds with central and two side panels featuring approx 1.25ct and 0.60cts x2 with approx 12.58cts tdw 18.50cm length  
 '21 replacement \$65,000  
 \$40,000 - \$50,000
- 514**  
**All Platinum 723stone Ruby and Diamond Necklace** hinged link graduated clusters of 35 oval cut dark red rubies pave surrounded with round brilliant cut diamonds approx. 54.33cts tsw and 7.66cts tdw  
 '20 Australian Gemological Valuation Available on Request  
 \$30,000 - \$50,000
- 515**  
**All Platinum Ruby and Diamond Pendant Drop Earrings** each of hinged linked three clusters oval cut dark red rubies pave set surrounded by 48 round brilliant cut diamonds, pierced  
 5.25cts tsw and 1.08cts tdw  
 '20 Australian Gemological Valuation Available on Request  
 \$3,000 - \$4,500
- 516**  
**All Platinum Ruby and Diamond Bracelet** all articulated bead claw set 392 round cut rubies approx 29.54ct tsw, with 98 round brilliant cut diamonds approx 5.56ct tdw 17.5cm length  
 '20 Australian Gemological Valuation Available on Request  
 \$20,000 - \$30,000
- 517**  
**18ct White Gold 104stone Diamond Tennis Style Bracelet** each hinged square panel pave set with four princess cut diamonds approx 3.83cts tdw  
 '11 replacement \$14,000  
 \$4,500 - \$5,500
- 518**  
**18ct White Gold 182stone Diamond Bangle** 13 floret clusters mounted on three wire bound bands approx 1.50cts tdw  
 '21 replacement \$9,700  
 \$2,800 - \$3,200
- 519**  
**18ct White Gold 15stone Emerald Hinged Snap Bangle** 15 oval cut vivid bluish-green emeralds approx 17.10cts, with 32 round brilliant cut diamonds spacers  
 '20 Australian Gemological Valuation Available on Request  
 \$14,000 - \$18,000
- 520**  
**18ct White Gold 1123stone Diamond Pendant Necklace** detachable pendant of marquise shape framed nine floret clusters on matching slightly graduated necklace with the last six links reversed for back of neck all pave set on wire cage backs approx 12.5cts tdw  
 '20 replacement \$45,750  
 \$12,000 - \$16,000
- 521**  
**18ct White Gold 264stone Diamond Dress Ring** large disc platform (27mm dia) of central floret cluster framed with seven pave set rows, raised petal back approx 2.47cts tdw  
 '19 replacement \$10,800  
 \$2,800 - \$3,400



500



501



502



503



504



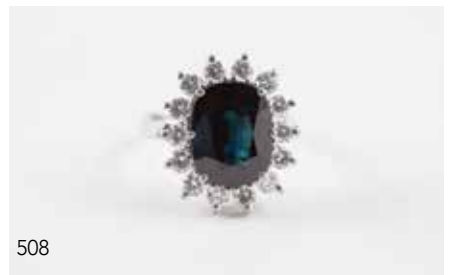
505



506



507



508



509



510



511



521



526



531



532



533



542

- 522**  
**14ct White Gold 156stone Diamond Pendant/Necklace** heart bow design with heart drop articulated claw all pave set with rail link back neck chain approx 3.16cts tdw, 42cm length  
 '20 replacement \$13,500  
 \$4,000 - \$6,000
- 523**  
**14ct White Gold Tanzanite and Diamond Pendant** cage claw set heart cut violet blue tanzanite approx 33.33cts, with 45 round brilliant cut diamonds surrounding approx 1.37cts tdw on trace link chain set with six diamonds  
 '20 Australian Gemmological Valuation Available on Request  
 \$16,000 - \$20,000
- 524**  
**Pair 14ct White Gold Tanzanite and Diamond Earrings** each of heart cut violet blue tanzanite with surround of 26 round brilliant cut diamonds, single pointer diamond and five diamonds pave set to the hook, pierced. 17.26ct tsw and 1.38cts tdw  
 '20 Australian Gemmological Valuation Available on Request  
 \$10,000 - \$14,000
- 524a**  
**14ct Topaz and Diamond Necklace** single rectangular mixed cut topaz approx 10.90cts with surround of diamonds and pave set single cuts two articulated suspended mounts on fine trace link chain  
 '20 replacement \$7,100  
 \$2,500 - \$3,000
- 525**  
**14ct White Gold Morganite and Diamond Pendant** wire scroll gallery four claw set oval cut peach pink morganite approx 88.20cts with 48 round brilliant cut diamonds surrounding approx 2.23cts tdw on fine trace link chain set with six diamonds  
 '20 Australian Gemmological Valuation Available on Request  
 \$6,000 - \$10,000
- 526**  
**18ct White Gold 101stone Pink Tourmaline and Diamond Cluster Dress Ring** cross-over design three oval mixed cut tourmalines all with pave set round brilliant cut diamonds and four pear cut tourmalines, approx 2.44cts tsw and 0.49cts tdw  
 '21 replacement \$6,750  
 \$1,600 - \$2,000
- 527**  
**18ct Yellow & White Gold 17stone Boulder Opal & Diamond Pendant** large freeform squarish Queensland boulder opal dark violet green flash opal, two tone scroll frame with scattered diamonds  
 '10 replacement AU\$4,000  
 \$4,000 - \$5,000
- 528**  
**14ct Opal and Diamond Pendant** single natural form cabochon fiery white opal approx 22.03cts with 44 round brilliant cut diamonds surrounding approx 0.885ct tdw  
 '20 Australian Gemmological Valuation Available on Request  
 \$4,000 - \$6,000
- 529**  
**18ct White Gold Opal and Diamond Pendant** natural form cabochon white opal approx 7cts with rub-over surround pave set with diamonds, single round brilliant cut diamond head approx 0.27cts and diamond pave set hanger  
 '17 replacement \$6,575  
 \$1,800 - \$2,200
- 530**  
**All Platinum Lightning Ridge Black Opal & Diamond Brooch/Pendant** central freeform blue-green flash opal approx 17.44cts with loop scroll frame all set with 41 marquise and round brilliant cut diamonds approx 1.95cts tdw  
 '20 replacement \$30,000  
 \$10,000 - \$15,000
- 531**  
**14ct White Gold Single Aquamarine Dress Ring** light blue/green gem rectangular cushion checker-board cut approx 20.50cts with frame surrounding and fancy split shoulders all pave set with diamonds 88 approx 1.75cts tdw  
 '20 replacement \$12,900  
 \$5,000 - \$7,000
- 532**  
**All Platinum 65stone Opal and Diamond Cluster Ring** raised four claw set elongated oval cabochon oval with bright blue/green flash approx 6.82cts, wavy framed surround of baguette and brilliant cut diamonds approx 1.41cts tdw  
 \$4,000 - \$6,000
- 533**  
**14ct White Gold Single Aquamarine and Diamond Dress Ring** raised claw set oval mixed cut light blue aquamarine approx 4.30cts with six shoulder diamonds  
 '20 replacement \$6,000  
 \$2,000 - \$2,600
- 534**  
**18ct 42stone Diamond Pendant** all pave bead claw set round brilliant cut diamonds approx 1.29cts tdw  
 '14 replacement AU\$4,350  
 \$1,000 - \$1,500
- 535**  
**22ct Single Blue Zircon Pendant** approx 9.412cts bright blue rectangular gem four corner claw set the hanger set with two diamonds  
 '14 Replacement \$6,710  
 \$2,000 - \$2,500
- 536**  
**Fancy 14ct 437stone Diamond Necklace** all hinged link 12 oval panels, two marquise panels and 16 oval back panels all of star burst design set with native cut diamonds, ten pendant diamond drops approx 12.50cts tdw, 42cm length  
 '20 replacement \$30,000  
 \$6,000 - \$8,000
- 537**  
**14ct 346stone Fancy Diamond Bracelet** hinged link 16 marquise cut, light yellow diamonds approx 9.31cts tdw, each marquise diamond with surround of pave set diamonds, approx 1.81ct tdws  
 '20 Australian Gemmological Valuation Available on Request  
 \$10,000 - \$14,000
- 538**  
**14ct Rose Gold Diamond Cluster Stud Earrings** each of central round brilliant cut diamond surrounded by 14 diamonds, pierced. approx 2.19 tdw and approx 0.55cts tdw  
 '20 Australian Gemmological Valuation Available on Request  
 \$6,000 - \$8,000
- 539**  
**Pair 18ct & Platinum Emerald and Diamond Cluster Earrings** each of central pear cut bright green emerald with surround of 17 single cut diamonds on single round cut emerald head, pierced  
 '20 replacement \$5,200  
 \$1,500 - \$2,000
- 540**  
**Pair 22ct Moghul Diamond Pendants (to be mounted as earrings)** each of six pear shape faceted diamonds, rubover set floret cluster with central emerald, approx 2cts tdw  
 '16 replacement \$4,000  
 \$4,000 - \$5,000
- 541**  
**Pair 10ct Ruby & Diamond Spray Stud Earrings** each of modern design three central individual set diamonds surround with ribbon sprays of channel set with 33 rubies, pierced  
 '20 replacement \$3,500  
 \$1,200 - \$1,500
- 542**  
**14ct 67stone Fancy Diamond Cluster Ring** central cushion cut, light natural fancy yellow diamond approx 2.02cts with double frame halo style of 66 round brilliant cut diamonds 0.65ct tdw  
 '20 Australian Gemmological Valuation Available on Request  
 \$12,000 - \$15,000



514



520



523



515



538



524



525



522



524a



512



513



516



519



517



518



536



537



643





530



614



527



528



529



540



539



541



559



554



553



557



555



556

543

**18ct 15stone Sapphire & Diamond Cluster Ring** four claw oval mixed cut mid-blue sapphire approx 4.25cts with surround of round brilliant cut diamonds approx 1cts tdw with eight channel set shoulder sapphires '20 replacement \$15,900  
\$4,000 - \$6,000

544

**18ct White Gold 15stone Sapphire & Diamond Cluster Ring** raised claw set rectangular cushion cut mid-blue sapphire with diamond surround approx 0.73cts tdw, 2.14cts tsw  
'20 replacement \$12,900  
\$3,500 - \$5,000

545

**14ct 29stone Emerald and Diamond Cluster Ring** central, emerald cut, bluish-green emerald approx 6.84cts double 4-claw set, with 26 round brilliant cut diamonds surrounding and two shoulder diamonds approx 0.55cts tdw  
'20 Australian Gemmological Valuation Available on Request  
\$2,000 - \$3,000

546

**18ct Solitaire Diamond Ring** six claw set round brilliant cut approx 1.04cts  
'20 replacement \$16,800  
\$5,000 - \$6,000

547

**18ct Ten Stone Diamond Eternity Band** channel set round brilliant cuts approx 1.05cts tdw  
'20 replacement \$6,690  
\$1,600 - \$2,000

548

**14ct Solitaire Diamond Ring** raised six claw set marquise brilliant cut diamond approx 1.01cts  
'20 replacement \$6,000  
\$2,000 - \$2,600

549

**18ct Solitaire Diamond Ring** eight claw set round brilliant cut approx 0.68cts  
'16 replacement \$6,000  
\$1,800 - \$2,400

550

**18ct White Gold Solitaire Diamond Ring** modern raised four claw set round brilliant cut approx 0.38cts with pave set 14 shoulder diamonds  
\$800 - \$1,200

550a

**18ct Three Stone Diamond Bridge Ring** stepped and raised four corner claw set princess cut diamonds approx 0.50cts tdw  
'18 replacement \$3,900  
\$800 - \$1,400

551

**18ct 13stone Amethyst and Diamond Dress Ring** raised cage claw set emerald cut amethyst approx 3.815cts with twelve round brilliant cut shoulder diamonds approx 0.49cts tdw  
'18 replacement \$5,050  
\$1,200 - \$1,600

552

**9ct Single Large Amethyst Dress Ring** rub-over set oval mixed brilliant cut 20 x 14mm on wire twist frame  
Historical Valuation Available  
\$400 - \$800

553

**Andrew Grima Design 18ct Two Stone Tourmaline Ring c1967** rectangular step cut tourmalines corner claw set with dented frame, workshop mark slightly worn G&P  
\$3,000 - \$5,000

554

**Andrew Grima Design 18ct Tourmaline & Diamond Brooch** central large rectangular tourmaline with two shoulders of diamonds on abstract openwork textured gold wire frame, markers mark H J Co, indistinct hallmark  
\$5,000 - \$10,000

555

**18ct Yellow and White Gold Lily Flower Spray Brooch** central cluster on emerald with six diamond surround, split petals with textured finish and white gold overlay  
Historical Valuation Available  
\$800 - \$1,600

556

**18ct Yellow Flower Spray Brooch** central seven stone sapphire cluster with wire worked petals partly textured finishes  
Historical Valuation Available  
\$800 - \$1,400

557

**Mid C20th 14ct Jade Spray Brooch** sloping oval form claw set with 14 apple green jade cabochons on fancy textured frame design with leaves and stems (fault to one jade piece)  
'20 replacement \$4,200  
\$500 - \$800

558

**18ct Yellow & White Gold Enamelled Bug Brooch** blue/green enamelled wings with single large cultured pearl body, ruby eyes and diamond  
'20 replacement \$4,300  
\$1,000 - \$1,400

559

**Pair 18ct Ribbed Scroll Earrings** clip backs  
'20 replacement \$3,200  
\$500 - \$800

## NZ JEWELLERS

560

**James King (NZ) Late C19th Silver Gilt Brooch** oval form with detailed scene of mountain, fern trees and kiwi to the fore. Marked J King premises at Willis Street and 1891 as James King & Co Cuba St., Wgtn with two silver stamps lion passant and other. Note: Possible sample piece for brooches of the same design made in gold, sold Dunbar Sloane 14 July 2016 Lot J45 boxed brooch and earrings sold for \$103,000 inc BP and second unboxed set 22 March 2018 sold for \$137,000 inclusive  
\$3,000 - \$6,000

561

**Elsie Reeve (NZ 1885-1927) S/S Moonstone and Enamel Pendant** oval form with central mauve enamelled panel with surround of six moonstones and leaf work  
Note: This pendant is similar in style to a piece held in the collection of The Auckland Museum c.1920 with applied Reeve Mark. Miss Reeve was one of the first female professional jewellers in NZ working both in Wellington and Auckland.  
\$2,500 - \$3,500

562

**Edith Morris (NZ 1895-1965) S/S and Single Green Tourmaline Brooch** central oval cabochon gem with petal loop and scroll design frame, marked STG SIL and feathered arrow emblem  
\$1,500 - \$2,000

563

**Reuben Watts (NZ 1869-1940) Arts and Crafts Period Silver and Enamel Pendant** shield shape with central blue/green enamel panel, hammered finish with natural pearl drop. Impressed script mark, & marked silver  
\$1,500 - \$2,500

564

**Rare Cased Set Six Reuben Watts (NZ 1869-1940) S/S Teaspoons** with turquoise enamel tops, spiral stems and hand hammered bowls, script stamp Reuben Watts Stg Silver  
\$2,000 - \$4,000

565

**Reuben Watts (NZ 1869-1940) WWI Period Flying School Brooch** ferns and spread wings in red, white and blue enamel with attached WWI miniature War and Victory, stamped Sterling and Watts  
\$1,000 - \$1,500

566

**Jenny Patrick (NZ) Single Opal Ring** large natural form cabochon black opal on wide band with scroll and bead work  
\$600 - \$1,000



564



560



563



562



561

**567**  
**Single Strand Graduated Greenstone Bead Necklace** knotted 5 - 9mm beads with carved marine ivory Kowhai bloom pendant together with pair stud earrings  
 \$300 - \$500

**568**  
**NZ 9ct Paua Jewellery Suite** all 9ct gold mounted necklace of five paua panels with pendant on trace link chain, six rectangular paua panel bracelet, pair single panel earrings, pierced and ring  
 \$600 - \$1,000

**569**  
**Peter Minturn (NZ) Original Design S/S and Greenstone Panel Brooch** panel with rub-over modern pierced design frame  
 \$100 - \$200

**570**  
**Late C19th (15ct) Greenstone Stickpin** oval panel crown claw mounted  
 Provenance: belonged to Captain Richard John Spotswood Seddon, Richard Seddon, NZ Prime Minister's son  
 \$350 - \$500

**571**  
**14ct Yellow & White Gold 29stone Emerald and Diamond Dress Ring** raised central four claw set rectangular step cut mid green emerald approx 1.45cts on fancy shoulders set with princess and round brilliant cut diamonds approx 1.10cts tdw  
 '20 replacement \$8,900  
 \$2,400 - \$3,000

**572**  
**Pair 18ct Emerald and Diamond Panel Earrings** each of central row of five diamonds flanked with bands of 12 square cut emeralds, pierced  
 '20 replacement \$3,700  
 \$1,200 - \$1,600

**573**  
**18ct 19stone Diamond Bridge Ring** cage claw set three rows of round brilliant cut diamonds  
 \$1,200 - \$1,600

**574**  
**All Platinum Solitaire Diamond Ring and Band** modern four claw set princess cut approx 0.51cts with ten channel set shoulder diamonds with matching 15stone princess cut channel set band  
 '20 replacement \$8,770  
 \$2,800 - \$3,600

**575**  
**18ct White Gold Solitaire Diamond Ring & Band** raised six claw set round brilliant cut approx 0.50cts  
 '12 replacement \$5,900  
 with 18ct 14stone diamond curve band  
 \$1,800 - \$2,400

- 576**  
**18ct & Platinum Solitaire Diamond Ring** modern six claw set round brilliant cut approx 0.37cts '00 replacement \$3,900 \$1,000 - \$1,500
- 577**  
**18ct 30stone Diamond Bridge Ring** modern design of pave set 14 baguette cut diamonds edged with 16 round brilliant cuts approx 0.80cts tdw '18 replacement \$3,700 \$1,200 - \$1,600
- 578**  
**18ct White Gold 74stone Diamond Double Band Eternity Band** all channel set round brilliant cuts \$1,200 - \$1,600
- 579**  
**18ct & Platinum Three Stone Ruby and Diamond Ring** central oval mixed cut bright ruby approx 1.10cts with two round brilliant cut diamonds approx 0.44cts tdw with six single cut shoulder diamonds '20 replacement \$11,200 \$3,000 - \$4,000
- 580**  
**18ct White Gold 55stone Diamond Cluster Ring** modern design central four round brilliant cut diamonds with all pave set frame and shoulders approx 0.58cts tdw '20 replacement \$2,545 \$850 - \$1,200
- 581**  
**18ct White Gold Eleven Stone Diamond Fancy Ring** raised central round brilliant cut approx 0.35cts on double tier scroll gallery with petals to the sides \$600 - \$1,200
- 582**  
**14ct White Gold 53stone Sapphire and Diamond Cluster Ring** four claw set oval mixed cut medium blue sapphire approx 1.96cts, with 52 round brilliant cut diamonds surrounding, shoulder pointer diamonds and split shoulder all pave set '20 Australian Gemmological Valuation Available on Request \$1,200 - \$1,600
- 583**  
**18ct White Gold 39stone Ceylon Sapphire and Diamond Cluster Ring** raised four claw violet blue sapphire on modern scroll frame of baguette cut diamonds and channel set shoulder diamonds approx 1.20cts tdw, 1.78cts tsw '20 replacement \$9,200 \$3,000 - \$4,000
- 584**  
**18ct 47stone Sapphire and Diamond Dress Ring** central raised four claw set oval mid-blue sapphire on band all pave set with baguette and round brilliant cut diamonds approx 1cts tdw, 0.80cts tsw '20 replacement \$7,500 \$2,500 - \$3,000
- 585**  
**18ct Yellow & White Gold Eleven Stone Sapphire & Diamond Dress Ring** central oval deep blue sapphire with diamond surround on wide band with bamboo type rib rims '14 replacement AU\$3,430 \$1,000 - \$1,500
- 586**  
**14ct Solitaire Diamond Ring** six claw set round brilliant cut approx 0.70cts '20 replacement \$5,700 \$1,800 - \$2,400
- 587**  
**Two 18ct Rope and Wire Twist Pattern Bands** '20 replacement \$2,750 each \$1,400 - \$1,800
- 588**  
**18ct 23stone Opal and Diamond Cluster Ring** pear shape cabochon green/red flash opal approx 3.31cts with diamond set cross-over type frame/shoulders '20 replacement \$9,000 \$2,400 - \$3,000
- 589**  
**18ct Solitaire Diamond Ring** modern raised four corner claw set princess cut approx 0.34cts '11 retail \$2,800 \$600 - \$800
- 590**  
**14ct 25stone Aquamarine and Diamond Cluster Ring** raised cage claw set central oval cut medium blue aquamarine approx 7.04cts, with 24 round brilliant cut diamonds surrounding '20 Australian Gemmological Valuation Available on Request \$2,000 - \$3,000
- 591**  
**Pair 9ct Topaz and Pearl Pendant Drop Earrings** each of single emerald cut topaz with fresh water baroque pearl drop approx 11mm \$300 - \$600
- 592**  
**Five Strand Uniform and Graduated Cultured Pearl Necklace** four uniform strands with central strand slightly graduated 7mm - 9mm pearls 52, 57, 58, 64, 68 pearls on 14ct finely carved floret jade panel clasp studded with four rubies and six diamonds, 26 x 23cm rectangular \$4,000 - \$6,000
- 593**  
**Single Strand Uniform Opera Length Cultured Pearl Necklace** 114 8mm knotted pearls on s/s clasp 98cm length '14 replacement \$5,630 \$1,000 - \$1,400
- 594**  
**Single Strand Uniform Akoya Cultured Pearl Necklace** 55 knotted 7mm pearls on 9ct mabe pearl clasp '20 replacement \$7,995 \$1,200 - \$1,800
- 595**  
**Double Strand Uniform Cultured Pearl Bracelet** 48 6mm pearls with three gold spacers and 14ct pierced loop design clasp \$300 - \$600
- 596**  
**Ming Single Strand Uniform Akoya Pearl Necklace** 61 6mm pearls with central 9mm pearl on 14ct clasp 48cm length \$200 - \$400
- 597**  
**Single Strand Uniform Cultured Pearl Necklace** 64 6mm knotted pearls on .800 silver clasp with pair pearl stud earrings, pierced \$100 - \$200
- 598**  
**9ct Single Cultured Pearl Earrings** 6.5mm pearl on scroll platform, screw backs \$100 - \$200
- 599**  
**Pair Mikimoto 14ct Pearl Pendant Earrings** each of single 8mm baroque pearl drop on ribbon bow, screw backs \$300 - \$600
- 600**  
**Mikimoto Double Strand Graduated Cultured Pearl Necklace** 101 and 95 pearls 3.5mm to 7.5mm 54cm longest length with s/s monogrammed clasp, boxed \$600 - \$800
- 601**  
**Single Strand Uniform Cultured Pearl Necklace** 65 6mm pearls on s/s clasp 51cm length \$200 - \$400
- 602**  
**Single Strand Graduated Cultured Tahitian Pearl Necklace** 35 grey 8.5 - 11.6mm pearls on 9ct white gold ball clasp 36cm '20 replacement \$2,200 \$500 - \$800
- 603**  
**Fine Mikimoto Single Strand Uniform Cultured Pearl Necklace** 131 4mm pearls on monogrammed s/s clasp 61cm length \$300 - \$500



534



535



543



544



545



546



547



548



549



550



550a



551



552



571



572



573



574



575



576



577



578



579



580



582



583



584



585



586

- 604**  
**Vintage Single Strand Graduated Cultured Pearl Necklace** 51cm length with pair single cultured pearl stud earrings, pierced  
\$100 - \$200
- 605**  
**Mid C20th Single Strand Uniform Lapis Lazuli Bead Necklace** 56 11mm knotted lapis beads with dragon head pendant mount (no clasp) 74cm length  
\$1,000 - \$1,500
- 606**  
**Multi-Strand Uniform Lapis Lazuli Bead Necklace** four strands of 3mm beads supporting carved crescent pendant 46cm length  
\$100 - \$200
- 607**  
**Single Strand Uniform Chinese Jade Bead Necklace** 81 10mm beads 86cm length  
\$100 - \$300
- 608**  
**Single Strand Uniform Chinese Jade Bead Necklace** 58 7mm beads 47cm length together with jade bangle  
\$100 - \$300
- 609**  
**Single Strand Uniform Amethyst Bead Necklace** 43 9mm beads on 14ct clasp 48cm length  
\$100 - \$200
- 610**  
**Double Strand Slightly Graduated Italian Red Coral Bead Necklace** centrally mounted with 14ct gold bead spacers and single coral 14ct clasp 50cm length  
\$200 - \$400
- 611**  
**Early Victorian 15ct Amethyst and Diamond Snake Necklace** articulated neck chain with three oval mixed cut amethysts to the head each set with single rose cut diamond, ruby eyes with heart pedant set with single amethyst and diamond, reverse locket panel, 34cm length complete with fitted box  
\$4,000 - \$6,000
- 611a**  
**Edwardian 18ct and Silver Opal and Diamond Pendant** pear shape cabochon fiery opal approx 4.97cts on bow hanger set with central opal and pave set old mine cut diamonds to the ribbons on fine silver chain together with near matching pendant earrings each drop cluster of central round opal with surround of eleven diamonds on replacement 9ct stud hooks  
'21 replacement \$12,900  
\$3,000 - \$4,000
- 612**  
**Victorian 15ct Five Stone Amethyst Cross Pendant** oval mixed cut deep purple gems rub-over set with rope work frames  
'17 replacement \$4,000  
\$1,500 - \$2,000
- 613**  
**Victorian 15ct 12stone Garnet Brooch** gothic revival scroll frames supporting pear and mixed cut garnets with detachable matching pendant  
\$400 - \$600
- 613a**  
**9ct Single Large Citrine Brooch** oval mixed cut pale yellow citrine 32 x 24mm eight claw set with rope twist and scallop shape frame  
\$400 - \$800
- 614**  
**Art Deco 18ct White Gold Opal and Diamond Necklet** oval cabochon black opal approx 8.84cts with fancy diamond set shoulders on silver chain  
'20 NRV \$63,500  
\$10,000 - \$15,000
- 615**  
**Art Deco All Platinum Carved Jade Panel Ring** apple green jade with six single cut shoulder diamonds  
\$400 - \$600
- 616**  
**Pair Art Deco Pendant Drop Earrings** each in the form of a grape bunch in green glass bead mounted on silver  
\$200 - \$400
- 617**  
**Victorian 16ct Snake Link Type Muff Chain** with chain slider finely chased with flower head set with single ruby, chain in fine condition tested as 16.54cts, 156cm length  
'20 replacement \$9,300  
\$3,500 - \$4,500
- 618**  
**Victorian 15ct Fancy Link Neck Chain** trace link with star circles design, stamped 15ct tested as 16.75ct 54cm length  
'20 replacement \$5,800  
\$1,800 - \$2,400
- 619**  
**Victorian 15ct Eight Pearl Shield Pendant** baroque and natural shaped pearls on 9ct trace link neck chain (clasp af)  
\$400 - \$600
- 620**  
**Victorian 9ct Gold Gilt Heart Locket** finely scroll engraved with turquoise gem on double scroll loop hanger (slight fault) on modern 9ct box link neck chain  
\$250 - \$400
- 621**  
**Edwardian Sapphire and Pearl Pendant** open oval with looped swag set with seed pearls central and pendant sapphires  
\$400 - \$700
- 622**  
**C1908 Edwardian 9ct Blue Doublet and Diamond Hinged Snap Bangle** nine graduated native oval mixed cut blue doublets interspaced with seed pearls on fancy scroll gallery  
'18 replacement \$2,600  
\$600 - \$1,000
- 623**  
**Victorian 15ct Plain Slave Bangle** c1894 Birmingham B H Joseph & Co  
\$600 - \$1,000
- 624**  
**18ct Trace Link Chain Charm Bracelet** 24 18ct, 9ct and gold plated charms attached  
\$3,000 - \$3,500
- 625**  
**Heavy 9ct Fancy Trace Link Charm Bracelet** with nine 9ct gold charms attached  
\$1,000 - \$1,500
- 626**  
**18ct Fancy Large Trace Link Bracelet** with three 18ct gold charms attached and single cultured pearl  
\$500 - \$800
- 627**  
**9ct (Metal Core) Hinged Snap Bangle** half engraved  
\$300 - \$500
- 628**  
**9ct Hollow Hinged Snap Bangle** plain wax filled with inscription, Birmingham 1916  
'12 replacement 3,100  
\$600 - \$800
- 629**  
**9ct Fancy Panel Bracelet** oval panels centrally mounted with peridot and MOP, attached gold mounted children's teeth pendants  
\$200 - \$400
- 630**  
**9ct Yellow & White Gold Double Rail Link Bracelet** attached gold mounted children's teeth pendants  
\$200 - \$400
- 631**  
**9ct Open Twist Curb Link Bracelet** attached gold mounted children's teeth pendants  
\$200 - \$400



592



611



621



611a



619



612



558



632



613



620



616



605



610



633



615



634

- 632**  
**Victorian 15ct Grand Tour Large Cameo Brooch** detailed high relief carved shell cameo circa 1870 depicting the scene 'Rest on the Flight into Egypt', rub-over gold mounted with cobalt blue enamel framed (slight enamel faults)  
\$1,000 - \$1,400
- 633**  
**9ct Single Large Imitation Cairngorm Brooch** oval mixed cut gem with fancy shaped lozenge frame of engraved leaves  
Historical Valuation Available  
\$200 - \$500
- 634**  
**Victorian 18ct & 9ct Ruby & Diamond Crescent Brooch** fifteen graduated round mixed cut bright red rubies approx 2cts tsw interspaced with 26 old cut diamonds  
'20 replacement \$7,100  
\$2,000 - \$2,600
- 635**  
**9ct Amethyst and Cultured Pearl Circlet Brooch** individual claw set ten amethysts interspaced with ten pearls  
Historical Valuation Available  
\$200 - \$400
- 636**  
**Modern 9ct 25stone Amethyst and Diamond Pendant/Clasp** pierced scroll heart with central oval amethyst and scattered with single cut diamonds  
\$300 - \$500
- 637**  
**Edwardian 9ct Single Amethyst Bar Brooch** six claw set round mixed cut amethyst on ribbed shoulders with ball-bead ends  
\$200 - \$400
- 638**  
**18ct & Platinum 17stone Aquamarine and Diamond Bar Brooch** central cluster of oval mixed cut blue/green aquamarine pave surround with single cut diamonds  
Historical Valuation Available  
\$400 - \$800
- 639**  
**18ct & Platinum Three Stone Sapphire and Diamond Bar Brooch** central oval sapphire with round brilliant cut diamonds on leaf blade shoulders  
Historical Valuation Available  
\$300 - \$500
- 640**  
**Art Deco 18ct White Gold Single Diamond Bar Brooch** central old European diamond on bead patterned platform with scalloped edging with two rose cut pointer diamonds  
'20 replacement \$2,990  
\$300 - \$600
- 641**  
**Vintage 9ct & 18ct Sapphire Diamond and Pearl Bar Brooch** two central sapphires with shoulders of four diamonds, single pearl terminals (faults)  
\$150 - \$300
- 642**  
**18ct Golfing Brooch** styled as a golf bag and clubs pave set with band of seven diamonds  
'17 replacement \$2,750  
\$800 - \$1,000
- 643**  
**14ct White Gold 39stone Diamond Tennis Bracelet** hinged link scroll claw set round brilliant cut diamonds approx 1.20cts tdw  
'20 replacement \$6,000  
\$2,000 - \$2,600
- 644**  
**14ct Jade and Diamond Necklace** central pendant of Jade oval panel with diamond surround supported on ten diamond mount on trace link neck chain  
'20 replacement \$6,600  
\$1,800 - \$2,400
- 645**  
**14ct 51stone Diamond Pendant** heart shape pendant cage claw diamond set with single central diamond approx 1.05cts tdw  
'20 replacement \$4,100  
\$800 - \$1,200
- 646**  
**14ct Diamond and Multi-Gem Pendant** diamond set spiral supporting five pear shape faceted cut gems, 14ct fine link chain  
'20 replacement \$2,100  
\$800 - \$1,000
- 647**  
**14ct 24stone Opal and Diamond Cluster Pendant** central pear cabochon blue-green flash opal approx 1.10cts with surround of 23 brilliant cut diamonds on 9ct curb link neck chain  
'20 replacement \$3,300  
\$1,000 - \$1,500
- 648**  
**10ct 47stone Diamond Pendant** twist scroll design all pave set with round brilliant cuts with central ruby and sapphire floret cluster on 9ct fine snake link chain  
\$300 - \$600
- 648a**  
**18ct White Gold Pink Tourmaline Bead Necklace** 48 cabochon cuts wire link mounted 46cm length  
\$600 - \$800
- 649**  
**18ct Diamond Crescent Pendant** finely ribbed curved bar with central ribbon cross set with five single cut diamonds on fine 18ct chain  
\$400 - \$700
- 650**  
**Pair 14ct White Gold Diamond Stud Earrings** each of four claw set round brilliant cut diamond approx 1.15cts tdw, pierced  
'20 replacement \$3,100  
\$1,000 - \$1,500
- 651**  
**Pair 10ct Diamond Hoop Earrings** each pave claw bead set 16 single cut diamonds approx 0.50cts tdw, pierced  
'20 replacement \$2,100  
\$600 - \$800
- 652**  
**18ct White Gold Single Sapphire Fancy Band Ring** central oval mixed cut deep blue sapphire on grooved band edged with 10 brilliant cut diamonds  
'20 replacement \$4,000  
\$1,000 - \$1,500
- 653**  
**18ct White Gold 26stone Sapphire and Diamond Band Ring** rub-over pave set square cut deep blue sapphire in zig-zag pattern flanked with single cut diamonds  
\$300 - \$600
- 654**  
**18ct White Gold Three Stone Sapphire and Diamond Ring** raised six claw set oval mixed cut sapphire approx 1.50cts with two triangular cut side diamonds approx 0.61cts with nine baguette cut shoulder diamonds  
'20 replacement \$4,500  
\$1,500 - \$2,000
- 655**  
**18ct & Platinum 13stone Sapphire & Diamond Cluster Ring** central oval deep blue sapphire with diamond surround  
\$800 - \$1,200
- 656**  
**14ct White Gold 13stone Sapphire and Diamond Cluster Ring** central oval deep blue sapphire with surround raised cage claw set diamonds  
'20 replacement \$2,500  
\$800 - \$1,200
- 657**  
**Platinum & 18ct Solitaire Diamond Ring** four claw set cushion brilliant cut approx 0.85cts with two baguette cut diamond shoulders with fancy shank inset with yellow gold rope band  
'20 replacement \$7,600  
\$2,500 - \$3,500
- 658**  
**All Platinum Twelve Stone Diamond Eternity Band** pave set round brilliant cuts  
\$800 - \$1,000
- 659**  
**Victorian Milk Opal and Diamond Bridge Ring** three oval cabochon opals interspaced with four old European cut diamonds  
\$300 - \$600





587



588



589



657



650



651



697



698



663



701



598



599



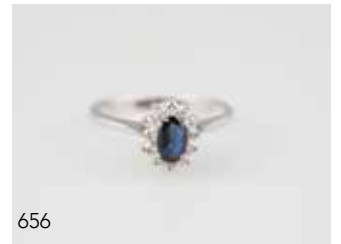
652



654



655



656



590



664



665



695



734



735



745



750



739



746



749



741

- 660**  
**Victorian 15ct Five Stone Sapphire and Diamond Bridge Ring** scroll claw set  
\$200 - \$400
- 661**  
**18ct Seven Stone Sapphire and Diamond Band Ring** central rub-over oval sapphire with shoulder diamonds  
'20 replacement \$2,700  
\$600 - \$1,000
- 662**  
**18ct & Platinum Nine Stone Ruby and Diamond Eternity Band** bead box set  
\$200 - \$400
- 663**  
**Pair 18ct Opal and Diamond Floret Cluster Earrings** each of five pear cabochon fiery opals and 10 diamonds set to flower stem, pierced  
'20 replacement \$3,000  
\$800 - \$1,200
- 664**  
**14ct White Gold Single Aquamarine and Diamond Cluster Ring** four claw set oval mixed cut light blue aquamarine approx 3.65cts with surround 38 round brilliant cut diamonds  
'20 replacement \$4,000  
\$1,400 - \$1,800
- 665**  
**14ct White Gold Single Emerald Ring** raised four claw set oval mixed cut light green emerald approx 1.50cts with six shoulder diamonds  
'20 replacement \$4,000  
\$1,200 - \$1,600
- 666**  
**14ct White Gold 17stone Jade and Diamond Dress Ring** raised claw set bridge of round cabochon apple green jades flanked with eight cut diamonds  
\$300 - \$600
- 667**  
**Vintage 18ct Three Stone Diamond Bridge Ring** crown claw set early round brilliant cut diamonds approx 0.307cts tdw  
'20 replacement \$4,230  
\$300 - \$600
- 668**  
**18ct White Gold Six Stone Sapphire and Diamond Bridge Ring** modern design of two central rectangular cut sapphires with four round brilliant cut shoulder diamonds  
'20 replacement \$3,000  
\$800 - \$1,200
- 669**  
**18ct White Gold Seven Stone Sapphire and Diamond Band Ring** central oval dark blue sapphire with six shoulder diamonds  
'20 replacement \$3,200  
\$800 - \$1,200
- 670**  
**18ct 13stone Sapphire and Diamond Floret Cluster Ring** central round sapphire surrounded with individual claw set diamonds  
'20 replacement \$2,900  
\$800 - \$1,200
- 671**  
**18ct White Gold Three Stone Sapphire and Diamond Bridge Ring** modern design four claw set oval deep blue sapphire on cross-over shoulders  
'20 replacement \$2,300  
\$600 - \$800
- 672**  
**Vintage 18ct & Platinum Seven Stone Diamond Cluster Ring** bead claw star design on fancy shoulders  
\$300 - \$600
- 673**  
**Pair 18ct Uno-A-Erre Italian Cuff-Links** oval panels with frosted finish and bright-cut edging  
\$350 - \$600
- 674**  
**Pair 18ct Cuff Links** plain and monogrammed oval plaques, Chester 1952 with gold standard mark  
'20 replacement \$3,280  
\$400 - \$600
- 675**  
**.9999 Fine Gold Heart Pendant** Asian design of lotus and calligraphy  
\$300 - \$500
- 676**  
**Indian 22ct Gold and Design Bead Necklace** slightly graduating various faceted beads with small tassel 41cm length  
\$800 - \$1,200
- 677**  
**18ct Tri-colour Fancy Necklace** formed as hinged linked elephants in red, yellow and white, 43cm length  
\$2,500 - \$3,200
- 678**  
**18ct Tri-colour Gold Flat Fancy Rail Link Necklace** yellow gold feather chain with front collar of white, red and yellow gold rail links, textured finish and all with bead fringe  
\$600 - \$1,000
- 679**  
**18ct Tri-colour Gold Flat Link Necklace** plaited white, red and yellow gold with 9ct chain lengthener 40 to 50cms length  
\$900 - \$1,400
- 680**  
**Modern 9ct Trace and Rail Link Albert Chain** with matching bracelet which can be used as a lengthener 50cm, 19cm  
\$1,600 - \$2,000
- 681**  
**9ct Trace Link Neck Chain** with plated magnetic clasp, 50cm length  
\$400 - \$800
- 682**  
**Two 9ct Rope Twist Neck Chains** with .925 silver gilt magnetic clasps 47cm, 51cm lengths  
\$600 - \$800
- 683**  
**9ct Trace Link Neck Chain with near matched bracelet** 45cm length  
\$600 - \$1,000
- 684**  
**Two 9ct Box Link Neck Chains** 55cm, 54cm lengths  
\$300 - \$500
- 685**  
**9ct Trace Link Neck Chain with near matched bracelet** 45cm length  
\$300 - \$500
- 686**  
**Antique 14ct Horews Patent Expanding Design Bracelet** inter-woven scroll design  
'15 replacement \$5,460  
\$1,800 - \$2,400
- 687**  
**9ct Fancy Trace Link Bracelet** with heart padlock clasp  
\$300 - \$600
- 688**  
**9ct Trace Link Bracelet** with heart padlock clasp  
\$250 - \$400
- 689**  
**Pair 18ct Hoop Earrings** bright-cut engraved  
\$200 - \$300
- 690**  
**Two Pair 18ct Hoop Earrings** twist pattern (very slight fault to one hoop) and plain hoop earrings  
\$200 - \$300
- 691**  
**Pair 9ct Hoop Earrings** plain and textured pattern, pierced  
\$100 - \$200
- 692**  
**Pair 9ct Double Ring Pendant Earrings** pierced  
\$160 - \$350
- 693**  
**18ct Circlet Pendant** with bust of Queen Nefertiti charms of hand of fatima and Saudi Arabian national emblem  
\$450 - \$650



623



624



625



629



686



626



642



618



645



680



617



679



676



644



678



777



677



782

- 694**  
**18ct Circlet Pendant and Brooch** pierced circle with applied portrait of blindfolded blind justice Dea Bendata Goddess together with bright cut leaf bar brooch  
\$200 - \$300
- 695**  
**13 Unmounted Emeralds** rectangular cut of sizes approx 5.525cts tsw  
\$1,000 - \$2,000
- 696**  
**Unmounted Single Irradiated Blue Diamond** round brilliant cut approx 0.50cts  
\$200 - \$500
- 697**  
**Pair 18ct White Gold Diamond Cluster Stud Earrings** each of seven stone diamond floret cluster, approx 0.55cts tdw for the pair 'replacement \$3,200  
\$800 - \$1,200
- 698**  
**Pair 14ct White Gold Solitaire Diamond Stud Earrings** each four claw set round brilliant cuts approx 0.45cts each, pierced '20 replacement \$2,000  
\$800 - \$1,200
- 699**  
**Pair 14ct White Gold Solitaire Diamond Stud Earrings** each of four claw set diamond approx 0.40cts each, pierced '20 replacement \$2,200  
\$700 - \$1,000
- 700**  
**Pair 14ct White Gold Solitaire Diamond Stud Earrings** each four claw set princess cut diamond approx 0.30cts each, pierced '20 replacement \$1,600  
\$600 - \$800
- 701**  
**Pair Victorian Style 10ct Milk Opal Cluster Pendant Earrings** each of 16 opals on pierced earring loop back hooks  
\$400 - \$600
- 702**  
**Two 9ct 21stone Diamond Eternity Bands** both bead claw set round brilliant cuts  
\$250 - \$450
- 703**  
**9ct Three Stone Ruby & Diamond Bridge Ring** crown claw set oval mixed cut ruby with illusion set side diamonds  
\$400 - \$600
- 704**  
**14ct Single Garnet Dress Ring** oval mixed cut with two pointer diamonds  
\$150 - \$300
- 705**  
**Platinum & 18ct 23stone Ruby Eternity Band** square mixed cut deep red rubies approx 3.90cts tsw  
'20 replacement \$4,100  
\$1,200 - \$1,600
- 706**  
**18ct 'Love Knot' Ring** set with two garnets  
\$200 - \$400
- 707**  
**18ct Four Band Russian Puzzle Ring**  
\$200 - \$400
- 708**  
**Victorian 15ct Triple Coil Snake Ring** diamond chip eyes  
\$250 - \$450
- 709**  
**18ct Four Stone Sapphire and Diamond Floret Ring** oval dark blue sapphire with three petals to single shoulder set with diamonds  
'15 replacement \$3,420  
\$800 - \$1,200
- 710**  
**Edwardian 9ct Chrysoprase Cameo Ring** dark prase oval panel carved with full figure, Chester 1906  
'12 replacement \$900  
\$150 - \$300
- 711**  
**Single Milk Opal Tie Tack** oval cabochon approx 7.5 x 11.5mm, 9ct plain four claw mount  
\$200 - \$400
- 712**  
**Victorian 9ct Aquamarine and Seed Pearl Bar Brooch** flower stem design with three aquamarines  
'12 replacement 1,680  
\$200 - \$400
- 713**  
**Victorian 9ct Seed Pearl Star Burst Brooch/Pendant** star and floret design all set with seed with pearls  
'12 replacement \$1,760  
\$200 - \$400
- 714**  
**Edwardian 9ct Star Burst Brooch/Pendant** petal design all set with seed pearls  
\$200 - \$400
- 715**  
**Edwardian 15ct Peridot and Pearl Shield Pendant** open leave and scroll design set with seed pearls, central green peridot and peridot drop  
\$200 - \$400
- 716**  
**Edwardian 15ct Sapphire and Pearl Bar Brooch** three central rub-over light blue sapphires with six half pearl shoulders  
\$200 - \$400
- 717** No Lot
- 718**  
**Edwardian Silver Gilt Moonstone Necklet** 20 graduated circular cabochon claw set moonstones on fine feathered link chain  
\$300 - \$600
- 719**  
**Edwardian 9ct Shield Pendant** Art Nouveau scroll with round and pear cut aquamarines on 9ct mixed curb link neck chain  
'12 replacement \$1,320  
\$200 - \$400
- 720**  
**Victorian 15ct Double Bar Brooch** mounted with scrolls of turquoise and seed pearls  
\$100 - \$200
- 721**  
**Victorian 9ct Double Bar Brooch** central mounted with lyre set with seed pearls  
\$100 - \$200
- 722**  
**Victorian 9ct 'Lucky Wish Bone' Brooch** mounted with flower stem of three green peridots and seed pearls  
\$100 - \$200
- 723**  
**Victorian 9ct Double Bar Brooch** central oval of garnets and seed pearls as buckle on ribbon  
\$100 - \$200
- 724**  
**Victorian 9ct Double Brooch** central heart with cluster of seed pearls on bead shoulders  
\$100 - \$200
- 725**  
**Victorian 9ct Heart Photo Locket** double sided photo panels surrounded with half pearls, Chester 1903 by Edward Durban & Co of Birmingham  
\$200 - \$400
- 726**  
**Three Victorian Stick Pins and Charm** 15ct horse shoe set with rubies and half pearls, portrait cameo pin, clover pin and gold stone horse shoe charm  
\$200 - \$300
- 727**  
**Victorian 9ct Bar Brooch** central single topaz with surround of seed pearls  
\$100 - \$200
- 728**  
**Victorian Finely Woven Straw Trace Link Muff Chain** gold plated mounts with Chinese carved nut fob attached 116cm length  
\$100 - \$300

- 729**  
**Single Strand Slightly Graduated Amber Bead Necklace** interspaced with gold plated beads with magnetic ball clasp 56cm length (needs restringing)  
\$100 - \$300
- 730**  
**Chinese Filigree Silver and Turquoise Bracelet** six ornate hinged panels four set with oval turquoises together with single strand graduated turquoise bead necklace on s/s clasp 48cm length  
Historic valuations available  
\$200 - \$500
- 731**  
**Single Strand Graduated S/S Bead Necklace** 60cm length  
Historical Valuation Available  
\$100 - \$200
- 732**  
**Wide S/S Hinged Bangle** half engraved Birmingham 1947  
Historic Valuation Available  
\$100 - \$200
- 733**  
**Silver Enamelled Butterfly Brooch** cobalt blue wings, edged in black  
\$100 - \$200
- 734**  
**18ct Gents Skull Two Diamond Dress Ring** design of skull with cap and goggles, round brilliant cut diamond eyes, approx 0.49cts tdw  
\$2,500 - \$3,500
- 735**  
**18ct 20stone Emerald Harem Ring and Near Matching Earrings** five conjoined narrow band rings each raised claw set with one, two, three gems together with near matching pair earrings each set with nine gems. pierced  
\$800 - \$1,200
- 736**  
**18ct 20stone Ruby Harem Ring** five conjoined narrow band rings each set with five mixed-cut rubies  
\$300 - \$500
- 737**  
**18ct 20stone Emerald Harem Ring** five conjoined narrow band rings each set with five mixed-cut emeralds  
\$300 - \$500
- 738**  
**14ct Nine Stone Multi-Gem Five Band Ring** harem design comprised of five stacking bands each set with two gems  
\$150 - \$300
- 739**  
**18ct Single Stone Smokey Quartz Dress Ring** triple corner claw set step cut octagonal large quartz 20 x 14mm on scroll gallery and split four wire scroll shoulders  
Historical Valuation Available  
\$500 - \$1,000
- 740**  
**9ct Single Stone Citrine Dress Ring** large oval mixed cut pale yellow citrine on bamboo double gallery and split shoulders  
\$250 - \$500
- 741**  
**9ct Single White Opal Dress Ring** rub-over set on triple pierced shoulders oval cabochon approx 6.21cts  
'13 replacement \$3,050  
\$1,000 - \$1,500
- 742**  
**9ct Single Greenstone Panel Dress Ring** four claw set on curved platform pierced with four hearts  
'15 replacement 2,020  
\$600 - \$800
- 743**  
**9ct Single Stone Glass Cairngorm Dress Ring** large amber yellow mixed cut raised on fancy trace link gallery  
\$200 - \$400
- 744**  
**14ct Single Stone Smokey Quartz Dress Ring** large oval mixed cut on scallop gallery with fancy twin leaf shoulders  
\$250 - \$500
- 745**  
**18ct Single Carnelian Dress Ring** oval striated cabochon gem in rub-over setting with wire twist frame  
Historical Valuation Available  
\$200 - \$400
- 746**  
**9ct Single Citrine Dress Ring** central oval mixed cut citrine in modern setting of three tiers stemmed beads with textured finish including shoulders  
'15 replacement \$1,970  
\$600 - \$800
- 747**  
**9ct Single Amethyst Dress Ring** oval mixed cut in modern bold claw setting  
'15 replacement \$1,420  
\$400 - \$600
- 748**  
**9ct Single Imitation Alexandrite Dress Ring** large round mixed cut double claw set fancy gallery  
\$150 - \$300
- 749**  
**18ct Single Citrine Ring** plain raised four corner claw square octagonal step cut gem '17 replacement \$2,850  
\$600 - \$1,000
- 750**  
**9ct White Gold Single Jade Panel Ring** oval mutton fat jade four claw set on fancy dentilled frame  
\$200 - \$400
- 751**  
**Greek 14ct Obsidian Stone Intaglio Portrait Ring** deeply carved with head of god possibly mercury  
\$300 - \$500

## POCKET & WRIST WATCHES

- 752**  
**18ct Hunter Cased Lever Wind Pocket Watch** white enamel dial with seconds movement by Rotherham's, London with presentation inscription on back cover 'Surgeon Major Burns from the Boys of the 1st Contingent for Kind & Thoughtful Services Rendered While On Active Service South Africa 1899 - 1901'  
\$1,500 - \$2,500
- 753**  
**18ct Open Face Key Wind Pocket Watch** fusee movement No 17146 ornately engraved all gilt dial, machine engraved back cover with case marked for J L Samuel & Co (probably) 1836, Chester  
\$1,200 - \$1,800
- 754**  
**18ct Rotherhams Hunter Cased Lever Wind Pocket Watch** white enamel dial with seconds movement, cap jewels to all escapement pivots, Breguet overcoil. cased marked for Birmingham 1908  
\$1,500 - \$2,000
- 755**  
**18ct Rotherhams Hunter Cased Lever Wind Pocket Watch** white enamel dial with seconds movement, cape jewels to all escapement pivots, Breguet covercoil, cased marked Birmingham 1905  
\$1,800 - \$2,500
- 756**  
**9ct Plain Hunter Cased Lever Wind Pocket Watch** white enamel dial with Arabic numerals swiss movement (glass af) case dated 1919 Birmingham  
\$700 - \$1,000
- 757**  
**9ct Hunter Cased Lever Wind Small Pocket Watch** fancy gilt dial all engraved case on gold plated snake link muff chain 132cm length  
\$400 - \$600



768



767



769



770



771



772



773



774



775



752



753



754



755



756



758

**758**  
**Late C18th Pair Cased Verge Key Wind Pocket Watch By Darlington of London** gilt brass inner case with white enamel dial Arabic numerals, tortoiseshell outer case with brass decorative stud rims  
 \$800 - \$1,200

**759**  
**Art Deco .925 Silver Cased Lever Wind Pocket Watch by International Watch Co** silvered dial with seconds movement and Arabic numerals  
 \$300 - \$600

**760**  
**C1930's Mappin Purse/Travel Watch** fully jewelled with Swiss lever movement, snake skin slide opening case  
 \$150 - \$300

**761**  
**Early C20th .925 Silver Cased Gents Wrist Watch** white enamel dial with red XII, Buren Swiss movement of 15 jewels (some faults)  
 \$100 - \$150

**762**  
**Silver Cased Small Open Face Key Wind Pocket Watch** plain white dial with floral engraved back cover  
 \$100 - \$200

**763**  
**Vintage 14ct Cased Gents Wristwatch by Hamilton** plain circular silvered dial with Arabic numerals and indices  
 \$300 - \$500

**764**  
**Vintage Stainless Steel Cased Gents Wrist Watch by JW Benson England** 17 jewel movement with silver dial and sweeping seconds hand  
 \$200 - \$300

**765**  
**Longines Classic Gents Wrist Watch** quartz gold plated stainless steel on leather strap (new battery 12/12/20)  
 \$150 - \$250

**766**  
**Ladies Rolex Oyster Perpetual Datejust Chronometer Wrist Watch** 26mm fluted bezel on jubilee steel and gold rolosor bracelet strap 179173 model, original boxes and booklets C2007  
 \$4,000 - \$6,000

**767**  
**Cuervoy Y Sobrinos Hotel Presidente Edition Gents Dress Wrist Watch** manual wind with mechanical movement on leather strap 39cm dia dial of gold plate, stainless steel back  
 Luxury Wrist Watches established in 1882 Havana Cuba made in Switzerland '21 Replacement \$5,500  
 \$1,500 - \$2,500

**768**  
**Cuervoy Y Sobrinos Company Bacardi Edition Gents Dress Wrist Watch** manual wind with mechanical movement on leather strap 39cm dia dial of gold plate, stainless steel back  
 Luxury Wrist Watches established in 1882 Havana Cuba made in Switzerland '21 Replacement \$5,500  
 \$1,500 - \$2,500

**769**  
**Gents Dress Wrist Watch Longines Regulateur Marriage Half Skeleton Mechanical** 48mm black dial with roman numerals and two subsidiary dials, the open back showing fancy pierced plate pocket watch movement C1900  
 \$400 - \$600

**770**  
**Gents Dress Wrist Watch Materazzi Regulateur - Half Skeleton Mechanical Marriage** 42mm black dial with Arabic numerals and two subsidiary dials, open back showing watch movement C1900  
 \$200 - \$400

**771**  
**Gents Dress Wrist Watch Le Coultre Co - Half Skeleton Mechanical Marriage** 46mm white enamel dial with roman numerals, open back showing pocket watch movement C1900  
 \$300 - \$600

**772**  
**Gents Dress Wrist Watch Deutsche Uhren-fabrikation Glashutte - Half Skeleton Mechanical Marriage** 48mm white enamel dial with Arabic numerals, open back showing pocket watch movement C1880  
 \$400 - \$600

**773**  
**Montana 'blu' Creations Paris Wrist Watch** all stainless steel on integral bracelet strap  
 \$100 - \$200



766



766

**774**  
**C1990 Must de Cartier Vermeil Argent Quartz .925 Ladies Wrist Watch** gold plate on sterling silver, yellow dial marked with black roman numerals, cabochon blue spinel winder on leather strap  
 \$600 - \$800

**775**  
**C1990 Must de Cartier Argent Quartz .925 Ladies Wrist Watch** gold plate on sterling silver with plain black enamel dial, cabochon sapphire winder on leather strap  
 \$600 - \$800

**776**  
**Cornell Swiss Ceramic Ladies Wrist Watch** all black ceramic stainless steel on integral bracelet strap  
 \$200 - \$300

**777**  
**1897 Sovereign**  
 \$600 - \$800

**778**  
**1916 Sovereign**  
 \$550 - \$700

**779**  
**1914 Half Sovereign**  
 \$300 - \$400

**780**  
**1907 Sovereign** Melbourne mint with brass circular sovereign case  
 \$600 - \$700

**781**  
**1932 Netherlands 10g Gold Coin** 14ct pendant mount together with 14ct filigree pendant  
 \$500 - \$700

**782**  
**Pair Victoria 1887 Jubilee Issue Half Sovereigns** London Mint with pendant hoop to coin and attached 9ct bead stud earrings, pierced  
 \$600 - \$1,000

**783**  
**1887 British Silver Enamelled Crown Brooch**  
 \$50 - \$100

**784**  
**Engraved Gold Plated Circular Sovereign Case** on plated neck chain  
 \$80 - \$160

**785**  
**Plain S/S Circular Sovereign Case** on .925 curb link neck chain Birmingham 1905  
 \$80 - \$160

**786**  
**American 10ct CocoCola Lapel Pin** five year service  
 \$100 - \$200

**787**  
**WWI 12ct NZ Flying Corp Brooch** and MOP NZ Onward Brooch  
 \$200 - \$300

**788**  
**Collection Various Enamelled Badges** with E.P.S armband (Emergency Precautions Scheme WWII)  
 \$60 - \$140



CATALOGUE IN PRODUCTION

## Coins & Stamps

## Affordable Jewellery

Wednesday  
31 March 2021  
12 noon start

Enquiries

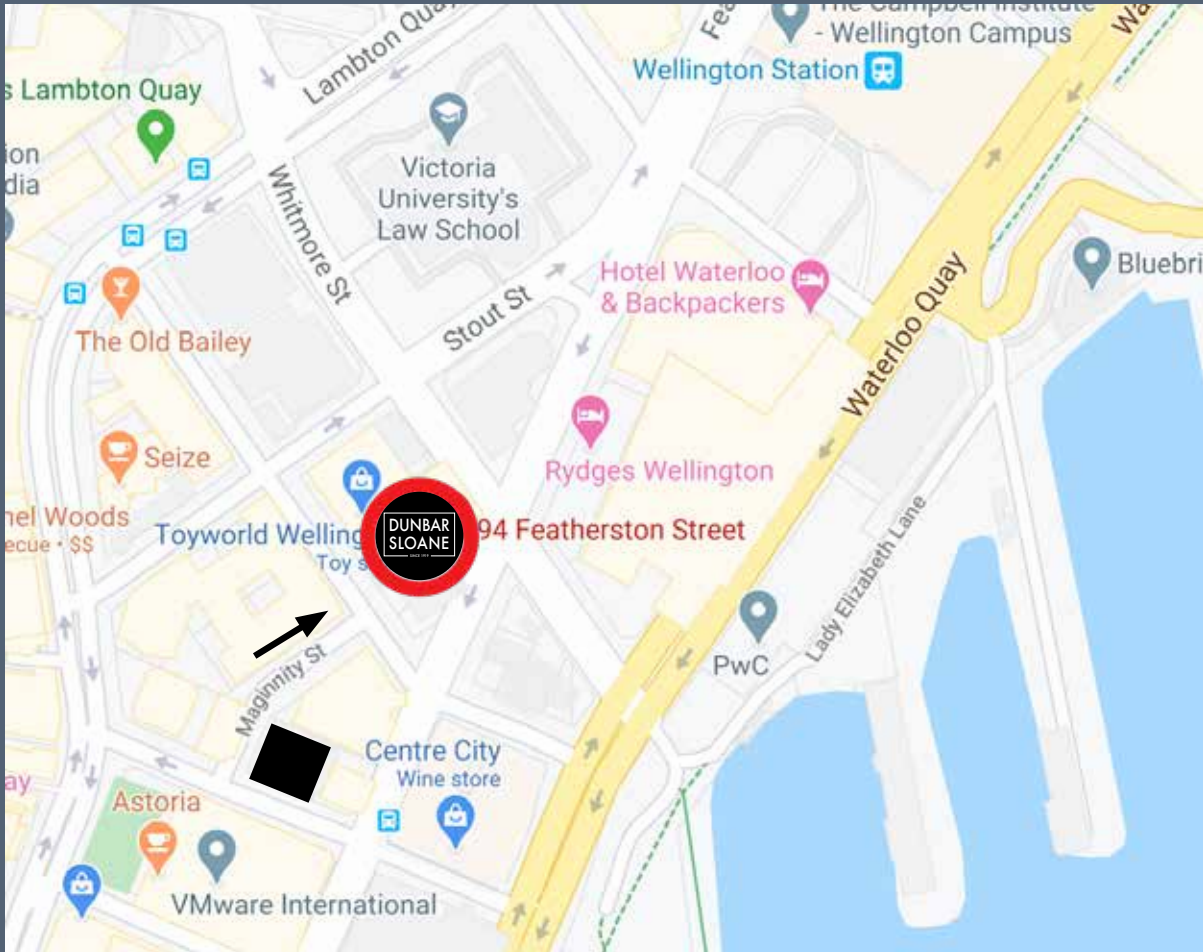
**Bettina Frith**

+64 4 472 1367

[jewellery@dunbarsloane.co.nz](mailto:jewellery@dunbarsloane.co.nz)



# WE HAVE MOVED 94 FEATHERSTON STREET



Our Wellington auction house has shifted to new premises, located in Kiwi Wealth House  
corner of Featherston & Ballance Street.

Our phone number, email address and bank details remain unchanged.

We look forward to welcoming you to our new premises.

Dunbar Sloane Ltd  
94 Featherston Street  
Wellington CBD  
[www.dunbarsloane.com](http://www.dunbarsloane.com)



SINGLE VENDOR AUCTION

# Emporos Gallery Greytown Fabric Auction

Tuesday  
23 March 2021  
12 noon start

After 23 years of trading in Greytown, the owner of Emporos Gallery are retiring

All surplus fabric including fine French linens are to be sold in a one vendor, no reserve auction.

On view in conjunction with our Antique & Decorative Arts and Estate Jewellery Auctions.

Enquiries  
+64 4 472 1367  
[info@dunbarsloane.co.nz](mailto:info@dunbarsloane.co.nz)

# RECENT FINE JEWELLERY HIGHLIGHTS

## CONSIGNMENTS INVITED



1



2



3



4



5



6



7



8



9



10



11



12



13



14



15



16



17



18



19



20

Illustrated: **1** 14ct White Gold Tanzanite & Diamond Necklace - \$27,750 **2** Bvlgari Bulgari Divas Dream Style 18ct White Gold Diamond Emerald Necklace - \$7,300 **3** Pair 18ct White Gold & Diamond Pendant Earrings - \$3,800 **4** 18ct White Gold 19stone Sapphire & Diamond Cluster Ring - \$11,000 **5** All Platinum Three Stone Emerald & Diamond Ring - \$13,400 **6** All Platinum Five Stone Diamond Ring - \$22,700 **7** All Platinum 27stone Aquamarine & White Spinel Cluster Ring - \$5,100 **8** All Platinum 19stone Emerald & Diamond Cluster Ring - \$7,200 **9** Pair 14ct White Gold Sapphire & Diamond Pendant Earrings - \$9,400 **10** Victorian 18ct Essex Crystal Reverse Intaglio Brooch - \$6,600 **11** Pair 18ct & Platinum Diamond and Tanzanite Pendant Drop Earrings - \$9,600 **12** Art Deco Platinum & Diamond Dress Clip - \$19,300 **13** German 14ct Lapis Lazuli Neck Chain - \$4,800 **14** Early C20th Grand Tour Italian Mosaic Necklace - \$2,000 **15** 18ct Tiki Pendant on Chain - \$5,700 **16** Rolex Ladies All 18ct Gold Wrist Watch - \$22,100 **17** 18ct Eleven Stone Emerald & Diamond Necklet with Matching Earrings - \$30,500 **18** Art Deco Platinum, Diamond & Sapphire Bracelet - \$10,860 **19** Victorian Grand Tour 18ct Mosaic Bracelet - \$7,840 **20** 18ct Mounted Five Sovereign Bracelet - \$7,700 \* Rounded to the nearest hundred and include buyers premium + GST

# RECENT ART HIGHLIGHTS

2020 RESULTS - OVER 90% OF LOTS SOLD  
& OVER 130% BY VALUE



1



2



3



4



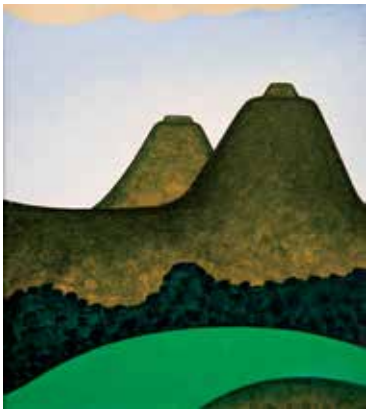
5



6



7



8



9



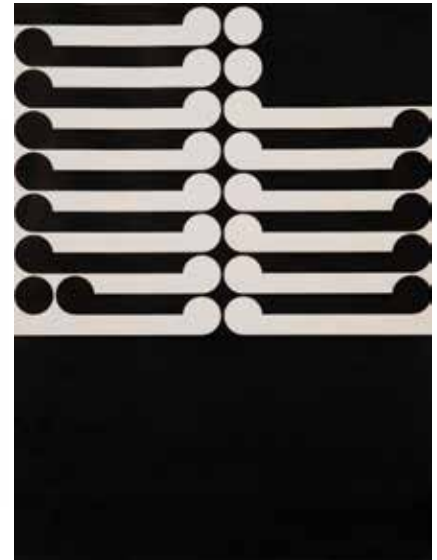
10



11



12



13

Illustrated: **1** Seraphine Pick *Surface Paradise*, oil on linen - \$58,000 **2** Don Peebles, *Relief Construction*, enamel on wooden construction - \$23,900 **3** Paul Dibble *Pacific Dancer*, cast bronze - \$86,600 **4** Colin McCahon, *Singing woman on pink ground*, oil on board - \$400,000 **5** Colin McCahon *North Otago Landscape 3*, oil on board - \$717,300 **6** Melvin (Pat) Day *Breaker Bay, Wellington Harbour*, oil on canvas - \$52,600 **7** Colin McCahon *Truth from the King Country Load Bearing Structures*, oil on canvas - \$96,500 **8** Michael Illingworth *Untitled*, oil on board - \$33,800 **9** Fiona Pardington *Portrait of Female Huia*, c-type print - \$56,200 **10** Charles Tole *Colour Pattern*, oil on board - \$25,300 **11** Toss Woollaston *Grey River*, oil on board - \$56,200 **12** Max Gimblett *Treasure*, mixed media on board - \$24,000 **13** Gordon Walters *Koru*, ink on paper - \$113,500 \* Rounded to the nearest hundred including buyers premium + GST



ENTRIES CURRENTLY INVITED

## New Zealand & International Fine Arts

21 & 22 April 2021

Enquiries

**Helena Walker**

+64 4 472 1367 / 0274 713 662  
art@dunbarsloane.co.nz

**Dunbar M Sloane**

+64 9 377 5820 / 021 473 998  
auckland@dunbarsloane.co.nz



ENTRIES CURRENTLY INVITED

## Studio Ceramics & Applied Arts

22 April 2021

Enquiries

**Helena Walker or Bettina Frith**

+64 4 472 1367  
0274 713 662  
art@dunbarsloane.co.nz





ENTRIES CURRENTLY INVITED

## Fine & Estate Jewellery

June 2021

Enquiries

**Bettina Frith**

+64 4 472 1367

[jewellery@dunbarsloane.co.nz](mailto:jewellery@dunbarsloane.co.nz)



ENTRIES CURRENTLY INVITED

## Affordable Art

May/June 2021

Enquiries

**Helena Walker**

+64 4 472 1367

[art@dunbarsloane.co.nz](mailto:art@dunbarsloane.co.nz)

# CONDITIONS OF SALE

- 1.**

The highest Bidder is deemed to be the Buyer, and if during the Auction the Auctioneer considers that a dispute has arisen, the Lot in dispute shall be immediately put up again for sale.
- 2.**

The Auctioneer has the right to refuse any bid and to advance the bidding at his absolute discretion.
- 3.**

The Seller shall be entitled to place a reserve on any Lot and the Auctioneer shall have the right to bid on behalf of the Seller for any Lot on which a reserve has been placed.

Dunbar Sloane Ltd have the right to withdraw or divide any Lot or to combine any two or more Lots at their sole discretion.
- 4.**

The Buyer shall forthwith upon the purchase give in his/her name and permanent address.

The Buyer may be required to pay down forthwith the whole or any part of the Purchase Money, and if he/she fails to do so, the Lot may at the Auctioneer's absolute discretion be put up again and resold.
- 5.**

Each Lot sold by the Seller thereof with all faults and defects therein and with all errors of description and is to be taken and paid for whether genuine and authentic or not and no compensation shall be paid for the same.

Dunbar Sloane Ltd act as agents only and neither they nor the Seller are responsible for any faults or defects in any Lot or the correctness of any statement as to the authorship, origin, date, age, attribution, genuineness, provenance or condition of any Lot.

All statements in the Catalogues, Advertisements or Brochures of forthcoming sales as to any of the matters specified in (b) above are statements of opinion, and are not to be relied upon as statements of representations of fact, and intending purchasers must satisfy themselves by inspection or otherwise as to all of the matters specified in (b) above, as to the physical description of any Lot, and as to whether or not any Lot has been repaired.

The Seller and Dunbar Sloane Ltd do not make or give, nor has any person in the employment of Dunbar Sloane Ltd any authority to make or give, any representation or warranty.

In any event neither the Seller nor Dunbar Sloane Ltd are responsible for any representation or warranty, or for any statement in the Catalogues, Advertisements or Brochures of forthcoming sales.
- 6.**

Notwithstanding any other terms of these conditions, if within 7 days after the sale Dunbar Sloane Ltd have received from the Buyer of any Lot notice in writing that in his view the Lot is deliberate forgery and within 9 days after such notification, the Buyer returns the same to Dunbar Sloane Ltd in the same condition as at the time of sale and
- 7.**

satisfies Dunbar Sloane Ltd had considered in the light of the entry in the Catalogue the Lot is a deliberate forgery then the sale of the Lot will be rescinded and the purchase price of the same refunded.

To prevent inaccuracy in delivery, and inconvenience in settlement of Purchase, no Lot can be taken away during the times of sale, nor can any Lot be taken away unless it has been paid for in full.

All lots are to be paid for and taken away at the Buyer's expense within two working days from the sale. Purchases, whilst in our care, will be insured for this period (subject to terms and conditions).
- 8.**

On failure of a Buyer to take away and pay for any Lot in accordance with Condition 7, Dunbar Sloane Ltd reserves any other right or remedies.

To resell the Lot or cause it to be resold by public sale, any money paid in part payment being forfeited, any deficiency attending such resale after deducting all costs incurred in connection with the Lot to be made good by the defaulting Buyer, and any surplus to be the Seller's or: To store the Lot or cause it to be stored whether at their own premises or elsewhere at the sole expense of the Buyer, and to release the Lot only after payment in full of the purchase price together with interest there on of 5% above Bank minimum lending rate, the accrued cost of removal, storage and insurance (if any) and all other costs incurred in connection with the Lot.

If the Lot has been in store pursuant to (ii) for more than 6 months, to remove the Lot from store and to exercise the right set out in (i).

The Buyer shall pay to Dunbar Sloane Ltd a premium of 18% on the hammer price together with GST at the standard rate on the premium, and agrees that Dunbar Sloane, when acting as agent for the Seller, may also receive commission from the Seller.



ENTRIES CURRENTLY INVITED

## Maori & Pacific Artefacts

22 April 2021

Enquiries

**Dunbar M Sloane**

+64 21 473 998

auckland@dunbarsloane.co.nz



ENTRIES CURRENTLY INVITED

## New Zealand & Antiquarian Books

May/June 2021

Enquiries

**Anthony Gallagher**

+64 274 713 667

antiques@dunbarsloane.co.nz

# BUYERS GUIDE

If you have not bought from Dunbar Sloane before, please read the following notes. Staff will be pleased to answer any questions you may have.

## BEFORE AUCTION

The terms and conditions under which the buyer acts at a sale are detailed at the back of this catalogue. We recommend that you read and understand these conditions of business before registering to bid at an auction. This sale is subject to the conditions of business printed in this catalogue and to the reserves.

### Viewing

All lots are available for inspection prior to the sale. Although staff will endeavour to answer your enquiries, and give advice, the final decision to bid, is at your discretion and liability.

### Pre-Sale Estimates

The estimated prices printed below the catalogue descriptions are in New Zealand dollars and are the approximate prices expected to be realised, excluding buyers premium. They are not definitive, they are prepared well in advance of the sale and they are subject to revision.

### Condition Reports

Dunbar Sloane Ltd will provide a verbal condition report if you would like an opinion on any particular lot prior to purchasing. These must be requested at least 24 hours before the commencement of auction. All goods are sold "as is" and it is up to the buyer to satisfy themselves as to the condition of an item before the auction.

## THE AUCTION

### Buying at Auction

You are able to bid using the following four methods:

#### 1. Bidding in the Room

To bid at the auction you will need to register for a bidding number at the front desk either during the viewing or prior to the auction. Please bid clearly and promptly using your bidding number.

#### 2. Absentee Bidding

If you are unable to attend the auction, Dunbar Sloane Ltd can bid on your behalf according to your written instructions. This is a free service for intended buyers. Please complete clearly the form at the back of this catalogue and submit it to Dunbar Sloane Ltd at least 24 hours before the sale to ensure it is safely received. Lots will be purchased for you as reasonably as possible, subject to other bids in the room and to reserves.

#### 3. Telephone Bidding

If you are unable to attend the auction, you can elect to bid by telephone (subject to availability). Telephone bidding must be arranged with Dunbar Sloane Ltd prior to the sale and is subject to a minimum lot estimate of \$500 or greater. Please note that the auctioneer determines the increments in bidding, not the telephone bidder. We accept no responsibility if for whatever reason we are unable to contact you and as such recommend leaving a covering bid.

#### 4. Live Online Bidding

We offer live online bidding on our website: [www.dunbarsloane.co.nz](http://www.dunbarsloane.co.nz)

Registering online does not automatically register to bid, and further identification maybe required, especially if you are an International client.

### Selling Rate

Fine Art auctions are generally conducted at the rate of about 60 lots per hour. However, this can vary.

## AFTER THE AUCTION

### Payment

Payment for purchase is due in New Zealand dollars within 48 hours from the date of sale by cash, cheque, eftpos or electronic transfer. Due to the Anti Money Laundering Act we no longer accept cash or cheques for purchases of \$10,000 or over. Bank details as follows:

**Dunbar Sloane Ltd**  
**06 0501 0524945 0**  
**Swift Code ANZBNZ22**

Please include details of sale date and lot numbers with all payments.

International clients will need to add an additional \$25NZD to cover bank transfer fees

### Collection of Purchases

Property purchased can be collected as soon as full payment has been received. Any items not collected within seven days of the auction may be subject to a storage and fee. Insurance (subject to terms and conditions) applies for up to two working days from the date of the sale whilst items are in our care.

Items must be paid for straight away and a second account for courier/freight charges will follow as soon as possible when we have confirmed courier charges.

### Packaging and Transportation

We advise buyers to arrange transport and insurance with their preferred provider/s. We accept no responsibility for loss or damage in transit. For smaller items able to be couriered, Dunbar Sloane Ltd can pack and courier for a fee. This is to be paid before the goods leave our premises. We pack with care, however we take no responsibility for damage once your goods leave our premises. It is up to the buyer to arrange insurance to cover any damage or loss in transit.

### BUYERS PREMIUM

**The buyer shall pay to Dunbar Sloane Ltd a premium of 18% of the hammer price plus GST on the premium only—effectively adding 20.70% to the hammer price.**

# ABSENTEE BIDDING FORM

94 Featherston Street, Wellington  
PO Box 224, Wellington 6140, New Zealand  
P +64 4 472 1367  
F +64 475 7389  
E info@dunbarsloane.co.nz

Type of Auction \_\_\_\_\_

Auction Date \_\_\_\_\_

Please bid on my behalf at the above sale for the following lots. These bids are to be executed as low as permitted by other bids or reserves. I agree to comply with the Conditions of Sale as printed in the Catalogue.

Full name \_\_\_\_\_

Address \_\_\_\_\_

Phone \_\_\_\_\_

Email \_\_\_\_\_

SIGNED \_\_\_\_\_

DATE \_\_\_\_\_

Lot Number	Title / Description (use block letters)	Maximum Bid Price (excluding premium)

## International Bidders

Are required to provide photographic proof of ID – passport or drivers licence together with proof of address – utility bill, bank or credit card statement etc. Failure to provide this will result in your bids not being processed. For higher value lots you may also be asked to provide a bank reference.

NOTE Individual bids registered by overseas bidders must be over \$500 in individual value.

## Please double check your bids and read terms below

Please submit your bid as early as possible. In the event of identical bids, the earliest will take precedence.

'Buy' bids are not accepted. The limit you leave should be the amount to which you would bid if you were to attend the Sale.

Buyers are reminded that there is a 18% buyer's premium on the hammer price plus GST on the premium. See conditions of sale.

