



FINE JEWELLERY

10 NOVEMBER 2021







FINE & ESTATE JEWELLERY

WEDNESDAY 10TH NOVEMBER - 2PM START

WELLINGTON VIEWING SCHEDULE

Sunday 7th November 12noon - 3pm

Monday 8th November 9am - 4pm

Tuesday 9th November 9am - 4pm

Wednesday 10th November 9am - 2pm

LOCATION

Kiwi Wealth House, 94 Featherston Street
Wellington CBD
PO Box 224, Wellington 6140

ENQUIRIES

Bettina Frith
+64 4 472 1367
jewellery@dunbarsloane.co.nz

LIVE BIDDING

Please note we now offer our own live online bidding service. For instruction see our website: www.dunbarsloane.com
Online registrations and absentee bids must be made at least 2 hours before the auction commences, or 24 hours if you are an International client

ABSENTEE & TELEPHONE BIDDING

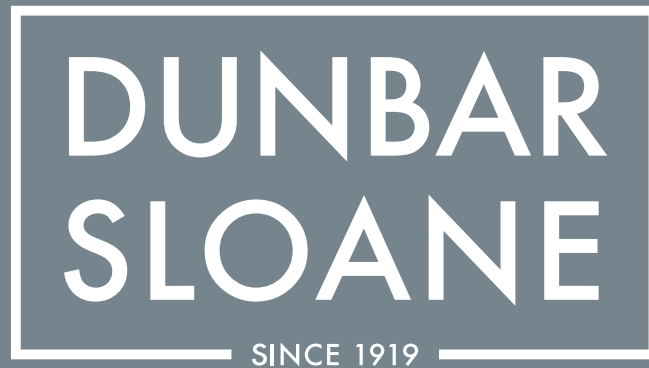
If you are unable to attend the auction, you can elect to register an absentee or telephone bid.
Telephone bidding must be arranged with Dunbar Sloane Ltd prior to the sale and is subject to availability.

BUYERS PREMIUM

Each lot is subject to 18% + GST buyers premium

THIRD PARTY VALUATIONS

Please note: Dunbar Sloane Ltd accepts no responsibility whatsoever for the accuracy of specialist third party jewellery valuations as supplied to us on behalf of the vendors.



**Proudly New Zealand family
owned and operated for
over 100 years**

Dunbar Sloane Ltd
94 Featherston Street
Wellington CBD
www.dunbarsloane.com



CATALOGUE IN PRODUCTION

New Zealand & International Fine & Applied Arts

24 & 25 November 2021

ENTRIES CURRENTLY INVITED

April 2022

Enquiries

Helena Walker

+64 4 472 1367 / 0274 713 662
art@dunbarsloane.co.nz

Dunbar M Sloane

+64 9 377 5820 / 021 473 998
auckland@dunbarsloane.co.nz





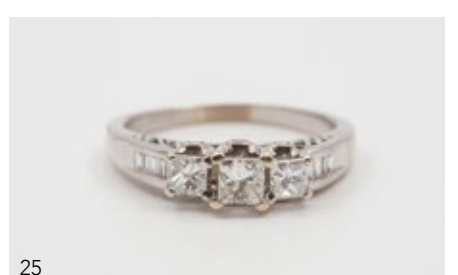
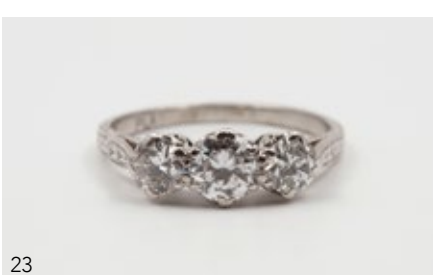
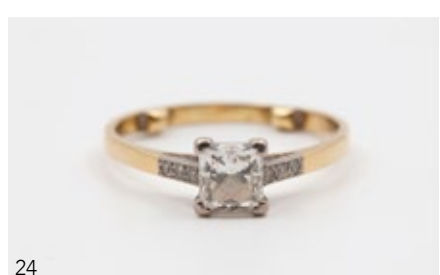
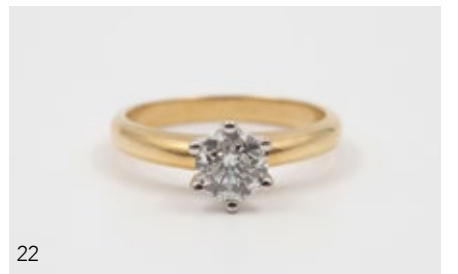
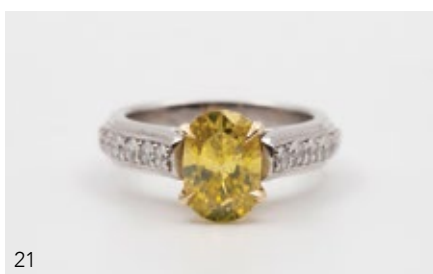
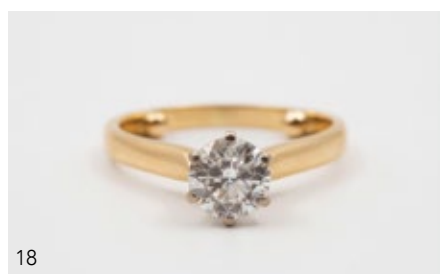
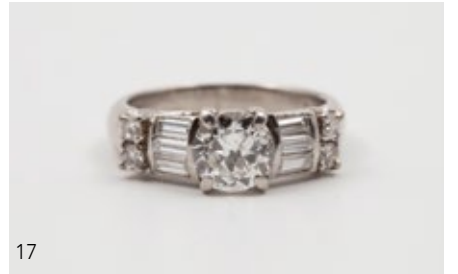
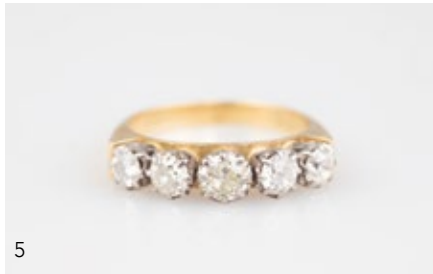
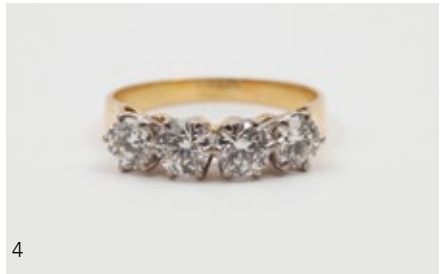
FINE & ESTATE JEWELLERY

Wednesday 10 November

2pm start

Lots 1 - 366

- 1**
Victorian 15ct Single Garnet Ring, octagonal step cut garnet scroll rub-over set on fancy floral and blue enamel shoulders
Ring size N
\$500 - \$800
- 2**
Victorian 18ct Sapphire Pearl and Ruby Cluster Ring, central deep blue sapphire with surround of six half natural pearls and four small rubies set to the corners
Ring size O 1/2
\$300 - \$600
- 3**
All Platinum Art Deco Three Stone Diamond Bridge Ring, box set early round brilliant cut diamonds approx 0.31ct, 0.256ct, 0.275ct on fancy scroll pierced gallery, marked S D & Co Stewart Dawson & Co. Stewart Dawson founded in C1886 Stewart Dawson and Co in Sydney with branches in Melbourne, Auckland and Dunedin in New Zealand and Regent Street in London.
Ring size N 1/2
'21 replacement \$5,250
\$1,400 - \$1,800
- 4**
18ct Four Stone Diamond Bridge Ring, raised crown claw set round brilliant cuts approx 2cts tdw
Ring size T 1/2
'21 replacement \$12,900
\$3,500 - \$4,500
- 5**
18ct Five Stone Diamond Bridge Ring, crown claw set old European cuts approx 1.90cts tdw
Ring size T
'21 replacement \$9,000
\$2,000 - \$3,000
- 6**
Pair 18ct White Gold Diamond Stud Cluster Earrings, each of central round brilliant cut with pave surround of 15 diamonds approx 0.54cts tdw for earring pair
'21 approx retail value \$3,000
\$800 - \$1,500
- 7**
14ct 17stone Sapphire and Diamond Cluster Ring, central four claw set oval vivid blue sapphire with channel set surround of round brilliant cuts and six baguette shoulder diamonds approx 0.50cts tdw
Ring size L
'21 replacement \$6,100
\$1,500 - \$2,000
- 8**
18ct Five Stone Sapphire and Diamond Band Ring, channel set three round mixed cut sapphires approx 1cts tsw and two brilliant cut diamonds approx 0.40cts
Ring size O 1/2
\$800 - \$1,400
- 9**
Early C20th 18ct Five Stone Burmese Sapphire Bridge Ring, mixed cut oval bright medium blue sapphires approx 0.976ct, 0.750ct, 0.719ct, 0.387ct and 0.629ct interspaced with eight swiss cut diamonds
Ring size M 1/2
'21 replacement \$22,160
\$6,500 - \$9,000
- 10**
18ct White Gold Three Stone Sapphire and Diamond Bridge Ring, modern raised double four claw set central oval mixed cut bright blue/green sapphire approx 2.120cts with side round brilliant cut diamonds approx 0.548ct, 0.561ct
Ring size O
'21 replacement \$22,740
\$7,600 - \$10,500
- 11**
All Platinum Sapphire and Diamond Cluster Ring, modern design four corner set rectangular cushion cut bright violet blue sapphire approx 10.47cts with 20stone diamond surround, shoulders and gallery all pave set with diamonds, ten shoulder sapphire set to the middle band approx 1.62cts tdw
Ring size N
'18 Replacement \$88,000
\$35,000 - \$45,000
- 12**
All Platinum Emerald and Diamond Cluster Ring, modern design raised double four claw set round mixed cut bright green emerald approx 4.65cts with double surround and split shoulders all pave set with 76 round brilliant cut diamonds approx 1.36cts tdw
Ring size M
'15 replacement \$51,000
\$20,000 - \$25,000
- 13**
18ct Three Stone Emerald and Diamond Bridge Ring, modern raised four corner claw set octagonal step cut deep green emerald approx 3.05cts flanked by princess cut diamonds
Ring size K 1/2
'21 replacement \$18,000
\$5,000 - \$7,000
- 14**
18ct 21stone Emerald and Diamond Cluster Ring, rub-over set emerald cut bright green emerald approx 5cts with surround of round brilliant cut diamonds
Ring size O 1/2
'14 replacement \$23,770
\$6,000 - \$9,000
- 15**
18ct White & Yellow Gold 47stone Sapphire and Diamond Cluster Ring, central raised four claw set oval dark blue sapphire with pave set double surround square of diamonds approx 1.32cts tdw
Ring size M
'14 replacement \$9,455
\$3,000 - \$3,600
- 16**
All Platinum Solitaire Diamond Ring, eight claw set pierced scroll gallery old European diamond approx 4.02cts
'19 replacement \$80,325
\$30,000 - \$40,000
- 17**
All Platinum Solitaire Diamond Ring, four claw set early round brilliant cut approx 1.08cts with six shoulder baguette cut and four round brilliant cut diamonds
Ring size L
'21 replacement \$14,500
\$5,000 - \$6,000
- 18**
18ct Solitaire Diamond Ring, raised six claw set round brilliant cut approx 1.51cts
Ring size Q
'21 replacement \$11,290
\$3,500 - \$4,500
- 19**
18ct Modern Fancy Diamond Cluster Ring, central four claw set radiant cut light yellow diamond approx 2.64ct with surround of 22 fancy yellow diamonds, surrounded by 56 white brilliant cut diamonds on pave set split shoulders, scroll gallery
Ring size N
'21 replacement \$29,000
\$13,000 - \$15,000
- 20**
18ct Modern Fancy Diamond Cluster Pendant, central four claw set fancy light brown cushion cut diamond approx 3.01cts with surround of 20 fancy yellow diamonds surround by 34 white brilliant cut diamonds on 18ct white gold trace link chain set with six pointer diamonds 44cm length
'21 replacement \$35,000
\$18,000 - \$22,000
- 21**
Platinum and 18ct Solitaire Fancy Yellow Diamond Ring, oval brilliant cut fancy yellow diamond approx 1.60cts with twelve round brilliant channel set shoulder diamonds
Ring size K
'21 replacement \$19,000
\$5,500 - \$7,500
- 22**
18ct Solitaire Diamond Ring, raised six claw set round brilliant cut approx 14cts
Ring size O
'21 replacement \$11,400
\$4,000 - \$5,500





29



30



47



31



48



50



49



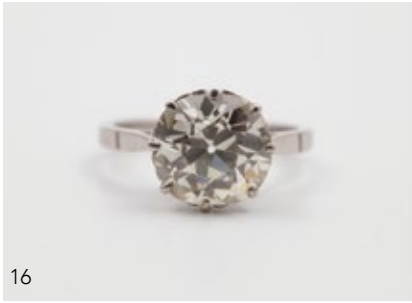
51



11



20



16



12



19



27



37



14



36



13

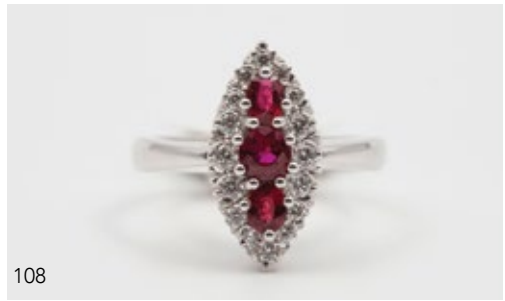


28

- 23**
All Platinum Three Stone Diamond Bridge Ring, pierced heart gallery claw set round brilliant cuts approx 1.25cts tdw
 Ring size N
 '21 replacement \$12,800
 \$4,000 - \$5,000
- 24**
18ct Solitaire Diamond Ring, raised four corner claw set princess cut approx 1cts with six shoulder diamonds
 Ring size P
 '00 replacement \$14,782
 \$5,000 - \$6,000
- 25**
14ct White Gold Three Stone Diamond Bridge Ring, modern raised four corner claw set princess cut diamonds approx 0.78cts tdw with fancy pierced gallery and shoulders diamond set
 Ring size R
 '19 replacement \$4,450
 \$1,200 - \$1,800
- 26**
18ct 15stone Emerald and Diamond Cluster Ring, central emerald cut light green emerald approx 0.70cts with scalloped square frame set with single cut diamonds
 Ring size S
 '14 replacement \$5,700
 \$1,500 - \$2,000
- 27**
18ct White Gold Sapphire and Diamond Four Leaf Clover Brooch, all individually claw set four pear cut bright blue sapphires with leaf surrounds of diamonds, centre diamonds and five baguette cuts to the stem
 In original box labelled for Brahmfeld & Gutruf of Hamberg
 '16 replacement \$11,900
 \$4,000 - \$5,000
- 28**
18ct White Gold Seven Stone Diamond and Sapphire Panel Bracelet, central claw set bridge of four round mixed cut bright blue sapphires with three round brilliant cut diamonds on wide rail link bracelet all finely textured finish 18.5cm length
 In original box for Brahmfeld & Gutruf of Hamberg
 '16 replacement \$26,000
 \$10,000 - \$14,000
- 29**
18ct 42stone Sapphire & Diamond Necklace, seven oval dark blue sapphires interspaced with diamonds supporting single sapphire and diamond cluster pendant on fine mixed curb link chain, approx 13cts tsw and 0.50cts tdw 48cm length
 '21 replacement \$12,100
 \$2,500 - \$4,000
- 30**
All Platinum 54stone Sapphire and Diamond Tennis Style Bracelet, all hinged box set alternating in threes 27 square step cut sapphires approx 8cts tsw and round brilliant cut diamonds approx 1ct tdw 17.5cm length
 '21 replacement \$11,900
 \$3,000 - \$4,000
- 31**
18ct White Gold 32stone Diamond Hinged Snap Bangle, modern channel set princess cut diamonds approx 2.92cts 57mm interior dia
 '20 replacement \$18,500
 \$6,500 - \$8,000
- 32**
18ct 46stone Diamond Hinged Snap Bangle, double rows of channel set round brilliant cut diamonds approx 1.84cts, 58mm dia
 '21 replacement \$12,700
 \$3,500 - \$4,500
- 33**
Hausmann & Co Diamond and Sapphire Ladies Watch Bracelet, 18ct yellow and white gold bold curb link bracelet supporting circular dial wrist watch with diamond and sapphire cluster hinged cover, Hausmann & Co, Rome since 1794 purveyors of fine watches and jewellery
 \$30,000 - \$35,000
- 34**
Art Deco All Platinum and Diamond Invar Ladies Cocktail Wrist Watch, rectangular dial all pave diamond diamond set with bracelet of six single cut diamonds shoulder diamond framed panels on rope chain bracelet
 \$9,000 - \$12,000
- 35**
Art Deco All Platinum Diamond Bracelet, articulated three panels of a geometric pattern with central marquise cut diamonds approx 0.96Octs tdw with six baguette cuts and 82 single cuts
 18cm length
 \$40,000.00 - \$45,000.00
- 36**
14ct Tanzanite Opal and Diamond Hinged Snap Bangle, central oval mixed cut tanzanite approx 1.44cts, with twelve black opal tablets all highlighted with channel and grain set diamonds, 6.5cm dia
 '20 replacement \$10,800
 \$3,500 - \$4,500
- 37**
18ct White Gold Eleven Stone Diamond Bracelet, claw box hinged link round brilliant cut diamonds approx 2cts tdw on fine feathered mesh bracelet 15cm length
 '14 replacement 9,475
 \$3,000 - \$5,000
- 38**
18ct White Gold Pink Tourmaline and Diamond Necklace, 20 mixed cut natural pink tourmalines each with fancy diamond set surround linked with diamond clusters, tourmalines approx 77.83cts and diamonds approx 13.57cts 45.5cm length
 '17 replacement \$74,500
 \$25,000 - \$30,000
- 39**
18ct Gold Pink Tourmaline and Diamond Bracelet, 32 mixed cut bright pink tourmalines approx 30.28cts all fancy scroll linked pave set with diamonds approx 2.03cts tdw, 18.5cm length
 '21 replacement \$19,500
 \$7,000 - \$9,000
- 40**
All Platinum Ruby and Diamond Tennis Style Bracelet, claw set eleven oval cut dark reddish pink rubies (natural inclusions) approx 37.40cts tsw each ruby with diamond surround and diamond linked, 284 round brilliant cut diamonds approx 2.58cts tdw, 17cm length
 '19 Australian Gemological Valuation Available on Request
 \$10,000 - \$15,000
- 41**
All Platinum Ruby and Diamond Pendant Earrings, each of three oval cut rubies (natural inclusions) surrounded and linked with round brilliant cut diamonds, approx 5.85cts tsw with in total 124 diamonds approx 0.85cts tdws, pierced backs
 '20 Australian Gemological Valuation Available on Request
 \$3,000 - \$5,000
- 42**
14ct Rose Gold Pink Sapphire and Diamond Fancy Floret Design Bracelet, twelve floret clusters of 72 oval cut sapphires approx 24.22ct tsw with 144 round brilliant cut diamonds approx 0.93cts tdw, 18.5cm length
 '21 Australian Gemological Valuation Available on Request
 \$6,000 - \$8,000
- 43**
14ct Rose Gold Pink Sapphire and Diamond Floret Cluster Stud Earrings, each of six oval sapphires studded with round brilliant cut diamonds, approx 3.87cts tsw and in total 26 diamonds approx 0.38cts tdw, pierced
 '21 Australian Gemological Valuation Available on Request
 \$1,200 - \$2,000



38



108



107



41



40



43



39



42

- 44**
Platinum & Gold Emerald and Diamond Tennis Style Bracelet, twelve mixed cut pear, oval and emerald medium-dark green emeralds approx 37.08cts tsw, individual cluster set with 234 round brilliant cut diamonds approx 3.75ct tdw, 18cm length '21 Australian Gemmological Valuation Available on Request \$15,000 - \$20,000
- 45**
Platinum and Gold Emerald and Diamond Cluster Stud Earrings, each of single emerald cut bright green Columbian emeralds with round brilliant cut diamond surround, in total approx 7.96cts tsw, 44 diamonds approx 0.70cts tdw, pierced '20 Australian Gemological Valuation Available on Request \$10,000 - \$15,000
- 46**
18ct White Gold Emerald and Diamond Pendant, central emerald cut bright green emerald approx 8.99 x 6.66 (1.5cts) surrounded with 20 round brilliant cut diamonds approx 1cts tdw with single round emerald suspender on fine trace link chain 48cm length (link repair) '21 replacement \$19,500 \$7,000 - \$9,000
- 47**
14ct 76stone Diamond Tennis Style Bracelet, all hinged box link set with single round brilliant cut diamond approx 1.50cts tdw, 19cm length '21 replacement \$7,000 \$2,500 - \$3,000
- 48**
18ct White Gold 51stone Diamond Tennis Bracelet, all hinged link each four claw set diamond round brilliant cut approx 3cts tdw, 17.5cm length '21 replacement \$6,400 \$1,800 - \$2,500
- 49**
18ct 97stone Diamond Tennis Type Bracelet, hinged rail rub-over set princess cut diamonds approx 2.51cts, 18cm length '21 replacement \$8,600 \$3,000 - \$4,000
- 50**
18ct White Gold Fancy 40stone Diamond Bracelet, cross and lozenge hinged panel design set with round brilliant cuts approx 2.50cts tdw, 18cm length '21 replacement \$15,600 \$4,000 - \$6,000
- 51**
14ct Yellow Gold 46stone Diamond Tennis Bracelet, all four claw set round brilliant cut fancy yellow diamonds approx 8.94cts tdw, 17cm length '21 Australian Gemological Valuation Available on Request \$6,000 - \$8,000
- 52**
18ct Yellow & White Gold Arrow Style Brooch, rub-over and pave set gems of turquoise, pearl, sapphire, peridot and 34 diamonds, with copy of original design work sheet, hand made by Henderson Jewellers, Dunedin \$5,000 - \$6,000
- 53**
18ct White Gold Celtic Style Double Swan Brooch, entwined swans with diamond set wings and ruby eyes, hand made by Henderson Jewellers, Dunedin with copy of original design work sheet \$5,000 - \$6,000
- 54**
14ct White Gold 74stone Diamond Spray Brooch, traditional design with claw, channel and pave set round brilliant cuts, marquise and baguette cut diamonds approx 1.75cts tdw '21 replacement \$9,600 \$3,000 - \$4,000
- 55**
18ct 77stone Diamond Violin Brooch, all pave set with round brilliant cut diamonds approx 0.97cts tdw '11 replacement \$6,900 \$2,500 - \$3,000
- 56**
18ct Golfing Brooch styled as a golf bag and clubs pave set with band of seven diamonds '17 replacement \$2,750 \$500 - \$700
- 57**
9ct Running Leopard Brooch, polished finish with indented spots, ruby eyes, 7.5cm length '09 replacement \$2,750 \$800 - \$1,200
- 58**
18ct White Gold Pearl and Diamond 'Sun Burst' Spray Brooch/Pendant, central 7mm cultured pearl with twelve flames pave set with six round brilliant cut diamond and 45 single cuts approx 1ct tdw '21 replacement \$7,000 \$1,500 - \$2,000
- 59**
14ct White Gold South Sea Pearl Tanzanite and Diamond Pendant Necklace, 32 cultured pearls 12.73mm supporting single heart cut tanzanite approx 12.83cts with 71 round brilliant cut diamonds surrounding approx 0.93cts tdw, four diamond filigree ball clasp 48cm length '21 Australian Gemological Valuation Available on Request \$6,000 - \$8,000
- 60**
14K White Gold Tanzanite and Diamond Pendant Earrings, each of single pear cut purplish-blue tanzanites surrounded with diamonds and four suspension diamonds, in total approx 7.92cts tsw round brilliant cuts approx 0.92cts tdw, pierced '21 Australian Gemological Valuation Available on Request \$3,000 - \$6,000
- 61**
14K White Gold Tanzanite and Diamond Cluster Drop Earrings, each of single cushion cut purplish-blue tanzanite with diamond surround in total approx 3.87cts tsw with 60 diamonds approx 0.62cts tdw, pierced shepherd hooks with lever back closures '21 Australian Gemological Valuation Available on Request \$1,500 - \$3,000
- 62**
Single Strand Slightly Graduated Cultured South Seas Pearl Necklace, 31 pearls, 10.5 mm to 15.4mm with 18ct four ring barrel clasp '21 replacement \$11,000 \$4,500 - \$6,000
- 63**
Four Uniform Strand Cultured Pearl Bracelet, 92 6.5mm Akoya pearls on 14ct clasp four scroll sections of textured finish set with eleven rubies, 18.5cm length '21 replacement \$9,390 \$2,800 - \$3,500
- 64**
Uniform Single Strand Cultured Pearl Necklace, 88 7.5mm pearls on 18ct white gold diamond floret cluster clasp 83cm length \$800 - \$1,200
- 65**
Mikimoto Single Strand Uniform Cultured Pearl Necklace, 96 6-7mm pearls on s/s clasp with Mikimoto crest, 76cm length \$1,000 - \$1,500
- 66**
18ct Cultured Pearl and Diamond Leaf Spray Brooch, design of three grape leaves with twelve cultured pearls and three pointer diamonds \$800 - \$1,200
- 67**
9ct Cultured South Sea Black Pearl and Diamond Dress Ring, central pearl 11.25mm pearl with two round brilliant cut diamonds approx 0.50cts tdw Ring size T '21 replacement \$4,650 \$1,200 - \$1,600



33



34



33



35



44



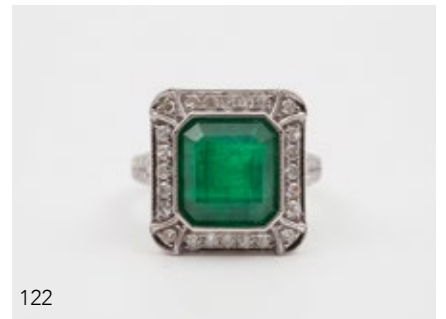
46



123



45



122



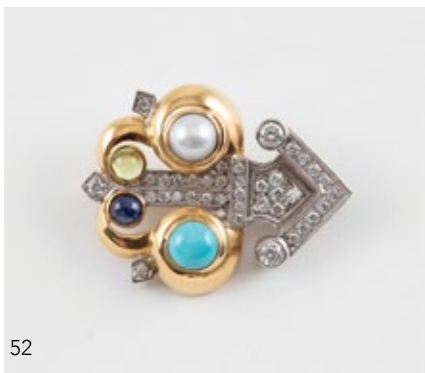
58



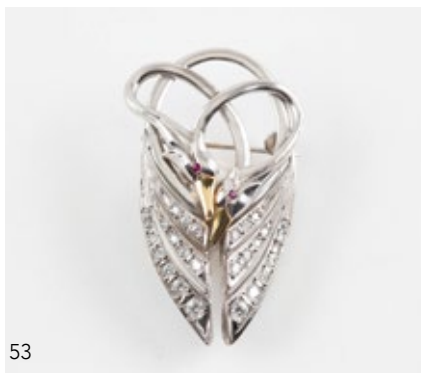
74



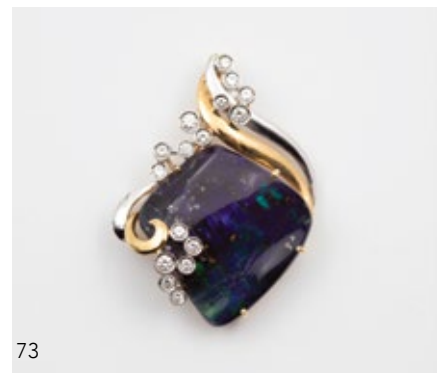
54



52



53



73



59



62



60



70



61



66



63

- 68**
18ct Single South Seas Black Pearl and Diamond Cluster Ring, central 11mm black pearl on gallery of twelve marquise brilliant cut diamonds approx 1cts tdw
 Ring size M
 '21 replacement \$6,300
 \$1,200 - \$1,600
- 69**
All Platinum Art Deco Style Single Pearl and Diamond Cluster Ring, white 7.85mm pearl on box set surround of ten single cut diamonds
 Ring size K
 '21 replacement \$3,600
 \$700 - \$1,000
- 70**
Pair 18ct Mikimoto Cultured Pearl Earrings, each of near circular cage frame of 16 pearls with pearl drop, clip backs
 \$400 - \$800
- 71**
Mikimoto Triple Uniform Strand Cultured Pearl Necklace, 66, 71, 71 creamy lustrous 5.5mm pearls on 14ct white gold clasp set with single pearl 35cm shortest length
 \$600 - \$1,000
- 72**
14ct Yellow Gold Single Lightning Ridge Opal Gents Dress Ring, scrolling rub-over set oval cabochon cut solid black, blue/green opal approx 15.25cts.
 Ring Size S 1/2.
 '20 Australian Gemmological Valuation Available on Request
 \$5,000 - \$8,000
- 73**
18ct Yellow & White Gold 17stone Boulder Opal & Diamond Pendant, large freeform squarish Queensland boulder opal dark violet green flash opal, two tone scroll frame with scattered diamonds
 '10 replacement AU\$4,000
 \$4,000 - \$5,000
- 74**
14ct White Gold White Opal and Diamond Pendant, central free form cut natural white opal approx 19.99cts, surrounded with 50 round brilliant cut fancy light champagne diamonds approx 1.48cts tdw on 14ct cable link chain featuring six round brilliant cut fancy light champagne diamonds approx 0.44cts tdw, 48cm length
 '21 Australian Gemmological Valuation Available on Request
 \$6,000 - \$10,000
- NEW ZEALAND HISTORICAL**
- 75**
NZ C19th 9ct Mounted Kiwi Beak Brooch, the gold mounts fern engraved stamped with crown & 9ct possible Frank Grady 10.5cm length
 \$3,000 - \$6,000
- 76**
NZ C19th 9ct Mounted Hui Beak Brooch, leaf bright mounts with no marks 7cm length
 \$4,000 - \$6,000
- 77**
Possible NZ C19th 9ct Mounted Kuri Tooth, extinct Early Maori dog mounted on modern 9ct chain
 \$300 - \$600
- 78**
Antarctic Terra Nova Expedition Dog Claw Brooch, 1910 - 1913 together with Discovery Expedition from 1901 to 1904 medallion
 \$4,000 - \$5,000
- 79**
NZ Colonial 9ct Mounted Boar Tusk Brooch, 9.5cm length
 \$100 - \$250
- 80**
Early C20th 9ct and Greenstone Albert Chain, eleven greenstone rails with fancy gold mounts on rope and trace chain with 'Hope' anchor pendant/fob of gold mounted greenstone rail studded with seed pearls five and citrines 56cm length
 '21 replacement \$7,870
 \$2,500 - \$3,000
- 81**
9ct Greenstone Panel Albert Chain, trace linked six greenstone panels with engraved caps, 45cm length
 \$1,500 - \$2,000
- 82**
Late Edwardian S/S and Greenstone Rail Albert Chain, four greenstone rails with rope trace link chain 40cm length, dog clip marked for Birmingham 1908 Henry Pope maker
 \$400 - \$800
- 83**
NZ Colonial 9ct Mounted Black Ribbon Braid Watch Fob, central greenstone shield (clips gold plated)
 \$100 - \$200
- 84**
NZ Colonial 9ct Mounted Black Ribbon Braid Watch Fob, 'Kia Ora' shield mount (clips gold plated)
 \$100 - \$200
- 85**
Victorian Gold Greenstone Pendant Drop Earrings, lozenge panels of greenstone framed with finely chased leaf design and twin leaves to the hooks
 \$1,500 - \$2,500
- 86**
Victorian Gold Greenstone Pendant Drop Earrings, elongated diamond shaped greenstone panels with plain mounts, finely chased bird hooks, pierced
 \$1,000 - \$2,000
- 87**
C Beeby (1815-1910) NZ Silver Brooch, design of Maori warrior in front of a whare set within a wreath of ferns and rope twist border C1880-1890 Marked C BEEBY SILVER, Charles Beeby was a Queenstown silversmith, having emigrated to NZ in 1866 from London where he was trained. He operated from premises in Rees Street 5.5cm width
 \$2,000 - \$3,000
- 88**
NZ Silver Edith E Morris, Wellington (1894-1965) Silver Spoon, heavy wire worked handle, marked STG SIL and feathered arrow emblem
 \$1,000 - \$2,000
- 89**
NZ Silver Edith E Morris, Wellington (1894-1965) Turquoise Brooch, claw set turquoise nugget on heavy wire worked platform, marked STG SIL and feathered arrow emblem
 \$2,000 - \$3,000
- 90**
NZ Silver Edith E Morris, Wellington (1894-1965) MOP Brooch, central mop circular panel on platform with four bold wire work scrolls supporting pendant
 \$1,800 - \$2,500
- 91**
NZ Silver Edith E Morris, Wellington (1894-1965) Carnelian Brooch, claw set carnelian panel on heavy wire worked platform, unmarked
 \$1,800 - \$2,500
- 92**
Elsie Reeve (NZ 1885-1927) Art Nouveau Design Silver and Moonstone Brooch, three rub-over moonstones within stylised leaf and rose individual frames supporting matching pendant, marked REEVE
 7cm x 5.5cm
 \$3,000 - \$6,000



75



76



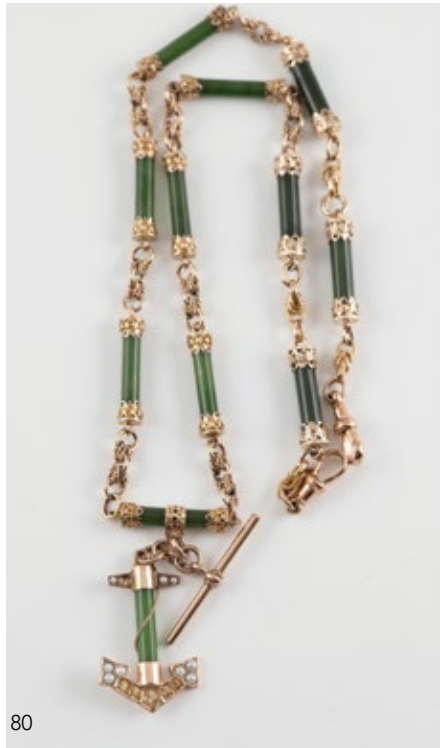
85



86



87



80



81



78



82



97



101



105



96

93
Elsie Reeve (NZ 1885-1927) Necklace, Bracelet and Ring, bracelet of four octagonal amethyst glass gems interspaced with grape vine and enamel square links, pendant of single amethyst framed with grape vine on hand worked rail chain linked with purple enamel, ring of simple form in purple enamel. This suite matching in design to works held by Auckland Museum Bracelet 19.5cm length, necklace 39cm length, ring size \$20,000 - \$30,000

94
Possible Annie Buckhurst, Christchurch (1894-1959) Brooch, enamelled oval portrait panel on hammered finish silver frame, marked STG SIL, some enamel damage \$500 - \$1,000

95
Possible Annie Buckhurst, Christchurch (1894-1959) Jewel Box, the pewter box lid embossed with fruit and central enamel circular panel of tree (repair to hinge required) 20cm length \$800 - \$1,000

96
Un-Known Arts and Crafts Shield Brooch, central opaque blue glass panel on a web design frame of silver on metal backing \$800 - \$1,500

97
Probable Frank Grady 18ct and Three Gold Nugget Bar Brooch, reverse bar engraved 'To Alice 29-7-09' marked with crown 18c \$1,200 - \$1,500

98
C1900 9ct Trace Link Bracelet, each link set with box set half pearl and seven rub-over amethysts, heart padlock clasp 19cm length In original box for Stewart Dawson & Co (NZ) Ltd \$800 - \$1,200



94

99
Victorian 15ct Single Large Citrine Bar Brooch, oval mixed cut citrine sox claw set on three split bars, in possible original box labeled R W Sargent, Hawera \$300 - \$600

100
Possible Australian Colonial 15ct Fancy Bar Brooch, double bar with gothic scrolls flanking crescent of sapphires and seed pearls, marked W D \$400 - \$800

101
Possible Australian Colonial 15ct Spray Brooch, floral spray set with seven round cut aquamarines and seed pearls, three touch marks \$200 - \$400

102
Possible NZ Colonial 9ct 17stone Ruby Doublet and Half Pearl Crescent Brooch, all box mille-grain set (one pearl missing) marked J M S \$300 - \$500

103
Victorian 15ct Single Cats Eye Brooch \$100 - \$200

104
Victorian 18ct Seven Half Pearl Band Ring, pave set with Littlejohns, Wellington case \$150 - \$300

105
NZ Silver Three Pipi Shell Form Buttons, marked SILVER \$300 - \$600

106
18ct White 29stone Tanzanite and Diamond Cluster Ring, claw set oval vivid blue brilliant cut tanzanite 7.62cts with diamond surround, two pear cut shoulder diamonds and gallery set diamonds. By Polygon Studios, Wellington Ring size P 1/2 '21 replacement \$21,000 \$5,000 - \$7,000



95

107
All Platinum 17stone Ruby and Diamond Cluster Ring, oval brilliant cut vivid red ruby approx 3.13ct with surround of round brilliant cut diamonds and side diamonds trapezoid cuts approx 1.23cts tdw. Handmade by Polygon Studios, Wellington Ring size R '21 replacement \$52,000 \$24,000 - \$28,000

108
18ct White Gold 19stone Ruby and Diamond Marquise Cluster Ring, claw bead set three central round brilliant cut deep red rubies approx 0.72cts with diamond surround. By Polygon Studios, Wellington Ring size O '21 replacement \$8,290 \$3,000 - \$4,000

109
18ct Yellow & White Gold 37stone Yellow Sapphire and Diamond Dress Ring, pear cut bright yellow sapphire mirrored pave set diamond pear dome with diamond set split shoulders. By Polygon Studios, Wellington ring size O 1/2 '21 replacement \$9,500 \$3,000 - \$4,000

110
18ct White Gold Single Tanzanite Modern Dress Ring, rub-over set natural tanzanite crystal approx 35.0cts on wide shoulders scattered with princess cut diamonds. Handmade by Polygon Studios, Wellington Ring size Q '21 replacement \$10,000 \$8,000 - \$10,000

111
18ct Yellow & White Gold 13stone Sapphire and Diamond Cluster Ring, four claw set oval mixed cut deep blue sapphire approx 2.51cts with diamond surround. Handmade by Polygon Studios, Wellington Ring size K '19 replacement 14,500 \$7,000 - \$9,000



93



92



89



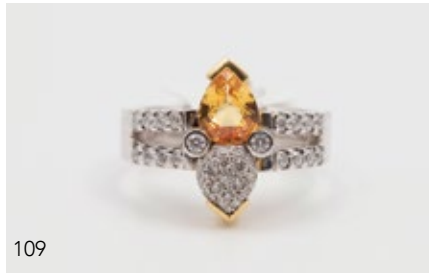
90



91



109



109



110



111



112



112a

112
18ct White Gold 13 Stone Aquamarine and Diamond Ring, central four corner claw set octagonal step cut light blue aquamarine approx 1cts with pave set shoulder diamonds. By Polygon Studios, Wellington
 Ring size N
 '21 replacement \$5,450
 \$2,000 - \$3,000

112a
18ct Yellow & White Gold Nine Stone Malaia Garnet and Diamond Bridge Ring, modern rub-over set oval brilliant cut green garnet approx 1.28cts with channel set round brilliant cut diamonds. Handmade by Polygon Studios, Wellington
 Ring size N 1/2
 '21 replacement \$6,490
 \$2,000 - \$3,000

113
18ct Yellow & White Gold Single Orange Sapphire Leaf Brooch, modern design of embossed diaper pattern leaf with fine textured finish set with single orange sapphire pear cut approx 1.68cts. By Polygon Studios, Wellington
 '21 replacement \$9,890
 \$6,000 - \$7,000

114
Tony Williams of Dunedin 18ct Pink Pearl Swivel Ring, circular swivel panel set with mabe pearl with two pink tourmalines to side edge C2004
 Ring size N
 \$1,000 - \$1,600

115
The Village Goldsmith S/S & Seven Stone Peridot Torque Collar, the collar supporting finely faceted light green peridots, boxed
 \$600 - \$900

116
Mikimoto 14ct Modern Design Southern Cross Brooch, the five stars set with single pink tint 4mm cultured pearl
 \$400 - \$600

117
NZ Silver Patoni Dragon Brooch, stamped Patoni Sterling 9cm length
 \$250 - \$500

118
Lynn Kelly New Zealand Jeweller Christchurch S/S Bracelet, heavy trace link with ten charms attached
 \$500 - \$800

119
14ct Rose and White Gold 17stone Aquamarine and Diamond Cluster Ring, four claw set oval cut light greyish-blue aquamarine approx 8.18cts surrounded with 16 round brilliant cut diamonds approx 1.35cts tdw.
 Ring Size Q
 '20 Australian Gemmological Valuation Available on Request
 \$2,000 - \$4,000

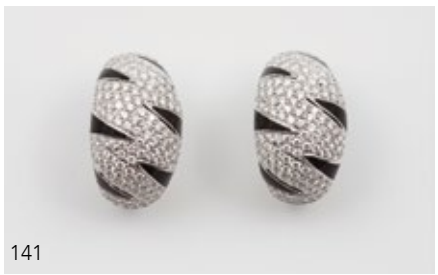
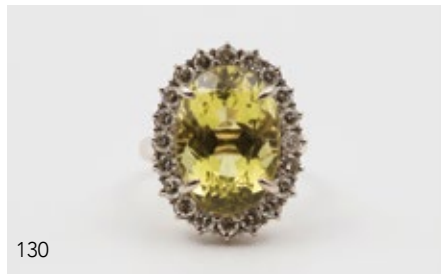
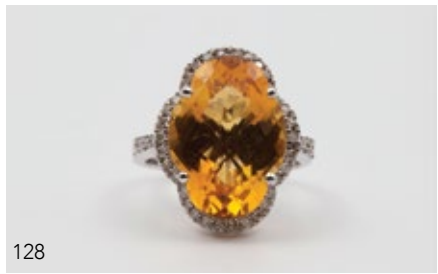
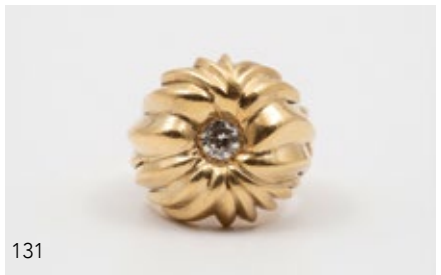
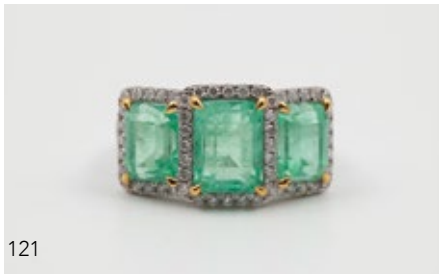
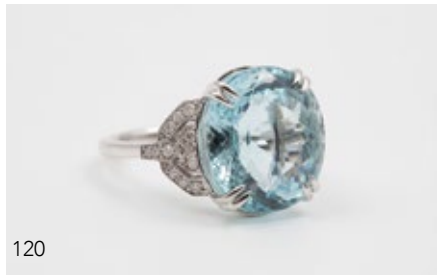
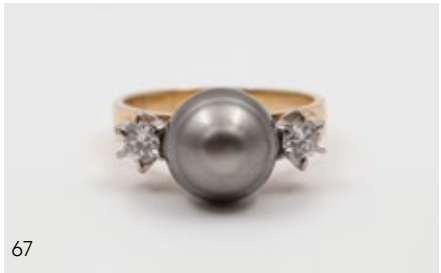
120
14ct White Gold Single Aquamarine Dress Ring, double four claw set oval cut medium blue aquamarine approx 12.53cts with 20 round brilliant cut shoulder diamonds pave set approx 0.23cts tdw
 Ring Size Q 1/2
 '21 Australian Gemmological Valuation Available on Request
 \$1,500 - \$3,000

121
14ct White & Yellow Gold Columbian Emerald and Diamond Bridge Ring, three emerald cut bluish green emeralds approx 5.91cts tsw all pave framed with 70 round brilliant cut diamonds approx 0.55cts tdw
 Ring Size M.
 '21 Australian Gemmological Valuation Available on Request
 \$4,000 - \$8,000

122
14ct White Gold 55stone Emerald & Diamond Cluster Ring, central emerald cut, dark green emerald approx 6.35cts surrounded with beaded set 24 single cut diamonds, band set with 30 single cut diamonds, total diamond weight approx 0.61cts.
 Ring Size M.
 '21 Australian Gemmological Valuation Available on Request
 \$3,000 - \$6,000

123
14ct White Gold Emerald and Diamond Triple Cluster Ring, three round mixed cut bright green emeralds with pave set diamond surrounds on raised pierced gallery
 Ring size T
 '14 replacement \$4,590
 \$1,200 - \$1,600

124
18ct White Gold 49stone Amethyst & Diamond Cluster Ring, central rectangular amethyst approx 4.80cts with diamond surround
 Ring size H
 '19 replacement \$4,900
 \$1,400 - \$1,800





132



133



136



145



134



150

125
18ct 28stone Diamond Cluster Ring, raised rectangular platform pave set in four rows of round brilliant cut diamonds approx 2.56cts tdw. Ring size X
 '21 replacement \$18,675
 \$6,000 - \$8,000

126
14ct Diamond Cluster Cocktail Ring in Two Parts, central solitaire diamond round brilliant cut approx 1.20cts with two shoulder baguette cut diamonds, surrounded by split two side clusters of individual raised set twelve baguette cuts and 16 round brilliant cut diamonds approx 1.64cts tdw
 '15 replacement \$25,829 and \$7,179
 \$12,000 - \$15,000

127
18ct white Gold Solitaire Diamond Ring, central four claw set round brilliant cut diamond approx 0.51cts on fancy shoulders diamond set together with matching 9ct diamond set wedding band (one diamond missing)
 Ring size N
 '20 replacement \$12,800
 \$4,500 - \$5,500

128
18ct White Gold 43stone Citrine and Diamond Cluster Ring, shaped oval all faceted cut deep yellow citrine approx 11.43cts with surround and shoulders of round brilliant cut diamonds
 Ring size O
 '21 replacement \$5,600
 \$1,200 - \$1,800

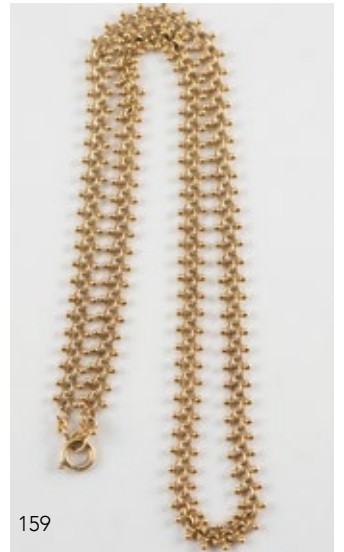
129
Pair 18ct White Gold Citrine and Diamond Pendant Earrings, each of central heart shape faceted deep orange citrine with surround and hoops diamond set, pierced
 '21 replacement \$5,500
 \$1,400 - \$1,800

130
14ct White Gold 21stone Green Quartz and Diamond Cluster Ring, central four claw set oval mixed cut light green quartz approx 13.50cts with surround crown claw set round brilliant cut diamonds approx 1.50ct
 Ring size P
 '21 replacement \$7,900
 \$2,000 - \$3,000

131
18ct Solitaire Diamond Dress Ring, sculptured flame burst design with central round brilliant cut diamond approx 0.48cts
 Ring size K 1/2
 '21 replacement \$11,500
 \$3,000 - \$4,000

132
14ct 70stone Diamond Tennis Style Bracelet, all box hinged link set with single round brilliant cut diamond approx 2cts tdw, 19cm length
 '21 replacement \$6,900
 \$2,200 - \$2,800

133
14ct 56stone Emerald and Diamond Tennis Bracelet, all hinged link four claw set round mixed cut emeralds approx 1.50cts tsw interspaced every six emerald with single diamond, 18cm length
 '21 replacement \$4,900
 \$1,400 - \$1,800





161



162



163



164

134
18ct 81stone Sapphire and Diamond Tennis Style Bracelet, hinged links of oval dark blue sapphires interspaced with two round brilliant cut diamonds, approx 8.10ct tsw and approx 54cts tdw, 18cm length
 '21 replacement \$8,400
 \$2,500 - \$3,500

135
14ct White Gold 98stone Diamond Fancy Bracelet, design of open oval panel linked with three rub-over diamonds round brilliant cuts approx 2cts tdw 18.5cm length
 '21 replacement \$9,300
 \$2,200 - \$3,000

136
14ct 240stone Diamond Bracelet, hinged convex panels each with three channel set with twelve round brilliant cut diamonds approx 3.50cts tdw, 19cm length
 '21 replacement \$10,400
 \$3,000 - \$4,000

137
18ct White Gold 20stone Diamond Heart Pendant, open design round brilliant cut diamonds all four claw set approx 1cts tdw on 18ct fine box link neck chain 40cm length
 '04 replacement \$2,300
 \$600 - \$1,000

138
14ct 50stone Diamond Heart Pendant, all claw bead set single cuts approx 1cts tdw
 '21 replacement \$3,500
 \$800 - \$1,200

139
18ct Ruby and Diamond Necklet, double rail knot design all channel set with 101 rubies and 44 pave set round brilliant cut diamonds on fine curb link chain, 45cm length
 '21 replacement \$6,200
 \$1,800 - \$2,500

140
18ct White Gold Single Green Fluorite and Diamond Pendant, emerald cut bright green fluorite with 24 individual claw set diamond surround approx 2.60cts on 18ct white gold trace link chain 44cm length
 '08 replacement \$22,000
 \$7,000 - \$9,000

141
Pair 18ct White Gold Diamond Hoop Earrings, each dome pave set with diamonds and striped with black enamel in the Cartier manner, approx 3.48cts tdw, pierced and clip backs
 '17 replacement \$15,000
 \$5,000 - \$6,000

142
Pair 18ct White Gold Diamond Cuff Links, each of 16 princess cut diamonds within stepped rib square frame approx total diamonds weight 0.74cts
 '21 replacement \$3,900
 \$1,500 - \$1,800

143
14ct White Gold Jade and Diamond Floral Spray Brooch, triple spray of ten bright green jade lozenge petals highlighted with six single cut diamonds
 \$400 - \$800

144
10ct Single Diamond Filigree Brooch, lozenge shape with central round brilliant cut approx 0.25cts
 '21 replacement \$2,900
 \$500 - \$800

145
18ct Sapphire and Diamond Bracelet, five four bead claw set deep blue oval sapphires interspaced with diamond clusters of four round brilliant cut diamonds total 16 approx 0.34cts tdw on flat curb link bracelet, 17.5cm length
 '17 replacement \$4,700
 \$1,200 - \$1,500

146
18ct Nine Stone Sapphire and Diamond Cluster Bar Brooch, centrally claw set round sapphire with diamond surround
 '19 replacement \$3,250
 \$800 - \$1,200

147
18ct Wide Mesh Bracelet, woven link 19cm length approx 47gm (showing wear)
 \$4,000 - \$4,500

148
9ct Charm Bracelet, double curb link bracelet with 24 charm, heart padlock clasp 17cm length
 '20 replacement \$8,500
 \$3,500 - \$4,500

149
Victorian 15ct Curb Link Charm Bracelet, 13 various gold and plated charms including 1915 half sovereign, large circular mixed cut citrine
 \$2,000 - \$2,500

150
Italian 9ct Tri-Colour Gold Bracelet, modern bold double circle link with notch cut finish in white, yellow and rose approx 36gms
 \$800 - \$1,400

151
14ct Hinged Snap Bangle, half bright-cut engraved with notch pattern 6.5cm dia in original box for Paul Lietz, Uslar Germany
 \$500 - \$800

152
9ct Plain Gold Bangle, 68mm, 66mm dia's approx 45gms
 \$1,200 - \$1,400

153
18ct Fancy Beaded Rope Neck Chain, 80cm length
 '21 replacement \$5,600
 \$1,700 - \$2,000

154
18ct Modern All Articulated Necklet, concave design with bright cut edging, polished finish on mesh reserve, 42cm length
 \$2,500 - \$3,000

155
18ct Modern Flat Mixed Curb Link Neck Chain, 48cm length approx 66gms
 \$3,500 - \$4,500

156
9ct Rose Gold Graduated 'Byzantine' Link Neck Chain, 42cm length
 '20 replacement \$6,400
 \$2,500 - \$3,000



175



184



178



179



180



181



182



186



188



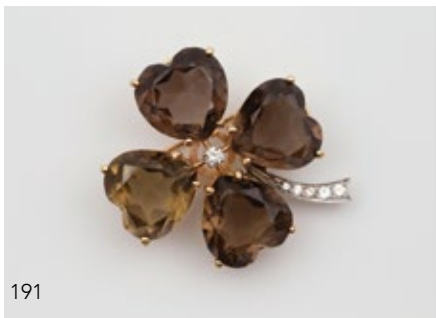
190



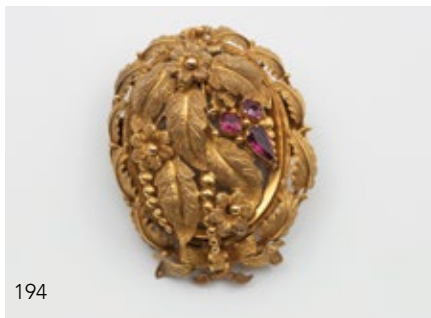
189a



187



191



194



192

- 157**
9ct Fancy Multi-Trace Link Necklet, 47cm length approx 32gms
\$1,000 - \$1,400
- 158**
14ct Fancy Multi Flat Curb Link Necklet, 46cm length approx 32gm
\$1,400 - \$1,600
- 159**
14ct Modern Fancy Double Curb Link Necklace, with beaded edge finish 45cm length in original box for Walter Helling, Uslar Germany
\$700 - \$1,000
- 160**
1863 Victoria Gold Sovereign, with engravers initials WW for William Wyon
\$600 - \$800
- 161**
1915 GeoV Gold Sovereign
\$600 - \$800
- 162**
1873 Victoria Gold Sovereign, Sydney mint in 9ct bright cut frame and rope twist pendant mount
\$700 - \$800
- 163**
Two 1887 Gold Half Sovereigns, mounted as earrings pierced
\$700 - \$900
- 164**
9ct Victoria Coin Dress Ring, plain gallery with bright cut frame to the coin
Ring size W
'14 replacement \$3,000
\$800 - \$1,200
- 165**
9ct Sovereign Case, plain circular with engraved initial monogram
\$800 - \$1,000
- 166**
9ct Graduated Curb Link Albert Chain, with attached gold plated sovereign, Albert approx 47.6gm 48cm length
\$3,000 - \$4,000
- 167**
22ct Fancy Rail Link Neck Chain, 53cm length approx 11gms
\$600 - \$800
- 168**
18ct Modern Curb Link Neck Chain, 40cm length approx 8gms
\$400 - \$600
- 169**
Victorian 15ct Fancy Link Albert Chain, with tassel fob approx 50.5gm 44cm length
\$6,000 - \$8,000
- 170**
9ct Trace and Rope Link Albert Chain Necklace, with 9ct mounted faceted cut citrine swivel fob pendant 45cm length
\$1,500 - \$2,000
- 171**
9ct Bloodstone Seal Fob, on 9ct uniform curb link neck chain 24gm 48cm length
\$2,000 - \$2,500
- 172**
18ct Flat Facet Curb Link Muff Chain, 144cm length approx 22gms
\$1,000 - \$1,400
- 173**
Victorian 15ct Fine Rope Twist Link Muff Chain, 138cm length (two near invisible repairs)
\$2,000 - \$2,600
- 174**
Early C20th Edwardian 9ct Rope Trace Link Albert Chain, 38cm length
'21 replacement \$5,110
\$1,600 - \$2,000
- 175**
15ct Fancy Link Neck Chain, with attached gold plate seal fob, smokey quartz initialed panel 39.5cm length
\$400 - \$600
- 176**
Pair 14ct Lorgnettes, telescopic two section handle with white enamel decorations
\$600 - \$1,000
- 177**
18ct Curb Link Bracelet, attached with 18ct cross charm approx 40.7gm 22cm length
\$4,000 - \$5,000
- 178**
Victorian 9ct Fancy Link Bracelet, beaded double trace link with spring expansion, head of single pear cut amethyst with horse-shoe surround of turquoise, shoulders set with half pearls and turquoise
\$500 - \$800
- 179**
Boxed Victorian 15ct Hinged Snap Bangle, set with two ruby and sapphire 6cm dia approx 8gms faults
\$300 - \$500
- 180**
Edwardian 15ct Half Engraved Hinged Snap Bangle, engraved inscription dated 1911 58mm internal dia
'21 replacement \$4,230
\$1,400 - \$1,800
- 181**
Edwardian 9ct Fancy Hinged Snap Bangle, double twist open framed with lozenge head set with three rubies and two chips approx 9.80gms
\$1,500 - \$1,800
- 182**
Edwardian 9ct Fancy Hinged Snap Bangle, three scroll blade panels each set with two rubies and single diamond with rope work applied leaf vine (two replacement diamonds) approx 11.2 gm, marked Birmingham 1912
\$1,400 - \$1,600
- 183**
Victorian 15ct Rail Link Bracelet, or short Albert chain 19cm approx 27gm
\$600 - \$900
- 184**
9ct Turquoise Hinged Snap Bangle, continuous pierced floret pattern all turquoise set 6cm dia (one turquoise missing)
'17 replacement \$5,000
\$1,800 - \$2,200
- 185**
14ct Turquoise Leaf Spray Brooch, six stems all pave set with turquoise
'17 replacement \$2,300
\$400 - \$600
- 186**
Late C19th European (French) 14ct and Diamond Spray Brooch, floral spray of central flower head with spray leaves and buds all set with old rose cut diamonds, brooch clip detachable for tiara mounting, the brooch has touch marks (one small diamond missing)
\$800 - \$1,400
- 187**
Late C19th European Silver Citrine and Diamond Brooch, oval mixed cut citrine shallow cut with fancy frame all set with rose cut diamonds
\$300 - \$600
- 188**
Edwardian 18ct Burmese Sapphire and Diamond Curve Bar Brooch, nine light blue mixed cut sapphires approx 0.576ct, 6x 0.574-0.382ct, 0.416ct, 0.263ct interspaced with 16 old eight cut diamonds approx 0.320cts tdw
'21 replacement \$30,280
\$11,000 - \$15,000
- 189**
18ct Eleven Stone Ruby and Diamond Bar Brooch, three crown claw set oval mixed cut bright red rubies interspaced with diamonds and leaf blade shoulder set with diamonds, in original box. for Prouds Ltd 187 Pitt St, Sydney and London
\$2,000 - \$3,000
- 189a**
C19th European 9ct Single Aquamarine Brooch, oval mixed cut aquamarine approx 42cts framed with ornate leaf and wire work scrolls and scrolling rim
'05 replacement \$8,000
\$2,000 - \$3,000



190
Pair 9ct Victorian Style Aquamarine Pendant Drop Earrings, each of filigree lozenge drop set with single pear cut and three oval cut light aquamarines
 \$400 - \$800

191
14ct Smokey Quartz Four Leaf Clover Brooch, four heart mixed cut smokey quartz approx 38.0cts tsw with central diamond and stem of five graduated diamonds
 '21 replacement \$7,600
 \$1,600 - \$2,200

192
Victorian 9ct Almandine Garnet Crescent Brooch, scroll claw set seven graduated garnets interspaced with set pearls
 \$300 - \$500

193
Boxed Victorian 9ct and Silver Ruby and Diamond Bar Brooch, four round brilliant cut rubies with scroll spray pave set ten old mine cut diamonds
 '21 replacement \$1,795
 \$500 - \$800

194
Victorian 15ct Photo Panel Brooch, oval form all of fine chased leaf design set with three foil backed amethysts, hinged front panel revealing photo panel
 \$900 - \$1,200

195
Victorian 15ct 'Sweetheart' Ring, central raised heart shape all pave set with rose cut diamonds within surround of half pearls together with pair 9ct pendant circlet earrings, pierced
 Ring size K
 \$300 - \$600

196
Early C19th Ornate Diamond Paste Chatelaine Key Pendant, silver and gold mounted diamond pastes in a foliate design supporting pocket watch key on demountable matching necklace of hinged link star clusters and single pastes on fine silver trace link chain 67cm length
 \$800 - \$1,200



197
Victorian Silver Gilt Framed Taj Mahal Brooch, oval ivory panel finely painted with iconic view of Taj Mahal in embossed frame
 \$350 - \$500

198
Victorian Pique Tortoise Shell Brooch, circular dome brooch all finely inlaid with gold and silver
 \$250 - \$500

199
Victorian Onyx and Single Diamond Photo Locket, plain oval form with scroll set old rose cut diamond
 \$500 - \$800

200
S/S Arts & Crafts Buckle By Archibald Knox For Liberty & Co 1905, double heart shaped, organic scroll design with turquoise and blue enamel, Birmingham 1905
 \$2,000 - \$3,000

201
Liberty & Co Art Nouveau S/S Belt Buckle, square shape with pierced stylised organic floral design, London 1900, 6cm x 6cm
 \$500 - \$750

202
William Hair Haseler for Liberty S/S and Greenstone Buckle, Arts and Crafts gothic design two piece buckle set with six greenstone panels marked W H H Sterling
 \$1,400 - \$2,000

203
Edw VII S/S Buckle, rectangular shape with gadroon border, Birmingham 1907
 \$50 - \$100

204
Victorian S/S Vinaigrette, shaped oblong leaf engraved, pierced grill with pendant ring, Birmingham 1891
 \$150 - \$300

205
GeoIV S/S Vinaigrette, all machine bright-cut engraved with embossed rims Birmingham C1825 maker John Bettridge, on modern s/s trace link neck chain 46cm length
 \$200 - \$400



206
Unmarked Silver Pocket Watch Fob Chain, commemorating Queen Victoria Golden Jubilee 1837-1887 with engraved and portrait shield, crown mounts and orb pendant
 \$200 - \$400

207
Heavy S/S Curb Link Bracelet, with heart padlock clasp approx 114gms
 \$260 - \$500

208
Friedrich Binder (FBM) Germany .835 Heavy Curb Link Bracelet, with belt buckle clasp, name engraved 26cm length
 \$260 - \$500

209
18ct Three Stone Sapphire & Diamond Bridge Ring, central four corner claw set octagonal step cut medium blue sapphire with round brilliant cut diamonds approx 0.54cts tdw
 Ring size R
 '21 replacement \$7,500
 \$1,800 - \$2,500

210
18ct White Gold Eleven Stone Emerald and Diamond Ring, raised claw set central oval mixed cut medium green emerald approx 0.81cts (chip to stone) with surround of individual set diamonds and two baguette cut shoulder diamonds
 Ring size O
 '17 replacement \$8,000
 \$2,000 - \$2,500

211
14ct White Gold 29stone Sapphire and Diamond Dress Ring, central raised six claw set oval mixed cut dark blue sapphire approx 2.15cts on cross-over shoulders bead claw set with 28 diamonds
 Ring size N
 '21 replacement \$5,800
 \$1,200 - \$1,800



216



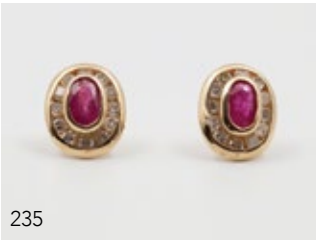
238



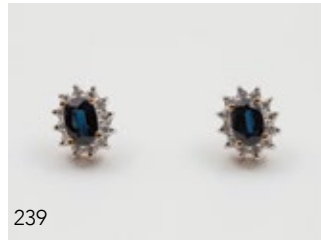
240



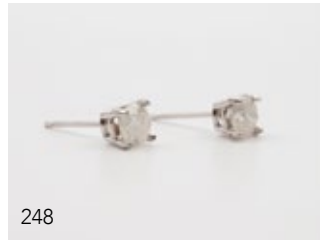
247



235



239



248



217

212
14ct White Gold 38stone Emerald and Diamond Cluster Ring, raised cage claw set central pear cut light green emerald approx 2.15cts with two tier surround of individual set round and baguette cut diamonds approx 2.25cts tdw
 Ring size S
 '21 replacement \$10,500
 \$3,000 - \$4,000

213
18ct 26stone Emerald and Diamond Cluster Ring, central raised three claw set bright green pear cut emerald approx 2.15cts with surround of pave and individual set baguette, marquise and round cut diamonds approx 1.50cts tdw
 Ring size K 1/2
 '21 replacement \$12,200
 \$3,000 - \$4,000

214
14ct 55stone Emerald and Diamond Fancy Dress Ring, 'S' shape sculptured band supporting marquise set double diamonds and single light green square step cut emerald approx 0.50cts
 Ring size N 1/2
 '21 replacement \$7,200
 \$2,000 - \$3,000

215
14ct Solitaire Diamond Ring, raised five claw set pear brilliant cut diamond approx 0.80cts with two marquise cut shoulder diamonds
 Ring size N
 '21 replacement \$6,900
 \$2,200 - \$3,000

216
Pair 18ct White Gold Diamond Pendant Drop Earrings, each of suspended row os pave set diamonds supporting oval pendant approx 1ct tdw for pair, pierced
 '21 replacement \$6,100
 \$1,600 - \$2,200

217
Pair 14ct White Gold Diamond Hoop Earrings, each channel set with six round brilliant cut diamonds, pierced
 '21 replacement \$3,600
 \$800 - \$1,200

218
14ct Five Stone Diamond Buckle Band Dress Ring, buckle design set with central diamond approx 0.36cts with four single cuts
 Ring size T
 '21 replacement \$4,790
 \$800 - \$1,200

219
10k Ten Stone Diamond Eternity Band, channel set round brilliant cut diamonds approx 0.50cts tdw
 Ring size Y
 '15 replacement \$1,700
 \$500 - \$700

220
18ct White Gold Solitaire Diamond Ring, modern design rub-over set round brilliant cut approx 0.26cts with eight channel set shoulder diamonds and six single cut diamonds to the gallery
 Ring size J
 '19 replacement \$6,500
 \$1,600 - \$2,000

221
18ct White Gold Five Stone Bridge Ring, scroll four claw set central row of round brilliant cut diamonds approx 0.73cts tdw, edged with 20 single cut diamonds on pierced fancy gallery
 Ring size O
 \$2,000 - \$2,500

221a
18ct Three Stone Emerald and Diamond Bridge Ring, double claw set central oval brilliant cut bright green emerald approx 1.5cts with two round brilliant cut diamonds approx 0.36cts tdw
 Ring size M
 '19 replacement \$7,900
 \$2,500 - \$3,000

222
14ct 17stone Ruby and Diamond Band Ring, central rub-over cushion cut deep red ruby with sixteen gypsy set round brilliant diamonds
 Ring size M
 '12 replacement \$3,780
 \$600 - \$800

223
9ct Pink Jade and Gem Dress Ring, circular pink jade panel with central round facet cut amethyst, four pointer diamonds and four pink peridot heart set to the outer rim
 Ring size N
 \$1,000 - \$2,000

224
18ct Twelve Stone Ruby Band Ring, double pave set band of round native cut deep red rubies
 Ring size M
 \$500 - \$800

225
18ct White Gold 27stone Sapphire and Diamond Princess Style Cluster Ring, central all individual claw set two rows of twelve round brilliant cut diamonds with surround of marquise cut dark blue sapphires
 Ring size Q 1/2
 '21 replacement \$7,400
 \$2,200 - \$3,000



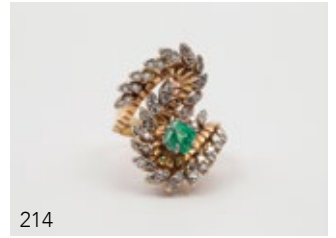
210



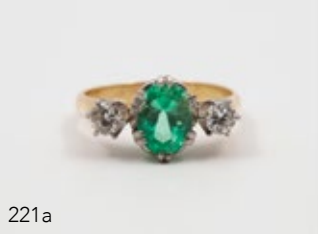
212



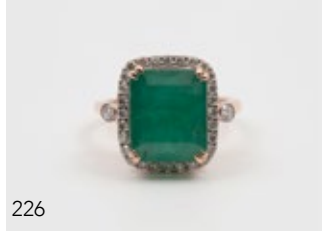
213



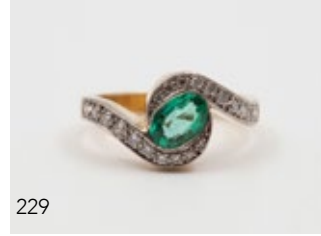
214



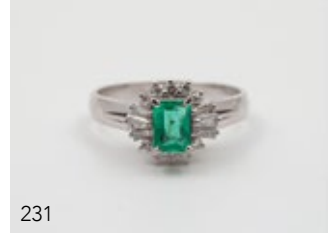
221a



226



229



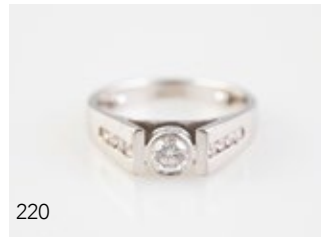
231



218



219



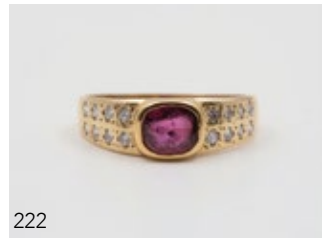
220



221



92



222



223



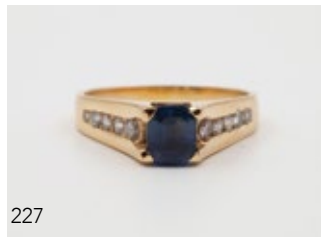
224



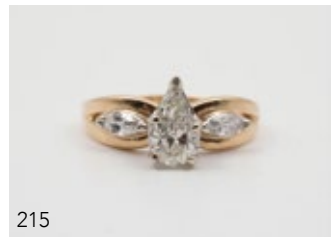
225



211



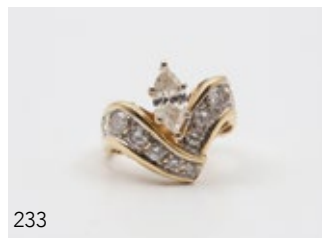
227



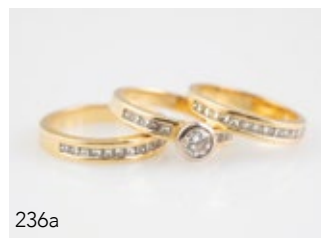
215



230



233



236a



246



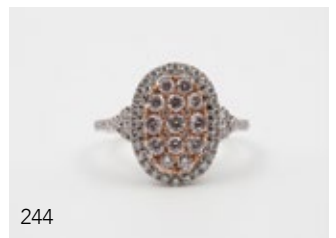
237



241

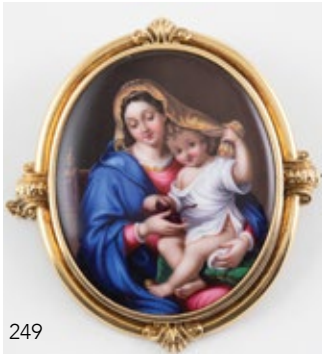


242

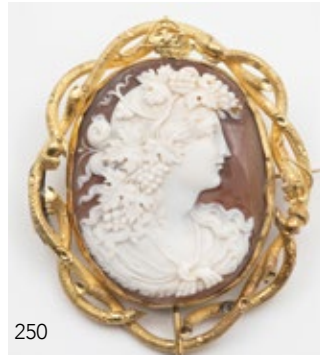


244

- 226**
14ct 29stone Emerald and Diamond Cluster Ring, central, emerald cut, bluish-green emerald approx 6.84cts (with visible flaw) double 4-claw set, with 26 round brilliant cut diamonds surrounding and two shoulder diamonds approx 0.55cts tdw
 Ring size O
 '20 Australian Gemological Valuation
 Available on Request
 \$2,000 - \$3,000
- 227**
14ct White Gold 13stone Sapphire and Diamond Ring, raised six claw set round mixed cut deep blue sapphire approx 0.90cts with twelve bead claw set shoulder diamonds
 Ring size I
 '21 replacement \$4,500
 \$1,000 - \$1,500
- 228**
14ct Solitaire Diamond Ring, raised four claw set round brilliant cut approx 0.340cts
 Ring size O
 '21 replacement \$1,990
 \$400 - \$800
- 229**
18ct 21stone Emerald and Diamond Dress Ring, central oval brilliant cut bright green emerald approx 0.70cts with cross-over shoulders all pave set with diamonds
 Ring size L
 '21 replacement \$6,795
 \$1,500 - \$2,000
- 230**
Early C20th Three Stone Emerald Bridge, traditional scroll claw set three bright green emeralds approx 0.481ct, 0.107ct, 0.116ct interspaced with four rose cut diamonds, hallmarked Birmingham 1915
 Ring size P
 '21 replacement \$4,230
 \$1,400 - \$1,600
- 231**
All Platinum 17stone Emerald and Diamond Cluster Ring, central four claw set rectangular step cut bright green emerald approx 0.41cts with surround of round brilliant and baguette cut diamonds
 Ring size L 1/2
 '21 replacement \$6,000
 \$1,500 - \$2,000
- 232**
9ct White Gold 14stone Diamond Band Ring, modern design domed band channel set curved of round brilliant cut diamonds approx 0.38cts tdw
 Ring size U
 '21 replacement \$4,350
 \$800 - \$1,200
- 233**
14ct 12stone Diamond Dress Ring, raised six claw set marquise cut diamond approx 0.85cts on chevron band pave bead set round brilliant cuts approx 1.15cts
 Ring size L 1/2
 '21 replacement \$4,900
 \$3,400 - \$10,300
- 234**
18ct 23stone Ruby and Diamond Ring, central four claw set oval mixed cut bright red ruby approx 0.70cts with swirl surround of channel set diamonds approx 0.55cts
 Ring size L
 '21 replacement \$7,500
 \$2,200 - \$3,000
- 235**
Pair 14ct Ruby and Diamond Stud Cluster Earrings, each of central rub-over set oval ruby twelve stone diamond surround, pierced
 '21 replacement \$2,200
 \$500 - \$800
- 236**
18ct White Gold Nine Stone Sapphire and Diamond Band Ring, central round mixed cut dark blue sapphire on fancy filigree shank set with eight diamonds
 Ring size M
 '21 replacement \$3,600
 \$800 - \$1,200
- 236a**
Trio 18ct Solitaire Diamond Ring and Two Diamond Wedding Bands, modern raised rub-over round brilliant cut with ten channel set princess cut diamonds, matching bands each channel set with 13 princess cut diamonds
 Ring size K
 '04 replacement \$7,289
 \$1,700 - \$2,200
- 237**
Platinum and 18ct White Gold Solitaire Diamond Ring, raised six claw set pear brilliant cut diamond approx 0.70cts, shoulders set with four sapphire and four diamonds on split band
 Ring size N
 '21 replacement \$17,900
 \$4,000 - \$6,000
- 238**
18ct Sapphire and Diamond Pendant Drop Earrings, each of four claw set oval dark blue sapphire edged in groups of three twelve diamonds suspended on three rails link with single diamonds, pierced
 '21 replacement \$6,300
 \$1,400 - \$2,000
- 239**
Pair 14ct Sapphire and Diamond Stud Earrings, each of raised claw central oval sapphire with surround of twelve diamonds, pierced
 '21 replacement \$2,700
 \$700 - \$1,000
- 240**
14ct White Gold Sapphire and Diamond Pendant, double cluster drop of oval and pear cut sapphire with single cut diamond surrounds
 '21 replacement \$1,800
 \$400 - \$600
- 241**
14ct 15stone Cabochon Sapphire and Diamond Cluster Ring, double four claw set oval dark blue cabochon sapphire with diamond surround
 Ring size N
 '21 replacement \$4,000
 \$1,000 - \$1,400
- 242**
14ct White Gold 16stone Blue and White Diamond Fancy Bridge Ring, all raised bead claw set central six princess cut diamonds flanked with princess cut blue diamonds approx 1.50cts tdw
 Ring size N
 '21 replacement \$5,200
 \$1,400 - \$1,800
- 243**
14ct 41stone Emerald and Diamond Cluster Ring, raised cage bead claw set swirl design
 Ring size M
 '21 replacement \$4,400
 \$1,000 - \$1,500
- 244**
14ct White & Rose Gold 55stone Diamond Cluster Ring, central oval panel of thirteen very light fancy pink round brilliant cut diamonds approx 1cts with surround and shoulders of round brilliant cuts
 Ring size O
 '21 replacement \$7,000
 \$2,000 - \$3,000
- 245**
14ct Solitaire Diamond Band Ring, modern design raised four claw round brilliant cut approx 0.40cts on triple banded shoulders channel set with 18 diamonds
 Ring size S
 '21 replacement \$3,600
 \$1,000 - \$1,400
- 246**
10ct White Gold 39stone Diamond Cluster Ring, central dome cluster with cross-over shoulders pave set with baguette cut diamonds approx 1cts tdw
 Ring size R
 '21 replacement \$2,400
 \$600 - \$900
- 247**
14ct White Gold Diamond Pendant Drop Earrings, modern design each of articulated two bars linked with offset squares all pave set with diamonds, pierced
 '21 replacement \$4,800
 \$1,200 - \$1,600



249



250



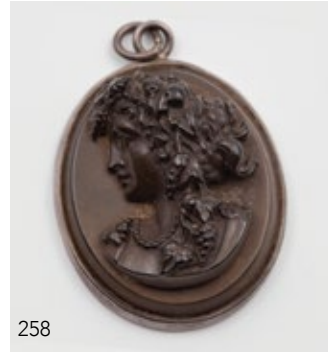
253



251



259



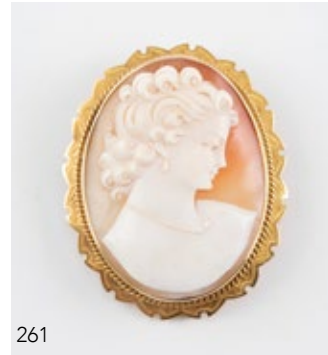
258



252



260



261



254



262



255

- 248**
14ct White Gold Single Diamond Stud Earrings, each of four claw set round brilliant cut approx 1.33cts tdw, pierced '21 replacement \$3,500
\$1,000 - \$1,400
- 249**
Victorian 9ct Framed Enamel Brooch, painted with classical image of Madonna and Child 6cm with original box (damage to hinge)
\$300 - \$500
- 250**
C1880 Victorian 15ct Cameo Classical Portrait Swivel Brooch, depicting the Grecian Goddess Demeter associated with the seasons in ornate frame 7cm length
\$1,000 - \$2,000
- 251**
Large Victorian 9ct Framed Cameo Brooch, classically carved with guardian angel standing over a child 7cm, natural creasing to shell
\$300 - \$500
- 252**
Late Victorian 9ct Framed Cameo Pendant, high relief carved classical female portrait 5cm
\$200 - \$400
- 253**
Victorian 9ct Framed Cameo Brooch, carved high relief Apollo and Artemis and attendant full length figures, some markings to the back of cameo '05 replacement \$1,600
\$200 - \$400
- 254**
Victorian S/S Framed Cameo Portrait Brooch, high relief carved with bearded gent
\$100 - \$200
- 255**
Victorian 9ct Mounted Cameo Classical Portrait Pendant
\$100 - \$200
- 256**
Victorian 9ct Mounted Cameo Bracelet, seven graduating oval panels with high relief carved classical portraits 19.5cm length '06 replacement \$1,995
\$400 - \$800
- 257**
C1880 Victorian 15ct Framed Lava Cameo Bracelet, carved in high relief with classical portraits with matching earrings, screw backs 19cm bracelet length
\$300 - \$600
- 258**
Victorian Vulcanite High Relief Classical Portrait Pendant, sterling silver backed
\$150 - \$300
- 259**
Victorian 15ct Green Onyx Hard Stone Cameo Brooch, oval panel with high relief classical portrait framed with pave set half pearls
\$400 - \$800
- 260**
Silver Gilt Garnet Framed Portrait Cameo Brooch, all pave bead claw set garnets with groups of three seed pearl and garnet cluster hinged suspension hanger
\$300 - \$600
- 261**
Large Mid C20th 9ct Framed Portrait Cameo Brooch, rub-over mounted 6cm
\$200 - \$400
- 262**
Original Boxed Lalique Masque de Femme brooch, with square frosted and moulded mask inset glass panel on black celluloid C2004
\$400 - \$500
- 263**
18ct Yellow Gold and Jade Bracelet, four circlet panels of bright apple green jade interspace with roundels of Chinese calligraphy with an extra panel approx 21.4gm 16.5cm length
\$1,600 - \$2,000
- 264**
9ct Half Engraved Hinged Snap Bangle
\$400 - \$600
- 265**
9ct Wide Half Engraved Hinged Snap Bangle, metal core 6cm dia
\$400 - \$600
- 266**
Victorian Gold Plated Wide Hinged Snap Bangle, all finely bright cut with remains of black enamelling, some dent faults
\$700 - \$900
- 267**
9ct Wide Gate Link Bracelet, heart padlock clasp (one rail link missing) 20cm length
\$400 - \$600
- 268**
9ct Hollow Curb Link Bracelet, no clasp 18cm length
\$300 - \$500
- 269**
9ct Tri-colour Modern Trace Link Bracelet, red, yellow and white gold 22cm length approx 25gms (shows wear to links)
\$850 - \$1,000
- 270**
18ct Twist Bangle, adjustable size with Port and Starboard ships light terminals 6cm to 7cm dia's
\$350 - \$700
- 271**
9ct Sculptured Bird Brooch, wings outspread with green agate body
\$150 - \$300
- 272**
David Anderson Norway .925 Silver and Enamel Seahorse Brooch
\$350 - \$500
- 273**
18ct Single Lapis Lazuli Pendant, rub-over set octagonal lapis panel with split rail pendant and suspender
\$200 - \$300
- 274**
Victorian 9ct Micro Mosaic Bar Brooch, probably the Temple of Vesta located in the Roman Forum together with citrine paste brooch
\$160 - \$260
- 275**
Victorian 9ct Mounted Amethyst Swivel Fob, on 9ct trace link neck chain 41cm length
\$500 - \$700
- 276**
9ct Fine Trace Link Neck Chain, with attached compass fob and fancy pocket watch key 70cm length
\$500 - \$800
- 277**
Victorian 9ct Locket, rectangular box locket set with single oval cabochon cut black opal on trace link chain 42cm length
\$300 - \$500
- 278**
9ct Single Cabochon Amethyst Pendant, oval deep purple amethyst on split scroll frame with 9ct trace link neck chain 46cm length '10 replacement \$2,700
\$800 - \$1,200
- 279**
18ct Framed Single Large Moonstone Pendant, approx 21mm x13mm on fine plated chain
\$400 - \$600
- 280**
14ct Modern Flat Curb Link Bracelet, 19cm length
\$300 - \$500
- 281**
Single Strand Slightly Graduated Cultured Pearl Necklace, 53 5mm - 8mm pearls on 14ct white gold and single cabochon ruby clasp 36cm length
\$500 - \$800
- 282**
S/S Single Black Pearl Ribbon Bow Brooch, modern design bow with 12mm pearl
\$120 - \$240



291



292



293



294



299



297



296



298



301



300



288

- 283**
Single Strand South Sea Black Semi-Baroque Cultured Pearl Necklace, 41 very slightly graduated 10mm to 8mm pearls interspaced with 9ct beads and on trace link chain lengthener and pair stud earrings, lengthener 8cm overall length 62cm \$500 - \$800
- 284**
18ct Two Cultured Pearl Ring, white and black/blue 7mm pearls on crossed over shoulders in Mikimoto box, Ring size N \$300 - \$600
- 285**
Uniform Single Strand Cultured Pearl Necklace, 51 5mm pearls on 18ct white gold diamond clasp 35cm length together with 18ct white gold single pearl drop earrings, pierced and 18ct white gold two pearls and six crystal dress ring, Ring size G \$300 - \$600
- 286**
Two Pair 14ct Single Cultured Pearl Cuff Links, oval textured open panels each set with single pearl \$200 - \$400
- 287**
Chinese Mutton Fat Jade Bangle, 6cm internal dia \$200 - \$400
- 288**
Victorian Silver Agate Bracelet, six faceted cylindrical rods of carnelian and striated brown agate with circular disc clasp \$200 - \$400
- 289**
Victorian Silver Citrine and Agate Scottish Brooch, 1873 registration mark \$100 - \$200
- 290**
Victorian Scottish Silver and Agate Cairngorm Brooch, central large golden yellow cairngorm on bloodstone and red agate frame \$200 - \$300
- 291**
Single Strand Graduated Quartz Bead Necklace, amethyst, carnelian, jasper, aventurine and others with metal bead spacers and mounts 52cm length \$100 - \$200
- 292**
Edwardian Single Strand Small Branch Form Coral Necklace, re-strung on new 9ct bolt ring clasp, 130cm length \$200 - \$400
- 293**
Victorian Single Strand Graduated Amber Bead Necklace, 91cm length \$150 - \$300
- 294**
Antique North African Copal Amber and Metal Bead Necklace, very large graduated amber beads 45mm to 30mm dia \$600 - \$1,000
- 295**
Antique North African Single Copal Amber and Metal Necklace, large encased amber bead 42mm dia, 58cm chain length \$250 - \$500
- 296**
Antique North African Copal Amber Bead and Metal Necklace, circular amber beads with metal mounts on trace link chain (no clasp) 72cm dia length \$250 - \$500
- 297**
Antique North African Bead Necklace, African brass mask pendant on multi-strand faience bead necklace with two copal beads 58cm necklace length together with three cast brass amulets \$150 - \$300
- 298**
Single Strand Lapis Lazuli Necklace, 15 natural panel cut discs with 9ct fittings 50cm length \$100 - \$200
- 299**
Four Strand Uniform Lapis Lazuli Bead Necklace, interspaced with 18ct gold beads and fittings 45cm length \$400 - \$700
- 300**
Huge Ottoman Antique Silver and Lapis Lazuli Seal Ring, lapis oval panel intaglio carved with a pegasus Ring size Q \$300 - \$500
- 301**
Vintage French Paris Fashion Necklace, double row of green tone plastic beads supporting three beaded clowns 38cm length \$600 - \$1,000
- 302**
14ct White Gold Single Citrine Pendant, rectangular step cut light yellow citrine approx 10.50cts with frame corners and bale set with diamonds '21 replacement \$4,100 \$1,000 - \$1,500
- 303**
14ct 45stone Yellow Sapphire and Diamond Dress Ring, central rub-over rectangular step cut bright yellow sapphire approx 1.10cts with double tier and shoulder diamond surround Ring size N '21 replacement \$6,100 \$1,400 - \$2,000
- 304**
18ct 79stone Topaz and Diamond Cluster Ring, central oval mixed facet cut intense blue topaz approx 7.50cts with surround and shoulders pave set with brilliant cut diamonds Ring size O '21 replacement \$5,000 \$1,200 - \$1,600
- 305**
9ct Large Single Smokey Quartz Dress Ring, raised double claw set oval mixed cut quartz on bold loop gallery Ring size P \$300 - \$500
- 306**
9ct Large Single Smokey Quartz Pendant, modern double claw set on loop gallery with long tapering suspender \$250 - \$400
- 307**
9ct Single Amethyst Dress Ring, plain gallery four corner claw set rectangular emerald mixed cut approx 14.7cts Ring size N 1/2 '21 replacement \$2,460 \$600 - \$800
- 308**
18ct Single Amethyst Pendant, plain four corner claw set octagonal step cut amethyst approx 12.09cts '21 replacement \$4,600 \$500 - \$1,000
- 309**
14ct Single Synthetic Alexandrite Pendant, scroll frame four corner claw set octagonal step cut approx 6.33cts '21 replacement \$1,450 \$300 - \$600
- 310**
8ct Single Amethyst Pendant, rectangular step cut amethyst on double flame frame on 8ct box link neck chain 56cm length \$250 - \$400
- 311**
14ct White Gold Single Amethyst and Diamond Dress Ring, four claw set octagonal step cut amethyst with scallop frame set with six diamonds \$300 - \$500
- 312**
Victorian 9ct Amethyst and Pearl Ring, central oval mixed cut amethyst approx 5.20cts with surround of pave set seed pearls \$350 - \$600
- 313**
14ct Single Coral Dress Ring, pink angel skin coral - also called Pelle D 'Angelo modern setting of cross-over gallery frame set with three round brilliant cut diamonds Ring size P 1/2 \$600 - \$900



303



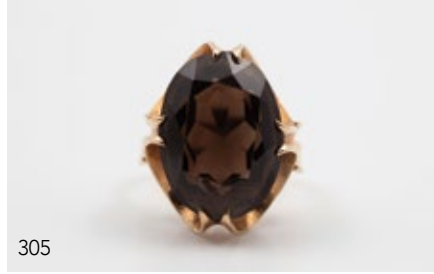
302



313



312



305



315



308



309



310



311



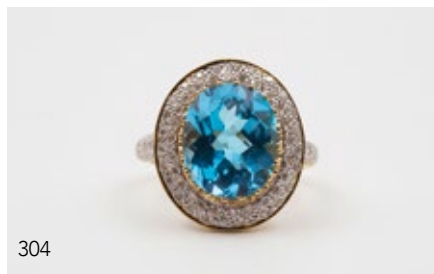
275



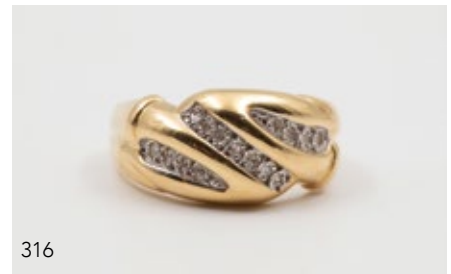
307



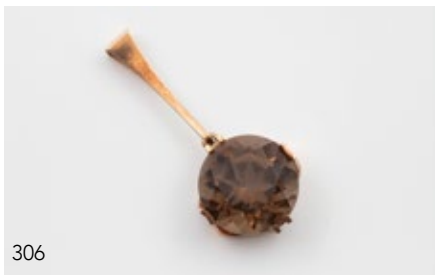
314



304



316



306



321



320

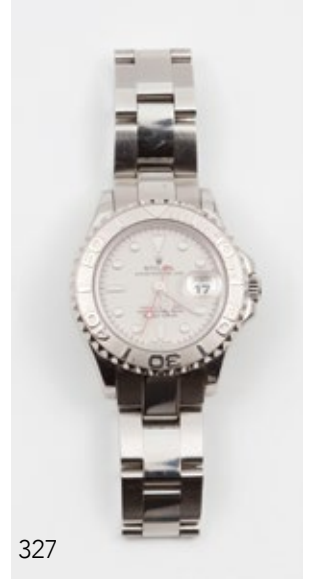
- 314**
9ct Single Synthetic Blue Spinel Dress Ring, crown claw set round mixed cut spinel
 Ring size O 1/2
 '21 replacement \$1,500
 \$400 - \$600
- 315**
18ct Three Stone Sapphire Dress Ring, triple bright cut leaf scroll design set with oval cabochon cut deep blue sapphires
 \$600 - \$1,000
- 316**
18ct 15stone Diamond Fancy Band Ring, slightly domed triple scroll pave set with diamonds
 \$600 - \$800
- 317**
18ct Single Diamond Band Ring, modern design signet style box set off centre brilliant cut diamond on triple split side
 Ring size K 1/2
 \$400 - \$600
- 318**
18ct Ten Stone Ruby and Diamond Double Bridge Ring, claw set round brilliant cut old mine cut diamond and mixed cut rubies
 Ring size I
 \$600 - \$800
- 319**
Pair 9ct Bright Cut Hoop Earrings, pierced
 \$100 - \$200
- 320**
9ct Signet Ring, engraved with Scottish thistle Birmingham 1971
 Ring size I
 \$300 - \$500
- 321**
Pair 14ct Lozenge Cuff Links, approx 20gms
 \$500 - \$800
- 322**
18ct Anchor Stick Pin, together with curb link fob chain 19cm length approx 12gms
 \$400 - \$600
- 323**
14ct Stick Pin, head of mouse holding and seated on pearls
 \$100 - \$200
- 324**
Boxed Mont Blanc 75th Anniversary Ball Point Pen, #164 black
 \$600 - \$800
- 325**
Mont Blanc Meisterstück Automatic Gents Chronograph Wrist Watch, gilt collection with silvered dial four subsidiary dials on leather strap Model #29001, original box with outer box and certificate
 \$5,000 - \$6,000
- 326**
Rolex Yacht-Master 35 Gents Wrist Watch, Oyster Perpetual Date Swiss Made Chronograph - brushed with polished 904L oyster steel stainless steel case and bracelet, with original green box, card outer box and certificates
 \$10,000 - \$14,000
- 327**
Rolex Yacht-Master 35 Ladies Wrist Watch, Oyster Perpetual Date Swiss Made Chronograph - brushed with polished 904L oyster steel stainless steel case and bracelet, with original red box, card outer box and certificates
 \$8,000 - \$10,000
- 328**
C1990 Omega Special Edition Speed Master Moonphase Chronometer Gents Wrist Watch, Classic Speedmaster DA 17534 18ct and stainless steel with bracelet strap with original grey box, outer box and certificate
 \$10,000 - \$14,000
- 329**
C1973 Omega Geneve Automatic Stainless Steel Gents Wrist Watch, on expanding strap with original guarantee booklet
 \$600 - \$1,000
- 330**
All 18ct Longines Flagship Quartz Ladies Wrist Watch, white enamel index dial on bracelet strap model L4.194.6 with original box
 '21 replacement \$20,000
 \$7,000 - \$9,000
- 331**
All 14ct Anker Ladies Dress Wrist Watch, circular dial on integral mesh weave bracelet strap 18.5cm length
 \$1,000 - \$1,400
- 332**
All 18ct Omega De Ville Automatic Ladies Wrist Watch, gilt circular dial with baton indices on tight mesh integral strap
 '10 replacement \$3,400
 \$1,000 - \$1,500
- 333**
Salvatore Ferragamo Gents Swiss Quartz Wrist Watch, circular patterned silver satin finish dial with sapphire crystal on original leather strap
 \$1,000 - \$1,500
- 334**
C2007 Tag Heuer Alter Ego WAA 1412 Ladies Quartz Wrist Watch, pink metallic dial with sapphire crystal on stainless steel integral bracelet with original box and certificates
 \$600 - \$800
- 335**
Tissot Gold Plated Steel Quartz Ladies Cocktail Wrist Watch, rectangular MOP dial on bracelet strap Model number T05.5.185.81 with original boxing
 \$150 - \$300
- 336**
18ct Hunter Cased Key Wind Pocket Watch, white enamel dial with roman numerals 3/4 back plate by E J Thompson, London No12103, all machine engraved case
 \$1,800 - \$2,200
- 337**
Rotherhams 9ct Hunter Cased Lever Wind Pocket Watch, white enamel dial with roman numerals 3/4 back plate made for Stewart Dawsons Co #577844, plain case
 \$1,200 - \$1,500
- 338**
18ct Open Face Lever Wind Pocket Watch, white enamel dial with seconds movement roman numerals William Wagstaff Islington London #6916 case hallmarked Sheffield 1858
 \$1,500 - \$2,000
- 339**
Rotherhams 9ct Hunter Cased Lever Wind Small Pocket Watch, white enamel dial with roman numerals, 3/4 back plate Rotherhams London 90613 with all floral engraved case
 \$800 - \$1,200
- 340**
Original Boxed Cyma 9ct Open Face Lever Wind Pocket Watch, silvered satin finish dial with Arabic numerals 15 jewel Swiss mechanism
 \$1,200 - \$1,500
- 341**
18ct Open Face Key Wind Small Pocket Watch, gilt engraved dial with Rudolph Platnauer mechanism
 \$800 - \$1,000
- 342**
18ct Open Face Key Wind Small Pocket Watch, gilt engraved dial with roman numerals, fusee movement by A J Harrinworth & Co London #71120, cased 1913 Sheffield
 \$900 - \$1,200
- 343**
14ct Open Face Lever Wind Small Pocket Watch, white enamel dial with roman numerals engraved back cover on 9ct bow brooch
 \$700 - \$1,000
- 344**
Waltham U.S.A. 9ct Cased Open Face Lever Wind Pocket Watch, white enamel dial with roman numerals, Dennison case dated 1925 Birmingham
 \$800 - \$1,200



326



326



327



328



328



330



324



325



329



333

- 345**
C1920 Omega Gold Plated Open Face Lever Wind Pocket Watch, plain silvered dial Arabic numerals with a Swiss made 15 jewel mechanism
 \$600 - \$800
- 346**
Waltham 10ct Open Face Lever Wind Pocket Watch, white enamel dial with roman numerals 17 jewel A.W.W.Co. Riverside
 \$800 - \$1,200
- 347**
C1930 Sackville Gold Plated Open Face Lever Wind Pocket Watch, silvered dial guilloche effect and black Arabic numerals with a Swiss made 15 jewel mechanism
 \$150 - \$300
- 348**
Omega Gold Plate Open Face Lever Wind Pocket Watch, white enamel dial with Arabic numerals 15 jewels Swiss mechanism
 \$100 - \$200
- 349**
Early C20th 18ct Ladies Wrist Watch by Rothermans London, white enamel dial with Arabic numerals (some damage) made for Stewart Dawsons Co Ltd on 18ct expanding strap
 \$500 - \$1,000
- 350**
Vintage C1906 Rolex 9ct Ladies Wrist Watch, white enamel circular dial with roman numerals on expanding 9ct strap
 \$300 - \$500
- 351**
Vintage Rolex 9ct Ladies Wrist Watch, silvered and gilt circular dial with Arabic numerals
 \$160 - \$300
- 352**
C1904 Gold Plated Open Face Lever Wind Small Pocket Watch, attached to 9ct fancy chain slide fob, clip not gold
 \$300 - \$500
- 353**
C1972 Longines 9ct Gold on Steel Gents Manual Wind Wrist Watch, silvered satin finished dial
 \$1,200 - \$1,500
- 354**
C1950 Omega Stainless Steel Automatic Seamaster Gents Wrist Watch, (2577 Bumper) silvered satin finish dial with luminous indices
 \$1,200 - \$1,600
- 355**
Vintage Made in France Obrey S/S Dress Watch, circular black dial manual wind on heavy curb link bracelet strap 18.5cm length
 \$600 - \$1,000
- 356**
Victorian Heavy S/S Slightly Graduated Curb Link Albert Chain, with attached swivel fob and cigar holder case 43cm length
 \$300 - \$500
- 357**
S/S Open Face Key Wind Pocket Watch, H Samuel of Manchester Birmingham case 1886 attached to Austrian silver and niello curb link chain with hunting fobs of silver mounted animal claw, antler tip and deer teeth, tankard and small animal jaw with teeth together with tin painted in the Stobwasser of Brunswick manner
 \$400 - \$800
- 358**
European .800 Silver Open Face Lever Wind Pocket Watch, fancy floral painted dial on fancy gold plated chain (faults) together with antique metal Masonic ring and 14ct single garnet gents dress ring
 \$200 - \$400
- 359**
S/S Hunter Cased Key Wind Pocket Watch, seconds dial Rothermans, London case Birmingham 1907 attached to s/s graduated curb link Albert chain with key 38cm length
 \$200 - \$400
- 360**
S/S Pear Cased Key Wind Pocket Watch, fine fusee movement by Richard Lind, London with case dated 1779 maker James Richards, the outer cover embossed with three figure group and florals
 \$600 - \$1,000
- 361**
S/S Pear Cased Open Face Key Wind Pocket Watch, white enamel dial with Arabic numerals fusee movement by G Eley, Dublin, case dated 1809 London
 \$300 - \$500
- 362**
Longines .925 Silver Open Face Lever Wind Chronograph, Baume Swiss Made with white enamel dial two subsidiary dials, stop with sweeping seconds hand
 \$300 - \$500
- 363**
.925 Silver The Ellerslie Open Face Lever Wind Chronograph Pocket Watch, minute repeating split second Swiss made mechanism (slight crazing to dial)
 \$200 - \$400
- 364**
Omega .925 Silver Hunter Cased Lever Wind Pocket Watch, white enamel dial with Arabic numerals, all machine engraved case
 \$150 - \$350
- 365**
Fine Silver Half Hunter Cased Key Wind Pocket Watch, roman numerals on white enamel diamond with black enamelled outer numerals on machine engraved covers
 \$150.00 - \$300.00
- 366**
S/S Open Face Key Wind Pocket Watch, fancy engraved silvered dial with roman numerals full plate fusee movement #7758 case Birmingham 1898
 \$100.00 - \$200.00



336



337



339



340



342



344



345



347



348



360



360



361



357



362

RECENT ANTIQUE HIGHLIGHTS



1



2



3



4



5



6



7



8



9



10

Illustrated: **1** Art Deco Circular Chrome & Butterfly Wing Drinks Tray - \$6,000 **2** Sir Herbert James Gunn (after) Portrait Of The Queen In 1953 Coronation Regalia - \$14,500 **3** Geo 5 S/S Three Piece Tea Set - \$2,000 **4** C19th German Burr Walnut and Gilded Bracket Clock - \$1,450 **5** NZ Silver and Greenstone Kiwi Knife Rests - \$15,700 **6** Four Late C18th/Early C19th European Portrait Studies Of Tradesmen - \$5,500 **7** C19th Biedermeier Pine Chest of Drawers - \$5,000 **8** Ming Style Blue & White Bottle Vase - \$2,000 **9** Late C19th NZ Colonial Specimen Wood Inlaid Box By William Norrie \$41,000 **10** C19th Japanese Carved Hardwood Desk - \$6,000

* Rounded to the nearest hundred and include buyers premium + GST

RECENT ARTEFACT HIGHLIGHTS



1



2



3



4



5



6



7



8



9



10



11



12

Illustrated: **1** C19th Pounamu Hei-Tiki from the collection C F Goldie- \$24,000 **2** Ngati Tarawhai Gourd Shaped Ipu - \$7,200 **3** Wooden Whakawae (door jamb) section - \$13,200 **4** Ngati Tarawhai Carved Mirror Frame - \$31,300 **5** Tene Waitere A large and Important Carved Poupou - \$78,450 **6** Cigar & Tobacco Box Modelled as a Whareniui (Dwelling) - \$5,790 **7** Jane Brenkley Wine Table - \$6,400 **8** Patoromu Tamatea An Historically Important Kumete Whakairo (Carved Lidded Presentation Bowl) - \$156,900 **9** late 19th Century Flax Korowai (Cloak) - \$10,800 **10** Rare Tattersfield Maori Legend Rug - \$11,400 **11** New Zealand Colonial 'Moa' Day Bed - \$19,300 **12** Pre-European Northland Papahou (Treasure Box) - \$65,000

* Rounded to the nearest hundred and include buyers premium + GST

RECENT FINE JEWELLERY HIGHLIGHTS

OVER \$2.2 MILLION GROSSED LAST YEAR &
90% OF LOTS SOLD



1



2



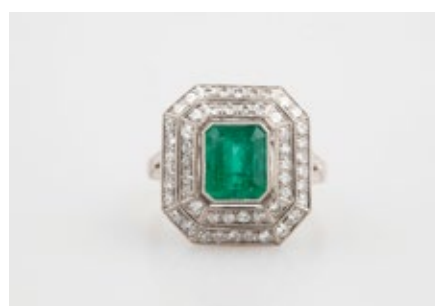
3



4



5



6



7



8



9



10



11



12



13



14



15



16



17



18



19



20

Illustrated: **1** 14ct White Gold Tanzanite & Diamond Necklace - \$27,750 **2** 18ct White Gold 1123stone Diamond Pendant Necklace - \$27,500 **3** Pair 18ct White Gold & Diamond Pendant Earrings - \$3,800 **4** 18ct White Gold & Platinum Eleven Stone Emerald & Diamond Cluster Ring - \$27,700 **5** 18ct 35stone Sapphire and Diamond Cluster Ring - \$27,700 **6** 18ct White Gold 53stone Emerald & Diamond Cluster Ring - \$6,450 **7** Modern Gold and Diamond Fancy Bangle - \$8,450 **8** Five Strand Uniform and Graduated Cultured Pearl Necklace - \$9,600 **9** Art Deco All Platinum 242 Stone Diamond Bracelet - \$48,280 **10** Fancy 14ct 437stone Diamond Necklace - \$10,863 **11** 18ct Tiki Pendant on Chain - \$5,700 **12** James King (NZ) Late C19th Silver Gilt Brooch - \$55,522 **13** Elsie Reeve (NZ 1885-1927) S/S Moonstone and Enamel Pendant - \$19,312 **14** Edith Morris (NZ 1895-1965) S/S and Single Green Tourmaline Brooch - \$10,259 **15** NZ Kiwi Beak Brooch - \$16,900 **16** Early C19th Rolled Gold Emerald Locket - \$7,845 **17** Art Deco Platinum & Diamond Dress Clip - \$19,300 **18** Andrew Grima Design 18ct Tourmaline & Diamond Brooch - \$5,900 **19** Victorian Grand Tour 18ct Mosaic Bracelet - \$7,840 **20** 18ct Mounted Five Sovereign Bracelet - \$7,700 * Rounded to the nearest hundred and include buyers premium + GST

RECENT ART HIGHLIGHTS

OVER \$5 MILLION GROSSED LAST YEAR &
95% OF LOTS SOLD



1



3



4



2



5



6



7



8



9



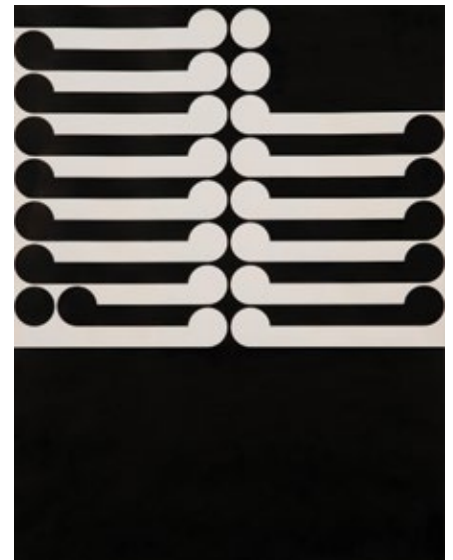
10



11



12



13

- Illustrated: **1** Charles Frederick Goldie *Sad Memories Ngaheke (An Arawa Chieftainess)*, oil on canvas - \$446,600 **2** Colin McCahon, *Singing woman on pink ground*, oil on board - \$400,000 **3** Michael Parekowhai Jeff Cooper (*The Beverly Hills Gun Club*), taxidermy sparrow & powder-coated aluminium - \$27,800 **4** Heather Straka *Fate*, oil on canvas board - \$33,800 **5** Fiona Pardington *Portrait of a Female Kiwi / Apteryx Haasti c-type print* - \$55,000 **6** Melvin (Pat) Day *Breaker Bay, Wellington Harbour*, oil on canvas - \$52,600 **7** Colin McCahon *Truth from the King Country Load Bearing Structures*, oil on canvas - \$96,500 **8** Trevor Moffitt *Their Running No. 2*, oil on board - \$23,900 **9** Don Peebles *Relief Construction*, enamel on wooden construction - \$23,900 **10** Robert Ellis *Motorway/City No 18*, oil on board - \$51,900 **11** Buck Nin *Dancing on the Flats*, acrylic on board - \$24,100 **12** Manos Nathan *Ipu Manaia Parirau* - \$10,250 **13** Gordon Walters *Koru*, ink on paper - \$113,500 * Rounded to the nearest hundred including buyers premium + GST

Dunbar Sloane has recently been commissioned to value the entire Art collection of the Museum of New Zealand Te Papa Tongarewa and the entire collection of the National Library.

The valuers cover all areas and have completed valuation mandates for the following:

- Te Papa Tongarewa
- National Library
- Sarjeant Gallery
- The Canterbury Museum
- The Auckland War Memorial Museum
- The Rotorua Museum:
Te Whare Taonga o te Arawa
- The Waikato Museum:
The Whare Taonga o Waikato
- Napier Museum and Library
- Heritage New Zealand
Pouhere Taonga
- Kingitangi Taonga:
Collections of the Maori King
- Whakatane Museum
- Archives New Zealand
- Parliamentary Services
- Te Puni Kokiri:
Ministry of Maori Development
- Auckland City Council
- Wellington City Council
- Government House Wellington
- Government House Auckland
- Nelson Provincial Museum

New Zealand's Number One Valuers

From the Treaty of Waitangi to the nation's treasures held at Te Papa, our five senior valuers are some of the most trusted and experienced chattel valuers in the country. We have valued approximately \$2 billion worth of chattels in the last 12 months.

James Parkinson

022 028 8541

james@dunbarsloane.co.nz

Anthony Gallagher

0274 713 667

antiques@dunbarsloane.co.nz



SELECT ENTRIES INVITED

Maori, Oceanic, Asian & African Art

6 & 7 December 2021

Modern Design

8 December 2021

Enquiries

Dunbar M Sloane

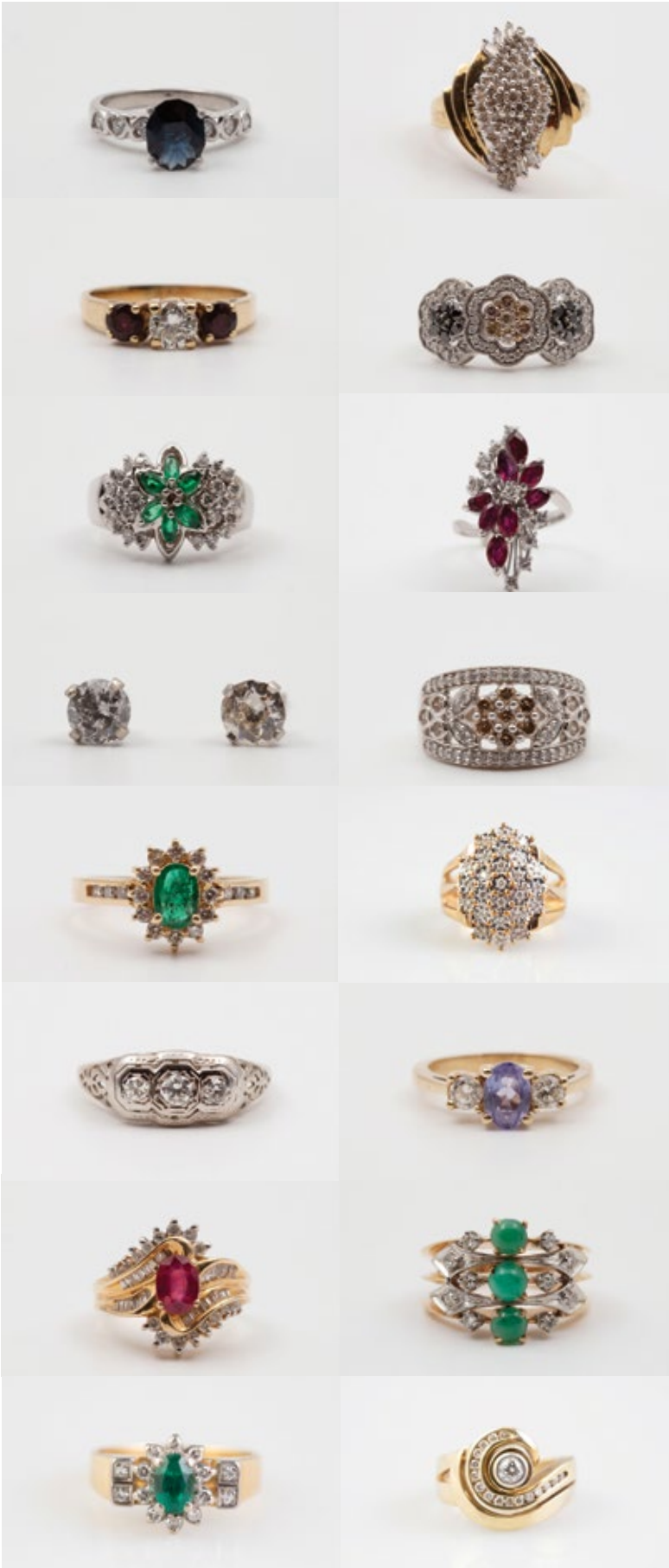
021 473 998

auckland@dunbarsloane.co.nz

James Parkinson

022 028 8541

james@dunbarsloane.co.nz



CATALOGUE IN PRODUCTION

Vintage & Affordable Jewellery

1 December 2021

Enquiries

Bettina Frith
+64 4 472 1367
jewellery@dunbarsloane.co.nz

ENTRIES CURRENTLY INVITED

Fine & Estate Jewellery

March 2022

Enquiries

Bettina Frith

+64 4 472 1367

jewellery@dunbarsloane.co.nz



ENTRIES CURRENTLY INVITED

Antique & Decorative Arts

March 2022

Enquiries

Anthony Gallagher

0274 713 667

antiques@dunbarsloane.co.nz



CATALOGUE IN PRODUCTION

Studio Ceramics, Art Glass, Sculpture & Applied Arts

25 November 2021

ENTRIES CURRENTLY INVITED

April 2022

Enquiries

Helena Walker

+64 4 472 1367 / 0274 713 662

art@dunbarsloane.co.nz

CATALOGUE IN PRODUCTION

Toy & Dolls

December 2021



Enquiries

Bettina Frith

+64 4 472 1367

jewellery@dunbarsloane.co.nz

ENTRIES CURRENTLY INVITED

Fine Wine & Spirits

February 2022



Enquiries
+64 4 472 1367
info@dunbarsloane.co.nz

BUYERS GUIDE

If you have not bought from Dunbar Sloane before, please read the following notes. Staff will be pleased to answer any questions you may have.

BEFORE AUCTION

The terms and conditions under which the buyer acts at a sale are detailed at the back of this catalogue. We recommend that you read and understand these conditions of business before registering to bid at an auction. This sale is subject to the conditions of business printed in this catalogue and to the reserves.

Viewing

All lots are available for inspection prior to the sale. Although staff will endeavour to answer your enquiries, and give advice, the final decision to bid, is at your discretion and liability.

Pre-Sale Estimates

The estimated prices printed below the catalogue descriptions are in New Zealand dollars and are the approximate prices expected to be realised, excluding buyers premium. They are not definitive, they are prepared well in advance of the sale and they are subject to revision.

Condition Reports

Dunbar Sloane Ltd will provide a verbal condition report if you would like an opinion on any particular lot prior to purchasing. These must be requested at least 24 hours before the commencement of auction. All goods are sold "as is" and it is up to the buyer to satisfy themselves as to the condition of an item before the auction.

THE AUCTION

Buying at Auction

You are able to bid using the following four methods:

1. Bidding in the Room

To bid at the auction you will need to register for a bidding number at the front desk either during the viewing or prior to the auction. Please bid clearly and promptly using your bidding number.

2. Absentee Bidding

If you are unable to attend the auction, Dunbar Sloane Ltd can bid on your behalf according to your written instructions. This is a free service for intended buyers. Please complete clearly the form at the back of this catalogue and submit it to Dunbar Sloane Ltd at least 24 hours before the sale to ensure it is safely received. Lots will be purchased for you as reasonably as possible, subject to other bids in the room and to reserves.

3. Telephone Bidding

If you are unable to attend the auction, you can elect to bid by telephone (subject to availability). Telephone bidding must be arranged with Dunbar Sloane Ltd prior to the sale and is subject to a minimum lot estimate of \$500 or greater. Please note that the auctioneer determines the increments in bidding, not the telephone bidder. We accept no responsibility if for whatever reason we are unable to contact you and as such recommend leaving a covering bid.

4. Live Online Bidding

We offer live online bidding on our website: www.dunbarsloane.co.nz

Registering online does not automatically register to bid, and further identification maybe required, especially if you are an International client.

Selling Rate

Fine Art auctions are generally conducted at the rate of about 60 lots per hour. However, this can vary.

AFTER THE AUCTION

Payment

Payment for purchase is due in New Zealand dollars within 48 hours from the date of sale by cash, cheque, eftpos or electronic transfer. Due to the Anti Money Laundering Act we no longer accept cash or cheques for purchases of \$10,000 or over. Bank details as follows:

Dunbar Sloane Ltd

06 0501 0524945 00

Swift Code ANZBNZ22

Please include details of sale date and lot numbers with all payments.

International clients will need to add an additional \$25NZD to cover bank transfer fees

Collection of Purchases

Property purchased can be collected as soon as full payment has been received. Any items not collected within seven days of the auction may be subject to a storage and fee. Insurance (subject to terms and conditions) applies for up to two working days from the date of the sale whilst items are in our care.

Items must be paid for straight away and a second account for courier/freight charges will follow as soon as possible when we have confirmed courier charges.

Packaging and Transportation

We advise buyers to arrange transport and insurance with their preferred provider/s. We accept no responsibility for loss or damage in transit. For smaller items able to be couriered, Dunbar Sloane Ltd can pack and courier for a fee. This is to be paid before the goods leave our premises. We pack with care, however we take no responsibility for damage once your goods leave our premises. It is up to the buyer to arrange insurance to cover any damage or loss in transit.

BUYERS PREMIUM

The buyer shall pay to Dunbar Sloane Ltd a premium of 18% of the hammer price plus GST on the premium only—effectively adding 20.70% to the hammer price.

CONDITIONS OF SALE

1.

The highest Bidder is deemed to be the Buyer, and if during the Auction the Auctioneer considers that a dispute has arisen, the Lot in dispute shall be immediately put up again for sale.

2.

The Auctioneer has the right to refuse any bid and to advance the bidding at his absolute discretion.

3.

The Seller shall be entitled to place a reserve on any Lot and the Auctioneer shall have the right to bid on behalf of the Seller for any Lot on which a reserve has been placed.

Dunbar Sloane Ltd have the right to withdraw or divide any Lot or to combine any two or more Lots at their sole discretion.

4.

The Buyer shall forthwith upon the purchase give in his/her name and permanent address.

The Buyer may be required to pay down forthwith the whole or any part of the Purchase Money, and if he/she fails to do so, the Lot may at the Auctioneer's absolute discretion be put up again and resold.

The Buyer shall pay to Dunbar Sloane Ltd a premium of 18% on the hammer price together with GST at the standard rate on the premium, and agrees that Dunbar Sloane, when acting as agent for the Seller, may also receive commission from the Seller.

5.

Each Lot sold by the Seller thereof with all faults and defects therein and with all errors of description and is to be taken and paid for whether genuine and authentic or not and no compensation shall be paid for the same.

Dunbar Sloane Ltd act as agents only and neither they nor the Seller are responsible for any faults or defects in any Lot or the correctness of any statement as to the authorship, origin, date, age, attribution, genuineness, provenance or condition of any Lot.

All statements in the Catalogues, Advertisements or Brochures of forthcoming sales as to any of the matters specified in (b) above are statements of opinion, and are not to be relied upon as statements of representations of fact, and intending purchasers must satisfy themselves by inspection or otherwise as to all of the matters specified in (b) above, as to the physical description of any Lot, and as to whether or not any Lot has been repaired.

The Seller and Dunbar Sloane Ltd do not make or give, nor has any person in the employment of Dunbar Sloane Ltd any authority to make or give, any representation or warranty.

In any event neither the Seller nor Dunbar Sloane Ltd are responsible for any representation or warranty, or for any statement in the Catalogues, Advertisements or Brochures of forthcoming sales.

6.

Notwithstanding any other terms of these conditions, if within 7 days after the sale Dunbar Sloane Ltd have received from the Buyer of any Lot notice in writing that in his view the Lot is deliberate forgery and within 9 days after such notification, the Buyer returns the same to Dunbar Sloane Ltd in the same condition as at the time of sale and

satisfies Dunbar Sloane Ltd had considered in the light of the entry in the Catalogue the Lot is a deliberate forgery then the sale of the Lot will be rescinded and the purchase price of the same refunded.

7.

To prevent inaccuracy in delivery, and inconvenience in settlement of Purchase, no Lot can be taken away during the times of sale, nor can any Lot be taken away unless it has been paid for in full.

All lots are to be paid for and taken away at the Buyer's expense within two working days from the sale. Purchases, whilst in our care, will be insured for this period (subject to terms and conditions).

8.

On failure of a Buyer to take away and pay for any Lot in accordance with Condition 7, Dunbar Sloane Ltd reserves any other right or remedies.

To resell the Lot or cause it to be resold by public sale, any money paid in part payment being forfeited, any deficiency attending such resale after deducting all costs incurred in connection with the Lot to be made good by the defaulting Buyer, and any surplus to be the Seller's or: To store the Lot or cause it to be stored whether at their own premises or elsewhere at the sole expense of the Buyer, and to release the Lot only after payment in full of the purchase price together with interest there on of 5% above Bank minimum lending rate, the accrued cost of removal, storage and insurance (if any) and all other costs incurred in connection with the Lot.

If the Lot has been in store pursuant to (ii) for more than 6 months, to remove the Lot from store and to exercise the right set out in (i).

#Molteni Group



D.153.1 CHAIR - GIO PONTI 1953

DAWSON & CO.
www.dawsonandco.nz

Molteni & C

